

# Green Mountains, Vermont

**Fairchild Aerial Surveys, Inc., Postcard Folder – 1940's**

This article, which begins on the next page,  
is presented on the Stone Quarries and Beyond web site.

<http://quarriesandbeyond.org/>

Peggy B. Perazzo  
Email: [pbperazzo@comcast.net](mailto:pbperazzo@comcast.net)  
September 2012

GREETINGS  
*from*

VERMONT



GREETINGS  
from

VERMONT

Copyright 1944 by East River & Co., Inc., New York, N.Y.

Illustrated by  
Green & Co., Vermont  
Dorchester, Vermont

HOMER KODAY  
205

THE REA  
HUDSON

9-2

PLACE  
STAMP  
HERE

SCHEIDT  
MRS.  
DOWNS.

VERMONT

GREEN  
MOUNTAINS

GREETINGS  
from

VERMONT



# The Green Mountain State

## HISTORICAL PLACES OF INTEREST

**BRATTLEBORO** Location of Fort Dummer, 1724, first permanent settlement in Vermont; former home of Rudyard Kipling.

**MONTPELIER** State Capital. State House contains many interesting relics. Birthplace of Admiral Dewey.

**BRADFORD** Birthplace of Admiral Chas. E. Clark.

**DANVILLE** Birthplace of Thaddeus Stevens.

**BENNINGTON** Battle Monument commemorating General Stark's victory over British and Hessian troops, August 16, 1777; headquarters of Ethan Allen and Green Mountain Boys.

**BRANDON** Birthplace of Stephen A. Douglass.

**POULTNEY** Building at East Poultney where Horace Greeley learned the printer's trade.

**HUBBARDTON** Scene of battle, July 7, 1777, between rear guard of General St. Clair's American army and British and Hessian troops.

**VERGENNES** Here, in 1814, was built Commodore Macdonough's fleet which defeated the British in the naval battle of Plattsburgh.

**BURLINGTON** Important military post during War of 1812; tall shaft surmounted by statue over grave of Ethan Allen.

**ST. ALBANS** Scene of St. Albans Raid during Civil War, when Confederate troops from Canada raided banks.

**ISLE LA MOTTE** Fort St. Anne erected by French in 1666, the first settlement by white men within the present limits of Vermont.

**FAIRFIELD** Birthplace of President C. A. Arthur.

## ELEVATIONS OF MOUNTAINS IN VERMONT

Mount Mansfield,	4364 feet above sea level
Killington Peak,	4241 feet above sea level
Camel's Hump,	4088 feet above sea level
Pico Peak,	3967 feet above sea level
Mount Equinox,	3816 feet above sea level
Shrewsbury Peak,	3737 feet above sea level
Mount Ascutney,	3320 feet above sea level

BIRD'S EYE VIEW, BATTLE MONUMENT, BENNINGTON, VT.



FAIRCHILD AERIAL SURVEYS, INC.

Bird's Eye View, Battle Monument, Bennington, VT.



*Looking towards Wilmington from Fire Tower on Mount Olga, Molly Stark Trail, Brattleboro*



Looking towards Wilmington from Fire Tower on Mount Olga, Molly Stark Trail, Brattleboro

MOLLY STARK TRAIL LOOKING TOWARD BENNINGTON, VT.



Molly Stark Trail Looking Toward Bennington, VT.



MT. EQUINOX, MANCHESTER, VT. GREEN MTS.



Mt. Equinox, Manchester, VT. Green Mts.



*View from "The Brow" of Green Mts. and Pownal Valley, Pownal, Vt.*



View from "The Brow" of Green Mts. and Pownal Valley, Pownal, Vt.

EMERALD LAKE IN THE GREEN MOUNTAINS, VERMONT



Emerald Lake in the Green Mountains, Vermont



*Airplane View of Lake Bomoseen in the Green Mts., Vermont*



FAIRCHILD AERIAL SURVEYS, INC.

Airplane View of Lake Bomoseen in the Green Mts., Vermont

CHITTENDEN DAM IN THE GREEN MOUNTAINS, VERMONT



Chittenden Dam in the Green Mountains, Vermont



BIRD'S-EYE VIEW, LAKE DUNMORE, GREEN MTS.,



FAIRCHILD AERIAL SURVEYS, INC.

Bird's-Eye View, Lake Dunmore, Green Mts.

HORTONIA, ECHO AND BEBEE LAKES IN THE GREEN MTS. OF VERMONT



Hortonia, Echo and Bebee Lakes in the Green Mts. of Vermont



CAMEL'S HUMP, GREEN MOUNTAINS, VERMONT



Camel's Hump, Green Mountains, Vermont

MT. MANSFIELD AND LAMOILLE RIVER, GREEN MTS. OF VERMONT



Mt. Mansfield and Lamoille River, Green Mts. of Vermont



MT. MANSFIELD, VT. ALTITUDE 4364 FEET. HIGHEST PEAK IN THE GREEN MOUNTAINS.



Mt. Mansfield, VT. Altitude 4364 Feet. Highest peak in the Green Mountains.

WHERE THE ROAD WINDS BETWEEN GIANT BOULDERS IN SMUGGLERS NOTCH, GREEN MTS., VT.



Where the road winds between giant boulders in Smugglers Notch, Green Mts., VT.



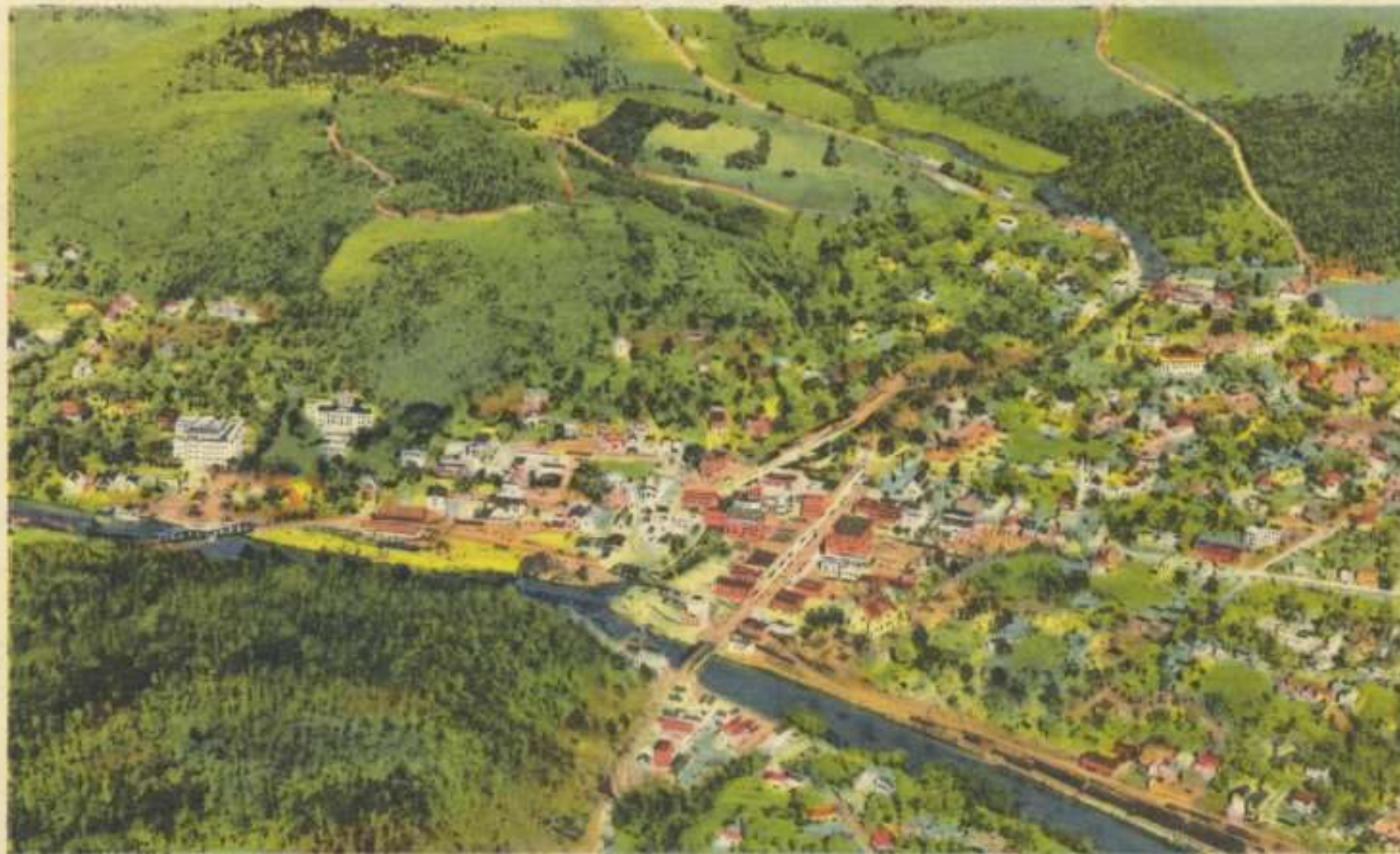
*Covered Bridge, West Brattleboro, Vt., in the Green Mountains*



Covered Bridge, West Brattleboro, Ct., in the Green Mountains



BIRD'S-EYE VIEW OF MONTPELIER, VT. SHOWING STATE CAPITOL



FAIRCHILD AERIAL SURVEYS, INC., N. Y. C.

Bird's-Eye View of Montpelier, VT. Showing State Capitol.



*Looking toward Northfield, from Allis State Park, Green Mts., Vt.*



Looking toward Northfield, from Allis State Park, Green Mts., Vt.



MOUNT ASCUTNEY AND CONNECTICUT RIVER

Mount Ascutney and Connecticut River



*Below is a transcription of the introduction to this postcard folder with views of Vermont, "The Green Mountain State":*

### **The Green Mountain State – Historical Places of Interest**

**Brattleboro:** Location of Fort Dummer, 1724, first permanent settlement in Vermont: former home of Rudyard Kipling.

**Montpelier:** State Capitol. State House contains many interesting relics. Birthplace of Admiral Dewey.

**Bradford:** Birthplace of Admiral Chas. E. Clark.

**Danville:** Birthplace of Thaddeus Stevens.

**Bennington:** Battle Monument commemorating General Stark's victory over British and Hessian troops. August 16, 1777; headquarters of Ethan Allen and Green Mountain Boys.

**Brandon:** Birthplace of Stephen A. Douglass.

**Poultney:** Building at East Poultney where Horace Greeley learned the printer's trade.

**Hubbardton:** Scene of battle, July 7, 1777, between rear guard of General St. Clair's American army and British and Hessian troops.

**Vergennes:** Here, in 1814, was built Commodore Macdonough's fleet which defeated the British in the naval battle of Plattsburgh.

**Burlington:** Important military post during War of 1812; tall shaft surmounted by statue over grave of Ethan Allen.

**St. Albans:** Scene of St. Albans Raid during Civil War, when Confederate troops from Canada raided banks.

**Isle La Motte:** Fort St. Anne erected by French in 1666, the first settlement by white men within the present limits of Vermont.

Fairfield: Birthplace of President C. A. Arthur.

### **Elevations of Mountains in Vermont**

Mount Mansfield, 4364 feet above sea level

Killington Peak, 4241 feet above sea level

Camel's Hump, 4088 feet above sea level

Pico Peak, 3967 feet above sea level

Mount Equinox, 3816 feet above sea level

Shrewsbury Peak, 3737 feet above sea level

Mount Ascutney, 3320 feet above sea level

C. W. Hughes & co., Inc., Mechanicville, N.Y. 6-6748

Genuine Curteich-Chicago "C. T. Art-Coloring" Creation (Reg. U. S. Pat. Off.)