

“Some Examples of Recent Mausoleum Work”

The Monumental News

Vol. XXXIII, No. 1, January 1921, pp. 44-46

This article begins:

“Massiveness of construction and simplicity of architecture are more and more recognized as the standards by which mausoleum work must be measured, and there is naturally not the variety and originality in the interior appearance of recent mausoleums, that may be seen in monuments.

“The Greek temple has come to be the accepted motif of modern mausoleum architecture and the excellence of our types of mausoleum work is measured largely by the degree to which the proportions of the particular classic prototype are approached....”

This article, which begins on the next page,
is presented on the Stone Quarries and Beyond web site.

<http://quarriesandbeyond.org/>

Peggy B. Perazzo
Email: pbperazzo@comcast.net
January 2016

Some Examples of Recent Mausoleum Work

Massiveness of construction and simplicity of architecture are more and more recognized as the standards by which mausoleum work must be measured, and there is naturally not the variety and originality in the exterior appearance of recent mausoleums, that may be seen in monuments.

The Greek temple has come to be the accepted motif of modern mausoleum architecture and the excellence of our types of mausoleum work is measured largely by the degree to which the proportions of the

particular classic prototype are approached.

The problem of constructing the walls and roof with as few stones as possible has resulted in short, square effects in the smaller mausoleums, that make for a sameness of exterior architecture in these structures.

Few specimens of recent mausoleum work retain the spirit and structure of the Greek temple with better success than the "Cone" mausoleum, designed and erected by Mc Donnell & Sons., of Buffalo, in Greensboro, N. C. It is of Mt. Airy granite.

"Earth proudly wears the Parthenon—", so wrote a bard in times gone by and the visitor to Kensico Cemetery from many points within the grounds looks up to see the Corinthian mausoleum of the Manville family crowning a lofty hill within this beautiful burial park. But recently completed, this beautifully studied structure has yet to be given the landscape setting it so richly deserves. The successful use of the Corinthian order in the Manville mausoleum would seem to demonstrate that this, the most ornamental of the Greek orders, demands important scale to be completely effective. A diminutive Corinthian Column, however, carefully proportioned, fails in impressiveness in direct ratio with the lowering of the capital toward the eye level. The vertical accent of the Manville columns and pilasters contribute in a large measure to the stately and commanding proportions of the structure. The admirably studied portal is unfortunately obscure in the photograph, but like the visible details and the impressive interior, it represents the fruit of painstaking study and research in design. The long interval between the door-top and the soffit of the architrave is likewise another element which tends to give great scale to a building which is not unusually large. The Manville mausoleum was executed in Barre granite by the Presbrey-Leland Shops and was erected by them in Kensico Cemetery, New York. The general dimensions are 20-6x23-4x18-9 high. The interior is done in pink Tennessee marble furnished by the Knoxville Marble Co. The bronze work was from the foundry of Paul E. Cabaret & Co., of New York.

One of the finest mausoleums erected in Chicago in recent years is the "Lehmann" just completed for the family that founded "The Fair" department store in that city



CONE MAUSOLEUM, GREENSBORO, N. C.
McDonnell & Sons, Buffalo, N. Y., Contrs.

(photo caption) "Cone Mausoleum, Greensboro, North Carolina, McDonnell & Sons, Buffalo, New York, Contractors." (of Mt. Airy granite)



PRESBREY-LELAND CO., CONTRS.

(photo caption) “Presbrey-Leland Company, Contractors.”

The Manville Mausoleum is located in the Kensico Cemetery, New York. The exterior was executed in Barre Granite, and the “...interior in pink Tennessee marble furnished by the Knoxville Marble Co. The bronze work was from the foundry of Paul E. Cabaret & Co., of New York.”



CHAS. G. BLAKE & CO., CONTRS.

(photo caption) "Charles G. Blake & Company, Contractors."

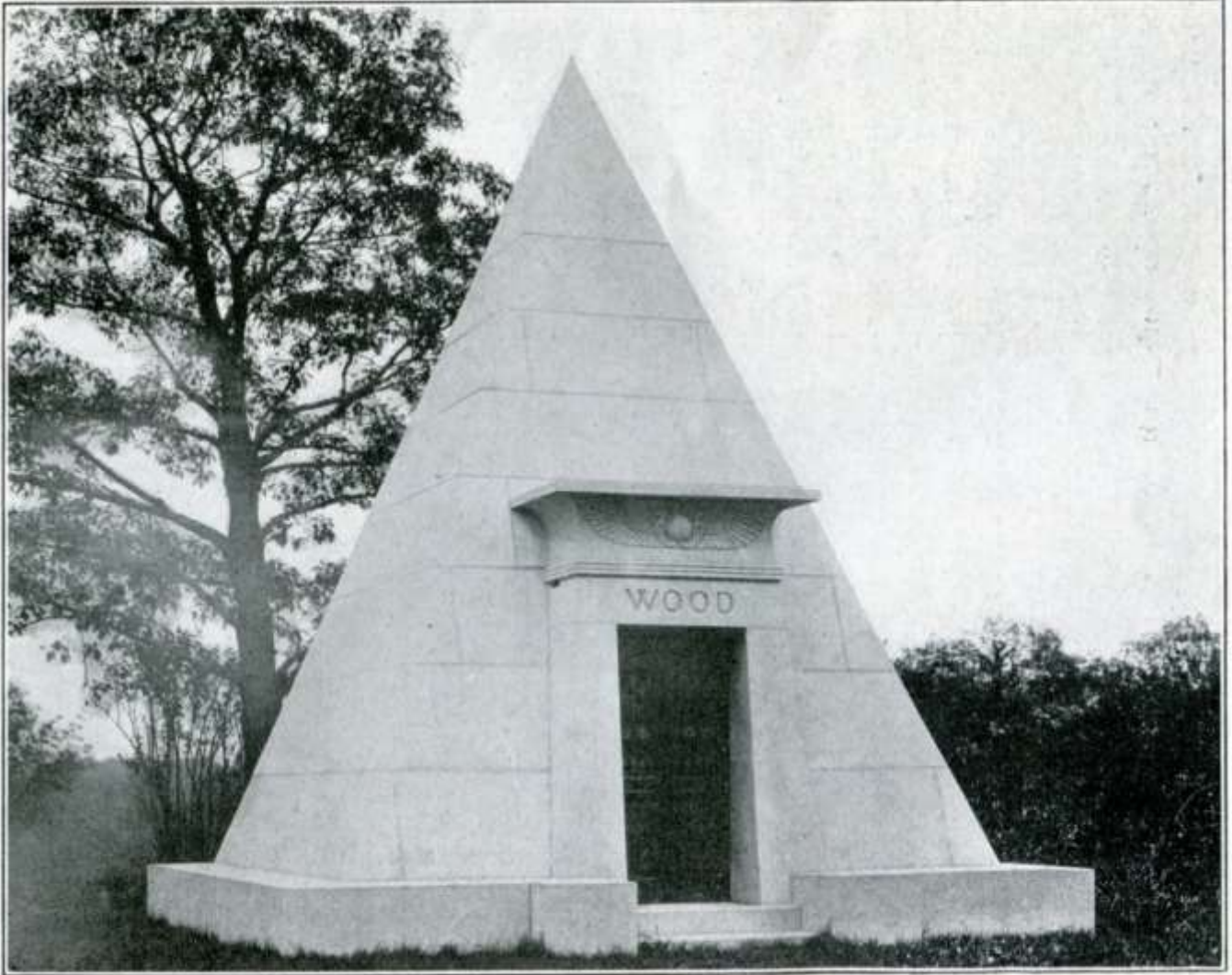
"One of the finest mausoleums erected in Chicago (in the Graceland Cemetery in Illinois) in recent years is the 'Lehmann' just completed for the family that founded 'The Fair' department store in that city by Charles G. Blake & Co...The exterior is in Mt. Airy granite, and the interior in Tavernelle marble...The work was cut in the Blake Shops and the setting was done by Henry Heckelmann Inc., of Chicago."



GALL & CO., CONTRS.

(photo caption) "Gall & Company, Contractors." (J. K. Stewart)

"The J. K. Stewart mausoleum recently completed in Graceland Cemetery, Chicago, is another fine type of Egyptian structure of unusually massive construction, each of the side walls being in one stone...The exterior is of Milford pink granite, and the interior of English vein Italian marble...The granite work was executed by the Milford Pink Victoria White Granite Co, of Milford, Massachusetts. Gall & Co. of Chicago, were the contractors for the work."



P. N. PETERSON GRANITE CO., CONTRS.

(photo caption) "P. N. Peterson Granite Company, Contractors." (Wood)

"...The 'Wood' mausoleum...was erected by the P. N. Peterson Granite Co., in Lakewood Cemetery, Minneapolis, and carries out the Egyptian pyramid form...was cut in Barre granite by Jones Brothers Co., of Boston and Barre."

by Charles G. Blake & Co. The Greek Doric portico that serves as the portal to this structure is flanked on either side by wings giving an effect of breadth and character not often attained in private mausoleums. This work is 40-0x30-0 in ground dimensions and 21-0 high and massive and monumental in construction throughout. The exterior is in Mt. Airy granite, and the interior in Tavernelle marble. The structure occupies a magnificent site on a triangular plot surrounded by three main drives in the choicest section of Graceland Cemetery. The work was cut in the Blake Shops and the setting was done by Henry

Heckelmann, Inc., of Chicago.

The Egyptian pyramid form has been adapted to mausoleum construction in a number of instances to make mortuary structures of very striking architectural character. The "Wood" mausoleum, illustrated, was erected by the P. N. Peterson Granite Co., in Lakewood Cemetery, Minneapolis, and carries out the Egyptian pyramid form in simple, severe lines. The conventional winged globe has been well adapted to the decorative use over the door. The structure is 20-0x20-0x24-0 in general dimensions, and was cut in Barre granite

by Jones Brothers Co., of Boston and Barre.

The J. K. Stewart mausoleum recently

completed in Graceland Cemetery, Chicago, is another fine type of Egyptian structure of unusually massive construction, each of the side walls being in one stone. The exterior dimensions are 20-10x17-8x15-6 high. The exterior is of Milford pink granite, and the interior of English vein Italian marble. It contains six crypts. The granite work was executed by the Milford Pink Victoria White Granite Co., of Milford, Mass. Gall & Co., of Chicago, were the contractors for the work.