

*[Note: This PDF document of the above publication is presented on the Stone Quarries and Beyond web site. There is no date of publication printed in this book. Peggy B. Perazzo]  
<http://quarriesandbeyond.org/>*

# Marble

COLOR PLATES

IMPORTED AND DOMESTIC

BRANCH OFFICES

BOSTON • CHICAGO • CLEVELAND • DALLAS • HOUSTON  
LOS ANGELES • NEW YORK • PHILADELPHIA • SAN FRANCISCO

ONTARIO MARBLE COMPANY, TORONTO

---

VERMONT MARBLE COMPANY • PROCTOR, VERMONT

---

# **MARBLE**

for

## **COLOR • CHARACTER • PERMANENCE • LOW MAINTENANCE**

**T**O the ideal of Beauty in Architecture and to its practical application in the building industry this book of illustrations of marble is dedicated.

The Vermont Marble Company is producer, importer, finisher and contractor in marble. Its activities, therefore, offer a complete service to the Architect and Contractor. As a contribution to this service the latest technique of the graphic arts has been employed to reproduce the color and marking of a number of the more important varieties of both American and Foreign marble so far as the medium of paper and ink can do so.

Many more varieties of marble will be available from time to time through importation and our own production from many localities. Our large quarries and plants in Vermont supplemented by our sales and contracting offices in the larger cities and our subsidiary finishing plants in Remington, Ind., Dallas and Houston, Tex., San Francisco, Cal., and Peterboro, Ont., enable us to serve the industry effectively.

**VERMONT MARBLE COMPANY**



## MARBLE CLASSIFICATION

In the following pages each color plate is identified on the back of the illustration. The identification in each case includes the "M. I. A. Classification."

**TRADE PRACTICE** in the Marble Industry has recognized all Marbles commonly used for interior building purposes, as falling within one of four **GROUPS OR CLASSIFICATIONS**, according to their respective characteristics and working qualities. Therefore, for purposes of standardization and clearer definition, the Marble Institute of America has adopted these four classifications, defined as follows:

- GROUP A** • Sound Marbles which require no 'sticking', 'waxing' or 'filling'; characteristically uniform and favorable working qualities.
- GROUP B** • Marbles similar in character to the preceding group, but somewhat less favorable working qualities; occasional natural faults; limited amount of waxing and sticking necessary.
- GROUP C** • Marbles of uncertain variation in working qualities; geological flaws, voids, veins and lines of separation common; standard shop practice to repair Nature's shortcomings by sticking, waxing and filling; 'liners' and other forms of reinforcement freely employed when necessary.
- GROUP D** • Marbles similar to the preceding group and subject to the same methods of finishing and manufacture, but embracing those materials which contain a larger proportion of natural faults, and a maximum variation in working qualities, etc.; this group comprises many of the highly colored Marbles prized for their decorative qualities.

It should be carefully noted that the four **GROUPS** above defined have no reference whatsoever to comparative merit or value. With proper methods of manufacture all materials, regardless of classification, are regarded as of substantially equal performance, durability or utility with respect to the particular purpose for which employed. The classifications merely define what shall be proper and acceptable in each instance, based on trade usage.

### Alphabetical Index of Colorplates

	Plate No.		Plate No.
Aurisina	51	Neshobe Gray Clouded	104
		Neshobe Gray Veined	105
		Numidian Red	127
Black & Gold	176		
Blue Belge	177		
Bois Jourdan	101	Olivo	151
Botticino	52	Oriental	128
Breche Oriental	53		
Brocadillo	1		
		Radio Black	179
		Red Antique of Italy	129
Cremo	26	Rojo Alicante	130
		Roman Travertine	58
English Vein Vermont	2	Rose de Brignoles	59
		Rosso Verona Alberato	131
Florence	102	Siena Yellow	76
French Grand Antique	178	Standard White Danby	7
French Rouge Antique	126	Striped Brocadillo	8
Hauteville	55		
Highland Danby	103	Tavernelle Clair	60
Light Cloud	3	Vermont Pavonazzo	9
Light Vein	4	Vermont Verde Antique	152
Listavena	5	Vert Issorie	153
Loreda Chiaro	56		
		Westland Cippolino	154
Metawee Danby	6	Westland Cream Dark	27
		Westland Green Vein	
Napoleon Gray	57	Cream	28

### Index by Color Groups, as to Predominating Color Effect

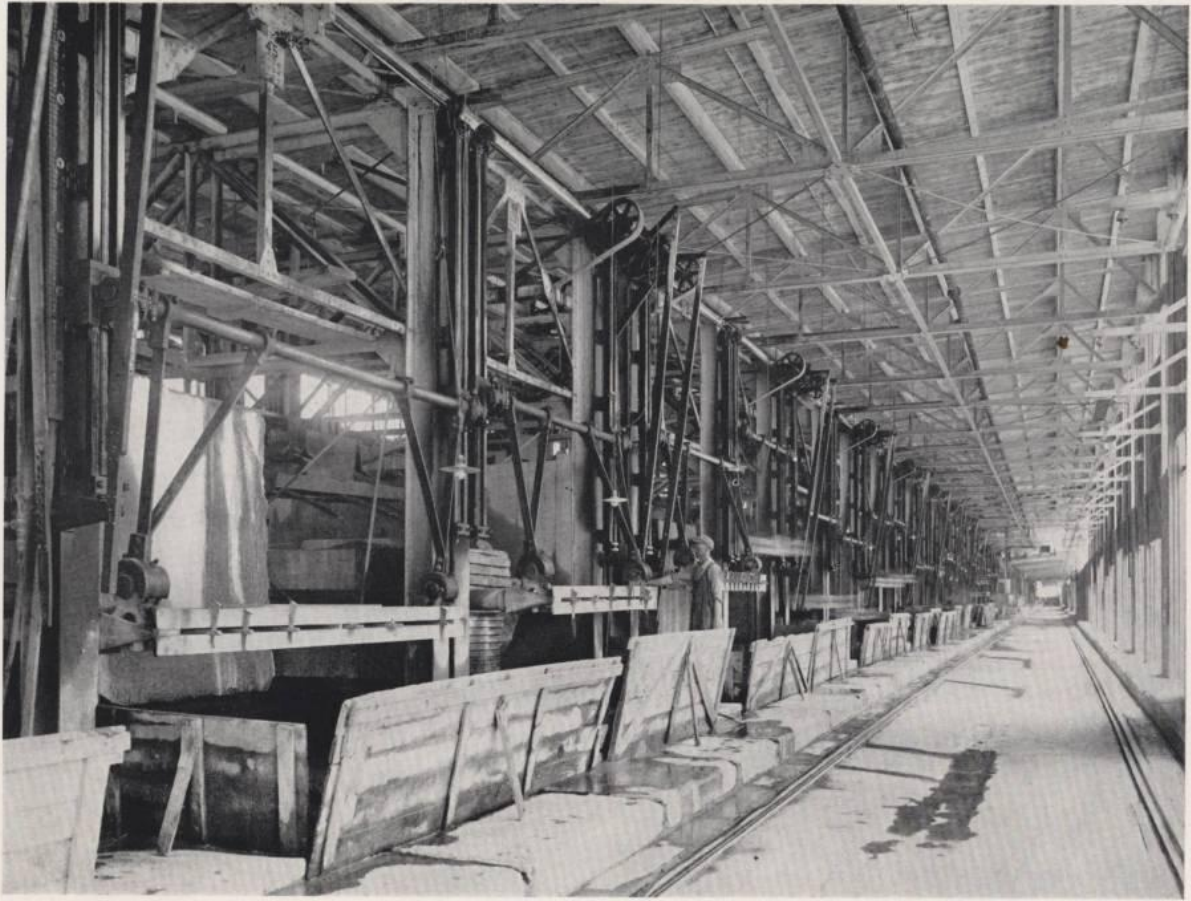
	Plate No.		Plate No.
<b>WHITE</b>		<b>GRAY</b>	
Brocadillo	1	Bois Jourdan	101
English Vein Vermont	2	Florence	102
Light Cloud	3	Highland Danby	103
Light Vein	4	Neshobe Gray Clouded	104
Listavena	5	Neshobe Gray Veined	105
Metawee Danby	6		
Standard White Danby	7		
Striped Brocadillo	8		
Vermont Pavonazzo	9		
		<b>RED</b>	
		French Rouge Antique	126
		Numidian Red	127
		Oriental	128
<b>CREAM</b>		Red Antique of Italy	129
Cremo	26	Rojo Alicante	130
Westland Cream Dark	27	Rosso Verona Alberato	131
Westland Green Vein			
Cream	28		
		<b>GREEN</b>	
<b>BUFF</b>		Olivo	151
Aurisina	51	Vermont Verde Antique	152
Botticino	52	Vert Issorie	153
Breche Oriental	53	Westland Cippolino	154
Hauteville	55		
Loreda Chiaro	56		
Napoleon Gray	57		
Roman Travertine	58		
Rose de Brignoles	59		
Tavernelle Clair	60	<b>BLACK</b>	
		Black & Gold	176
		Blue Belge	177
<b>YELLOW</b>		French Grand Antique	178
Siena Yellow	76	Radio Black	179



Close-up view of operations in one of the many tunnels in the famous Danby quarry, Danby, Vt.

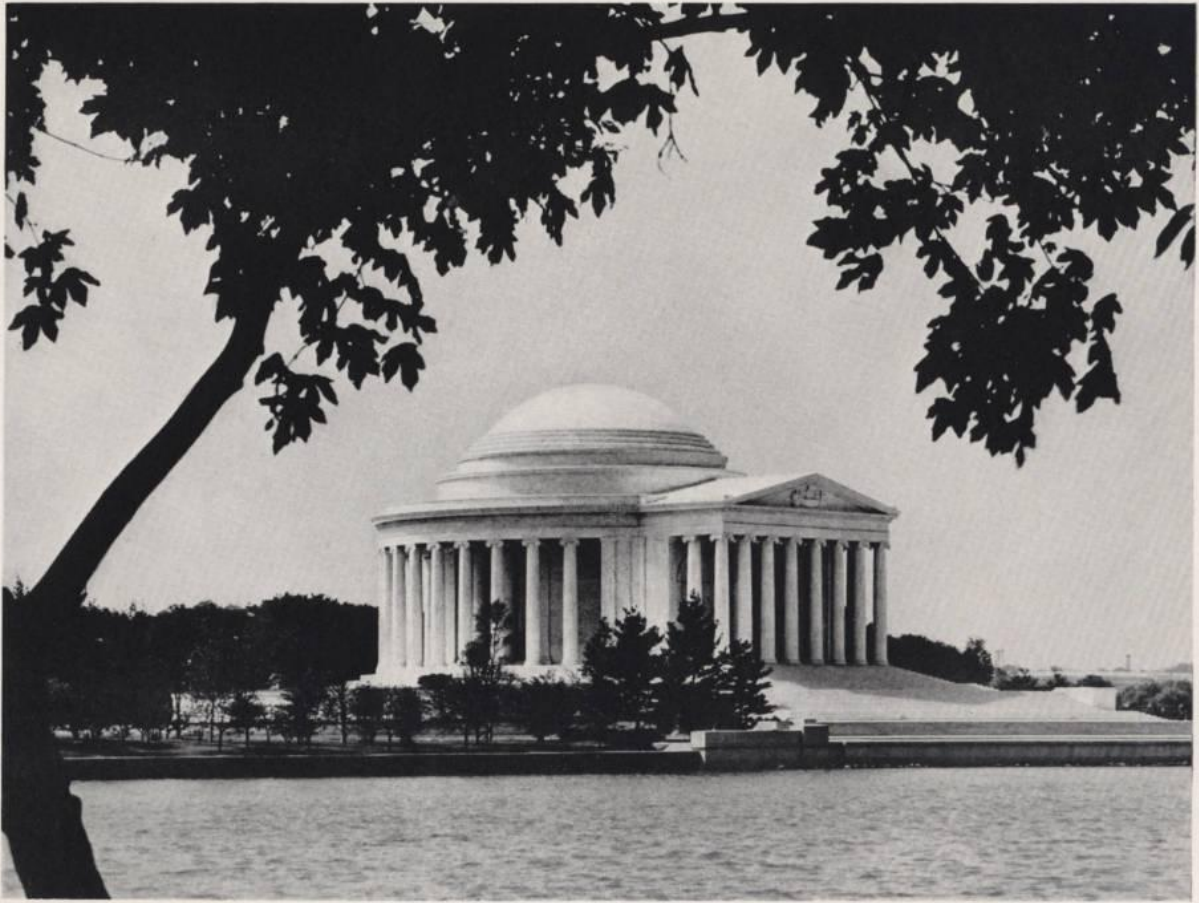


VERMONT MARBLE COMPANY



Interior of mill for sawing marble at West Rutland, Vt.

VERMONT MARBLE COMPANY



The Thomas Jefferson Memorial, Washington, D. C. • Imperial Danby Marble • Eggers & Higgins, Architects



VERMONT MARBLE COMPANY



Shrine Room, Indiana World War Memorial, Indianapolis, Ind. • Vermont Red Marble Columns  
Walker & Weeks, Architects

VERMONT MARBLE COMPANY



Magnin Store, Los Angeles, Calif. • Black Granite and White Marble • Myron Hunt and H. C. Chambers, Architects



• VERMONT MARBLE COMPANY • VERMONT MARBLE COMPANY • VERMONT MARBLE COMPANY • VERMONT MARBLE COMPANY •

THE MARBLE REPRODUCED ON THE REVERSE OF THIS SHEET IS

Brocadillo • Plate No. 1

QUARRIED IN VERMONT

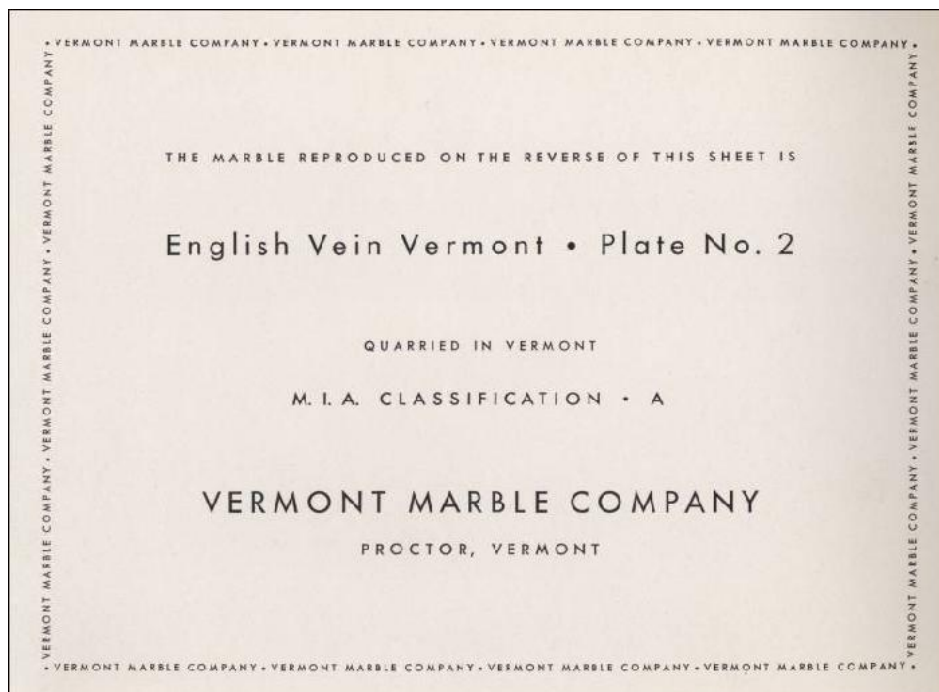
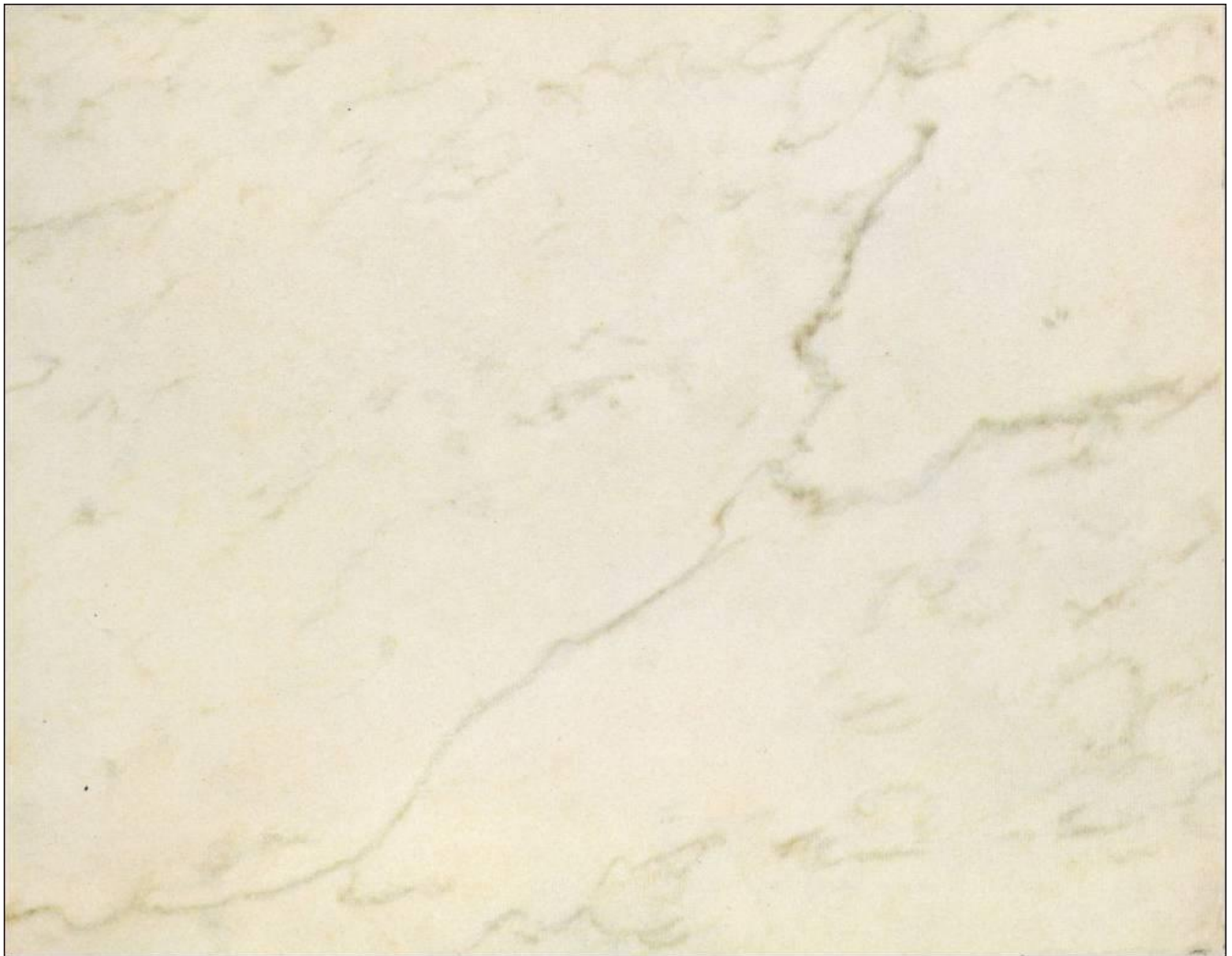
M. I. A. CLASSIFICATION • A

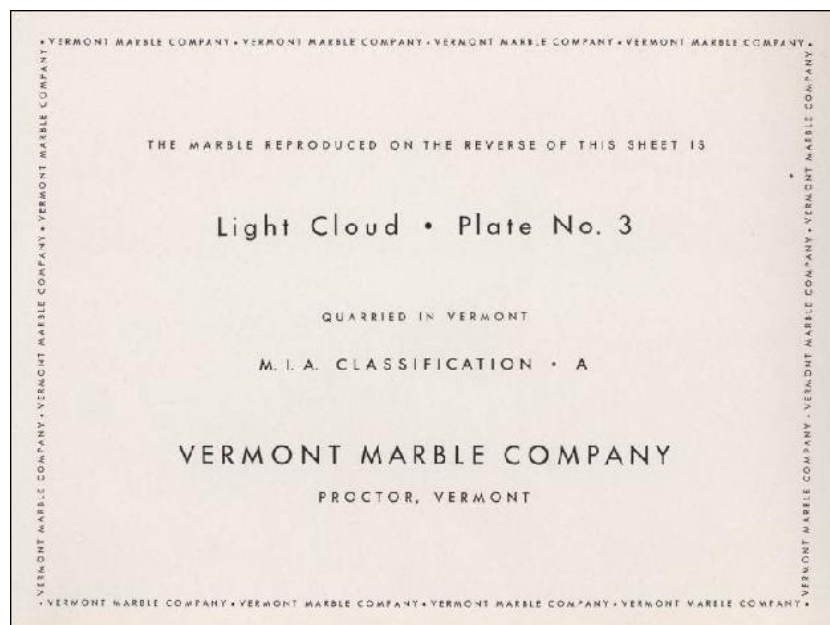
VERMONT MARBLE COMPANY

PROCTOR, VERMONT

• VERMONT MARBLE COMPANY • VERMONT MARBLE COMPANY • VERMONT MARBLE COMPANY • VERMONT MARBLE COMPANY •









• VERMONT MARBLE COMPANY • VERMONT MARBLE COMPANY • VERMONT MARBLE COMPANY • VERMONT MARBLE COMPANY •

THE MARBLE REPRODUCED ON THE REVERSE OF THIS SHEET IS

Light Vein • Plate No. 4

QUARRIED IN VERMONT

M. I. A. CLASSIFICATION • A

VERMONT MARBLE COMPANY

PROCTOR, VERMONT

• VERMONT MARBLE COMPANY • VERMONT MARBLE COMPANY • VERMONT MARBLE COMPANY • VERMONT MARBLE COMPANY •





• VERMONT MARBLE COMPANY • VERMONT MARBLE COMPANY • VERMONT MARBLE COMPANY • VERMONT MARBLE COMPANY •

THE MARBLE REPRODUCED ON THE REVERSE OF THIS SHEET IS

Listavena • Plate No. 5

QUARRIED IN VERMONT

M. I. A. CLASSIFICATION • A

VERMONT MARBLE COMPANY

PROCTOR, VERMONT

• VERMONT MARBLE COMPANY • VERMONT MARBLE COMPANY • VERMONT MARBLE COMPANY • VERMONT MARBLE COMPANY •



• VERMONT MARBLE COMPANY • VERMONT MARBLE COMPANY • VERMONT MARBLE COMPANY • VERMONT MARBLE COMPANY •

THE MARBLE REPRODUCED ON THE REVERSE OF THIS SHEET IS

Metawee Danby • Plate No. 6

QUARRIED IN VERMONT

M. I. A. CLASSIFICATION • A

VERMONT MARBLE COMPANY

PROCTOR, VERMONT

• VERMONT MARBLE COMPANY • VERMONT MARBLE COMPANY • VERMONT MARBLE COMPANY • VERMONT MARBLE COMPANY •



• VERMONT MARBLE COMPANY • VERMONT MARBLE COMPANY • VERMONT MARBLE COMPANY • VERMONT MARBLE COMPANY •

THE MARBLE REPRODUCED ON THE REVERSE OF THIS SHEET IS

**Standard White Danby • Plate No. 7**

QUARRIED IN VERMONT

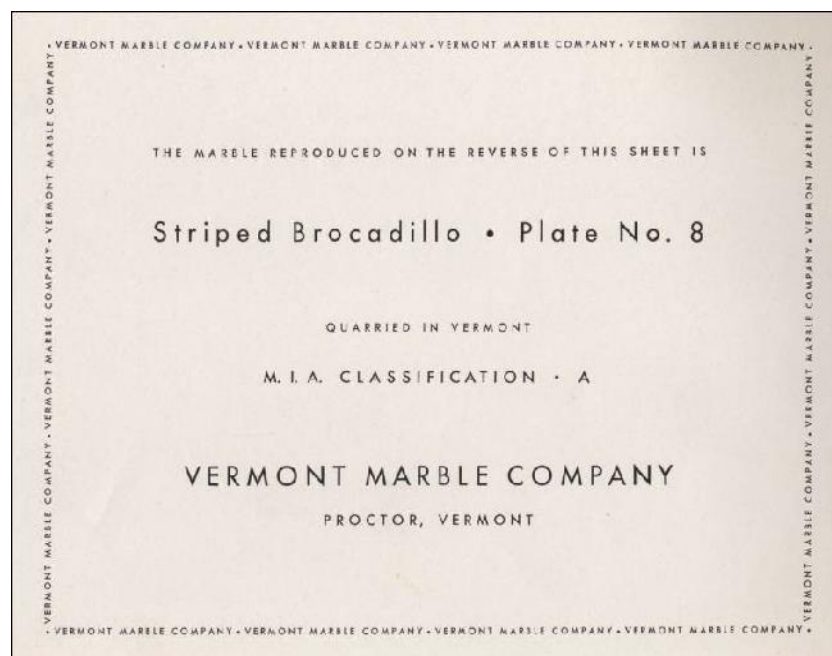
M. I. A. CLASSIFICATION • A

**VERMONT MARBLE COMPANY**

PROCTOR, VERMONT

• VERMONT MARBLE COMPANY • VERMONT MARBLE COMPANY • VERMONT MARBLE COMPANY • VERMONT MARBLE COMPANY •







• VERMONT MARBLE COMPANY • VERMONT MARBLE COMPANY • VERMONT MARBLE COMPANY • VERMONT MARBLE COMPANY •

THE MARBLE REPRODUCED ON THE REVERSE OF THIS SHEET IS

**Vermont Pavonazzo • Plate No. 9**

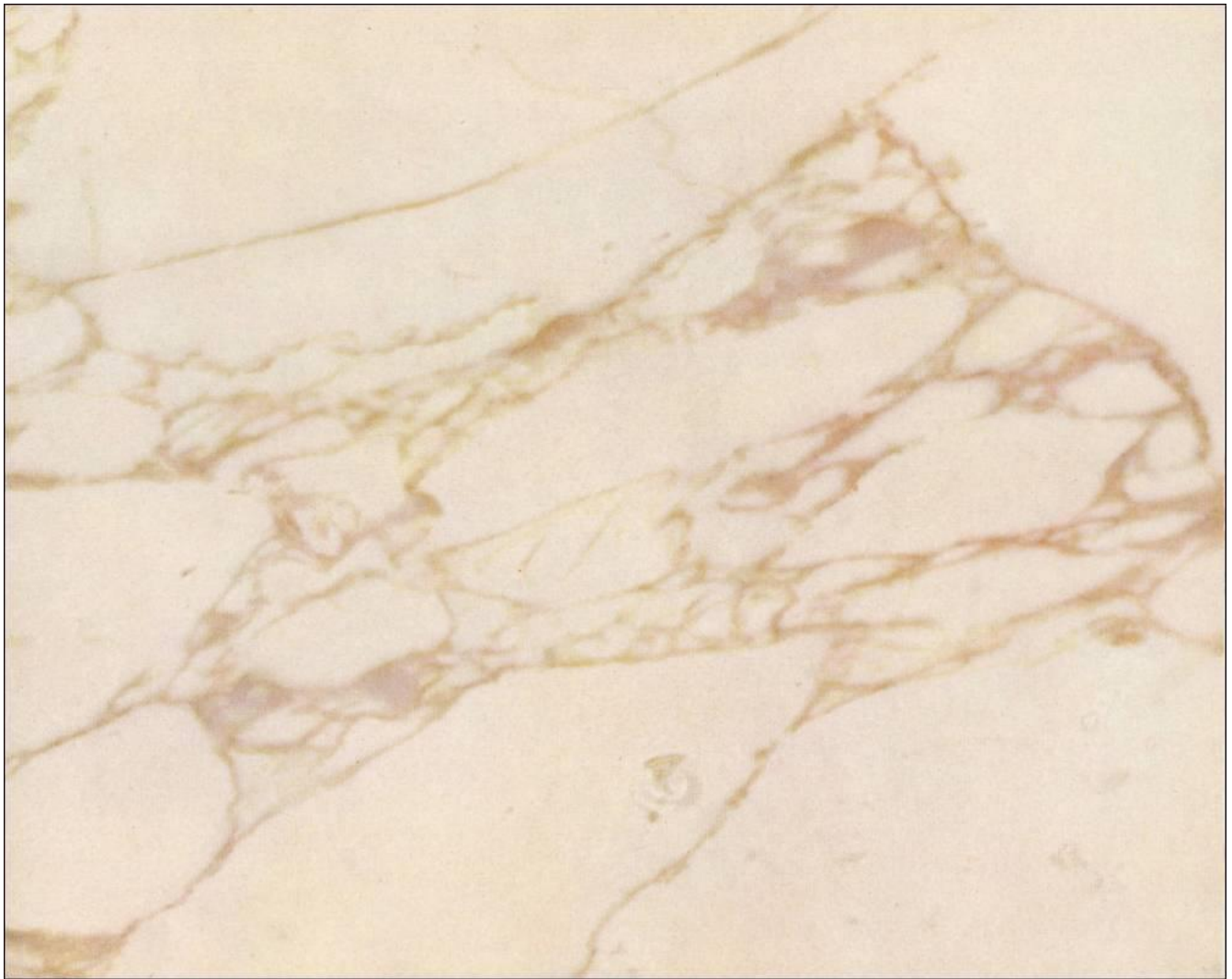
QUARRIED IN VERMONT

M. I. A. CLASSIFICATION • A

**VERMONT MARBLE COMPANY**

PROCTOR, VERMONT

• VERMONT MARBLE COMPANY • VERMONT MARBLE COMPANY • VERMONT MARBLE COMPANY • VERMONT MARBLE COMPANY •



• VERMONT MARBLE COMPANY • VERMONT MARBLE COMPANY • VERMONT MARBLE COMPANY • VERMONT MARBLE COMPANY •

THE MARBLE REPRODUCED ON THE REVERSE OF THIS SHEET IS

Cremo • Plate No. 26

QUARRIED IN ITALY

M. I. A. CLASSIFICATION • B

VERMONT MARBLE COMPANY

PROCTOR, VERMONT

• VERMONT MARBLE COMPANY • VERMONT MARBLE COMPANY • VERMONT MARBLE COMPANY • VERMONT MARBLE COMPANY •





• VERMONT MARBLE COMPANY • VERMONT MARBLE COMPANY • VERMONT MARBLE COMPANY • VERMONT MARBLE COMPANY •

THE MARBLE REPRODUCED ON THE REVERSE OF THIS SHEET IS

**Westland Cream Dark • Plate No. 27**

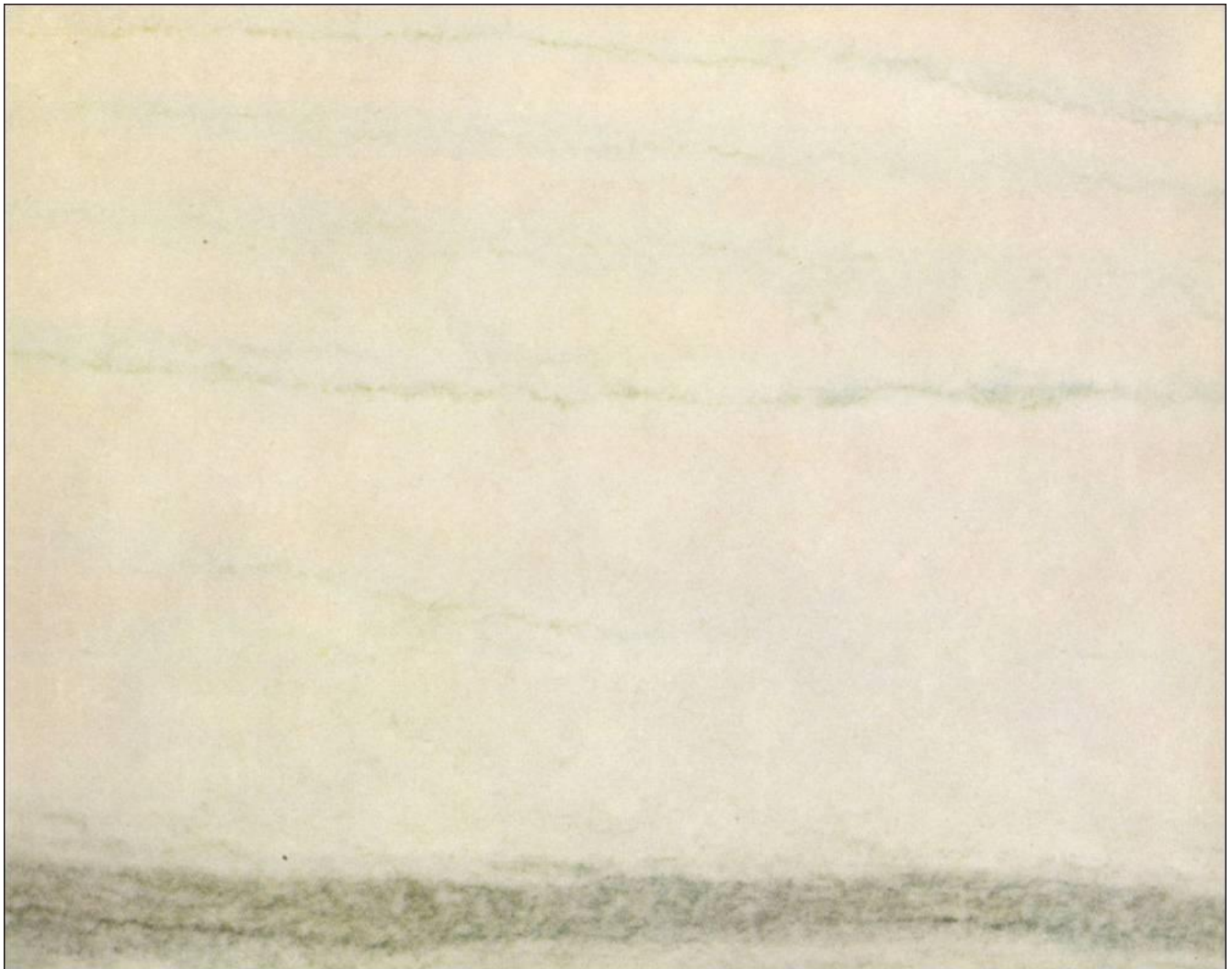
QUARRIED IN VERMONT

M. I. A. CLASSIFICATION • A

**VERMONT MARBLE COMPANY**

PROCTOR, VERMONT

• VERMONT MARBLE COMPANY • VERMONT MARBLE COMPANY • VERMONT MARBLE COMPANY • VERMONT MARBLE COMPANY •



• VERMONT MARBLE COMPANY • VERMONT MARBLE COMPANY • VERMONT MARBLE COMPANY • VERMONT MARBLE COMPANY •

THE MARBLE REPRODUCED ON THE REVERSE OF THIS SHEET IS

**Westland Green Vein Cream • Plate No. 28**

QUARRIED IN VERMONT

M. I. A. CLASSIFICATION • A

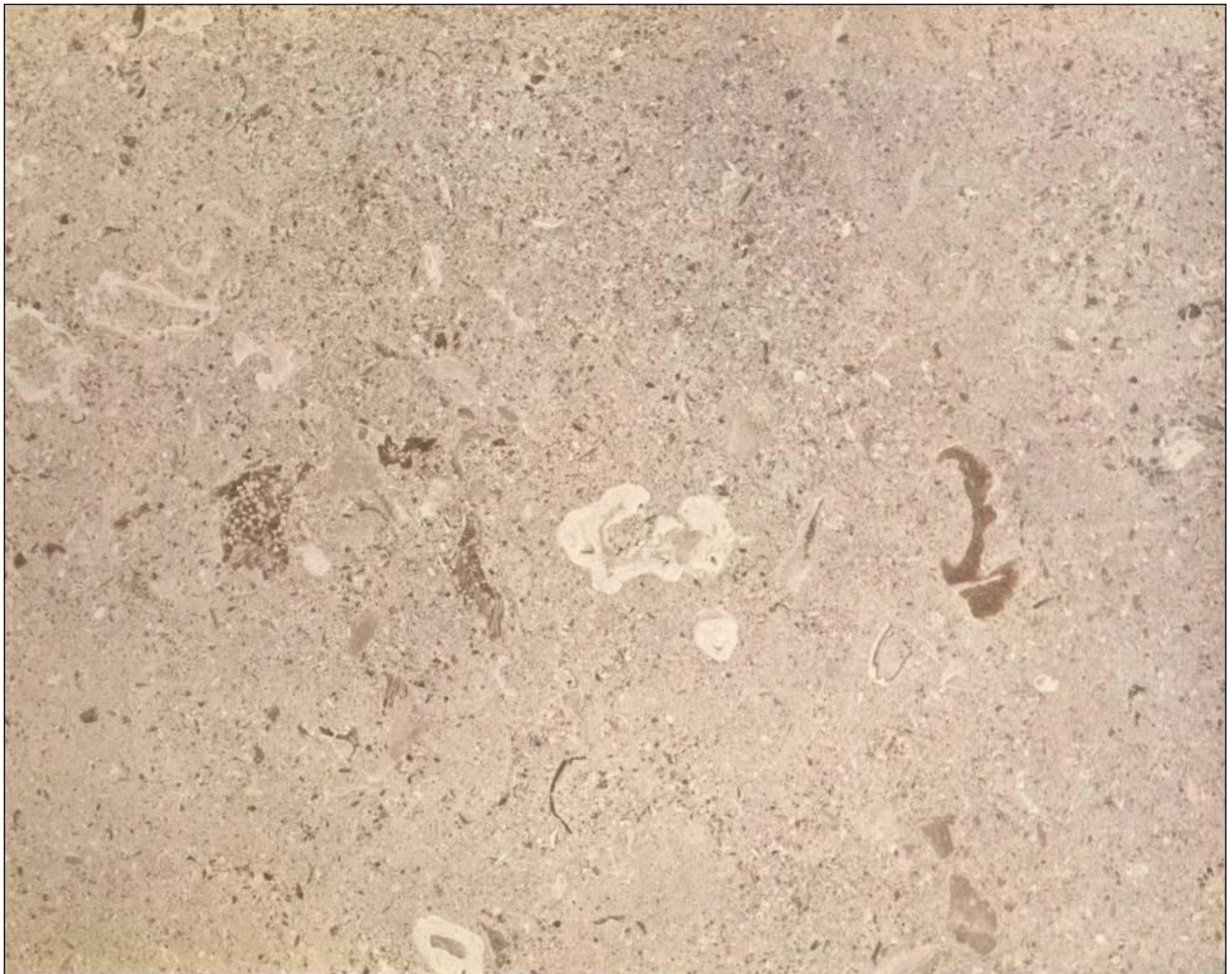
**VERMONT MARBLE COMPANY**

PROCTOR, VERMONT

• VERMONT MARBLE COMPANY • VERMONT MARBLE COMPANY • VERMONT MARBLE COMPANY • VERMONT MARBLE COMPANY •

• VERMONT MARBLE COMPANY • VERMONT MARBLE COMPANY • VERMONT MARBLE COMPANY • VERMONT MARBLE COMPANY •









• VERMONT MARBLE COMPANY • VERMONT MARBLE COMPANY • VERMONT MARBLE COMPANY • VERMONT MARBLE COMPANY •

THE MARBLE REPRODUCED ON THE REVERSE OF THIS SHEET IS

**Botticino • Plate No. 52**

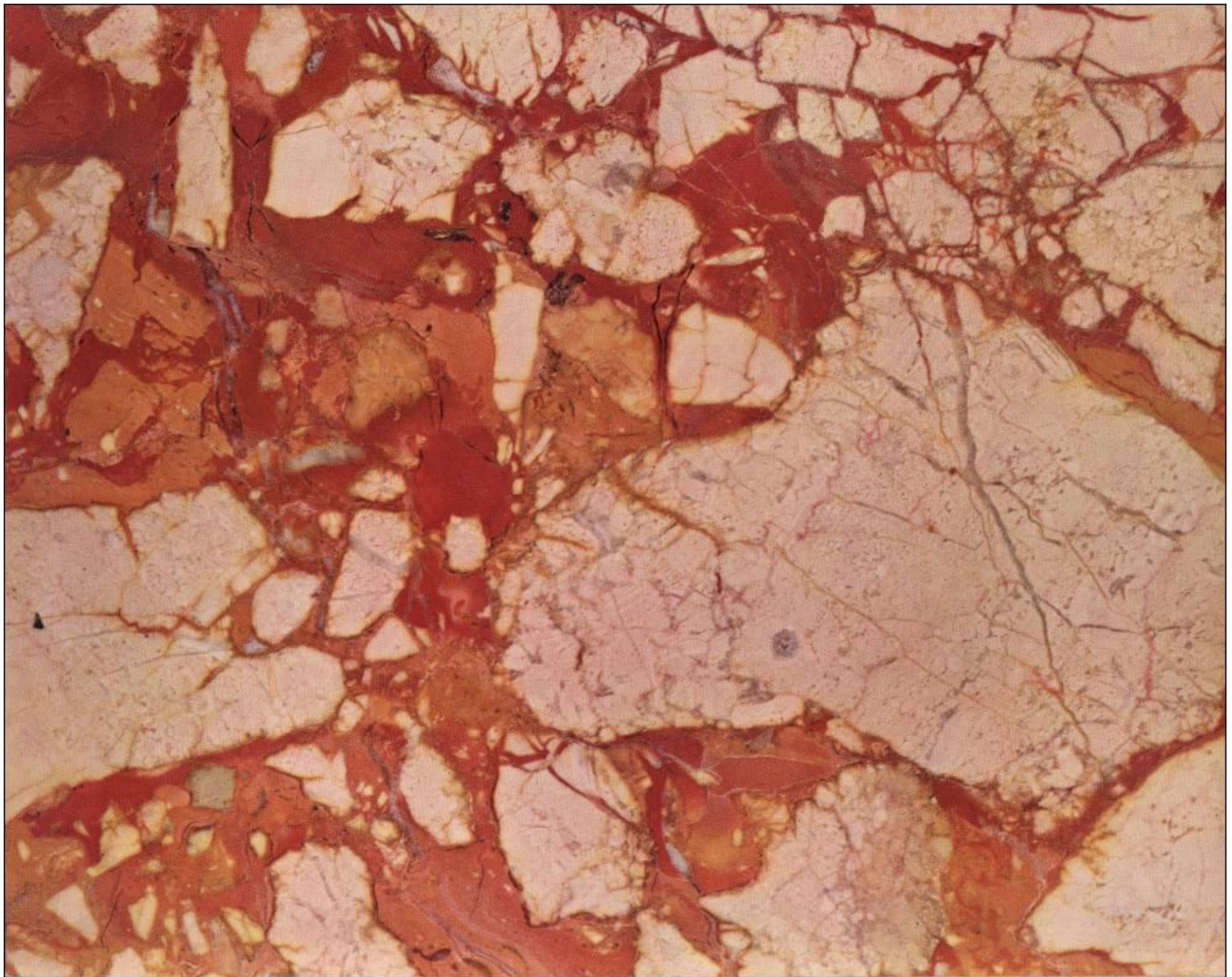
QUARRIED IN ITALY

M. I. A. CLASSIFICATION • C

**VERMONT MARBLE COMPANY**

PROCTOR, VERMONT

• VERMONT MARBLE COMPANY • VERMONT MARBLE COMPANY • VERMONT MARBLE COMPANY • VERMONT MARBLE COMPANY •



• VERMONT MARBLE COMPANY • VERMONT MARBLE COMPANY • VERMONT MARBLE COMPANY • VERMONT MARBLE COMPANY •

THE MARBLE REPRODUCED ON THE REVERSE OF THIS SHEET IS

**Breche Oriental • Plate No. 53**

QUARRIED IN FRANCE

M. I. A. CLASSIFICATION • D

**VERMONT MARBLE COMPANY**

PROCTOR, VERMONT

• VERMONT MARBLE COMPANY • VERMONT MARBLE COMPANY • VERMONT MARBLE COMPANY • VERMONT MARBLE COMPANY •





• VERMONT MARBLE COMPANY • VERMONT MARBLE COMPANY • VERMONT MARBLE COMPANY • VERMONT MARBLE COMPANY •

THE MARBLE REPRODUCED ON THE REVERSE OF THIS SHEET IS

Hauteville • Plate No. 55

QUARRIED IN FRANCE

M. I. A. CLASSIFICATION • C

VERMONT MARBLE COMPANY

PROCTOR, VERMONT

• VERMONT MARBLE COMPANY • VERMONT MARBLE COMPANY • VERMONT MARBLE COMPANY • VERMONT MARBLE COMPANY •

VERMONT MARBLE COMPANY • VERMONT MARBLE COMPANY • VERMONT MARBLE COMPANY • VERMONT MARBLE COMPANY •





• VERMONT MARBLE COMPANY • VERMONT MARBLE COMPANY • VERMONT MARBLE COMPANY • VERMONT MARBLE COMPANY •

THE MARBLE REPRODUCED ON THE REVERSE OF THIS SHEET IS

Loredo Chiaro • Plate No. 56

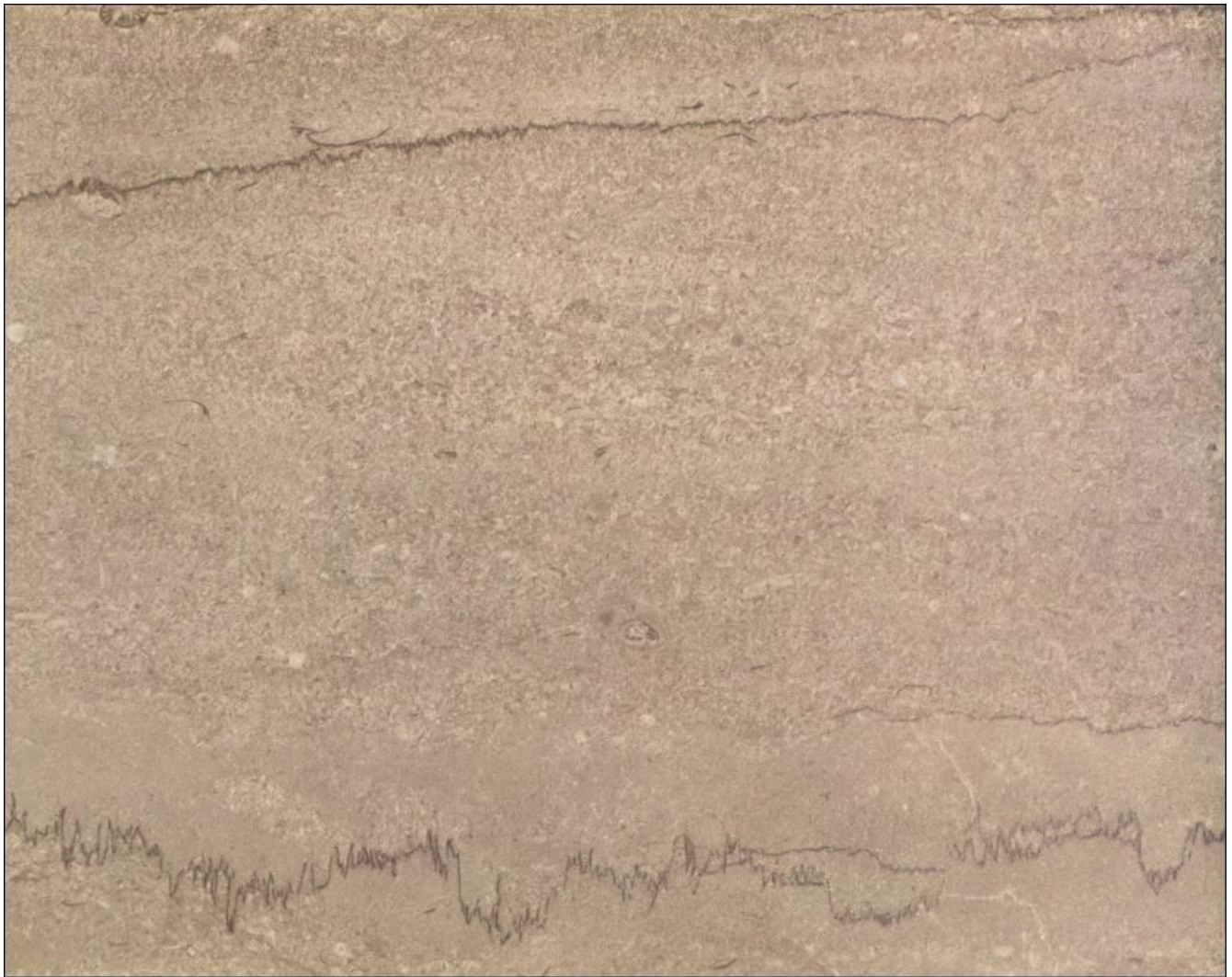
QUARRIED IN ITALY

M. I. A. CLASSIFICATION • D

VERMONT MARBLE COMPANY

PROCTOR, VERMONT

• VERMONT MARBLE COMPANY • VERMONT MARBLE COMPANY • VERMONT MARBLE COMPANY • VERMONT MARBLE COMPANY •



• VERMONT MARBLE COMPANY • VERMONT MARBLE COMPANY • VERMONT MARBLE COMPANY • VERMONT MARBLE COMPANY •

THE MARBLE REPRODUCED ON THE REVERSE OF THIS SHEET IS

Napoleon Gray • Plate No. 57

QUARRIED IN MISSOURI

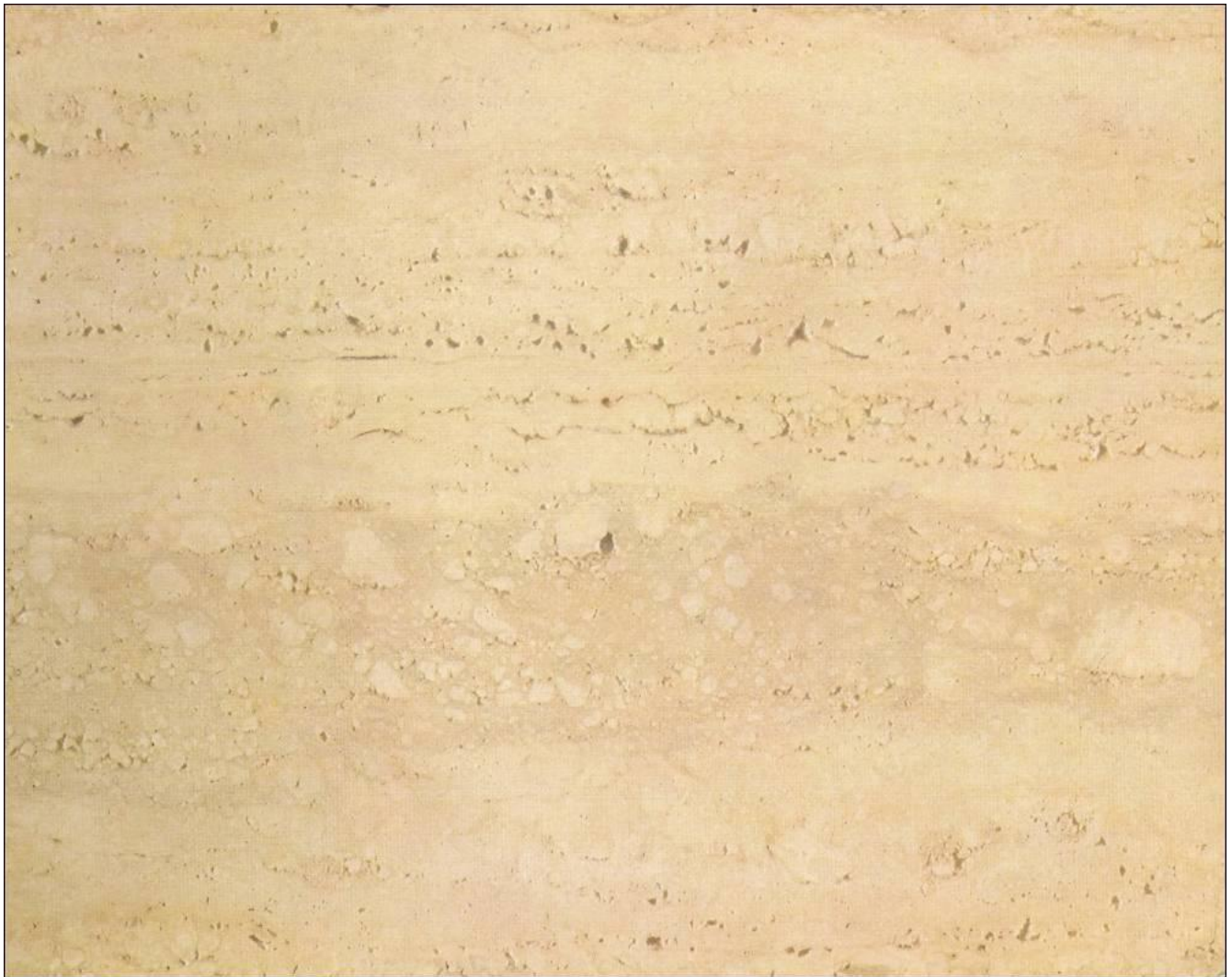
M. I. A. CLASSIFICATION • A

VERMONT MARBLE COMPANY

PROCTOR, VERMONT

• VERMONT MARBLE COMPANY • VERMONT MARBLE COMPANY • VERMONT MARBLE COMPANY • VERMONT MARBLE COMPANY •





• VERMONT MARBLE COMPANY • VERMONT MARBLE COMPANY • VERMONT MARBLE COMPANY • VERMONT MARBLE COMPANY •

THE MARBLE REPRODUCED ON THE REVERSE OF THIS SHEET IS

**Roman Travertine • Plate No. 58**

QUARRIED IN ITALY

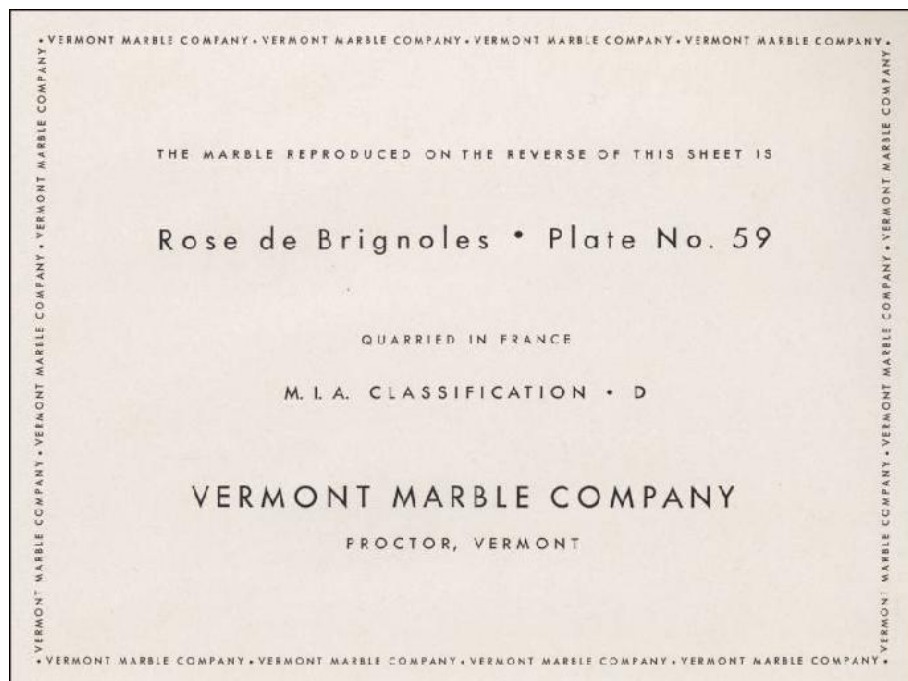
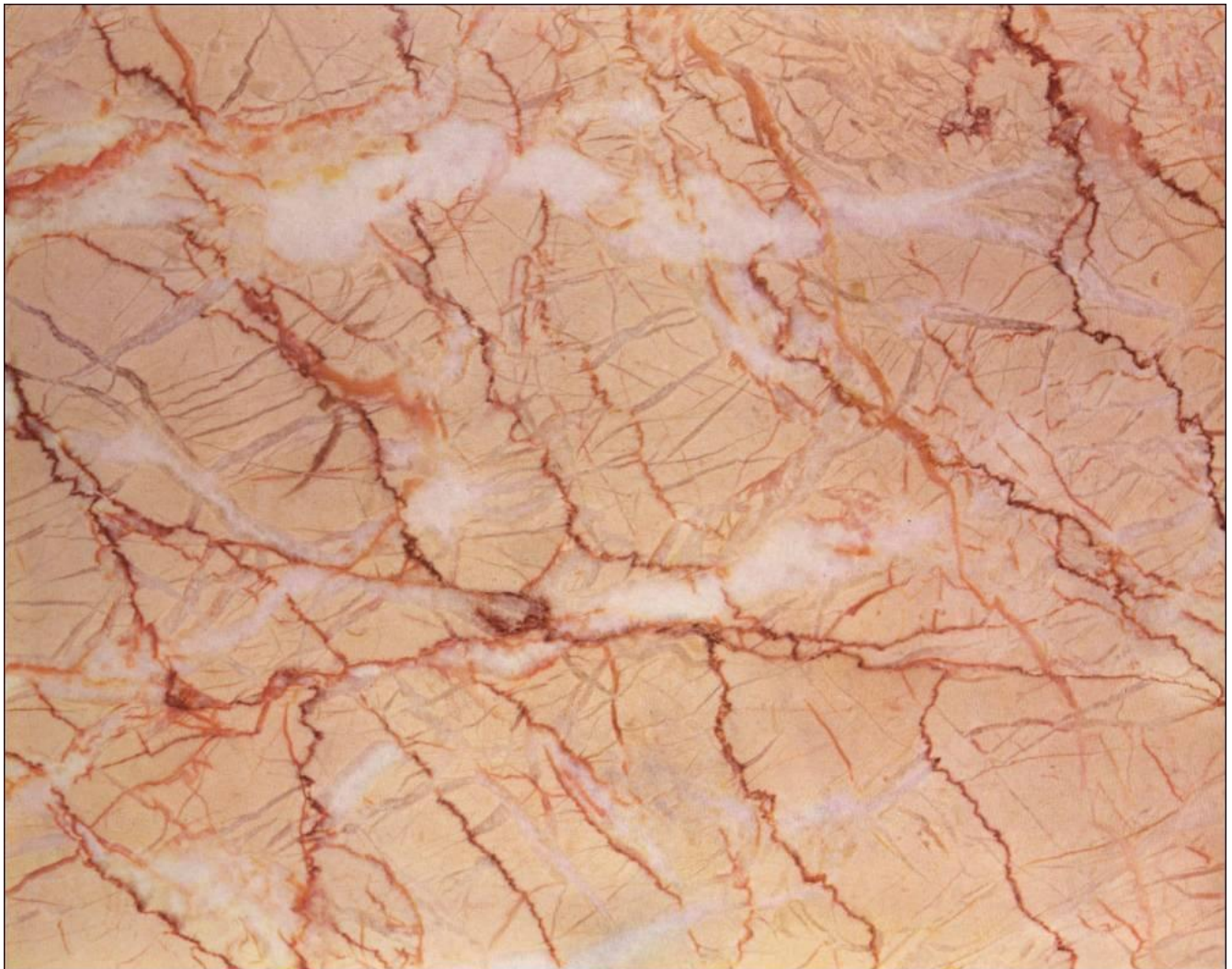
M. I. A. CLASSIFICATION • B

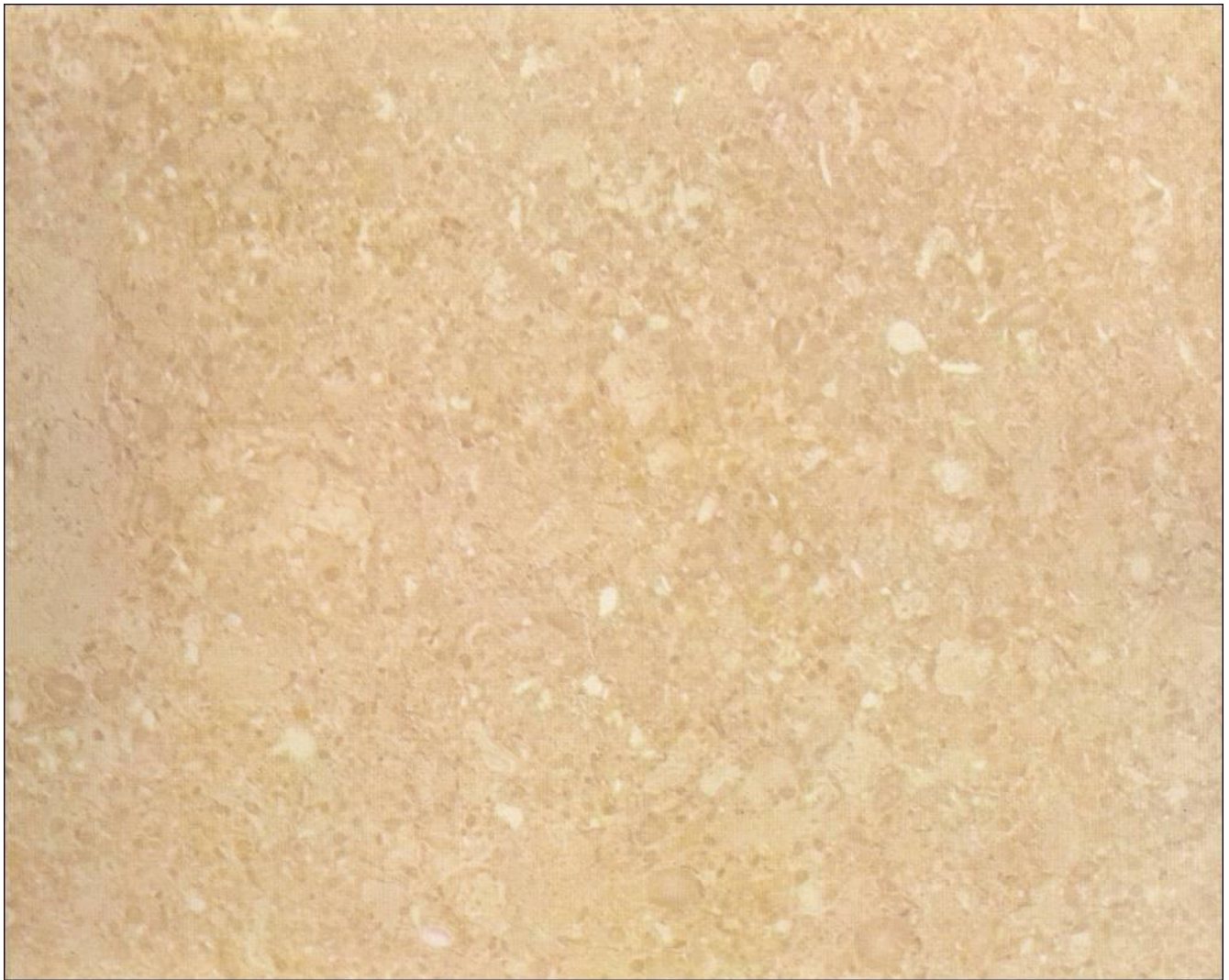
**VERMONT MARBLE COMPANY**

PROCTOR, VERMONT

• VERMONT MARBLE COMPANY • VERMONT MARBLE COMPANY • VERMONT MARBLE COMPANY • VERMONT MARBLE COMPANY •







• VERMONT MARBLE COMPANY • VERMONT MARBLE COMPANY • VERMONT MARBLE COMPANY • VERMONT MARBLE COMPANY •

THE MARBLE REPRODUCED ON THE REVERSE OF THIS SHEET IS

**Tavernelle Clair • Plate No. 60**

QUARRIED IN ITALY

M. I. A. CLASSIFICATION • C

**VERMONT MARBLE COMPANY**

PROCTOR, VERMONT

• VERMONT MARBLE COMPANY • VERMONT MARBLE COMPANY • VERMONT MARBLE COMPANY • VERMONT MARBLE COMPANY •





• VERMONT MARBLE COMPANY • VERMONT MARBLE COMPANY • VERMONT MARBLE COMPANY • VERMONT MARBLE COMPANY •

THE MARBLE REPRODUCED ON THE REVERSE OF THIS SHEET IS

**Siena Yellow • Plate No. 76**

QUARRIED IN ITALY

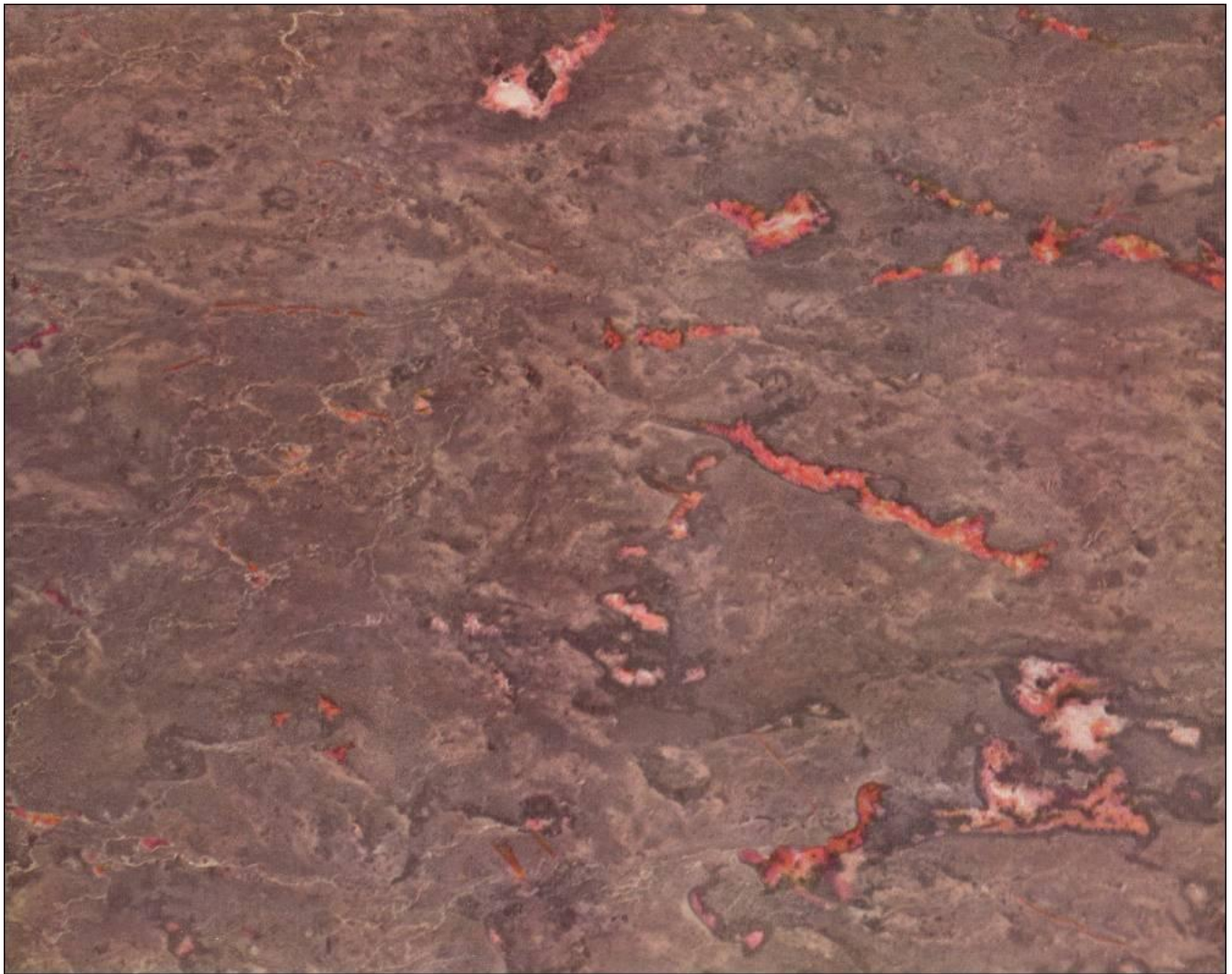
M. I. A. CLASSIFICATION • D

**VERMONT MARBLE COMPANY**

PROCTOR, VERMONT

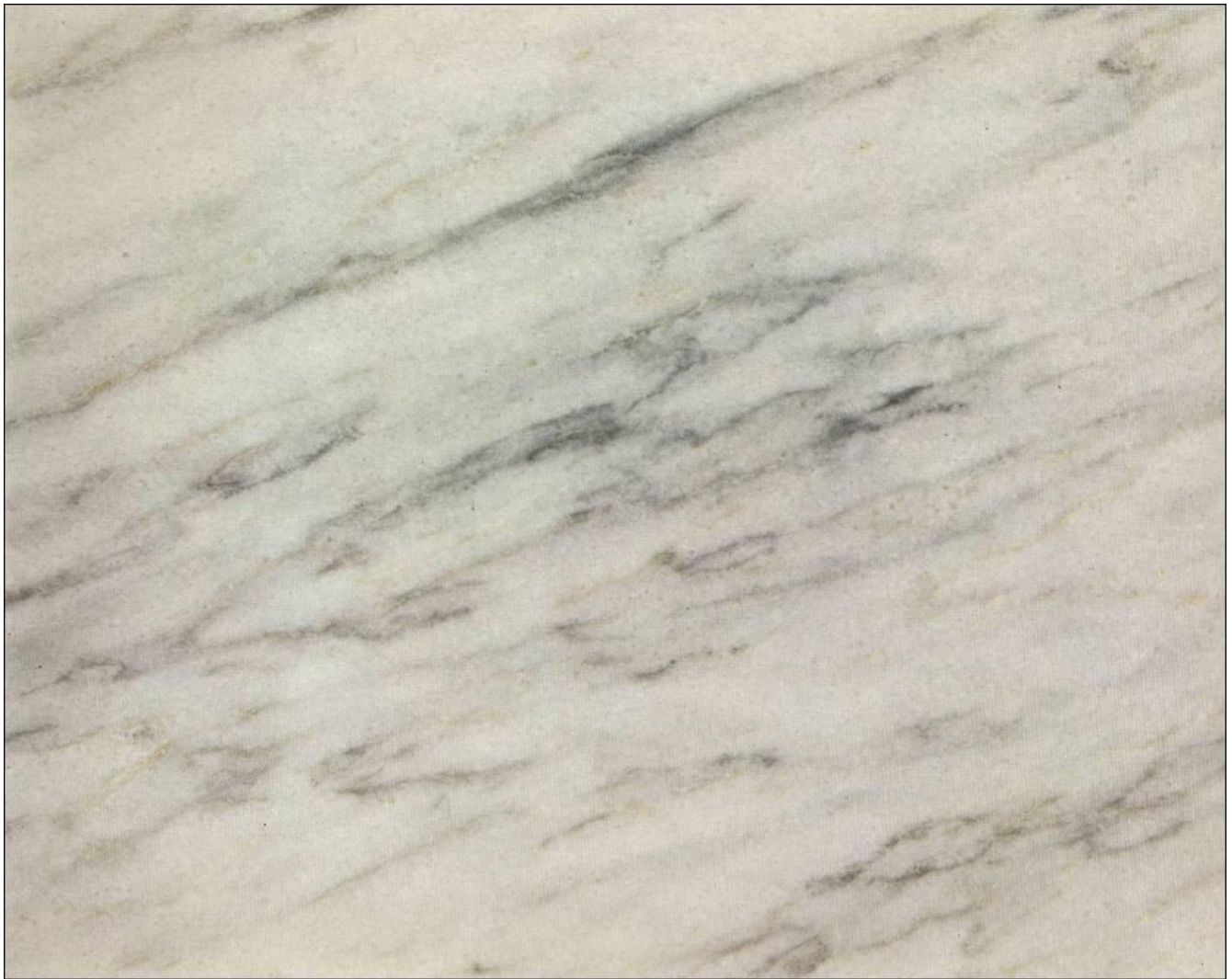
• VERMONT MARBLE COMPANY • VERMONT MARBLE COMPANY • VERMONT MARBLE COMPANY • VERMONT MARBLE COMPANY •











VERMONT MARBLE COMPANY • VERMONT MARBLE COMPANY • VERMONT MARBLE COMPANY • VERMONT MARBLE COMPANY •

THE MARBLE REPRODUCED ON THE REVERSE OF THIS SHEET IS

Highland Danby • Plate No. 103

QUARRIED IN VERMONT

M. I. A. CLASSIFICATION • A

VERMONT MARBLE COMPANY

PROCTOR, VERMONT

VERMONT MARBLE COMPANY • VERMONT MARBLE COMPANY • VERMONT MARBLE COMPANY • VERMONT MARBLE COMPANY •





• VERMONT MARBLE COMPANY • VERMONT MARBLE COMPANY • VERMONT MARBLE COMPANY • VERMONT MARBLE COMPANY •

THE MARBLE REPRODUCED ON THE REVERSE OF THIS SHEET IS

**Neshobe Gray Clouded • Plate No. 104**

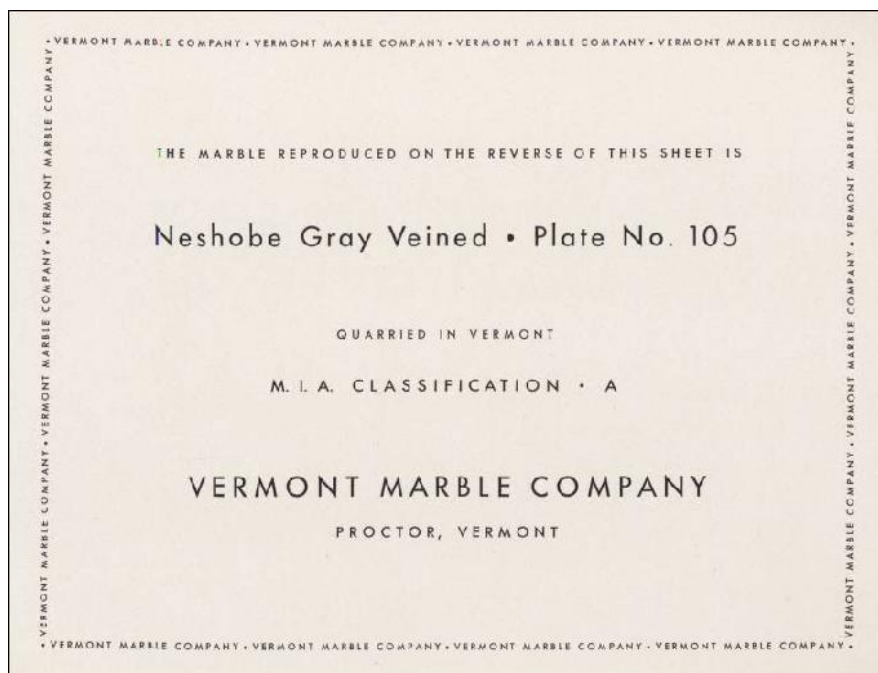
QUARRIED IN VERMONT

M. I. A. CLASSIFICATION • A

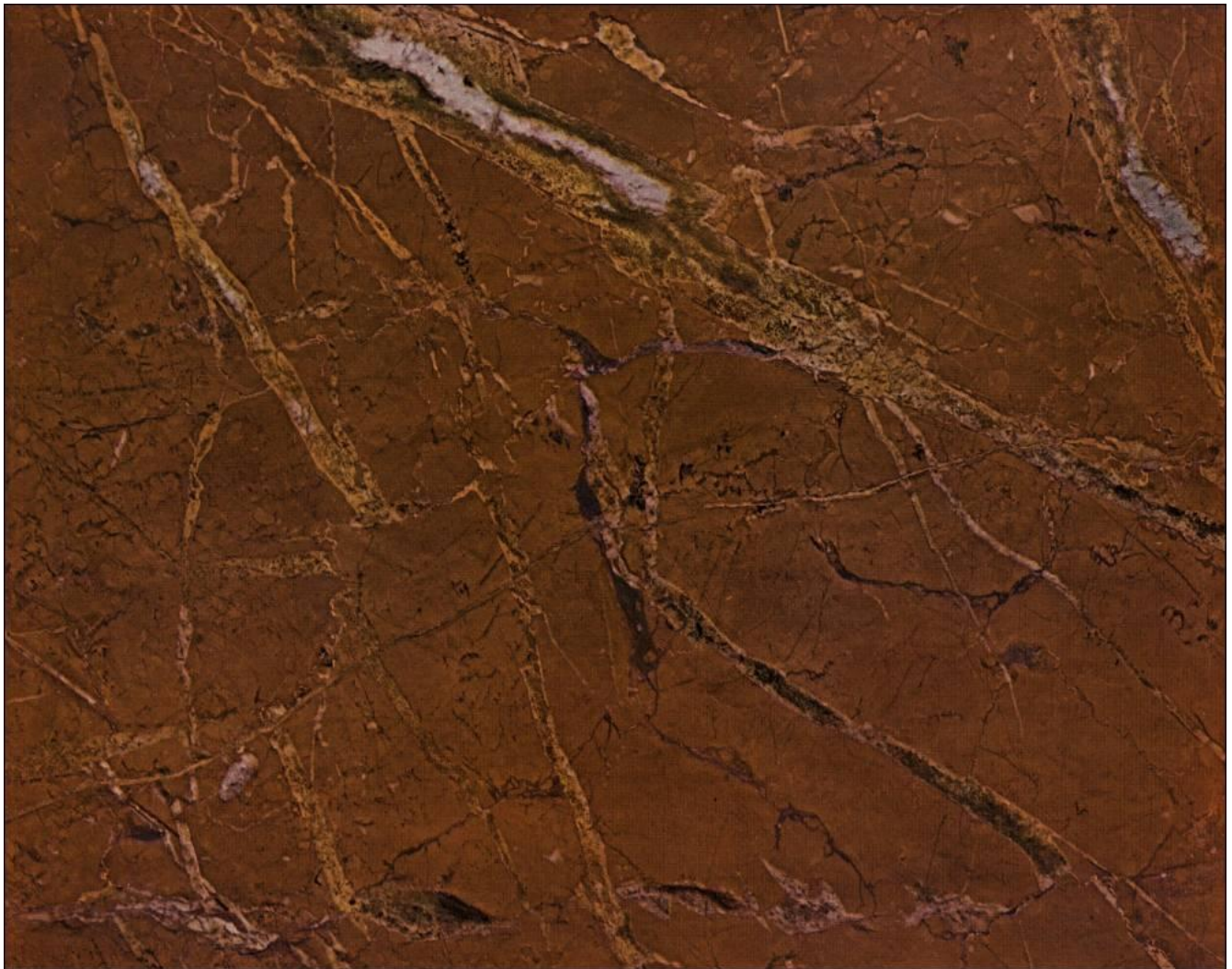
**VERMONT MARBLE COMPANY**

PROCTOR, VERMONT

• VERMONT MARBLE COMPANY • VERMONT MARBLE COMPANY • VERMONT MARBLE COMPANY • VERMONT MARBLE COMPANY •











• VERMONT MARBLE COMPANY • VERMONT MARBLE COMPANY • VERMONT MARBLE COMPANY • VERMONT MARBLE COMPANY •

THE MARBLE REPRODUCED ON THE REVERSE OF THIS SHEET IS

Numidian Red • Plate No. 127

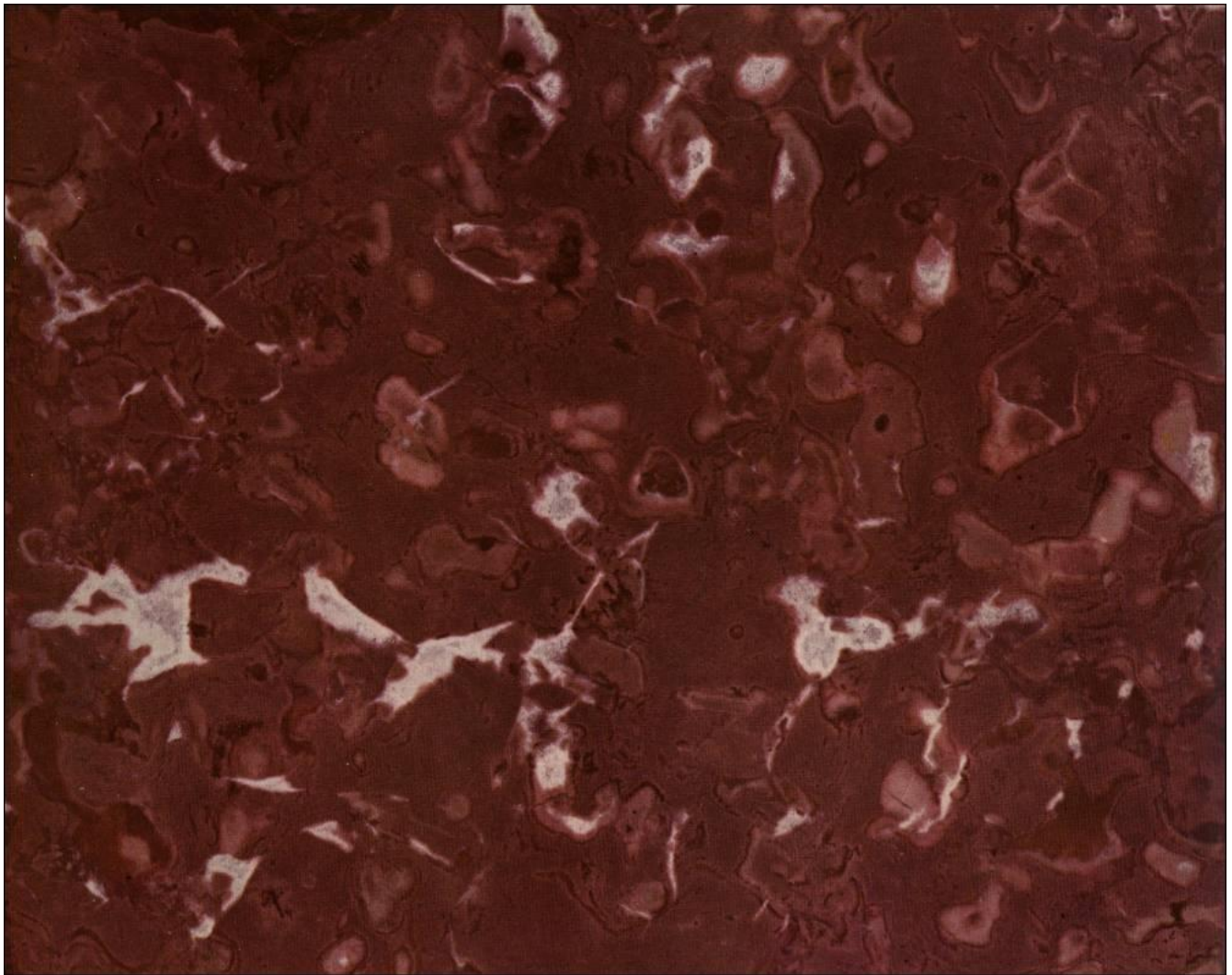
QUARRIED IN ALGERIA

M. I. A. CLASSIFICATION • D

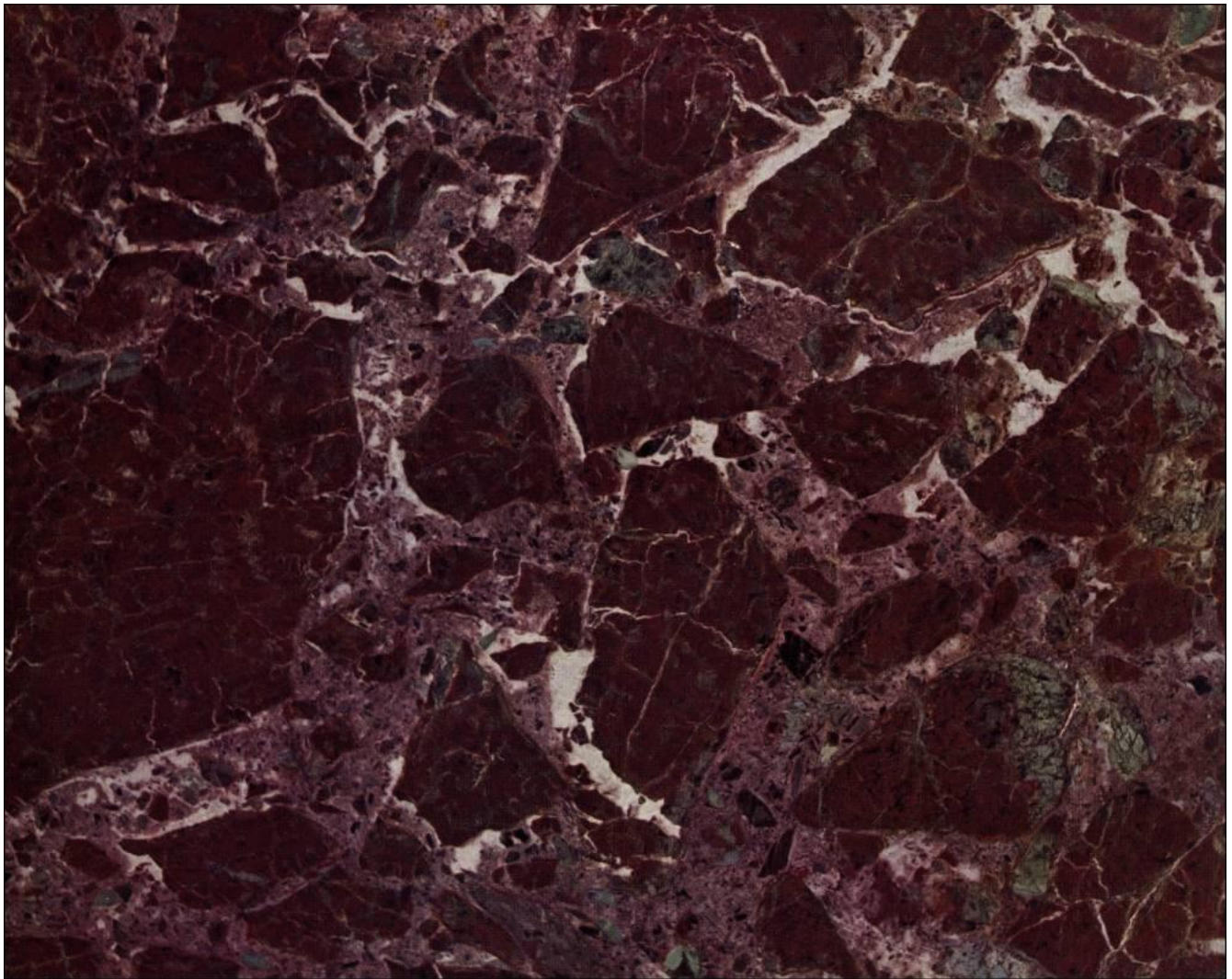
VERMONT MARBLE COMPANY

PROCTOR, VERMONT

• VERMONT MARBLE COMPANY • VERMONT MARBLE COMPANY • VERMONT MARBLE COMPANY • VERMONT MARBLE COMPANY •











• VERMONT MARBLE COMPANY • VERMONT MARBLE COMPANY • VERMONT MARBLE COMPANY • VERMONT MARBLE COMPANY •

THE MARBLE REPRODUCED ON THE REVERSE OF THIS SHEET IS

**Rojo Alicante • Plate No. 130**

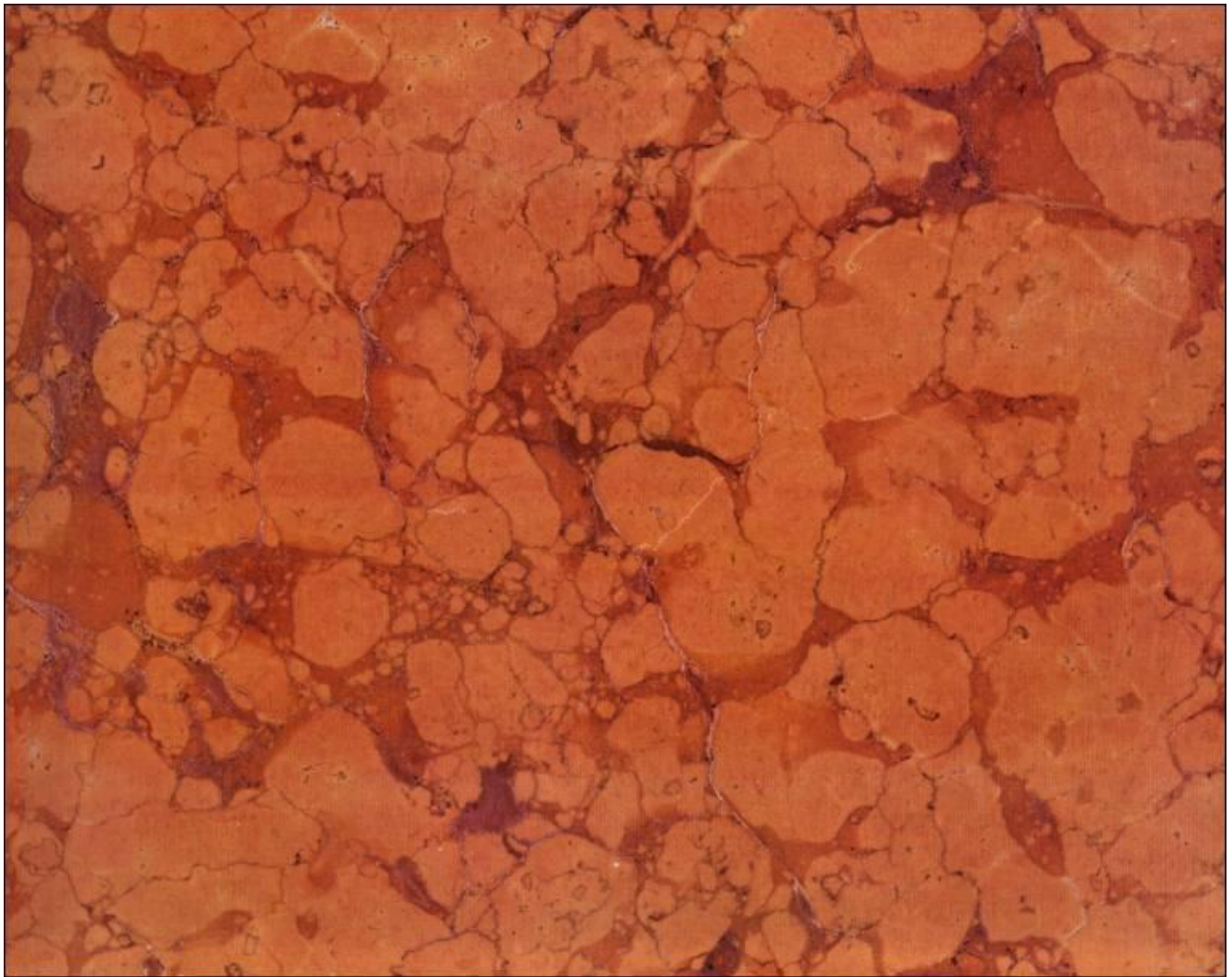
QUARRIED IN SPAIN

M. I. A. CLASSIFICATION • D

**VERMONT MARBLE COMPANY**

PROCTOR, VERMONT

• VERMONT MARBLE COMPANY • VERMONT MARBLE COMPANY • VERMONT MARBLE COMPANY • VERMONT MARBLE COMPANY •



• VERMONT MARBLE COMPANY • VERMONT MARBLE COMPANY • VERMONT MARBLE COMPANY • VERMONT MARBLE COMPANY •

THE MARBLE REPRODUCED ON THE REVERSE OF THIS SHEET IS

**Rosso Verona Alberato • Plate No. 131**

QUARRIED IN ITALY

M. I. A. CLASSIFICATION • C

**VERMONT MARBLE COMPANY**

PROCTOR, VERMONT

• VERMONT MARBLE COMPANY • VERMONT MARBLE COMPANY • VERMONT MARBLE COMPANY • VERMONT MARBLE COMPANY •





• VERMONT MARBLE COMPANY • VERMONT MARBLE COMPANY • VERMONT MARBLE COMPANY • VERMONT MARBLE COMPANY •

THE MARBLE REPRODUCED ON THE REVERSE OF THIS SHEET IS

**Olivo • Plate No. 151**

QUARRIED IN VERMONT

M. I. A. CLASSIFICATION • A

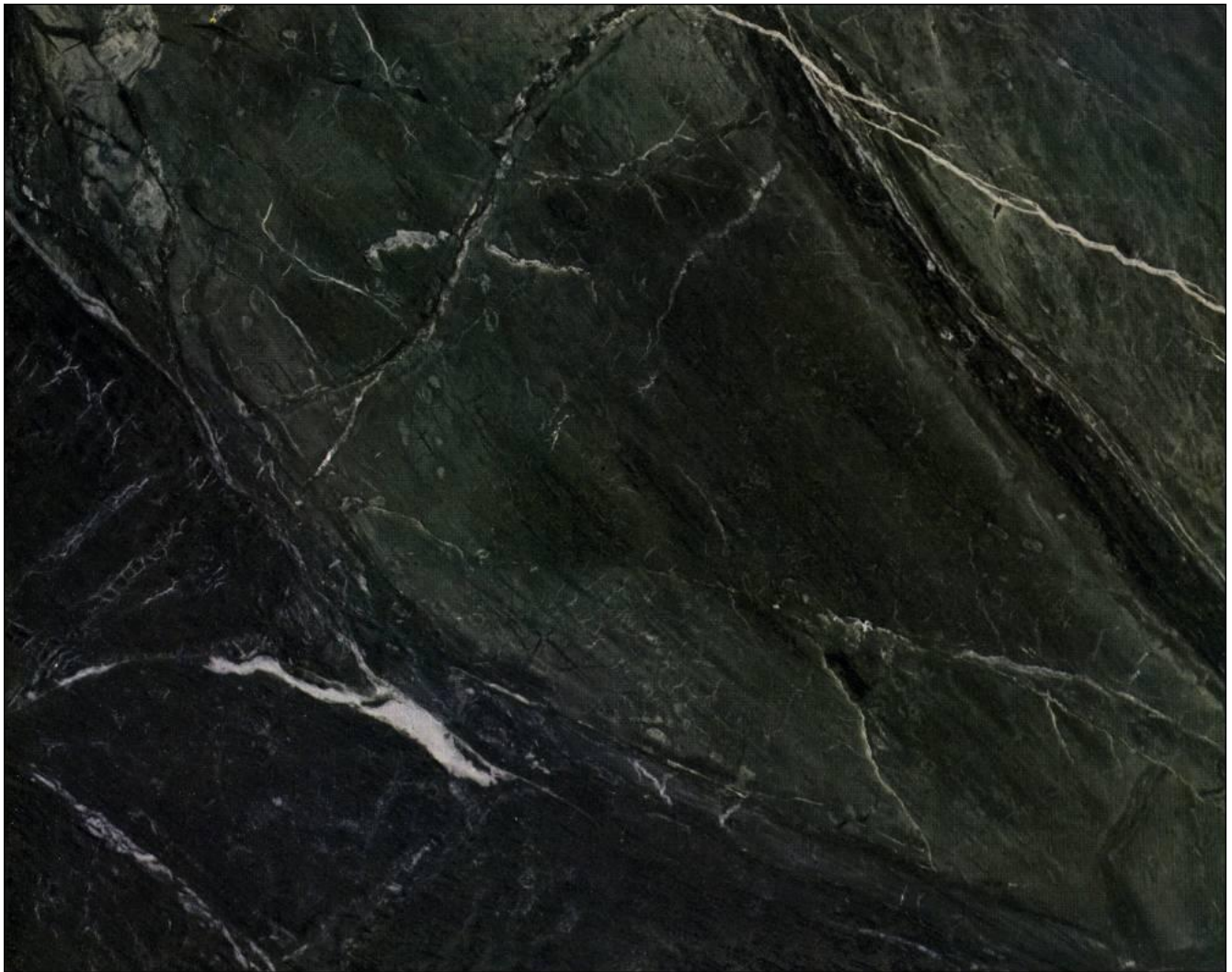
**VERMONT MARBLE COMPANY**

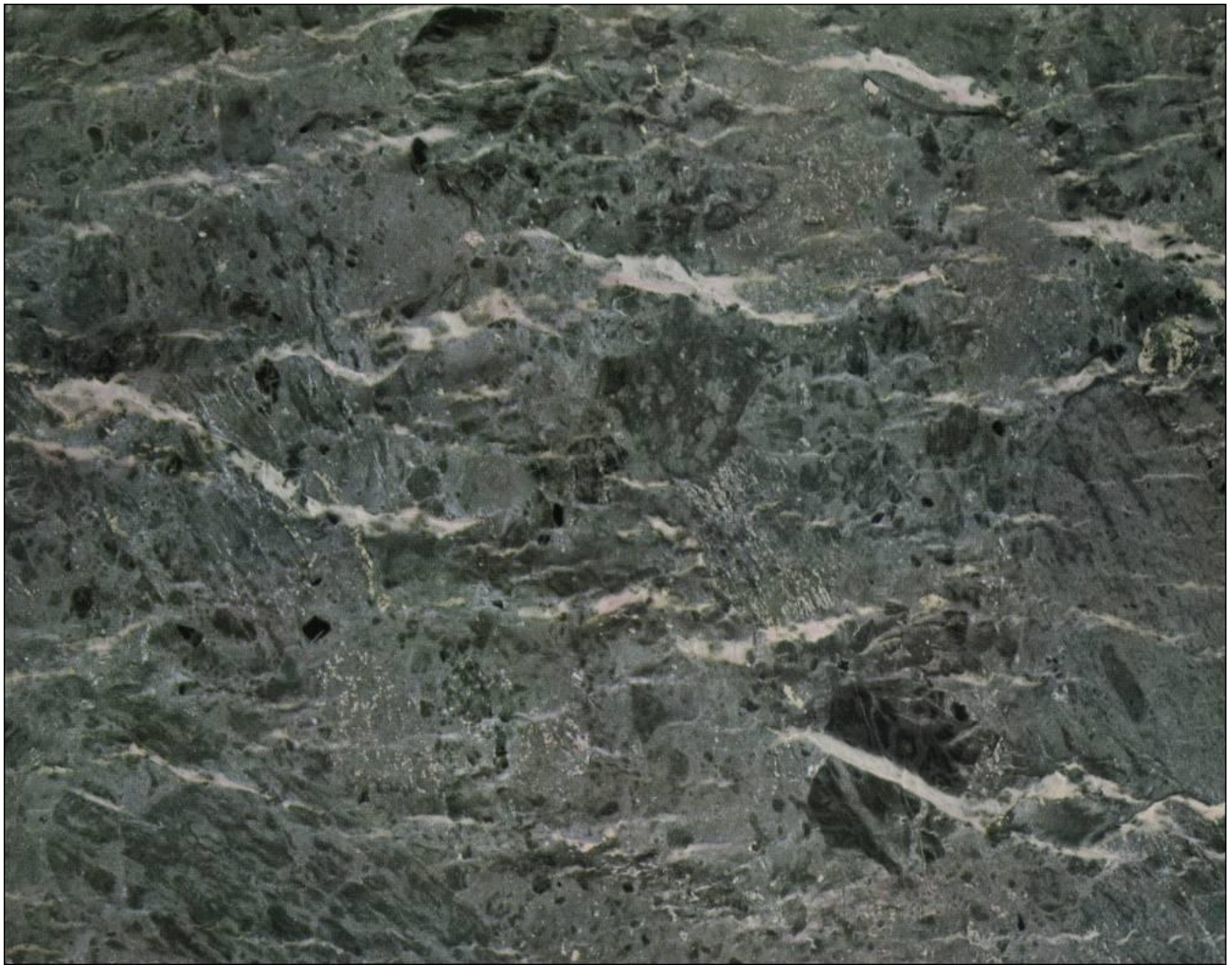
PROCTOR, VERMONT

• VERMONT MARBLE COMPANY • VERMONT MARBLE COMPANY • VERMONT MARBLE COMPANY • VERMONT MARBLE COMPANY •

VERMONT MARBLE COMPANY • VERMONT MARBLE COMPANY • VERMONT MARBLE COMPANY • VERMONT MARBLE COMPANY •











VERMONT MARBLE COMPANY • VERMONT MARBLE COMPANY • VERMONT MARBLE COMPANY • VERMONT MARBLE COMPANY •

THE MARBLE REPRODUCED ON THE REVERSE OF THIS SHEET IS

Westland Cippolino • Plate No. 154

QUARRIED IN VERMONT

M. I. A. CLASSIFICATION • A

VERMONT MARBLE COMPANY

PROCTOR, VERMONT

VERMONT MARBLE COMPANY • VERMONT MARBLE COMPANY • VERMONT MARBLE COMPANY • VERMONT MARBLE COMPANY •



VERMONT MARBLE COMPANY • VERMONT MARBLE COMPANY • VERMONT MARBLE COMPANY • VERMONT MARBLE COMPANY •

THE MARBLE REPRODUCED ON THE REVERSE OF THIS SHEET IS

**Black and Gold • Plate No. 176**

QUARRIED IN ITALY

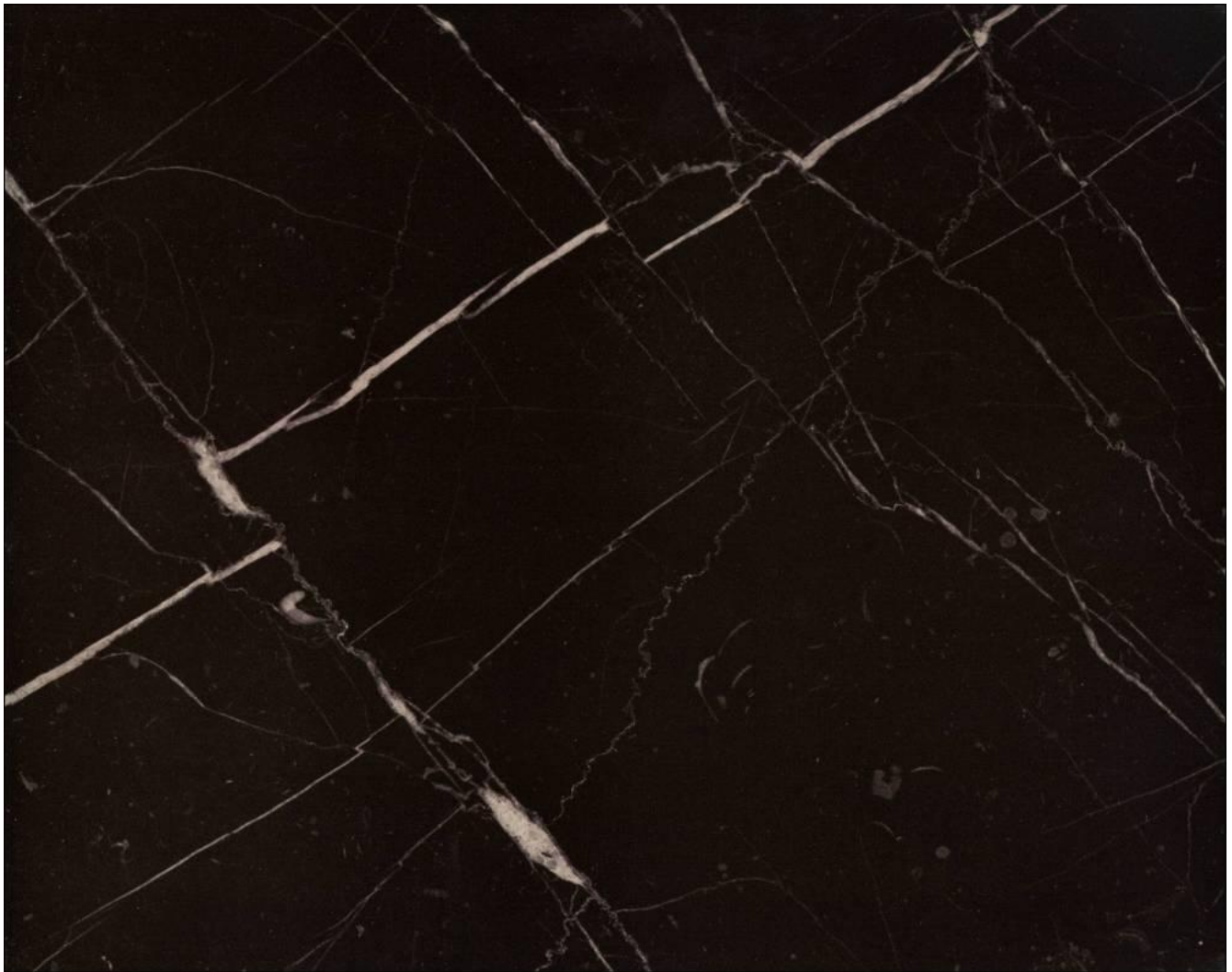
M. I. A. CLASSIFICATION • D

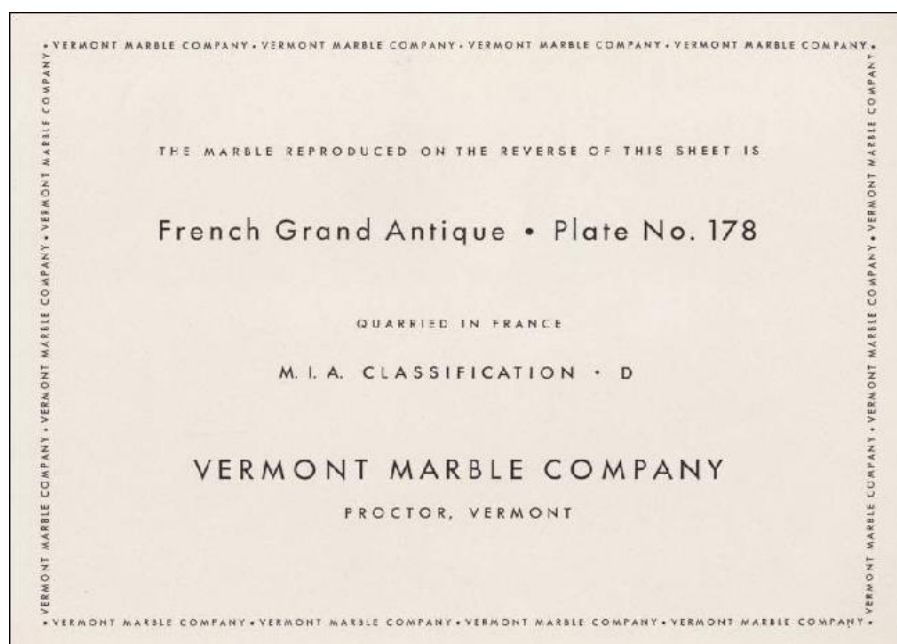
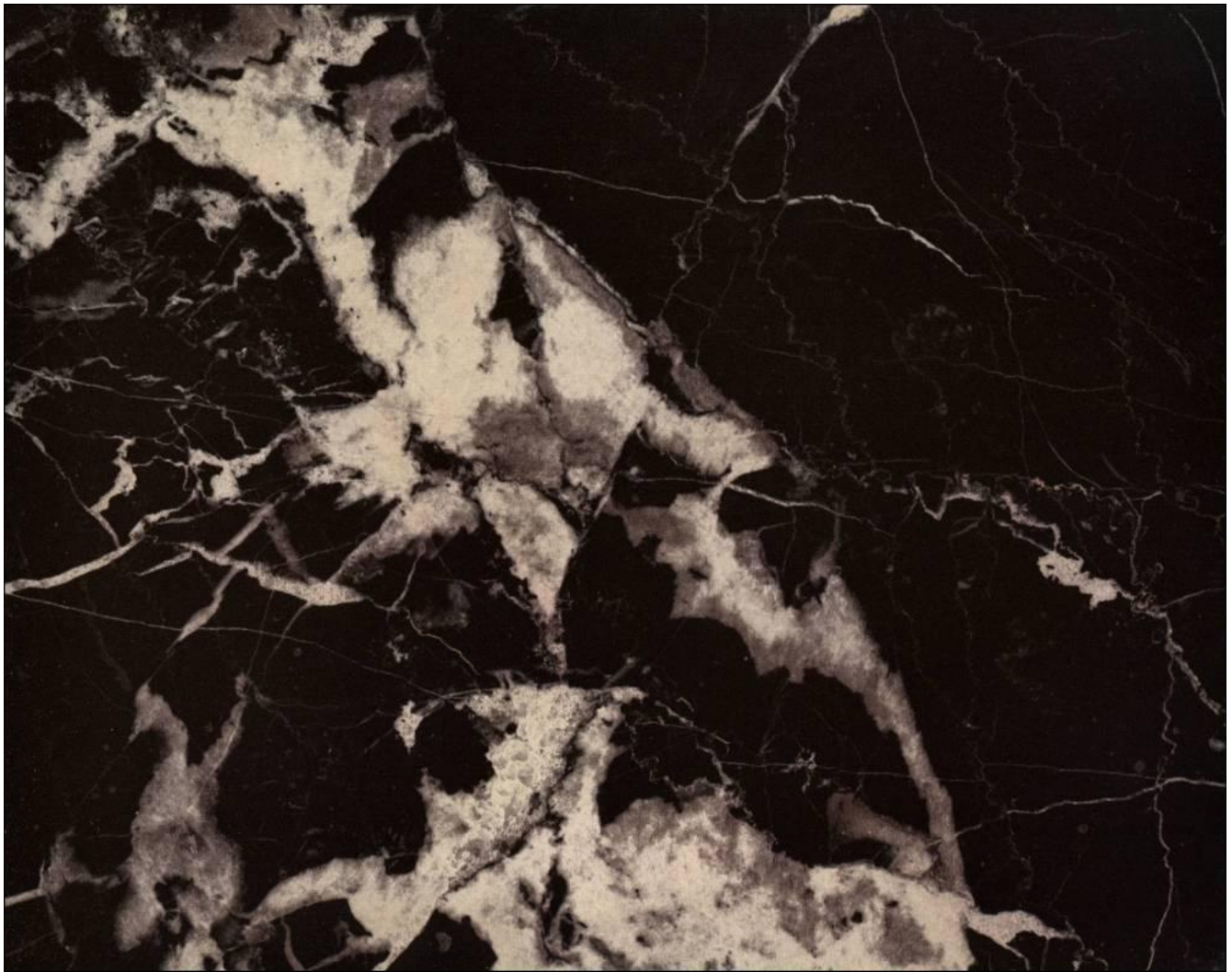
**VERMONT MARBLE COMPANY**

PROCTOR, VERMONT

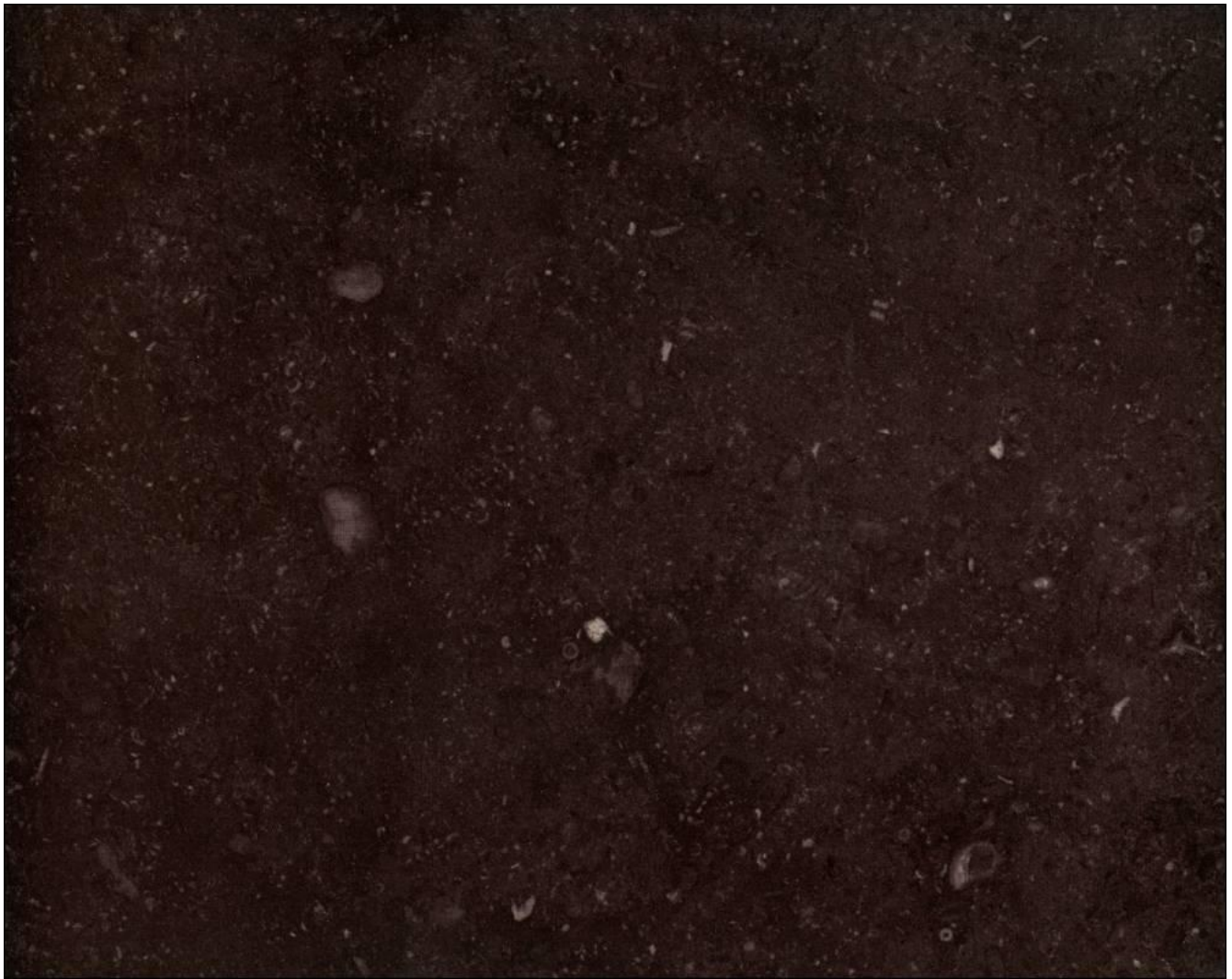
VERMONT MARBLE COMPANY • VERMONT MARBLE COMPANY • VERMONT MARBLE COMPANY • VERMONT MARBLE COMPANY •











• VERMONT MARBLE COMPANY • VERMONT MARBLE COMPANY • VERMONT MARBLE COMPANY • VERMONT MARBLE COMPANY •

THE MARBLE REPRODUCED ON THE REVERSE OF THIS SHEET IS

**Radio Black • Plate No. 179**

QUARRIED IN VERMONT

M. I. A. CLASSIFICATION • A

**VERMONT MARBLE COMPANY**

PROCTOR, VERMONT

• VERMONT MARBLE COMPANY • VERMONT MARBLE COMPANY • VERMONT MARBLE COMPANY • VERMONT MARBLE COMPANY •

VERMONT MARBLE COMPANY



One of the home plants housing the Marble Exhibit, Monument and Exterior Building Shops, Proctor, Vt.



