

Modern Memorial Art Catalog

Some Examples Cut in Stony Creek, Milford Pink and
Victoria White Granites

The Dodds Granite Company

Main Office: Milford, Massachusetts

Quarries & Plants: Milford, Massachusetts;
Stony Creek, Connecticut; Keene, New Hampshire

New York City Office: 814 Pershing Square Building

(No date of publication is shown in the booklet.)

Presented on the Stone Quarries and Beyond web site

<http://quarriesandbeyond.org/>

Peggy B. Perazzo – Email: pbperazzo@comcast.net

March 2011

The cover features a decorative border with two tall obelisks on the left and right sides. At the top, a winged figure (Ankh) is centered. The background is a light greenish-blue. The title is in gold lettering. Below the title is a small gold emblem. The publisher's name is in gold lettering. The bottom section features a landscape with pyramids, palm trees, a sphinx, and camels.

MODERN MEMORIAL ART



The DODDS GRANITE CO.

MODERN MEMORIAL ART

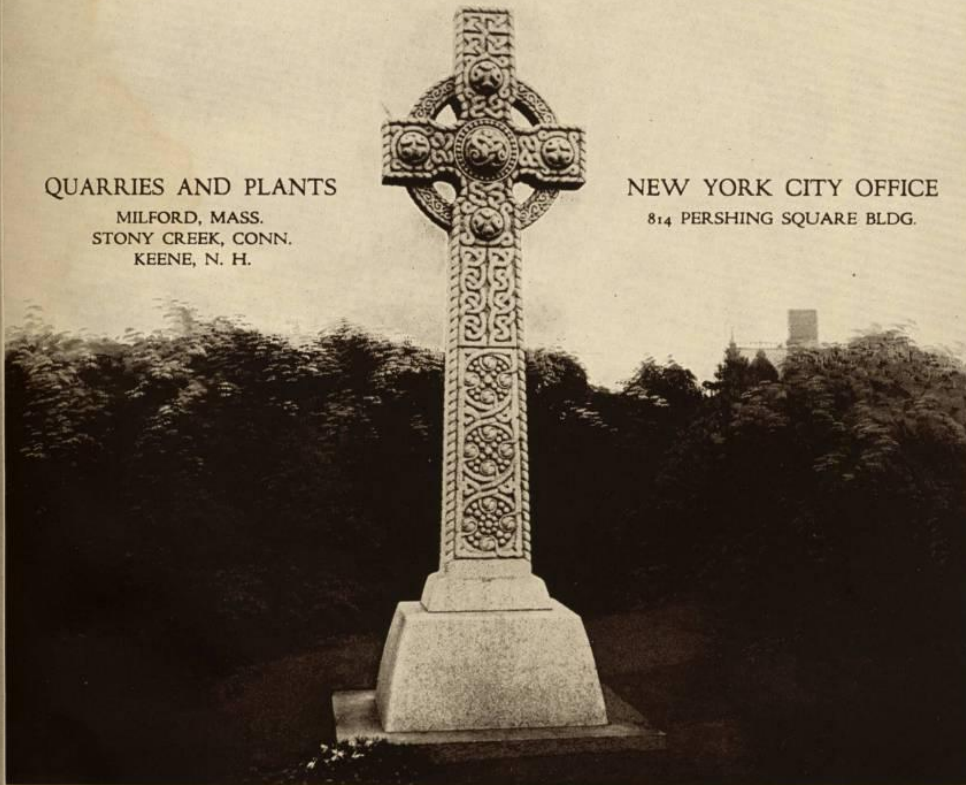
SOME EXAMPLES CUT IN
STONY CREEK, MILFORD PINK
AND
VICTORIA WHITE GRANITES



THE DODDS GRANITE COMPANY
MAIN OFFICE, MILFORD, MASS.

QUARRIES AND PLANTS
MILFORD, MASS.
STONY CREEK, CONN.
KEENE, N. H.

NEW YORK CITY OFFICE
814 PERSHING SQUARE BLDG.



THE DODDS GRANITE COMPANY



THE HUMAN RACE has never conceived an important thought that it has not written down in stone. How precarious is the immortality of the manuscript! How far more solid, enduring, and resisting a book is the edifice! To destroy the written word there is need only of a torch and a Turk. To destroy the constructed word there is need of a social revolution, a terrestrial upheaval. The barbarians swept over the Coliseum; the deluge, perhaps, over the Pyramids.

—VICTOR HUGO.

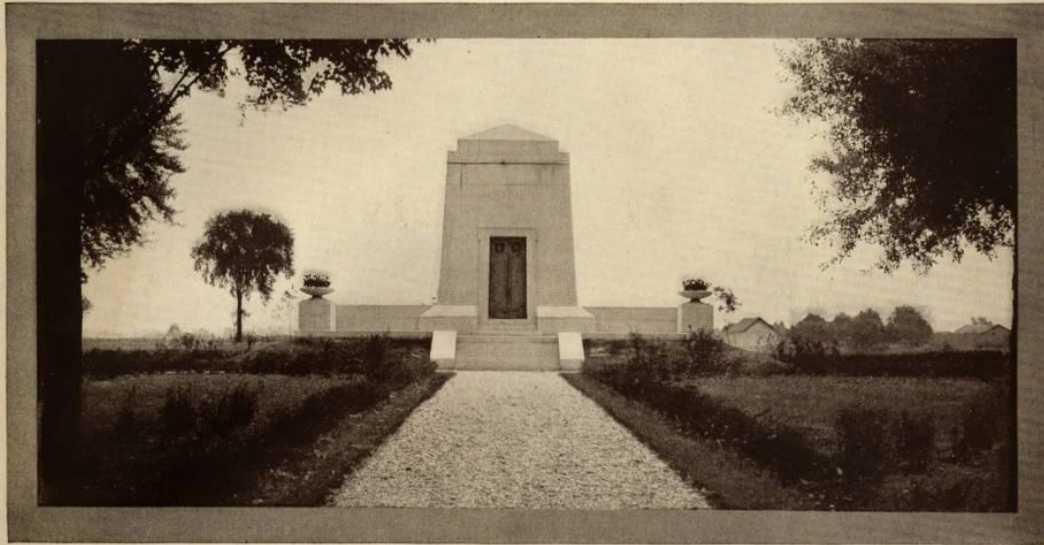
CONSIDER:

When it is something that can be done but once, be it great or small, the best alone is sufficient.

(Note: The initial-piece, above, is the Winged Davis Memorial, at Richmond, Va., by George Julian Zolnay, of Washington, D. C., sculptor. The lower monument is the Lilly Exedra, at Anderson, Indiana, cut in Victoria White granite by The George Dodds & Sons Granite Company.)



TWO MEMORIALS. Above, white marble; below, Victoria White granite. At a short distance no one could say which is the whiter of the two. The granite will endure. We recommend granite for all permanent work out-of-doors.



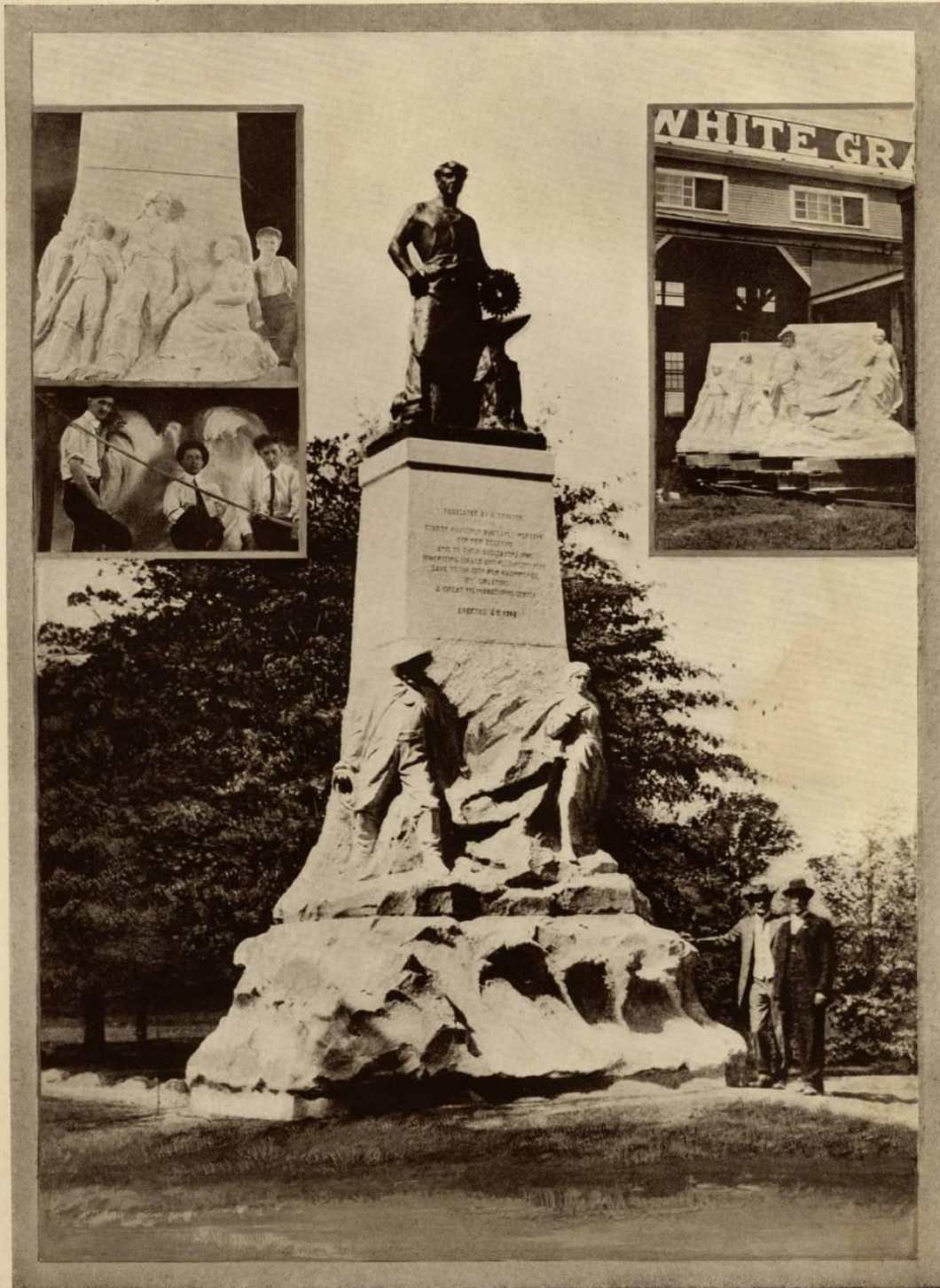
Foreword

MORTUARY Architecture is an art to which all ages and lands have made their contributions. The thought of immortality has, perhaps, its earliest embodiment in the winged emblem carved upon the tombs and monuments of ancient Egypt. The epochs and peoples of the past are largely known and judged by the character of the monuments they have left behind them. The Mausoleum at Halicarnassus, the imposing tomb of Hadrian at Rome, the Taj Mahal, that perfect dream of art which lifts its graceful domes and turrets to the Indian skies, and the countless tributes that loving thought has prompted and cunning hands have fashioned to the memory of the dead, are all commemorative of the taste and skill of those who loved and wrought.

A memorial is a message for future generations. Memorial construction requires the best in a man. It includes his ideals, his hopes, his taste; it expresses his love, his devotion, his gratitude.

When erected for those dear to him it singles out every one of his lofty motives and represents the center of his finest impulses; when expressing his gratitude in building a public Memorial for a mighty service it links him indissolubly to his brothers through his everlasting debt to them.

THE DODDS GRANITE COMPANY



THE INDUSTRIAL MONUMENT, at New Bedford, Mass., George Julian Zolnay, Sculptor, of Washington, D. C. Cut in Victoria White granite surmounted by a bronze figure.
[6]

THE DODDS GRANITE COMPANY



Introduction

IT is the purpose of this booklet to present, in as brief form as possible, the rather remarkable facilities and plan of service in manufacturing the three specialty granites, — Stony Creek, Milford Pink and Victoria White.

The illustrations have been selected to show varied types of Memorials, public and private, that have been manufactured in our plants from these fine materials. Space permits the picturing of but a few of the hundreds of finely finished master Memorials that have been executed to the complete satisfaction of our clients in nearly every part of the country.

In addition to the splendid quarrying and manufacturing facilities, unequalled in the industry, there is maintained a co-operative Designing service. In this department, under the efficient direction of experts, any appropriate idea may be correctly pictured in the design. Individuality will be given expression or originality can be offered.

This is an age of specialization. Trained experts are required in every line of enterprise. There is a concentrated and highly trained effort constantly being put forth in the different departments of the Dodds' organization in an endeavor "always to build better Memorials".

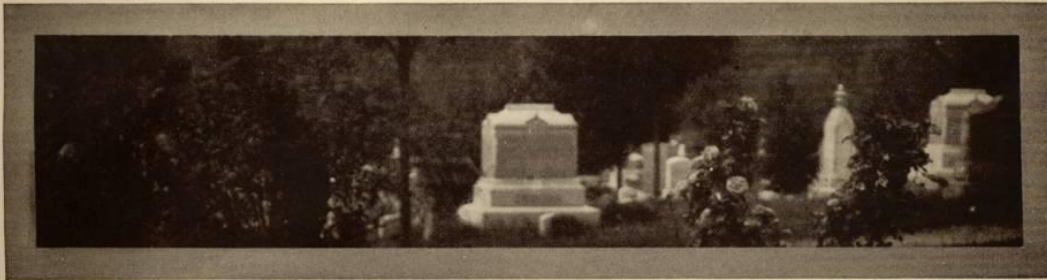


THE DODDS GRANITE COMPANY



THE ADAMS MEMORIAL. Augustus St. Gaudens' Great Memorial Monument, at Rock Creek Cemetery, Washington, D. C. The stone work is entirely in Milford Pink granite.
[8]

THE DODDS GRANITE COMPANY



Milford Pink Granite

THERE are many names of different commodities that strike a responsive chord in the minds of multitudes, whenever mentioned, simply because of their inherent goodness and high quality.

It remained for Milford Pink to make a name for itself in the Granite industry, unequalled in its class. Its name is known alike to Memorial Merchants, Architects, Artists and Sculptors; for it is a fine granite of rare beauty.

Brilliant jet black splotches closely resembling true Porphyry, flecking a rich but modest background of warmest golden pink tone, give a character to this granite that fills and delights the eye; while its hardness, density and non-absorbing qualities insure the durability of its life and beauty, whether polished, hammer-dressed or rustic.

The golden pink of the weathered stone is regarded by the best artists as a thing of surpassing beauty.

Our quarries and plants at Milford, Mass. are producing this granite promptly and efficiently in sizes to the limit of transportation.



THE DODDS GRANITE COMPANY



LAKEVIEW CEMETERY—Cleveland, O. Professor Herman Matzen, Cleveland, Designer

The "White" Memorial presents Stony Creek Granite and Bronze in a beautiful combination. The illustration but faintly shows the unusual veining and mottling in the granite.



WOODLAND CEMETERY—Xenia, O. Length Over All 18'-6"

It can justly be said that the unusual and striking color blending in Stony Creek Granite is a feature unknown in any other granite.



Stony Creek Granite

ON the bleak shore of Long Island Sound, near the village of Stony Creek, in New Haven County, Connecticut, there jut forth massive and rugged outcroppings of an unusual and distinctive granite.

Untiring Time has registered the tides of countless centuries upon these granite giants without obliterating or in any wise impairing the beauty and glory of variegated yet harmonious coloring which adorns their naked heads. In vain have the blinding storms and biting cold of numberless New England winters assailed these ridges of adamant rock. They have remained materially unaltered from age to age.

Today, in city parks, on public squares and in places of the greatest prominence, the products of these quarries, fashioned into fitting forms of classic beauty and elegance, keep endless vigil at the shrine of the Nation's Immortals; while in our cemeteries, everywhere, appear examples of the individual charm that may invest a private memorial, whose delicate warmth of coloring so beautifully betokens the depth and sincerity of the tenderness that prompts each silent tribute to the dead.

"Stony Creek" commends itself as a granite quite impervious to climatic influences, and of surpassing beauty. Its soft shades of pink and green, of brown and grey, so perfectly blended or so strikingly contrasted, patterned in most superb mottling and veining by the mystic hand of Nature, are the wonder and delight of America's greatest artists, whose masterpieces are in this wonderful material.

Our quarries and plants at Stony Creek are developed and adequately equipped to meet promptly and efficiently any requirement in this granite.



THE DODDS GRANITE COMPANY



The Earnshaw design located in Spring Grove, Cincinnati, was copied from the Choragic Monument of Lysicrates. The original was erected by Lysicrates about 334 B. C. on the Street of the Tripods in Athens, and is one of the most beautiful examples of a circular Greek temple. The original is still standing.

The other illustration is of the St. Clair-Van Dyke Memorial in Greenville, Ohio. These are striking examples of the effectiveness of Victoria White in fine sculptured detail.



Victoria White Granite

IN Victoria White granite nature has provided a perfect material for perpetuating memories. It is quarried from the eternal mountains of New Hampshire, the granite State, themselves among the first of the mountains of all the earth to raise their heads above the primeval sea. For thousands and perhaps even for millions of years the granite of these mountains has been exposed to the impotent ravages of the elements. As everlasting as the hills themselves, this granite, used in the making of mausoleums and memorials, stands sentinel over the resting place of thousands.

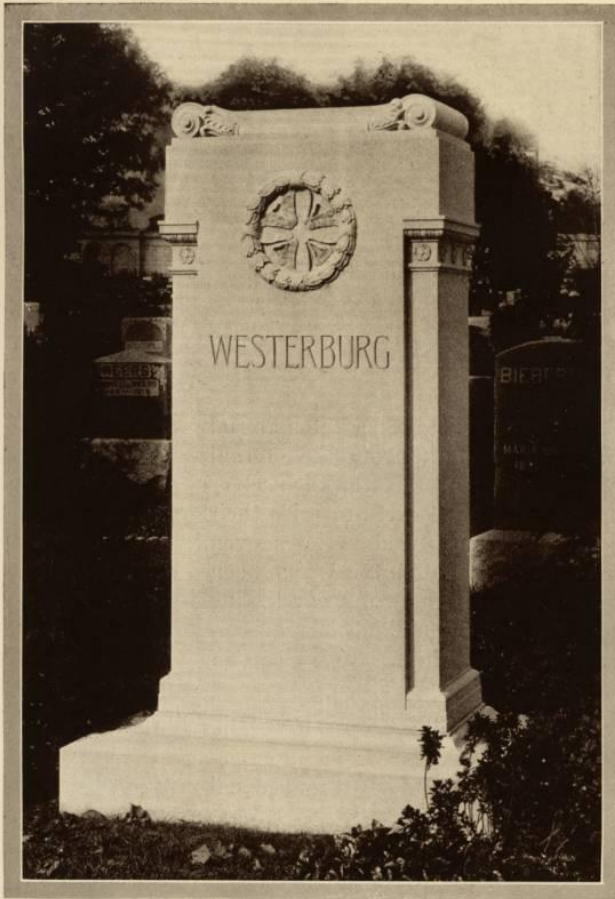
Distinguished for the beauty of its carving, its fine grain, impermeability to moisture, density and freedom from imperfections, and its marble-like whiteness in finish, it is without equal as a memorial stone.

The true effect of the design, the symbolism of decorative treatment, the beauty of mouldings and sculpture; all these are made possible by the use of Victoria White Granite.

Victoria White is a granite that will faithfully portray the human features in sculpture and many leading artists specify it for their most important commissions. When you specify it you are assured a material that has been tested under the most exacting conditions and found the most satisfying.



THE DODDS GRANITE COMPANY



VICTORIA WHITE GRANITE
Erected in "Woodlawn," N. Y.

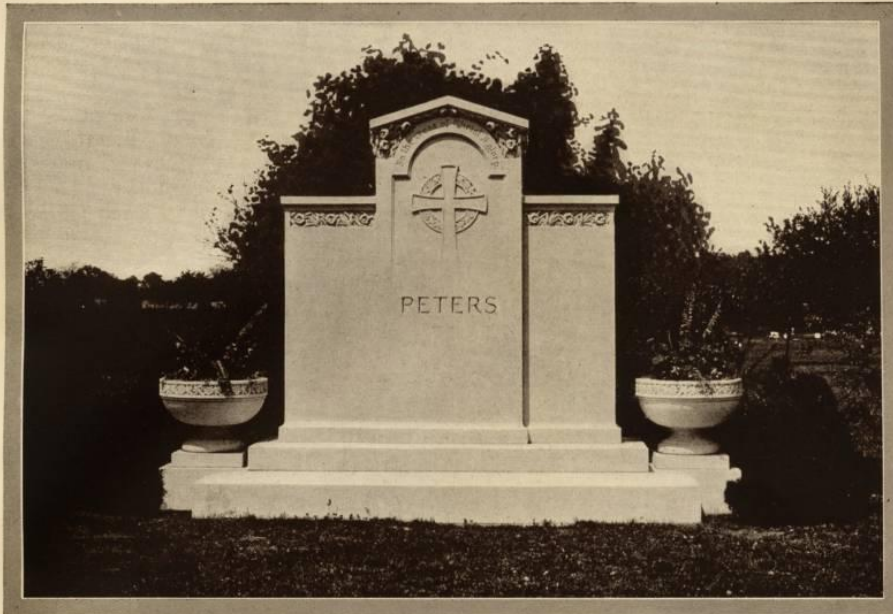
The rendering of the cross in this design gives a substantial but graceful effect. The laurel wreath and inverted torch are appropriate in their symbolism. Milford Pink, in its warmth of tone, beautifully portrays the artist's conception. It will stand as lasting as the very hills from whence it came.

The grace of line and beauty of ornamentation so evident in Grecian architecture is cleverly presented in this stately Memorial. The use of Victoria White granite permitted the perfect execution of the design.



MILFORD PINK GRANITE
Erected in St. Louis, Mo.

THE DODDS GRANITE COMPANY



VICTORIA WHITE GRANITE—Erected in Xenia, Ohio.

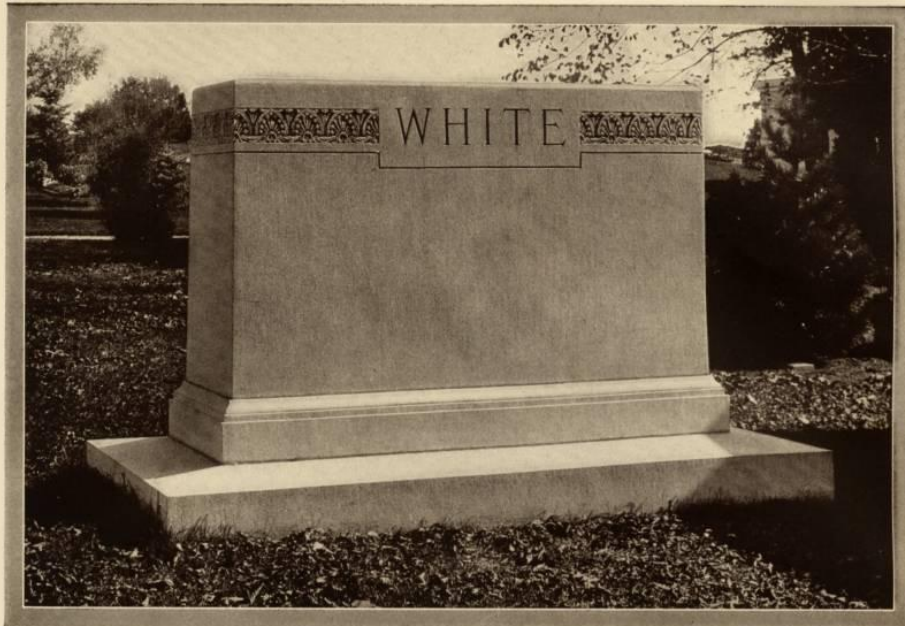
The Peters tribute has been pronounced an outstanding example of modern designing. The central feature would seem to represent the entering portal to the great beyond. The sharp detail in sculptured lily and passion flower bands and the velvet like finish of the hammered surface can be attributed to the use of the statuary granite, Victoria White.



VICTORIA WHITE GRANITE—Erected in "Gate of Heaven," N. Y.

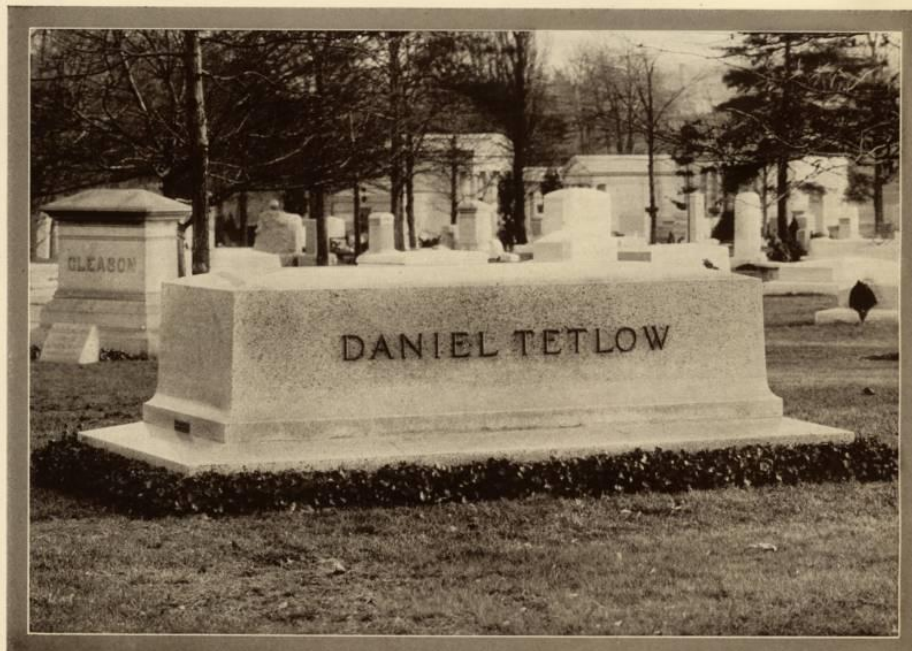
In the Held memorial we find that the classic column feature has been admirably supplemented by the elegantly designed wing seats. Modern designing found an opportunity for expression in this embodiment of the old and the new.

THE DODDS GRANITE COMPANY



VICTORIA WHITE GRANITE—Erected in "Woodlawn," N. Y.

The Stele Crest, so effectively used in the band of ornamentation to individualize the name, indicates the special beauty of Greek ornament. It required the use of the finest of granites properly to execute the detail of the design and Victoria White was selected.



MILFORD PINK GRANITE—Erected in "West Laurel Hill," Philadelphia, Pa.

The horizontal lines of this sarcophagus are most pleasing. The ability to endure and safely protect its sacred trust is clearly manifest. The name is strikingly outstanding in everlasting bronze upon the sheer beauty of Milford Pink.

THE DODDS GRANITE COMPANY



VICTORIA WHITE GRANITE—Erected in Muncie, Ind.

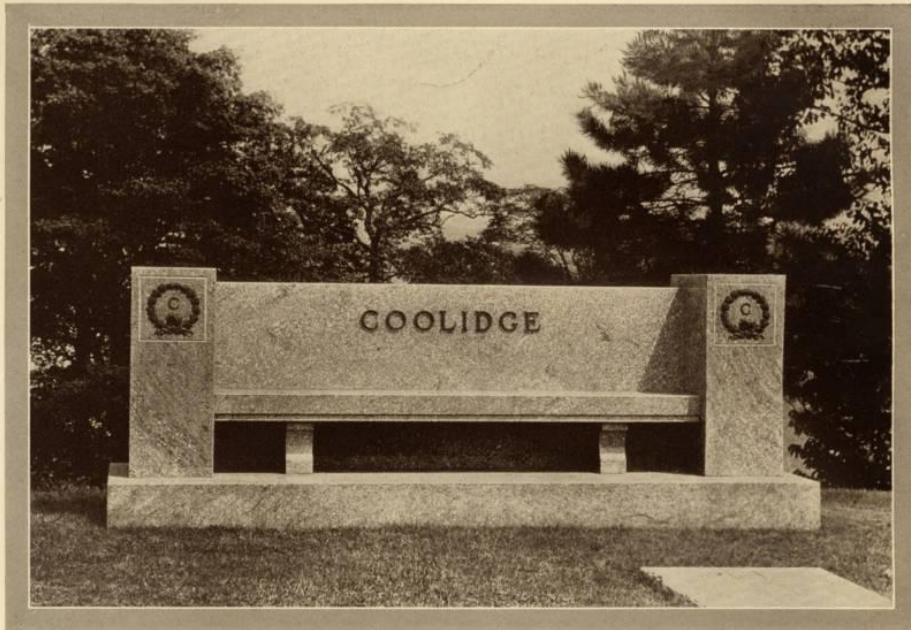
There is an atmosphere of peace and rest surrounding the very presence of this remarkable work of art. The central portion with its symbolical figure and delicately draped ornamentation blends naturally into the monolithic exedra on either side. There is a life-like quality in the statue and an exactness of detail throughout, made possible by the use of that fine grained, even textured granite, Victoria White.



VICTORIA WHITE GRANITE—Erected in "Woodlawn," N. Y.

It has been aptly said, "a thing of beauty is a joy forever". The fine lines and striking beauty in the Mackelvie memorial are at once apparent.

THE DODDS GRANITE COMPANY



STONY CREEK GRANITE. Erected in Johnstown, Pa.

To be able to sit down quietly in the place dedicated to loving memories is to stimulate the better and finer faculties always. This memorial seat is one of unusual proportions. It's very simplicity accentuates its beauty. The material, being Stony Creek with all surfaces highly polished, reflects a wonder of color and rich beauty.



STONY CREEK GRANITE—ALL POLISHED. Erected in Clinton, Iowa.

One of the most outstanding memorial features of recent years is to be seen in the Eastman tribute. Its beautiful mouldings and graceful lines soften its great mass and intensify the natural beauty of the granite. The name and wreaths are in U. S. Standard Bronze.

THE DODDS GRANITE COMPANY



Highly polished surfaces have found much favor in modern memorial expressions. Stony Creek granite with its beauty of veining and coloring, in combination with the warm rich tones of bronze is most effective. This design is beautifully balanced and the bronze judge symbolizes the right to judge all things with equity.



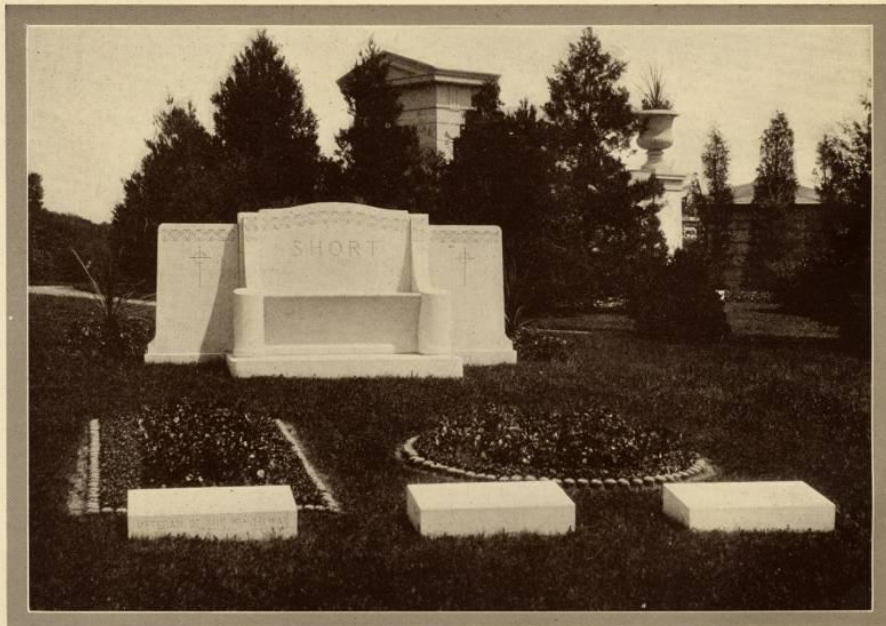
The Grecian Stele was wisely selected as the central theme of this screen memorial. The terminal pilasters give balance to the design and serve as supports for the incense urns. The individuality of Stony Creek only adds to the unique beauty of the design.

THE DODDS GRANITE COMPANY



MILFORD PINK GRANITE—Erected in "West Laurel Hill," Philadelphia, Pa.

The Greek Cross, in its unusual and substantial setting, is a potent feature of ornamentation and symbolism. This group, monument, urn, seat and markers, creates an atmosphere of peace and rest on this gently sloping plot.



VICTORIA WHITE GRANITE—Erected in Woodlawn," N. Y.

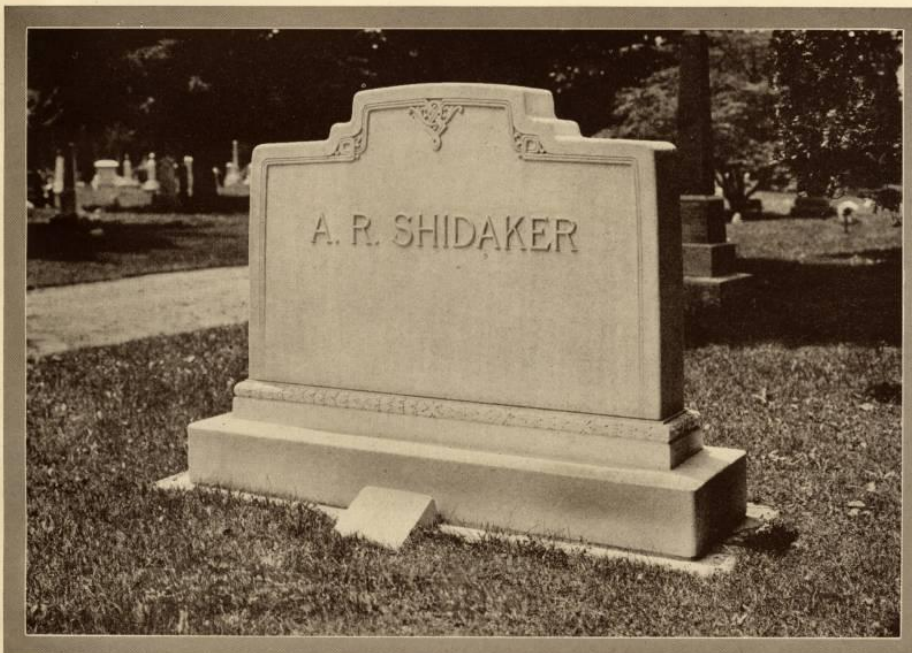
The restful lines of the Short exedra, supported by beautifully balanced wings is further individualized by the skillfully executed border. Victoria White granite could hardly be equalled for such detail.

THE DODDS GRANITE COMPANY



VICTORIA WHITE GRANITE—Erected in Orange, N. J.

The conventionalized butterfly design bears the symbolism of resurrection. The sculptured carving and lettering is emphasized by the plainness of this horizontal tablet.



VICTORIA WHITE GRANITE—Erected near Dayton, O.

To be able to express individuality in ornamentation and contour is a fine accomplishment in the artist-designer. The use of the correct material will give expression to his ideas.

THE DODDS GRANITE COMPANY



VICTORIA WHITE GRANITE—Erected in Cincinnati, O.

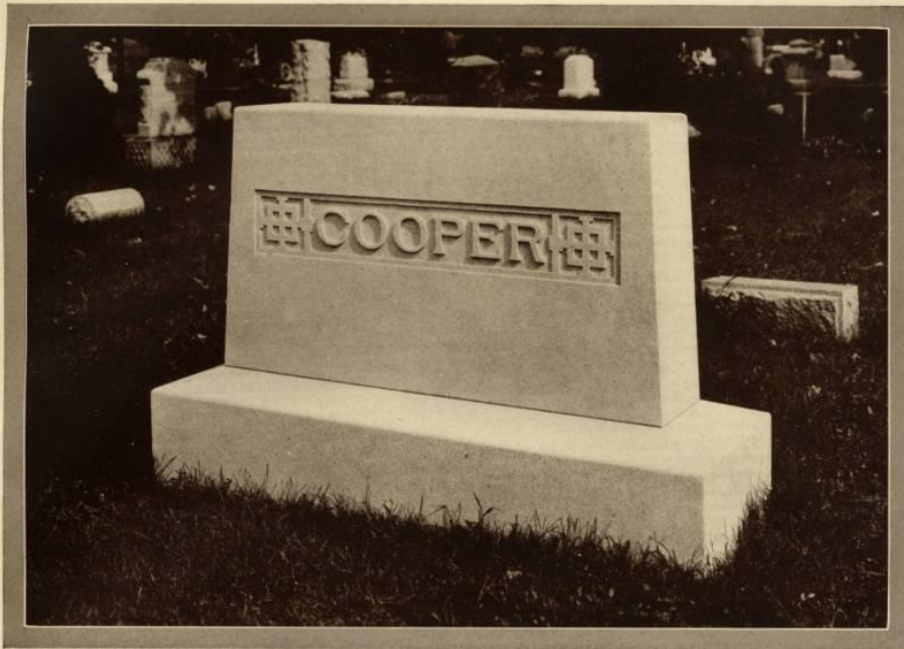
The fine mouldings in the base of the Freiberg tribute literally blend into the graceful contour of the entire design until an unusual effect of solidity and grace is attained.



VICTORIA WHITE GRANITE—Erected in "Woodlawn," N. Y.

Rest,—quiet, peaceful rest. How beautiful the thought and how well exemplified in this seat memorial.

THE DODDS GRANITE COMPANY



VICTORIA WHITE GRANITE—Woodland, Xenia, O.

The plain, horizontal lines of the Cooper monument, are emphasized by the panel treatment, which also forms a pleasing setting for the name.



VICTORIA WHITE GRANITE—Erected in "Woodlawn," N. Y.

The Seat serves the double purpose of usefulness and artistic decoration upon Cemetery lot or lawn.

THE DODDS GRANITE COMPANY



MILFORD PINK GRANITE—Erected in "West Laurel Hill," Philadelphia, Pa.

The granite vase is increasing in popularity because of its possibilities for originality and its utility as a permanent receptacle for floral tributes or dwarf evergreen planting.



VICTORIA WHITE GRANITE—Erected in "Woodlawn," N. Y.

The Vase, when made in generous proportions, may be used as the central theme on a cemetery plot or in smaller sizes to supplement the family memorial.

The Monumental Urn

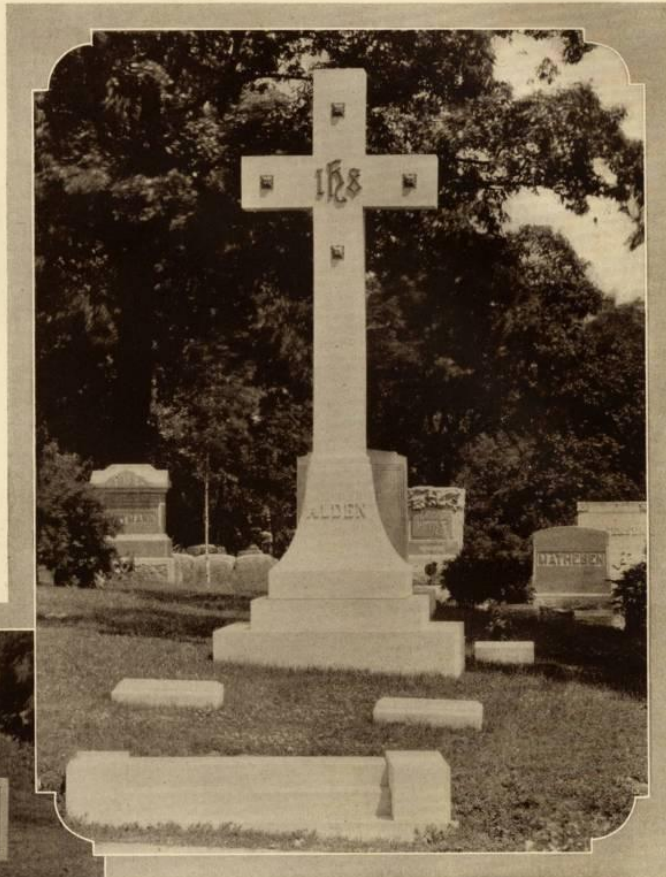
To furnish Memorials, different and at the same time expressive of deep sentiment is the purpose of the Monumental Urn illustrated upon these pages. The classic lines of ancient architecture here find expression.

Such a Memorial creates a veritable atmosphere of love upon the Cemetery plot when executed from the everlasting Stony Creek Granite, with its beautiful warmth of tone and individual veining and mottling.



The Cross

In its symbolism and deep significance the Cross, perhaps, surpasses all other types of private memorial expression.



VICTORIA WHITE GRANITE—Clinton, Iowa



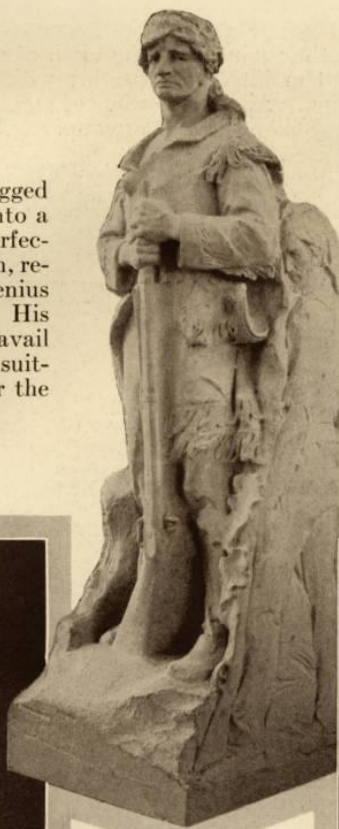
VICTORIA WHITE GRANITE

As an individual tribute the diminutive cross conveys those wonderful thoughts of supreme love and sacrifice.

The Statue

The transition of a rugged piece of flint-like granite into a life-like statue, in all its perfection of detail and animation, requires the incomparable genius and skill of the sculptor. His trained mind and hands will avail nothing, however, unless a suitable material is selected for the

proper portrayal of his concept. Granite is accepted as Nature's only everlasting material for this purpose and among the comparatively few granites that are suited, by their very nature, for the detail of sculpture, Victoria White ranks without a peer.



GEORGE ROGERS CLARK
MEMORIAL
Clark County, Ohio
Charles Keck, Sculptor
New York City
Entire Memorial in
Victoria White Granite



A TYPICAL DOUGHBOY
in Victoria White Granite



FAITH, HOPE AND CHARITY
Model by
Evelyn B. Longman
Executed by F. Recchia in
Victoria White Granite

The Mausoleum

THE present day Mausoleum is the evolution of the tomb of antiquity, bringing to us the unmatched elegance of ancient architecture, together with modern ideas and development of construction and design. All of the orders of architecture may find expression in the modern private Mausoleum and likewise there are opportunities for original conceptions in design and effect.

The private Mausoleum is rapidly gaining in favor in the United States,—as indeed it should do. In nearly every modern Cemetery there are examples of rare art and beauty serving the twofold purpose of utility and commemoration.



L. C. SMITH MAUSOLEUM, SYRACUSE, N. Y.

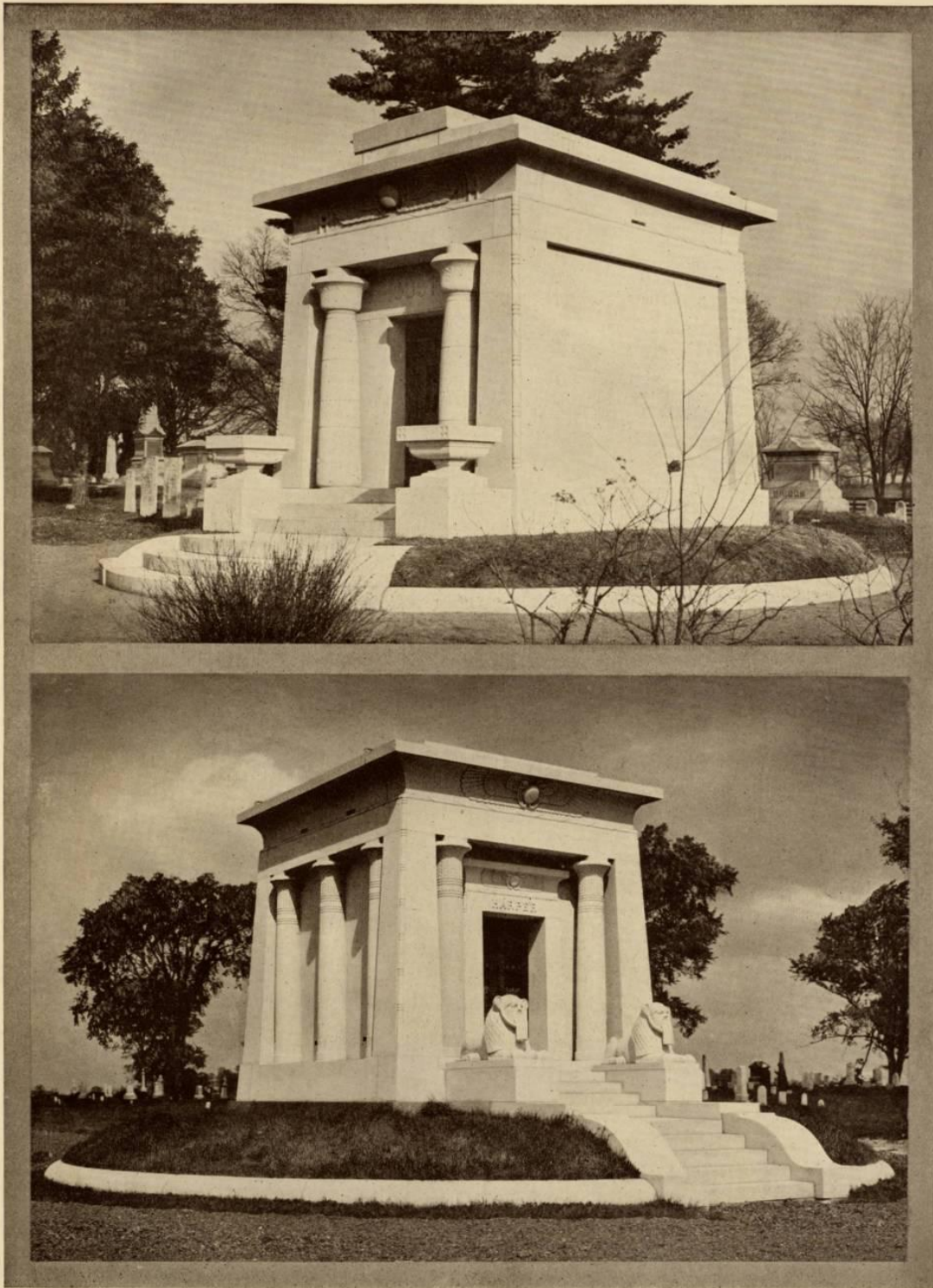
VICTORIA WHITE GRANITE

There is but one material suitable for the outside structure of the Mausoleum. Granite alone will successfully withstand the rigor of climatic changes. It alone stands unaffected by the elements, retaining the original beauty of detail and design.

The Mausoleum is past the day of experiment with those who have carefully and painstakingly studied its construction. They realize the folly of attempting to use materials that will not endure through the ages. The matchless granites from the Dodds quarries are accepted as Nature's perfect materials for fine Mausoleum construction.

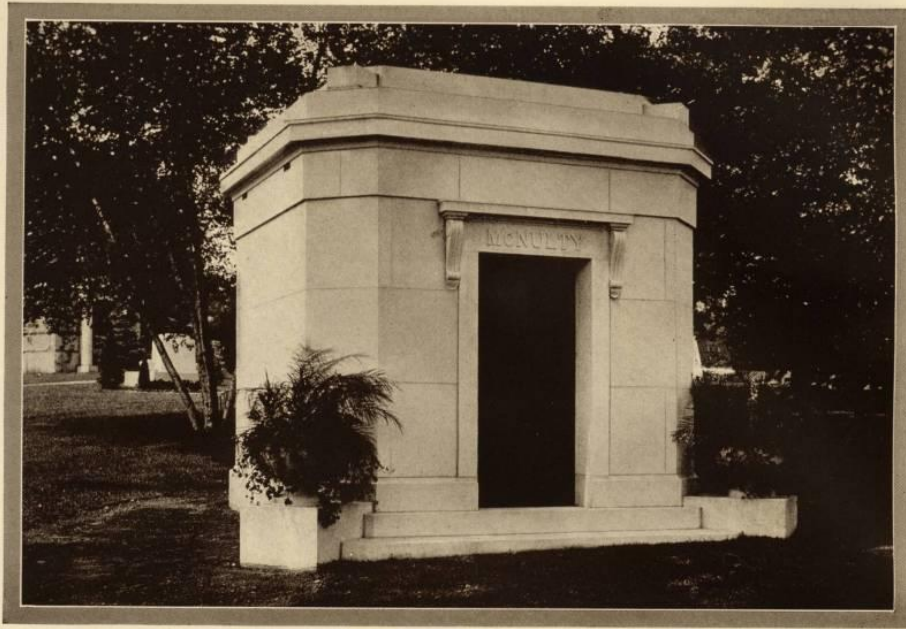
The illustrations on succeeding pages indicate a wide range in design. These are but a few, selected from those furnished from the Dodds quarries and plants.

THE DODDS GRANITE COMPANY



NOTE: The illustrations are of two examples of Egyptian architecture, the Houston Mausoleum, at South Charleston, Ohio, and the Harper Mausoleum at Cedarville, Ohio, both cut in Victoria White granite.

THE DODDS GRANITE COMPANY



VICTORIA WHITE GRANITE—Erected in "Woodlawn," N. Y.

The octagonal proportions are most pleasing as presented in this finely finished building. [Just such work is typical of that continuously being produced in the Dodds plants.



MILFORD PINK GRANITE—Erected in "Woodlawn," N. Y.

The graceful Grecian Ionic columns, supporting an unique arch, find a natural setting at the entrance of this otherwise plain structure.

THE DODDS GRANITE COMPANY



MILFORD PINK GRANITE—Erected in "Kensico," N. Y.

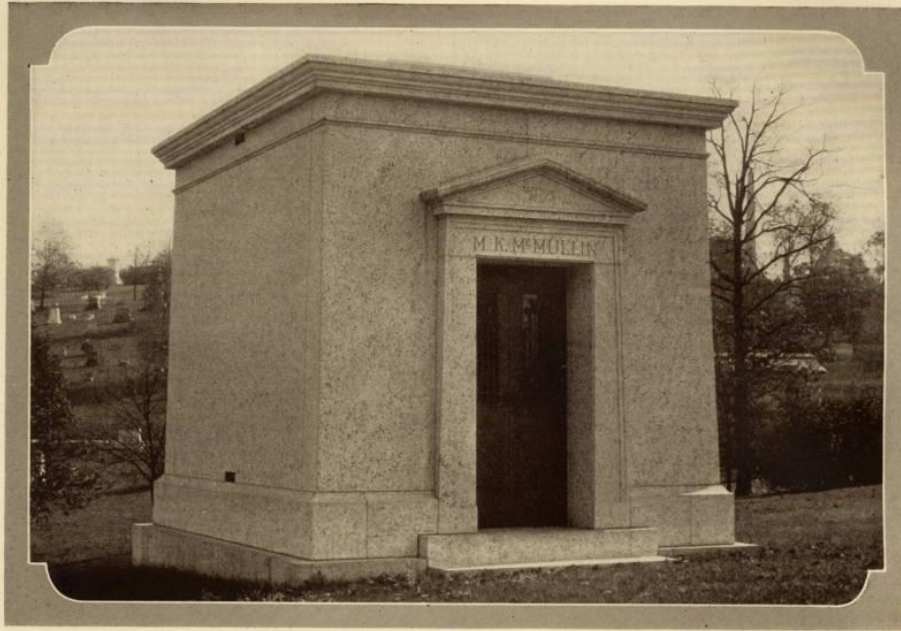
Permanency being the basic reason for mausoleums, the massiveness of the Egyptian architecture is particularly adapted to that enduring construction.



VICTORIA WHITE GRANITE—Erected in "Sleepy Hollow," Tarrytown, N. Y.

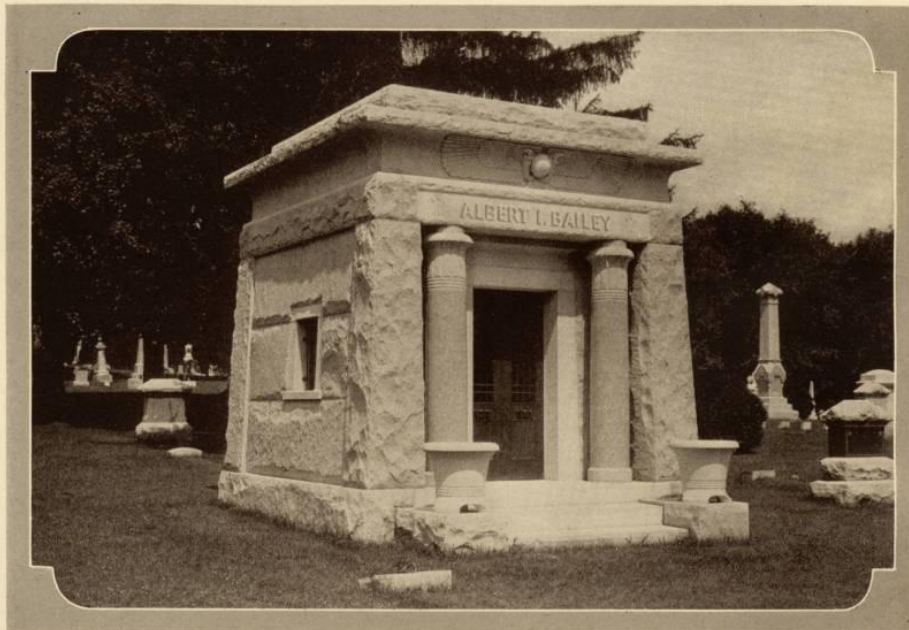
The effectiveness of the entire setting on this plot in beautiful "Sleepy Hollow" cemetery indicates the splendid result of a well directed plan. The clear beauty of Victoria White granite may be imagined from the illustration.

THE DODDS GRANITE COMPANY



MILFORD PINK GRANITE

In the McMullin design we find an unusual construction in the use of large individual slabs to form the four walls. Truly a beautiful structure, well balanced and proportioned.



VICTORIA WHITE GRANITE—Sugar Grove Cemetery, Wilmington, O.

In the Bailey Memorial we see unusual character of design adapted to the inexpensive rustic type.

THE DODDS GRANITE COMPANY



THE BENEDUM MAUSOLEUM—Stony Creek Granite, Homewood Cemetery, Pittsburgh, Pa.

A solemn grandeur surrounds the stately beauty of the Benedum mausoleum. Stony Creek granite may be all the more admired in so splendid an edifice.



VICTORIA WHITE GRANITE—Erected in "Woodlawn," N. Y.

The Pickford memorial illustrates the possibilities in a small two-crypt structure that may be erected at a very reasonable cost.

THE DODDS GRANITE COMPANY



ALL POLISHED STONY CREEK GRANITE—Warren, Pa.

It would be difficult indeed to imagine a more striking Mausoleum tribute than the Hazeltine. A world of beauty is reflected in the mirror-like surfaces of the polished Stony Creek granite.



VICTORIA WHITE GRANITE—Spring Grove Cemetery, Cincinnati

The true beauty of architectural refinement finds expression in the classic beauty of the Carew Mausoleum.

THE DODDS GRANITE COMPANY



VICTORIA WHITE GRANITE—Erected in Battle Creek, Mich.

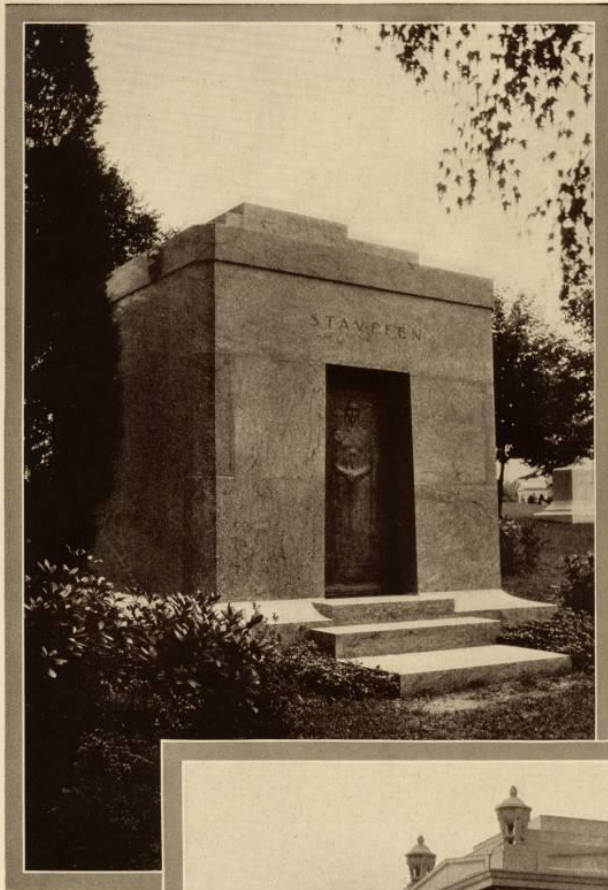
Critics have pronounced the C. W. Post structure second to none in beauty of granite surfaces and skill of execution.



STONY CREEK GRANITE—Erected in "Woodlawn," N. Y.

There is a "Monumental" atmosphere about the classic lines of the Stegman Mausoleum. Its art is enhanced by the contrasting surfaces of polished and hammered Stony Creek granite.

THE DODDS GRANITE COMPANY



The wonderful veining so evident in the polished surfaces of Stony Creek granite converts the plainness of the Stauffen design into a tribute of richest splendor.

STONY CREEK GRANITE
Erected in "Woodlawn," N. Y.



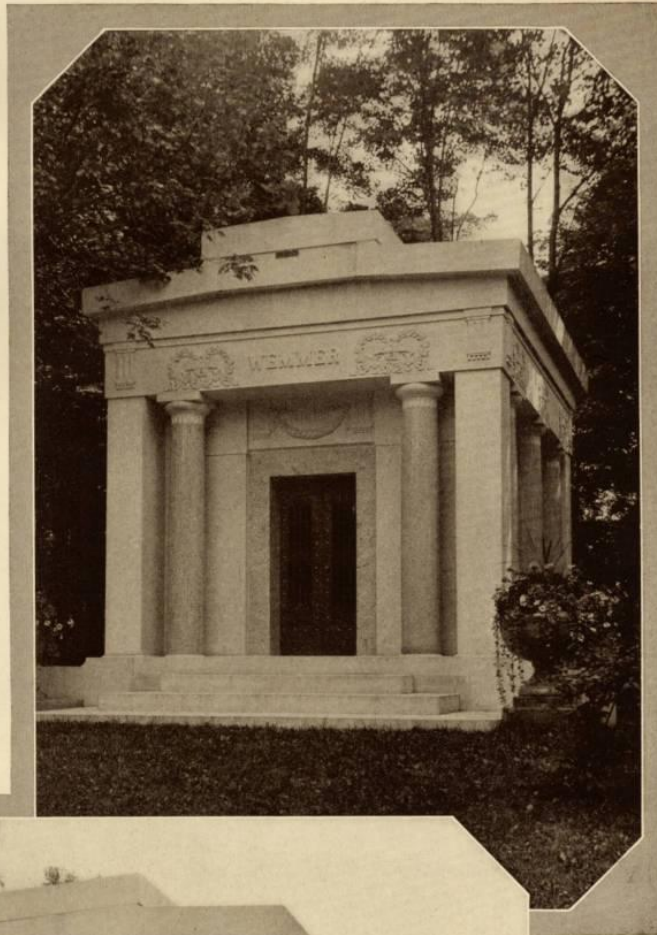
STONY CREEK GRANITE—Erected in "Woodlawn," N. Y.

There are many opportunities for unique architectural expression in the modern Mausoleum. The Rathbone-Bacon is picturesque in the effective presentation of the contrasting surfaces of Stony Creek granite.

THE DODDS GRANITE COMPANY

What a sense of security and endurance is conveyed by the very massiveness of the Wemmer mausoleum. The Dodds quarries and plants produce such structures promptly and efficiently.

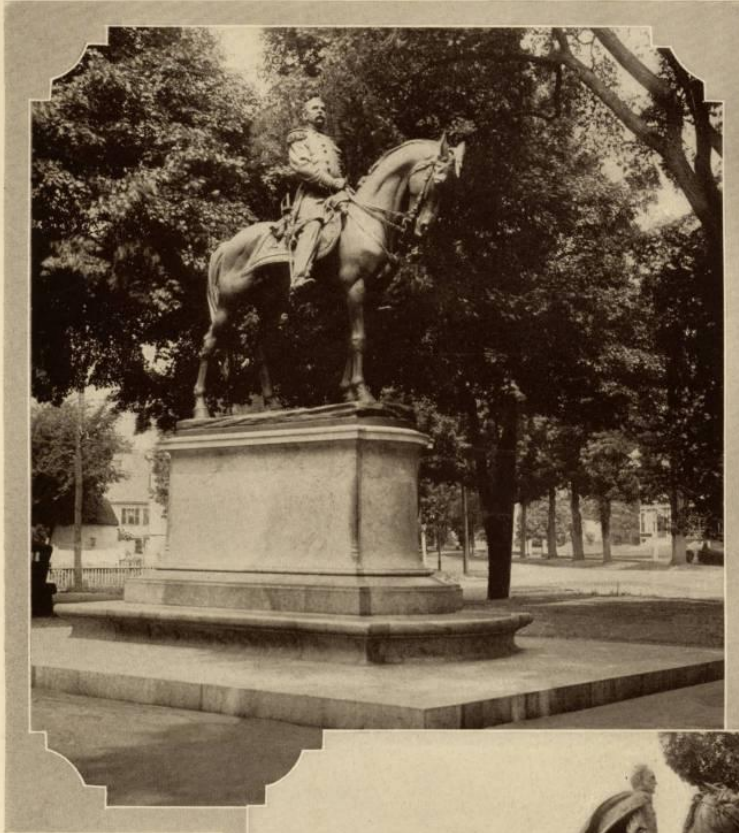
VICTORIA WHITE GRANITE—
Woodlawn Cemetery, Lima, O.
COLUMNS MILFORD PINK
GRANITE



VICTORIA WHITE GRANITE—Woodlawn Cemetery, Lima, O.

This well proportioned building demonstrates conclusively the essentials of mausoleum construction—strength and dignity.

The Public Memorial



The Equestrian Memorial is symbolical of "action" and "service to country". In our great parks and public places there are many examples of remarkable bronze statues and groups mounted upon pedestals of Stony Creek and Milford Pink Granites. The General Draper tribute, in Milford, Mass. is a beautiful example. The pedestal is of Stony Creek granite.

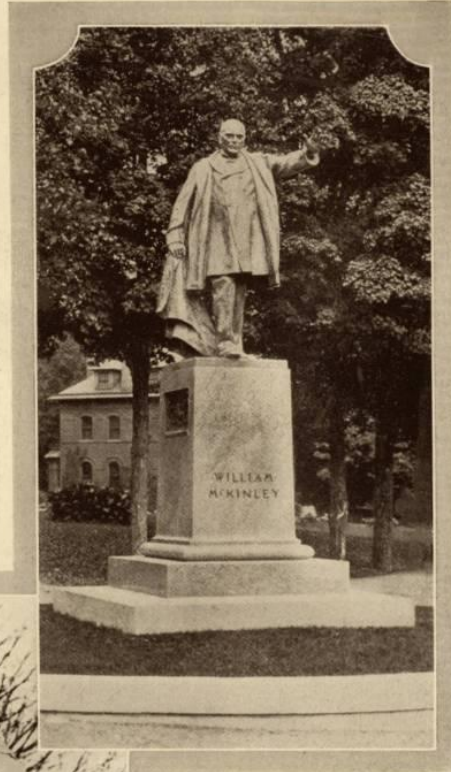
The General Wm. T. Sherman Memorial in Central Park, New York City has been admired by countless thousands of visitors in that great Park. The striking effect of the bronze figure is enhanced by the beauty of the Stony Creek granite pedestal.



The Public Memorial

WILLIAM McKINLEY MEMORIAL Adams, Mass.

There have been many beautiful and appropriate tributes erected to our beloved President, the late William McKinley. The one at Adams, Mass., typifies his quiet dignity and splendid statesmanship. The pedestal is of Stony Creek Granite.



THE PEARY MEMORIAL Arlington Cemetery Washington, D. C.

Fashioned from a design of his own suggestion this unique memorial, a large spheroid, in proportion and position like the earth, was unveiled on April 6th, 1922 as a commemorative tribute to the late Rear Admiral Robert E. Peary, discoverer of the North Pole. Victoria White granite was selected to give expression to this splendid design.



THE DODDS GRANITE COMPANY

The Public Memorial

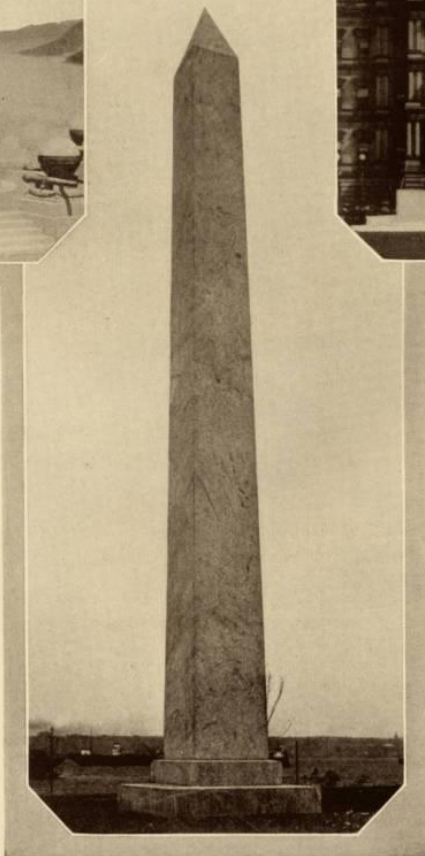


The commemorative monument, Sault Ste. Marie, Mich. Erected on the fortieth anniversary of opening of St. Mary's Falls Canal. It is perhaps the largest monolith in America. Stony Creek granite throughout.



THE BATTLE MONUMENT West Point

The battle monument at West Point is perhaps without a peer as a nationally known war memorial. The shaft is of Stony Creek granite, 41 feet 6 inches high and 6 feet in diameter. The rest of the granite is Milford Pink.

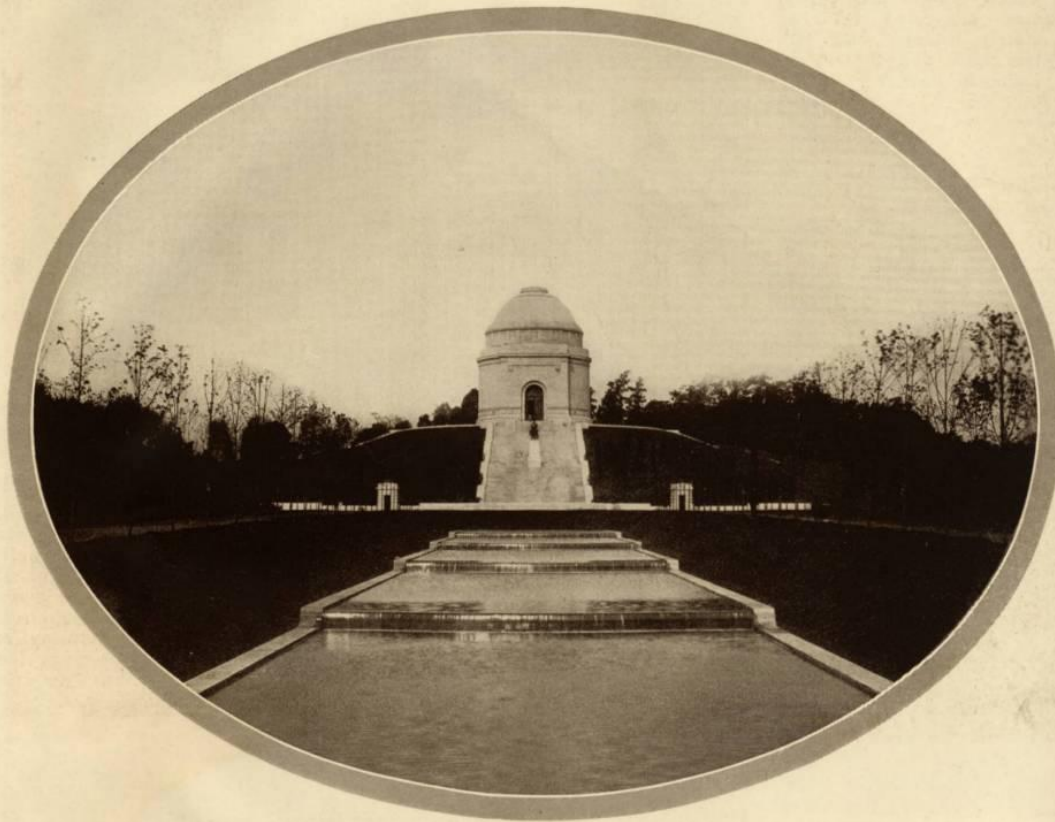


FIRST DIVISION MEMORIAL

Washington, D. C.
Cass Gilbert Architect
Milford Pink Granite

One of the most famous national shrines to our country's fallen heroes is the First Division tribute, unveiled in October, 1924, by President Coolidge. It towers 80 feet high, the central shaft alone being 35 feet high and 5 feet 6 inches in diameter.

The Public Memorial



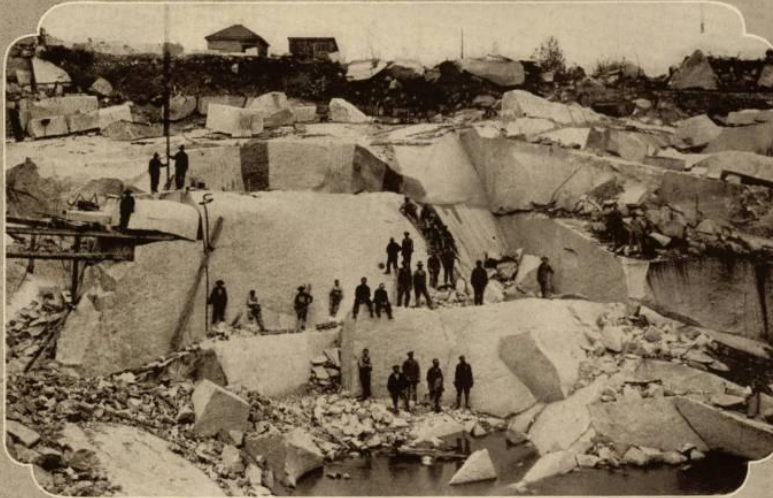
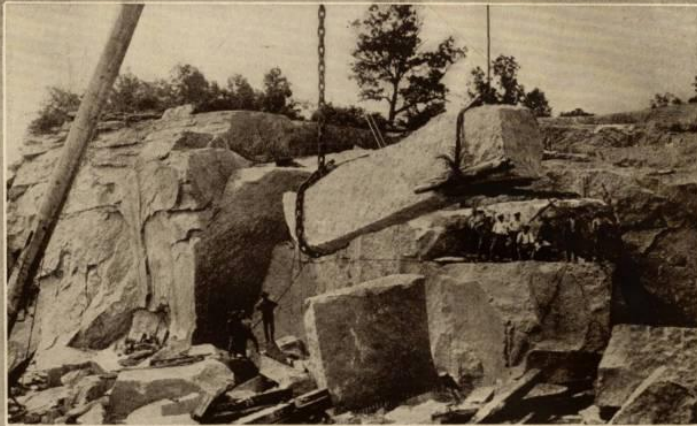
The McKinley Memorial and Tomb at Canton, Ohio is nationally known as a tribute of love to our late beloved and martyred President.

As a national shrine to his memory and the repository of the bodies of President and Mrs. McKinley it has been visited by countless thousands.

The entire structure, platforms, steps and approach are in Milford Pink granite.

THE DODDS GRANITE COMPANY

Hoisting a piece of Stony Creek granite that was soon converted into a stately column shaft 25 feet high and 3 feet 6 inches in diameter.



Notice the size of the ledges pictured in this view of a small portion of a Milford Pink quarry. It is from such ledges as these that huge pieces may soon be secured and fashioned into giant monoliths, shafts or columns. The securing of large blocks for Mausoleum roof stones, platforms or panels presents but little handicap in these quarries.

Splitting a mammoth block of Stony Creek granite, 48 feet long, 14 feet wide, and 7 feet thick. Total weight three hundred ninety five tons.



THE DODDS GRANITE COMPANY



Hoisting a giant Mausoleum roof stone from its agelong resting place in one of our Milford Pink quarries. The ledges in these quarries produce perfect patterns to the limits of transportation facilities.

A general view of a corner in one of our Victoria White quarries. These produce mammoth blocks of this beautiful, clear light grey granite. These are transformed by the genius and skill of human hands into everlasting memorial tributes, in sculptured, hammered and carved work.



This view in one of our Stony Creek quarries gives only a faint idea of the size of the ledges.

Memorial Art in Bronze

BRONZE AND THE HUMAN RACE

BRONZE has played an important part in the advancement of the human race. Its introduction lifted our ancestors out of the crudities of the Stone Age and rendered possible a long stride toward civilization.

THE ANTIQUITY OF BRONZE

The manufacture of bronze is of great antiquity, having reached a high degree of refinement 800 years before the Christian Era. Before iron and steel came into general use, the workers in bronze had attained such skill that few modern craftsmen have equalled and fewer still have surpassed them either in artistry of concept or in thoroughness of workmanship.

THE USES OF BRONZE

The ancients used bronze for tools and weapons, on account of its great hardness, while its beauty and durability suggested it as a most suitable material for the images of their gods and heroes; and, although iron and steel have long since superseded it for the first two purposes, the employment of bronze for statuary, medals, tablets and a vast variety of ornamentation, has steadily increased through the ages, greatly enriching the realm of art and contributing in no small measure to the development of man's esthetic sense.

U. S. STANDARD BRONZE

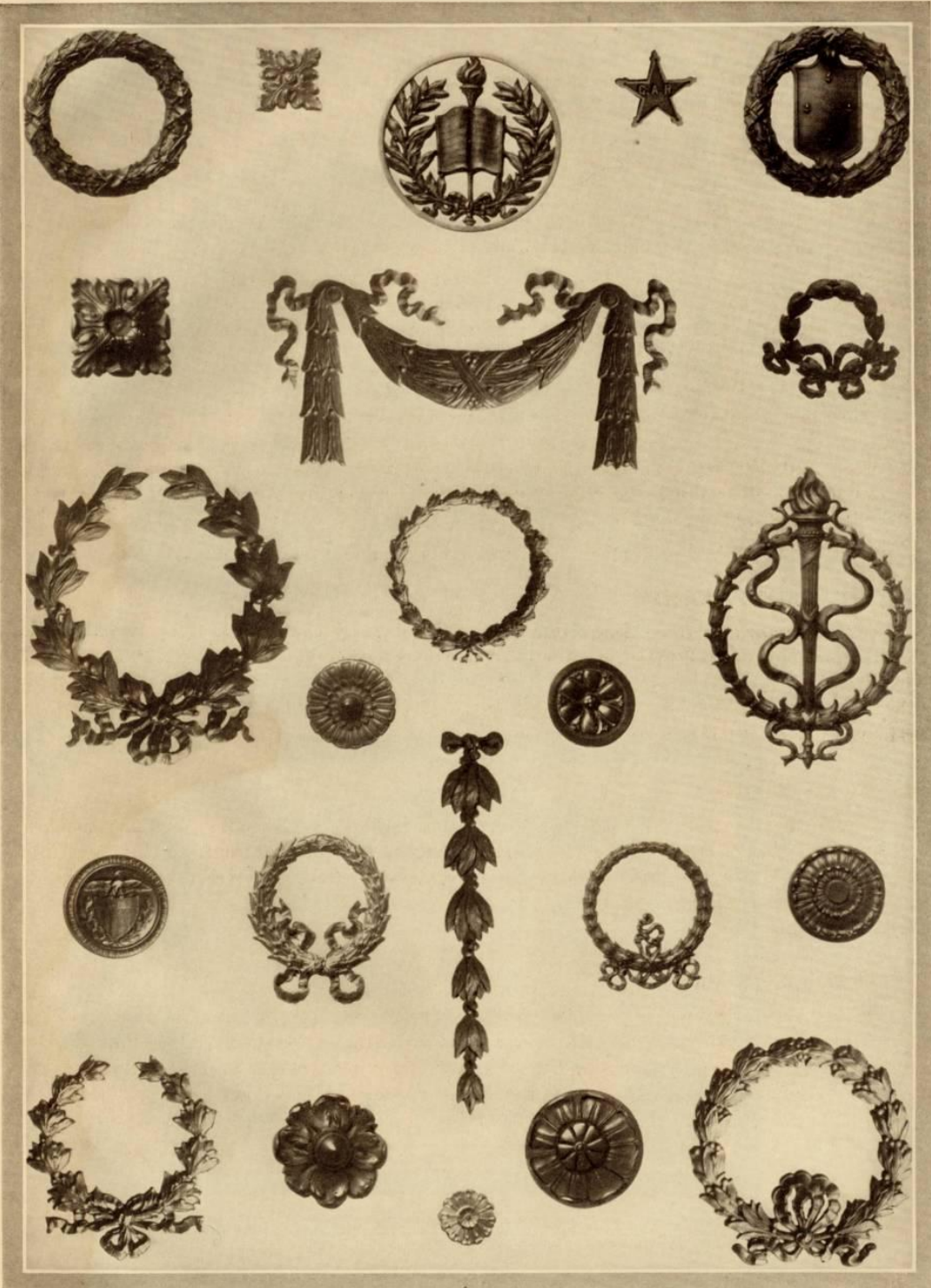
For statuary and other works of art which are to be and remain exposed to the weather, bronze is particularly well fitted, being hard, tough and little affected by atmospheric influence. U. S. Standard bronze metal is highly regarded by eminent sculptors, for its beauty and durability; and it is this excellent formula which we have adopted for the art bronze illustrated herein and for all of our service in that metal.

"SISTER OF STONE"

Bronze has been styled "Sister of Stone," and nowhere is the felicity of this appellation more apparent than in cases of the association of bronze with the harmonizing tints of Milford Pink and Stony Creek granites. Indeed, no more pleasing effects could well be desired by the most exquisite taste than are produced in the combination of U. S. Standard bronze with these peerless granites.

OUR SERVICE IN BRONZE

Our service in Bronze is very complete and the illustrations on the next page show only a part of the attractive ornaments we furnish for use with Stony Creek and Milford Pink granites. With years of experience in attaching bronze lettering and ornamentation to our granites, by a method fully guaranteed, our clients are assured of its permanency and everlasting beauty.



To Summarize

A FEW FACTS

After looking through the pages of this booklet the reader will unquestionably have gained a very good idea of our qualifications in the field of Memorial Art. May we also briefly summarize a few facts pertaining to our unusual facilities?

THE GRANITES AND QUARRIES

In the first pages of this brochure the distinctive characteristics of our granites are set forth and the illustrations show actual examples from these materials. The giant derricks and modern machinery, together with privately owned railroad equipment enable us to quarry and handle the large blocks of granite to the limit of transportation facilities.

THE MANUFACTURING PLANTS

At Milford, Mass., Stony Creek, Conn., and Keene, N. H. are located plants that comprise the largest manufacturing facilities in the entire industry. These are completely equipped with electric cranes, surfacing and polishing machines, huge turning and polishing lathes, giant saws, carborundum machines and, in fact, every known stone-working device. These plants, manned by skilled craftsmen, are continually producing master Memorials for our wide clientele.

CO-OPERATIVE DESIGNING

Realizing the demand for originality in design and accuracy in architectural detail we have developed a designing and modeling department to meet every requirement. Experienced architects and artist designers enable us to prepare designs and plans that will please the most exacting and discriminating tastes. This service is available upon request.

OUR GUARANTY BOND

The remarkable qualities of our granites, proven by chemical analysis and the ability to withstand nature's forces, together with the efficient operation of our plants, all planned by a management with years of widest experience permit us to furnish a Guaranty Bond with our Memorial work. Insist on this Bond when your Memorial is delivered.



An illustration of the Guaranty Bond furnished with Memorials executed by The Dodds Granite Company, in either of the three granites, STONY CREEK, MILFORD PINK, or VICTORIA WHITE. This is your positive assurance of obtaining the genuine material and of the highest standard of finish and workmanship.

In Conclusion

(Regardless of the manner in which this booklet may have come into your possession we trust it has been a welcome visitor and that the information contained herein has been instructive as well as interesting.) To obtain the real benefits of our service you will only need to fill in the enclosed coupon and mail it to our New York office. This action will not obligate you, but it will result in your being ably assisted in solving your Memorial problem.

THE DODDS GRANITE COMPANY

MAIN OFFICE
MILFORD, MASS.

NEW YORK CITY OFFICE
814 PERSHING SQUARE BLDG.

QUARRIES AND PLANTS
MILFORD, MASS.
STONY CREEK, CONN.
KEENE, N. H.

THE DODDS GRANITE COMPANY, 814 Pershing Square Building, New York City.

GENTLEMEN: After looking through the pages of your booklet I am interested in having additional information pertaining to the item checked below.

Mausoleum <input type="checkbox"/>	Sarcophagus <input type="checkbox"/>	Obelisk or Shaft <input type="checkbox"/>	Ledger <input type="checkbox"/>	Original Sketch <input type="checkbox"/>
Monument <input type="checkbox"/>	Seat or Exedra <input type="checkbox"/>	Cross <input type="checkbox"/>	Tablet <input type="checkbox"/>	Soldier's Memorial <input type="checkbox"/>

I am particularly impressed with the illustration of the.....Memorial on page.....

and in your.....granite. This Memorial is to be erected in.....

Cemetery, near.....upon a plot, size.....feet by.....feet. My investment will not exceed.....Dollars.

Signed.....

Street and No.....

City.....State.....

*The Monument means a world of Memories, a world of Deeds,
a world of Tears and a world of Glory.*

—Garfield.