

# THE MONUMENTAL NEWS

AN ILLUSTRATED MONTHLY MONUMENTAL  
ART JOURNAL.

R. J. HAIGHT, EDITOR AND PUBLISHER.

SUBSCRIPTION:  
REGULAR EDITION in United States and Canada \$1.00 a year; Foreign, \$1.50  
INTERNATIONAL EDITION, \$2.50; Foreign, \$3.00.

Address all Communications and Remittances to

THE MONUMENTAL NEWS,  
334 DEARBORN ST., : : CHICAGO.

Entered at the Chicago P. O. as Second-Class Matter.

VOL. 7. CHICAGO, OCTOBER., 1895. NO. 10.

## ◆ CONTENTS. ◆

Editorial—Financial—Ninth Annual Convention of A. A. C. S.—Chickamauga National Military Park—Interest in Monumental Art—Statuary in Parks.....	609
Granite and Marble Production for 1894.....	610
*The New Massachusetts State House.....	611
*The Chickamauga and Chattanooga National Military Park.....	613
State and its Uses.....	615
*Statue of William Tell.....	616
Foreign Notes.....	617
*Sculpture.....	618
*Monumental Notes.....	619
Our Illustrations—Proposed Monuments.....	620
*The Excursion to the Quarries—Michigan Dealer's Excursion to the Granite and Marble Quarries.....	621
*An Attractive Monument.....	624
*Correspondence—Agents—A Trade experience South—Foundations.....	629
Trade Notes.....	632
Barre, Quincy, Concord, Baltimore, Milford and New London Letters.....	634-641
Trade Among Advertisers.....	648
Quarry Notes.....	650
Trade Changes, etc.....	654

\*Illustrated

IF the opinion of the bankers may be accepted as to the financial outlook there is to be a marked improvement in collections during the present month. Between the close margins on work and the slowness in collections the monument industry has experienced a discouraging season, but if the foregoing prediction is verified it will relieve a strain which in many places is becoming serious, and will serve to brighten the otherwise promising outlook for a good fall and winter trade.

THE Ninth Annual Convention of the Association of American Cemetery Superintendents was held at Richmond, Va., September 18, 19 and 20. The attendance from different parts

of the country was very satisfactory, considering the comparative remoteness of Richmond to most of the members attending, and the work of the convention generally was marked by that spirit which has made each succeeding annual meeting a record of progress and improvement. Among many excellent papers read, was one from Mr. J. H. Lloyd, of Toledo, O., on the Relations of the Monument Dealer to the Cemetery, which will be published in the next issue.

THE great event of last month was the ceremonies attending the dedication of the Chickamauga and Chattanooga National Military Park, which occurred on the anniversary of Chickamauga, extending over the three days of September 18, 19 and 20. A more extended notice is given in another page. The occasion drew together some of the most prominent people of the country, civil and military, and enthusiasm, tempered by the associations inherent to the surroundings, marked the proceedings without a recorded suggestion of sectionalism. Over one hundred monuments have been erected, and nearly one hundred more are under contract, but the majority of the states whose soldiers fought on the field have not yet made appropriations, so that a large increase in the number of memorials may be expected. Many of those already erected redound to the credit of the commissioners controlling the selection of designs. In this connection it is opportune to remind the commissioners that in the matter of monuments they are working for the future, and that, generally speaking, the Art features inseparably related to memorial monuments, demand recognition in such a collection as will be displayed for public criticism at this military park. To relieve this grand display of commonplace monotony, the greatest of care and broad appreciation of what the circumstances, from all aspects, call for, must be exercised.

THE impetus which the last few years have witnessed in connection with art in general and sculpture in particular, promises increased force rather than any check at present; and it is a gratifying indication of the upward trend of American intelligence. The condition of art in any country, and the extent to which it is express-

ed in the every day life of a people, surely betokens higher education—higher thinking. Throughout these United States today the increased and increasing interest in the products of art in its many fields, is most marked, and in the department of monumental art, there is evidently rapidly coming a refinement in public taste, that augurs well for sculpture in the future, in that it involves the production of a higher class of work, which must stand the test of public criticism. This is, after all, the final criterion, for though public taste changes with the progress of time as to details, truth to nature, correctness of outline, perfection of technique,—genius in conception and execution—change not and are hallowed features of art which run with the ages.

**T**HERE is, however, with this growing interest in monumental art, in particular, the tendency towards overproduction, if the term may be used; that is, in the rush of desire to erect monuments and memorials, especially of a public nature, the choice of subjects does not receive that consideration which is due to the motive, with the result that we have innumerable statues and memorials which represent in a public sense nothing; they have only a local interest; in most cases the next generation will only see in them portrait statues of "man," and the spirit of the motive, excellent in itself which prompted the work, vanished with the lack of judgment in selecting the subject.

**I**T is too early to note the effect of the growing public art sentiment on our parks. The parks of the United States are generally deficient in statuary, and the park, of all sites, offers so many and varied advantages. Our sculptors have had comparatively few opportunities of displaying genius in the line of ideal statuary, and the highest educational value is to be found in this feature of sculptural art. Where can one study an ideal statue to greater advantage and with better opportunities of securing the greatest amount of good therefrom, than amid the natural beauties of the park? And what enhances the natural conditions of the park, and implants another feature of marked interest on its landscape, than a piece of ideal statuary. Park commissioners, the public benefactor and all interested in the welfare of the people, should make statuary a feature of park adornment in the higher sense. It needs careful discernment, artistic sense, a higher order of intelligence, and much study to properly handle this delicate, yet important subject; but its influence from an educational and pleasure-giving standpoint, deserves all that the broadest human capacity can devote to its service.

#### Granite and Marble Production for 1894.

The official report of the Stone Industry of the United States for 1894, by Dr. Wm. C. Day, has recently been issued by the Department of the Interior, U. S. Geological Survey. It shows a gain in production by value for 1894 of all kinds of stone of \$3,492,243 over 1893.

The production of granite in 1893 equalled \$8,808,934 and in 1894, \$10,029,156, a gain of \$1,220,222, which is stated to be due to increased business of a small number of important producers, chiefly in New England.

The total production of marble amounted in 1893 to \$2,411,092 and in 1894 to \$3,199,585, an increase of \$788,493, due to increased activity in Georgia and New York.

The following table gives the value of the granite production by states for 1893 and 1894, with amount of increase or decrease:

STATES	1893 \$	1894 \$	INCREASE \$	DECREASE \$
Arkansas.....	....	28,100	28,100	....
California.....	531,322	307,000	....	224,322
Colorado.....	77,182	49,302	....	27,880
Connecticut.....	652,459	504,390	....	148,069
Delaware.....	215,964	173,805	....	42,159
Georgia.....	476,387	511,804	35,417	....
Maine.....	1,274,954	1,551,036	276,082	....
Maryland.....	260,855	308,666	48,111	....
Massachusetts.....	1,631,204	1,994,839	363,626	....
Minnesota.....	270,260	153,936	....	116,360
Missouri.....	388,803	98,757	....	290,046
Montana.....	1,000	5,800	4,800	....
Nevada.....	3,000	1,500	....	1,400
New Hampshire.....	442,424	724,702	282,278	....
New Jersey.....	373,147	310,965	....	62,182
New York.....	181,449	140,518	....	40,831
North Carolina.....	122,707	108,993	....	13,714
Oregon.....	11,255	4,993	....	6,262
Pennsylvania.....	206,493	600,000	393,507	....
Rhode Island.....	569,799	1,211,439	701,640	....
South Carolina.....	95,443	45,899	....	49,544
South Dakota.....	27,828	8,806	....	19,022
Texas.....	38,991	....	....	....
Utah.....	509	....	....	....
Vermont.....	778,459	893,956	115,497	....
Virginia.....	103,703	123,361	19,658	....
Washington.....	....	....	....	....
Wisconsin.....	131,220	166,098	34,878	....
Totals.....	8,808,934	10,029,156	1,220,222	....

Granite to the value of \$76,000 was produced in Arkansas, Montana, Nevada and Washington together, which is included in the total.

The condition of the granite industry in the several states, may in some sense, be assumed from a perusal of the table, but taking the total amount, it is gratifying to note that a turn in the tide has occurred. The total for 1894 given above, while being \$1,220,222 greater than in 1893, is, however, \$2,597,844 less than the total for 1892; \$3,837,844 less than the total for 1891; and \$4,434,939 less than the total of 1890, so that there is plenty of latitude for improvement yet.

**The New Massachusetts State House.**

GRANITE AND MARBLE DETAILS.

The new Massachusetts State Capitol just completed is a worthy example of the Architectural Art Renaissance, and an extended article could be evolved from the material which composes the monu-



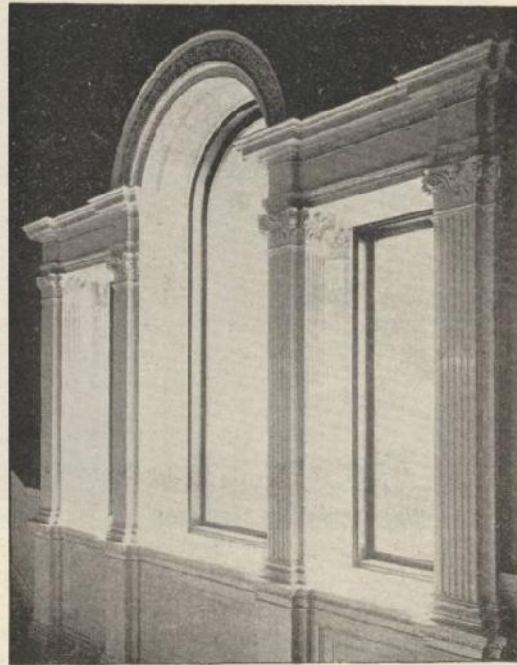
THE PORCH, MASSACHUSETTS STATE HOUSE.

mental work. True it is an office buildings but the executive nature of its functions raises it above the more commercial public edifices. An article of this nature, however, while the writer would be glad to tour the building from room to room, from Council hall to Council hall, through the numerous corridors so stately and grand, must be, in order to fit the columns of the NEWS, of a general character and apply direct to the material phases, which in every detail of ornament and finish exterior and interior, but one scheme predominates, and that scheme is purely classic. It is easy, therefore, for the student of architectural art to discover the clean lines and masses and to separate for his delectation such parts as he may choose. Then, too, the practical phases of the construction are evident and readily lend the artisan, who is earnest in his research, examples which will surely aid him in his work.

In the purely ornamental features of the massive structure, those portions which bear the burden of the weighty anatomy, one may note some superior work; there are also veins and arteries which pul-

sate with a true feeling and animate the vast aggregation. These functions, the masterly piling of block on block, the imposing column, the entablatures, pediments, friezes, dados and like physical structural parts, form in their various modellings and designs, a beautiful study, evidence the genius of man and his power and skill in subduing the stubborn material, making them agreeable to the eye as ornaments, and impressing one with their local strength as well.

There is a refined and solid character expressed in a granite basement, and the material itself, Hallowell granite, which is a fine grained, rich semi-gray and white color, is manipulated with such thorough knowledge that the tenacious granulations while being highly ornamental do not lose their individuality, as it were, and the frosts of time and other climatic changes will never efface the effectiveness of its art nature. The grand porch columns with their carefully ornamented capitols, are chiselled with precision, and yet they are not stiff and unyielding, the design and color effacing all traces of tedious exactness. Here is work that the studio artist



MARBLE CASEMENTS.

might well emulate, it proves to the writer that there is more knowledge evidenced in it than is shown by the painters, it shows that the sculpto has learned his trade.

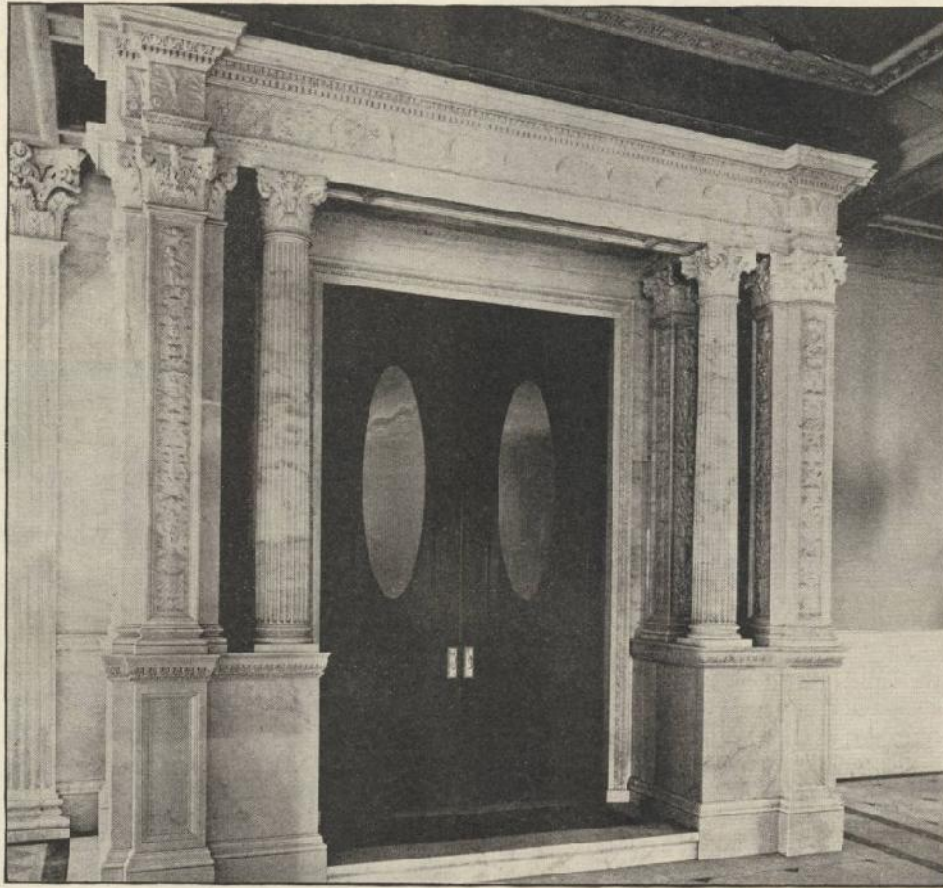
The first story ashlar of the walls and balustrades composed of the beautiful toned surfaces or

the white Vermont marble add to the finish. The hand tooled work is carefully executed and the design is in strict conformity with the surrounding surface decorations as well as reliefs. These features are evident to the running reader and the inspector of such work must note the setting, joining, levelling, plumbing and squaring of the whole.

It is of this very marble, or from the same quarries, that Sculptor Faench's colossal groups of the Boston Post-office are chiselled and its textures un-

mouldings, the door casings, which in most instances are of an elaborate nature, and the vestibule entrance to the House of Representatives.

Other phases of the monumental structure wherein the extensive use of marble is noticeable greet the eye at every turn, the variegated marble fire place facings, the sixteen large lavatories wainscoted with splendid Carrara marble, also the heavy cornices and the risers and treads of the stairs and the finished side capings. I doubt if there is an-



VESTIBULE ENTRANCE TO HOUSE OF REPRESENTATIVES.

der the eye of the trained craftsman reveal its beauty for interior as well as exterior work.

There are some fine results obtained in the entablature-like marble casements at the head of the grand hall stairs where the light jets in from the court. Here some exquisite chiselling is noticeable, not only in the fluting and members of the mouldings but in the capitals, where occur the extreme touches which the true sculptor alone can attain. There are other localities treated with white marble which demand attention and the extensive use of this material is evident in the corridor dados and

other public edifice in the country, which can show such a vast array of finished marble work or better qualities and execution in granite. But for the fact that the illustrations give a more graphic idea of the several parts mentioned, the writer would be obliged to extend the description to a dozen pages.

In brief, the exterior is handsome and imposing with its pediment and columns of marble, its base of granite and intermediate surfaces of buff brick, all so intelligently and harmoniously blended in line, mass and detail surely make an interesting example of a modern renaissance facade. *F. T. Robinson.*

**The Chickamauga and Chattanooga National Military Park.**



2ND. MINNESOTA.—ONE OF THE FINEST ON THE FIELD.

September 18, 19 and 20 marked the beginning of the end of one of the most remarkable projects of its kind for the public welfare that the world has ever seen. On the above dates occurred the ceremonies attending the dedication of the National Park created by the government on the battle fields about Chickamauga Chattanooga and that historic neighborhood thirty-two years ago, of which the above dates are the anniversaries of the campaign.

The term "beginning of the end" is used, because several years must elapse before all the details can be completed, for while twenty-five State Commissions have been actively engaged for some time, preparing for the dedication, only nine, besides the government, have done practical work in the way of erecting monuments.

It is probable that since the war, there has been no more impressive or notable event than the dedication of this National Park. Representative military men, Federal and Confederate, were present from all over the country. The government was present in the personality of the Vice-President of the United States, with many prominent officials of the War Department. A large contingent of State



THE THIRTY ILLINOIS MONUMENTS ARE ALL ALIKE.

officers from the states interested added to the official list, veterans of both sides, enthusiastic and fraternal, joined in the demonstration, and crowds of veterans helped to tax the powers of hospitality and accommodation to their uttermost.

This park, of absorbing interest, covers a large area, at present some eleven square miles of territory, are in possession of the government, and the completed project may embrace in all, fifteen square miles. Besides some forty miles of road, in splendid condition, laid out in such manner that the fields of military operations may be understood as they were carried out, and the battles were won and lost, the several states contiguous to the locality whose public roads lead into the park, have ceded jurisdiction to the government over the required distances.

As an object lesson of military operations carried out on a large scale, as the field of one of the



ONE OF THE KANSAS MONUMENTS.

bloodiest battles of the ages, and a series of movements involving strategy of war of the highest character, and embracing as it does some of the most beautiful as well as grandest scenery in the world; as a park containing a variety of most interesting monuments, many of them works of art, the whole project will hold an interest and continue to attract more and more interest as its development is consummated, unsurpassed by any like area in the world.

Turning to the monuments, which it is intended shall both serve as monuments of those who fell and the regiments which fought, as well as to mark the positions of the troops on the field, only nine states have thus far made appropriations for the work. The appropriations provide for some one hundred and seventy monuments, of which only about one hundred are placed.



ONE OF THE FIFTY-FIVE OR MORE OHIO MONUMENTS.

Ohio heads the list in number of memorials, and provided \$95,000 for fifty-five monuments and attendant expenses. This naturally allows for variety of design. An illustration is given of the Ohio monuments.

New York made an appropriation of \$87,000 which was mostly intended to be expended in one large monument and nine bronze tablets. But some objections have been sufficient to delay its design, and the New York Commission has not yet settled the question.

Illinois provided \$67,000 for thirty seven monuments and expenses. The commission decided to adopt one design for all the memorials, of which an illustration is given. One of the reasons for this was that the positions of the Illinois regiments



A WISCONSIN MONUMENT.

could be more readily recognized and the inscriptions on the monuments distinguish the different organizations.

Indiana appropriated \$40,000 for thirty-three monuments and its commission decided that the material for the body of the monuments should be Indiana limestone.

Wisconsin has provided for eleven memorials, setting apart \$20,500 for the purpose. Some of these will be of Wisconsin material.

Michigan decided to erect twelve monuments and allowed \$20,000 for the purpose. These were all contracted for from the East.

Minnesota has more artistic work in her five memorials proportionately than any other state. The bronze group "Defense of the Flag," at the head of this article is a beautiful bronze group. Her appropriation was \$15,000.

Missouri and Kansas both give \$5,000 for monuments, five being the number required for each of these states.

Tennessee will erect four monuments of Tennessee marble and Munich bronze, and provided \$10,000 for the work.

The period of depression has undoubtedly interfered to a great extent with the active co-operation of the other interested states, but there is no question but that work will continue to be energetically prosecuted until the park is completed.

The United States government has been most liberal in its appropriations, as well as in the policy adopted for the government memorials, both Union and Confederate lines being marked with equal care.

In marking points of interest the Government Commission has constructed eight triangular pyramidal monuments, built of half shells, erected exactly on the spots where fell the eight brigade commanders, four Union and four Confederate. To mark general and corps headquarters, eight square shell pyramids have been set.



11TH REGIMENT MICHIGAN INFANTRY.

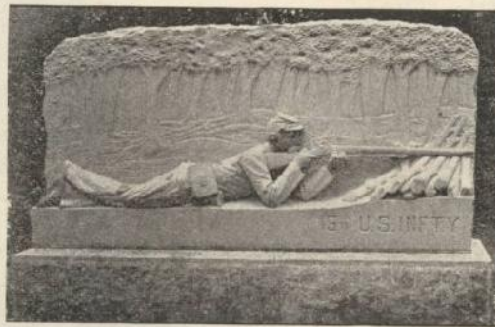
Four hundred mounted guns of the type of that date mark the fighting positions of thirty-five Union and thirty-nine Confederate batteries—two guns to each battery, and repeated where battery changed position.

Four hundred historical tablets are already set up, and some sixteen hundred more will be required. On these brief descriptive statements are given.

In addition to the above, five observation tow-

ers have been erected at prominent points on the field, which will greatly improve the possibilities of obtaining knowledge of the events which took place over this beautiful country.

As the states make appropriations to memorialize their heroic organizations, a large amount of monumental work will yet be required, and it is sincerely to be hoped that the claims of art will be so recognized that a dreary monotony of stone work will not mar this grand conception.



#### Slate and its Uses.

If in the course of a conversation, a person outside of the slate districts should mention slate, the reply or remark would possibly be, "Slate—ah, yes, it makes a nice roof." This may be very likely be all the knowledge they have of the uses of slate. To those who may not know to what an extent slate is used, it may be well if we just enumerate a few of the most useful forms into which it is manufactured, and the easiest method to do this will be to divide the extent of its uses into sections, taking the use of slate in and about the dwelling house as our study. Time was, and not a very great while ago, when the majority of houses in the country were covered with wooden shingles; but that is past now, for the extensive production of slate has driven out the shingles. We will take the interior of the house and consider some of its slate furnishings:—

The first thing that usually attracts attention upon entering a house is the mantelpiece. A mantelpiece may be of marble, wood, iron or slate. Marble is in itself costly, and cannot be indulged in by those of limited means. Iron mantels have a great many disadvantages, cast iron in particular being easily cracked, nor can they be cast with so perfect a face to take polish as the slate is capable of receiving. It is a noticeable fact that most iron mantels are supplied with a slate shelf. Now, if slate is superior for the shelf, why not for the rest of the mantel? The marble mantel, when of a good color that should harmonize with its surroundings, is a

thing of beauty, but only a thing of beauty as far as it does harmonize. We are all acquainted with the "white marble" mantel; many a good room is spoiled in its effect by its introduction. Take a dining-room, for instance, whose general tone is, perhaps, a warm terra cotta, or salmon color, broken with gold leaf on mouldings as a contrast. Now fancy a great white mantel breaking the whole effect. I have seen it often and often, and I never look at such a botch of taste but what I fancy I can read right across the frieze of that mantel, "Sacred to the memory," as though it were a tombstone.

The slate mantel lends itself most readily to be enamelled in any color desired, and as marble is beyond the means of the general public, slate can be used in its place. The mirror frame above the mantel also can be, and is, made of slate.

There is also the wood mantel, a close competitor with the slate mantel. The wood mantel has a great many drawbacks. It does not seem to matter how thoroughly the lumber be dried before being put into the mantel, yet it will always check when put into the mantel and set up in the house, and when once it commences to shrink and check there is an end of the wood mantel, as far as strength and neatness is concerned. Slate cannot shrink, does not check, and when once set up it stays, and nothing short of a sledge hammer will have any effect on it. To prove how little faith wood mantel men have in their wood as a lasting material for mantels, they have tile inside facings, or slate facings, because of the heat.

The next important use to which slate is put in the house is that of kitchen sinks and laundry tubs. Sinks made of slate are more than desirable, from a sanitary point of view; they are a necessity. A useful sink should be so constructed as to give the greatest comfort with the least possible danger of disease arising from imperfect drainage of the sinks. Most of us can remember the old wooden sink, zinc covered, with its unpleasant odor of damp wood, the damp and rotten woodwork surrounding it. Not only was all this unpleasant, but a positive menace to the health. It was the hotbed or forcing frame from which many a case of typhoid and similar fevers germinated. A good sink, from a hygienic standpoint, should be made of a material that is impervious to moisture. In this respect slate is par excellence—it does not easily collect grease; cannot be affected by any acids in general use, and is the strongest and cleanest sink in use. Sinks are made of many patterns, but one of the most useful is the high back-sink, with drain board attachment. The back is usually from 12 in. to 18 in. above the sink proper; the depth of sink, outside measurement, is 8 in. The sizes, as far as length is concerned, vary according to requirements—if a 4 ft. sink, then a 24 in. drain board is raised nearly level with the front, leaving half the length for the sink proper. The advantage of the drain board is to raise the water-bucket up out of the way, and the drain board being grooved allows the drainage of the pail to run back into the well of the sink. The high back and end is a protection for the walls against splashing from the faucets. Another use, and a most artistic one, to which slate has very recently been put—that is, to any extent—is the wainscoting of halls, stairways, and lavatories.

In flats a great many are being supplied with slate steps and landings, as they last longer and are easier cleaned, and in public buildings slate is almost the only material for steps and landings that architects will recommend. Another article used extensively in all flats and tenement houses now being built in the cities is the stationary slate laundry tub. These tubs are either two or three compartment, 14 in. or 16 in. deep, with hot and cold water faucets and waste plugs in the bottoms.

There are many minor uses to which slate is put in and around the house.

Much more may be written of the virtues of slate, and like the good citizens who some centuries ago met to decide what was the best thing to protect the city with—they came to the conclusion there was nothing like leather—slate men and all sensible builders say "there is nothing like slate." *G. B. Beuford in Carpenter and Builder.*



Statue of William Tell.

A statue of William Tell and his son, designed and executed by the Swiss artist, M. Richard Kissling, has just been unveiled at Altdorf, on the Lake of Lucerne, close to the spot where tradition affirms that the Swiss hero refused to bow to Gessler. Tell's chapel has long been one of the chief features of interest in the neighborhood of Lucerne. The new statue is a fine vigorous piece of work, bearing on its pedestal the inscription;—"The Swiss people to its William Tell." The story of William Tell has been a popular one for generations and has formed a favorite subject for ideal work with artists. Of late years it has suffered from research and William Tell, the heroic father, has lost some of his earthly attributes, owing to his history being merged into the legendary. However the subject will always be a strong one for the sculptor, on account of the physical characteristics pertaining to the general interpretation of the story.



## Foreign Notes.

A marble statue of Dr. James Martineau is to be placed in Mansfield College, Oxford, England.

A. Gilbert will design the memorial in the crypt of St. Paul's, London, erected in honor of the late artist, Randolph Caldecott.

During the current autumn a monument is to be unveiled at Osteel, in East Friesland, Holland, in memory of the discoverers of the sun's spots, David and Johann Fabricius.

The emperor of Germany has recently erected a monument at his own expense and designed by himself to the memory of the Prussian soldiers who fell at Missunda in 1870.

A plan is proposed to line the Avenue de Champs Elysees, Paris, with 100 statues of more or less celebrated Frenchmen. It is meeting with much opposition from several quarters.

A statue is to be erected to Victor Hugo in the square in the center of the avenue named after him and near the house where he died. Forty thousand dollars have already been subscribed for it.

It is proposed to erect statues of Siemens and of his colleague and friend, Helmholtz, in front of the Technical High school in Charlottenburg, Germany, in the same manner as the statues of the brothers Humboldt were erected in front of the Berlin university.

A memorial to Condell and Herning, the prompters of the Globe and Blackfriars theatres in Shakespeare's time, is to be put up in St. Mary's, Aldermanbury, London, where their bodies lie. It is to their care that we owe the preservation of the greater part of Shakespeare's plays.

The monument recently erected to the memory of the late president Carnot at Nolay, France, is the work of the sculptors MM. Roulleau and Falguiere. On a large pedestal of white-veined marble on which are sculptured the symbolical attributes of justice and war, stands a statue of the late President, picturing him at the moment of his death falling back into the arms of an allegorical figure of France.

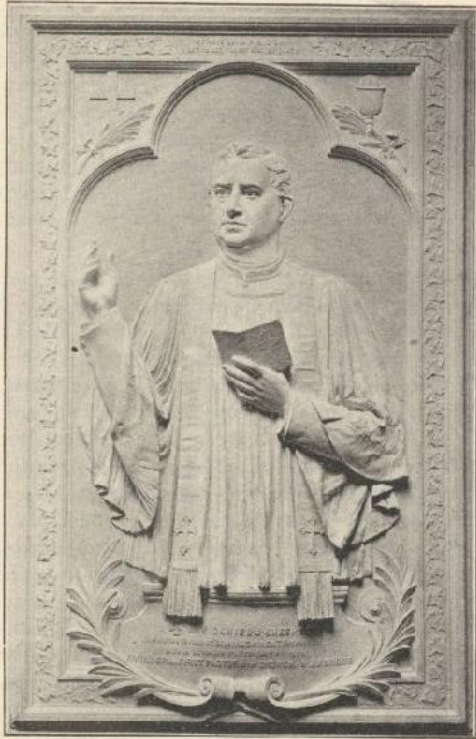
The monument of the Linderhof, near Munich, to the memory of the unfortunate King Louis II, of Bavaria, is of peculiar interest to Americans. The model was the work of an American woman sculptor, Miss de Ney, who enjoyed the special favor of the art-loving ruler, for he established a studio for her in Munich, and so far overcame his dislike of the female sex in her case, as to sit as her model. Miss de Ney, after doing much excellent work in the Bavarian capital, disappeared several

years ago and only recently, it is said, her Munich friends have learned that she has been living in Mexico. From the model made by Miss de Ney, the Berlin sculptor, Herr Ochs, chiselled the present monument out of Carrara marble. The statue which is said to be extremely lifelike, represents the King—who has been called the handsomest man of his time—in the uniform of a St. Hubertus knight.

The statue of Lord Byron which is to be erected in Greece has been offered to Greece by Stefanovich Schilitzi, the Greek banker of London. It was Schilitzi to whom last year, was due the building of a Greek church which cost many millions of francs, and which will soon be consecrated. The same donor has also given to the city of Paris 2,000,000 of francs for an asylum for old men. Subscription lists are opened in Greece to raise statues to General Maison, who delivered Greece from the Turkish and Egyptian armies; also to the commandant Favier, killed under the walls of Athens during the war for Hellenic independence; and to Victor Hugo, who sung of the heroes of the war. But to the Greeks, the veneration for the memory of Byron surpasses that felt for all the names we have mentioned. For besides the sacrifices he made for their independence, he revived by his presence in Greece the movement of Philhellenism in Europe.

Sealed proposals in duplicate will be received by the War Department, Washington, D. C., until 2 p. m. Saturday, Oct 26, 1895, for furnishing and erecting in Gettysburg Military park a bronze tablet having upon it a medallion of President Lincoln and his address at the dedication of the National Cemetery. Forms and specifications can be obtained at the office of Public Buildings and grounds, War Department, Washington, D. C. John M. Wilson, Col. Engrs.

Tennessee will erect four monuments in the Chickamauga National Military Park, as follows: Three to Tennessee Confederate Soldiers,—infantry, cavalry and artillery; one to Tennessee Federals,—cavalry. The material will be Tennessee marble, Munich bronze. In design, the base will be a plain rustic slab of marble, 6 feet 8 inches square, surmounted by a pedestal of marble. The four pedestals are all alike but will support bronze statues, one a cavalryman unhorsed in the act of drawing a sword, one artilleryman in action and one an infantry soldier representing the lost cause. The pedestal for the Federal soldier will carry a cavalry soldier in full uniform. The figures are to be cast in Munich. The contract for the four monuments has been awarded to the Muldoon Monument Co., of Louisville, Ky.



BRONZE MEMORIAL TABLET TO REV. DANIEL J. SHEEHY.



THE Sheehy Memorial Tablet, illustrated above, was modelled by G. Moretti and cast by the Henry-Bonnard Bronze Co. of New York. The Rev. Daniel J. Sheehy was founder and first pastor of the church of St. Ambrose, Brooklyn. The tablet is 5' 8" long and 3' 6" wide. The late pastor is represented as addressing the congregation, with the breviary in his left hand. At the top there is this inscription: "We have loved him in life; let us not forget him in death." There is another inscription at the bottom, giving the name and age of the priest. The tablet weighs 450 pounds.

G. E. DALLIN, the sculptor of the "Signal of Peace" and other works, has accepted a position in the Drexel Institute of Philadelphia, as instructor in the modelling department.

E. ONSLOW FORD, the English sculptor who has just been elected a member of the Royal Academy, will be remembered by his work exhibited at the World's Fair. This included a bust of Mr. Gladstone, statue of General Gordon on a camel, and Henry Irving as Hamlet. The work exhibited at the Royal Academy this year, and which finally, perhaps, secured him the honor of membership, is a bronze "Echo," which is en-

thusiastically praised for its graceful pose and modelling. Mr. Ford is a young man, born in London in 1852, and began his art life as a painter.

NEBRASKA comes forward with a woman sculptor. Miss Tuttle, of Lincoln, 18 years of age, has a bust of Dr. H. M. Everett, a well known surgeon, to enter in the Art exhibit of the State Fair.

A STATUE of Circinnatus, made some forty years ago by Mr. Baker, a pupil of Hiram Powers has been placed in the City Hall of Cincinnati. It is in bad condition in many respects and is the subject of a flood of criticism.

JACOB FJELDE, the Norwegian sculptor, of Minneapolis, has been selected to design a statue of Ole Bull, the famous violinist, towards the consummation of which Norwegians all over the United States are energetically at work. The statue will be of bronze and will be erected in one of the parks in or about Minneapolis.

ROBERT TOBERENTZ, a German sculptor who spent two or three years in this country previous to 1890, died during the recent festivities at Kiel. He was a resident of Berlin and at the time of his death was a professor in the Breslau school of art and is said to have had an important commission from the German Emperor. While in this country he modelled a bust of Carl Schurz and a large figure of Hermes. He was one of the many young sculptors who have been helped along by kind-hearted Casper Burberl.

ANNIE WHITNEY, the sculptor, has been commissioned to make a bust of the late Lucy Stone for the Shurtleff Alumnae Association of South Boston. It will be in marble, and a reproduction, life size, of the one owned by the Massachusetts Woman Suffrage Association. The work will be unveiled early in the winter, and it is expected that such women as Julia Ward Howe, Mrs. Mary A. Livermore, the Rev. Mary D. Whitney, Dr. Salome Merritt, and Miss Alice Stone Blackwell will be present to add their tributes.

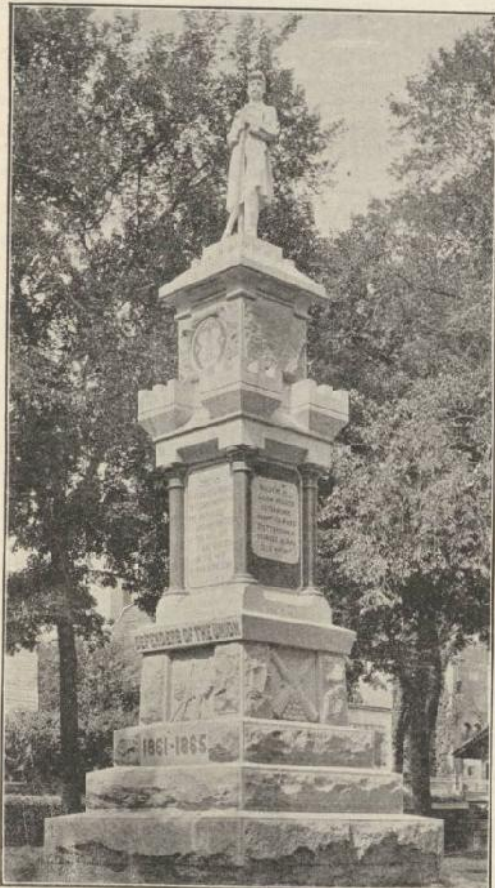
SCULPTOR Valentine, of Richmond, Va., the southern sculptor, has just completed a statue of Jefferson to be placed in the grand entrance of the Jefferson Hotel, soon to be opened at Richmond. At the World's Fair Mr. Valentine's group of "Andromache and Astyanax" will be remembered. Andromache was represented seated, with one hand laying listlessly by her side, and the other clasping her infant son. The distaff and thread are on her lap, showing that an effort has been made to obey her lord's behest, but the whole attitude, especially the expression of her face, shows that her heart is filled with forebodings of evil to him. The group with the Blind Girl, attracted much notice at the World's Fair.

THE casts of the frieze of the Parthenon, the originals of which are in the British Museum, London, have been received and placed in position in the Art corridor of the Pittsburg Carnegie Library. The frieze, as is generally known, represents the procession for the third day of the Pan-Athenaic festival. The figures are those of the priests of Athenae, leading the sacrifices to the temple of Athens titular deity, and followed by crowds of people, on foot and horse. The extraordinary question is how Phidias ever designed such a collection of figures without using a model. The casts are from the originals, and must be highly prized, and will form the frieze of the Art corridor. Only a little over a hundred feet of the original 800 feet can be used, but some 26 of the finest slabs will be on view in the space.

**Soldier's Monument at Newton, N. J.**

The Soldier's and Sailor's monument at Newton, N. J., which we here illustrate was dedicated with appropriate ceremonies on September 5th.

It stands in the public square and was erected



NEWTON, N. J., SOLDIER'S MONUMENT.

at an outlay of \$6,000, two-thirds of which was appropriated by the county and the balance was raised by popular subscription. The monument is of dark Quincy granite from the famous Granite Railway Quarries and the statue is of white Westerly granite. It rests upon a base 12 feet square and with the eight foot figure is 33 feet in height. C. E. Tayntor & Co. of New York were the contractors and designers, the design as shown being a modification of the original design submitted by them. The inscription on the front of main die reads: "Erected by a grateful people to commemorate the services and sacrifices of the soldiers and sailors in the war of the Rebellion." The panels on the sides bear the insignia of cavalry, infantry, artillery and navy; and the battles in which they fought.

**Monumental Notes.**

The monument erected by the Bucks County Historical Society at Taylorsville, formerly McKonekey's Ferry, to mark the spot where Washington crossed the Delaware river; consists of a brown stone obelisk with base rough dressed on three sides, the fourth side plain and bearing a suitable inscription. After the conclusion of the dedicatory exercises, October 1, on the Pennsylvania bank, a tablet in commemoration of the same event will be placed on the opposite shore by the Cincinnati Society of New Jersey. Both states thus memorialize the event.

Dr. Jonathan Ackerman Coles has purchased for presentation to the city of Newark, N. J., a beautiful group in bronze, consisting of three figures—an American Indian, his wife and her mother, each life size. The group was executed by the American sculptor, the late C. B. Ives, in Rome. It relates to the story, given by Parkman and others, of an Indian who married a captive white girl. Some years later the girl's mother met her, but the daughter failed to remember her, until she sang one of the old songs she had sung years ago for her child. The group will have an especial interest for the citizens of New Jersey, says the *Boston Transcript*, because that state is said to be the only state in the Union that always paid the Indians for their land. Dr. Coles is a son of the late Dr. Abraham Coles, whose translation of the latin Hymn "Dies Irae" is well known.

Among the latest public works to be begun in Washington, D. C. is the erection of a bronze statue of General W. S. Hancock, which is to be placed at the corner of Seventh street and Pennsylvania avenue. The work of preparing the foundation is in charge of Messrs. A. B. Mullett & Co., who are the architects of the pedestal under the direction of Mr. Ellicott, the sculptor, who has the general contract for the production of the completed work. Messrs. Mullett & Co., have sublet the contract for the foundation and the erection of the granite pedestal to Messrs. Esher & McMinim. The concrete bed will extend six feet below the grade and will contain 6,870 cubic feet resting on a fine bed of clay that is almost as solid and firm as what is known as "hard-pan." The pedestal is to be of Red Beach Maine granite all hammered and will weigh about 457 tons. The statue, which will be of bronze, will weigh 2½ tons. The plaster casts of the horse and its rider have been sent to the foundry of the Gorham Manufacturing Co., in Providence, R. I. where the bronze casting is being done. The contract price for the completed work is \$49,000.



REGULAR EDITION.

THE NEW MASSACHUSETTS STATE HOUSE, 547-548.

THE CHICKAMAUGA AND CHATTANOOGA NATIONAL MILITARY PARK, 613 615.

STATUE OF WILLIAM TELL, Richard Kissling Sc., 616

BRONZE MEMORIAL TABLET to Rev. Daniel J. Sheehy, 618.

NEWTON, N. J., SOLDIER'S MONUMENT, 619.

VIEW IN C. E. TAYNTOR &amp; CO'S QUARRY during a visit of Western dealers, 621.

AN ATTRACTIVE MONUMENT, 624.

ADDITIONAL ILLUSTRATIONS IN INTERNATIONAL EDITION.

MONUMENTS ERECTED BY THE STATE OF OHIO IN the National Military Park at Chickamauga, Tenn., and dedicated last month. 90th. Ohio Infantry, Croft's Brigade. 94th. Ohio Infantry, 1st. Brigade. 14th. Ohio Infantry, 2nd. Brigade. 31st. Ohio Infantry, 1st. Brigade.

DESIGN FOR A MAUSOLEUM.

DESIGN FOR A ROCKFACE SARCOPHAGUS.

DESIGN FOR A ROUND MONUMENT.

DESIGN FOR AN ARCH MONUMENT.



**Bellefontaine, Pa.** Over \$1,300 has been collected for the monument to the "Old War Governor" of Pennsylvania, Andrew G. Curtin. General Beaver is chairman of the monument fund committee.

**Chicago, Ill.** A memorial is to be erected to the memory of the dead of the Board of Trade Battery, who perished in the war. The Board of Trade Memorial Association, Frank B. Rockwood, Secretary, has charge.

**Montreal, Canada.** The proposal to erect a monument to the memory of the late statesman, Honore Mercier, has taken definite shape. The intention is to erect a monument to cost from \$30,000 to \$40,000.

**Jersey City, N. J.** Funds are being raised by the United Singing Societies of Hudson Co., N. J., for a monument to Prof. Wilhelm Groeschel, late director of the societies.

**St. Paul, Minn.** The legislature is to be petitioned to erect a monument on the new capitol site to commemorate the bravery of all the Minnesota troops in the war.

**Louisville, Ky.** Subscriptions are being received for the erection of a monument in memory of the soldiers of the Louisville Legion, who died by the explosion at the recent reception of the G. A. R.

**Naperville, Ill.** A monument is to be erected in public park under direction of Walter Blanchard Post, No. 386, G. A. R., to be built of Naperville stone.

**Concord, N. H.** \$3,000 of the proposed \$12,000 has been pledged for the Franklin Pierce monument project.

**Sparta, Wis.** A scheme has been formulated for the erection of a soldier's monument in the Court House park. John W. Lynn Post, G. A. R. is in charge.

**Green Bay, Wis.** A plan is perfecting to erect a monument on the site of old Fort Howard.

**New Orleans, La.** Three thousand dollars are in hand towards the proposed monument to General Beauregard.

**Kansas City, Kas.** E. T. Heisler, of Kansas City has been delegated to form an organization to erect a monument to the entire cavalry of the state of Kansas who died in the war.

**New York City.** The Hungarian Society has held a successful national festival in New York to raise funds for a monument to Louis Kossuth, the Hungarian patriot.

**Ottawa, Ill.** A movement is on foot to erect a monument in memory of Shabbona, the old Indian Chief who was such a constant friend of the white man in the pioneer days of Illinois.

**Pulaski, Tenn.** A movement is progressing to erect a monument to Samuel Davis who was hanged here as a Confederate spy.

**Orange, Va.** A movement has been inaugurated to erect a granite shaft to the memory of the Orange soldiers, killed in the late war.

**Albany, N. Y.** The project for the soldiers monument at Albany, N. Y., after a lapse of some years is again on foot. The \$13,000 originally subscribed has been turned over to new hands. J. C. E. Scott is secretary.

**Brooklyn, N. Y.** \$15,000 has been pledged for the memorial to the victims of the British prison ships in New York harbor.

**Atlanta, Ga.,** Funds are being raised for a monument to the memory of Eli Whitney, the inventor of the cotton gin.

**Brooklyn, N. Y.** \$4,000 has been provided in the will of Theodore Schloerb for a monument over his grave in Greenwood Cemetery.

**New Orleans, La.** Provisional plans have been adopted by Confederate Veterans Associations, to erect a monument to the women of the Confederacy.

**Lewisburg, Pa.** A movement has started for a monument to Union County soldiers and sailors.

**Boston, Mass.** The Warren Monument Association is again moving for a statue to Gen. Joseph Warren, the revolutionary hero.

**Rochester, N. H.** About \$3,600 has been subscribed for a monument for the public square.

**Kansas City, Mo.** Committees have been appointed to secure subscriptions for a \$5,000 monument to the Confederates buried in Forest Hill Cemetery.

They have queer stone cutters down in Maine, says Harper's *Bazar*. Deacon Hackett lost his second wife lately, a scrawny and shrewish woman, whose loss was not an unmixed sorrow. Still, the deacon dutifully decided to give her a monument. Being rather "near" he haggled with the village stone cutter as to the size of the slab, and finally chose a very narrow one, at a bargain. The inscription was to be as follows:

SARAH HACKETT.  
"Lord, she was thinc!"

But the stone was so narrow that there was no room for the latter letter, so the stone cutter left it out, with this result:

SARAH HACKETT.  
"Lord, she was thin!"



VIEW AT C. E. TAYNTOR & CO'S QUARRY, BARRE, VT., DURING VISIT OF WESTERN DEALERS.

#### The Excursion to the Quarries.

As it has been suggested that a brief article relative to the trip to the quarries might be of interest to the trade—although little interest was shown at the time—I undertake to give for your valuable paper what, at most, will be a meager account of what we saw:

First, what promised to be a respectable excursion party, at the last day dwindled down to an insignificant number, who, nevertheless, resolved to go, simply as a private party, and so notified the parties east to save ourselves further unnecessary humiliation, and further preparation in the east. The party, that finally materialized, consisted of Mr. Truesdell and wife of Port Huron, Cartwright of Detroit, and myself and wife—all of Michigan—and Ambrosius, Nason, Hosler and wife, and sister, of Chicago, and Schlingen of Madison, Wis., and Zingen of Pekin, Ill., and Cary and wife of Zanesville, Ohio. While small in numbers, they were men that reflected no discredit upon the trade. They all entered upon it with a full purpose to get the most out of it, and all may be assured they did so, up to "high water mark," both as regards pleasure and business.

Our route was followed, as published in advance, which in due time brought us to our first objective point, Barre, Vt. Here, or rather at Montpelier, which are practically one, so far as visiting dealers are concerned, being but six miles apart, our party stopped at the "Pavilion House," which is a large and commodious hotel.

Our party arrived here late at night and the following morning received calls from various members of the Barre association, including Mr. Tayntor, its present secretary, who extended a cordial welcome to our party. We accepted their kind invitation to show us around and visit the various granite manufacturing plants. We first visited the large plant of C. H. More & Co. at Montpelier, which is the old Wetmore & Morse plant, and saw all the improved machinery, tools and other appliances in operation. It is a well equipped plant. What mostly attracted our attention here—being the first we saw—was the large

surface cutter, of which we had all heard, but found it in practical operation, and seemed to be doing excellent service. It is simply a very large pneumatic tool, and works from the end of a horizontal lever, which is controlled by the operator, who can give it a circular, and I think a horizontal movement, back and forth, enabling him thus to cover the entire surface of the stone, and it can be moved from one stone to another with ease, being on a small truck. It takes the stone from the pointing and works it to the finish.

From there we were shown through the other plants, largely by the courtesy of Mr. Bush, of the Vermont Granite company, and found them nearly all running up full, and were told, with sufficient orders on hand for at least thirty days. The plants are principally located at Barre, and they seemed to be turning out a large percentage of heavy and good work and using a fine grade of dark Barre granite.

Among the manufacturing firms we visited, I can recall Jones Bros.' fine plant, and they are building a new one; Barclay Bros., Milne & Wylie, Stephens & Reid, and Vermont Granite Co., and others, that I cannot now remember. Most of them run the hand pneumatic tool, and speak well of it, as a marked improvement in executing light work, like tracing, carving, lettering, etc., with skill and dispatch. Some of the above firms also use the large surface cutter, but I am unable to recall just who, excepting Jones Bros. and Clarihew & Gray, and possibly Marr & Gordon, but they involve a large expense in their purchase. It is said they do a good amount of work, and do it finely, but to be of any appreciable advantage, am told it should be in constant use, and mostly on rather large work. After spending about one day in looking over these plants we all felt a higher respect for the business as conducted there. The plants were larger, better equipped, and the firms "bore with a larger augur" than most of us, at least anticipated.

We were told that arrangements were perfected to give us a ride on the Barre railroad—by special train—up on the granite hill, to show us the noted granite quarries. So we, with our la-

dies, were ready on the morning of August 25th to ascend the big hill. The day was fair but not entirely clear when we started with the little train, steaming along up the hill, and nearly all of the Barre firms were represented in the party, and among them was the Hon. E. L. Smith, mayor of the town, and our sails were spread for a good time.

Our first stop was at the quarry of C. E. Tayntor, where had recently been quarried a mammoth spire, fifty one feet long and four feet square at its base, to be placed in Greenwood cemetery, Brooklyn, N. Y. This was surface cut on one side, and we were invited—the whole crowd—to mount the spire and have our photograph taken, which find illustrated herewith.

This quarry has a very fine steel derrick, recently erected, which is of very large capacity, and they made a good exhibition of it. Next we came to the well-known quarry of the Wetmore & Morse Granite Co., which is on the summit of the hill, and is the largest there. It lays very handsome, and here we obtained a fine view of the surrounding country, 1,000 feet above Barre. So far we only find the light and medium granite, but as we go down on the opposite side of the hill, we find the dark quarries. Coming first to the E. L. Smith & Co., and in order, Wells & Lamson, Empire Granite Co., Milne & Wyllie, Vermont Granite Co. and Langdon quarries. These produce the dark boulder granite and have a rougher look, and seemingly more difficult to quarry out, and was told that they run very much the same in quality of stock. They are all well equipped and in good working order, and would seem that there is literally a mine of wealth in this hill, of almost inexhaustible supply.

On returning to Barre our party was tendered a dinner at the City hotel, by the Barre association, and it was well served, and I think our party showed their appreciation in a practical manner. In view of the courtesy extended to us a resolution was offered and unanimously adopted, to-wit:

"Resolved, By the Granite and Marble dealers of Michigan, and the contingent of Illinois and Wisconsin, that we extend our grateful thanks to the granite manufacturers of Barre, for their kindness and generosity, in furnishing us with a special train to convey us to and from their celebrated quarries, and for the splendid entertainment and courtesies extended to us during our brief sojourn among them."

Next, at Rutland, Mr. Geo. C. Royce, Secretary of the True Blue Marble Co., called at our hotel and invited us to take a ride up to West Rutland with him and look over the plants and quarries there, which we gladly accepted. We were accompanied by Mr. S. A. Howard, manager of the Vermont Marble Co.'s interest at this place. Through his courtesy we were shown through their large plant, which is very complete in equipment and admirably adapted to their extensive trade. We were then shown their quarries of Rutland marble, which look quite different from the granite quarries, as the latter are all open, while the former are opened by a large deep hole made nearly vertical, and following the vein of the marble, will then turn and go horizontally into the mountain and bring out the marble from under it by means of this tunnel. The marble is quarried into large square blocks, weighing from six to seven tons each. Mr. Howard informed us that the large piles corded up there—about 7,000 of them—would make a total of 50,000 tons of rough marble at these quarries. A little beyond here are located the True Blue quarries, which Mr. Royce kindly showed the party, as well as their fine plant for manufacturing, and their output, while not so extensive, is apparently of a good quality of blue marble.

At the latter quarry we saw where, as Mr. Royce told us, the first marble was quarried in the state, in 1785 and for many years after, it furnished the only marble used from this state. It is claimed to have stood the test of time equal to any.

We next found ourselves in Quincy, Mass., but only looked over the quarries and plants partially, for want of time. The quarries here are worked deeper, and I should say at greater expense for getting out stock, and has a decidedly rough look in the quarry.

Here we learned incidentally by the proprietor of the Green Leaf hotel, of the serious effect of the failure of our projected excursion. In order to secure accommodations for the number that they had been told they could reasonably expect—and seemed were pledged to go—the Quincy association were forced to rent the hotel outright, at \$150.00 per day, and take its proceeds, and we were told it would "let them down" at least \$250.00. I most sincerely sympathize with the committee who had this affair in hand, who worked hard and in good faith for the success of the enterprise, only to find at last, that the situation was one of extreme humiliation for them. However, sympathy does not pay the shortage of the Quincy association in this matter, and sincere lament can only be expressed for the position in which it has placed them, and only too, from their generous endeavor to treat us hospitably. Quite liberal arrangements had been made for formal entertainment both here, at Barre, and at Boston, and what would have been a feast for all, produced disappointment and financial loss. We saw in the old Quincy cemetery marble and slate headstones, bearing date as far back as 1625, and in most cases the marble that had stood over 150 years was badly affected by time, and the inscriptions not readable, but not so with the slate or even brown stone. Just opposite this yard are deposited the remains of John and John Quincy Adams and their wives, beneath the old Unitarian church of this place. Our limit of space is passed, but cannot refrain from saying as a whole, the trip paid us richly. The splendid scenery down the St. Lawrence river, through Vermont along the Green Mountain rangé, the beauty of which is hardly surpassed anywhere in this country. As we traveled along at the foot of these mountains, from Montpelier to Rutland, and then on toward Boston, were found a continual feast to the eye. These, coupled with taking in the points of interest about Montreal, Boston and New York, our homeward trip up the Hudson, with its picturesque scenery all along its shores, are opportunities seldom embraced by any of us, and I can only say, that those who *could*, and *did not* take this trip, have missed more than they perhaps know of. Such scenes enlarge our horizon, giving a wider mental vision, that helps to enrich our views of life.

JACKSON, MICH.

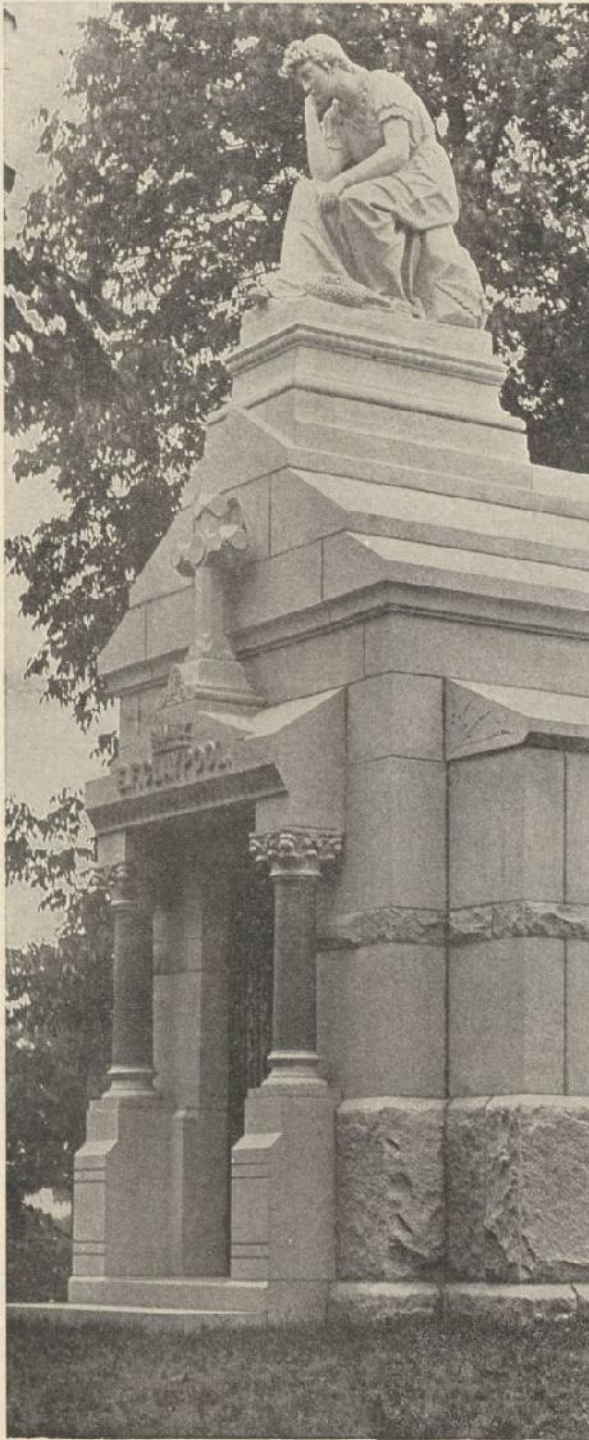
C. W. Hills.

\* \* \*

#### Michigan Dealers' Excursion to the Granite and Marble Quarries.

Promptly and without excitement or bustle, the engineer of No. 76 gave the throttle of his faithful engine a twist, while the sky as suddenly darkened as the vaporous clouds of disappointment and moisture rolled down from Lake Huron to overspread the State of Michigan, putting on as it were a garb of mourning. For was it not the unhappy day and hour when there was to go forth from within her aqueous boundaries a body of men and women, likewise sweethearts and others, who the same if returned not, would rob many a poor bug or angle worm of a shadow, within which to cool his or her (as the case might be) aching limbs.

The night sped swiftly on, also the train, and as mysterious noises perambulated through our sleeper, reaching to the utmost depths, and if you will permit, innermost recesses, of our otherwise supposedly private but temporary possession. The night wore on but the succulent proboscis did not seem to wear any smaller but increased in dimensions as it the night grew less, so that when the morning sun sprung forth and rested her aching and fevered eastern limb on the bosom of Lake Ontario, those



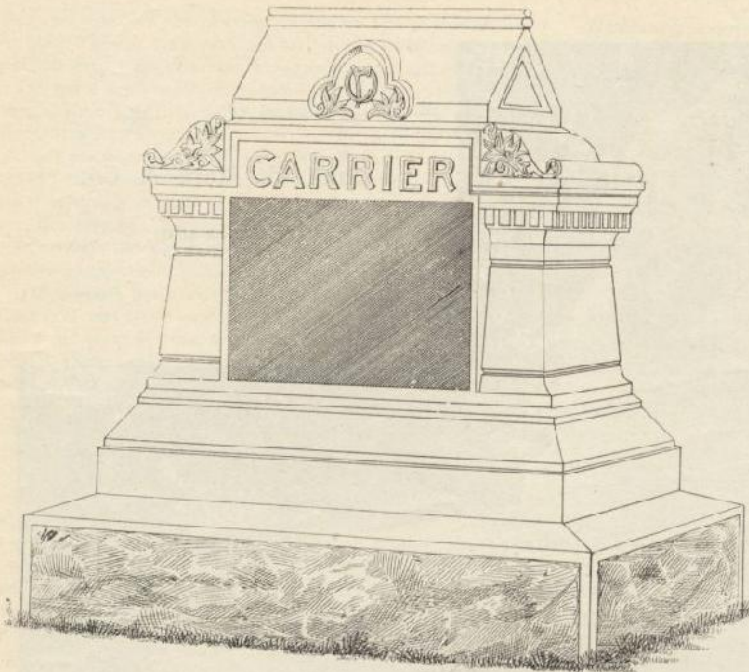
BUILT  
BY



**Chas. H. More & Co.**

QUARRIERS AND  
MANUFACTURERS

Barre, Vt.



MONUMENT ERECTED BY E. E. STEWART, REYNOLDSVILLE, PA.

**An Attractive Monument.**

The monument illustrated on this page was erected a short time ago by Ethan E. Stewart of Reynoldsville, Pa. It is made of dark Barre granite, and is certainly an attractive and neatly designed monument. Mr. Stewart writes that it is the best monument in several counties thereabouts, and he feels somewhat proud of it. Attractiveness and neatness of design are two elements often overlooked in the monument business, and yet both carry great weight in the promotion of a successful business. It is now recognized that the time has come to exercise more care. The father of the family to whose memory it is erected raised nineteen children, and lived to the ripe old age of 90.

of us who had not slept the sleep of the just were glad in our hearts, for we knew that the porter would soon put the cup of quietness on all who had sung mournfully through the deepening and shallowing night.

Mighty Niagara trembled as we approached her rugged shores (por qua), nor was there one in all that party who for a single instant noted the mighty rush of waters, the appalling depth of her mighty chasm, nor gave a thought of the countless ages that the mighty torrents had labored to sculpture those rocks into their present form, laboring day and night incessantly, pounding and chiseling with Nature's tools alone; roaring and struggling, using to advantage the most minute grain of sand or rushing bergs, drubbing and scrubbing through the countless centuries, to quarry from Niagara's ancient bed more stone than the hands of men have lifted since the world begun, (I figured it all out myself). But what I want to get at is that our crowd did not appreciate that wonder of all the wonderful phenomena that nature presents. If it had been beer tumbling over that precipice instead of water, I think it would have touched the boys in a tender spot. Now, I may have misjudged the boys right along, but don't you know I had an idea at the time that there was not a man, among them all, who was not mentally calculating on how easy it would be to get out bottom bases from those cliffs, and how many of them were in sight. I think that is a pretty fair description of our sojourn at the falls, but I wish I could follow the crowd about that section picking up relics, crumbling rocks between their thumb and fingers, discussing the quality of the stone and its adaptability to the tombstone trade.

Nobody's clothes were badly torn while moving the procession down to Kingston, (another sleepless night for the just), where the magnificent steamer which was hired to drag our party down the St. Lawrence river to Montreal, lay chained to her dock, while the magnificent stretch of undulating, non-phosphorescent, but at the time highly elated, waters danced and glim-



mered, bathed in the glancing light borrowed as it were from the rays of the setting sun. (See.) All of this prattle may seem superfluous and entirely unnecessary,

but the fact is she (the journey) up to that point was monotonous, except for the facts related above and the sinking of another steamer of the same line two days later two hundred miles further down the river, which of course the same cannot conscientiously be woven into this tale. Any further details concerning time tables, sleeping car accommodations, twenty minutes and lunch stations, can be had with greater accuracy of the railroad and steamboat offices along the line of march, and no doubt samples of the coffee and sandwiches along the route. The trip down the St. Lawrence was very pleasant, especially to those who advocated no license, for the water was blue and apparently sweet, but many of us cannot honestly testify to the same. The several rapids along the river were interesting and reminded one of the animated sessions of the New England Granite Manufacturers' association meetings.

By sticking to the steamboat and permitting her officers to have their own way in the matter of navigating the ship, we were safely, to the apparent great relief of all concerned, landed in the ancient city of Montreal. Of course we visited every point of interest within her gates, more especially the churches,

where our religious inclinations seemed to direct our faltering footsteps. We shall always be thankful that there was no snow on the ground.

Next winter appearing above the horizon we thought it



# OUR SAFETY STOP HINGES FOR VAULT DOORS.

[PATENT PENDING]

Are  
the only device that will  
afford

## COMPLETE PROTECTION TO MARBLE TRIM

In the interior of Mausoleums. You cannot afford to do without them, and will find it to your advantage to call for them in your specifications.



**n**o extra charge for furnishing these hinges on doors made us.

**S**end for descriptive circular and get our lowest estimate on your work.

By our special process for preparing models, we can furnish the finest class of work in

### Bronze Tablets For Soldier's Monuments

At the lowest possible prices.  
We also make a specialty of

Battle Scene Panels and Medallions, Portraits in Bronze.

A large number of our Tablets can be seen in Chickamauga and other Battlefields.

**Paul E. Cabaret,**

Memorial and Monumental Bronze and Brass Work.  
Herring Building 669 675 Hudson Street, New York.

See Advertisement on page 604 of this issue.

# CASEY & SHERWOOD, GROTON, CONN.

Monuments, Statuary, **RED AND GRAY**  
Mausoleums and **GRANITE** ~~~~~  
Building Work in **FROM OUR QUARRIES IN MAINE.**



ROUGH STOCK IN CARGO  
AND CAR LOAD LOTS.....

Our **GRAY GRANITE** is specially adapted for Fine Carving and Statuary Work. . . . .

We make a specialty of Polished Columns and Pilasters in our **RED GRANITE.** . . . .

would be a good idea to get out of the northern latitudes as soon as possible, also away from the temptations lurking in the shadows of our own consciences, intensified of course in great degree by our surroundings. Weak points in moral construction considered, so we were borne at about half fare, with chair car extra, into the very teeth, so to speak, of the orange blossom breezes gently wafted from the Gulf of Mexico across Florida's bosom-laden groves of above-mentioned nectarine. That is the way we got down to Montpelier, Vermont; we were braced for the occasion; we knew what to expect; were we not aware of what was in waiting for us? For had not THE MONUMENTAL NEWS for months dished up to us all the delicacies of the season. Could we doubt our friend, our brother Haight? He could not have been misinformed, he had always been proved straight and true. And Bagley, too, poor Bagley; his absence cast a gloom over all, for had we not depended on him to head the procession; was not from his oily and graceful tongue to roll forth our appreciation of the exertions of Montpelier's and Barre's best people. We were almost helpless, the absence of our talented friends and backers, a sense of our utter failure as diplomats and liars, our near approach to that mighty multitude whose numbers would soon encompass our little band of pilgrims, surrounding us, as it were, like a picket fence around a country churchyard. But we were braced for the occasion.

We were much relieved when we reached Montpelier Junction to know that our degradation had been postponed for a

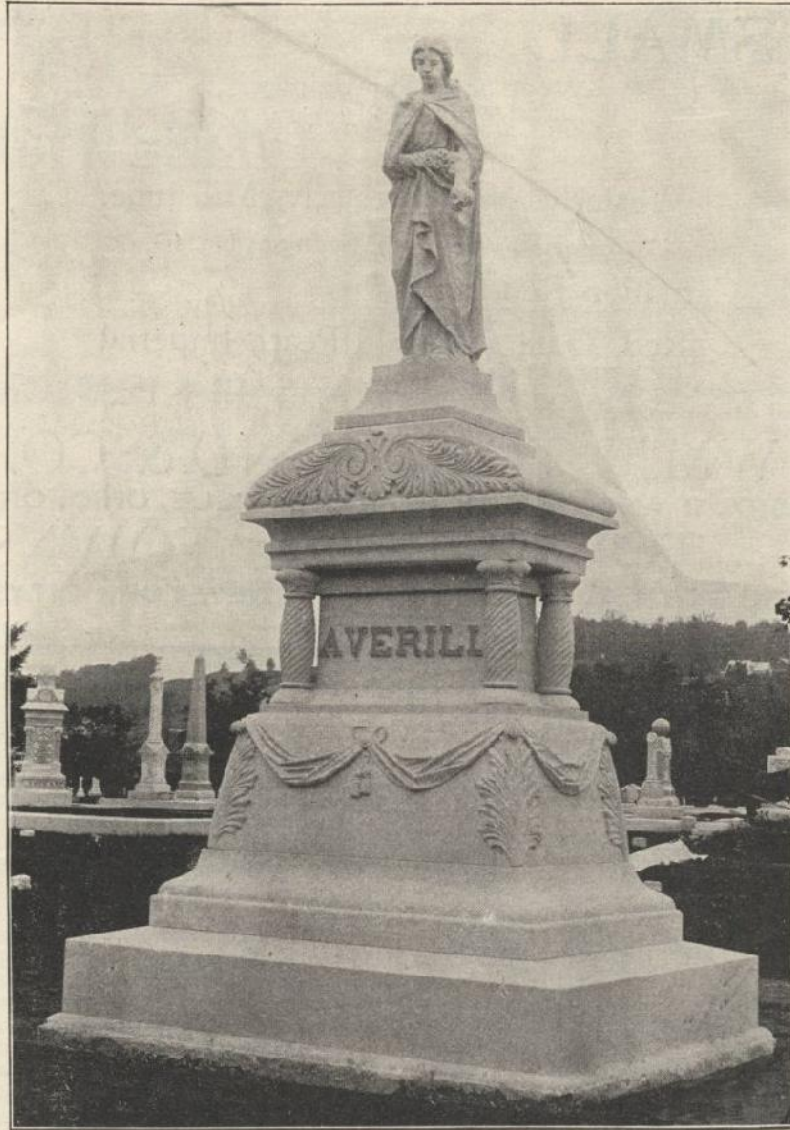


few minutes, and we would meet our executors only at the capital itself. This short respite gave us additional time to block up

our fast weakening resolutions, and to recite once again our graceful little acknowledgement while receiving the key of the great State of Vermont and the freedom of her granite shops and quarries. The only reason we did not drop dead when the train pulled into Montpelier was that we could not drop any further without knocking out the bottom of the car. [Examine preceding illustration.] There might have been a multitude waiting with outstretched arms, bards of crashing drums and cymbals of brass; there might have lined the streets of Montpelier groaning tables laden with what we craved, and granite spawls—all this might have been, and undoubtedly was. If we did not see it, it was our own fault. We acknowledge it all, for we could see nothing. The angels that bore aloft and scattered among the granite cliffs of Vermont the old songs that were sung that day also informed the same that the Michigan delegation, or some of them, or at least one of them, was not fit for publication.

The morning dawned as mornings have been in the habit of doing for some time past, and a new day was born. Huzza for Vermont, Montpelier and Barre; they are great. The same old story of man's ingratitude to man, the same weary tramp through the immense workshops and quarries, the same gathering of samples of stock, the same exchange of lies, and all is over. Those that came are sorry they did not stay at home, and those that entertained equally as sorry that they did not.

Long live the king! Boston is a great city. The run to Boston from Montpelier is a great ride. Ever since we were able to appreciate the Declaration of Independence and the motives that prompted the architects who drew the plans for it, also the people who were prominent in pushing the thing along, we are partial to Boston. If there is any one thing more than another that will open the floodgates of our innermost soul and cause us to show our weakness outwardly, it is a recital of the stirring



MANUFACTURED AND ERECTED BY

McLEOD & RUXTON of BARRE, VERMONT,

On the Family Lot of A. B. AVERILL,

DESIGN COPYRIGHTED BY H. C. KOTTIN, 1894.

# LARGE AND SMALL

Work finished promptly  
and well out of . . . . .

Quincy, Barre, Concord,

Westerly, New Westerly, Millstone.

Imported with dispatch from No. 10

Red Swede, Carnation Red,

Red Agate, Emerald Pearl, Imperial

**Low prices for good work.  
Correspond direct with**

Blue Pearl, Grey Swede.

**WM. C. TOWNSEND & CO.**

5, 7, 9 AND 11 MAIN ST., ZANESVILLE, OHIO, OR

**TOWNSEND & TOWNSEND**

138 FIFTH AVE. NEAR 19TH ST. NEW YORK CITY.

Aberdeen Office, Palmerston Road, Aberdeen, Scotland.

Studios, Carrara, Italy.

events that transpired in that historic neighborhood some time ago. To me the greatest of all the great events of those days were the heroic efforts of Mrs. Molly Pitcher when her husband had skipped, and about everybody else in her neighborhood had either (pronounced it) been killed or chased into the woods,



Standing there alone on the crest of Bunker Hill loading, and as rapidly unloading that great black mouth cannon, slaughtering the British, first right and then left, and in front until, by the brave act of one woman, the enemy were swept from the land. I have often wondered why, instead of exposing herself to the rain of British bullets that must have filled the atmosphere on that memorable day, she did not drag her cannon around behind that great granite obelisk for protection. She undoubtedly knew her own business best, and as everything has been coming our way ever since, (last Administration excepted), it would be unmanly and unjust to criticise her actions at this late date.

Our Boston experience was pleasant, indeed. Little Neck clams, boiled lobsters and baked beans were ripe when we struck the town, also plentiful. At this point it will become necessary for us to account for ourselves alone, as the contingent to a man and to a woman, after floating within the civilizing influence of culture and art, did not seem to require the protection and advice so freely offered by us, and as freely rejected by our inexperienced companions. We did not take in Quincy, Mass.; we did not wish for a repetition of the Montpelier affair. We have

strength physically and mentally, but not great capacity. Financially, we were in fine form, having borrowed money all along the road for this special occasion. Boston is a great town, and it is also a fine place. An apple can be very large and not of fine flavor; not so with Boston. You will observe that we were pleased with our surroundings, also with what we surrounded.

One of our greatest weaknesses is to move on just when we are best satisfied with present conditions. After witnessing the Templar parade from a sheltered position near the grand stand, which we enjoyed immensely, as we were sheltered by an umbrella held by an old lady who stood in front of us, and were vigorously fanned by a couple of ladies standing on either [See note in preceding chapter] side of us who seemed to be warm. We were quite comfortable and would have probably been there yet had not a policeman got onto the combination. About this time it seemed necessary that we move on, which we did in our usual style, reaching the City of New York and the Murray Hill hotel, subsequently an attic room, seven by nine, on the sixth floor, where we were supposed by the management of the hotel to be contented and happy, (a great mistake by the management). We have no complaint to offer as to our reception in the above city, (that is public). We were well treated by everybody and returned the compliment by treating everybody who would accept uncomplainingly the bite of the serpent and the sting of the adder. We could give a better description of this town if we could get hold of memoranda made on previous journeys.

New York seems to be a little closer related to the clam industry than any other city we visited along the coast. We also give her credit for the great variety of her liquor refreshments shown in the several art stores located on divers principal thoroughfares about the town. We were much pained to find that there were no granite quarries or granite shops within her gates, for we were just aching for an opportunity to give our western brethren who had not taken advantage of the cheap fares and cheaper

# YALE STYLO- CHISELRY



A revival of the ancient art of incising metals, retaining all its beauty, possibilities and individuality, but accomplished by methods developed during years of patient investigation and expensive experiment, whereby work of this kind can now be produced at a small fraction of the cost involved by any methods heretofore known.

## THE YALE & TOWNE MFG. CO.

General Offices, 280 Broadway, New York

Works, Stamford, Conn., Branford, Conn.

NEW YORK.  
PHILADELPHIA.

BOSTON.  
SAN FRANCISCO.

BUFFALO.  
CHICAGO.

entertainment of that trip, some idea of the magnitude of the granite industry in the New England states. If this idea had struck us some days previous, all might have been changed. But you never miss the lager till the keg runs dry, so also with our purses. At this stage it became necessary that we take our flight westward, as New York City does not seem to hold the monument man in as tender regard as his more western brother. There were still left two sections of the original four feet of railroad ticket, also the fret-work of our pocket-book peeping up through the shining coins, which reminded us that we were undoubtedly approaching the sunset of our journey, and that it now became necessary to hump ourselves toward fresh water if we wished to quench our thirst again. You know what happens when we attempt a thing. Well, this was no exception, and we are again beneath our fig tree, resting comfortably in the shade of the mortgage that, like a cloud lined with silver on the upper side, overspreads our possession, the effect of which is to keep us from becoming unduly hilarious and heating ourselves to an uncomfortable degree. As our stomach accustoms itself to our new surroundings we are gradually resuming our position in society and hope soon to be with you in our old form. We wish herein to make honorable mention of Mr. and Mrs. Hills, of Jackson, Mr. and Mrs. Truesdale, of Port Huron, and several other gentlemen and their wives from the west. Dishonorable mention, one Nason, from Chicago, and a dealer from Illinois, whose name we have happily forgotten. Unmentionable, one Cartwright, from Detroit.

*O. E. Cartwright.*

Mr. William H. Gaylord will erect a soldier's monument on the village green at South Hadley, Mass. a gift to the town. It will be in all about nineteen feet high, and will have Quincy Granite bases and pedestal and be surmounted by a 6 feet figure of a soldier cut from Westerly, R. I., granite.

## ≡Correspondence.≡

### The "Agent" Question Continued.

PHILADELPHIA, PA., August 19, 1895.

*Editor Monumental News:—*

DEAR SIR:—I have read with considerable interest the discussion going on through your paper in regard to the wisdom of employing agents in our business, etc. I can not see how all dealers and manufacturers could possibly agree on a single plan of action, or conduct in pursuit thereof, in view of the large differences in the conditions and surroundings that must necessarily exist between us, owing to the respective locations in which we find ourselves and the class of patrons with which we have to deal.

As between the quarryman or manufacturer of large monumental or other work, with all the latest improved machinery and perfect facilities and large capital, and the retail dealer or one who manufactures in a small way with small capital, I consider the agent almost indispensable, because he brings to one's door the very latest in designs, etc., and can fill ones every want and need, and is always loaded to the muzzle with trade news. I have found them to be interesting, and generally honorable and gentlemanly fellows, and I always hail their coming to me whether I wish to place any orders with them or not. But as between the retail dealer and the final purchaser, I consider them an abominable nuisance, and an injury in the long run to the dealer who employs them.

Without going into detail, or quoting any part of his letter, I desire to go on record as most heartily and emphatically endorsing the sentiments contained in Mr. Frank A. Cardoni's letter in your July number. I congratulate him, that after his

**Series No. 2.****Original and Practical Designs.****A collection of designs costing \$150 or more**

to be executed by hand, at a minimum cost.

**23 Designs** of popular and saleable styles retailing for less than \$500 **For \$5.00**

on 20 separate sheets, 14x21, with book of sizes (3 to each job) and wholesale and retail prices in four popular granites.

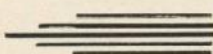
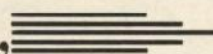
**Expressage paid when cash is sent with order.**

The cheapest and most practical Designs ever issued for the trade in general as evidenced by the many unsolicited testimonials received.

**Series No. 1.****22 Designs** With Sizes and **Prices \$5.00****Only a few sets of this** **choice Series left.****Series 1 and 2 ordered to be sent to the same address at one time \$8.00.**

Photographs for the trade.

My collection of photographs is constantly increasing and now contains about 700 views of all descriptions of Monumental Work. Sample books will be sent upon application to responsible parties to make a selection provided expressage will be paid both ways and books returned promptly. Special hand made designs furnished at reasonable rates.


**Chas. H. Gall,**


1027 Graceland Ave., Chicago, Ill.

many years of experience,—and I have no doubt he has adopted all the improvements and methods of working stone that have presented themselves,—he should still stick to the one, and good rule of disposing of his wares. It is the only dignified and I might say honest rule, and one from which, in my 25 years' experience, I have never deviated.

But I think Mr. Cardoni will be willing with me to throw the mantle of charity over the conduct of Mr. D. M. Jones of Columbus, Kansas, for having violated what we consider the only good rule. I can easily conceive the necessity for him "to drum for trade," in a territory, where his predecessors succeeded in selling in four months in 1884, four little slabs, amounting to \$42 00; where they found the class of patrons that were liberal enough, or able, to squander on an average \$10.50 each to mark the last resting place of their departed "Dear ones, where in a radius of ten miles of said shop, there was sold in the same time, \$2,000 worth of work by agents of other concerns." Mr. Jones says somewhat flippantly: "That Mr. Cardoni's method of doing business would not get a man a "Corn bread living now." One need not be a very profound scholar in the mathematics, to imagine what kind of a living these two young men "and other concerns" could have made on \$2,042 worth of sales in four months, in a circle of territory the diameter of which was twenty miles, and of which Columbus, Kansas, was the central point

But nothing daunted, Mr. Jones assumed the armor, and without "experience as an agent," without "gift or aptness for that line of work," or "knowledge of the marble or any other kind of trade," he takes the field and metaphorically mopped up that part of the earth included in his territory, for they, the others, ceased to get orders.

In view of the above honest confession of his want of knowledge, etc., I would not have been surprised at his declaration, that: "In the light of fierce competition, the use of pneumatic

tools, etc.," the marble trade has ceased to be a "craft, art or profession, and is now only a business," were it not for his concluding remarks in which he claims now to have some "pride in his artistic taste and mechanical ability." But I presume these latter trifling considerations are overcome by his love for "the dollars that are in it." I am glad that there are still some men in our business who regard our calling as an "art and a profession," and that with the introduction of improved machinery and tools, and the inventions and discoveries of new and improved methods of conquering or subduing nature, as it were, it is still worth while to endeavor to attain a loftier and more exalted position in the world of Science and the Arts, and not be classed with the dealer in tan bark, raw hides, or pig iron.

*Charles F. Schroeder.*

DALTON, GA, Sept. 9, 1895.

*Editor Monumental News.*

DEAR SIR:—Permit me through your publication to say a few words for the benefit of the Southern marble and granite dealers.

In traveling over, and coming in competition with the agents and dealers of Kentucky, Tennessee, Alabama and Georgia, I find that competition is so close that it is forcing a class of work on the consumer that should make any decent dealer blush to behold. For example, not long since a Georgia gentleman (?) furnished a monument some fifty miles from his shop, set in cemetery, made of No. 2 Rutland marble, No. 1433 Vermont Marble Co. design, and 5 feet high. You will see from the list price that this job properly finished is listed at \$77 and he only got \$85 from the consumer. What could he expect as a profit? But judging from the class of work furnished by him with others, they make a profit. This class of work would disgust and make you as an honest man ashamed of your business. I for one would

# VERY SIGNIFICANT

We think, is the fact that our September Sales are over 50 per cent greater than for any previous September, and it seems to prove our statement in this space a month ago, that our designs this fall outdid all of our former efforts, and to show that the largest and best dealers are fully aware that it is our work from our designs, that makes them money, and they buy accordingly.

Place your orders now for '96, and make early delivery in the spring sure. It will pay to buy it all from our salesmen. No one else can show you designs with the selling power in them, that ours have.

## W. M. WATTLES & CO.

ROCHESTER, N. Y.

be delighted to meet with the dealers of the above named states in a Union, and see if we can't make some improvements, be friends and establish prices, and furnish first class work. We would all profit by such a union, be happier, and the people would be furnished with a class of work that would be elevating to our business. Can't we do this? If not why not?

*H. P. Colvard.*

The Atlanta exposition offers an opportunity to bring about an association of Southern dealers for the betterment of trade conditions. Doubtless many of the dealers in the South who visit the exhibition, or who propose to do so, would probably make their visit on a given date if arrangements for a meeting of marble dealers could be made. The MONUMENTAL NEWS would be pleased to be the medium for expressions from its Southern readers on this important matter.

### Foundations.

SALISBURY, CONN., August 19, 1895.

*Editor Monumental News.*

DEAR SIR:—The July number contained an article on foundations, to which I take liberty of adding some further suggestions. Our cemetery in this place is in gravel and experience has shown that the best foundation here is made as represented in the illustration herewith, Fig. A.

Dig down at least 6 feet and get good flat stone, not necessarily quarried stone, but none are too good; lay large flat stone on bottom of the pit and build upon them dry, but closely and well laid, locking the stone on each corner of each layer so that it is all bound together and would stand firm without any carth around it. When within 2 feet of top of ground begin to use cement,—1 of cement to 3 of sand is about right,—and use enough to make it all solid as one stone from the top.

Now the advantage over work cemented all the way down is that frost will follow down no further than it is solid. The 2 ft. solid is protection against water getting into the foundation be-

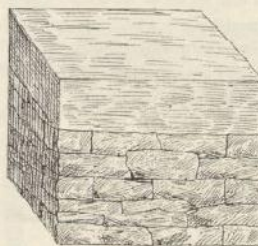


FIG. A.

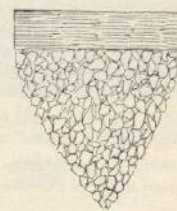


FIG. B.

low it, and if any should do so, it being warmer than at the surface, it will drain down, and there being no sand in the bottom to hold it, it will work away so that frost will not affect it and being built firm it will remain so.

In clay soil it is better to cement lower, or even clear down but there should be no dumping in of cobble stone, and then pouring in grout, when all depends on strength of cement instead of the laying of the stone for a permanent job. Where is the monument likely to stand 50 years from today that depends wholly on the round sides of cobble stones held together by some foreign substance?

Fig. B, shows the foundation of a granite headstone I was asked to right up as the party said. It had been up 2 years. I soon found that I must take it down, and so dug it out. One single cobble stone was as low as the bottom of the coffin, and



S. A. M. 35%.

# S. A. M.

Sells This Figure Five  
Feet High For \$110 F. O. B. Cars  
New York.

Of course you never heard of such a price. Middle men don't do **Business for Pleasure**. I save you their profit on all Italian work. A pleasure to quote you on anything.

**Statuary is my Specialty.**

— G. A. MacFarland, —  
Carrara, Italy.

New York Office, 874 Broadway.

# S. A. M.

dry cobble stones were dumped in and widened out as shown on sketch. About 4 inches of mortar work was laid on top so that the man could say he had made it the right length, breadth, and thickness.

Now if the buyer is a skin I have but little sympathy for him, but we all have customers who are willing to pay straight prices for straight work, and we want to give it to them. In the same cemetery I have twice had to bridge over the head of a coffin box and build foundations partly over it, owing to lack of room and stupidity of grave diggers. All the above suggestions I make as advocating the necessity, the absolute necessity, of thoroughness in foundations. We, the trade, suffer by every stone that goes out of line. Yours truly,

C. W. Adams.



Shafer Bros. of Battle Creek, Mich., closed the contract last month for a mausoleum to be built at a cost of \$15,000.

H. C. Moody with F. P. Bagley & Co., Chicago, favored the MONUMENTAL NEWS office with a visit last month.

Charles G. Willison is now located at Mansfield, O., where he is engaged with E. M. Wolff & Co. in the capacity of general manager.

Otto Schuman of Portland, Ore., has recently put up a 40 ton Quincy granite shaft monument in his city for a late prominent citizen.

C. S. Woods of Worcester, N. Y., was in Chicago last month en route to Taylorville, Ill., to visit a brother who is in the marble business there.

The Adams Marble Co., of North Adams, Mass., are about to erect a building 85 by 43 feet for storage and other purposes. This suggests prosperity.

A special to the Chattanooga Times reports a general revival of business at Luttrell, Tenn., the Republic Marble Company doing an excellent business.

The Metropolitan Marble Co., of New York will erect a plant at Watertown, N. Y., to cost, it is stated \$150,000, which will find employment for some sixty men.

Worden Brothers of Rochester and Buffalo, N. Y., are experiencing a decided improvement in business. They report having some good contracts on hand.

Westville, Conn., Sept. 9, 1895.

E. C. Willison, Dear Sir: Your 1895 Design Book is a gem. It is full of salable monuments and that is what we want. The designs are certainly the work of an artist and speak for themselves. Yours,

T. B. Robertson.

Statuary to please critical customers, Burton Preston.

Eight photos of statuary free. S. A. MacFarland, 874 Broadway, New York.

**Works of Art** out of Italian Marble imported with dispatch. Secure our prices. Wm. C. Townsend & Co. or Townsend & Townsend.

The Defender holds the cup and the New York Granite Co. will hold your trade after the first trial order. New York Granite Co., 67 W. 23rd St., New York.

Wolff & Co. are the sole owners and have copyrighted the latest and finest model of Memory, created by Maud Humphrey. Ask for a Litho of it at Mansfield, O., or Barre, Vt.



# MARR & GORDON, . . .

BARRE, VT.

Fine monumental and cemetery work of all kinds from the best  
BARRE GRANITE.

Quarries, Cutting  
and Polishing Plants

Supplied with all the latest improvements for executing  
work in the best possible manner. Our aim is to  
produce the highest grade of work at  
reasonable prices. We manufacture en-  
tirely for the trade and solicit the  
patronage of dealers who are  
looking for the best stock  
and best work in  
Barre Granite.



BARRE, VT.

We are always glad to receive newspapers containing bits of  
news about our subscribers, but it is important that the items be  
plainly marked or they will be overlooked.

Wm. H. Miller, architect, Ithaca, N. Y., has recently let  
the contract for a mausoleum to be erected in that city. The  
building will be of St. Lawrence marble and will cost \$10,000.

W. E. Hussey, for many years with Jones Brothers, is the  
latest of the travelling salesmen to embark in business. Mr.  
Hussey has taken an interest with Mackie & Sons at Barre, Vt.,  
where his many friends will wish him every success.

The Vermont Marble Co., Rutland, Vt., has secured the  
contract for furnishing the exterior marble work for Amusement  
Hall, the new building at the U. S. Soldier's Home in Washing-  
ton, D. C. The work is to be completed by April 1, 1896.

J. E. Harrison & Son, of Adrian, Mich., has been doing  
quite a historic job recently. This was in repairing and relet-  
tering what is claimed to be the first soldier's monument erect-  
ed in the United States, that at Tipton, Mich., July 4th 1865.

**Secure Our Prices** on all Granites and Marbles. Wm.  
C. Townsend & Co. or Townsend & Townsend.

Lowell, Mass., Sept. 10, 1895

E. C. Willison, Dear Sir:—We take pleasure in saying that  
we consider your 1895 Design Book, of which we have a copy,  
one of the best, if not the best ever printed; and well worth the  
price. We feel confident that it will help us to a large number  
of sales.

Yours truly, Andrews & Wheeler.

"Goods well bought are half sold." Send for our stock  
sheets of finished work ready for immediate shipment. It is  
like picking up money. New York Granite Co., 67 W. 23rd St.  
New York.

**S. A. M.**, advertises a bargain on page 632.

They all said Wolff & Co's Celluloid designs were great, and  
from the many complimentary letters received from the trade,  
their card designs must be greater. Ask for a sample.

## Georgia Marble

We are busy, and a busy man is the fellow to  
trade with.

Do you meet delay in getting your orders fill-  
ed? If so try us. Remember we are on the  
ground and select your orders from the largest  
stock in the south.

You get the best and you get it quick. In  
dark stock we supply the choicest. We are  
now having a run on fine Gray Creole, even in  
color, there is nothing in the market handsomer.

Try an order of our fine gray. Write us for  
estimates on finished work it will pay you.

GEORGIA MARBLE FINISHING WORKS  
CANTON, GA.



## Bedford Monumental Works.

Wholesale  
Dealers in

Statuary, Rustic  
and Rockfaced  
Monuments,  
Markers, Vases,  
Settees, Turned  
Work, Bases,  
Sawed and  
Dimension  
Stone Etc. Etc.

We make a specialty of

### RUSTIC MONUMENTS

which we guarantee to  
be superior in finish  
to anything produced  
in Bedford Stone.

Fine Paris Panel Designs  
\$2.00 per dozen. Send  
your tracings for esti-  
mates.

Lock Box 465,  
Bedford, - - Ind.

## POINTS ON GRANITE

... NO. 38 ...

Experience is said to be a dear school but a valuable one. We have had thirteen years of it in the granite business, and think we have learned a thing or two on the subject. Let us build some of your work and demonstrate our ability to do it satisfactorily.

## Jones Brothers,

MAIN OFFICE, 53 and 55 Kilby St., BOSTON, MASS.

Western Office: Tacoma Building, Chicago, Ill.

Foreign Office: Palmerston Road, Aberdeen, Scotland.

Quarry and Works: Barre, Vt.

George R. Watkins was "at Home" during the Knights Templar Conclave in Boston and welcomed the visitors at Cook & Watkins' offices. Mr. Watkins is one of the veteran wholesale travelling men and says he begins to feel as though he had served sufficient time in that capacity.

J. S. Smith, for some time past with E. C. Willison at Boston, has been given the management of Mr. Willison's Chicago branch. This gives Mr. Orla Willison an opportunity to resume his work on the road where he feels much more at home. Orla has a host of friends among the dealers.

Some very neat work has been put up by Richard Selwood of Fort Plain, N. Y., this season; one of especial note being a pedestal of Barre granite surmounted by a portrait statue in marble of a little girl 9 years of age. The statue is cut at Carrara, Italy, and is said to be an excellent likeness.

Burton Preston resided in Aberdeen several years and shipped many thousand monuments to the United States. Prices right, work all right, write him.

**S. A. M.** Art Statuary Book is the original one. Other firms sell it for five dollars, ask his price.

Olean, July 25, 1865.

E. C. Willison, Dear Sir:—Enclose check for \$6.00. The Design book was received in good shape and we consider it the most practical in the market. Please send us three more at once. Very truly yours,  
Foley Bros.

**Reasonable Prices** quoted on Italian monuments and statues. W. C. Townsend and Townsend & Townsend.

E. M. Wolff, of the firm of Wolff & Co., Mansfield, O. and Barre, Vt., has just designed an Obelisk Monument which bids fair to out- rival any similar design of recent years. You should see it.

Dealers will never get Dun Raven over the quality of our work and material. If you haven't joined we extend you a hearty welcome. New York Granite Co., 67 West 23rd Street New York.

*From our regular correspondent.*

### Barre Letter.

We had designed to devote a large part of our letter this month to the excursionists from Michigan, and other western points, who favored Barre with their presence on the 23d and 24th of last month; but, as we noticed they were keen observers, and as we understand there were some ready-writers among them, we have concluded to allow them to tell their own story in relation to what they saw and experienced during their brief visit in our New England city and to the adjacent quarries. We will only say, that if those who came are a sample of the granite dealers from their section of the country, we shall hope to see a much larger number of them in Barre at some future time.

We are happy to be able to write that there is nothing of a discouraging nature to mention in regard to our industry during the last month. Judging from what has been seen and heard, we feel warranted in stating that everything is on the "up grade." There is an evident increase in the number of orders in the field, and the tendency is toward a greater variety in designs and a higher class of workmanship. There seems to be a growing ambition to make the resting place of the departed as attractive and beautiful as money and art can make them. Nearly every month there is a "record breaker" in regard to size, and, if this keeps on, there is no telling what the end will be. However this may be, Barre stands ready to supply anything which may be demanded in the line of monumental art.

One of the largest transactions in quarry property of recent years in Barre, was consummated recently in the purchase of the entire business of the Langdon Granite Co., by James M. Boutwell, of Montpelier. Since the purchase was made Mr. Boutwell has shown his good business judgment by becoming a member of the Barre Granite Manufacturing association. This action removes an element of discord which had long existed in the

# C. P. GILL & CO.,

Manufacturers of all kinds of

## MONUMENTAL AND CEMETERY WORK.

From the best

### Dark, Medium and Light Barre Granite.

Orders filled promptly. Work guaranteed to be first class.

Special attention given to **Squaring and Polishing Dies, Caps, and Bases,**  
**all Lettering and Carving** done with **Pneumatic Tools.**

Always get our estimates before placing orders.

MONTPELIER, VT

granite industry of Barre, and we believe it will result in good to all concerned.

Mr. J. R. Langdon, the former owner of the Langdon Granite Quarries, died suddenly at his home in Montpelier, September 20th. The death of Mr. Langdon removed a man who was for many years a conspicuous figure in railroad, granite and other industries in our state.

The Iowa Soldiers and Sailors' monument, manufactured by C. H. More & Co., of Barre, was completed this month. A telegram was received a few days ago, by Mr. More, informing him that the large and highly-carved cap-stone, weighing over thirty tons, was raised one hundred and thirteen feet and placed in position in twelve minutes. This was a remarkable achievement and speaks volumes for the wonderful powers of modern machinery and the skill of those who set the work. If we are correctly informed this is the largest stone ever placed at so great a height since the erection of the Pyramids in ancient Egypt. It is a splendid compliment to Barre granite and its manufacturer to know that the entire job has given unqualified satisfaction to those who have watched its erection with critical inspection. Not a stone was rejected, nor a chip of a noticeable size broken in any part of the set in transit or in erecting it.

During a recent trip among the friends in town we had occasion to stop at the shop of W. D. Kidder & Co., and while there our attention was called to a unique boulder monument which they had about completed for R. A. Evans & Son, of Boston, Mass., which is for their own family monument. It was 6 feet long, 4.2 high and 3 feet thick. The steck was from the dark quarry of the Vermont Granite Co., which was of unusual fine quality. Both faces were highly polished and encrusted with heavily-raised ivy vines and leaves on front and back. The ends and top were grooved and finished with pneumatic tools in a manner which gave it the appearance of a natural boulder. The



No. 844, 5-0 high.

### Italian Statues.

Imported  
Promptly.

All work guaranteed  
satisfactory.

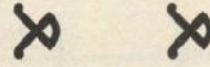
Secure  
our  
prices.

**WM. C.  
TOWNSEND,**

5, 7, 9, 11, Main St.,  
ZANESVILLE, OHIO,  
AND

**TOWNSEND & TOWNSEND,**  
138 Fifth Ave., New York City.  
Studios at Carrara, Italy.

# BARCLAY BROTHERS,



Quarry Owners, Manufacturers  
and Polishers of . . . .

## BARRE GRANITE.

We own and operate **Light and Dark** quarries that are producing first-class dimension stock of any size. Our facilities for Quarrying are unsurpassed, and orders for

### Rough Stock

will receive prompt attention. Our manufacturing department is equipped with Pneumatic Tools for surfacing, carving and lettering granite. Our new surfacing machine is the latest and most valuable improvement ever made in granite working machinery, and gives more

### Satisfactory Results

on large surfaces than when finished by hand. Our Column Cutting Lathes and Polishing Lathes are the largest in Barre, and our polishing mill is equipped with thirteen polishing machines. *We have every convenience for handling LARGE WORK.*

CAPS, DIES, Etc., Polished for the Trade.

**BARRE, VERMONT.**

imitation was the best we have ever seen. We understand the idea originated with Mr. Evans, who set a twelve ton monument of similar workmanship in Massachusetts recently. This style of work will be in demand when its novelty and beauty become known. Though the advertisement of Kidder & Co., in the MONUMENTAL NEWS, is up-side-down, we beg to assure those interested that they will find their work *right-side-up*.

The R. C. Bowen Granite Co., who have been located in Montpelier for the past eight years, have recently moved from their old quarters into a new suite of offices in the Whitcomb block. This block has just been completed and their offices consist of four rooms, which have been especially fitted up for them. The president of the company has a large front room, 19 feet square, finished in oak throughout, with handsome mantle and open fire-place. Next comes the stenographers and book-keepers' room; next the general office. In the rear is a large room, 20x25 feet, which will be used exclusively for a drafting room.

Mr. Bowen informed us that the No. 4 dark blue Barre granite is in great demand, and that they use it exclusively in their orders for polished work. They report many large contracts on hand and the future outlook encouraging.

The Vermont Granite Co. have a large number of fine monuments, of various sizes and designs, under way, and are well supplied with orders in their light and dark quarries. The class of work turned out by this firm, and the quality of their stock, is so well known to the granite trade that no words of praise are necessary from the writer.

Mr. W. E. Hussey, who for the past five or six years has been traveling salesman for Jones Bros., has entered into partnership with Mackie & Sons, of Barre. The firm name will be Mackie, Hussey & Co.

Mr. William Marr, of the firm of Marr & Gordon, sailed

for Scotland on Thursday last and expects to be absent two months. The firm of Marr & Gordon employ one hundred and fifty men at their shops and quarries. Lack of shop room prevents them from employing more cutters.

Mr. J. P. Corskie informed me that he had at present more orders on his books and more cutters at work than he had had before in two years.

The large and beautiful round spire monument, surmounted by elaborate carved cap and statue, manufactured by the Railway Granite Co., of Barre, and described in a former issue of the MONUMENTAL NEWS, was erected in the Troy cemetery recently, and we are informed that their customer is highly pleased with material and workmanship.

Mr. Seward W. Jones, of Boston, was in Barre this week.

Mr. F. W. Stanyan, Supt., of the Barre R. R., recently returned from a months vacation, spent in Block Island. On listening to the *fabulous* stories which Mr. Stanyan tells of his marvelous success in fishing while there, we could not but feel that an excellent granite salesman was spoilt when he went into the railroad business. E. M. T.

*From our regular correspondent.*

**QUINCY, MASS.**

The early fall finds business in a more satisfactory condition than it has been for some time past, and it is apparent that the improvement that has been noticeable in other lines of business has at last made itself appreciable in the monument business sufficient to affect the manufacturers. No very large work has been reported, but a good run of the average class seems to be most in evidence and in a majority of cases this is the kind of work that yields the most profit.

This word "profit" is said to be in danger of becoming obso-



TO THE TRADE;

I am now being equipped with the latest improvements for finishing in the **best** possible manner. Carving, lettering and tracing by **Pneumatic Tools.**

I aim to ship the class of work that gives satisfaction to all concerned. I handle only the best grades of stock, give strict personal attention to business and guarantee all work to be of best material and workmanship.

Good Stock. Good work, prompt shipments and fair prices. Address for Estimates

**S. Henry Barnicoat,**

QUINCY, MASS.

lete, at least among granite manufacturers. Prices have been hammered down so fine that a profit has come to be a thing of the past, and how to restore it is becoming a very serious question. Just who is to blame for this undesirable condition of affairs is a debatable question, but its solution is not so important as how to induce the several interests involved to resort to such measures as will bring about a reform in present methods of doing business. It is better by far for any locality to have a reputation for getting good prices for its manufactures than it is to be known as the place where low prices prevail. One commands respect, the other does not. Manufacturers have not been slow in recognizing this principle in many branches of trade and acting on it have established a patronage that is not subject to the disturbing conditions of every day trade. There may be a suggestion here worthy of consideration.

In filling their contract for the monuments to be erected by the state of Illinois in the National Military Park at Chickamauga, Tenn., the Mitchell Granite Company made a record that not only deserves mention, but one that has seldom, if ever, been equalled. The contract called for 30 monuments of similar dimensions, which were as follows: base 7'6" X 4'4" X 1'6", with 9" wash, and die 6'4" X 3'2" X 3'0", three sides and top quarry face, the word Illinois cut in large raised and polished letters across front bevel, top of die and front of die polished and inscribed. Within five weeks of the time the order was placed the entire shipment, aggregating 285 tons, was on the cars. Considering that nearly a week was lost in getting things in readiness to begin actual cutting the feat was an extraordinary one. This company has considerable work on hand at the present time.

Swingle & Falconer have a manufacturing plant that is a model of compactness in point of arrangement and completeness in modern equipment. Their polishing mill and engine house is a substantial structure in the fitting up of which they have

**BURTON  
PRESTON.**



**GRANITE and  
STATUARY.**



BARRE,  
VERMONT.

ABERDEEN,  
SCOTLAND.

MANSFIELD,  
OHIO.

The only wholesale Dealer in the United States who has had experience at Carrara and Aberdeen.

# E. C. WILLISON, 110 Boylston St Boston. ABERDEEN, SO. QUINCY, MONTPELIER.

Ask for our Stock  
Sheets of Finished Monuments, Tablets, etc.

We manufacture from the best grades of Quincy, Barre, Westerly, New Westerly and all N. E. granites. We import all grades of granite known to the trade and respectfully resquest your tracings for estimates. 1895 Design Book just completed, \$6.00 per copy.

## Ryegate Granite Works Co.

SOUTH RYEGATE, VERMONT-

Quarry Owners and Manufacturers of

RYEGATE, STANDARD AND BARRE GRANTE.

### Facilities.

Unlimited Water Power.  
McDonald Stone Cutting Machine  
Power Derricks, Turned Lathes.  
Most Improved Polishing  
Machinery. Artistic Models

### Specialties.

Platforms, Steps, Columns,  
Polished or Hammered. Round  
Rail for Cemetery Enclosures, Statuary,  
Mausoleums, Building Fronts,  
Rough Stock.

Before placing your orders for any above kinds of granite work, write us for prices.

## New York Granite Company,

67 West 23rd St. NEW YORK,

### LIFTING DOGS.

No. 1. Capacity, 5 tons from 2.10 to 8 feet wide \$35.00. No. 2, Capacity, 2 tons from 6 inches to 3 feet wide, \$35.00. No. 3, Capacity, 1 ton from 4 inches to 2 feet wide, \$25.00. Special sizes to order.

spared no expense. Power is furnished by a 100 H. P. boiler and a 70 H. P. Corliss engine. Four polishing wheels and two pendulams are kept busy most of the time. The handling of heavy stone, which is always an expensive feature in this business, has been reduced to a minimum here by one of Whitcomb Brothers' travelling cranes which moves the stone from one part of the mill to another. This crane is operated from the floor of the mill by a system of endless ropes and as a labor saving device has no equal. Another crane runs the entire length of the yard adjoining the cutting sheds where twenty-five men are at work, several of them using the pneumatic tools. Probably no concern in Quincy cuts a greater variety of granite than do Swingle & Falconer. It goes without saying that there is always plenty of Quincy and Barre under the hammer, but in addition thereto may be seen Chester, Millstone Point, Westerly and the product of other quarries, and they have just made arrangements to manufacture the output of the Oak Hill quarries at Belfast, Me.

At the sheds of Angelo Malnati may be seen some very artistic carved work in Westerly granite. Mr. Malnati has a number of patrons who have long placed their best work with him, knowing that it would be carefully executed. A massive sarcophagus shipped by him last month had a base 10'0" x 5'3" x 1'6", and a richly carved and moulded cap. He is working two gangs and among the orders on hand is one for an ~~an~~ monument to stand 8 feet high.

The constantly changing exhibit of monumental work in front of Craig & Richards Granite Co.'s office shows in some measure the extent of their business in stock work. They carry an endless variety of monuments in the principal New England and foreign granites and employ a large force of men, getting out work that will sell. Their judicious method of advertising their stock work keeps them in touch with the trade all over the country. They are cutting some heavy work just now, one monument upon which they are engaged has a base 10' x 8' and a die that will weigh nearly 20 tons. The monument to be erected by popular subscription to Harry McGlennen the recently deceased newspaper man, will be cut by this firm. It will cost about \$5,000.

A new derrick, one of the best in town, has been put up by Badger Brothers at their quarry. The mast is an Oregon pine stick 85 feet long, to which is attached a 75 foot boom. It has a capacity of from 40 to 50 tons. They are shipping quite a lot of grout from the quarry for grade crossings. A good run of orders for an average class of monuments has kept the cutting and polishing shops fairly busy.

McDonnell Brothers say they have had a good year and McDonnell & Cook are working more men now than at any time during the summer, with orders enough ahead to keep them going for some time to come.

T. F. Mannix has kept forty men employed right through the year and if present signs do not fail him he will continue

# HOPKINS & HUNTINGTON,

Manufacturers of



MONUMENTS

AND GENERAL

CEMETERY WORK.

First Class Work Guaranteed. Write for Prices.

BARRE, VT.

to keep them busy till cold weather.

Milne & Chalmers have completed and set up in the Waltham, Mass., cemetery the handsome canopy monument for O. C. Sheppard of that city. It is a very striking memorial. It stands 20 feet in height with an 8 ft. base. The four columns supporting the canopy are of red Scotch, while the pedestals are of Barre. The dark Quincy stone and light Barre are blended harmoniously throughout the remainder of the job.

H. W. Beattie of Quincy has completed an 8 ft. figure of St. John for Thomas & Miller. It is highly commended for its bold treatment. The drapery and fine features of the figure are well brought out.

*From our regular correspondent.*

Concord, N. H.

It is a hopeful sign when manufacturers admit that they have been injuring business by putting out an inferior quality of work, realize the disastrous effect it has had upon their trade and begin to talk about doing better work and demanding better prices. This is believed to be the prevailing sentiment in Concord today and if the manufacturers will only stand together in this matter, they can in a little while restore their ever popular granite to the position it should occupy in the trade. Cheap granite work like most other cheap commodities does not possess those qualities most essential to success. If our manufacturers will use the best stone they can buy and put good honest work on it, they will soon realize that they are on the right road.

There are a number of quarries now in operation, and barring the New England Granite Co., the amount of business being done is considered fair. A large vault job has just been shipped from their works for Washington parties. The Granite Railway Co. have several vault contracts on hand and Henneberry Brothers & Co. are also at work on a similar piece of work. The latter is being cut in New Westerly granite, it will be all hammered both inside and out, the catacombs for the coffins being

## Why is Chester Granite the Best Monumental Granite Known?

1. Chester Granite is fine grained and of a bright dark blue color, free from iron and all other imperfections.
2. Chester Granite is far superior in contrast between cut and polished work, to any other known granite.
3. Chester Granite is hard and close grained, does not discolor by exposure to the atmosphere, but retains its brilliant polish, and it is always a satisfactory purchase to the owner.
4. Chester Granite surpasses all other granites for lettering. No need of paint to make letters readable.

**Chester Granite is the best granite on earth for monumental work.**

Do not experiment with cheap granite, but buy the best, and that is Chester.

We can furnish rough-stock and squared and polished work with reasonable dispatch.

Chester Granite is handled by all the leading Manufacturers of Quincy, Mass. Send for price-list. Satisfaction guaranteed.

**THE HUDSON & CHESTER GRANITE CO.**

Owners, Quarrymen and Mfr's,

— CHESTER, MASS.

**NEW YORK GRANITE CO.,****67 West 23rd St., New York.**

The proof of the pudding in this business, is price, quality and time of shipment.

The table we set will suit you. Why not give it a trial.

**HORACE WATKINS,**

WHOLESALE

**GRANITE, † MARBLE † AND † STATUARY.**

Estimates cheerfully Given.

**110 East Town St., COLUMBUS, O.**

Let Us Estimate Any American or Foreign Granite Monument you Have to Purchase.

See our beautiful Designs for Stock Monuments shown by our Salesmen. Order now for Spring and save Time and Money.

EXCLUSIVE WHOLESALERS OF Granite and Statuary. **F. S. CARY & CO.,** BARRE, VERMONT, OR ZANESVILLE, OHIO

**WE HAVE IT.**

**What Marble Dealers are Looking for**—A firm making a specialty in their line. We furnish rough and sawed bases, cemetery curb and all other work connected with the marble and granite trade. Prices cheerfully furnished and work shipped promptly.

**MATTHEWS BROS.,**Quarries and Dealers in  
Oolitic Limestone.**Ellettsville, Ind.**

placed under the floor. The structure is to be 15x11 feet on the ground and will contain some heavy stone. The roof and architecture are heavily moulded.

Thos. Fox shipped a large vault to Pennsylvania in August and is now engaged on another to go to Ohio. He has had a good run of work this season.

John Swenson has been kept busy ever since Decoration Day, he is now working fifty-five men at quarries and cutting sheds. His new quarry is being refitted with a new engine and derrick, which will give him excellent quarrying facilities.

Ola Anderson has some very nice work under the hammer and is also doing considerable business at his quarry in rough stock. Among other work noticed at Oliver Racine's was a neatly designed sarcophagus for an Ohio dealer.

*From our regular correspondent.***BALTIMORE LETTER.**

Tuesday, August 27, 1895, will long be remembered by the people of Maryland. As the anniversary of the battle of Long Island, which took place August 27, 1776, in which 400 Maryland troops immortalized themselves and saved the American army from destruction, it was celebrated by the dedication of a monument on Lookout Hill, Prospect Park, Brooklyn. The monument which is 39 feet high was illustrated and described in a previous issue of MONUMENTAL NEWS. The cost of the monument was only \$3,000 a comparatively small amount, which was raised by small subscriptions from patriotic Marylanders. The architect, Mr. Stanford White of New York, gave the design as his subscription. The usual ceremonies attended the dedication, and the efforts of the Maryland Society of the Sons of the American Revolution under whose auspices it was erected, were heartily endorsed and commended.

Among trade news may be given the following notes: Kelly & Flynn, of Baltimore, are erecting quite a number of fine monuments, among them being one for Father McCoy of the Catholic Dominion.

H. Sisson & Sons' shops are turning out some beautiful statuary monuments and their orders are plentiful and of the paying kind.

M. Gault & Son, owners of the Woodstock granite quarries, have been awarded the contract to furnish the granite for the new Court House.

Wilkinson & Neville, of Baltimore, who have been in business as a marble firm only three years, are rapidly coming to the front. They have increased their force of men on account of increase of orders; probably due to care and workmanship given their orders. They seem to have caught on.

Among the other shops things are moving, and the following firms have started in: Gerber & Kaufman, Gumack & Doelle, H. P. Rieger and W. E. Chapman.

*From our regular correspondent.***MILFORD LETTER.**

Unless all signs fail Milford will have a place in the front rank of the granite quarrying and manufacturing centres of New England at no distant day. There is an endless variety of granite to be found in the surrounding hills, but it is the finer grained varieties that are destined to make a name for the place. Seven new concerns with limitless capital have started in business since the first of the year, which with the impetus already given the granite business has had a tendency to strengthen the prices of real estate likely to be in demand for manufacturing purposes. It has often been said that if New England capitalists would invest their money at home instead of putting it into uncertain western securities they would not only reap surer returns but would benefit their respective communities. Milford affords an object lesson for possible investors. The leading concern is a stock company of local capitalists operating as the Milford Granite Co. They are working two quarries and a large manufacturing plant and are giving employment to sixty-five men, which is a good record for a concern that has been in business but little more than a year.

John Restell & Co., an Italian firm that formerly did business in Quincy, have just completed a new shed where they will manufacture Milford granite.

W. H. Young & Son, retail dealers at Troy, N. Y., quarry and manufacture most of their monumental work here.



# AGAIN IN THE MARKET.

## Oak Hill Granite.

The famous Oak Hill Granite Quarries near Belfast, Maine, are again in operation and are producing granite that for monumental purposes cannot be surpassed. It is a fine grained even textured blue, suitable for the best grades of monumental work. A spur track from the Maine Central R. R., has been built directly to the quarries.

### Rough Stock.

We are prepared to furnish the trade with rough stock in any sizes for building or monumental purposes. Our facilities for quarrying and shipping insure prompt attention to all orders.

The popularity of this granite when on the market some years ago, will be remembered by many dealers. Send for price list and estimates.

### Manufactured Work.

All of our cut work is made at the works of  
**Swingle & Falconer,**  
Quincy, Mass.

They are authorized to quote the most liberal prices on our granite, and with their improved appliances, pneumatic tools, polishing mills etc., can guarantee entire satisfaction. Write them for estimates on monumental work.

## OAK HILL GRANITE & PAVING CO.,

BELFAST, MAINE

Among the orders they have on hand is one for a monument to be erected by Russell Sage, the New York banker, to his father and mother.

Hayden Brothers are making improvements at their quarries. D. L. Daniels & Co. and other manufacturers have a fair amount of work on hand.

*From our regular correspondent.*

New London, Ct.

Business is good at the quarries and yards in this vicinity. Chas. F. Stoll is still shipping grout on his government contract. This material is being used for foundations around lighthouses and as Mr. Stoll has a contract for seven or eight thousand tons it will enable him to clean his quarries up in pretty good shape. He has good demand for rough stock with orders enough ahead to run his present force for some time.

Casey & Sherwood are doing well at their Maine quarries this year. The granite, of which there are two varieties, is transported by sailing vessels to their works in Groton, where they operate cutting sheds, polishing mills, etc. They are doing a fine class of monumental work with their light stone which very closely resembles the best grades of Rhode Island granite.

Urbana, Ill., Aug. 13, 1895.

E. C. Willson, Dear Sir—I have just received the Design Book. This is the neatest I have seen and think we will have no trouble in selling from it. Very respectfully,

C. N. Clark & Co.

Barre granite monuments, clear dark stock, well cut, highly polished, nicely jointed, Burton Preston.

Carrara Design Book, 850 designs for \$5. S. A. MacFarland, 874 Broadway, New York.

**Italian Monuments and Statues** guaranteed free of defects. W. C. Townsend and Townsend and Townsend.

The James Shaver Granite and Marble Co., of Milwaukee, Wis. have just received a handsomely finished and excellent portrait bust of Mr. Jos. Shaver, head of the above firm. It was executed in the studios of Wolff & Co.

## KAVANAGH BROS. & CO. ▼ ▼ ▼

(MANUFACTURERS AND WHOLESALE DEALERS IN)

## AND Westerly Quincy Granite

Importers of Scotch Granite and Italian Statuary. We make a specialty of Westerly Granite and Artistic Carving.

So. Quincy, Mass.

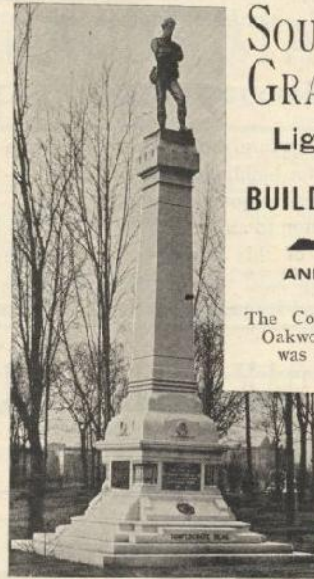
**Of Interest to Advertisers.**

It is to be regretted that publishers of trade papers should find it necessary to resort to methods for securing business that are generally discountenanced by all trade paper publishers association. For many years the monumental industry has had one paper whose publisher accepted payment for his advertisements in monumental work, and now it appears that one of our eastern contemporaries has adopted the same method, as will be seen by the following which is taken from the *Granite Producer and Builder* of Boston. The comments of the latter paper on this practice are worthy of manufacturers consideration:

Over-zealous publishers of new trade papers frequently resort to unbusinesslike methods for getting patronage, without considering the possible effect. A certain New York publication is known to be taking advertising upon the condition that if results are not entirely satisfactory to the advertiser he need not pay. It is not difficult to get contracts on such a plan even from the most conservative advertisers, and with a dozen or so such ads the smooth-talking solicitor easily induces cash advertisers to go in. This is a deception that should be brought to the attention of all possible advertisers in whatever line the scheme may be practiced. It is an injustice to the advertiser, is detrimental to legitimate publications, and in the end proves a boomerang to the publisher who gets his business in this manner. —*The Trade Press.*

We can go you one better, for we know of a certain New York publication which, failing to get cash for advertising, will accept derricks, second-hand boilers or old random monuments in exchange for space. It seems a difficult matter to convince advertisers of the disastrous effects resulting to those who lend encouragement to such a scheme. Dealers apparently do not stop to consider that when

they dispose of condemned, back-number memorials, that they will be swapped by the bargain-mongers for something with some dealer, somewhere, who will proceed to exhibit them in his yard as specimens of the work produced at Barre, Quincy, Concord or Westerly, as the case may be. Let it be noted that the boomerang is a double-header and detrimental to the advertiser and publisher alike.



**SOUTHERN  
GRANITE CO.,**  
Light Gray Granite  
FOR  
BUILDING AND  
MONUMENTAL  
AND STREET WORK.

The Confederate Monument in Oakwoods Cemetery, Chicago, was quarried and cut at our works.

QUARRIES.

LITHONIA, GA.

MAIN OFFICE,

WIGGINS BLOCK,

CINCINNATI, O.

**NEW YORK GRANITE CO.,**



67 West 23rd St.,  
New York.

All kinds of finished Monumental Work in all American and Foreign Granite.

Write for our prices.



**GRANITE POLISHERS BEWARE**

Save Money, Save  
Time, Save Labor

By using Harrison Brothers Diamond Grit, Globules, or Chilled Shot. This is the age that one must practice economy. It will pay every Granite Polisher or Sawyer in the United States to write for our samples and prices of Shot before buying elsewhere. All of our samples are taken from bags ready for shipment, we do not prepare our samples. Our material is durable, clean, and free from all dirt. The largest firms throughout the United States are using our material with the greatest possible success. Address all correspondence (to one of the firm).

**NATHAN C. HARRISON,** 161 TRENTON ST., EAST BOSTON, MASS.



**VERMONT GRANITE CO., (INCORPORATED)**

Quarriers of the Celebrated **BARRE GRANITE**

Manufacturers of Monumental and all kinds of Cemetery Work for the Trade  
Special attention given to Squaring and Polishing Dies, Caps, Pases  
etc., and shipping Unfinished Dimension Granite in  
the Rough a Specialty.

All Branches of the Work are Done in Our Own Shops.

**BARRE, VT.**

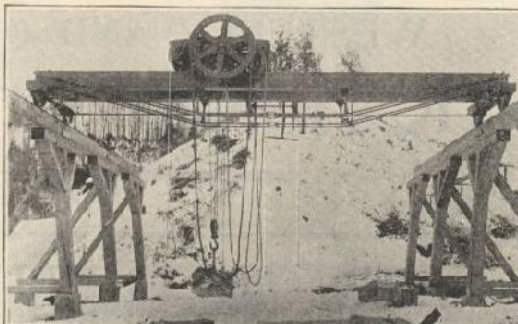
**Eclat Granite Co..**



Manufacturers of . . .  
 All Kinds of  
**MONUMENTAL**  
 WORK,  
**STATUARY**  
 ♦♦ And fine  
**CARVING** ♦♦  
 a Specialty.  
**Barre, Vt.**

**WHITCOMB BROS.,**

♦♦♦ MANUFACTURERS OF ♦♦♦



Travelling Crane.

Messrs WHITCOMB BROS.,  
 Quincy, Mass., July 12 '96.  
 Gentlemen, we note your advertisement in  
 MONUMENTAL NEWS, when you have a prosper-  
 ous customer who wants a derrick just tell them  
 to write to us, we have good things to say about  
 our derrick bought from you.  
 Respy, SWINGLE & FALCONER.

**COMMON SENSE**

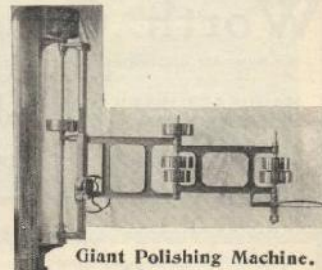
is the mainstay of most business men.  
 But he who has it knows that, while it will  
 use, it cannot take the place of knowl-  
 edge. So he puts himself. Now the best  
 way for anyone to put himself on the  
 new laws and decisions which may make  
 or break his fortune, is by reading

**BUSINESS LAW**

This is the Business Man's Law Journal.  
 It is brimful of money, time and trouble  
 saving information. Try it 3 months for  
**25 CENTS** (Your money back, if wanted,  
 after reading one number).  
 Address, BUSINESS LAW,  
 1021 OPERA HOUSE BUILDING, CHICAGO, ILL.

**Stone Working Machinery.**

Whitcomb's Soft Metal ♦♦♦♦♦  
 ♦♦♦♦♦ Polishing Machines  
**Column Cutting Lathes,**  
 Polishing Lathes, . . . . .  
 . . . . . Jenny Lind Polishing  
 Machines, Traveling  
 Cranes, Derricks, Capstans, Etc.  
 ♦♦♦♦♦ BARRE, VERMONT.



Giant Polishing Machine.

**B. C. & R. A. TILGHMAN,**

1113 to 1126 South 11th Street,  
 PHILADELPHIA, PA.

**Patent Chilled Iron Globules, or Shot.**

For Fast Sawing or Rubbing of Stone, Granite and Marble. OUR SHOT have been in regular, constant and increasing use for over twelve years, and they are now in use by all the leading firms in the United States. With the same machinery and power, they will do over three times the work of sand. We are the inventors and original manufacturers of the material, and our shot have at least double the durability of imitations now on the market. We solicit a competent trial. Speed, durability, economy and saving of saw blades. Reduction of power. Over 600 Customers. Over twelve years constant use.

**F. R. PATCH MANUFACTURING CO.,**

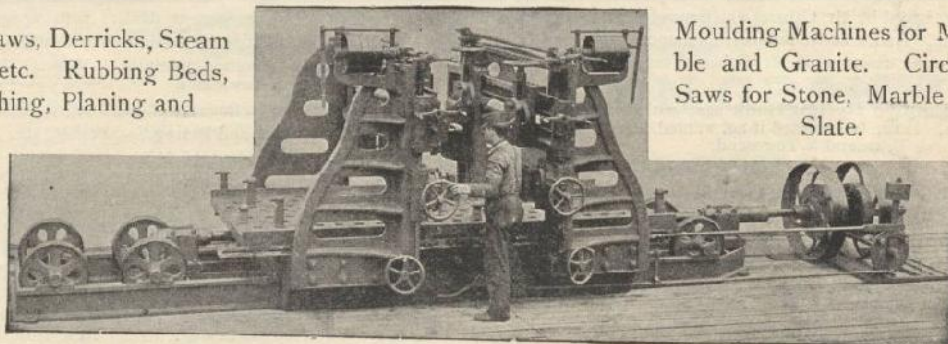
Rutland, Vt.

Stone Mill Builders and  
 Contractors.

**Stone Working Machinery a specialty.**

Gang Saws, Derricks, Steam  
 Hoists, etc. Rubbing Beds,  
 Polishing, Planing and

Moulding Machines for Mar-  
 ble and Granite. Circular  
 Saws for Stone, Marble and  
 Slate.



Correspond with us regarding anything in the way of Stone Working Machinery.

Mention the Monumental News.

# A. MALNATI.

## WESTERLY AND QUINCY GRANITES

### ARTISTIC MONUMENTS,

---

### QUINCY, MASS.

You can save your money,  
your time, and keep your  
temper and your customers  
by buying from the

**NEW YORK GRANITE CO.,**  
**67 W. 23rd St., New York.**

When you need and must  
have Monumental work and  
material of a high grade.

## Worth Considering.

We know the difficulties you experience in buying monuments. Poor Stock, Rough Cutting, Bad Joints, Poor Polishing etc.  
You can overcome these difficulties by placing your orders with

MANUFACTURERS OF

QUINCY,  
BARRE,  
WESTERLY.

**JOSS BROTHERS COMPANY,**

(INCORPORATED)

Quincy, Mass. U. S. A.  
Office and Mills.

O. S. Hammack, Sec'y.  
10 and 12 Garfield St.

IMPORTERS OF

SCOTCH,  
SWEDE,  
NORWEGIAN.

## Among Our Advertisers.

*Special business notices in this department, 25 cents a line. Readers will confer a favor upon the advertiser and the MONUMENTAL NEWS by mentioning the name of the paper when writing advertisers.*

An improvement in vault or mausoleum construction with which every contractor should be familiar is that recently made by P. E. Cabaret, a New York manufacturer of bronze doors, gates, etc. It is called a safety stop hinge and is designed to protect the interior marble work of mausoleums from injury so often sustained where the ordinary old style hinges are used. The "Safety Stop Hinges" possess many advantages that will commend themselves to contractors. They are set forth in the circulars issued by Mr. Cabaret which may be had upon application to him. An attractive full page announcement in regard to this and other features of Mr. Cabaret's bronze work will be found elsewhere in this number.

**Empire Design Book** sent with privilege of examination. It can be returned if not wanted. Wm. C. Townsend & Co. or Townsend & Townsend.

### A HANDSOME MONUMENT.

The granite manufacturers at Barre, Vt., very naturally pride themselves upon the character of the monumental work which they erect in their local cemetery. Some nicely executed work is to be seen there and one of the latest additions, the A. B. Averill monument, is illustrated on another page in this issue by McLeod & Ruxton of Barre. The design which is by the well-known draftsman H. G. Kotten, affords opportunity for some artistic carving which has been carried out. The bottom base is

8x6 feet and the surmounting statue of "Memory" 5'6". The monument is a credit to the manufacturers who can point to this example of their workmanship with justifiable pride.

**S. A. M.** makes a specialty of statuary.

The Bedford Monumental Works of Bedford, Ind., executed a fine piece of statuary for the 84th Indiana Regiment monument at Chickamauga. The statue was a portrait figure of a soldier standing at "attention" in full marching uniform. The details were carefully worked out and the work elicited many expressions of praise from those who saw it. The Bedford Monumental Works make a feature of statuary and fine carved work in Bedford stone.

All information given about Busts and Portrait Statuary, low prices. Burton Preston.

The attention of buyers of Wedge Lead is called to the announcement of J. M. Wooldridge of Elyria, O., which will be found on another page. Mr. Wooldridge has made a business of furnishing retail monument dealers with wedge lead for a number of years and his prices will be found satisfactory.

**Estimates** submitted promptly. Wm. C. Townsend & Co. or Townsend & Townsend.

New advertisers in this issue:

Oak Hill Granite and Paving Co., Belfast, Me.

D. L. Daniels, Milford, N. H.

Empire Marble Co., Gouverneur, N. Y.

S. Fontana & Co., Barre, Vt.

John M. Hazel & Co., Newport, Vt.

Bugbee & Alexander, Barre, Vt.

We were pleased to see so many of our friends who found it a pleasure and a benefit to make the trip East. We appreciate a personal call—if we cannot have that pleasure a letter with a tracing will receive our best attention. New York Granite Co., 67 W. 23rd St., New York.

**THE MILFORD GRANITE CO.**  
MILFORD, N. H.

Highest Grade of **MONUMENTAL** Granite Work.

**SELLS EVERY TIME.**

MANUFACTURERS OF THE  
The Beauty of the Milford Granite and our very high class of work is attracting the attention of every one interested in fine Monumental work.

**OUR OWN QUARRIES.**

With **Three Quarries**, all yielding the finest Granite, we are able to quote low prices on finished work or rough stock. Send for estimates to

**THE MILFORD GRANITE CO., MILFORD N. H.**

**DILLON & HALEY,**



Manufacturers of  
... **BARRE GRANITE**

**Monuments and General Cemetery WORK.**

**BARRE STREET, MONTPELIER, VT.**

Estimates cheerfully given. Correspondence Solicited.



**Walker AND Glyssen**  
Manufacturers of  
**BARRE GRANITE,**  
Monuments and General  
**Cemetery Work.**

We will furnish

**GOOD WORK**

— and —

**GOOD STOCK**

At Reasonable Prices. **Barre, Vt.**

Mention Monumental News when writing to advertisers.



**DO YOU WONDER WHY WE CAN SHIP LARGE BLOCKS SO QUICKLY?**

Look at the illustration of a small part of Virginia's youngest and greatest quarry. All our work is well cut and the stock carefully selected. Rough stock at reasonable prices.

**PETERSBURG GRANITE QUARRYING CO., PETERSBURG GRANITE CO.**

Petersburg, Va.

The Only Genuine  
**MILLSTONE, CONN., GRANITE.**  
Quarries Opened in 1830.

**HENRY GARDINER, Sole proprietor of the**

**Millstone Granite Quarries**

Successors to the  
**MILLSTONE GRANITE CO.**  
Firm of Booth Bros., Etc.,  
at Millstone.

All kinds of finished Monumental work. Rough Stock a specialty. The certificate of award at the Centennial Exhibition of 1876 on the Millstone Blue Granite, for the good color of the stone, its fine, close grain, and good polish, and the marked contrast between the polished and dressed surfaces; a character which gives unusual distinctness in ornamentation, makes it especially adapted to fine cemetery work.

P. O. Address, **MILLSTONE, CONN.** Telegraph and Telephone, **NEW LONDON, CONN.**

**CHAS. F. STOLL**

SOLE PRODUCER OF THE CELEBRATED

For the trade in the Rough, adapted for fine  
**MONUMENTAL AND STATUARY WORK.**

**GROTON GRANITE**

P. O. Address,  
**NEW LONDON, CONN.**

**A. D. Harrison,**

Manufacturer of the Celebrated

Estimates furnished on  
**BARRE GRANITE.**

**DARK BLUE CONCORD GRANITE.**

Monuments and General Cemetery Work.

Correspondence and orders will receive prompt and satisfactory attention.

**CONCORD, N. H.**

**Important to Pneumatic Tool Users.**

The American Pneumatic Tool Company, of 844 Washington St., New York City, the pioneer company in pneumatic tools, issues the following circular to the trade:

New York, Sept. 16, 1895.

DEAR SIR:

In our case against Robert C. Fisher et al, of New York, for infringement of our patent No. 364,081 by the use of the Drawbaugh (commonly called the Marx) tool, in the United States Court for the southern district of New York, Judge Wheeler presiding, a decree was made in our favor on the 12th of August.

All the points made by our able attorneys, Messrs. Kerr & Curtis of 120 Broadway, New York, were sustained by the court.

The patent is so broadly construed that not only Marx but all other tools now being offered in the market, are apparently excluded from use, excepting possibly a poor substitute in the shape of a valveless tool, and this, we claim, *infringes some of our patents*, especially our broad method patent No. 373,646,—the claim of which reads as follows:—

“The method of making a smooth surface on stone, metal, or other hard substance, by means of a stroke machine, whose action is so rapid as to be practically continuous.”

This patent was issued to our Mr. MacCoy for that which had never been accomplished, and which has now become essential in the arts. In the recent decision, moreover, Mr. MacCoy has been expressly recognized by the court as the *pioneer* in pneumatic tools. Against this infringement we will shortly proceed. There seems to be no doubt that even this valveless, man-paralyzing tool will be excluded from the field, if indeed, it does not previously die of its own inutility.

We regard the makers and sellers of these sever-infringing tools as financially irresponsible. We propose therefore, to proceed against users of these tools.

Having obtained a decision sustaining our patent No. 364,091, after a full trial on the merits in the Fisher suit, we are now entitled to proceed at once for preliminary injunction against any infringer, whether maker or user, of that patent in any U. S. Circuit Court, and it is our intention to do so whenever we find it necessary for the vindication of our rights.

If you are using an infringing tool, we extend to you, in addition to the courtesy of this notice, the opportunity to reply before we take action in the premises. Inviting your early attention, we remain,

Respectfully yours

THE AMERICAN PNEUMATIC TOOL CO.

By F. A. Marsh, Sec'y.



Headstone Designs.

These illustrations represent two of the thirty designs of headstones recently issued by the Craig & Richards Granite Co., Quincy, Mass. The designs are reproduced from hand made drawings and are printed on heavy sheets 14 x 19 inches. There are sixteen of these sheets illustrating thirty salable designs and they are being sold at \$3.50 for the set. Order a set now.



Elyria, Ohio, Sept. 11, 1895.

E. C. Willison, Dear Sir:—We cannot express our appreciation of your 1895 Design Book. It is the richest and best selection of the many that we have received. It certainly has our preference and we are glad you sent this book instead of the one we wrote for. Why don't you send a copy to each responsible dealer for inspection, only a few would hesitate to return you the price of the book. Yours truly,  
Sands & Woods.

Send for stock sheets of Italian Monuments and Statues ready for immediate shipment. W. C. Townsend & Co. or Townsend & Townsend.

American Granite, Scotch granite and Swede granite, Italian statuary, Burton Preston.

**RAILWAY GRANITE CO.**

Manufacturers of

Barre Granite - - - -  
Monuments and  
General Cemetery  
Work.

From the best Light and Dark Stock. Estimates cheerfully given.

Barre, Vt.

The Date in address on your wrapper tells when your subscription to the Monumental News expires. Renew in good season.

**ENTERPRISE GRANITE CO.,**

W. R. Dickie, Prop. Manufacturer of and Dealer in Light and Dark

**Barre Granite Monuments.**

TABLETS AND CEMETERY WORK. TERMS CASH. 30 DAYS.  
Superior Workmanship Guaranteed. Barre, Vermont.

**BURLEY & CALDER,**

MANUFACTURERS OF

**BARRE GRANITE MONUMENTS AND GENERAL CEMETERY WORK.**

BARRE, VT. ALL ORDERS PROMPTLY FILLED. A TRIAL SOLICITED.

**THE PRACTICAL GRANITE CO.**

MONTPELIER, VERMONT.

MANUFACTURERS OF

**HIGH GRADE GRANITE WORK.**

LIGHT, MEDIUM and DARK BARRE GRANITE.

ROUGH STOCK FURNISHED TO ORDER.

EXCLUSIVELY WHOLESALE. SEND FOR ESTIMATES.



CUT OF MY OWN WORK

**F. BARNICOAT.**  
**GRANITE AND STATUARY.**

QUINCY, WESTERLY. SOUHEGAN, MILLSTONE POINT GRANITE MONUMENTS. CIRCULAR WORK A SPECIALTY.

PORTRAIT FIGURES & BUSTS  
MODELLING OF EVERY DESCRIPTION  
SOLDIERS & IDEAL FIGURES IN GRANITE.

SEND FOR DESIGN SHEETS OF GRANITE STATUARY.  
QUINCY, Mass.

**West Quincy Monumental Works . . .**

**T. F. MANNEX,**

Mfr. and Dealer in Plain and Ornamental

Granite . . . . .

. . . . . Monuments

All Work Guaranteed Satisfactory

West Quincy, Mass.



**William Callahan,**

Manufacturer of

**MONUMENTAL WORK**  
**QUINCY AND OTHER GRANITE.**

From all Grades of

34 Quincy Ave., Quincy, Mass.

Send for Estimates.

**SPARGO**

MANUFACTURER OF MONUMENTS - STATUARY, and Cemetery Work of all kinds from THE Best Quincy And other Eastern Granites.

Best Stock and Work guaranteed at Lowest Prices.

W. T. SPARGO, So. Quincy, Mass.

**OLIVER RACINE,**

QUARRY OWNER AND MANUFACTURER OF

**CONCORD GRANITE, MONUMENTS, &c.,**

Cemetery Work of All Kinds.

CONCORD, N. H.

**MANET GRANITE CO.** Estimates given in all

**NEW ENGLAND GRANITES.**  
**QUINCY AND WESTERLY . . . . .**

A Specialty

Best of Stock and Workmanship Guaranteed. Send for Tracings.

SO. QUINCY, MASS.

**M. J. McLEAN**

Manufacturer of

Light and Dark

**BARRE GRANITE MONUMENTS**

And General Cemetery Work.

Correspondence Solicited.

BARRE, VT.

**Maine Granite Quarry,**

Fredericktown, Madison Co., Missouri, solicits your orders. Color: Light Pink, suitable for bases for either gray or red granite monuments. Quarry opened July 1, 1894.

**Granite Polishing**

For the Trade at the following prices. From the rough (to cut and polish) \$1.00 per superficial foot. From the point, 60 cts. per superficial foot. Extra charges on surfaces less than 5 square feet. JOHN KLAR, Westfield, Mass.

**Among our Advertisers. (Continued.)**

Among our new advertisements this month will be found that of the Empire Marble Co. of Gouverneur, N. Y., successors to the Empire State Marble Co. Mr. D. J. Whitney, president and manager of the new company, is an old and experienced worker in St. Lawrence marble, in fact he was one of the first to put that marble on the market. The company's quarries and mills are well equipped to give prompt and satisfactory attention to the wants of the trade in their line.

Aledo, Ill., Sept., 11, 1895.

E. C. Willison, Dear Sir.—We consider the 1895 edition of Art Monuments the best design book for general country trade yet issued. It contains a good variety of salable designs in cheap and medium priced monuments and tablets, also some good higher priced designs for those wishing to invest more money. We have yet to see its equal for our trade. Thanking you for your courteous treatment, we remain,

Yours truly, H. Wells.

Mr. Wirt Leland of Carrara, Italy, whose marble design book is so well known in the trade, has been visiting the American dealers during the summer. Mr. Leland is building up a very gratifying business in marble statuary for which he finds a growing demand. He expects to return to Carrara this fall.

No. 10 Red Swede, Ebony Black, Carnation Red, Grey Swede. Wm. C. Townsend & Co. or Townsend & Townsend.

Marr & Gordon, granite manufacturers at Barre, Vt., have established a western office at 153 La Salle street, Chicago. Mr. William Dunbar, an experienced granite man, is in charge of the office, who will be pleased to hear from western dealers.

**First Class Work** only. Wm. C. Townsend & Co. or Townsend & Townsend.

"Our out of town correspondence is beginning to show signs of an improvement in trade," says the New York Granite Co., wholesale dealers and importers at 67 West 23rd St., New York. "The retail dealers in and around New York were not doing much business in September, but are confidently expecting an improvement in October."

Italian statue of child three feet high \$60.00. Burton Preston.

We have ready for immediate shipment several dark Quincy tablets and headstones and a finely polished square monument with cross. Write for stock sheet. Swingle & Falconer, Quincy, Mass.

**Oak Hill Granite.**

Many Granite dealers who were in trade ten years ago, will be pleased to learn that the famous Oak Hill quarries down in Maine are once more in operation. Years ago this granite was very popular for monumental purposes, and justly so for it is a fine appearing stone, of a bluish cast, evenly mixed and adapted to all classes of such work. The Oak Hill Granite and Paving Co., of Belfast, Me. have made many improvements at the quarries and have put in a rail-road switch which greatly facilitates the shipping. Rough stock only will be furnished from the quarries, as the Company has arranged to have all of the manufacturing done by the well known firm of Swingle & Falconer, at Quincy, Mass. The plant of this concern is equipped with all the modern appliances for the manufacture of granite, and their reputation is such as to insure entire satisfaction. Swingle & Falconer have been empowered to quote the lowest prices on Oak Hill granite and there is no doubt but that this once popular granite will soon become a favorite again in the retail Monumental trade.

**An Important Decision.**

Granite manufacturers throughout the United States who are using the pneumatic tools will be interested in the decision of Judge Wheeler in the United States Circuit Court for New

**CRYSTAL BROOK GRANITE CO.,**

Quarriers and Manufacturers

of the best

**Dark Hardwick Granite.**

Good Work • Reasonable Prices • Prompt Shipment.  
Low Rates on Spring Delivery Orders.

Rough Stock . . .

HARDWICK, VT.



**F. A. Heister,**  
STATUARY.

Modeling and Carving

—FOR—

MONUMENTS and ♦♦

♦♦♦ BUILDINGS.

9 Favor St., Rochester, N. Y.



**HOFFER & CORTI,**  
SCULPTORS.  
Artistic Carving

and General Cemetery Work.

**BEST GRANITES**

in the market.

BARRE, - VERMONT.

York, regarding the patent right of the pneumatic tool for cutting granite. The American Pneumatic Tool Co. of New York claims to be the sole owner of the patent and in the decision, which was rendered last month, the court sustains their claim. The court reviews at considerable length the history of the invention and the several features embodied in the tools of other manufacturers which the court regards as infringements. Elsewhere in this issue will be found a communication from the American Pneumatic Tool Co. on the subject.

MANSFIELD, O., Sept. 20th, 1895.

Editor Monumental News:

DEAR SIR:—I note in your September issue of the MONUMENTAL NEWS, you have stated in a local that Burton Preston has retired from the partnership of Wolff & Co. I beg to call your attention to the fact that Burton Preston has at no time had any connection with me other than that of an employe, and he was discharged by me about July 31, '95, and I have placed in the general management of my business, C. G. Willison, formerly manager for E. C. Willison. Yours very truly,  
WOLFF & Co. Per E. M. Wolff.



**GOODENOUGH & SWASEY**



Manufacturers  
of  
Light and Dark  
**BARRE GRANITE**  
MONUMENTS  
and General  
CEMETERY  
WORK.

**MONTPELIER, VT.**

Correspondence Solicited.

**Trade Notes. (Continued.)**

Legner & Quaing of Cincinnati, O., are writing some fine contracts this season. Since getting the Harrison monument order they have been awarded the contract for a monument to be erected in Dayton, O., by the Collins Estate at a cost of \$6,500. Mr. Collins took the first engine out over the Cincinnati, Hamilton and Dayton Railroad.

Wm. H. Gaylord, a public spirited citizen of South Hadley, Mass., has given McGregory & Casman of Springfield a contract for a soldiers monument which he intends presenting as a gift to the town of South Hadley. The monument will consist of a pedestal of Quincy granite, surmounted by a statue of a soldier in Westerly granite. The monument will stand 19 feet in height and cost about \$3000.

C. Keim celebrated his 20th year in the marble business at Johnstown, Pa., on September 14th. Mr. Keim is an enterprising man and can point with pride to examples of his workmanship in numerous cemeteries in his own and adjacent counties. He is a liberal newspaper advertiser and does not employ agents.

Campbell & Horrigan of Pittsburg, Pa., are selling some very heavy monuments this year. An exceptionally fine piece of work just shipped to them by Jas. Newall & Co. of Westerly, R. I., has a bottom base 6'6" square and stands 18' in height. A finely modelled and carved group of figures in granite surmounts the monument.

The granite pedestal for the General Corse equestrian monument to be erected in Burlington, Ia., will be furnished by O. M. Eurus of that city. It will be of light Barre granite, all hamed. The base is 11'x7' and 9' in height. The statue will be a bronze replica of the one modelled by Carl Rohlsmith for the state soldiers monument at Des Moines.

W. F. Cook of Springfield, Mass., has the reputation of having the most attractive salesroom and office of any monument dealer in the United States. Potted plants, paintings and statuary adorn his handsome office which adjoins a well kept salesroom. A well kept establishment of this kind is not only pleasant to do business in, but is an excellent advertisement.

The contract for the rebuilding of the monument erected on the Public Square at Lawrenceburg, Tenn., in 1849, to the memory of the soldiers of the Mexican war, was awarded to J. E. Sloan & Co., of Nashville. The monument is forty feet high, with a base ten feet square and will be rebuilt out of Bedford, Ind.,

**Your Money Back** if statues are not satisfactory. W. C. Townsend and Townsend & Townsend.

**CABLE & EDWARDS**

.....MANUFACTURERS AND DEALERS IN BEST.....  
**BARRE GRANITE MONUMENTS**  
AND OTHER CEMETERY WORK.

WRITE FOR PRICES.

BARRE, VT

*As good as the best*  
**EWEN & CO.**

Manufacturers of Monumental Work in

**Red, White, Blue and Pink Westerly Granite.**

Fine Lettering and Carving a Specialty. Urns, Ballusters, Vases, Columns, Etc.,  
at Specially Low Prices. Give us a chance to figure on your work.

Westerly, R. I.



**RICHARDS & TROWBRIDGE**

MONUMENTAL  
DESIGNERS.

DESIGNS on SILK  
A SPECIALTY.

QUINCY, - MASS.

Correspondence with the  
trade solicited.

stone. The work is to be completed and rededicated October 31st.

A fatal accident occurred at Champaign, Ill., last month which resulted in the death of H. V. Dewey who was in that city erecting a monument for H. C. Hoffman & Co. of Chicago. Mr. Dewey was in the act of adjusting some ropes near the top of a 27 foot shaft which had been erected when from some inexplicable reason the shaft fell to the ground, carrying Dewey with it and instantly killing him.

M. C. Rodenberger of Waterloo, Ill., has the contract for a six catacomb vault, to be built of Georgia marble and erected in the local cemetery. The exterior dimensions of the structure are 14'3" x 10'0" x 17'0". The variety known as Cherokee marble will be used with polished columns and caps of Creole marble at either side of the entrance. The vault will have double bronze doors and promises to be one of Mr. Rodenberger's finest pieces of memorial work.

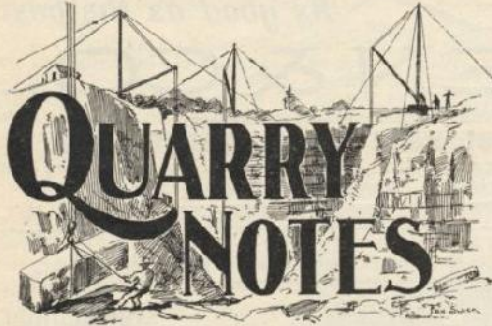
Henry B. Vandercook, president of the Grand Rapids Monument Co. at Grand Rapids, Mich., has been admitted to the legal fraternity. For some time past Mr. Vandercook has devoted his spare time to reading law and last month passed a highly creditable examination, gaining admission to the bar of the state. It is his intention to remain in the monument business for the present. Mr. Vandercook has frequently contributed to our columns and may be he will now give his co-workers in the trade some legal pointers.

**The Best Material Used** in our Italian statues and monuments. W. C. Townsend and Townsend & Townsend.

**Book of Sarcophagi**, \$3.00. Wm. C. Townsend & Co., or Townsend & Townsend.

## New York Granite Co's., 67 WEST 23RD ST. NEW YORK.

Design Book contains 15 large Lithograph Designs, 23 Line Drawings and 28 Statuary cuts. It is a 34 page book, 11 x 17 inches in size. Paper Cover, Light Weight \$1.00,-Cloth Cover, Light Weight, \$1.50. Paper Cover Heavy Weight, \$1.50,-Cloth Cover, Heavy Weight, \$2.00



A flag stone 10 ft. by 20 ft. by 16 in. thick, weighing about 26 tons was recently quarried in the stone quarry at Equinunk, N. Y., leased by Kirkpatrick Bros. of Hancock, N. Y.

Reports indicate that the dullness continues about the quarries at Ellsworth, Me.

In the month of August there were shipped from the Milford, Mass., quarries, 1076 tons of cut granite which is 272 tons more than were sent out in the corresponding time last year. Fully 400 men are now employed in the granite industry at that point.

A ledge of red sandstone has been opened up four miles northeast of Rawlins, Wyo. It is claimed to be equal to the gray sandstone which has been extensively used in Denver and Omaha.

The new corporation, recently organized, began work in the marble quarries at Dorset, Vt., with a force of 150 men, and it is expected that the number will soon be increased to 500. The company is a wealthy one and owns many large quarries in different parts of the country, and the business will be pushed for all it is worth.

Electric motors are being experimented with on gadders and channeling machines in the marble quarries at Proctor, Vt.

The Rutland *Herald* is authority for the statement that Senator Redfield Proctor has obtained a controlling interest in the Sheldon marble quarries at West Rutland. Out of 12,500 shares of the Sheldon stock Mr. Proctor now holds 12,480 shares. The Vermont Marble company for some time has held the lease of the Sheldon quarries, but has not worked them to any extent.

## EMSLIE & KING,

... MANUFACTURERS OF

MONUMENTS AND GENERAL  
CEMETERY WORK.

FROM Best Barre Granite.

Correspondence solicited.

BARRE, VT.

## STAPLES GRANITE CO.,

Manufacturers of

HIGH GRADE  
GRANITE WORK.

Light, Medium and Dark Barre Granite.

Send for Estimates.

Montpelier, Vt.



## Wm. Allan,

Successor to Troup & Allan.

Manufacturers of

... Barre Granite.

Monuments and General Cemetery Work.  
from Best Light and Dark

... Stock ...

Estimates Cheerfully Given.

BARRE, VT.



## Fraser & Broadfoot,

Manufacturers of all kinds of

MONUMENTAL WORK

... From Best ...

Light and Dark

... BARRE GRANITE.

Estimates cheerfully given.

Montpelier, Vt.

**Quarry Notes. (Continued.)**

The recently organized Massey Stone Co., at Cleveland, Ohio, is probably the largest concern of the kind in the world. They will control 700 acres of stone land in Northern Ohio and contemplate opening new quarries, developing old ones and establishing extensive plants at once.

The lack of railroad facilities, which have been the one great obstacle to the development of Colorado marble quarries, will probably be overcome before the end of the year. The Elk Mountain railroad to Marble will open up an inexhaustible bed of marble land, some of which has been sufficiently worked to establish the character and variety of the material.

Philadelphia is unquestionably taking the lead in the use of granite for wainscoting and exterior building work. The new Broad Street station of the Pennsylvania railroad contains some work of that character and a Maine granite company has a contract for 4,000 feet of polished granite for an interior base course in the new Public building in that city. The enduring nature of the material and the permanence of the polished surface gives it a value that fully counterbalances the difference in cost over other materials.

A new method of quarrying marble, an invention by George F. Clark, of Albany, N. Y., formerly of this city, was tested last month in one of the Vermont Marble company's quarries at West Rutland, says the Rutland (Vt.) Herald. The test proved satisfactory. The stone was sawed in the quarry by a twisted wire strand which was 800 feet long. A cut 65 feet long and one foot deep was made in eight hours. Mr. Clark intends to organize a company of New York men, who will put the machine on the market.

At a town meeting held at Chester, Mass., it was voted that the town buy \$7,000 worth of stock in the proposed branch railroad from the Boston & Albany line to the granite fields in Becket.

**A. ANDERSON & SONS,** Manufacturers of  
and Dealers in  
**LIGHT AND DARK BARRE GRANITE.**  
Cemetery Work of every Description.  
Correspondence with Dealers solicited.  
Do not fail to get our prices. **BARRE, VT.**  
A few stock jobs on hand. Write for designs and prices.

**FULLER, FOLEY & CO.**  
GRANITE WORK OF EVERY DESCRIPTION. Artistic Memorials  
WEST QUINCY, MASS.

**STEPHENS & REID,** Manufacturers of  
and Dealers in **BARRE GRANITE**  
Monuments, Tablets, and Cemetery Work.  
Polishing and Heavy Work a Specialty. **BARRE, VT.**

**Round Pond Granite Co.** Formerly Browne McAllister Co.  
**ROUGH GRANITE** of every Description furnished to the Trade.  
MONUMENTAL WORK A SPECIALTY.  
Estimates furnished on application. All orders promptly filled.  
Quarry and Office **ROUND POND, ME.**

**COLUMBIA GRANITE Co.** Manufacturers and dealers in **High Grade Fine Monumental Granite**  
From Souhegan, Milford and New Westerly Granite. For estimates address,  
**COLUMBIA GRANITE CO., MILFORD, N. H.**

**La Rochelle & Fanny,** Manufacturers of . . .  
Concord, Sunapee Granite, for work of every description.  
Also quarry owners of the finest grain **LIGHT and DARK CONCORD GRANITE.**  
**CONCORD N. H.**

**J. W. McDONALD,** **D. W. McDONALD,**  
**J. W. McDONALD & CO.,**  
Quarriers and Manufacturers of  
**-- Fine Monumental Work --**  
Light and Dark Barre Granite.  
Best of Stock and Workmanship Guaranteed.  
**P. O. Lock Box 97. BARRE, VT.**

**Clarihew & Gray,** . . . Manufacturers and Dealers in . . .  
**BARRE GRANITE.**  
For Monumental and Building work, being fully equipped with cutting and polishing plants and all latest improvements including pneumatic tools. We are able to compete successfully with any in the trade. We invite all dealers desiring first-class work to correspond with us. **BARRE, VT.**

**BARRE, VT.**  
We beat no drums, but we cut first-class monumental work at prices that simply say "We are in it." We use both Light and Dark Barre Stock.  
**W. D. KIDDER & CO.,**  
W. J. Kidder.  
W. D. Kidder.

**Italian Statuary**, direct from the best Studios in Italy. You can only get the best by placing your orders at \_\_\_\_\_

67 WEST 23D ST. NEW YORK.

# NEW YORK GRANITE CO.,

## MILFORD GRANITE

MONUMENTAL WORK. D. L. Daniels, Milford, N. H.

### Trade Notes. (Continued.)

Edgar Darby who has been in charge of S. A. MacFarland's New York office for several months, returned to England last month, where he will resume his connection with the London office of the same concern. Mr. Darby was very favorably impressed with the progressiveness of the American retail trade, but he did not think our dealers quite so practical as their English cousins. He was well pleased with his stay in this country and takes back with him the pleasantest of memories.

What is said to be the largest granite cross ever manufactured in Montpelier, Vt., for a private person is now nearly completed by the Capital Granite Co. It is to go to Louisville, Ky. The weight of the block in the rough from which the cross was cut was seventy tons. It is ornamented with handsome designs in scroll work. The height of the cross is twenty-one feet, length of arms six feet one inch and it is two feet nine inches square at the bottom. The plinth under the cross is seven feet eight inches square, and the bottom base nine feet square by four feet high.

The Hon. John S. Treat of Portsmouth, N. H., is believed to have the oldest monumental works in the United States. The date of the establishment of these works is not definitely known, says the *Portsmouth Times*, but Mr. Daniel Marble was in the business at the same place in 1768. He was succeeded by Noah Smith; and the grandfather (Sam'l Treat) of the present proprietor bought out Mr. Smith's interest in 1807. Thirty years after he was succeeded by his son Allen Treat, father of the present proprietor, John S. Treat. The latter, after an absence of eleven years, took the business in 1866. Mr. Treat has shipped work to New Orleans, Mobile, Chicago, Boston and as far away as the Sandwich Islands. He was elected to the state senate in 1880 on the Democratic ticket and in 1882-3 was mayor of Portsmouth. He was the first president of the Temperance Reform Club in 1876 and by his enthusiastic work won many reformers.

Wm. M. Dodd who has been connected with W. C. Townsend in the wholesale granite business at Zanesville, O. for the past ten years, has been taken into partnership by Mr. Townsend. The firm name will henceforth be W. C. Townsend & Co.

Boston was the center of attraction late in August, during the Knights Templar conclave. Probably there were never more dealers in the city at one time than on that occasion, as will be seen from the following list. The opportunity would have been an excellent one for a grand rally of marble men "for the good cause." Among those who visited the wholesalers offices were: \*Ellison Hubbell, Elbridge, N. Y. \*J. H. Anderson, Chicago, Ill. \*M. N. Hambleton, Huntington, W. Va. \*M. R. Inglehart, Rock Island, Ill. \*R. E. Farley, Sedalia, Mo. \*Maj. A. L. Clapp, Montgomery, Ala. \*J. M. Soule, Farmington, Me. \*Philo Truesdell, Port Huron, Mich. \*C. W. Hills, Jackson, Mich. \*Brinkman Bros., Lehigh, Penn. \*J. S. Treat, Portsmouth, N. H. \*Aaron Vinson, Walla Walla, Wash. \*Mr. Shumway, Springfield, Ill. \*Fred Schlingen, Madison, Wis. \*Louis Zinger, Pekin, Ill. \*Geo. L. Jones, Wilmington, Del. \*W. L. Van Gilder, Millville, N. J. \*C. Scharger & Son, Delphos, Ohio. \*E. L. Felton, Erie, Penn. \*Geo. Douglas, St. Louis, Mo. \*Thomas Donnell, Mattoon, Ill. \*Al. Snoots, Chicago, Ill. \*Dayton E. Jones, Chicago, Ill. \*H. A. Bowers, Montpelier, Vt. \*Chas. J. Hughes, Bridgeport, Conn. \*Stephen Maslen, Hartford, Conn. \*C. A. Rosebrough, St. Louis, Mo. \*W. L. Sampson, Dover, Me. \*F. V. Townsend, Columbus, Ohio. \*J. P. Hall,

## F. WOLLMERATH,

Manufacturer of

Rustic Monuments in . . . .

BEDFORD STONE.

Yards and Mills at \_\_\_\_\_

173-175 CLYBOURN PLACE,

CHICAGO.



Send Tracings for Estimates.



WHAT'S ALL RIGHT?

OUR HAND DESIGNS

of any class of work. . . . Furnished promptly, at reasonable prices. Silk Designs a specialty. Correspondence with the trade solicited.

**WHITEHEAD & RIEKERS,**  
MONUMENTAL DESIGNERS,

STUDIO:—45 West 24th Street, New York, N. Y.

Norfolk, Va. \*C. H. Gall, Chicago, Ill. \*D. J. Crowley, No. Adams, Mass. \*Geo. W. Kelley, Philadelphia, Pa. \*H. Laufer, Pittsburgh, Pa. \*Clinton W. Sherwood, New York. \*John Goss, Greens Landing, Me. \*C. E. Nason, Chicago. \*A. C. Kinney, Milford, Mass. \*Geo. E. Morrison, Biddeford, Me. \*J. J. Legner, Cincinnati, O. \*N. C. Matthews, Winchendon, Mass. \*Geo. B.



**JONES & GALE.**  
Manufacturers of  
**Barre Granite Monuments**

of all kinds, . . . .

Send for Estimates.

**MONTPELIER, VERMONT**

**LYNCH & McMAHON,**



**Dark Barre Granite**  
FINE MANUFACTURERS OF  
of every description. The standard  
our specialty. Quaries at Barre.

OFFICE AND WORKS **Montpelier, Vt.**



**LUDLOW SAYLOR - - - WIRE CO.**  
ST. LOUIS, MO.  
**CEMETERY FENCES**  
of  
**Wrought Iron and Wire.**  
Write for Catalogue.

**RED BEACH RED GRANITE**  
**BEAVER LAKE BLACK GRANITE**

We make a specialty of **ROUGH STOCK, POLISHED COLUMNS** and  
**PILASTERS, URNS, VASES, BALISTERS** and **SAMPLES.**

O. S. TARBOX, Supt.

**MAINE RED GRANITE CO., Red Beach, Me.**

**BASHAW BROTHERS,**  
Manufacturers of  
**HARDWICK GRANITE**

Estimates on all classes of  
Monumental Work.  
**HARDWICK, VT.**

**RED GRANITE**

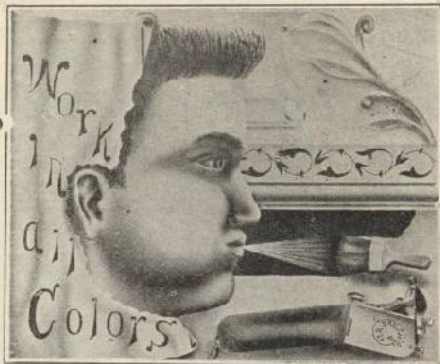
Superior to Scotch or  
Swede for Monumental  
Work.

**BRAINTREE RED GRANITE CO.,**  
Room 59, 28 State St. **BOSTON, MASS.**

**T. A. GREEN,**  
Light and Dark Hardwick and Woodbury  
Granite Monuments, Tablets and Gen-  
eral Cemetery Work.

**Box 65. HARDWICK, VT.**  
You will get my estimates by return of mail.

**E. C. FRENCH**  
Manufacturer of and Dealer in  
**MONUMENTAL WORK**  
of all kinds from the best  
**Light and Dark Barre Granite.**  
Lock Box 60. **BARRE, VT.**



**MONUMENTAL  
DESIGNS**  
MADE BY  
**Allen Bros.,**

Will secure you orders  
for Monumental  
work.

**Special Designs**

a specialty on any material  
desired.

**Indianapolis, - Ind.**  
49Thorpe Bldg.



Designs submitted for all forms of Maus-  
oleum work. Figure window, Ornamental,  
Symbolical or heraldic. Correspondence so-  
lited. Send for hand book.  
Church Furniture and Metal Work;  
Chancel Renovation; Mosaic Work for  
Churches and Residences.

**J. & R. LAMB.**  
59 Carmine St.,  
New York City.

Merrill, Lyan, Mass. E. M. Thompson, Portland, Me. J. F. Bolster, Norway, Me. \*T. W. Cole, New Bedford, Mass. \*Alfred White, Cincinnati, Ohio. \*John Milton, Gardiner, Me. O. E. Cartwright, Detroit, Mich. \*V. V. Whitney, Lancaster, N. H. \*G. W. Leighton, Deering Me. \*Everett Torrey, Boston, the only resident Sir Knight in the marble trade.  
\*Knights Templar.

**Photographs, Trade Literature, Etc., Received.**

At the Mechanics Institute Fair, San Francisco, Messrs. Jones Bros. & Co., had an exhibit consisting of a very neatly arranged collection of marble and granite statue, urn and sarcophagus monuments, markers, etc. The exhibit was arranged with potted palms and similar plants interspersed, and from the photograph received was excellently lighted and placed.

Several interesting photographs have been received from Cartwright Bros., Detroit, Mich. One shows a shaft 34'-4" x 3'-0 x 3'-0 on its way to Woodmere cemetery, another the James F. Joy canopy monument, one of the finest granite memorials in the country.

Mr. Ernest Bizzozero of West Quincy, Mass., who recently returned from his former home in Milan, Italy, has favored the **MONUMENTAL NEWS** with photographs and other views of the "Monumental Cemetery" in that city.

E. T. Vielt of Charleston, S. C., sends us a photograph of another fine example of his monumental work, which will find a place among our illustrations in the very near future.

The New York Granite Co., of 67 West 23rd st. New York has issued a new book of designs for the retail granite trade. Sarcophagi, square monuments, tablets and statuary in great variety of designs are illustrated by half tone engravings and etchings. The volume is 10½ x 16½ inches, printed on heavy coated paper and neatly bound in cloth and boards. The monument designs are mainly of medium cost work and will be appreciated by dealers in that class of monuments.

Coldwater, Mich., Sept. 9, 1895.

E. C. Wilson, Dear Sir:—We will say your 1895 Design Book is perfectly elegant to say the least and well worth the money.  
Ewing & Porter.

### Trade Changes, Etc.

#### NEW FIRMS.

Hart-Godfrey Marble Co. has been incorporated at Knoxville, Tenn.

B. A. French has recently started in the marble and granite business at Pawtucket, R. I.

Guchoe & Walsh is a new firm at Rutland, Vt.

E. C. Stillwell is a new dealer in Humeston, Iowa.

David J. Murphy has recently started in business at Chicopee, Mass.

Leslie M. Ramsay has recently opened a shop at Milford, N. H.

Everett Lockwood is a new dealer at Glen Cove, N. Y.

James Julian is a new dealer at Salina, Kans.

B. A. Owens has recently commenced business at Terre Haute, Ind.

John C. Siegrist has gone into business at Dubuque, Ia.

Joseph H. Peter has recently started in business for himself at Louisville, Ky.

The Cook & Genung Co. is a new monumental firm at Newark, N. J.

John Bohan & Co. have recently opened a shop at Rochester, N. Y.

Rudolph Geissler, New York City, has opened a branch office at 540 Wabash Ave., Chicago.

S. W. Shoemaker has opened a marble shop at Atwood, Ill.

John A. Finn, Albert J. Ferguson and J. J. Breen of Lewiston, have purchased the granite and marble business of H.S. Decker at Auburn, Me. They will continue the business at the old stand under the name of the Auburn Monumental Works.

James Van Billiard has recently started in the marble business at Easton, Pa.

J. K. Haas has purchased the Shamokin Marble Works at Shamokin, Pa., and B. E. Adams' marble yard, and will hereafter conduct the above enterprises.

D. J. Linchan will soon open a new shop at Elmwood, N. Y.

Archie & Son is the name of a new firm at Waterloo, Wis.

Herb Wallar is a new dealer at Albion, Ill.

Waupaca County Marble Works has been incorporated at Waupaca, Wis., capital \$150,000.

The Schilling Company, with a capital stock of \$10,000, was incorporated recently at Albany, N. Y.

J. J. Van Dresser has again started in the monumental business at Franklin, Pa.

#### DISSOLVED.

Mitlar Marble and Granite Co., San Francisco, Cal.

Herman Leyda & Co., Burlington, Ia.  
The firm of E. Bizzozero & B. Mcreti,

W. Quincy, Mass., has dissolved partnership. E. Bizzozero will continue the business.

Cairns & McLean, Charlottetown, P. E. I.

Marrion & Worden Brothers Rochester, N. Y. and Buffalo, N. Y., have dissolved partnership. Mr. Marrion retires from the business.

Solveston & Hynne, La Crosse, Wis., have dissolved.

#### SUCCESSORS.

E. Hathaway succeeds George C. Richards at Middleboro, Mass.

T. H. Wheeler succeeds J. B. & T. H. Wheeler at Delta, Ohio.

F. E. Brill, proprietor of the Mt. Jackson Marble Works, succeeds W. M. Kronk, Mt. Jackson, Va.

R. E. K. Rothfritz succeeds Genung & Co. at Asbury Park, N. J.

S. L. Sands succeeds the firm of Sands & Woodriddle, Elyria, Ohio.

Wm. G. Grimes succeeds the firm of Bowman & Davison at Portsmouth, Ohio. George De Beaumont, Abilene, Kans., has gone out of business.

Bowman & Davison are closing out at Portsmouth, Ohio.

M. A. Maywood who succeeds C. A. Maywood, Dixon, Ill., is removing the plant to Ottumwa, Iowa.

Clayton & Schwenk are entirely out of business at Newark, N. J.

Howard A. Cann, of Clarks Hill, has purchased a half interest in W. D. Paul's marble works at Frankfort, Ind.

W. W. Pike succeeds Tillotson & Pike at Morrisville, Vt.

The interest of C. C. Dornan in the marble business of Meisenhelder, Dornan & Co., Marietta, Ohio, has been purchased by Louis A. Leonhart. The name of the firm will hereafter be Meisenhelder & Leonhart.

E. J. Potter succeeds the firm of Potter & Phelps, Sidney, N. Y.

Lincoln & Rudy succeed A. K. Huber at Lititz, Pa.

Mcyers & Co. succeed M. L. Everest as proprietors of the Clayton Marble Works, Clayton, N. Y.

#### REMOVALS.

A. S. Davis has removed his plant from Laurel, Md., to Newport News, Va.

Henry Kattman will remove his plant from Crothersville to Brownstown, Ind.

The Buckeye Marble Mills, Knoxville, Tenn., have been destroyed by fire, loss \$20,000.

#### SOLD OUT.

R. D. Walker, Savannah, Ga.

Genung & Co., Ashbury Park, N. Y., sold their plant to Robert Rothfritz last month and the following week made an assignment. Liabilities \$13,000, assets nominal.

#### ASSIGNED.

Johnson & May, South Bend, Ind.  
Chas. Z. Rankin, Laconia, N. H.  
Genung & Co., Asbury Park, N. J.  
Stannard & Wilson, Sisseton, S. D.  
Knoxville Marble & Stone Co., Knoxville, Tenn.



C. T. Stephenson, Knoxville, Tenn.

#### DECEASED.

Wm. Evans, Hamilton, Ill.

Wm. Holmes, Barry, Ill.

**Flower Vases**


Send for illustrated catalogue.

Grave Guard.  
Vault Gates, . . .  
Fountains.


Reservoir Vase  
Mention this Paper.

**CEMETERY FENCES**

LAWN FURNITURE.



IRON SETTEES

**E. T. BARNUM.**            **Detroit, Mich.**

## Wrought Iron Fences,

### CEMETERY ENTRANCE GATES,

Tubular Fences and Rails, Park Chairs and Settees. Vases, Fire Guards, Vault Doors, Etc.

**J. E. BOLLES & CO.,**

Designers and Mfr's.,

**DETROIT, MICH.**



Send for catalogue No. 18.  
Mention this Paper.

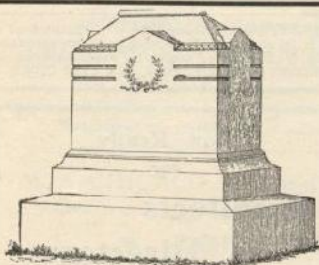
# JOHN SWENSON,

## SOLE PRODUCER OF THE CELEBRATED DARK BLUE CONCORD GRANITE

For Statues and Fine Work it has no Superior.  
Also Manufacturer of Fine Hammered and Rock-Faced Monuments, Mausoleums, Tombs, Coping, etc.

Correspondence Solicited.

WEST CONCORD, N.H.



**LESLIE B. HENDERSON,**  
(Successor to)  
**HENDERSON & DICKIE,**  
Manufacturers and Dealers in Light and Dark  
**Barre Granite Monuments,**  
Tablets and General Cemetery Work.  
Drapery and Carving done in an Artistic manner.  
BARRE, VT.

**A. J. YOUNG**  
MANUFACTURER OF  
*General - Monumental - Work*  
From Best Light and Dark  
**BARRE - GRANITE**  
EAST BARRE, VT.

**JOHN BENZIE,** Manufacturer and  
... Dealer in the best  
**LIGHT and DARK BARRE GRANITE MONUMENTS,**  
AND GENERAL CEMETERY WORK.  
Quarrier's Pneumatic Tools.  
Estimates Cheerfully Given. \* **BARRE, VT.**

**Field & Wild,** QUARRYMEN,  
Dark Blue Quincy Granite  
**Rough Stock, Monumental and Cemetery Work.**  
The Superior Qualities of our granite have  
long been recognized by the trade. **QUINCY, MASS**

MONUMENTS FROM THE FAMOUS HARDWICK STOCK.  
Should be ordered direct from  
**FRANKLIN HARDWICK & SONS.**  
—DEALERS IN—  
**ROUGH, HAMMERED AND POLISHED GRANITE.**  
**QUINCY, MASS.**

**McINTOSH AND SON,**  
Manufacturers of all kinds of  
**MONUMENTAL WORK.**  
From all Grades of Quincy and other Granites.  
Estimates Cheerfully Given. Columbia St., S. Quincy, Mass.

**J. Aja & Co.** | **W. T. Kenerson & Co.**  
Manufacturers of Light and Dark  
Barre Granite Monuments and Gen-  
eral Cemetery Work. **BARRE, VT.**  
Manufacturers of Barre Granite Mon-  
uments and Cemetery Work.  
**BARRE, VT.**

**Jas. K. Milne & Co.**  
Manufacturers of Barre Granite Monu-  
ments and Cemetery Work.  
**BARRE, VT.**

**CANNON BROS.,**  
Manufacturers of all kinds of  
BARRE GRANITE . . .  
MONUMENTAL WORK.  
Correspondence solicited.  
**NORTHFIELD, VT.**

**A. BERNASCONI & CO.,** Manufacturers of and  
Wholesale Dealers in  
**GRANITES AND ITALIAN MARBLE.**  
Barre, Quincy, Concord, Hardwick, Ryegate, Calais, Red Swede,  
Red Scotch, Italian Statuary, Granite Statuary.  
Artistic Carving and Modeling \* **WEST BERLIN, VT.**  
Monuments and Cemetery Work.

**CARLE & WALKER,**  
Manufacturers of and Dealers in **LIGHT and DARK**  
**BARRE GRANITE**  
MONUMENTS, TABLETS and General Cemetery Work.  
Fine Draped Work a Specialty. . . . **BARRE, VT.**

**Business Chances, For Sale, Etc.**

Advertisements inserted in this column so cents a line each insertion; six words to a line. Copy should be received not later than the 20th.

**FOR SALE.**

**WANTED**—Somebody to help me open a granite quarry, the stock of which has been tested, specimens sent out and over twenty-five thousand dollars worth of work offered. Little capital required as orders are cash on delivery. Granite tools or engine and boiler will be accepted as capital. Address with stamp Granite, St. Louis, Mo.

**PARTNER WANTED**—In marble and granite business in a city of 3000 population. No shop nearer than 20 miles. Good and prosperous country surrounding. Sales this year up to date \$4000, all cash. Small sum will buy half interest. I want a man that can sell on road or do shop work. No preference. Address P. X. in care of MONUMENTAL NEWS.

**FOR SALE.**

**A GRANITE YARD**—In a city of 15,000 doing a business of \$25,000 a year, 25 miles from New York, good territory, rich farming community, 8 ton derricks at yard and depot, 25 horse power engine, 30 horse power boiler, Polishing Machines Jerry Lind and Vertical, Trucks, heavy and light, Rough Stock and finished work on hand, business established 30 years, will be sold with machinery or same can be rented with yard, will be sold low to a quick buyer, reasons for selling party has other business. Address E. B. Koen, Middletown, N. Y.

**A RARE BUSINESS OPPORTUNITY.**  
**A DEALER** of 30 years successful business experience in marble, stone and granite, in a thriving city, in Southern Indiana, with population of 85,000, who owns a valuable plant equipped with a new traveling derrick and switch in the yard connected with all the railroads entering the city from all parts of the United States and located in the heart of the city, wishes to quit the retail business.

Wants a practical granite worker, with capital and push, to establish a finishing works to the wholesale trade, in a granite discovered while prospecting in the south.

This granite is inexhaustive in quantity and superior in quality and finish to the famous Westerly, E. I., granite, the quarry of which is well developed and in good working order. A good paying business can readily be established. Arrangements can be made with quarry owners to have the granite delivered in yards at less than \$1 a cubic foot. Granite working tools and machinery will be accepted as part payment of stock.

Party with business intentions may apply for full particulars and sample of granite in rough to H. X. c. o. MONUMENTAL NEWS.

**Wanted—Situations or Help.**

There will be a charge of 25c. for every advertisement in this department when replies are addressed in care of the MONUMENTAL NEWS. Advertisements will be inserted FREE only when replies are addressed direct to the advertiser.

**WANTED**—Situation by good general workman, can cut, polish, letter and carve; can also cut bases. Sober and reliable. Address Marble Cutter, Grand Island, Neb.

**WANTED**—A pushing salesman of ability to sell marble and granite to the trade. Address, giving references and experience, Manufacturer, care of MONUMENTAL NEWS.

**WANTED**—Several pushing marble and granite salesmen for good territory. We manufacture our own work. Address New Dunning Marble and Granite Co., 1991-1993-1995, Peach St., Erie, Pa.

**WANTED**—A general workman in granite and marble, wants situation as foreman or manager, understands working granite from rough to boxing, also finishing marble. Have had experience in some of the best shops in the United States. Fine letterer, sober. Permanent position more desirable than large salary with good reliable firm. Address Granite and Marble, Box 1156, Gouverneur, N. Y.

**WANTED**—A position in one of the Southern states by a reliable marble and granite worker of 20 years experience. Address C. W. 421 Marshall Ave., St. Paul, Minn.

**WANTED**—A good marble cutter, must be young and strictly sober, able to do some carving and good lettering. Must be a hustler. To such a one a steady job winter and summer will be given. State wages and give reference. A first class future prospect. Address Pocomoke Marble Works, Pocomoke City, Md.

**WANTED**—Salesman, must be thoroughly familiar with the wholesale marble and granite business. None need apply unless they have recognized exceptional ability. Address with references and state salary. Alex Fraser & Co., Mansfield, Ohio.

**POSITION WANTED**—By a first class stone cutter, can give estimates on cut stone buildings, understands plans; 11 years experience as foreman and estimator. 28 years old. Best of references given. Address Box 370, Bloomington, Indiana.

**SITUATION WANTED**—By a marble cutter, letterer and tracer. Speaks English, German and French. Married. Address J. J. Kiesler, Belleville, Wis.

**WANTED**—An experienced salesman for retail marble and granite business, to work on salary and commission. We can give a good man the best chance to sell w. r. Territory, Erie County. The Schilling Co., 115 Seneca St., Buffalo, N. Y.

**WANTED**—An experienced salesman for retail granite and marble business; must be willing to go on his own merits. Best territory, with an established business of 30 years. Only men that can sell work need apply to The Schilling Co., Albany, N. Y.

**SITUATION WANTED**—By a good general workman, can letter and trace granite, will work at low wages from now until spring. Address L. No. 16, North Union St., Aurora, Ill.

**WANTED**—Situation by young man in marble shop, one year experience. Any reasonable offer accepted. Address C. J. Hedstrom, 221 Park Ave., Kansas City, Mo.

**WANTED**—Salesman in retail marble and granite trade in a good territory in Central Ohio. Address Granite, M., care of MONUMENTAL NEWS.

**WANTED**—Designer, able to use air-brush. State age, salary expected, and give reference. Address Triebel & Sons, Peoria, Ill.

**MARBLE CUTTER**, carver and letterer wishes situation. Address S. J. Patton, 7th and Franklin str., Waco, Texas.

**WANTED**—First class salesman to sell blue marble at wholesale on commission in Ohio, Michigan, Wisconsin, Minnesota and western states. H., MONUMENTAL NEWS.

**WANTED**—Situation as superintendent of granite quarry. Can give estimates from plans. Practical man, 15 years experience. Address G. C., 1629 Ave. B, New York City, N. Y.

Now Ready  
THE  
**Architects' Directory**  
For 1895-96

Containing a list of the Architects in the United States and Canada, classified by States and towns, with the architectural associations to which they belong indicated against each name, prepared with the greatest care to secure accuracy both in names and location; together with a classified index of prominent Dealers and Manufacturers of Building Materials and Appliances.

Manufacturers and Dealers cannot afford to be without one.

Handsomely bound; price, postpaid, \$1.

WM. T. COMSTOCK, Publisher,  
23 Warren St., New York.

# BIG INTEREST!

Is what everyone gets who invests in a subscription to the MONUMENTAL NEWS.

Think of getting TWELVE copies of such a Trade Magazine as this for the sum of one dollar. No progressive man would think of getting along without it

And very few do.

**Subscription.**

Regular Edition, of which this is a sample \$1. Or the International Edition with 60 designs for \$2.50 a year.