

THE MONUMENTAL NEWS

AN ILLUSTRATED MONTHLY MONUMENTAL
ART JOURNAL.

R. J. HAIGHT, EDITOR AND PUBLISHER.

SUBSCRIPTION:
REGULAR EDITION in United States and Canada \$1.00 a year; Foreign, \$1.00
INTERNATIONAL EDITION, \$2.50; Foreign, \$3.00.

Address all Communications and Remittances to
THE MONUMENTAL NEWS,
384 DEARBORN ST. : : CHICAGO.

Entered at the Chicago P. O. as Second-Class Matter.

VOL. 6. CHICAGO, MAY 1893. No. 5

CONTENTS.

| | | | |
|---|---------|---|---------|
| Editorial..... | 219-220 | *The Rhodes Memorial Chapel, Pine Grove Cemetery, Lynn, Mass..... | 231 |
| The Monuments of Wash- ington..... | 220-221 | Our Illustrations..... | 232 |
| Sculpture..... | 222-223 | Trade Notes..... | 233-234 |
| Paris Correspondence..... | 224 | Recent Legal Decisions..... | 235 |
| *The Channing Statue..... | 225 | *A Progressive Western Monu- mental Dealer..... | 236 |
| The Audubon Monument..... | 225 | To Iowa Dealers..... | 237 |
| An Irish Memorial..... | 225 | A Statue with a History..... | 239 |
| *World's Fair Notes..... | 226-227 | Trade News Among our Ad- vertisers..... | 240-241 |
| Proposed Monuments..... | 228 | Quincy Correspondence..... | 244 |
| *A Comparison of Puritan and Grecian Monumental Art..... | 229 | Barre Correspondence..... | 246 |
| Greenwood Cemetery..... | 230 | *Illustrated. | |
| The Congressional Cemetery at Washington..... | 231 | | |

IN line with the suggestions made by the MONUMENTAL NEWS, a bill has been introduced in the Illinois legislature providing that the Park Commissioners purchase the Art Palace at the World's Fair and convert it into a museum as a permanent feature of the park after the fair. It is proposed that an admission of 25 and 10 cents be charged and that the building shall be free two days a week and always free to children in actual attendance at the public schools.

SCULPTOR J. Q. A. WARD has just finished a statue of Roscoe Conkling which some of his friends ordered and which they propose to place in a corner of Union Square. The park board has not consented to this location, saying that the corners of this park were reserved for the greatest Americans, statues of two of whom have already been placed therein, and that Conkling, while an eminent citizen, does not quite size up to these distinguished citizens.

THE legislature of Ohio has made an appropriation of \$90,000 for the erection of suitable monuments to Ohio troops on the battle ground of Chickamagua. This was a most important battlefield and the general government has purchased the ground with a view to making of it a National Park. If other States shall follow the liberal example set by Ohio, it is not unlikely, with all the natural beauty which the locality affords, that Chickamagua will become even a greater resort than Gettysburg.

THE mayor of Cincinnati is desirous of having the equestrian statue of Gen. "Tippecanoe" Harrison set up in front of the new city hall instead of in one of the parks, as has been proposed. We feel like cautioning whoever has the decision of this matter, to move slowly and avoid making the error, made in some other cities, of erecting statues near public buildings, simply because more conspicuous there, and without any regard to fitness of location or harmony of surroundings. It is well to look at the matter (and the monument) from all sides before permanently locating it in any place.

THE recent exclusion from Central Park, of a statue of ex-President Arthur, on the ground of its lack of artistic merits, calls attention anew to the value of an art commission in connection with a board of park commissioners. Whatever may be the merits in this instance, an evident care on the part of the art commission, to admit no more statuary to the park, unless of a high order, is manifest, and their example is worthy of emulation in other cities. If statues are to be erected in our parks without discrimination, these beauty spots will soon be peopled with bronze and marble nobodies, more or less artistically modeled according to their generosity in making provision therefore in the last will and testament, or the success met with in soliciting funds by those who urge the claim of the deceased for public recognition.

THE "Metropolitan Art Club" is the name of a new organization in New York, composed mainly of painters, architects and patrons of art. The object of the club is to stimulate the artistic sense in various ways, as, for example, in the erection of public statues and in securing more artistic results in the decorative architecture of public buildings. The club will make a special effort for better mural decorations, both paintings and sculptures, and will supply these without cost to the city, inviting competition among artists and architects, rewarding successful effort and giving commissions for important works to the most distinguished artists. The influence of such an organization can not fail of being valuable by creating a love for the beautiful, among the masses, and hence a demand for better architecture and more and better sculpture. Much of this demand will be made upon the monumental trade, and it will be met in a spirit which shall evince an appreciation of its importance.

SHORTLY after ground was first broken at Jackson Park for the Columbian Exposition, a beautiful lithograph, in colors, was published representing the buildings and grounds as they were to appear when completed. It was an enchanting picture. Colored lithographs are usually exaggerations. Moreover, it is so much easier to represent a mammoth enterprise on paper than to make it an accomplished fact. In this case there was a barren marsh upon which it was proposed to build in two years' time a city of palaces the like of which the world had never seen. It seemed an impossibility. Now that the transformation has taken place and the rubbish of construction has been cleared away, we look at the colored picture and compare it with the reality only to find that "the half had not been told." The actual scene presented at Jackson Park today surpasses the extravagant promises of the colored lithograph. This we believe is due to the fact that in the solution of all stupendous problems which have presented themselves to those entrusted with the execution of this great undertaking, ideal art has not once been lost sight of. A chance was here for the fancies of artists—whether architects, sculptors, decorators or landscape artists—to have full play; and the result is a superb creation, which, though ephemeral, will leave a glorious memory and an influence that will be of inestimable benefit for long years to come.

* * *

It is this influence, we believe, that will constitute the greatest good that is to come from the lavish expenditure of millions and the unstinted efforts of legislatures, of societies, and of individuals to make the exposition successful. Along with the great educational results which are to accrue from the display of exhibits, will come something even greater and more lasting and it will manifest itself in the refinement of public taste for the better things in art. It will manifest itself in architecture and may dominate the evolution of the long-hoped-for, yet unrealized American "school;" it will manifest itself in public parks and cemeteries; its influence will be felt in our homes—in short, will quicken the artistic faculty wherever it exists and however dormant. In this way it will do more towards stimulating the growth of art in America than a host of millionaires could do by filling their parlors and galleries with paintings and sculptures to be kept concealed from the public gaze. Wealthy patrons of art are not to be discouraged. Their "commissions" to the struggling artist are necessarily essential. But the future of American art, if we are ever to have a distinctively national art, will depend upon the education and refinement of the public taste more than upon anything else. And we do not think we are too confident in our belief that the Columbian Exposition, conceived and builded on an art basis, will exert a most potent influence in that direction.

Statuary and Monuments at Washington.

A WELL-KNOWN sculptor made the statement in a recent lecture that there was more public statuary in the city of Washington than in all other cities of the Union combined. Extravagant as the statement



ment seems, it is probably true, for besides the large number of monuments to heroes, seen in various parts of the city, and the figures in and around the capitol and other public buildings, and the large number of statues in Statuary Hall,—there are numerous

pieces of sculpture—upwards of four hundred statues and busts, it is said, in the Corcoran Art Gallery. The most conspicuous monument at the capital of course, is the Washington obelisk, which is the highest stone structure in the world. Its total height is 555 feet 4 inches, being 55½ feet square at the base and 34 feet 5 inches at the 500 foot line. Its walls are 15 feet thick at the base and 18 inches at the top. The interior is decorated with tablets from all the States and territories, from foreign governments, and from various organizations, the tablets being of material quarried in the several localities represented. At a height of 250 feet from the base are eight windows which may be reached both by elevator and by a spiral stair-case. The latter consists of fifty flights of eighteen steps each. The corner stone of this monument was laid by President Polk in 1848, and the cap-stone was placed in position in 1884. It is 250 feet higher than the dome of the capitol building and 334 feet higher than Bunker Hill monument. The lower portion is constructed of blue granite, faced with Maryland marble, the upper portion being entirely of white marble. It is said that there are 18,000 blocks of marble two feet in thickness, in the structure. The cost of this monument was nearly a million and a half dollars.

There are at least six equestrian statues in Washington. One of the most interesting of these is that of *Gen. Andrew Jackson which stands in Lafayette square opposite the White House, duplicates of which are in Jackson square, New Orleans, and at Nashville, Tenn. This statue was set up in 1853, and is the work of Clark Mills who modeled, cast and set it up, receiving \$50,000 for his contract. Congress also voted him the metal from which it was cast, from guns which General Jackson had captured at New Orleans. This was the first equestrian statue put up in the United States, and

*Illustrated in INTERNATIONAL EDITION for March.

the first bronze statue of any kind cast here. These two facts and the wonderful feat of equipoise which the sculptor accomplished, make it an object of interest. There has been some talk of moving it from its present position, as being inartistic. It has some inartistic features but is by no means as bad as the Washington equestrian statue by the same sculptor, and moreover should be allowed to stand as a specimen of American art back in the "fifties."

An artisan who assisted Clark Mills in erecting the statue has recently given some facts regarding it which are of interest. "The horse," he says, "does not stand directly upon the surface of the pedestal, as it appears to do. The pedestal itself is of blue stone firmly cemented together and the white marble that one sees on the outside is only a thin veneering cemented on. On top of this foundation there is a solid plate of brass weighing more than two tons. It is eight feet long, three feet wide and three inches thick, and to this plate the legs of the horse are fastened directly, so that it is not merely the balancing of the horse that keeps it up in position. The rough stone top was placed on afterward and was merely a stone mason's task. The legs are of solid iron as far up as the thigh and are only coated with a thin sheet of brass, like a stocking. The irons inside the legs were forged at the navy yard. From the brass plate there runs up a small brass pedestal several inches in height that was cast solid with the plate. Into this the hoofs are planted and then a rivet or key was driven in to make it all solid. The rough stone was built on afterward up to the height of this pedestal, making it all flush with the hoofs."

It would be hard to conceive of a sculptor violating more principals of anatomy or art than Mills has done in the equestrian Washington which was placed in what is known as the Washington Circle in 1860. Yet it is said that the artist himself esteemed this work very highly and that in his advanced years he used to take his friends to see it and declare that he did not believe a better Washington could be made. Mills received \$50,000 for this statue also. It has a breezy look which some call "spirited," and it is said the portrait is good, being taken from the Houdon cast.

An equestrian statue of *Gen. Winfield Scott stands in the circle formed by the intersection of 16th and N streets and Massachusetts and Rhode Island avenues. The monument is a magnificent work of art, costing \$45,000, which was appropriated by congress. It was unveiled in 1874. The figure representing the old general on his famous war horse stands upon a stone pedestal the blocks of which are the largest ever quarried in this country. The sculptor was H. K. Brown.

The equestrian statue of *General McPherson which stands in McPherson square was modelled by Louis T. Rebisso. The fund for this monument was started by

General Logan, and several thousand dollars were raised, though not enough. Congress came to the rescue and appropriated \$25,000 for the pedestal. The statue was unveiled in October 1876.

The bronze equestrian statue of †Gen. Nathaniel Greene of Revolutionary fame which was unveiled on Stanton Place in 1877, was voted by the Continental Congress. It is colossal in size, cost \$50,000, and is an attractive statue.

But the handsomest equestrian statue in Washington, if not the whole country, is that of †Major-General George H. Thomas, which adorns Thomas' Circle. It was erected by the army of the Cumberland at a cost of \$50,000, in 1879, congress furnishing the pedestal. Both horse and rider in this statue have a pose which speaks of dignity and grace, and at the same time a certain alertness which gives it life and vigor. It is said that the portrait of Thomas here is faultless. J. Q. A. Ward was the author of this splendid statue.

Where Columbus' Remains Were Buried.

In these Columbian days when so much is being heard of the great admiral and his various homes in Spain, comparatively few persons know where his remains actually repose. He died at Valladolid in May, 1506, and his body filled an unmarked grave in that town for seven years. Later, King Ferdinand ordered a marble tomb, which bears an inscription having this English translation:

To Castile and to Leon,
Columbus gave a new world.

In 1513 the remains were removed to a monastery at Seville and were interred with those of his son. Twenty-three years later they were again transferred to the great cathedral at Hispaniola on the island of San Domingo. Here they remained for 260 years, or until the island was ceded to France, when they were exhumed and, with great ceremony, taken to Havana and placed in a marble tomb in the Jesuit's Cathedral. The tomb is surmounted by a marble bust of Columbus, and on a slab is an inscription from which the following is an extract:

O, remains and image of the great Columbus!
May a thousand centuries still keep them in the urn,
And in the memory of our nation.

The ashes have been undisturbed for nearly a hundred years, and it is probable that they have found a final resting place.

Athens, O., is to have an imposing soldiers' monument, after a design by J. H. Duncan, the architect of the New York Grant monument. The monument is of the Roman-Doric order and consists of a hexagonal pedestal and column in granite surmounted by a bronze figure of an artillery officer, the whole standing forty-five feet in height. On attached pedestals are bronze statues representing the infantry, cavalry and marine branches of the service, from the bronze foundry of Maurice J. Power, New York.

*Illustrated in INTERNATIONAL EDITION for March.
†Illustrated in INTERNATIONAL EDITION for April.



SCULPTURE

THE design for the "Isabella" coin provided for in the last World's Fair appropriation bill is being made by Miss Carrie Peddle, of Terre Haute, Ind. She was recommended for the work by Aug. St. Gaudens, whose pupil she has been for two years at the Art Students' League in New York. She has had two commissions from Tiffany & Co. of New York, one of which, a Virgin Mary, will be seen in the exhibit of American sculpture at the exposition.

This is high honor for a girl of 23.

AUGUSTUS ST. GAUDENS has been selected to make the bronze statue of the late Phillips Brooks to be erected in Boston.

FARRELL, the Dublin sculptor, has finished a marble statue of the late Barry Sullivan to be placed over the actor's grave. It represents him in the character of Hamlet.

MISS ENID YANDELL, who was entrusted with some of the sculpture on the Woman's Building is now at work on a statue of Daniel Boone for Kentucky.

JOHANNES GELERT'S realistic group, the "Struggle for Work," described in this paper some months ago, is to be seen in the exhibit of American sculpture at Jackson Park.

WILLIAM O. PARTRIDGE'S statue of Shakespeare for Lincoln Park is completed and a plaster cast of it is exhibited at Jackson Park. Mr. Partridge personally superintended putting this up and also his statue of Alexander Hamilton.

RUDOLPH O'DONOVAN, who designed the heroic statue of Washington for the battle column that is to mark the historic field at Trenton, N. J., is a Virginian and is said to have fought in the war of the Rebellion under Stonewall Jackson.

AFTER a March snowstorm at Genoa, the sculptors of that city spent a day in making snow statues. In two hours time Cannessa had conceived and executed a monument to Columbus, surmounted by a bust of the great Genovese explorer, of which 2,500 photographs were sold in a single day.

PARIS special says that an American has bought Rickett's colossal Charlemagne group. Since the city authorities declined to pay 200,000 francs for the group it has been in the garden of the Notre Dame awaiting a purchaser. The group will be shipped to the United States shortly.

ONE of the finest of the works of the celebrated Danish sculptor, Thorwaldsen, the equestrian statue of Gen. Poniatowski, who drowned himself in the Elster, has been long lost sight of. A member of the Archaeological Society of St. Petersburg has announced that the statue is at Homel, the chief town of the Province of Minsk.

THE public library at Boston is to have a fountain in the inclosed court, designed by Frederick MacMonnies. For Bates Hall the same sculptor will contribute to the series of portraits a likeness of Sir Henry Vane, the first Governor of Massachusetts, while a statue of Ralph Waldo Emerson will be the work of Daniel C. French, formerly of Concord.

JEAN BAFFIER, a young French sculptor, exhibited at the last Salon a design for a fountain which was realistic. He represented a gardener with sleeveless shirt, trousers stopping at the knee, and slouched felt hat, holding a watering-pot from the spout of which a stream of water proceeded. The government has purchased the statue for a park decoration.

RUPERT SCHMID has been commissioned to model a group representing the historic scene wherein Pocahontas saved the life of Capt. John Smith, and the Smith family are to contribute to the fund until \$15,000 is raised. Mr. Schmid's design shows three figures, depicting the chief, Powhattan, in the act of raising his war club for the fatal blow. A model of this group will be exhibited at the World's Fair.

EVERY little while there comes a wail from the assistant of some sculptor, claiming that he is deprived of the credit which his work entitles him to. The sculptor gets both the money and the glory. The scandals arising from these methods have led to a movement in England for the formation of a Society of Sculptors which proposes to admit assistants to membership and to otherwise give them and their work recognition.

HAPPERSBERGER'S monument of "California," more familiarly known as the Lick group of statuary at San Francisco, is approaching completion. Upon the panels are represented scenes of pioneer times in the Sierras, frontiersmen trading with Indians, trappers, and an especially vigorous representation of California under American rule. From the midst of several groups of animals, Indians, miners, etc., rises a circular pedestal which is to bear the crowning figure—a heroic allegorical representation of California. This is a female figure holding the state's coat-of-arms, a monster bear standing behind and brushing caressingly against her.

THE bust of Harriet Beecher Stowe, by Anne Whitney, now on exhibition in the Woman's Building, is pronounced an excellent piece of work. The face in the marble retains the marked characteristics of the famous author, and the artist has caught the expression of delicate humor playing about the mouth—an expression so well known to Mrs. Stowe's friends, and one of the attractions of her very interesting face. After the close of the World's Fair the bust is to be placed in the public library at Hartford.

MISS MARY REDMOND, whose colossal statue to Father Matthew has just been unveiled in Dublin, claims the distinction of being the youngest sculptor who has received commissions for important public monuments. She was not out of her teens when her model was selected out of twenty-five designs sent in for the memorial to the late District Inspector Martin who was murdered in Donegal. In 1889 Miss Redmond modeled Mr. Gladstone, and her next great commission was the present monument to Father Matthew, which the committee on accepting pronounced would "contrast favorably with any existing portrait on canvas or in stone."

A NEW YORK paper says that James E. Kelley is the only great American sculptor who has not studied abroad, which perhaps accounts for his decided originality. He acknowledges

that he owes much to the study of statuary done by Marion Crawford's father. His noted works are "Sheridan's Ride," the "Sixth New York Cavalry Monument" at Gettysburg and "Mollie Pitcher at Monmouth," which forms a part of the Monmouth monument.

* * *

THE only public statue erected to a woman in England, excepting Queens Victoria and Anne, is found in a grim, sooty old place, called Walsall. There, in a public square, is the statue of "Sister Dora," built by the countless small contributions from the poor, for whom she spent her life in healing their sick.

* * *

DOMINGO MORA, of Perth Amboy, N. J., is modeling sixteen life size allegorical figures for the new court house at Boston. Seven of the models have been completed and are being carved in granite. They represent Law, Temperance, Prudence, Justice, Poena or Punishment, Fortitude, Culpability or Guilt, Præmium or Reward and Sapientia, representing the quality of being wise.

* * *

OWING to a desire to offend none, the executors of Mr. Rosenberg, whose will provided for a new drinking fountain for Chicago, have made a change in the figure of Hebe, substituting for the nude figure originally modeled, one which is draped. It is expected that the fountain will be put up this month. From the same generous source comes the statue of Michael Reese, designed by R. H. Park, soon to be set up and unveiled in front of the Michael Reese Hospital. This statue is of bronze, heroic in size, and is to be mounted on a granite pedestal 10½ feet high.

* * *

A LOIS LOEHR, who recently won the first prize in the competition for the Milwaukee German monument, and who has just finished an historical and allegorical shield which will be exhibited at the World's Fair, received his training in Munich and Vienna. In Munich he received a medal for his design for a soldiers' monument erected in Thorn. In Vienna, where he studied for five years, he won a stipendium and was sent on an expedition of archaeological research to Samothrace by the Austrian government. He assisted Zumbusch upon his monuments to Maria Theresa and Beethoven. He spent several years in New York and has modeled busts of a number of prominent people. He is now a resident of Milwaukee.

* * *

HARTLEY'S statue of Ericsson was unveiled at Battery Park, New York, April 27. The figure of the great inventor is 8 feet, 3 inches high and stands gracefully posed on a granite pedestal about ten feet high. He holds a scroll in his hand, upon which is traced a reproduction of his original drawings for the "Monitor." The head was modeled from a bust taken from life. Upon the die are bronze low relief panels 36 inches in length by 12 in width. The subjects of these are "The Action Between the Monitor and the Merrimac," "Steam Fire Engine in Action," "Steam Sloop of War Paincton—the First Application of a Screw Propeller to War Ships," "Grouping of Various Inventions, Caloric and Solar Engines," &c. The statue is remarkable for being the first erected under the auspices of the municipality of New York outside of Central Park, the appropriation for this being \$10,000.

* * *

PROPOS of the large amount (\$75,000) raised for the monument to the late Phillips Brooks, in Boston, some interesting figures are given, showing the relative cost of the several monuments in that city. The equestrian statue of Washington, by Ball, cost only \$55,000, and \$10,000 of that sum was for foundations. The highest-cost single figure bronze statue in or near Boston is that of John Harvard, in Cambridge, for which Mr.

French received \$20,000. That of Josiah Quincy, in front of the City Hall, cost \$12,000; John Winthrop, in Scollay Square, \$8,000; Samuel Adams, in Adams (formerly Dock) Square, \$7,000; Webster, in front of the State House, \$10,000. The others run from about \$10,000 to \$15,000, including those of Sumner and Everett, on the Public Garden, Garrison, General Glover and Leif Ericsson, on Commonwealth avenue, and Benjamin Franklin, in the City Hall yard.

* * *

SPEAKING of Ball's equestrian Washington, the story of how he came to get the commission for it is an interesting one. He had made a model of Daniel Webster in plaster, which stood in the old Merchants' Exchange a long time. This model was not accepted when it came to choosing a sculptor for the Webster Statue in front of the State House. Other statues were projected in Boston, but young Ball was passed by. There were personal friends, however, who believed in his genius and skill, and they used their influence for him. The Washington Statue Fund was started by a half dozen Boston gentlemen as a voluntary association, subsequently incorporated as the Washington Statue Committee, and they gave Ball the commission, with no instructions except that it was to be an equestrian statue. Ball completed his work, but the war broke out and it was unsafe to transport the statue across the ocean to Germany, where it was intended it should be cast in bronze, so for several years it was stored in a stable. After the war it was cast at the Chicopee foundry and set up.

* * *

WE have before us photographs of some very interesting and artistic "decorative" statuary by F. Wellington Ruckstuhl, of New York. One piece, entitled "A God Amusing Himself," represents Mercury teasing the eagle of Jupiter which he caught in the act of devouring the unburned sacrifice to Apollo. This group, which is shown in our international edition for this month, was exposed in the Paris salon of '91 where it attracted much attention. It now stands on a stone pedestal in Portland Place, St. Louis. The statue is in bronze, 9 feet high, and was cast by Bureau Bros., Philadelphia. Another piece is a marble statue representing "Evening," being a beautiful female figure, wholly nude, so posed as to suggest the folding processes of nightfall. This received honorable mention in the salon of '91. The artist is now at work on a statue entitled "Peace," showing an angel descending to earth with the genius of Peace in his arms, and offering an olive branch. This is also for a park decoration.

Eighteen years ago an eccentric citizen of Uniontown, Pa., made and erected a monument to himself, even carving his own epitaph upon it and hauling the stone to the graveyard and setting it up without help. He died April 1st at the age of 80 and was buried underneath the stone.

The memorial building at Princeton college, to Frederick Brokaw, who was drowned while trying to save a girl from drowning, has been completed, costing over \$50,000. In the hallway, within a niche, will stand the memorial tablet, consisting of a bronze casting set upon a slab of Florentine marble, with a trident and a wooden life preserver. The inscription is upon the tablet.

The Leipsic papers are raising a storm because no steps are being taken to put the Bismarck monument fund to the use for which it was subscribed. The fund amounts to some 1,700,000 marks. Contributions toward it were received immediately after Bismarck's fall, and the understanding was that the money was to be applied as soon as \$1,000,000 marks had been collected. Since Bismarck began speaking his mind about the emperor, however, the committee in charge of the fund have been paralyzed by fear that any step toward honoring Bismarck with a monument would offend the emperor and hence have allowed the money to lie idle for two years after work should have been begun.

From our regular correspondent.

PARIS.

This is the season of great activity in the Parisian world of art. The Salons will soon open, showing the results of a year's work. Several new monuments are also in preparation for the city of Paris, some still at the sculptors' studios or the bronze foundries, others entirely finished waiting to be unveiled, the date they are to commemorate. Thus, Arago stately stands on the avenue of his name, and Champy, Anatole de la Forge, Alphand, Thiers, Raffel, Messonier, Barye, Cladel, among others, are soon to have their attainments in statesmanship and patriotism, science, arts and letters, immortalized in bronze and marble for the present and future admiration of Parisians and the world in general. A small monument recently erected in the Jardin du Luxembourg to the memory of the French poet, Theodoré de Banville, is very interesting for its defects, apart from the souvenirs it evokes. It is composed of a huge pedestal and the bust of the poet, both of white marble, a mistake to begin with. Of the two parts the pedestal is by far the most important, overlaid with ornaments, wreaths and palms, some in bronze, quite a monument by itself, and of no definite character. The architect evidently forgot the object of his pedestal and the necessary relation between the sculptor's work and his own, and the difference of character is so great between the two that the poor bust is entirely out of place. For him the memorial was uniquely composed of a pedestal. The bust, by Mr. Boulleau is, in comparison, very fine and simplicity itself. The sculptor certainly had a grand conception of the character of the monument; it is shown in his work, but he was only allowed to express it in his part; the pretensions of the architect did the rest. Thus from a mere lack of understanding between the two artists we have a very unsatisfactory work, instead of a pleasing one.

This seems interesting as an example of a current fault in modern art, i. e.: lack of harmony of architecture and sculpture. One of the characteristics of the great epochs in art, Egyptian, Assyrian, Greek, Gothic and Renaissance, is precisely the beautiful harmony in the conception and details of their works. The Egyptian is always grand. The Assyrian is also grand, but with richer details and a greater feeling for nature. Greek sculpture is admirably adapted to the simple and full lines of Grecian architecture, and both are in complete harmony with the strong sunlight, clear atmosphere and blue hills of beautiful Greece.

It would seem that the architects of the Gothic cathedrals were their sculptors also, so harmonious and absolutely necessary are the sculptures to the grand lines of the edifices. This seems the more wonderful when it is realized that some cathedrals remained centuries in the hands of workmen before being entirely finished. The style was faithfully handed down from father to son. It is curious to note that modern restorations of Gothic sculpture are cold and colorless in comparison to the original parts still untouched by the wear of time.

If the sculptors of the Italian Renaissance, like Donatello, or the French Renaissance, like Jean Goujon, did not always design the architectural or ornamental part of their works, they were certainly in complete sympathy with their co-operators, as their productions always present a beautiful 'ensemble.'

Such results seem to be exceptions in this century, which has produced, however, masters and chefs-d'œuvres equalling the best of the past, but the great works are isolated, and represent the efforts of individual originality.

Fremiet's monument to Raffel, the celebrated draftsman and lithographer of Napoleon's grenadiers, soon to be set up in the Jardin du Louvre will be a very remarkable example of this. It was composed and executed entirely by the sculptor. The bust of Raffel is supported by a column, and at the base is the figure of a Grenadier, beating his drum with great animation, wreaths, palms and inscriptions also ornament the base and column. The form of the whole, the movement of the figure, the ornaments and decorations of the column, all is one, all calculated to help to express one idea to make a decorative effect, and clearly tell the spectator what Raffel did and was—such is this, and ought to be all commemorative monuments.

There are to be two monuments to Messonier, one for Paris, by the sculptor Antonin Mercie, the other for Poissy, a country town near Paris, where Messonier lived and worked many years; this is to be executed by Mr. E. Fremiet.

Another interesting new monument will be that of Anatole de la Forge, by Barrios, for his tomb in the cemetery of the Pere Lachaise. The sculptor has represented the patriot as the hero, which he was, of a famous episode of the late Franco-Russian war, at St. Quentin.

The Chapelle Thiers, tomb of the statesman, in the same old cemetery, is now being enriched by another memorial to his glory. The "Chapelle" already contains two beautiful bas-reliefs by the late Chapu, the "Genius of Immortality" and the "Liberation du territoire." The new group, composed of three figures nine feet high, Thiers and two symbolical female figures, "Immortality" and "Patrie," has been placed at the end of the chapel between the two reliefs. Thiers is standing, meditating, eyes half closed, and "Immortality" gracefully presents him with a crown. The other figure, "Patrie," sits on a broken cannon, and bent over stricken with sorrow she sadly looks at the crypt before her containing the sarcophagus of the illustrious statesman. The folds of a flag she holds in her left hand partly cover the base. The figure of Immortality is in bronze, the other two are in marble. Mr. Antonin Mercie has put in this work all the charm of conception and execution we are accustomed to admire in all his productions.

Two statues by an American sculptor, Partridge, and representing Alexander Hamilton and William Shakespeare and destined for Brooklyn and Chicago, respectively, were noticed at a bronze foundry the other day. The French are talkative, and it seems that a good deal could be said in this case about the way our young sculptors come abroad and have their work executed by skillful French or Italian sculptors. There is a great desire in America for a national art, but this is not the way to get it. All our young artists ought to come to Europe to study, but between studying and having one's work executed by superior workmen, there is a great difference. It is certainly necessary to employ workmen in sculpture to do some of the hard work, but to employ superior ones to do *all* the work is certainly a fraud, encouraged, however, by the ignorance of the public, and their haste to get their statues.

PARISIAN.

The Channing Statue.

THE city of Newport, R. I., has always been proud of the fact that Rev. William Ellery Channing was born within its precincts. It is doubly proud, just now, in the possession of a bronze statue of that eminent divine, the gift of a citizen of Boston, and the work of Mr. W. Clark Noble, the sculptor. It was unveiled last January. The statue stands nine feet high and is mounted on a severely plain block of granite with a simple inscription. The great preacher is represented as though he was standing before an audience and about to pronounce the benediction. He is attired in an old fashioned preacher's gown which the artist has skillfully used to give grace to the figure. The rear view shows an artistic handling such as is rarely seen in a male figure. Mr. Noble, speaking of the realism and idealism in this work, says: "In a certain sense I am a realist, but a realist only when realism is purity and spiritual beauty. I have been able to make my Channing realistic and at the same time impressionistic, without sacrificing anything of the spiritual, because I found in Channing himself the perfect type of purity. His character was beautiful and it has been said of him that at times he seemed like an angel speaking from the pulpit. His whole life was a benediction, and it is as the expression of that idea that I have tried to perpetuate him as well as the mere reproduction of the outward semblance of the man."

The statue was cast by the Henry-Bonnard Bronze Co., and it is mounted on a pedestal of Quincy granite. It cost \$15,000.

Enclosed find subscription for MONUMENTAL NEWS. WE WOULD NOT BE WITHOUT IT.—Holland & Hochwalt, Eaton, Ohio.

The Audubon Monument.

The runic cross erected in Trinity Churchyard, New York, to the memory of John James Audubon, the great American naturalist, was unveiled April 26. The cross is one piece, nineteen feet high, weighs seven tons and was hewn out of a block of North River Blue Stone weighing fourteen tons. The monument cost \$10,000, and was designed, modelled and executed by R. C. Fisher & Co.

On one side of the cross appear the turkey buzzard, albatross, wild goose, spoonbill, prairie hen, crested grebe, nighthawk, raven, paroquet, pelican feeding her young, owl, and a dove at the top of the cross. In a panel at the foot of the cross appears this inscription:

O all ye fowls of the air bless ye the Lord; praise Him and magnify Him forever.

The other side of the cross is carved with these animals. Bison, elk, bear, antelope, puma, fox, badger, raccoon, opossum, squirrel, hare, and at the top a bat, with "1892" and monogram "A" underneath. The panel below has this inscription:

O all ye beasts and cattle bless ye the Lord, praise Him and magnify Him forever.

The die is five feet high and weighs about seven tons. On the face of the die is a portrait of Audubon and the sides have carvings of fowling pieces, powder horns, game bags, palette, maul stick, dogwood blossoms and Florida lily. The monument is of a bluish gray color, almost of a heliotrope hue, and the stone admits of the highest artistic treatment, delicate lines in the carvings appearing with great distinctness. The general design of the monument is copied from the ancient stone cross in Iona. The Audubon cross is said to be the largest Celto-Runic cross ever made.

An Irish Memorial.

The largest Celtic cross ever worked has been placed over the grave of the late Primate of All Ireland, (Dr. M'Gethgan). It is twenty-five feet in height. The cross is of Mountcharles (Co. Donegal) sandstone. The weight of the whole is over eleven tons. On the front of the cross the following subjects are represented: The Annunciation, the Nativity, the Flight into Egypt, the Presentation, the Agony in the Garden, the Resurrection and the Last Judgment. The latter represents our Lord in the clouds,—figures on the right are ascending to heaven; on the left are the lost souls being swallowed by a huge dragon, representing hell. Under the figure of our Lord is one of St. Michael, the Archangel, and still lower a picture of Purgatory. Overhead the Trumpeting Angels and the Holy Ghost are represented. On the back are panels representing Sampson overcoming the Lion, Abraham's Sacrifice, Samuel Selecting David, Samuel Anointing David King, the Fiery Furnace, Elijah Ascending to Heaven in the Chariot, and the Crucifixion. The sides are panelled and carved in Celtic ornament, the design being copied from Monasterboice, Clonmacnoise, and Kells Crosses. There are also figures of four evangelists, two on each side. The work has been two years in hand. Mr. William Hague, F. R. I. A., is the architect, and the cross has been worked in Dublin by Mr. H. G. Barnes. —London *Funeral Directors' Journal*.

World's Fair Notes.

Readers of the MONUMENTAL NEWS when visiting Jackson Park, will be especially interested in the sculptural decorations on the buildings and about the grounds, of which we have said not a little from time to time. It has been stated that about 150 sculptors have been engaged on this work. Of course most of these have been assistants to the artists who have had the sculptural work of the several building in charge and from whose models the work has been done. It will be

sculptures, the colossal "Republic" is by Daniel French, the Columbian Fountain by T. MacMonnies, the animals which guard the approaches to bridges by Kemeys, Proctor and Potter, and the statue of Franklin at the entrance of the Electricity Building by Carl Rhol-smith.

There is a unique exhibit of fossils from the so-called bad lands near the Black Hills. There will be several heads of mammoths, one being four feet in diameter and with all the huge teeth intact. There are many fossil fish, a megalosaurus, and any number of fossil bones, turtles, and other specimens. Altogether the collection will comprise several hundred pieces.



MUSIC.

PAINTING.

ARCHITECTURE.

STATUARY ON THE ART PALACE. P. MARTINY, SC.

interesting to remember, when viewing the principal buildings, what artists designed the sculptures, and the following list will be found convenient for reference: Administration Building, Karl Bitter, sculptor; Machinery Hall, Waagen and Krauss, sculptors; Agricultural Building and Art Palace, Martiny, sculptor, Central Pediment of Agricultural Building, by Larkin Meade; Casino, Music Hall, and Peristyle, Theodore Bauer, French, Potter and others; Transportation Building, ornamental work, Schneider; statuary, Boyle; Horticultural Building, Lorado Taft, sculptor; Woman's Building, Alice Rideout and Enid Yandall; Fisheries Building, Joseph Richter, sculptor. Of the detached

Aspen, Col., sends a statue entitled "The Silver Queen." The work is composed of gold and silver and Aspen ores, and reaches a height of eighteen feet, while the base is ten by twelve feet. The figure represents a typical American maiden sitting upon her throne, modestly accepting the homage paid by her subjects. The intrinsic value of the work is over \$20,000.

From an ancient tomb near Truxilo in Peru will be brought to the exposition a curious object of great antiquity. It is a large metal, half round base, and upon which is seen standing several figures of savages in the act of burning the body of a man which is seen hanging over a fire, the limbs tied around the body,

which rests upon a coarse frame. In the background, mounted on an elevated platform, there are three men who appear to be judges of the execution. The group was discovered last year, and indicates the existence of either cremation or human sacrificial rites in ancient Peru.

Two Pittsburg artists, M. B. Leisser and W. Spriestersbach, the latter a young sculptor, have made a unique design for a Columbus monument. It is to answer the double purpose of a monument and a musical pavilion. What constitutes the dome of the pavilion within, represents the globe of the earth without and about it and in harmony with the general architecture are sculptured figures and scenes from the life of Columbus. It is made of marble and is eight feet square, being constructed on a scale of an inch to the foot. It is on exhibition at the Fair.

Special fete days will be a prominent and interesting feature of the Fair. Many of the states and foreign countries have designated days for special services. Those to occur this month are as follows: Washington on the 17th, Wisconsin the 23d and Maine the 24th.

A monument four feet and a half square at the base and sixteen feet in height, from Harrison's Baxendale granite quarry, Montana, will be shown in the exhibit from that State. It weighs 30,000 pounds.

Some curious specimens of Buddhist stone carving are to be shown in the ethnological exhibit. They consist of a collection of statues and friezes which formed a part of an ancient temple, excavated two years ago. They are believed to be over 2000 years old. One beautifully carved fragment is the hand of Buddha holding an alms bowl in which a snake lies coiled. Another specimen is a block of stone, said to have once rested on the steps of a temple, probably those leading up to the shrine. Oil is being poured on the heads of the figures and Buddha, sitting crosslegged under a lotus leaf, the Buddhist emblem, is evidently performing the baptismal ceremony.

The Spanish exhibit is to be seen in the convent of La Rabida, an exact copy of which has been erected. Among the works of art to be shown here are seventy-four statues of Columbus, copied from the various Columbus monuments all over the world.

The foreign art exhibit, it is said, will surpass anything of the kind hitherto seen in this country. It is a well-known fact that most of the works of the best artists of Italy, France and Germany find a ready market in those countries. Among the prominent Roman sculptors to be represented are Appoloni, who was for a time professor in the Boston Art School, Aurelli, Alegretti, Botmelli, and Ciniselli. From Florence the exhibit of sculpture will be of greater importance than that of painting. One of the finest examples of sculpture in the entire Italian exhibit is "The Last of the Spartans," a superb figure of the dying soldier writing with his own blood upon his shield the words.

"I conquer." This work is by Trentanove. A figure of Rebecca by Zocci is one of the masterpieces of that artist. Other Italian sculptors to be represented are Rota and Canessa of Genoa, and Canonica and Tobacchi of Turin. Sig. Angelo del Nero, the Italian commissioner of fine arts, has spent three years in working up an interest in the exhibit from that country and looks upon his achievement with great pride.

Germany has sent some beautiful pieces of bronze statuary. Among the earliest to be installed in the Art Palace was "The Messenger from Marathon," by Max Kruse, a nude running figure of the soldier who, the sole survivor of the battle, bore the news and then dropped dead. "Saved" is the title of a realistic group of a sailor bearing in his arms the figure of a young girl rescued from drowning. It is by Adolph Brutt. The same artist is to be represented by his "Eve," a group loaned from the National Museum of Fine Arts in Berlin. Eve is shown as she steps from Paradise bearing in her arms the infants Cain and Abel. A curious motive treated in a statuette by Sommer, a German sculptor, who resides in Rome, is "The Devil Catching Flies." The subject is an allusion to the German proverb, "When he has no souls to catch he catches flies." By Herter there is a figure of a triton who in fishing for smaller fry has caught a mermaid. By Siemering, the sculptor who has worked for many years upon a monument of Franklin for Washington, there is a figure representing "Peace." The architectural exhibit from Germany will be an important and interesting one and will include many models of modern structures. Chief among these will be model on a large scale of the new Parliament building in Berlin. This was made at the expense of the imperial government especially for the World's Fair, and a sculptor was sent here for the especial purpose of mounting the model. There are to be seen many other elaborate models of churches, public and private buildings and monuments. The great statue "Germania," which is to surmount the new Parliament building above referred to, is in the Manufacturers building, overlooking the German exhibit. It is sent here by special order of the emperor pending the completion of the Parliament building. The statue is twenty-five feet in height and stands on a base some fifty feet from the floor. The loan of this statue illustrates the liberal manner in which the Germans have planned for the exposition. The total expenditures of the imperial government for the Fair are estimated at \$1,000,000. The Prussian government will expend \$120,000 more. The Krupp gun exhibit, counting the value of material, will cost \$1,500,000. Baron Stumm has gone to an outlay of \$100,000 in the Mining building. The chemical group will cost \$80,000 and the Saxon textile fabric group \$60,000. The German commissioner says this is to be the finest exhibit ever made by Germany at a World's Fair. Her art exhibit numbers upward of seven hundred pieces and these include many choice objects from the principal art galleries of that country.



Proposed Monuments

Waynesboro, Pa., is to have a soldiers' monument.

The Historical Society at New Haven, Conn., propose erecting a soldiers' monument.

Efforts are being made at Wooster, Ohio, to increase the fund being raised for a memorial to Karl Merz.

The confederate survivors of DeKalb county, Ga., propose to erect a monument to the memory of their dead.

George R. Smith, G. A. R., of Sedalia, Ill., has decided to erect a monument to D. R. Middleton, a late comrade.

The Ohio legislature has passed a bill appropriating \$90,000 for monuments to be placed on the battlefield of Chickamauga.

The Lane Monument Committee, with headquarters at Marshall, Texas, are raising funds for a monument to General Lane.

The G. A. R. post at Watseka, Ill., are contemplating erecting a \$2500 soldiers' monument in the G. A. R. cemetery at that place.

As soon as the soldiers plat in the Wyuka cemetery, Lincoln, Neb., has been arranged it is proposed to erect a monument there

A fund is being raised to erect a monument over the grave of William R. King, at Selma, Ala. King was once vice president of the United States.

The New Hampshire House has passed a bill appropriating \$10,000 for statues of Gen. John Stark and Daniel Webster in National Statuary Hall.

The John J. O'Brien Association, New York city, has decided to erect a seven thousand dollar monument over the dead leaders, grave in Calvary cemetery.

John U. Barr, a Pittsburg, Pa., architect, is making plans for a mausoleum to be erected by the Shields estate near Sewickly. The cost is estimated at \$25,000.

Governor Flower of New York has vetoed the bill appropriating \$20,000 for the purchase of Polopel's Island and erecting thereon a statue of Hendrick Hudson.

The members of St. Mary's parish, Lynn, Mass., are taking preliminary steps towards the erection of a bronze statue to the memory of the late Monsignor Patrick Strain.

A bill providing for the erection of a \$250,000 soldiers' and sailors' memorial arch at one of the entrances to Central Park in New York city, has been introduced in the New York legislature.

The soldiers' monument project at Stamford, Ct., has been referred back to the committee having the matter in charge with instructions to report at the annual meeting in October, 1893.

The legislature of New Hampshire have voted an appropriation of \$1,200 for the purpose of erecting and dedicating a suitable monument to the memory of Gen. John Sullivan at Durham.

The citizens of Boxboro, the smallest town in Middlesex county, Mass., are going to erect a monument to their first pastor, Joseph Willard, who was graduated from Harvard in 1766.

The Brooklyn, N. Y., Spiritual Association are proposing raising a fund for the purpose of erecting a monument to Mrs. Margaret Fox Kane, the first woman to hold intercourse with spirits.

An ordinance providing for the erection of an equestrian statue to General Sherman in front of the City Hall at St. Louis, Mo., was passed by one branch of the city council, but failed of passing the other.

The people of Weymouth, Mass., have voted to appropriate \$1,000 for the purchase of a suitable piece of land on which to erect the monument to Miles Standish offered by Hon. Chas. Francis Adams for that town.

A fund of \$1,000 has been raised at Dixon, Ill., for the purpose of erecting a monument at the grave of John Dixon, the founder of that place. The monument will be set up in Oakwood cemetery some time during the summer.

A movement headed by Bishop Nichols has been started to erect a monument at Point Reyes, Cal., the place where it is supposed the first Anglican church service in the United States took place. This historical service was held June 24, 1579.

Ex-Governor Holt will himself erect a monument at the Guilford, N. C., battle-ground in honor of the North Carolina troops. It will mark the spot where the militia from Surry and Stokes counties stood their ground after the Continental line had retired.

The Holston *Methodist*, published in Knoxville, Tenn., is receiving contributions to a fund for the erection of a suitable monument to the memory of the Rev. Dr. Wiley, who died a few weeks ago.

Frank Girard, Brooklyn, N. Y., has undertaken the task of raising a fund to place a monument at the unmarked grave of Billy Manning, at Piqua, Ohio. Manning was the greatest of all burnt-cork artists.

The Ohio House of Representatives have passed Mr. Garber's resolution petitioning Congress to assist in the centennial celebration of Mad Anthony Wayne's victory, and to erect a suitable memorial structure in Greenville, Ohio.

A movement is on foot in Geary county, Kansas, headed by Captain James R. McClure to work up a sentiment in favor of having Congress erect a monument at Fort Riley in memory of General Nathaniel Lyon, one of the heroes of the war.

Mrs. C. Van Etten Mack, of New York, is heading a movement for the erection of a statue to the memory of Queen Isabella. It has been suggested that the statue should be erected at one of the entrances to Central Park, opposite the statue of Columbus.

The following bills have been introduced before the Texas Legislature: One for an appropriation of \$10,000 to erect a monument on the capitol grounds to General Houston, and for \$1,000 to mark his grave with a suitable memorial, also one for \$5,000 to erect a monument over the grave of General T. J. Rusk.

Several monument bills have been introduced in the Pennsylvania legislature, the most important being for a \$25,000 monument to Gen. Hancock. The representative of the people of Fishtown asks for an appropriation of \$5,000 for a monument at that place to Wm. Penn to mark the spot where the elm tree stood under whose branches the alleged treaty with the Indians was held. Monuments to ex-President James Buchanan and Wm. Maclay, one of the first senators are also proposed.

An international competition is announced for a monument to the memory of the great Hungarian statesman, Count Andrassy, which is to be erected in the city of Budapest. Three prizes will be awarded, the first of six thousand francs, the second of four thousand, and the third of three thousand. The competition will remain open until October 1, 1893. The monument must comprise an equestrian statue of Count Andrassy. Plans, and model, in plaster, are required, and must be delivered, before the expiration of the period fixed, to the president of the executive committee, II Foutca No. 1, II etage, Budapest, Hungary.

A Comparison of Puritan and Grecian Monumental Art.

A TOMBSTONE
AT
MARBLEHEAD, MASS.



A friend of mine, while summering on the shores of Massachusetts Bay last season, made a photograph of the gravestone of which a sketch is here given. It stands on a bluff overlooking the bay in the old Marblehead burying ground, and is quite modern as times go in the Massachusetts Colony. The date upon the stone is 1776, and the memory of one dear to him who raised it is perpetuated by the following inscription:

"Deposited beneath this stone, the mortal part of Mrs. Susanna Jayne, the amiable wife of Mr. Peter Jayne. She lived beloved and died universally lamented on August 8th, 1776, in the 45th year of her age."

The especial interest that this stone has to the student of monumental art is the exhibition of the state of taste in such matters in the colony of Massachusetts in the year 1776. I have seen some of the same sort in the burying ground at Stonington, Conn.,—slabs with an ornamental death's head, which was simply paralyzing in its artistic effect. Now it seems singular that in this year 1776, a year of advanced political ideas of thoroughly artistic effort in other directions, this stone should be considered the proper thing. The people of that day conceived and executed architectural works which are considered worthy of study, development, and even reproduction in our own day. The domestic articles, the furniture, were not only good, but thoroughly good, and so valuable for our study that drawings and measurements of the same are to be found in our current architectural journals. Why does not this humble memorial occupy the same high plane? I'll tell you.

If there is one art more than another that staggers under the weight of arbitrary custom it is that of mortuary art. The humble statuary who so carefully finished the well arranged ornament upon this stone was influenced by many more causes than he dreamed of.

But he, of all the artisans of the time, was the one who was last to be freed from the bondage of custom. While other men in other lines were freely exercising their intellect encouraged by the patronage of the cultivated, he worked on neglected, feebly portraying conventional views and worn out ideas. These carved horrors came down to him from the dreary time of the Puritan, when life was crushed out of art, and the veil of beauty was stripped from nature, and all the enchantments of poetry and revery eschewed. Omnipotent death, holding in his fleshless hands the earth and the sun; dead men's bones and emblems of fleeting time! Such was the philosophy of the time which filled the world with an insane gloom, and crippled the skill of our tombstone maker.

Now I want to show you another tombstone raised to a woman 2000 years earlier than the above, a sketch of which will be found at the bottom of this column. This one was found in the Street of Tombs at Athens, marked "To Hegeso." Note the difference between the Greek and the Puritan. Hegeso is attended by a handmaid who holds her casket of gems. Here as ever in Greek art, there

are no carved horrors of death, no skeletons, no cross-bones, only a slight indescribable tinge of sadness in the pose, as where friends grasp hands for the last time. Greek taste avoided depicting the extravagance of grief, and covered all death's terrors with a veil of subtle reserve. Contrasted with it the Puritan is grotesque.



ORA COLTMAN.

IN THE STREET OF TOMBS, ATHENS.

The Davenport (Ia.) *Democrat*, whose editor is a member of the Iowa State Monument Commission, states the preliminary preparations for the erection of the monument provided for by the last general assembly, have progressed so far that there is a probability that bids will be asked for within the next ninety days. Scale drawings have been prepared and approximate estimates secured. The drawings follow closely upon the design furnished by Mrs. Ketcham, who, it will be remembered, died soon after the acceptance of her design. They show a structure 133 feet in height. The approach by six granite steps to the platform shows an extreme measurement of sixty feet square. The height of the entire base from grade line to base of shaft is 33 feet. The shaft or column—13 feet in diameter at base, 7 feet 9 inches at top, surmounted by an ornate capital 12 feet high by 13 extreme diameter—stands, with its bronze figure of fame, 100 feet in height.

Greenwood Cemetery.

At Greenwood Cemetery, I found myself to be one of the very few travelled Englishmen who have taken pains to inform themselves in reference to the peculiarities and customs of American interment and cemetery management generally, writes Mr. Halford L. Mills, of London, Eng., in the *London Funeral Directors' Journal*. Occasionally a cemetery superintendent from England, or one who had some proprietary interest in an English Cemetery company, has looked in for a short period; but I found myself so cordially welcomed by Mr. L. J. Wells, the superintendent, who is a civil engineer by profession, and has had charge of that cemetery for 45 years, that I spent half a day there with very great pleasure. In extent it is about one square mile, actually 474 acres; and as I drove about in it for hours, partly in an independent way and partly with the superintendent in his brougham, I am able to say that there is nothing like a waste space in it, but that the whole of its surface is most carefully as well as beautifully and artistically arranged, laid out and filled up, so that there is no point at which the perspective is not an entertainment.

Unlike the cemeteries that we are accustomed to, it is bounded by main roads on all sides; these make eight entrances a possibility, a great consideration for funeral traffic, both in regard to the size of the place, and the fact that no central spot has to be reached by all funeral traffic, as is the case with us where the service is to be held in the cemetery church—the universal custom in America being to hold the religious service in the house of the deceased and to then go straight to the grave side; having entered the cemetery gate the funeral proceeds to the grave by vale and crescent, dell and dale, arbour and lake—for there are no fewer than eight lakes, some natural and some artificial within the walls of Greenwood Cemetery—the cemetery roads in labyrinthian confusion are beyond the complexity of a maze. It is naturally an undulating spot, and in every respect the natural advantages have been heightened by art. Each eminence in it is named, there is "Glade Hill" and "Ocean Hill," which is the highest, and commands a view of the entrance from the Atlantic Ocean to New York Harbor.

One peculiarity of Greenwood Cemetery—a point in strong contrast to what we are accustomed to here, though I believe only in accord with the universal custom of the American continent—is that it is not a dividend earning, nor a rate-paying concern, but is a "corporation" formed exclusively for the purpose of providing burial accommodation, and all of its revenue is spent upon itself. There is in the first place a handsome remuneration made to all who take part in its administration. The equipment of the whole place is perfect and admirable to an extent far beyond our ideas.

It possesses a fund of \$1,370,586 for the permanent care and improvement of the cemetery in addition to a special trust fund, for the permanent care of lots which have been sold, of \$322,278.

The staff of the cemetery comprises, carpenters, painters, blacksmiths, engineers, 200 men, 20 horses, and steam roller; an engine pumping-house with power to lift water 150 feet, which is extracted from five wells and by which the lakes and reservoir are kept full; a mechanical stone crusher, and suitable premises for carrying on the work in every department. The stone for their roads is raised in their own grounds, and they have a mechanism, of the superintendent's invention, for breaking the stone to a suitable size for road-making, so arranged that the stone unloads and deposits itself, after leaving the crusher, by gravity. There is also a special police corps authorized to watch the stonemasons and to inspect their work in laying foundations, etc., who are responsible both to the superintendent of the cemetery and to the city police commissioner for their duties and character.

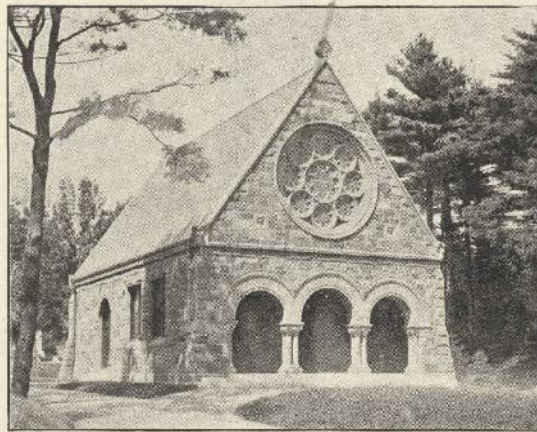
The busy season is the summer; during the hot weather children die off very rapidly from many diseases. The interments in the summer sometimes number eighty a day. There are no common interments in Greenwood Cemetery, on the contrary, some of the grave spots are of ample dimensions, and the cost of many of them would be alarming to an English undertaker's customer. A Mr. Thomas Berry has just purchased one lot for \$5,750.00. I saw the Niblo family mausoleum that stands on a plot for which they paid \$100,000.00, and spend \$500.00 a year in keeping it up. The Steinway mausoleum contains 128 catacomb compartments and cost \$100,000.00. There are many such mausoleums adorning the prominent parts of the cemetery, and often a number of them together.

The tombs are of a different order to what we are accustomed to here, particularly having no crosses—a cross is quite a rarity. It is difficult to believe that you are in the cemetery of a Christian people when every memorial of any pretension is an illustration of classic heathen art. These are peculiarities about some of them; in one case five marble posts stand like guardians in front of the tomb, on each post a lamp was kept burning from the time of the decease of the first to that of the last member of the family. Horace Greely's tomb is made of type metal, and bronzed. John Matthews' sculptured sarcophagus bears a full length recumbent statue of him; on each corner of the four pillars there are correct portrait statues of different members of the family in marble; above this a canopy of richly carved stone rises to height of 36 feet, and upon it a representation of Mr. Matthews leaving England for America at the age of 21 years, so poor that when he landed in New York he shouldered his own box from the quay to the city.

The Congressional Cemetery at Washington.

The Congressional cemetery lies about a mile southeast of the capitol at Washington, on the bank of the Potomac river. Its surroundings are peaceful, for the city has grown in just the opposite direction and left it standing, as it did a hundred years ago, amid the peaceful tranquility of rural surroundings. Here lies all that is mortal of two vice presidents of the United States, a British envoy, a Prussian minister, senators and representatives in Congress, admirals and major generals, associate justices of the supreme court of the United States, an Indian chief of renown, and scattered among and about them, the remains of hundreds of men and women whose names have never graced the printed page. It is an odd place. Not quaint—the “modern improvements,” which permeate it so thoroughly, have taken from it the quality of quaintness. But new and old, fresh and quaint, famous and commonplace make a strange combination on each side of its narrow paths and little-frequented drives. Its very name is an oddity, for, from its inception, it has never been strictly a congressional cemetery. It was originally a private enterprise and when Congress determined to favor it with its patronage when distinguished men were to be buried at the public's expense, the owners named it the Congressional cemetery on much the same principle on which the London haberdasher writes “Purveyor to the Prince of Wales” at the head of his business announcement. The circumstances which moved Congress to select an official burial place was the necessity (due to the excessive cost of transportation at that time) of burying at the capital members of Congress who died there in the discharge of their public duties. According to the original plan, monuments of a modest character were erected over the remains of all the senators and representatives who were buried there; but this was soon modified by the addition of a provision under which cenotaphs of a similar design and character were to be erected in memory of members of Congress who might be buried elsewhere. As the government reservation in the original cemetery was not well defined, the graves of the distinguished dead were very irregularly arranged, and, but for the peculiar style of the monument which marks each one of them, it would be difficult to distinguish them at a distance from the last resting places, ancient and modern, which lie between and about them. The Congressional mile-stone on the road to eternity rested on a brick foundation. Its base was a square block of sandstone on which rested another square block of the same stone somewhat smaller in size. On these rested a cube or “dic” on whose paneled side was inscribed the name of the deceased together with his official title, his age and the date of his death. They stand side by side in long rows in the Congressional cemetery as bare and as meaningless as the little foot-stones that mark the graves of the soldier

dead at Arlington; more meaningless, in fact, for the foot-stones mark a grave while most of the blocks of stone in the Congressional cemetery mark nothing but a memory. The custom of erecting cenotaphs was abandoned in 1876 when the house of representatives during the discussion of an appropriation for seventeen cenotaphs, determined that it was time to discontinue the erection of useless monuments. An act was passed at that time providing that where an actual interment of a member of the house of representatives or of the senate took place in the Congressional cemetery, the sergeant-at-arms of the legislative body of which he was a member should cause a monument of granite with suitable inscriptions, to be erected over the grave. The main drive of the cemetery is called Congress avenue and along one side of it are long rows of congressional monuments.



The Rhodes Memorial Chapel, Pine Grove Cemetery, Lynn, Mass.

This chapel, recently erected in Pine Grove cemetery, was bequeathed by will by Mrs. Lydia Newhall Rhodes as a memorial to her husband, the late Amos Rhodes. It will be known as the Rhodes memorial chapel. The building is of granite with free stone trimming and tile roof. Its dimensions are 60x30 feet and it has a seating capacity of 125. Each end is ornamented with a large rose window. The various colored glass heightened by the sun's rays, presents a most beautiful sight. The interior is finished in hard pine and is carpeted and upholstered in a most thorough manner. Every detail has received the best attention. Work was commenced in the spring of 1891 and completed the past summer. The cost was about \$25,000. Shipley, Rutan & Cooledge, of Boston, were the architects, and Norcross Bros., of Boston, were the contractors and builders.

Subscribe for The Monumental News.

Our Illustrations.



MARBLE CROSS—FRONT VIEW.

the main stem of the delicately carved ivy vine has any bearing on the cross and the tips of the leaves only touch it at intervals.

INTERNATIONAL EDITION.

TWO MARBLE MONUMENTS AT THE WORLD'S COLUMBIAN EXPOSITION:

These monuments, a sarcophagus with a graceful Grecian urn and a pedestal supporting a handsomely carved Easter Cross, are executed in Rutland marble and form a part of the exhibit made by the Vermont Marble Co.

MERCURY AMUSING HIMSELF,

A bronze by F. Wellington Ruckstuhl. This pleasing piece of decorative sculpture stands on a stone pedestal in Portland Place, St. Louis, Mo. Mercury is represented as teasing the Eagle of Jupiter which he has caught in the act of carrying off the sacrificial lamb. The group was exhibited at the Solon in Paris where it attracted much attention as an artistic example of decorative sculpture.

THE LARKIN MONUMENT, Laurel Hill Cemetery, San Francisco:

This monument presents an artistic combination of granite, marble and bronze. The bases are of granite, the first measuring 12x14 feet, on the second base rests a concave die with renaissance ornamentation in bronze on the corners, terminating in lion paws on the wash of the second base, on the die is an Italian marble figure, in kneeling posture, in the act of laying a branch of palm over a portrait medallion of the deceased which occupies the center of the die. On a tablet at the side of the winged figure is the word Pax, which is partially supported by the figure. The design is an original conception of Rupert Schmid's the San Francisco sculptor

REGULAR EDITION.

WORLD'S FAIR STATUARY.

Statues of Architecture, Music and Painting for the Art Building, P. Martiny, sculptor.

THE RHODES MEMORIAL CHAPEL, Lynn, Mass., page 231.

WILLIAM E. CHANNING STATUE, Newport, R. I., W. Clark Noble, sc., pg. 225.

A MONUMENT AT VIENNA, page 211.

DESIGN FOR A CROSS MONUMENT.:

Front and rear views of a piece of marble carving executed by C. O. Spicer, of Johnstown, Pa. This is an interesting example of high relief carving, which can only be seen at its best through a glass. No part of

THE BATTELL MEMORIAL FOUNTAIN, Norfolk, Conn.:

This artistic piece of work was designed by Mr. Stanford White, architect of New York, expressly for the spot in which it stands. The fountain is in the form of a bow-shaped watering basin for horses, from the straight side of which rises a column twelve feet in height, with a delicately carved capital, which supports a bronze globe, rolling over which, as it were, are three dolphins spouting water into the watering basin below. On the face of the granite pillar is cut this inscription in raised letters:—

IN MEMORY OF JOSEPH BATTELL,

BORN IN NORFOLK 1806.

DIED IN NEW YORK 1874.

A lion's head below the inscription pours more water into the basin, and on the opposite side of the column a dolphin stretches its length, spouting water into a small cup-shaped basin for drinking water. A suggestion of water flowing over the dolphins on the globe on top, and on the one on the column is a very pretty conceit of the artist. A low curved stone seat is placed opposite the drinking fountain so that it completes the line of the circle begun by the watering basin, and thus the memorial pillar rises from the center of the composition. Shallow bowls are contrived under the run of the watering basins into which dog heads spout the water for thirsty dogs to lap. Two bronze lanterns, studied from the famous lantern on the angle of the Strozzi palace in Florence, hang from brackets projecting from the pillar just below the capital. The fountain is executed in Milford granite and bronze.

The statue of Columbus modeled by the Spanish sculptor Sunol, to be erected in Central Park by the New York Genealogical Society, will be dedicated some time this month, and it is expected that the Duke of Veragua, a descendant of Columbus, will be present. This statue cost \$15,000, the amount having been raised by \$100 subscriptions.

A monument to the Scottish-American soldiers who served in the war for the Union, is to be unveiled in Edinburgh, in July, and it is stated that Chauncey Depew is to make the address. The monument will be fifteen feet in height. The base consists of polished red Aberdeen granite nine feet in height, and is surmounted with a bronze life-size figure of Lincoln, with battle flags and a freed slave at his feet. The cost is \$5,000, fifty gentlemen giving \$100 each to the fund.

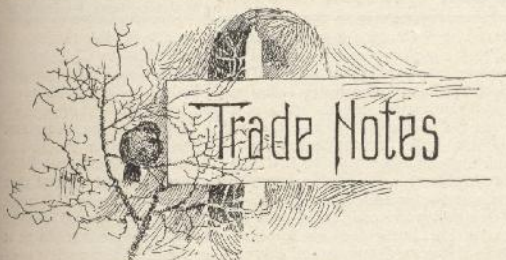
The Count Rumford Historical Association has decided to erect at Woburn, Mass., which was the birthplace of Count Rumford, a replica of the famous bronze statue of that historic personage at Munich.



MARBLE CROSS—REAR VIEW



FREDERICK P. BAGLEY & CO.,
 WHOLESALE DEALERS IN MARBLE
 CHICAGO.



The busy season's now at hand,
 Agents are on the run;
 The widow calls her watch-dog in,
 And the widower
 gets
 his
 gun.

Stanton & Farnum, Providence, R. I., have reduced their hours of labor from 59 to 53 hours a week.

Barth Brothers, Baltimore, Md., have the contract for an Italian marble vault that it is estimated will cost about \$20,000.

The receiving vault and chapel at Riverside cemetery, Defiance, O., illustrated in the MONUMENTAL NEWS for April, it should have been stated, was built by the Vermont Granite Co., of Lima, O.

Riley Brothers, of Brooklyn, N. Y., completed the glass workers monument at Corning, N. Y., in April. The memorial, which was illustrated in these columns last year, is a Quincy granite arch surmounted by a statue of a glass worker.

The contract for the granite work on the Maissonneuve monument at Montreal was awarded to Robert Reid of that city, for \$5,200. New Brunswick red granite will be used. Five bronze statues to surmount the monument are now being made in Paris.

D. McIntosh & Sons, Toronto, Ont., are putting the finishing touches to one of the finest mausoleums in the Dominion. It is 26'x22'x45' constructed of Stanstead granite on a substructure of Queenston limestone. When the work is completed and photographed a more extended description will be given in these columns.

"An Old Dealer's" article in last month's issue entitled "The Devil's to Pay, etc.," has called forth an expression from "An Iowa Dealer" that appears in this number, and we hope will have the desired effect of enlisting the dealers of that state in a movement looking to the early organization of a marble and granite dealers' association.

Whether or not people are going to save their money to spend at the World's Fair is a matter that is entering largely into the minds of country dealers just now. The purchase of a monument is something that can be put off and with such an attraction as is being presented this year, it will not be surprising if some anticipated sales are held over. The indications, however, are favorable for a good trade.

We have heard of rustling salesmen, says the Grand Traverse Herald, but Riley Sweers, representing Black, Sweers & Co., of Hastings, Mich., is entitled to first place. Friday morning he arose at 4 o'clock, drove two miles into the country, got a man out of bed and sold him a monument before breakfast. Take the medal, Riley. The same paper states that the firm referred to also secured the order for a soldiers' monument at Traverse City, Mich.

Morris Brothers, of Memphis, Tenn., have just completed a vault at Natchez, Miss., for Mr. R. F. Learned, a prominent citizen. The vault is 19-10x12-8 on the ground constructed of Alabama stone rock faced. The interior is finished in Georgia marble and is provided with 16 catacombs. Columns at the entrance, with carved plinths and caps, support a finely carved lintel. A

See our Competitors - - - Fall in Line!

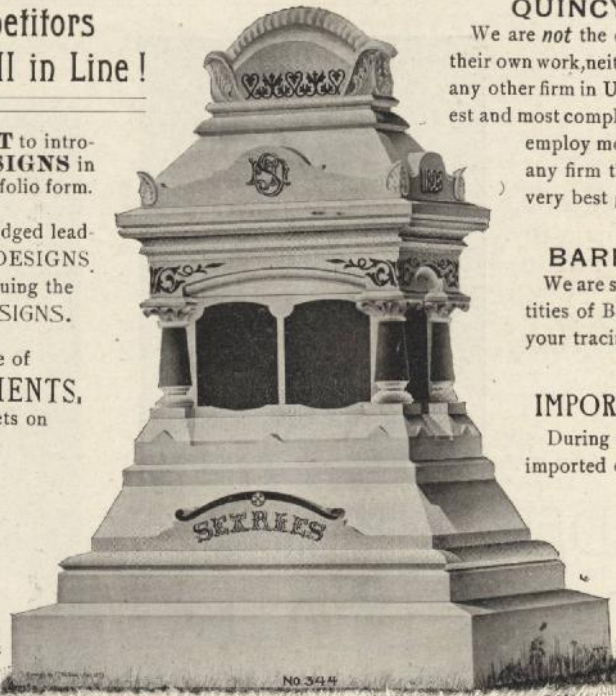
We were the **FIRST** to introduce to the trade **DESIGNS** in Book, Pamphlet or Portfolio form.

We are the acknowledged leaders in new and original **DESIGNS**. We will prove this in issuing the **COLUMBIAN DESIGNS**.

A full and complete line of **STOCK MONUMENTS**. Printed stock sheets on application.

First to introduce the celebrated **Diamond Blue Pearl Granite**,

Superior to any dark granite in the market.



Sample of Columbian Designs, Copyright.

E. C. WILLISON, 110 Boylston St., Boston, Mass.

(Manhattan Building, Chicago, Ill.,
74 Union Street, Aberdeen,
So. Quincy, Mass. Montpelier, Vt.)

circular pedestal at the front end is surmounted by a marble figure of Remembrance holding a wreath of flowers. Including this figure the total height is 24 feet.

The Excelsior Granite Co., Montpelier, Vt., are at work upon a soldiers' monument for Malone, N. Y., which is to be presented by a friend who has thus far not disclosed his identity, to the people of Malone. The monument will stand about twenty-five feet in height, medallions of Washington and Lincoln and several military emblems will be carved on the die and shaft, which is to be surmounted by a granite figure seven and a half feet high. The Excelsior Co. are also contractors for a large receiving vault at the new Kensico cemetery near New York City.

The Masonic Monument Association of Toronto, Ont., have entrusted F. B. Gullett, the sculptor of that city, with an order for a granite monument to be erected in memory of their departed members. The monument will have two bases, a polished die with moulded cap and a polished column on top of which is a granite sphere 2'-2" in diameter with the symbolic square and compass in bronze, set into the sphere. The entire height will be about 25 feet.

Stephen Maslen, Hartford, Conn., is making a monument for the grave of a centennarian who died at Naugatuck, Conn., in April. The inscription reads as follows:

MEHETABEL,
WIFE OF EZRA DAYTON,
Died April 3, 1892,
Aged 104 years, 11 months, 2 days.

The spring trade at Cleveland, O., is unusually good if what is being done by T. C. Myers, of that city, may be taken as a criterion. Mr. Myers' monumental trade is three times larger than ever before at this season and in addition to it he is doing considerable interior marble and building work. An important contract of this nature is the marble used in the interior of the relic room in the Cuyahoga county soldiers' monument at Cleveland. This contract aggregates \$15,000. Considerable of the work will be in tinted marble made especially for the purpose by Mr. Myers.

It is to be regretted that because of the apathy of those who

QUINCY GRANITE.

We are *not* the only firm manufacturing their own work, neither do we ship more than any other firm in U. S., yet we have the largest and most complete plant at **QUINCY**, employ more skilled workmen than any firm there and guarantee the very best grade of work.

BARRE GRANITE.

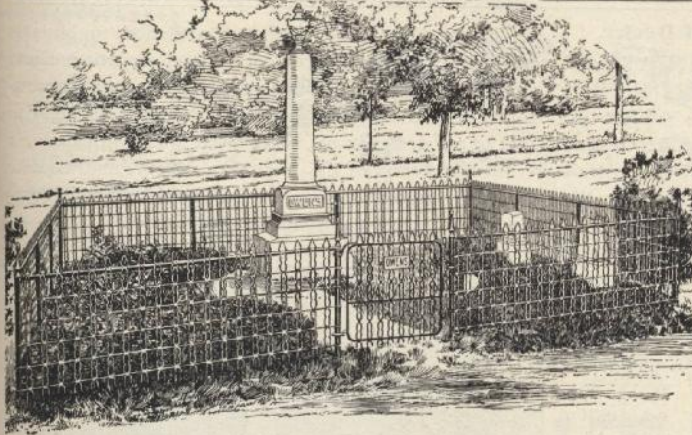
We are shipping enormous quantities of Barre Granite, and solicit your tracings for estimates.

IMPORTED GRANITES.

During the month of April we imported over 125 tons of Scotch, Swede and Pearl Granites, this represented some 200 finished monuments, a number of which still remain in stock. Our prices are as low as the lowest, quality of work considered.

should have shown the greatest interest in the project the idea of holding a congress of marble and granite dealers in Chicago this summer has been abandoned. The occasion would have brought together the representative monument dealers and manufacturers from this country and abroad and would have afforded opportunity for the profitable discussion of many features of the monument business. The casual observer who gives no serious thought to such a project sees nothing in it for himself and consequently is not interested, and right here is the cause of much of the evil that exists at the present time. In all the successful avenues of trade to-day things are conducted on a broad gauge with liberal ideas of progression, but it does not appear that the monument trade as a whole has seen fit to accept this new order of affairs and is content to plod along in the ways of its ancestry. In a letter from a well-known traveling man on the subject of the proposed congress he says: "It is too bad that we cannot arouse enough pride and self respect in the trade to spend a little time, thought and money on something which could not fail to help the standing of the trade."

Up to the time of going to press with this issue of the **MONUMENTAL NEWS** the exhibits of marble and granite at the big fair were not all in readiness, but from the material on the ground enough was seen to insure a large and interesting display. The Vermont Marble Co. exhibit upwards of thirty-five pieces of work, monumental, decorative and building, which it is needless to say comprises some of the finest examples of marble carving that company has ever turned out. The monumental designs are especially attractive, several of them being a pleasing departure from the conventional types with which the trade is so familiar. A unique representation of the fitness of blue Rutland for building purposes is shown and a massive marble mantel forms an attractive feature of the display. The exhibit is in charge of Mr. Hawley, of Proctor; Mr. Thos. F. Burke represents the Quincy granite manufacturers, and Mr. Cutler performs the same duties for the Barre manufacturers. There is eighty tons of granite in the former's exhibit and nearly as much in the latter, both comprise a collection of monuments of various designs, of which mention will be made next month. The exhibit of the R. C. Bowers Granite Co. is between those of Quincy and Barre. In it there are two cap monuments and a sarcophagus, all in Barre granite, in charge of Mr. Remple, of Montpelier, Vt.



Hartman Steel Picket Cemetery Fencing.

**STRONG,
DURABLE,
ORNAMENTAL,
CONVENIENT,
ECONOMICAL.**

**THE FENCING FOR LARGE GROUNDS OR PRIVATE
LOTS. MONUMENT DEALERS CAN HANDLE
IT PROFITABLY.**

PRICE-LIST HARTMAN STEEL PICKET FENCE.

| STYLE. | Height. | Size of Pickets. | Distance Between Pickets. | Number of Cables. | Size of Wire (2 strands) in Cables. | Price per Lin. Foot, Galvanized. | Price Per Lin. Foot, Painted. | "Close" Fence 2 in between Pickets, Price per lineal ft. | |
|----------------|---------|------------------|---------------------------|-------------------|-------------------------------------|----------------------------------|-------------------------------|--|----------|
| | | | | | | | | Galvanized. | Painted. |
| No. 1 Standard | 37 in. | No. 6 Wire. | 3 in. | 5 | No. 12 Wire. | 19 cts. | 16 cts. | 24 cts. | 21 cts. |
| Spear or Round | 37 " | " | " | 6 | " | 21 " | 18 " | 25 " | 23 " |
| Top Lawn Fence | 43 " | " | " | 7 | " | 24 " | 21 " | 30 " | 27 " |
| | 49 " | " | " | 8 | " | 28 " | 25 " | 35 " | 33 " |

Our No. 3 Round Top Field made of No. 8 wire costs from 5c to 8c less per lineal foot. Single Walk Gates 30 in. or 37 in high, 3ft. wide, \$3 50. 42 in. and 48 in. high, 3 ft. wide, \$4.50. Gate and Corner Posts, \$2.25. Line Posts, 80 cts. Name Plates for Gates, \$1.50 each. When ordering state "Round" or "Spear" top, height of picket, and whether galvanized or painted. Full and explicit directions for setting are furnished. We also manufacture Drive Gates, Tree and Flower Guards, Hitching Posts, etc., and solicit correspondence with Monument Dealers. Catalogues sent on application.

HARTMAN MANUFACTURING CO.,

New York, 102 Chambers St.
Chicago, 508 State St.
Atlanta, 51 & 53 S. Forsyth St.

Works, BEAVER FALLS, PA.

Recent Legal Decisions.

LIABILITY ON ACCEPTANCE OF GOODS NOT ORDERED.

Though a person may not order goods, yet if he takes them out of the possession of the carrier and has them hauled to his own place of business, instead of notifying the shippers of their mistake in sending them to him, or declining to receive them from the carrier; in other words, if he receives and appropriates such goods he is bound to pay for them, whether he made any bargain for their purchase or not.

Indiana Manufg Co. v. Hayes Supreme Court of Pennsylvania. 26 At. Rep. 6.

WHEN THE QUITTING OR THREATENING TO QUIT AN EMPLOYMENT IS UNLAWFUL.

It is said that it cannot be unlawful for an employe either to threaten to quit or actually to quit his employment when not in violation of his contract, because a man has the inalienable right to bestow his labor where he will, and to withhold his labor as he will. Generally speaking this is true, but not absolutely. If he uses the benefit which his labor is or will be to another, by threatening to withhold it, or agreeing to bestow it, or by actually withholding it or bestowing it, for the purpose of inducing, procuring or compelling that other to commit an unlawful or criminal act, the withholding or bestowing his labor for such a purpose is itself an unlawful and criminal act. The same thing is true with regard to the exercise of the right of property. A man has the right to give or sell his property where he will; but if he give or sell it or refuse to give or sell it, as a means of inducing or compelling another to commit an unlawful act, his giving or selling it or refusal to do so, is itself unlawful.

Toledo, Ann Arbor & N. M. R. Co. v. Pennsylvania Co. U. S. Circuit Court, Ohio.

LIEN OF ARTISANS AND MECHANICS FOR LABOR BESTOWED ON PERSONAL PROPERTY.

It is undisputable that an artisan or mechanic who by his

labor enhances the value of the personal property or goods of another has a lien for his agreed or reasonable charges, which extends to all of such property or goods delivered to him under one contract, and that the return of part of the goods does not impair the lien for the labor bestowed thereon as against the property or goods remaining. But, to enable him to acquire the lien, it must appear that the person from whom he obtained possession of the property or goods, was authorized to dispose of the same for that purpose, either as owner or with the owner's consent, express or implied. And it has been held that a mechanic who is employed by another, with whom the owner has contracted for work upon a chattel, can not claim a lien in his own right, as against the owner, for the value of his share of the work performed; and this, notwithstanding the fact that the owner knows that he is performing the work while it is in progress.

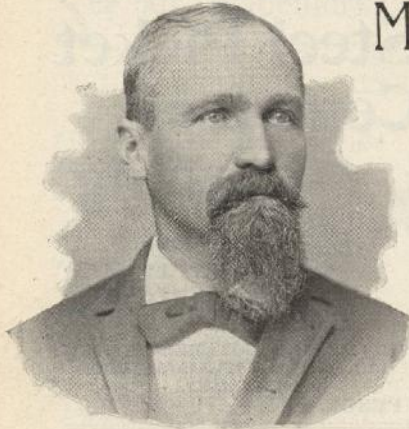
Gluckman v. Kleiman. Court of Common Pleas of New York City and County. 22 N. Y. Sup. 549.

COMBINATIONS OF LABORERS TREATED AS COMBINATIONS IN RESTRAINT OF TRADE.

The United States statute prohibiting monopolies and combinations provides that every contract or combination in the form of trust or otherwise in restraint of trade or commerce among the several states, or with foreign nations is illegal. This interdiction includes combinations of capital and labor as well as in fact all combinations in restraint of commerce, without reference to character of the persons who enter into them. The meaning of the statute, so far as relates to the sort of combinations to which it is to apply, is manifest and includes combinations which are composed of laborers in the interest of laborers. Where a combination setting out to secure and compel the employment of none but union men in a given business and as a means to effect this compulsion enforces a discontinuance of labor in all kinds of business, including the business of transportation of goods and merchandise through a city from state to state and to and from foreign countries, such a combination is in restraint of commerce. When lawful associations take on unlawful purposes and do unlawful acts the associations themselves become unlawful.

United States v. Workingmen's Amalgamated Council of New Orleans. United States Circuit Court.

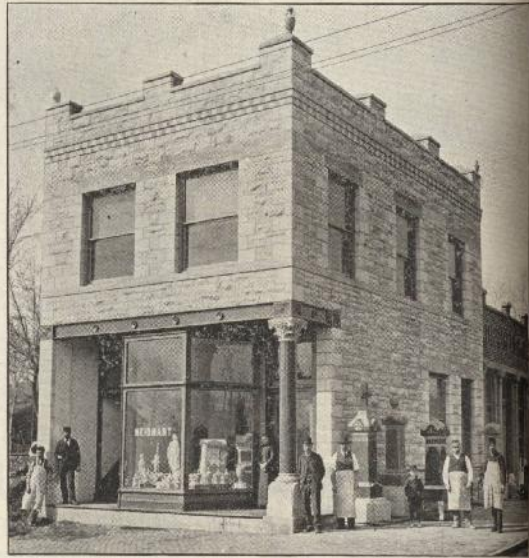
A Progressive Western Monumental Dealer.



CHAS. NEIDHART, BEATRICE, NEB.

MR. CHARLES NEIDHART, the subject of this sketch and whose portrait many of the MONUMENTAL NEWS readers will be pleased to see, was born in Hesse Darmstadt, Germany, fifty years ago. He came to America in 1851 and with his grandparents located in St. Louis, Mo., twice since then he has returned to the fatherland, the last time in 1865, when he went to Frankfort-on-the-Main, where he took a two year's course at the Industrial and Art School. Mr. Neidhart took his first lessons in marble cutting with M. D. Halpin, at Beardstown, Ill., in 1862, and five years later on returning from Germany entered into partnership with him. The next year, following the star of empire, Mr. Neidhart journeyed westward and located at Brownsville, Neb., where he established the third marble shop in the State, and later on opened branch yards at Falls City and Tecumseh. In the development of the country it soon became evident that Beatrice would outstrip Brownsville in the race for supremacy and in 1888 Mr. Neidhart transferred his headquarters to that city and has enjoyed a constantly increasing trade ever since. A short time ago he completed the handsome building which we illustrate, and in which he is now doing business. The building is 25 x 48½ feet and is built of Southerland Falls and blue Rutland marble, the latter being used only in the trimmings. The first floor forms a commodious and well lighted salesroom, where a handsome collection of marble and granite monuments is displayed to good advantage. A counter of ingenious design separates the office from the salesroom, it is panelled with slabs of various colored marbles artistically arranged. The upper story is divided into offices and the basement is finished off for storage purposes. The workshop is situated in the rear of the new building, here several marble and granite workmen are constantly engaged. Mr. Neidhart furnishes employment to twenty persons at his home and branch shops, and it is interesting to note that two of them are young lady members of his own family. The affairs of the office, book-keeping, correspondence, etc., is looked after by Miss Sophia Neidhart, and her sister Miss Louise, is an expert letterer and carver and does a good share of the fine work

on inscriptions, etc. By close attention to business which he always endeavors to conduct on true business principles, Mr. Neidhart has established a very successful trade and enjoys a degree of popularity second to that of no dealer in his State. He was a prime mover in the formation of the Nebraska Marble and Granite Dealers' Association, was its first president and is now vice-president of the Southwestern district.



NEIDHART'S BUILDING, BEATRICE, NEB.

ON THE ROAD

Genial John Cochran is just recovering from a severe spell of sickness which has confined him to his home since last Christmas. He will not be able to resume the road for some months, but writes that he begins to feel that he is "on earth again."

Do not forget that the MONUMENTAL NEWS offices are now located in the Caxton building, 328 to 334 Dearborn St. When you are in town come and see us.

John Batchelder who represents several eastern marble companies, makes Dixon, Ill., his permanent headquarters.

Charles J. Field, representing the Chicago branch of the Vermont Marble Co., was in Chicago last month and reports having had an excellent trade. Mr. Field has the credit of selling the marble used in Mr. Charles Neidhart's new building at Beatrice, Neb., which is illustrated on this page.

Edward McLane has embarked in the granite business on his own account with headquarters at Springfield, Ohio.

Subscribe for the MONUMENTAL NEWS, \$1 a year.

OUR
SPECIALTIES
—♦—
DARK
HILL O' FAIR
DARK
PETERHEAD

ALEXANDER FRASER,
MANSFIELD, O.

EXCLUSIVELY
WHOLESALE

MANUFACTURER & WHOLESALE DEALER.

IMPORTER OF

SWEDISH, SCOTCH AND NORWEGIAN

GRANITES.

IMPERIAL BLUE, RED LABRADOR, HILL O' FAIR,
EMERALD PEARL, DARK RED SWEDE, PETERHEAD,
AND ALL THE LEADING AMERICAN GRANITES AND MARBLES.

FOREIGN OFFICE,
45 ESSELMONT AVE.,
ABERDEEN, SCOTLAND.



WORKS, Address,
ALEX. FRASER & CO.,
BARRE, VT.

To Iowa Dealers.

Having read the MONUMENTAL NEWS for over a year I have watched with much interest the articles therein on the subject of competition. In the April number an article appears headed the "Devil to Pay" which is a very appropriate heading. To me it seems that retail dealers are more to blame than the wholesale dealers for the spirit of competition which now prevails. We as dealers have brought a feeling of antagonism to each other, and we feel now that the other fellow is a rascal and will take undue advantage of us, although we may never have seen our competitor, we know he is a rascal for he did this and that, still had we been in his place we doubtless would have done the same thing and consider them all right if by so doing we had got the job. I believe as a rule marble dealers are accepted in as good society as their city affords. They are, I think, treated courteously by their acquaintances in their territory. If this is a fact why are we all rascals and why should dealers brand their competitors as such? You will answer because of actions referred to in the article "The Devil to Pay." Admitting this evil how are we to remedy it?

My thought is this, to visit our competitor, get personally acquainted with him, take our family to see his, and thereby come to know one another, and should we have grievances talk them over, for I believe by so doing they will be made more bearable than by telling some outside party, who glories in getting up strife and

malice, perhaps for his own gain or at least for reasons that are not profitable to the retailer. The dealers who live in States that have associations ought to feel proud of them for I believe much good can be derived from them, for they bring about the much desired intimacy. I do not favor stopping at State associations, but would suggest having local associations to meet at least three times a year, comprising six or eight counties. My point is that we should endeavor to know each other better, and to establish among us principles of honor to which we should give close attention. If there is such a competitor in our district as the "Devil to Pay" man speaks of, we can by true business principles drive him to other quarters, here is where the wholesale dealers can help and I am sure from personal talks with them and my knowledge of their association they will do their part in this work. Why should not Iowa have an association as well as other States? I think that this should be the first step to take, and would suggest that there be a general meeting in the dull months of summer to form a State association, and then that all work earnestly, and I feel confident that in a short time we can raise the marble and granite business up to a much more profitable condition than now exists and thus put it on an upward move instead of a downward slide as at the present time.

I believe the MONUMENTAL NEWS will publish any articles that may be written on this or any other point of interest to its readers, and I do not think any dealer can afford to do without the NEWS. I for one, would like to hear from Iowa dealers through this paper. Let us help ourselves by helping others.

AN IOWA DEALER.

THIS SPACE IS RESERVED FOR
E. M. WOLFF & CO.,

Importers and Manufacturers, Barre, Vt., Mansfield, Ohio.

Owing to pressure of business they have been unable to have their engraving and copy completed in time for this issue, See their announcement next month.

A Rutland correspondent furnishes the following description of a marble clock and miniature castle made by George F. Glaney, of Rutland, and now on exhibition at the World's Fair: The castle, which is five feet long, three feet wide and two and a half feet high, rests on a blue marble slab, finely polished, with an underpinning made of over fifty kinds of marble found in Vermont and Italy. The castle proper is made of blue marbles and many kinds of onyx, which have been collected from the four corners of the world. The front portion, on both sides of the main entrance, consists of inlaid work in various kinds of marble and onyx. The steps leading to the main entrance and the trimmings of the entrance are constructed of blue and variegated marble and onyx. There are two marble pillars on both sides of this entrance, and there is also a side entrance. The castle has two towers, the larger one to contain a chime of bells and the smaller one a clock. The clock is another work of art, and is valued at \$400. The roof of the castle represents a fort, having a wall on all sides, in which are port holes, each of which is supplied with a miniature cannon. The castle as a whole is perfect in architecture, beautiful in design, and a marvel of ingenuity and skill. From underpinning to towers everything is perfect, and a careful combination of colors in the selection of the materials gives a beautiful effect.

POINTS ON GRANITE.
 No. 10.

SCOTCH GRANITE.

The demand still keeps up and anticipating this, we have laid in a large stock of well assorted monuments, made to order, not defective rejected monuments, but goods up to our usual standard, consisting of Sarcophagus—Cottage and Gothic, in Hill'o'fair and Rose Swede Granites at popular prices.

Good goods cost a trifle more to be sure, but the satisfaction to the dealer and the customer more than offsets the extra cost.

When in need of stock or ordered work, correspond with us.

JONES BROTHERS.

Granite Manufacturers.

Main Office, 53 and 55 Kilby Street, Boston, Mass.
 Western Office, Tacoma Building, Chicago, Ill.
 Quarry and Works, Barre, Vt.
 Foreign Office, Aberdeen, Scotland.



ARE YOU LOSING TIME AND MONEY by not having an **AIR BRUSH** in your designing room?



L. P. Jones of McConnellsville, O., says that he wouldn't take \$1,000 and do without his.

You can get a catalogue and sample of work by addressing

AIR BRUSH MFG. CO.,

145 Nassau Street, - - - - - ROCKFORD, ILL; U. S. A.



AIR BRUSH,
Trade Mark.



Directors:
D. W. MOIR, Pres.
C. N. BRADY, Vice-Pres.
G. H. HOUSE, Sec.-Treas.
SIDNEY STEVENS.
C. A. PROUTY.
 INCORPORATED.
 Paid-Up-Capital \$100,000.00

The
 Moir
 Granite
 Company

Post Office Address,
NEWPORT, VT.
 Quarries,
BEEBE PLAIN, P. Q.
 Branch Office,
DETROIT, MICH.,
 916 Sixteenth St.,
M. S. DART, Mgr.

MONUMENTS, BUILDING STONE, PAVING BLOCKS AND ALL KINDS OF GRANITE WORK.

A Statue With a History.

A copy of Houdon's statue of Washington, which stands in the capitol at Richmond, is a conspicuous object on the Riverside Drive, New York. Some time before the rebellion the Virginia legislature authorized the German sculptor Gunthermann, to make this copy and from this four casts were made. Just after the war the sculptor's widow brought it to New York and placed it on exhibition in one of the public halls. She wanted to sell it to the city for one of the parks. Her price was \$10,000. It was very cheap for such a piece of art, but the offer was declined by the city authorities, and it was finally decided that a subscription should be opened among the children of the public schools to make up the purchase money in sums of a dime or less. After considerable exertion \$5,000 was raised, and there the matter stood until the widow agreed to accept that sum and to give a bill of sale to the city. Some years later it was set up in the park and dedicated by the school children on July 4th.

Soil is now being hauled from Fort Washington, more than three miles up the river, to complete a bastion front for the statue, and congress will be asked to donate two or more revolutionary cannon to place at the angles. This fort was the first geographical point to be named for Washington. This bastion when completed will be an exact duplicate of one of Alex. Hamilton's bastions at the old fort.

ADAMS & BACON,

WHOLESALE MARBLE,
 SAWED AND FINISHED

BRANDON ITALIAN
AND FLORENTINE BLUE.

PROMPT SHIPMENTS.

MIDDLEBURY, VT.

Cemetery Ironwork!

WROUGHT IRON PIPE, ORNAMENTS, WASHERS, TASSELS, CHAIN, GATES, VAULT GATES, FLOWER VASES, STATUARY.

The North American Iron Works,

WORKS, Walton St.,

BROOKLYN, N. Y.

(Write for our circular of Americas and Columbus Settees.)

METAL WORKERS.

IRON, ZINC, BRASS, BRONZE.

CATCHY PRICES don't buy the **BEST STOCK** and **WORKMANSHIP**.

YOUR ultimate satisfaction is what we care for.
WITH a resident buyer at **ABERDEEN**, a shipper at **BARRE, BOSTON** and **CONCORD** to watch our interests at those points we are enabled to quote and ship a **QUALITY** of work that will please our patrons.
WHY not try us on your next order for **BARRE, CONCORD, SCOTCH** or **SWEDE**?
ESTIMATES cheerfully furnished on application.

F. S. CARY & CO.,
Exclusive Wholesalers of Granite and Statuary,
ZANESVILLE, OHIO.

(Monumental Bldg.)

J. F. TOWNSEND,

SCOTCH, SWEDISH, BLUE AND EMERALD PEARL.

AMERICAN GRANITES and ITALIAN MARBLE STATUARY.

Foreign Offices {Aberdeen, Scotland.
 Carrara, Italy.

Clinton Bldg. COLUMBUS, O.

RED SCOTCH,
 RED SWEDE,
 RED BEACH
 QUINCY.

New York Granite Co.,

BARRE,
 CONCORD,
 WESTERLY
 GRANITES

IMPORTERS AND WHOLESALEERS.

MONUMENTAL WORK.

BUILDING WORK.

POLISHED GRANITE COLUMNS.

Italian Statuary, Granite Statuary. Work Guaranteed. Quick Shipments. Do not fail to get our Prices.

67 West 23d Street, NEW YORK CITY.

Trade News Among Our Advertisers.

WRITE McDonnell & Cook, Quincy, Mass., for sketch and price of a fine Westerly sarcophagus that they have in stock and will sell for less than cost.

I HAVE on hand ready for immediate delivery an Italian marble statue of soldier at "Parade Rest" 5 feet in height. E. C. WILLISON, 110 Boylston St., Boston.

VISITORS to the Chicago office of Mr. E. C. Willison during the World's Fair will be presented with a souvenir that they will be likely to appreciate. Mr. Willison always designs to do the right thing for his friends in the trade.

MILNE & WYLLIE, Barre, Vt., whose quarry buildings were destroyed by fire in March, expect to have their machinery in operation early this month when they will be prepared to meet any and all demands for their excellent dark stock.

DINGLE, ODGERS & Co., manufacturers of granite monuments, etc., at Sunapee, N. H., have assumed the lease of the Sunapee quarries held until recently by Mr. John Keast, the latter gentleman having gone into other business.

THE firm of Foster & Richards, monumental designers at Quincy, Mass., has been dissolved. Mr. W. A. Richards will continue at the old stand, and Mr. Foster has accepted a position as draughtsman for Badger Brothers, West Quincy.

E. T. BARNUM, manufacturer of wire and iron work, Detroit, Mich., extends an invitation to his many

patrons in the monument trade to visit his wire house in the Manufacturers' Building when they go to the World's Fair. The exhibit is in the extreme northwest corner of the building.

J. W. GOODELL, of Burlington, Vt., has bought out the interest of his partner, Mr. Harding, in the manufacture of the Portable Box Bander. The Bander has proven itself a very desirable implement with those who have any box or crate making to do and it is growing in popularity. The bander makes all kinds of boxes absolutely secure and will be found very valuable in stone yards and packing rooms.

ONE of the largest hoisting machines ever built was recently completed by J. S. Mundy, of Newark, N. J., for the Shaler & Hall quarry, Portland, Conn. The machine has a 42-inch drum and a gear six feet in diameter with an eight-inch face. Two engines with 14-inch cylinders and 24-inch stroke furnish the motive power. The boiler is of the upright tubular type, it is made of steel, is 6½x14 feet and has 250 two and one-half inch tubes. The machine, it is claimed, will raise ten tons 200 feet in one minute's time.

ONE of the sights of the Exposition is the great Ferris wheel, which is regarded as a triumph of engineering skill. The wheel is 264 feet in height and to it are suspended 36 large passenger coaches capable of holding sixty persons. Twenty minutes will be required to make one revolution of the big wheel which promises to be as great an attraction as was the Eifel tower at Paris. It is interesting to note that the material used for hoisting the wheel was furnished by H. Channon & Co., of Chicago. Twenty-four-inch blocks were used.

PATRONS of Mr. A. A. Spadone connected with the firm of Spadone & Cabaret, brass and bronze workers, will be pleased to know that he is still in the business and associated with his brother Mr. W. W. Spadone, who has had a large plant and foundry running for years in Brooklyn, N. Y. The new firm name will be The Calumet Bronze Works.

E. C. WILLISON, of Boston, is offering prizes aggregating \$100, for the best original practical designs submitted before June 10th, 1893. The prizes are as follows:

- \$20.00 for design of best column die sarcophagus.
- 20.00 " " " " " " urn monument.
- 15.00 " " " " " " spire monument.
- 15.00 " " " " " " statue monument.
- 10.00 " " " " " " rock face sarcophagus.
- 10.00 " " " " " " double tablet.
- 5.00 " " " " " " single tablet.
- 5.00 " " " " " " marker.

All designs to be drawn 1 1/2 inch scale, front and side elevation or perspective, the designs to be submitted to a committee of three practical retail granite dealers, who will award the prizes as above. Those who submit designs are requested to write full name and address on bottom of each design and forward to E. C. Willison, 110 Boylston street, Boston.

J. E. O'BRIEN, representing Tabor & Co., H. A. and R. C. Bowers, Montpelier, Vt., C. J. Field, of the Vermont Marble Co., Emerson Brush, Hardwick, Vt., and J. H. Reardon, Buffalo Gap, So. Dak., were in Chicago last month.

Let It Be So Recorded.

On March 29th, I sent an order to the Blue Mountain Granite Works, South Ryegate, Vt., of a peculiar shaped piece work which was to be shipped in ten days from receipt of order. This morning, April 10th, I am in receipt of a bill of lading showing shipment April 7th. This promptness is so wonderful I desire to commend this granite company to the trade in general, and hope other wholesale dealers will profit by the example and not keep retail dealers waiting for months for work which can be furnished in a few days time.

Yours, etc., I. H. KELLEY.

NEW FIRMS, CHANGES, ETC.

Mr. Crombie, Ayer, Mass., sold out to O'Toole & Allen. Walter Graveson succeeds Isaac Graveson, at Cincinnati, O. R. W. Robinson, Bergen, N. Y., has removed to LeRoy, N. Y. Dissolved: Brenelle & Hellstearn, Dundee, Mich.; Griebel, Park & Becker, Ft. Wayne, Ind.; Tower & Vancke, Esperance, N. Y.; Lewis Tower continues.

Deceased: Almon Brown, Cherry Valley, N. Y.; Frederick Fick, Philadelphia, Pa.; W. R. Smith, of Smith & Madden, Auburn, Ind.

New firms: Brian & Devine, Salem, Ind.; Coles & Everson, E. Liverpool, O.; J. P. Gruger, Lancaster, Pa.; Wm. Warfell, Currensville, Pa.; Frank Wood, Jr., Albany, Oregon.

Emerson Estabrook, of Manchester Centre, has bought the J. I. Loomis marble shop at Bennington, Vt.

The following firms have been incorporated: Devil's Lake Granite Co., Chicago; capital stock, \$100,000. Fox Island Co-operative Co. of New Haven, Vt.; capital stock, \$10,000. Concord Granite Co., Concord, N. H.; capital stock, \$1,400.

T. C. Golding, Houston, Tex., filed trust deed, and effects are being sold to satisfy claims.

Grant & Wortman, not Graham & Wortman as stated in last month's paper, succeed Grant & Shoudy Bros. at Atlantic, Iowa.

Conestoga Quarry Company (Limited.)

JOANNA, BERKS CO., PENN.

Penna Green Stone } The only Quarry in the United States. Has been in operation 100 years.

Conestoga Sand Stone } A rare and beautiful rose colored Sand Stone, magnificent for Ashlar work.

Conestoga Marble } Found in three colors, white, pink and chocolate, fine for interior work, and cheap enough for ashlar.

Conestoga Granite } A squirrel gray syenite, found in immense masses. Polishes well, and can be sold very cheap.

Send for samples and prices, J. H. BRINTON, Pres. THORNBURY, P. O., PENN.



MILNE & CHALMERS, Quarry Owners and Manufacturers of

QUINCY GRANITE,

MONUMENTAL WORK, Of Every Description.

STEAM :: POLISHING :: WORKS.

QUINCY, - - MASS.

JOHN LAVERS, AGT.

P. D. DRISCOLL, TREAS.

Merry Mount Granite Co.,

(Incorporated 1881.)

Quarry Owners and Manufacturers of Monuments, Statuary and Cemetery Work, from light and dark

QUINCY GRANITE,

And all kinds of New England Granites.

The Trade supplied with Rough Stock Estimates on Application.

Works-Quincy Adams Station,

Quincy, - Mass.



RICHARD OPIE,

Manufacturer of

Monumental Work

FROM

Westerly - Granite,

Lettering and Carving a Specialty.

All orders promptly attended to and first-class work guaranteed.

WESTERLY, R. I.



DROP US A LINE

IF YOU WANT ESTIMATES ON MONUMENTAL WORK.

DEACON & BROTHERS,

Manufacturers and Dealers in all kinds of NEW ENGLAND GRANITES.

109-115 CENTRE STREET, QUINCY, MASS.

MONUMENT SETTER.

GEO. ARCHER,
652 NOBLE AVE., - CHICAGO,
Vaults and Heavy Work a Specialty.
SATISFACTION GUARANTEED.

NEW WESTERLY GRANITE WORKS



P. N. MATHESON,
Proprietor.

Manufacturers and
Dealers in

ALL KINDS OF
WHITE
GRANITE

MONUMENTAL

AND
BUILDING WORK,
MILFORD, N. H.

Lord Fauntleroy is like a real boy. It marks the community as one which has earned the right to expend money on the superfluities and embellishments of life before becoming cultivated enough to exercise that right properly. But this is not always the case. Sometimes the ugly soldiers' monument is very far from representing the tastes of the better intellects of a given town; it exists because the town has not cared enough or known enough to place the responsibility in the hands best fitted for it. It is a result of the hallucination peculiar to democracies, which consists in assuming that pretty much any citizen is, or can soon make himself fit for pretty much any position or task.



J. H. BISHOP & CO.
MANUFACTURERS OF
GRANITE MONUMENTS.
ESTIMATES CHEERFULLY GIVEN
Satisfaction guaranteed.
LOCK BOX 4, WEST QUINCY, MASS.

PATENTS

procured in the United States and Foreign Countries. Trade Marks, designs, labels, and copyrights. Send description, with model, photograph or sketch, and we will let you know whether you can obtain a patent. All information free.
W. E. AUGHINBAUGH & CO.,
908-914 "G" St. N. W. Washington, D. C.

THOS. F. BURKE & BROS.,

Manufacturers of Fine
QUINCY GRANITE
MONUMENTS.
Dealers Only Supplied. Correspondence Solicited.
Willard Street, - West Quincy, Mass.

STATUARY

Of all kinds for Cemetery or Lawns, made to order for less than 1/2 the European prices, carved from Buffalo Gap statuary stone (White or Pink). No extra charge for original designs or work made from Photographs.

J. H. RIORDAN,
300 8th Ave., New York.

It is a mournful reflection upon the level to which the art sense of the United States is depressed, says a writer in *Frank Leslie's Weekly*, this recurrence of the tall pedestal or column surmounted by the stiff figure of a volunteer—who is about as like the brave fellows who sweated and shivered and fought, and sometimes ran away, as Little

Vases, Settees, Chairs,

LAWN FURNITURE
TUBULAR FENCES.
GRAVE GUARDS.
Manufactured by
E. T. BARNUM,
DETROIT, MICH.
Mention Mon. News. Send for illustrated catalogue FREE.



A. M. DEAN & CO.,

QUINCY
GRANITE

Monumental
Work.

Quincy, - Mass.

MADISON PINK GRANITE

QUARRIED AND MANUFACTURED BY

LEWIS D. GUMB,

Wholesale Monument Dealer in New England Granite, Lowell, Mass.

A. MARNOCK & CO.,
HEADQUARTERS FOR
Scotch, Swede,
and all American **GRANITE.**
SOUTH QUINCY, MASS.

THE MONUMENTAL NEWS, - - One Dollar a Year

GRANITE RAILWAY COMPANY,
PROPRIETORS OF THE CELEBRATED
QUINCY RAILWAY GRANITE,
 ALSO CONCORD, N. H. QUARRIES,
Principal Office, 166 Devonshire St., Boston, Mass. Quarries, West Quincy, Mass., Concord, N. H.

Colorado marble will be used in the construction of the new government building at Omaha. The work of quarrying the same will give employment to 150 men for eighteen months.—Aspen Times.

MONUMENTS FROM THE FAMOUS HARDWICK STOCK
 Should be ordered direct from
FRANKLIN HARDWICK & SONS,
Dealers in
 Rough, Hammered and Polished Granite,
QUINCY, MASS.



IRON
 RESERVOIR VASES,
 LAWN SETTEES,
 AND CHAIRS,
 ARE MANUFACTURED BY
McDONALD BROS.,
 COLUMBUS, OHIO.
 The Largest Manufacturers of these Goods in the world.
 We issue a large Illustrated Catalogue. Sent free on application.
 Mention MONUMENTAL NEWS.

Field & Wild, QUARRYMEN,
 Dark Blue Quincy Granite.
 Rough Stock, Monumental and Cemetery Work.
 The superior qualities of our granite have long been recognized by the trade.
Quincy, Mass.



Glencoe Granite Co.
Mfrs. of
 DARK AND LIGHT
Quincy Granite
 AND ALL
 EASTERN GRANITES.
Quincy, Mass.

West Quincy
 Monumental Works.

T. F. MANNEX,
 Mfr. and Dealer in
 Plain and Ornamental
GRANITE
 MONUMENTS.



All Work Guaranteed Satisfactory.

West Quincy, Mass.

Always mention THE MONUMENTAL NEWS when writing to advertisers.

Marble and Granite Dealers
 From Maine to California read the
 MONUMENTAL NEWS.

McINTOSH & SON,
Manufacturers of all kinds of
MONUMENTAL WORK.
 FROM ALL GRADES OF QUINCY AND OTHER GRANITES.
 Estimates cheerfully given. Columbia St., SOUTH QUINCY, MASS.

WM. T. SPARGO,
Manufacturer of
Monuments, Statuary,
 And Cemetery Work of Every Description
 SO. QUINCY, MASS.

WILLIAM CALLAHAN,
MANUFACTURER OF
Monumental Work, From All Grades Of
QUINCY and other GRANITE.
 Send for Estimates.
 34 QUINCY AVENUE, QUINCY, MASS.

McDONNELL & KELLEY,
 MANUFACTURERS OF **QUINCY** and other **NEW ENGLAND Granites**
 QUINCY, MASS.

Adams Granite Works,

George McFarlane, Propr.

Manufacturers of

Monuments,
Statuary

And all kinds of cem-
etry work from
Dark, Medium
and Light

QUINCY GRANITE.

Best stock and workmanship
guaranteed.

Correspondence
Solicited.

Office and Works

FENN STREET,
QUINCY, - MASS.



F. Barnicoat

GRANITE

STATUARY
PORTRAIT

AND

IDEAL FIGURES.

We have a number of
models of Soldier and oth-
er Statues and are pre-
pared to do good work at
reasonable prices. Can
furnish references when
desired.

QUINCY, MASS



JOSS

BROTHERS,

Manufacturers of

Quincy Granite,

Monumental Work

of Every Description

Correspondence with
the trade solicited.

10 Garfield St.,

Quincy, Mass.

DON'T FORGET TO MENTION THE MONUMENTAL NEWS

ATTENTION DEALERS.

MCDONNELL & COOK,

MANUFACTURERS AND WHOLESALE
GRANITE DEALERS!

Better facilities than ever for handling spring work. Send sketches for prices.

SPECIAL ATTENTION GIVEN ALL ORDERS.

78 Water St., Quincy, Mass.,

MCDONNELL & COOK.

From our regular correspondent.

QUINCY, MASS.

There was a slack spell in the business the first of the month, but towards the latter part the outlook was much better. Decoration Day orders are keeping the retailers on the jump and the business in this respect has far exceeded that of last year.

Milne & Chalmers are making a reputation on all polished work and have now three large all polished monuments under way. Two are of excellent dark Quincy stock and the other is of Braintree red granite; one with a 7-foot bottom base with heavy moulding and carving makes a very pretty sarcophagus that is to be erected in a Newton, Mass., cemetery.

Fegan & Ballou are cutting one of the largest shaft monuments that was ever shipped from this city. McIntosh & Sons are cutting another large one.

E. F. Carr & Co. have shipped the 12 large polished stones for the pediments of the columns which are to flank the Brooklyn triumphal arch. There are six stones in each pediment which measures 12 feet square. This firm also furnishes the pedestals for the Samuel Sloan monument which is to be erected in New York city. It will be surmounted by a bronze figure of the well-known railroad president by Sculptor G. E. Bissell. Another pedestal is the one for the bronze medallion of Col. Tufts lately made by Sculptor Richard E. Brooks, of Quincy. Besides this work, E. F. Carr & Co. have on hand a large number of orders for jobs of various sizes and are cutting two large figures, a heroic one of Faith and a life size of a mother and babe. A most striking monument, that is artistic, perhaps owing to its plainness, is the Col. Henry Lane Kendrick memorial just finished by John Thompson & Sons. It comprises

two heavy stones, the bottom base being 7-2x3-10x2-2 and the die 6-2x2-8x2-6. It is all rock-faced work with the exception of the two polished panels on the die and one on the base. It is to be erected in the military cemetery at West Point, N. Y., from which place Mr. Kendrick graduated in 1835 and where he was a professor until 1847. On the base is the family name "Kendrick" and on the front panel of die is inscribed his obituary. A \$5,000 cottage monument is another large and fine looking job that this firm has on hand. It is a private monument, but considerable publicity is attached to it inasmuch as it is to be located near the entrance of a Connecticut cemetery just dedicated and on a lot reserved for it by the trustees. It stands over 20 feet in height and has a 9x9 bottom base. A large draped polished urn surmounts it. There is a polished die with the bases and capitals of the columns cut solid and a polished frieze. These two monuments are of the finest Quincy granite.

Swingle & Falconer are busy, and that means they are just rushing things. Their order book shows that they are getting a good share of the work here.

E. J. Qualey & Co., South Quincy, have established a reputation with the trade for good workmanship and prompt shipment of orders. They appear as adventurers in the News this month and go before the dealers with excellent recommendations.

The Deacon Bros. have a large amount of rough stock on hand and have preparations for any rush in orders.

F. Barnicoat has several figures on the blocks and is doing some nice column carving. William Callahan has increased his quarters on Quincy avenue and an increase of business has come with it. He has several good-sized jobs on hand and reports the outlook of business as good.

QUINCY GRANITE



S. HENRY BARNICOAT,

DEALER AND MANUFACTURER

Prices quoted on all classes of Monumental work. Stock from best quarries only. Dealers wanting orders filled at short notice will save time by writing me for estimates. I guarantee first class work and prompt shipment, at fair prices.

Correspondence solicited.

Quincy, Mass.

IN THE DARK

Medium and light Quincy granite monuments we have already established ourselves with the trade as a firm which furnishes only the best of stock and workmanship. We make a specialty of Quincy granite in all our monumental work, and can furnish the best quality from our quarry. With larger quarters and increased facilities for handling work we now extend an invitation to the dealers in general to send to us for estimates and we guarantee satisfactory work and prompt shipments. We have several stock monuments on hand that can be shipped immediately. Write for particulars.

E. J. QUALEY & CO.,

GRANITE MONUMENT DEALERS,

Branch Office, PORTLAND, OREGON.

QUINCY, MASS.

W. BURKE, Manager. T. O'KEEFE, Treasurer.
NORFOLK GRANITE COMPANY,
 MONUMENTAL AND BUILDING WORK, FROM ALL NEW ENGLAND GRANITES.
RED BRAINTREE GRANITE
 FROM OUR OWN QUARRIES A SPECIALTY.
 Our Red Granite is Superior to any of the Foreign or Native Granites for Monumental and Building Work.
 WORKS:---Copeland St., QUINCY, MASS. QUARRY:---BRAINTREE, MASS.

ADVERTISE ▲ ▲ ▲
 Your business in the
 Monumental News.

BURNS & CORMACK

MANUFACTURERS OF

MONUMENTAL and CEMETERY WORK.

STATUARY, CARVING AND DRAPERY.

ESTIMATES PROMPTLY GIVEN.

WORKS: PAYNE STREET. SOUTH QUINCY, MASS.

Try us on Any Work

You have, that requires fine ornamentation, carving or lettering. We do such work with the pneumatic tool, and produce results that are not equaled by the ordinary hand method, and at less expense to the customer. Send for price lists of rough stock, dies and bases, squared and polished, &c.

We own and work one of the oldest and best quarries in Quincy, and a complete cutting and polishing plant. **TRY US.**

E. F. CARR & CO.,

Successors to Frederick & Field

QUINCY, MASS.

ALWAYS MENTION THE MONUMENTAL NEWS WHEN WRITING TO OUR ADVERTISERS

WELLS, LAMSON & CO.,
 MANUFACTURERS OF
Monuments, Statuary, Vaults, Mausoleums
 DARK, MEDIUM AND LIGHT.
 Barre Granite Quarries: . . .
Barre, - Vt.
 ROUGH GRANITE A SPECIALTY. STOCK SQUARED AND POLISHED TO ORDER.

From our regular correspondent.

BARRE, VT.

The spring here has been vastly more backward than the average Vermont spring and the scarcity of stock has not changed in any way since my last. The sheds are all well filled, however, but the work is nearly all "small stuff." It can hardly be a month longer, however, before the quarries are in shape so that they can be worked to advantage. Many now have water in them, which impedes the work and there is still a considerable quantity of snow on the hill and many days of the present kind of weather will be required to remove it and the frost from the hill whence Barre draws her wealth and so many men their employment.

E. L. Smith returned early in the month from a nine weeks' trip south and west, during which time he visited St. Louis, Chicago and other large cities; Mr. Smith was, however, taken with the city of Buffalo, N. Y., as viewed from a business standpoint, and he has decided to open a branch office there; preparations with that in view are now going on.

An important sale that will interest the readers of the MONUMENTAL NEWS was the purchase by George C. Mackie, foreman for Jones Bros., of the large Sortwell & Morse plant at the north end of the village for \$18,700. This includes all contracts, stock on hand, a water power and several acres of land. The shed is one of the most conveniently located for shipping purposes in town and contains the only power cutter, so it is stated, to be found in the state. Mr. Mackie takes possession May 1 and the new firm will include his two oldest sons, James and William. Speculation as to who will take Mr. Mackie's place with Jones Bros. is rife among the 75 men under his direct control, but no choice has as yet been announced by the firm.

W. H. Harrison, of the American Granite Co., from Adrian, Mich., has been here this week and has spent most of his time in consultation with his agent here, Capt. F. B. Mudgett, and in looking over the desirable real estate in the section with a view to building new sheds. Mr. Harrison brought with him the plans for a \$15,000 mausoleum to be cut here from medium stock for the family of J. W. Moon, Greenburg, Pa., the well-known millionaire coke maker who died in February. The mausoleum is to be a classic structure, covering 300 square feet and standing 17 feet in height. The interior is to be of imported marble with tessellated floor. The job is to be finished in the fall.

Mr. Leslie Henderson, of Henderson & Dickie, was found hard at work among his men, and in response to my query about the state of trade, said, "We have no large jobs on at present. In fact we are short of stock and all of the work on hand is small. The last two or three days have been good for quarrymen and we may expect that stock will grow plentier soon. The outlook for the season of 1893 is good." The shed was full of men all busy, and though the yard was not crowded with stock there was plenty of small stones to keep the men busy until the frost should give up its possession of the unyielding stone at present held in temporary bondage.

A visit to the sheds of Wm. Barclay found the office in possession of a stenographer and typewriter and a son of Mr. Barclay, a quiet youth, who was busy drafting and attending to the large correspondence of the firm. They have a shed full of busy men bringing into shape large masses of granite and engaged for the most part on large jobs, the most important being a soldiers' mon-

ument for a town in Michigan. The total height of the monument is 67 feet 4 inches and the bottom base is 15-6x11-8, the second base 11-6x7-8, the third, 10-6x6-8; the die, 9-6x5-8, surmounted by two caps 9-6x6-8 and another stone 4-5x6. The plinth is 5-6x5-6 and on the front of it is a shield with the state coat-of-arms carved thereon, above and below which is intricate carved work with flutings above about 2-6 in height. The entire shaft is in four pieces and a carved capital which will be surmounted by a granite figure of a standard bearer 11 feet 6 inches in height. At the sides of base of the shaft are to stand a soldier and a sailor carved from granite, on the side of the plinth are four granite cannonballs one foot in diameter and cannon standing on end form the corners of the massive die. On the front of the lower die is the inscription, "To perpetuate the memory of the soldiers, living and dead, from St. Clair county, who served in the war of the Rebellion," on the opposite side is a large laurel wreath. The entire job is to be cut from medium stock and is to be finished this fall. A plan of a family monument was also seen here, a feature of which is a large urn 2-6x2-6 at the base and 7 feet in height with a climbing rose vine bearing buds and blossoms winding about it and a band of laurel leaves about the top, with oak leaves at the bottom. The die is 2-10 high and 3 feet square, the base 4-2 square with 1-4 rise. The monument is peculiar in shape and bears more than the ordinary amount of carved work. Mr. Barclay is also doing a large amount of column work for the trade and is working overtime at the quarry to supply the demand.

Generally speaking business is good, but the shortage of stock is causing considerable delay.

Barre's contribution to the World's Columbian Exposition, consisting of twelve handsomely designed and executed monuments, occupying five cars, were shipped during the month. While it is to be regretted that a much larger exhibit could not have been made, which was rendered impossible owing to a lack of space, yet the display is one that fully demonstrates the possibilities of Barre granite for fine carved monumental work and makes up in quality what it may lack in quantity. A handsomely gotten up souvenir book of Barre has been published for distribution at the fair. It is illustrated with views showing various phases of the granite industry, which is interestingly treated in the text.

Every now and then stories are told of singular markings on stones or window panes that attract considerable attention. When the stone happens to be in some marble dealer's establishment it is as big an advertisement for him as the sea serpent is for the summer hotel proprietor, and we wonder that such discoveries are not more frequent. The latest phenomena of this kind is reported from Stony Brook, Long Island. On the headstone at the grave of a man who has been buried over a year, the outlines of a human face have been discovered and seem to be growing more distinct. Old inhabitants say that the markings bear a resemblance to the features of an ancestor of the family.

Comparatively few of the great monuments of the world have mounds or sloping embankments of earth around the base and the idea prevails quite generally that surrounding surfaces should be flat, especially for large monuments erected in cities. Where this principle is departed from the result is usually disastrous to the effect of the monument.

E. C. FRENCH,
 Manufacturer of and Dealer in
MONUMENTAL * WORK
 OF ALL KINDS
 From the best
 Light and Dark Barre Granite.
 LOCK BOX 50. BARRE, VT.

J. W. McDONALD. WM. MCGEE. J. W. KIDDER.
J. W. McDONALD & CO.,
 QUARRIERS AND MANUFACTURERS OF
FINE MONUMENTAL WORK,
 LIGHT AND DARK BARRE GRANITE.
 Best of Stock and Workmanship Guaranteed.
 P. O. Lock Box 97. * * * * BARRE, VERMONT.

Artificial Marble.

In nature, marble is made out of chalk by water, which percolates through the chalky deposits, dissolves the chalk particle by particle, and crystallizes it, mountain pressure solidifying it. It has been found that similar results may be accomplished by chemical means. First, slices of chalk are dipped into a color bath, staining them with tints that will imitate any kind of marble known. For this purpose the same mineral stains are used as are employed in nature. For example, to produce counterfeit "verde antique," oxide of copper is utilized. In like manner, green pink, black, and other colorings are obtained. Next, the chalk slices go into another bath, by which they are hardened and crystallized, coming out, to all intents and purposes, real marble. —London Science Siftings.

FULLER, FOLEY & CO.,
ARTISTIC MEMORIALS.
 Granite Work of Every Description,
 WEST QUINCY, MASS.

GLARIEHEW & GRAY
 Manufacturers of
Light and Dark Barre Granite Monuments
 STATUARY AND CEMETERY WORK.
 BARRE, VERMONT.

Young's Blue New Westerly or Souhegan Granite.
 Superior to all others Quarried at Milford, N. H.
 Showing a greater contrast between the dark polished, and very white hammered parts, than any granite in the country. It commands from 1/4 to 1/2 more than for Barre or Quincy Granites. Rough Stock sold to the trade. Samples showing partly polished, hammered and rough, 2 to 3 inches square and oblong, 75cts each. When your patrons see it, No Other Will Answer. Send your tracings and get estimates.
YOUNG & SON, - - - - - Milford, N. H.

The grave of the famous navigator, Behring, on Behring Island, has been marked by a monument erected by officers of the Russian navy. It is a granite mausoleum surmounted by an iron cross. A more honorable monument to the intrepid explorer is the name of the great sea which bears his name and whose waves beat upon the memorial which his countrymen lately raised.

The American branch of the Red Cross Society has been presented with 800 acres of land in Indiana, which will be neutral ground and protected as such by international treaty. Forty nations are pledged to hold all property of the Red Cross as neutral in war. Clara Barton, president of the association, says that she will direct that monuments be erected defining the boundaries of this domain, dedicated to eternal peace and humanity, upon which shall be inscribed the insignia of the treaty of Geneva.

The work of erecting the bronze memorial group on the site of the Fort Dearborn massacre in this city was begun in April and it was expected to have the monument ready for unveiling May 1. The base and pedestal of the monument are of Quincy granite, consisting of three stones, each of which had to be brought here separately on a special car built for the purpose. The lower one weighs thirty-five tons and measures 14x9x3 feet. The second and third stones weigh twenty-five and fifteen tons respectively. The bronze group is the work of Carl Rohl-Smith. It represents the rescue of Mrs. Helm from death, by Black Partridge, and the death of the post surgeon. There are other Indians and a child in the group—six figures in all—and it is a realistic and thrilling representation of that historic episode of early Chicago.

A proposition is now pending in the legislature at Springfield to appropriate \$25,000 for the purpose of erecting in Garfield Park a suitable monument "to the memory of the discoverer, Jacques Marquette."



EMSLIE & KELMAN,
 Dealers in
Barre Granite Monuments,
 Tablets, Headstones, Coping
 Etc., Etc.
 Draping and Carving a Specialty.
BARRE, VT.



BAILEY'S
 STEEL OR IRON
PORTABLE HOIST.
 RECOMMENDED BY THE TRADE
 AS HAVING NO EQUAL FOR
 SETTING MONUMENTS,
JAMES DUNN,
 MANUFACTURER,
 207 Dunham Ave. **CLEVELAND, O**

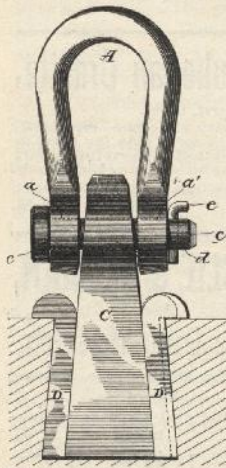
Roxbury, N. Y., for many years the home of the late Jay Gould, is to have a memorial church to his memory. It will be erected by the children of the deceased and presented to the Presbyterians, whose church building was destroyed by fire some time ago.

A bronze tablet has been placed on a building in Boston that occupies the site of Samuel Adams' home on winter street. It bears the following inscription:

On this site once stood the
HOME OF SAMUEL ADAMS,
Who bought it in May, 1784,
And died in it Oct. 2, 1803.
In grateful memory of the
FATHER OF THE REVOLUTION
This tablet is placed by the Massachusetts
Society of Sons of the Revolution.
1893.

The Mormon Temple, recently completed at Salt Lake City, has been forty years building, and cost something over five million dollars. At the time it was begun the stone used in its construction had to be carted twenty miles, from the granite quarries of Little Cottonwood Canon, by means of ox teams. The entire building is of granite and the walls are from six to nine feet in thickness.

Mr. E. T. Vielt, of Charleston, S. C., is the inventor of an improvement in Lewis-irons or stone lifters, and of an improved brush hammer, on both of which he has been granted letters patent. In the accompanying illustration of the lewis it will be observed that the wedge C is an independent element and any strain on it will not move the keys D, thus overcoming one of the serious objections to lewis commonly in use, where the hole in the stone has not been properly made. The novel features of the invention are readily seen in the illustration.



HONE! 'Myers Soft Hone' is better than any other for polishing BLUE as well as all other kinds of marbles. Saves time and labor, dispenses with the use of pumice stone. Price, 10 cts. per lb. If it cannot be obtained from nearest wholesale marble dealer, order from T. C. MYERS, 382 Prospect street, Cleveland, Ohio.

Crushed Steel
Steel Emery.



PITTSBURGH CRUSHED STEEL CO., (Limited)
OFFICE 717 GRANT ST. WORKS A. V. R. 18 WARD.
PITTSBURGH, PA.

N.E. Agents, WOODROUGH, MANSFIELD & CO., BOSTON, MASS. Send for New Price-List, Specimen Sample, Catalogue, Etc.

ROCKVILLE GRANITE COMPANY,
Manufacturers of
POLISHED COLUMNS, PILASTERS, ETC.,
Rockville, Stearns Co., Minn., Feb. 6th, 1892.

Pittsburgh Crushed Steel Co., Limited, Pittsburgh, Pa.:

Gentlemen,—Ship us as soon as possible 450 lbs. No. 30 Crushed Steel that should take the place of No. 30-40 Chilled Iron. Your Crushed Steel and Emery has given us every satisfaction, so you can send us the other 320 lbs. of No. 90 Steel Emery.
Yours respectfully,
ROCKVILLE GRANITE CO.
By A. M. Simmons.



TOOLS!
W. H. ANDERSON & SON,
MANUFACTURERS OF AND DEALERS IN
Stone, Marble and Granite Workers' Tools,
Jacks, Derricks and Tooth Chisels, Machinery, &c.



HOISTING ENGINES of any power and style
Cylinder, with improved patent friction drums
especially adapted for all classes of work. Single
and Double Drum, friction and direct geared, link
motion **Mining Engines**. Four, six and eight
spool lock clutch, self-propelling **Bridge Erecting**
Engines. Double Cylinder, double friction
drum **Dock Building and Pile Driving**
Engines. Quick motion, friction
geared **Coal Hoisting Engines**. Power-
ful compound gear **Reverse link**
motion and friction geared **Quarry and**
Haulage Engines. **With or Without**
Rollers. Any amount of reference given.
Established 1870.
J. S. MUNDY, 20 to 34 Prospect Street, Newark, N. J.

"THE BEST."



GRANITE CUTTERS' AND QUARRY TOOLS.
Stone Cutters' Quarrymen's and Contractors' Supplies of
All Kinds kept in stock or furnished to order.
Material and workmanship guaranteed. Write for prices.
NUTTING & HAYDEN, Ferry St., Concord, N. H.

B. C. & R. A. TILGHMAN, 1118 TO 1126 SOUTH 11TH STREET,
PHILADELPHIA, PA.
Patent Chilled Iron Globules, or Shot.

For Fast Sawing or Rubbing of Stone, Granite and Marble. OUR SHOT have been in regular, constant and increasing use for over twelve years, and they are now in use by all the leading firms in the United States. With the same machinery and power, they will do over three times the work of sand. We are the inventors and original manufacturers of the material, and our Shot have at least double the durability of imitations now on the market. We solicit a competent trial. Speed, durability, economy and having of saw blades. Reduction of power. Over 600 Customers. Over twelve years constant use.

JOHN SWENSON,

SOLE PRODUCER OF THE CELEBRATED

DARK BLUE CONCORD GRANITE,

For Statues and Fine Work it has no Superior.

Also Manufacturer of Fine Hammered and Rock-Faced Monuments, Mausoleums, Tombs, Coping, Etc.

Correspondence Solicited.

WEST CONCORD, N. H.

In concluding an article descriptive of the Los Gatos cemetery, Los Gatos, Cal., a San Jose paper says no one can have any serious objection to registering at this mortuary hostelry when the call is made to go with the silent majority.

An obelisk of red granite, seventy-one feet in height, with a pedestal of black porphyry, is shortly to be brought to Austria from Alexandria, where it has been lying in the garden of the Austrian consulate since 1847.

CHARLES VEIT,

—Producer of—

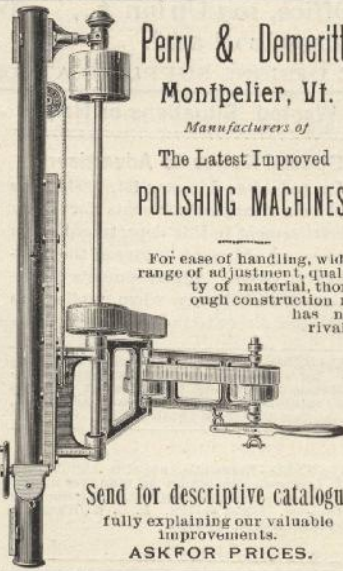
Scotch-American Hone

SOFT, MEDIUM AND HARD.

Excellent for all kinds of Marble, according to grade of hardness.

PRICE 10 CENTS A POUND,

Shillito and Bellevue Avenues, Mount Auburn,
CINCINNATI, O.



Perry & Demeritt,
Montpelier, Vt.
Manufacturers of
The Latest Improved
POLISHING MACHINES.

For ease of handling, wide range of adjustment, quality of material, thorough construction it has no rival.

Send for descriptive catalogue fully explaining our valuable improvements.
ASK FOR PRICES.

Concord Polishing Machine

IN SUCCESSFUL OPERATION AT MANY OF THE BEST POLISHING MILLS IN NEW ENGLAND.

MANUFACTURED ONLY BY

SEND FOR Descriptive Circulars.

CONCORD AXLE CO.
PENACOOK, N. H.



Advertise your business in
The Monumental News



AS A MANUFACTURER OF FIRST CLASS

Granite Monuments!

IN ALL GRADES OF

Quincy and Foreign Granites,

It will be of interest to DEALERS to communicate with
WILLIAM TURNER, Bigelow and Nightingale Ave., QUINCY, MASS.

SOON PAYS FOR ITSELF.

PORTABLE BOX BANDER.



Patent, d March 14, 1893.

One man can band boxes quicker than two men in any other way. The boxes are made absolutely secure. Lighter material can be used, thus saving freight. It is made of malleable iron and steel, is strong and durable. Weighs 8 pounds. Write for Price.

J. W. GODELL,
BURLINGTON, VT.

GRANITE CITY Polishing Machine.

W. A. LANE, Mfr.
BARRE, VT.

This machine is made of iron through out, and substantially built. It has an arrangement for raising and lowering arms by power, and is warranted to save half an hour a day. Agent for Column Cutting Machines, Polishing Lathes, Gear Lifting Jacks, etc. 140 Column Cutting work for the trade.



Pat. Jan. 28, 1890

PATENT OR NO FEE

A 48-page book free. Address,
W. T. FITZ GERALD, Atty-at-Law,
Cor. 8th and F Sts., Washington, D. C.

EXCLUSIVELY
WHOLESALE.

CHAS. H. MORE & Co.,


OUR OWN **
BARRE, ***
SWEDISH and
LABRADOR
STOCK. ****

Quarriers, Cutters and Polishers

OF THE CELEBRATED BARRE AND OTHER NEW ENGLAND GRANITES.

Also importers of Swedish and Scotch Granites and Italian Marble Statuary.

MAIN OFFICE, Foreign Office, 107 Union t., Western Office, 53 Dear-
BARRE, VT. Aberdeen, Scotland. born t., Chicago, Illinois.

SPECIAL HAND MADE DESIGNS SUPPLIED AT REASONABLE RATES.

Business Chances, For Sale, Etc.

Advertisements inserted in this column 10 cents a line each insertion; six words to a line. Copy should be received not later than the 25th.

WANTED—A good general workman at once, one who can letter granite preferred. Address, T. M. TINNEY, Kirwin, Kansas.

FOR SALE—Marble and granite works at Viroqua, Wis., situated in one of the best farming counties in the state; the only shop in the county; only small capital required; cause for sale, poor health. For particulars address A. L. Shepard, Viroqua, Vernon Co., Wis.

WANTED—To go into partnership with a practical workman; one who can take charge of shop. I am considered a first-class salesman, have had 12 years experience steady on the road; am 32 years of age, now getting \$1800 and expenses, but wish to go into business for myself. Will furnish the best of reference and will expect the same. Address E. 28, care of the MONUMENTAL NEWS.

FOR SALE—Marble business and residence in county seat in Northwestern Iowa, good locality as there is in the Northwest. Reason for selling, poor health. For further particulars address M. J. North, Sibley, Iowa.

FOR SALE—Marble, granite and brownstone yard in front of two large cemeteries in Philadelphia. No opposition. Address W. E. C., 932 North 8th street, Philadelphia, Pa.

A WELL-DEVELOPED granite quarry with first-class plant and equipment, well organized system of labor and established trade desires to add to its capital with a view to meeting the demand of an increasing business. To practical men an opportunity is offered for a profitable investment. Address X care MONUMENTAL NEWS.

PARTNER WANTED—In a well established marble and granite shop. Located in a thriving county seat town of 12,000 population; with small capital to put in the business; one who has the ability to canvass preferred. Address, Excelsior Monumental Works, Hagerstown, Md.

PARTNER WANTED—In a well established marble and granite shop, located in a thriving county seat town of 5,000 population, with small capital to put into business. One who has had experience and ability to canvass preferred. A good opening to the right man. Address "Hustler," care MONUMENTAL NEWS, Chicago, Ill.

WANTED—Partner in good town of 2000 inhabitants with \$500.00 to \$800.00 to put in marble and granite business, must have experience either as a salesman or mechanic, and strictly sober and industrious. Address G. care MONUMENTAL NEWS.

WANTED—To buy cheap monuments, granite or marble. M. V. Mitchell & Son, Jobbers, Columbus, O.

Wanted—Situations or Help.

Special Notice to Advertisers.

On and after January 1st, 1893, there will be a charge of 25 cents for every advertisement in this department when replies are addressed in care of the MONUMENTAL NEWS. Advertisements will be inserted FREE only when replies are addressed direct to the advertiser.

WANTED—Position as traveling salesman for wholesale trade, as foreman for retail shop or will buy half interest in some well established retail business. Address L. K. A., Box 317, Green Castle, Ind.

WANTED—Energetic, capable and honest business gentleman as manager of my Boston office. Bond required. Address with reference. State salary. E. C. Willison, 110 Boylston street, Boston.

WANTED—A reliable marble and granite letterer and cutter; one competent to take charge of shop in my absence. Steady employment to right man. Send references. Address John Naugle, Salem, Ind.

SITUATION WANTED—By general marble cutter and good granite letterer, capable of taking charge of shop; sober and reliable. Address W. J. Kemp, Box 308, Grand Ledge, Mich.

WANTED—Situation as general workman in marble or granite. References given if required. Address F. W. Eldredge, Buchanan, Mich.

WANTED—Good reliable and experienced marble and granite salesmen. Must give reference. Address The New Dunning Marble and Granite Co., room 2, Downing block, Erie, Penn.

WANTED—Capable salesman for good granite monumental work. A good place for a responsible business man, either as employe or partner. Address W., care MONUMENTAL NEWS.

WANTED—Two good reliable and experienced marble and granite salesmen. None but good men need apply. Good salaries and expenses paid. Address Black, Sweets & Co., Hastings, Mich.

WANTED—A steady and sober workman, one capable of taking charge of shop and lettering granite and marble. Work guaranteed for next year from date. Address Sands & Woodridge, Elyria, Ohio.

WANTED—One A No. 1 general workman; must be good granite letterer; also one first class polisher; work the year round. None but strictly temperate men need apply. Address Sheehy & Book, LaSalle, Ill.

PARTNER WANTED—Man with push, either practical or general business experience, and capital not less than \$5,000, can secure partnership in marble and granite business established 40 years; eastern city of 100,000 population; only establishment doing marble finishing. Address Success, care of MONUMENTAL NEWS.

WANTED—Two thoroughly reliable and competent salesmen for retail marble and granite trade. Good positions for first-class men; west of Missouri river; state experience and reference. Western House care MONUMENTAL NEWS, Chicago.

WANTED—General workman. Address M. L. Shepard, Viroqua, Wis.

WANTED—A man with money and brains can secure an interest in one of the best granite quarries in the country; all opened up in good shape, water power, stone sheds, and plenty of business the year round. A chance for a live, active man with not less than \$10,000 can address Push, care MONUMENTAL NEWS.

WANTED—Practical workshop recipes. Every good workman has certain ways of doing his work that he regards as *the best*. They may be simple to you but quite unknown to others, who would be benefited by knowing them. Put some of them on paper and send to the MONUMENTAL NEWS for the good of the trade. Do not hesitate because you do not know how to write for the press; we will arrange your matter properly. We will give one year's subscription to the MONUMENTAL NEWS, regular edition, to the first five persons who may send in information of practical value to marble and granite workers. There should be at least four different items. MONUMENTAL NEWS, 245 State street, Chicago.

SITUATION WANTED—By a marble cutter; can do lettering and tracing. Address Theo Krueger, 300 Powers street, Akron, Ohio.

TRAVELER WANTED—An experienced salesman for wholesale marble and granite trade. Address, giving reference, experience, etc., Frederick F. Bagley & Co., Chicago.

WANTED—Good general workman that can letter marble and granite. Steady work to good man. Wm. Parry, Crown Point, Ind.

WANTED—A good general workman to take charge of shop; steady work to a good sober man. Address Dan Downey, Wapaca, Wis.

WANTED—A good steady general workman; must be able to letter granite. Steady work. Address Turner, Blumenthal & Turner, Columbus, Wis.

WANTED—Traveling salesman having experience in granite business to solicit orders and place with dealers and contractors for all purposes one of the best granites in New England. Give references and state salary expected. Address J. L. Martin, vice President Lyons Granite Co., Brattleboro, Vt.