

# THE MONUMENTAL NEWS

AN ILLUSTRATED MONTHLY MONUMENTAL  
ART JOURNAL.

R. J. HAIGHT, EDITOR AND PUBLISHER.

SUBSCRIPTION:  
REGULAR EDITION in United States and Canada \$1.00 a year; Foreign, \$1.40  
INTERNATIONAL EDITION, \$2.50; Foreign, \$3.00.

Address all Communications and Remittances to  
**THE MONUMENTAL NEWS,**  
884 DEARBORN ST., CHICAGO.

Entered at the Chicago P. O. as Second-Class Matter.

VOL. 7. CHICAGO, JUNE, 1895. No. 6.

## ♦ CONTENTS. ♦

Editorial—The Exhibit of the National Sculpture Society, New York City—The Third Statue to a Woman—The Indiana Soldier's Monument—Confederate Monument at Chicago—Illinois Monuments at Chickamauga.....	361-362
Design Must Yield to Measurements.....	362
*Monuments Dedicated on Decoration Day.....	363
*The Exhibit of the National Sculpture Society.....	364
*American Monuments are Pagan.....	366
*Mosaics.....	368
*Sculpture.....	370
*Prof. Bega's Studio.....	371
Our Illustrations—Proposed Monuments.....	372
Bronze.....	374
*Monumental Notes.....	376
Epitaphs.....	378
Association News.....	379
Recent Legal Decisions.....	380
Trade Notes.....	382
Making Gypsum into Marble—Pictorial Mosaics.....	384
Quincy Letter.....	386
Barre Letter.....	388
Baltimore Letter.....	390
New Firms, Changes, etc.....	398
Trade Among Advertisers.....	400

\*Illustrated

THE Exhibition given by the National Sculpture Society in New York City has been an undoubted success. There were sixty-nine exhibitors, with one hundred and eighty-one subjects. Twenty-one models were offered in competition for a new design for the United States silver dollar, and the American Numismatic and Archaeological Society displayed eight cases of interesting matters. The exhibition has clearly shown that we have American sculptors equal to great work whenever such work is demanded.

PROBABLY no state in the Union furnishes more monuments and monumental material for the entire country than Vermont, and yet, all things considered, no state has erected fewer monuments to its public men. A design has recently

been accepted for a monument to its first governor, for which a state appropriation has been made, and it has called forth some criticism from the press. For the cause of art in the Green Mountain State, the commission should study the criticisms which would seem to be well founded.

THE third public monument erected to a woman in this country is that unveiled last month in Troy, N. Y., to the memory of Emma Willard, founder of the famous old Troy Female Seminary. She was born in Berlin, Conn., 1787, and died 1870. She was a woman of extraordinary force of character, and was one of the foremost educators of her time; in fact she was prophetic in her views with regard to the higher education of women, and had the courage of her convictions, as well as the power of impressing them, to aid her in carrying them into effect. The monument, which was unveiled amid splendid surroundings, is of heroic size, and the work of Alex. Doyle of New York, modeled from an oil portrait for which Mrs. Willard sat at the age of forty-five. She is represented as sitting in a chair in a meditative pose, in her right hand, a partly opened book, her left resting on the arm of the chair. The right foot projects slightly, and rests on a square stool. The dress is of the style of the period. The head is uncovered. The bronze figure rests on a pedestal of Quincy granite, eight feet high and six and one-half feet square. On a bronze tablet on the front face of the pedestal is inscribed: "In honor of Emma Hart Willard, who on this spot established, A. D. 1821, the first permanent seminary in America for the advancement of women. Erected by her pupils and friends, A. D., 1895."

INDIANA is still in the throes of the monument question, which the appointment by its governor of the Board of Regents decreed by the legislature to take the place of the old commission does not alleviate. Evidently for political reasons, Mr. George W. Langsdale has not been appointed on the board. Gen. Lew Wallace, one of the appointees has since resigned, presumably because his strictures upon what has been done, and the radical changes he proposed did not meet with the approbation of other members of the board. When this great monument is completed the Hoosiers will have the finest memorial of its kind in the world, and its

history will present a mosaic of men and material which will require a historic antiquary to describe and explain.

WITH very few exceptions no monument has attracted more general attention than that to the 6000 Confederate prisoners of war who died in Camp Douglas, Chicago, and which was dedicated at Oakwoods Cemetery in that city on Decoration Day with imposing ceremonies. The selection of Decoration Day for dedicating a Confederate monument in a northern city gave rise to a partisan discussion which the circumstances did not justify. The Grand Army men who sincerely participated in the unveiling of this monument did an inestimable service towards strengthening the renewed ties of brotherhood and citizenship, and removing opportunities for the recurrent display of sentiment unworthy of high American principle. Chicago is to be congratulated upon her efforts to emphasize the desire to "Let us have peace."

ILLINOIS has appropriated \$65,400 for the erection of monuments to mark the positions occupied by the State troops in the battles about Chickamauga. In carrying out the provisions of the bill it is said to be the intention of the commission to adopt a uniform design for all the monuments. The reasons given for this are: That the amount appropriated for each monument is small, viz: \$625, which, under the law, cannot be increased by other contributions, and that this uniformity of design will avoid any rivalry in either design or outlay. The principal reason, however, claimed for this decision is that the positions of the Illinois troops will be at once apparent on the field, which of itself is a good one. While this may be true, there is the consideration that the Illinois troops held some of the most important positions in the campaign, which with their prominence in the landscape, entitle them to more important monuments than the design decided upon. More than this, there is the prime fact that Chickamauga is a National park, which demands that diversity of memorials should be an especial feature, and that artistic requirements should not be overlooked.

#### Design Must Yield to Measurements.

A decision of much interest and importance to every one having anything to do with the making to order of monuments has been rendered by the supreme court of Vermont in the case of Cutler v. Dix. This was an action brought to recover payment for a monument. The manufacturers agreed to furnish one according to a specified design, and of certain prescribed dimensions. They furnished one the various parts of which were not cut accord-

to the sizes specified in the contract. Nine of the fifteen measurements varied from those specified. In the monument furnished the plinth was  $4\frac{7}{8}$  inches longer, and the cap  $3\frac{3}{4}$  inches thicker, than the dimensions required by the agreement. This change of sizes they made without the knowledge or consent of the party ordering the monument.

Testimony was introduced on the trial in behalf of the manufacturers as to what the sizes of the monument ought to have been, and the effect that the variations made from the contract sizes had upon the proportions of the monument, from which it might be inferred that the variations from the measurements were made in order to make the monument conform to the specified design. The trial judge submitted to the jury the question whether the variations shown were a departure from the contract. Had it been uncertain what the dimensions of the monument were, the supreme court says that there might have been a question to submit to the jury; but what the dimensions were was conceded, and it was a question for the court to say whether the monument was a compliance with the contract. Had the manufacturers a right to change the dimensions of the monument, and make them other than the prescribed ones? The supreme court thinks not. The fact that the monument was to be of a certain design, it holds, did not justify the manufacturers in constructing it with other dimensions than those specified in the contract. The design must yield to the measurements.

The case is analogous to a conveyance of land which is described by metes and bounds or courses and distances, and it is held that such description prevails over any general description of the subject matter that may have been used in the deed tending to enlarge or diminish the boundaries. While many of the variations were so slight that essentially they were such as the contract called for, the court says that there were others that it must hold were a substantial departure from the contract. Thus the plinth was more than 12 per cent. longer, and the cap more than 28 per cent. thicker than the contract dimensions. It cannot be said that the contract presented a case of latent ambiguity, for the measurements prevail over the design, and thus there was no uncertainty. The dimensions of the monument furnished being conceded, it became a question of law whether the contract was complied with. It did not appear that there was any difficulty in constructing a monument according to the specified measurements, and the party ordering it was entitled to a compliance with the contract. Under this holding he was under no obligation to accept the monument, and to pay the consideration named in the agreement.

**Monuments Dedicated on Decoration Day.**

The most important monument dedicated on Decoration Day this year, in point of public interest, was that to the Confederate prisoners of war, who died in Camp



CONFEDERATE MONUMENT,  
OAKWOODS CEMETERY, CHICAGO.

Douglas, Chicago, and were buried in Oakwoods Cemetery of that city. All over the country attention had been drawn to this on account of the conflicting sentiments expressed, but the decided manner in which Chicago took it up, and made of it an event long to be remembered, and of a possible immense good to the country, settled the question and in a characteristic manner. The South, evidently appreciating this, sent several carloads of flowers, wreaths and palms, to be laid upon the graves of blue and gray alike, a token of the broader humanity coming to pass.

The monument, of which an illustration is given, stands something over thirty-six feet high. It is constructed of Georgia granite, furnished by the Southern Granite Co., of Atlanta, Ga. The bottom base is fifteen feet six inches square. The die six feet square by three feet high. On top of a battlement crowned shaft stands a heroic figure of a Confederate infantryman in a pose suggesting the resignation of a brave man to the inevitable.

Bronze panels on the sides of the die represent "The Lost Cause," "The Call to Arms" and "Eternal Sleep." The fourth bronze panel carries an inscription. Captured cannon are mounted at the corners, with pyramids of ball.

A soldiers' monument at West Boylston, Mass., consists of an infantry soldier in heavy marching order, without knapsack, six and a half feet high, standing at rest. The figure is cut from light Westerly granite. The pedestal is of dark polished Quincy granite, the base being seven feet by five feet, and total height of monument sixteen and a half feet. Appropriate inscriptions are cut upon it. It cost upwards of \$1,600.

The monument to commemorate the railway catastrophe at Ashtabula, O., which occurred December 29, 1876, is an obelisk of Vermont granite, twenty-eight feet high, resting on a die two feet six inches high and a base sixteen inches, making a total height of thirty-two feet. The base is eight feet square and the die three feet ten inches square. Over nine hundred letters are cut on the die, giving points in the disaster and names of dead. It was mainly erected by Unity Lodge 133, Knights of Pythias, of Ashtabula. The monument is cut in partly hammered work and partly rock-face, and was designed and erected by C. G. Blake & Co., of Chicago.

Memorial day was set for the laying of the corner stone of the long talked of soldiers' monument at New Rochelle, N. Y. A contract has been made for a marble shaft monument twenty-five feet high, surmounted by a heroic statue of a soldier on guard. At the base bronze tablets will bear the names of the 300 New Rochelle soldiers who went to the war.

The monument to Gen. Jeremiah M. Rusk, Viroqua Cemetery, Viroqua, Wis., is a shaft monument of Egyptian style, of Vermont granite, thirty-three feet high. The bottom base is six and a half feet square, by fourteen inches thick. A heavy molded base rests on this, on which is the family name "Rusk," in raised and polished letters. The die carries polished tablets on its four sides, giving an epitome of the General's career. On the side of the shaft above the die is a bronze shield, cross-swords and pen with Latin motto.

The soldier's monument at Malden, Mass., presents a departure from the stereotyped style. A bronze statue of a woman posed as a symbol of the valor shown by women during the struggle for freedom, surmounts a granite pedestal. In all the memorial is some seventeen feet high. It is the work of Mr. Geo. T. Brewster.

The Confederate monument at Raleigh, N. C., has attracted some attention. Its total height is seventy-two feet. The stone work is North Carolina granite, and the bronze statuary has been made in Munich, the Muldoon Monument Co. of Louisville, Ky., being the contractors. Two bronze statues representing different branches of the service, stand on an elaborate base and support a column twenty-eight feet high, of one piece of granite. On top of the column is the bronze figure of a Confederate private soldier.

The monument dedicated to the soldier dead at Topeka, Kas., was the gift of Mr. G. G. Gage of that city, and was executed at Barre, Vt., by the order of Guild & Walwork the local contractors. The monument cost \$5,000.

#### The Exhibit of the National Sculpture Society.

The exhibit of the National Sculpture Society which opened on the 7th of May, was arranged like an Italian garden, and visitors all found themselves wondering why floral decoration has not always formed an essential adjunct to exhibitions of sculpture.



THE WHIRLWIND.  
J. S. HARTLEY, SC.

In Paris, something similar but less ambitious is done. The center of the gallery there is made into a little grove with palms and plants and the sculpture is placed around it.

But here the entire walls were hidden by evergreens that reached fairly to the ceiling and against these the most important statues were placed.

A wide avenue ran through the center of the main gallery, bordered by palms and spanned at the farther end by an arch in plaster. This arch was formed by the bas relief, which, in marble, is already placed in the Judson Memorial Church, New York.

It was placed against a broad frieze, mounted on tall Ionic columns. The Washington Memorial Arch, a miniature model

of which was exhibited by Charles Dunn, shows how important bas relief may be to decorative as well as purely architectural sculpture.

Two deep fountains played among the palms midway of the avenue, and on one of these Mac Monnies delightful little Bacchante was fitly placed. Through the arch could be seen part of the colossal bronze by Niehaus, called "The Scraper." This statue has the grand simplicity of an antique. It represents the Greek athlete using the strigil after the bath. The whole pose is relaxed and expressive of perfect unconscious ease. The modeling has that rare quality, more easily recognized than explained, which makes a work of art a creation instead of an execution.

On either side of this are two caryatides, competitive figures for the American Surety Co's building on Broadway. There are to be six figures standing upon the top of a colonnade thirty feet above the street, and it will be interesting to see whether

J. Massey Rhind's distinctly architectural treatment, or Philip Martiny's more poetical ideal rendering will be chosen. Behind all these towered the evergreens. Their stern background was particularly appropriate to J. Q. A. Ward's "Pilgrim," a bronze statue which we are never tired of seeing in Central Park. This was the plaster model, and the model often possesses an undefinable charm that is not retained in the finished bronze or marble. There is splendid strength in all Mr. Ward's work, and it is hoped that in the next important sculptural exhibition he will be represented by some of the heroic equestrian statues which could not be obtained for this.

Of equal importance was the ten foot statue of "Mercury Teasing the Eagle of Jupiter," by F. Wellington Ruckstuhl. The eagle's wings are used in splendidly decorative effect as the bird struggles to beat off the tantalizing god. This, more than any other group, shows the purely ideal theme which our sculptors have been given so little opportunity to produce. An order for a monument is generally to be filled by a portrait rather than by the representation of a thought or a deed. In France, when the government wishes to commemorate a great man it frequently dedicates to him a statue of fame instead of a statue of himself. This does away with the awkwardness of conventional and contemporary garments which all artists hate.

A masterly treatment of conventional costume is found in Daniel C. French's group, "Gaulaudet Teaching a Deaf Mute." The long coat of sixty years ago falls in a few simple folds about the seated figure of the master and harmonizes with the folds in the dress of the child that stands beside him, seeking with outstretched hand to repeat the motion of his hand. The tenderness and dignity of the man's face draw one irresistibly and nothing more touching than the child's expression has been conceived. All the eloquence of speech is in her outstretched hand and in her eyes that follow every movement of her teacher's lips.

Very different from this, and yet the most classically beautiful statue in the exposition is the "Diana," by Olin L. Warner.

It is a perfectly nude figure



COMPETITIVE FIGURE  
for American Surety  
Co's Building, by  
J. MASSEY RHIND.



COMPETITIVE FIGURE  
for American Surety  
Co's Building by  
PHILIP MARTINY.

seated in a half listening, half resting attitude. She is slightly supported by her left arm and hand, while with her right she holds the short arrow of mythology. There is nothing listless in the exquisite relaxation of every limb; it expresses perfect physical and spiritual repose. Had there been any prizes awarded for statuary in the exhibition, almost every artist agrees that it would have been awarded for this Diana.

"The Whirlwind," by J. Scott Hartley is an ideal figure of a woman wound in a whirling bewildering drapery which rises twisting from the pedestal, binding her feet, half draping her form, and locking her futile arms above her head. It is so finely, so delicately conceived and executed that it gives a curious effect of being smaller than it is.

There were many commendable busts and statuettes in the exhibition, many of them from Chicago sculptors. Miss Bessie Potter sent the portrait busts of Prof. Swing and Miss Gerow and a number of statuettes that are as typical of the American girl as Gibson's drawings are held to be. Her method is entirely her own and her work has a sentient quality about it that defies analysis. This is particularly true of "The Rose" and the "Sketch of a Girl."

Lorado Taft, also of Chicago, sent the "Wildflower," a portrait bust of Hamlin Garland, and "An Old Settler."

From Emil Wuertz, another Chicago sculptor of great ability there were several interesting reliefs in bronze and plaster.

The "Vow of Vengeance," a little group in bronze by H. A. Mc Neil received much praise. It represents a little Indian boy shooting an arrow. Behind him an old warrior is crouched, watching the missile's flight. It is a particularly decorative thing. Of the same general character was the "Primitive Indian's Music," and the bronze relief of "Black Pipe, The Sioux Brave." Mr. Mc Neil's portrait bust of Charles Francis Browne was the more interesting of the two which he sent.

From Mac Monnies there were six statuettes loaned by Mr. Theodore B. Star. They were the

"Boy and Heron," "Bacchante and Child," "Diana," "Nathan Hale," "Fame" and "Pan of Rohallion." His work on the World's Fair Fountain is too well remembered to need description here.

Above the door on entering the main gallery one was instantly impressed by the immense bas relief by Karl Bitter, a decorative panel for the waiting room of the Broad Street Station, Pennsylvania Railroad, Philadelphia. It is a splendidly difficult subject embracing the highest and lowest and middle relief, and represents "Transportation." It is a spirited procession of women, a chariot and plunging chariot horses, and it is in the strangest contrast to the low relief and severe simplicity of the Judson Memorial at the other end of the avenue of palms.

In the numismatic branch of the exhibition there hung a little frame of plaster models contributed by Mr. St. Gaudens, and beside them the exhibit of the United States Mint. It gave the curious history of the reverse of the World's Fair Medal which was rejected by the United States Senate. The reverse which Mr. St. Gaudens offered to replace the first is also exhibited. Near this was the reverse made by Mr. Barber which was accepted.

Two prizes were offered by the society for the best design for a new silver dollar. There were more than twenty entries, and the prizes were awarded to Mr. Albert Jaeger for the reverse, to



"DIANA." OLIN. L. WARNER, SC.

Mr. A. R. Ross and Mr. John Ruhl for the obverse which they submitted together. This exhibit was supplemented by a rare collection of coins and medals loaned by the American Numismatic and Aeological Society.

The judgment of the placing committee was commended by every one who felt the harmony of the rooms, and too much can not be said in praise and gratitude to the sculptors who, with infinitely hard labor, brought together for the first time a collection of representative American work. We have too long been content with knowing almost nothing of what our sculptors could do and how their works compared. That Mr. Ward, Mr. Warner, Mr. Bissell, who sent his bronze sitting statue of Abraham de Peyster, and Mr. Adams could do great things we knew, but to have these things brought together in a forestry of green, to hear the music of the fountain, to rest on the low marble settees and realize that all this splendid work is ours to claim and to encourage,—this was what filled every lover of art with a gratitude which the exhibitions of painting have not inspired for years. Large works of sculpture are produced so slowly that the public is in no danger of growing too accustomed to this pleasure. Such an exhibition cannot be repeated again for four or five years, and in the meanwhile we will be forced to content ourselves with small exhibitions of sculpture in connection with some other society.

Perhaps the best comparisons that can be made to this exhibit in the United States are the beautiful old New Orleans cemeteries where the massive old vaults above ground are like walls in Italian gardens, covered with vines, shadowed with crowding foliage and surrounded with statues. And this leads us anew to wondering why we have combined landscape gardening and monumental art so long without realizing the fitness and even the necessity of keeping nature and sculpture together within doors and without. *Marguerite Tracy.*

#### American Cemeteries are Pagan.

IMPRESSIONS OF A FOREIGN VISITOR.

The impression was deeply marked upon my mind when two years ago I first had the opportunity of looking through several American cemeteries and was intensified the other day when I spent an afternoon in Greenwood. I have seen American cemeteries in New England, around Chicago, in many inland places, as well as those which are dotted around Brooklyn on Long Island, and I speak of Greenwood as being, not so much a fair specimen of them all, as rather a model, typical of that which the other cemeteries aspire to be.

Let me say first, that in all respects except the one of which I shall speak in hostile criticism, Ameri-

can cemeteries compare most favorably with those of the old world. It appears that in their inception much more ground was available for them than we have to spare for such purposes on the Eastern side of the Atlantic, and great advantage has been taken of this extensive area and of all natural inequalities of surface which break the monotony of a landscape; whilst more has been done probably in the way of artificially produced hills and valleys with lakelets along them to improve the general appearance of the place. Of foliage there is abundance; which we all understand to be a most important consideration in a cemetery, both for the shade which it affords to those who visit the place and for the hygienic chemical action which all trees exert so largely, particularly in a burial ground. I have much admiration for the slopes and banks, green as in the Emerald Isle, for the substantial granite which forms the facades of the vaults, and for the great variety of cenotaph and sarcophagus, pyramid and mausoleum, some of which are ornate even to worthiness of their title, and for many blocks which were wrought into their shape with reason and now boldly bearing honored names.

The arrangement and the nomenclature of the roads and paths in these cemeteries are admirable. How can I quote from them? "Landscape Avenue," "Forest" and "Woodlawn," in endless variety and across these avenues are the paths named

after every blossom that blooms upon English hedgerows and flowerets that sparkle on prairie breadth or mountain side in spring, whose very names suggest odors of sweetness and thoughts of peace which are very well inspired in these surroundings. The cypress and mistletoe, willow and palm, and other indications more sombre are found here also, but amid all these, which constitute the admirable natu-



CROSS IN MEMORY OF STEPHEN CLARE.

ral environment, there stand those stones which to my mind are evidences of the lack of Christian thought and Christian sentiment which surely should be found around the abodes of the dead.



THE MAUDE CROSS.

I have no difficulty in proving this. I stood upon a hilltop which is adorned by the Morse tomb, in itself a thing of beauty, though of composite architectural character. Around and within view from that hill-top were probably more than a thousand various memorial stones, and among them all I counted but four crosses which surmounted other erections, one cross sawn out in a headstone, and only one Latin cross pure and simple.

There is no lack of work or wealth spent upon these tombs. The material is excellent. They are enriched with moldings and panels, bordered with banners and worked in mosaic with shells, but of all the best of them I do not hesitate to say that their character is pagan. I think there are more obelisks than any other order of tomb, and who that knows the origin of the obelisk as a memorial can look at it without a blush of shame. My conviction is that those who use the obelisk never have thought of what they were doing, or they would certainly not have done, as can be seen to be repeatedly done, embellished the apex of the obelisk. There are obelisks here whose point finishes in a heavy molding, or is surmounted with a cap, or has an angel standing on it. One such unfortunate creature spreading his wings as if attempting flight, but with wings so small they would not have lifted his arms if they could fly. Where the obelisk has not suffered attempt at adornment at its apex, it is stood on a base out of all character with itself. On any base one can justify space enough to place an inscription, but most of these consist of more bases than one, all over done with conventional molding. Returning to the point of the obelisk, some are finished in tasseled drapery, others are carved, surmounted by emblematic figures, have urns with flame showing, and one, perhaps most offensive thing of all, was paneled and carved all over.

I observe also that the ledger shaped tomb appears to have no admirers among your monumental masons, for I suppose that they are the sinners

above all who deal in America in the matter of monumental taste. There are also but few broken columns, which I venture to commend, as to my mind to erect a broken column despeaks irreverence. What should be done then? Surely the answer is simple. The cross is the emblem of Christian faith. The more simple it is in its character, the less it detracts from its original significance. In the course of ages the cross has been used by various nations of people and in various forms, all of which forms lend themselves now with propriety to memorial uses.

The cross to John Augustus Smith is an Iona cross, that early settlement on Scotland's western coast where the monks of the sixth century founded a settlement and erected their cross, which still stands, though this pattern is very much more worn than might be imagined from this modern representation of it.

The cross to Alfred Crawshay is of another order, known to us as a rustic cross, but all the details of this were suggested by his widow for his memorial and it is certainly a unique design; more than that, it is a unique erection. No two were ever made of them. The rock hewn base is represented with some cut flowers which are supposed to have been distributed upon it, whilst from the interstices grow ferns. The cross is the imitation of rustic timber supposed to have been stood in its base until it had been grown around and entwined with luxurious passion flowers. The head and one arm of it carry a crown of thorns carved in exact imitation of the original. The passion flowers have entwined themselves through and among the thorns and spread upon the arms and head of the cross.

This is illustrated in the International Edition of this issue.

Surely these are superior in many ways, and are worthy the attention of those who have much to say in deciding what tomb shall be raised over the disciples of Jesus Christ in America.

Another evidence of lack of Christian sentiment in the cemeteries is the exceeding scarceness of even



CROSS IN MEMORY OF JOHN A. SMITH.

an attempt at Gothic shaping. There stands in Greenwood a row of five in one large plot, so bald in their outline that they might have been meant for barrier posts. On one of the larger headstones the adornment consists of a soup bowl vase. Headstones which with us are generally finished with a lance head, sharper or blunter, in America are but roughly rounded. Where carved adornment is attempted it is generally limited to stiff leaf foliage, the earliest kind of carving which Gothic builders did, and from which they wholly delivered themselves in the thirteenth century.

Concerning inscriptions, you largely adopt raised letters, which are very plain speaking, and which if protected in a panel may be durable, but on many of your tombs there is no surrounding protection and the letters are knocked off. I would suggest the consideration of lead letters, finished flush with the marble surface, said to be more imperishable than the marble and which are shown on all tombs of which I give you illustrations. They are in general use in England on all marble tombs.

London.

*Halford L. Mills.*

#### Mosaics.

Mosaic work has hitherto been comparatively little known in this western hemisphere although an art of great antiquity; and much used in the interior decoration of ancient buildings. At the present time, however, considerable work of the kind is being introduced into our large office and other public buildings, which should make the following abstract of a lecture on Mosaics by Director A. H. Griffith, of the Detroit Museum of Art, of particular interest. The illustration herewith shows a piece of ancient mosaic work:

"Aside from the ties of affection which bind the human family together, there is that love for the beautiful, more or less developed, which delights in personal adornment or the beautifying of the home and temple which every family and people create to their heroes, their gods or their religions. To this love of adornment we owe the splendid homes of Detroit and every other city. To this love of the beautiful and magnificent we are indebted for the palaces of the old world. To the infinite desire of every nation to adore their heroes and gods, the people of today are enabled to look with wonder and surprise upon the temples, cathedrals and churches which are the pride and glory of every country.

"The desire to excel, which is uppermost in almost every human breast, brought the fine arts and the industrial arts to the highest degree of perfection in very early times, so that while this is an age of

invention, of steam and electricity, yet for our highest ideals in art and artistic works we study the antique.

"Inlay work is frequently mistaken for mosaic,

and in a sense it is of a similar character.

The inlaying of furniture with pearl and ivory is often spoken of as mosaic, in fact the earliest specimens which we find preserved in the Louvre and British Museums are of this character, and show pieces of ivory perforated in which are in-



serted bits of colored glass and gems. This, however, is more like cloisonne. There is a vast amount of this work both inside and out on the famous Taj Mahal.

"A mosaic is the fitting together many small pieces of marble, opaque glass or other materials so as to form a pattern which may be more or less elaborate, according to the use for which it is intended.

"The Egyptians seem to have understood the work. The finest specimen in the British Museum which is entirely of glass is a small tablet only about three-eighths of an inch square, possibly used as a setting in a ring, on which is represented the sacred hawk, every feather on the bird's wing being reproduced with a marvelous attention to detail, colors and even tints, each quite distinct but so small that it requires a strong magnifying glass to distinguish the different parts.

"A famous artist in mosaic experimented until he discovered how it was possible to accomplish such a work. He did it in this way. Numbers of long sticks of various colored glass were arranged in such a way that their ends produced the figure of a hawk. Other sticks of blue glass were fastened about so as to form the background. The bundle when looked at endwise presented the picture of a hawk with a blue background, but of course on a large scale. This bundle was then carefully heated until it became one mass, and while in this softened state was drawn out as they draw wire until it



was greatly reduced in thickness, but with every strand and fiber unaltered. A slice of the rod was then cut off and its face polished, showing the original design wondrously beautiful in its delicacy and refinement.

"The more important use of mosaics, however, have been on a large scale for pavements, walls or ceilings. Among the Romans the use of mosaics was very extensive. Pliny tells us that they learned the art from the Greeks, and it is known that the Erechtheum at Athens, which was built in the fifth century B. C., had the bases of some of its marble columns ornamented with bits of colored glass inserted in such a way as to emphasize the main lines of the work.

"Pliny's doves in the Capitol Museum at Rome are known by every art lover, and one of the old writers has described an old mosaic floor as representing a battle between Alexander and the Persians, every figure wrought out with the distinctness of a painting. Another wonderful piece which undoubtedly will come to light again some time, for the work is almost indestructible, is a floor of a perfectly plain color on which was strewn flowers and fruits that according to the old tradition were so perfect in form and color that visitors stooped to pick them up. Another still was the floor of a banquet room on which was represented the crumbs from the table, and these were executed with such marvelous fidelity to nature that those who came to the feast refused to eat, saying, "we are invited to the second table."

"England is particularly rich in this respect, the pavements of York and other places being elaborate in design and as skillfully executed as any that now exist even in Rome. The most magnificent of all the mosaics found are those of Northern Africa, but this is owing entirely to the wealth of colored marbles of all shades and tints which abound in that country."

"The labor and expense attached to this kind of work has prevented it being used to any great extent in our country: though I am glad to say it is making some headway both in public and private buildings. Perhaps the best example near us is the interior of the Garfield Memorial at Cleveland, Ohio."

At the Art Exhibition in Berlin, the American exhibit was placed separately in two large halls, and is reported to have outshone all the rest. The press has been very laudatory, the *Vossische Zeitung* said: "Those times are past when American art was sneered at. Who can deny it? In the arts and crafts there is the same resistless advantage as in the technical science. One feels the vehemence

of the youthful vigor which courses through veins across the ocean and which is ever achieving fresh things."

\* \* \*

It is reported from Berlin that the Germans of New York have purchased Herter's Heine monument.

\* \* \*

A medal has been modeled by Prof. Herter, by order of the Emperor of Germany, to celebrate the coming dedication of the canal. His Majesty will present one of these medals to each guest.

\* \* \*

A bust of Tennyson, the poet, has been made by Mr. F. J. Williamson, by order of the Queen, to be placed in the grand corridor of Windsor Castle.

\* \* \*

The Katherines of the United Kingdom and America have just placed a beautiful slab of Irish gray fossil marble over the grave of Katherine of Arragon, in Peterborough Cathedral, England. The inscription and the arms of the queen are said to be beautifully carved.



MONUMENT IN FOREST HOME CEMETERY, MILWAUKEE, WIS.

## Among Our Sculptors.



Among the important works exhibited this spring at the Paris Salon is the one illustrated herewith. It is a sketch of the monument, commemorative in idea, to be erected at Sedan in memory of the French soldiers who died for their country in the Franco-Prussian war. The sculptor is A. Croisy. From the catalogue of the exhibit of sculpture in this year's Salon, beyond a few good works, there does not seem to have been so artistic a display as in former years.

SPEAKING of the effects of war on

sculpture, a sculptor in the New York *Herald* says: "The civil war set sculpture back fifty years in this country, because it gave a distinctly modern and personal character to the public demand for statuary. Immediately after the close of the war patriotic gratitude caused a demand for memorials of soldiers of renown. These have been set up so promiscuously all over the country that it is difficult to make the average American believe sculpture has to do with the imaginative and ideal. To them the soldier on horseback, the sailor on the quarter deck, or the heaped up mounds of the heroic dead are the only subjects and objects for the play of the sculptor's fancy. The soldier monuments show nothing, or very little, in the way of sculpture. The sculpture that will elevate the people by turning their thoughts to higher things finds very little recognition on American soil. The time has come to change that."

WILLIAM T. BREWSTER, the sculptor of the statue surmounting the Indiana Soldiers' Monument at Indianapolis, takes exception to Gen. Lew Wallace's strictures on that work in which he compared it to a can-can dancer. Mr. Brewster says the figure is decently clothed, the only portion at all exposed being the ankles, from which the wind is supposed to have slightly lifted the folds of the dress. "I took pains to make the lines simple, strong and sweeping, because at such a great height the view is merely a silhouette against the sky. It requires pretty trenchant modeling to show the lines of a figure at that distance." Evidently Gen. Wallace is not familiar with all of these requirements.

FREDERICK MAC MONNIES, who was awarded the contract for certain groups and figures for the Soldiers' and Sailor's Memorial Arch, Prospect Park, Brooklyn, has completed some of the models. The quadriga which surmounts the arch has for its central figure, Freedom, which is striking and graceful. She holds in her outstretched hand a standard which, with its waves constitute a part of the drapery. In her other hand is a flaming sword. The four horses are heroic in size and posture. They are led by winged virtues blowing the trumpet of fame, and the horses are disposed in such a way that the ani-

mals stand out boldly, allowing a full view of the chariot. The side statues represent the great war president, Abraham Lincoln, and his great ally and general, Ulysses S. Grant, on horseback. It is the first time that any artist has ever undertaken to represent the martyred president on horseback, an evidence in itself of the sculptors originality and boldness. Both statues are of heroic size and in design and general arrangement harmonize with the classic simplicity of the columns of the arch. The contract was also awarded this sculptor for the work of providing two colossal groups and attendants at gate No. 4, Prospect park, at the entrance of Ocean boulevard. He will, in addition, furnish four colossal bronze eagles for the columns at the main entrance to the park.

THE Chicago coterie of sculptors at Paris will be increased this month by Lorado Taft, Miss Bessie Potter and others.

IT is now proposed to erect a large arch at the Fifty-ninth St. entrance of Central park, New York City, and to surmount it with St. Gauden's equestrian statue of General Sherman, provision being made for other notable characters of the war.

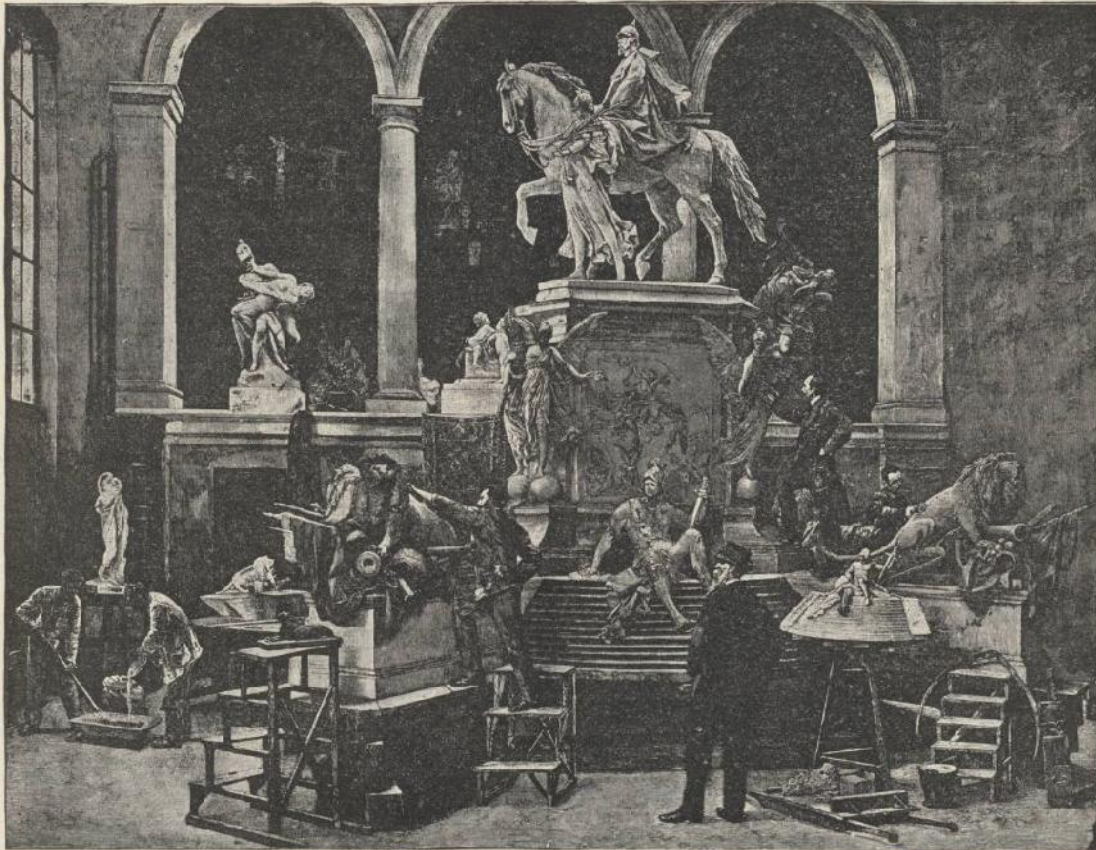
THE Arche Club of Chicago presented the Art Institute with \$100 on condition that it be invested in the work of some woman sculptor, such work to be well placed. The directors of the Institute accepted the gift and purchased six of Bessie Potter's little figures which are placed in the gallery devoted to contemporary sculpture.

LORADO TAFT'S last piece of work before going abroad was a heroic bust of Thomas D. Gilbert, of Grand Rapids, Mich., who died a short time ago. The bust is to stand on a nine foot pedestal in one of the Grand Rapids parks. It is pronounced a splendid likeness.

A NEW figure to take the place of that which has crowned the Battle Monument at West Point, has been modeled by Frederick Mac Monnies, and accepted by the committee. The figure is draped, with outspread wings, lightly poised on both feet upon a sphere, as though just alighted. In one hand she holds to her mouth a trumpet, and in the other elevates a chaplet of laurel. A laurel wreath crowns her brow. The drapery is blown against the front of the form, bringing the modeling in full relief, and extends to the rear on both sides in light fluttering folds, which are skillfully gathered in effective masses.

A CONTRACT has been made with Mr. F. Wellington Ruckstuhl for the erection of the \$10,000 Soldiers' Monument for Jamaica, L. I. A statue of Victory will surmount a pedestal designed by the architects, Messrs Marsh, Israels & Harder of New York. The monument will be a bold innovation on regulation Soldiers' monuments. The statue of Victory will be eight feet high from the bottom of the plinth to the top of the head and about nine feet high to the tips of the wings. Her drapery will be filled with the rushing wind giving motion to the figure. The wings will be extended with a bold and wide spread. In the left hand she will hold a palm branch to symbolize Fame and in the right a crown of laurel to symbolize immortality. The head will be encircled by a crown of laurel and the expression of the face will be one of triumph. The whole monument will stand twenty-four feet above the roadway.

MONUMENTAL NEWS has received a photograph from Mr. J. S. Hartley of his "Whirlwind," and from Mr. Geo. E. Bissell one of his monument of Abraham Lincoln, erected in Edinburgh, Scotland.



INTERIOR OF REINHOLD BEGA'S STUDIO—ILLUSTRATION FROM *Moderns Kunst*.

#### Prof. Bega's Studio.

The above illustration of Prof. Reinhold Bega's studio in Berlin, graphically displays a busy sculptor's workshop. A number of models are in hand and in the background is the main part of his equestrian group of Emperor William I., the national monument to his memory, for which the commission was given by the present Emperor, in accordance with a special act of the legislature. It represents the old warrior in his army uniform, his cloak thrown over his shoulders, and with his field-marshal staff in hand he sits on a proudly advancing horse which is led by the goddess of victory who is carrying palms. The granite socle on which the group is to stand is thirty-two feet in height. On the broad side of the socle will be beautiful reliefs, representing war and peace; below this a figure of a man whose appearance is aimed to repeat the allegory of the reliefs. On the other ends are various insignia, and on the sides a number of symbols of the state.

At the corners are to be four goddesses of victory

with wreaths in their outstretched hands, and these are the special creations of the professor himself.

The socle will rest on a base consisting of twelve steps. On each of the advancing four corners splendid lions in different poses find place.

The entire monument will rest on a platform, partially surrounded by a semi-circular architectural structure. The total height to the top of the Emperor's helmet is sixty-eight feet; the architectural structure thirty-four feet by two hundred and fifty feet across and one hundred and forty feet deep. Two highly ornamented gates, surmounted by trumpeting angels lead into this structure from its ends, and over these ends are goddesses of victory again, driving four horses and carrying banners of war.

There are numerous other figures to be scattered at appropriate points about the architectural building, and the whole monument is among the grandest and most elaborate of modern national memorials, and a magnificent tribute to the sturdy old emperor.



REGULAR EDITION.

- CONFEDERATE MONUMENT, Oakwoods Cemetery, Chicago, page 363.
- SCULPTURE, at the Exhibit of the National Sculpture Society, pages 364-365.
- ENGLISH MEMORIAL CROSSES, pages 366-367.
- MOSAICS, Page 368.
- THE STARK MONUMENT in Forest Home Cemetery, Milwaukee, page 369. New England Monument Co., New York, designers and contractors. The monument is made of Rose Westerly granite and has the following dimensions: Base 5' 6" x 5' 6", pedestal 5' 5" high. Urn 2' 6" in diameter, 5' 6" high, in one piece, all polished. Total height 12' 0", cost about \$1,800.
- MONUMENT TO FRENCH SOLDIERS, for Sedan, A. Croisy, Sc., page 370.
- INTERIOR OF PROF. BEGA'S STUDIO, page 371.
- BARTHOLDI'S GROUP AT PARIS SALON, page 376.
- DESIGN FOR A MARKER—by W. A. Richards, page 378.
- ADDITIONAL ILLUSTRATIONS IN INTERNATIONAL EDITION.
- THE ISHAM MONUMENT, in Dellwood Cemetery, Manchester, Vt.
- ORIGINAL DESIGN FOR A SARCOPHAGUS MONUMENT, by Whitehead & Riekers, New York.
- AN ENGLISH MEMORIAL. Rock hewn base, represented with cut flowers supposed to have been strewn upon it, with ferns growing from interstices. Cross imitation rustic wood, supposed to have been stood in its base until passion flowers had been entwined about it. Head and one arm of cross carry a crown of thorns in imitation of original, through and among which passion vine has spread.
- THE W. F. FOSTER MAUSOLEUM, Woodlawn Cemetery, New York. Designed by John Woolley, architect, New York. The exterior is constructed of Concord granite and the vault with spaces for ten bodies is lined with Italian marble. The doors to the crypts are made of cast bronze from a special design. The structure is in the form of a Greek cross, it is 38' 0" in diameter and stands 50' 0" high. It was built by the New England Granite Co.
- TWO DESIGNS FOR TABLETS—by Richards & Trowbridge, Quincy, Mass. The dimensions of the "Lettie" design are as follows: Base, 2' 8" x 1' 8" x 1' 0". Tablet 2' 0" x 1' 0" x 1' 6".

**Notice.**

We will begin next month illustrating a series of fifty or more of the monuments recently erected in the new Military Park at Chickamauga, Tenn.

The bill before the Tennessee legislature for a monument to State troops at Chickamauga, calls for \$10,000.—The G. A. R. post and Women's Relief Corps will erect a monument in Woodlawn Cemetery to cost \$1,300.—Funds are being collected for a monument to the Rev. A. M. Garin. \$1,400 is in hand.



**St. Louis, Mo.** The commission to execute the statues of Benton and Blair will meet soon at the Southern, St. Louis, Mo., to receive models and propositions for the work, at which time a contract will be awarded. \$12,000 was appropriated by the legislature. Col. Birch is secretary of the commission.

**Alton, Ill.** The Illinois Legislature has passed the bill appropriating \$25,000 for the erection of a monument to Elijah P. Lovejoy at Alton. An additional \$25,000 is to be raised from local sources.

**Louisville, Ky.** The Union Soldiers' Monument Association has organized to erect a monument to the memory of the federal soldiers at Louisville.

**Washington, D. C.** The American Medical Association, at its recent meeting at Baltimore, took another step towards the erection of a monument in Washington to Dr. Benjamin Rush, the soldier physician of the Revolution and a signer of the Declaration of Independence. It is said congress will erect the base, and the statue is placed at \$20,000 to \$25,000.

**Danube, N. Y.** The bill appropriating \$3,000 for the erection of a monument in memory of General Herkimer at Danube, N. Y., has passed the New York assembly and been signed by the governor.

**Fort Greene, N. Y.** The Brooklyn branch of the Daughters of the Revolution have determined to erect a monument at Fort Greene, over the tomb of the prisoners of war from the prison ships of Revolutionary days. \$10,000 is the proposed amount.

**Athens, Pa.** A monument to Prof. Augustus C. Merriam, formerly president of the American Archaeological Society, is to be erected by that society at this place.

**Chicago, Ill.** A bill has passed the Illinois legislature appropriating \$25,000 for the erection of a monument to Pere Jacques Marquette.

**Antietam, Md.** The Nineteenth New York Volunteers, Hawkin's Zouaves, will erect a \$5,000 monument to the memory of their fallen near Sharpsburg.

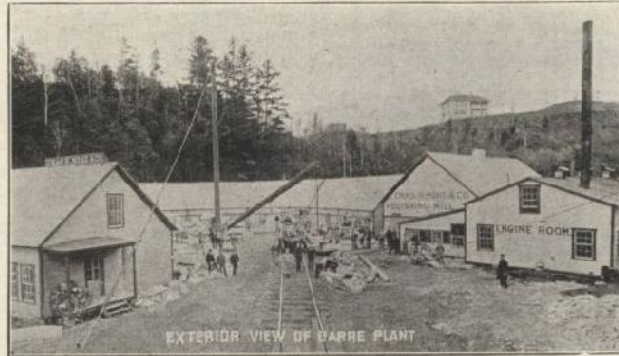
**Lansing, Mich.** A statue to cost \$10,000 in memory of the war governor, Austin Blair, has been decided upon by the Michigan legislature, to be erected at Lansing. The bill authorizes the appointment of a commission to select sculptor and supervise the work.

**Old Town, Me.** The G. A. R. post and the Ladies Relief Corps will erect a soldier's monument at Forest Hill Cemetery to cost about \$2,000.

**New Lebanon, N. Y.** A monument is to be erected to the late Samuel J. Tilden in the cemetery at this place to which his remains are to be transferred.

**Concord, N. H.** The New Hampshire legislature has appointed a commission to erect a statue to Franklin Pierce, once president of the United States. Hon. John M. Mitchell, treasurer. Senator Chandler has made a generous contribution to the fund, but it is to be hoped that if the Senator has a voice in the work, it will not be sent abroad as was the case with his recent gift to the State of New Hampshire.

**Harrisburg, Pa.** The senate bill authorising County Commissioners to erect Soldiers' and Sailors' memorials at county seats has passed.



EXTERIOR VIEW OF BARRE PLANT

# CHAS. H. MORE & Co.,

Exclusively Wholesale. Our own Barre, Swedish and Labrador Stock.

## Quarriers, Cutters and Polishers

Of the Celebrated Barre and other New England Granites. Also Im-  
porters of Swedish and Scotch Granites and Italian Marble Statuary.

MAIN OFFICE,  
BARRE, VT.

FOREIGN OFFICE,  
107 UNION ST., ABERDEEN, SCOTLAND.

WESTERN OFFICE,  
53 DEARBORN ST., CHICAGO, ILL.

*Special Hand-Made Designs supplied at reasonable rates.*



INTERIOR VIEW OF PLANT AT MONT-ELIER.



No one will deny that the most beautiful and artistic effects can be obtained through the combination of metal with stone, when such combination is effected in a proper spirit. Nor is the use of metals, as applied to monumental art, a new thing. It had its birth in the mists of past ages, and monuments and relics hundreds of years old, discovered during the present generation, give evidence that the art of Metallurgy was well understood and practiced by the ancients.

Glancing back only as far as the middle ages, what exquisite specimens of metal work, some of them unequalled to this day, present themselves to our admiration, in church and palace. Looking, for instance, at the famous bronze doors in the Baptistery at Florence, Italy, the production of Lorenzo Ghiberti, an Italian sculptor of the fifteenth century, what a revelation they are to us of mechanical perfection and artistic genius.

During the past few years great strides have been made in the use of metals, especially Bronze and Brass, as decorative agents. Two reasons are mainly responsible for this, the first one being due to the development of the æsthetic taste among our people, and the second to the fact that the wonderful advancement in the perfection of mechanical appliances in recent years, has made it possible to combine artistic and mechanical excellence at an element of cost comparatively small.

The excellence of proportion and harmony of design in structures of any kind is of as much importance as perfect construction.

Taking examples from the subject under discussion, nothing is more displeasing or irritating to the eye than to see a Tomb of an elaborate style of architecture, closed with a door of perfectly plain design, or *vice-versa*. The effect could be called a misfit.

A door of the elaborate Corinthian order, placed on a Tomb severely Doric, while not absolutely incorrect, would certainly not look as well as if the door were of a more severe character.

It is not sufficient to place a door or gate on a Tomb; if this is not done in a spirit of harmony with the rest of the structure, the result is invariably displeasing, and the object is far from having been achieved. On the other hand, the design of

a door may be in perfect harmony with the structure itself, and yet be very deficient in point both of construction and finish, this being unfortunately too often the case, especially where the manufacturer has in view solely the pecuniary aspect of the transaction. These details have their importance, when we consider that Monuments and Tombs are built, not for a few years only, but practically for all ages, and that in them should be combined, as much as possible, the different elements that constitute beauty and perfection.

One of the main requisites of Metal Work, especially that adapted to Monumental purposes, is proper construction, insuring durability; and it is here that a spirit of false economy often defeats the end in view. Without exaggerating, it may be said that not more than half of the bronze work to be seen in our cemeteries is made to meet the above requirements. It often comes from the fact that frequently an insufficient allowance is made for the work.

The term "Monumental Bronze Works" embraces a rather extensive variety of forms among them the following: Doors and Gates, Window Grilles and Sashes, Memorial Tablets, Portrait Medallions and Relief Panels, Busts and Statuary, Cinerary Urns, Stone Door Fittings, Frames for

## POINTS ON

## GRANITE

.... NO. 34 ....

**Will it pay you to give us a trial,** when you are needing any of the following named Granites,—Quincy, Barre, Westerly, Scotch and Swede?

**We think there is no doubt of it.**

## Jones Brothers,

MAIN OFFICE, 53 and 55 Kilby St., BOSTON, MASS.

Western Office: Tacoma Building, Chicago, Ill.

Foreign Office: Palmerston Road, Aberdeen, Scotland  
Quarry and Works: Barre, Vt.

# CASEY & SHERWOOD, GROTON, CONN.

Monuments, Statuary, **RED AND GRAY**  
Mausoleums and **GRANITE** ~~~~~  
Building Work in **FROM OUR QUARRIES IN MAINE.**



ROUGH STOCK IN CARGO  
AND CAR LOAD LOTS.....

Our GRAY GRANITE is specially adapted for Fine Carving and Statuary Work.

We make a specialty of Polished Columns and Pilasters in our RED GRANITE.

Ceilings, Catacomb Handles, Ornaments, Lettering, etc.

Doors and Gates constitute one of the prominent features in a Tomb, and might almost be said to represent the point of focus of the whole structure. It is for that reason that the greatest amount of care should be bestowed upon them in the matter of design, which should combine the appearance of solidity with purity of outlines and artistic effect.

The variety of designs applicable to this class of work is so extensive that no rule governing the different points of design can be given, even in the most general way. The question as to whether a door shall be made into panels, more or less ornamented, or whether the design is not to be made after any set pattern is, of course, left to the taste of the designer.

Window grilles should be made with a view to strength as well as beauty. For an unpretentious structure, a plain bar window grille with spear head finish, and possibly a filling in of wrought scroll ornamentation does very well. For more expensive work, the designs can be made very elaborate, either in cast or wrought work. When possible, the design of window grilles should harmonize with that of the doors and gates. As in doors and gates, the metal used in window grilles should be solid, and not hollow. *Paul E. Cabaret.*



**Bedford  
Monumental  
Works.** Wholesale  
Dealers in

Statuary, Rustic  
and Rockfaced  
Monuments,  
Markers, Vases,  
Settees, Turned  
Work, Bases,  
Sawed and  
Dimension  
Stone Etc. Etc.

We make a specialty of

**RUSTIC  
MONUMENTS**

which we guarantee to be superior in finish to anything produced in Bedford Stone.

\* Fine Paris Panel Designs \$2.00 per dozen. Send your tracings for estimates.

Lock Box 465,

**Bedford, - - Ind.**

## Monumental Notes.



MONUMENT IN PARIS SALON, 1895. "SWITZERLAND SOFTENING THE ANGUISH OF STRASBURG DURING THE SIEGE OF 1870." BY F. A. BARTHOLDI, SC.

By the will of John Herron, late a wealthy Indianapolis, Ind., citizen, the Indianapolis Art Association will probably receive \$225,000 for the establishment of a permanent home for Art in Indianapolis, and an Art Museum.

A plan is proposed to raise funds for placing a monument at a point near Donner Lake, Cal., where the Donner party wintered 48 years ago. C. F. Glashan, of Truckee, has sent out a circular in which he says the last log remaining of the Donner cabins was the foundation log of the Murphy cabin. August 12, 1893, forty-six years after it was placed in position by the snow-bound emigrants, it was taken up and portions of the wood have been placed in 5,000 vials. These vials will be sold at \$1 each, and the net proceeds will be devoted to the erection of a suitable monument to the Donner party, to be built at the site of the cabins, near Donner lake. The remnants of the log and the 5,000 vials filled with the wood, are in the Rocking Stone Tower. It is proposed to sell these vials at \$1 each postpaid,

and they may be obtained of the above gentleman by addressing him at Truckee, Cal.

At Evergreen Cemetery, Portland, Me., a soldiers' monument was dedicated. A bronze figure carrying a flag surmounts a granite base.

Jules Roulleau, the sculptor of the statue of Carnot, for Nolay, France, died in April.

The Tipton County Confederate Association unveiled a monument last month to their dead at Covington, Ky.

The monument to the late Dr. C. E. Martin, a learned apostle of free thought, recently erected in Maple Grove cemetery, Wichita, Kas., after a design suggested by the doctor himself. It is about 6 feet in height, is severely plain except as to the heavy granite cap stone, which is cut into accurate representation of successive series of books. Upon one large book, lying flat, five books, standing on their edges, are represented, and surmounting these are two more books, lying flat. The largest book upon which all the others rest is inscribed upon the back "Free Thought Library," and the remainder of the books have the names of Voltaire, Ingersoll, Tom Paine and others of similar belief cut upon them. The monument is unusual in design and serves the double purpose of keeping alive the memory of the departed as well as his peculiar beliefs.

The monument erected and dedicated at Lawrence, Kas., in memory of the victims of the Quantrell raid in which the guerilla killed some 150 people, and which occurred August 21, 1863, is of sarcophagus pattern. It has been constructed of dark Barre granite at a cost of \$2,000 by A. F. Blauw, the local dealer. The monument is eight feet four inches by five feet two inches at the base. Its height is nine feet, and the estimated weight is 50,000 pounds. Upon its front is a descriptive inscription and the reverse also bears another telling where roll of names may be found.

The obelisk of Orsotasen, one of the earliest and finest of the Egyptian obelisks, is still standing at Heliopolis. It is inscribed with the name of Orsotasen, one of the greatest rulers of the twelfth dynasty. It is 67 feet 4 inches in height, without the pyramidion which crowns it, and is a splendid block of granite weighing 217 tons. It must have required immense skill to quarry it, to transport it from Syene, and, finally, after finishing it, to erect it where it now stands, and has stood for 4,500 years.



**Wm. C. TOWNSEND**  
**Importer & Manufacturer**  
 of  
**Scotch No. 10 Red Swede** and  
**Imperial Blue Pearl Granite**  
**Quincy, Barre and Concord.**  
**ITALIAN STATUES & MONUMENTS**  
**NEW YORK CITY. 138, FIFTH AVE.**  
**ZANESVILLE, O.**  
**Aberdeen, Scotland. Carrara, Italy.**

It is reported from Athens that excavations of the American School of Archæology at Herarion and Argos, directed by Prof. Charles Waldstein, have been resumed and employment given to some 250 workmen. The work has been successful. Besides the two temples and five buildings previously discovered a large colonnade forty-five feet long, and well preserved, has been found 250 feet below the surface and to the south of the second temple. The excavators have also found parts of metopes, two marble heads of the best Greek period, a hundred objects of bronze and gold, gems, vases and terra cottas of the Homeric period, also numerous scarabs, several Mycenan tombs and an Argive inscription of bronze, possibly of a religious character. The excavations which are now in their fourth season, will be completed this year. They rival the French excavations at Delphi in magnitude and importance, and the objects found represent all the periods of Greek life, from the prehistoric to the Roman, and give specimens of the sculpture and architecture of the Pricilean age. They have already produced more material for the history of the earliest ceramic art than was discovered in any previous excavations, including those of Dr. Schliemann.

\* \* \*

George H. Thomas Post, No. 5., G. A. R., dedi-

cated a monument at Rose Hill Cemetery, Chicago. It was a single boulder of granite, about five feet square by twelve feet high, having an inscription cut on a polished shield. In another place near the top is cut "The Rock of Chickamauga."

\* \* \*

At Columbus, Wis., a granite Soldiers monument was dedicated by the G. A. R. It was furnished by Turner, Blumenthal & Miller.

\* \* \*

Among the latest acquisitions made by the authorities of the Louvre is a statuette sculptured in wood, which has been purchased for 10,000 francs. According to M. Maspero, the renowned Egyptologist, the work of art in question dates back to the eighteenth dynasty of the Pharaohs. It represents a lady of that period lightly draped in a robe of transparent gauze, and in the opinion of the expert the beauty of the carving and delicacy of the proportions render the statuette the most remarkable piece of sculpture which has been discovered in Egypt during the present century.

\* \* \*

Downing Post, No. 321, G. A. R., dedicated a monument at Virginia, Ill. A life size statue of a soldier stands upon a pedestal eleven feet high, with a base eleven feet square, the whole of Bedford limestone. Designer and contractor, John S. Martin, Virginia.

## Series No. 2.

## Original and Practical Designs.

A collection of designs costing \$150 or more

to be executed by hand, at a minimum cost.

23 Designs of popular and saleable styles retailing for less than \$500 For \$5.00

on 20 separate sheets, 14x21, with book of sizes (3 to each job) and wholesale and retail prices in four popular granites.

Expressage paid when cash is sent with order.

The cheapest and most practical Designs ever issued for the trade in general as evidenced by the many unsolicited testimonials received.

Special Designs and Photographs for the trade.

Chas. H. Gall,

1027 Graceland Ave., Chicago, Ill.



# EPITAPHS

Hang her an epitaph upon  
her tomb.  
—Shakespeare.

A queer mountain epitaph cut in a rude cross:

He had sand in his craw,  
But was slow on the draw;  
So we planted him out in the dew.

On the opposite side:

John Doe, New York,  
Too fresh—44 caliber,  
Kilt by 'Old Hall,' and a gun.

In South Park, Col., ten years ago, could be seen, roughly cut on a board; the following sad lines:

Snowed in and dying. January 15, '58. I am the  
last. Peace. JERRY D—T—T.

On a monument in the South burying ground, Nantucket:

Here lies the body of my wife,  
Though very dear she's not laid here.  
Some private grief was her disease;  
Laid to the north her friends to please.

The following is reported from India:

Sacred  
To the memory  
of the  
Rev. ——— Sonnenthal.  
He translated the Scriptures into the Afghan tongue  
and was shot by his own chowdeydar.  
Well done, thou good and faithful servant.

A certain Robert Kemp wrote above the tomb

of his beloved wife the following Micawber-like epistle to the Almighty:

She once was mine,  
But now, oh Lord,  
I her to thee resign,  
And remain your obedient, humble servant,  
ROBERT KEMP.

Upon the grave of a miser:

Here lies old Father Grippe, who never cried Jam  
Satis;  
'Twould wake him did he know you read his  
tombstone gratis.

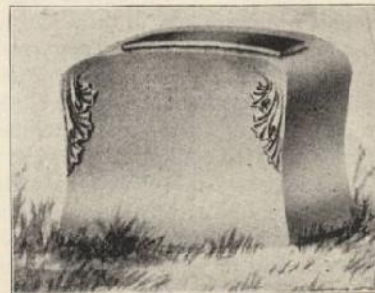
The following is to be found in the Cross Kirk-yard, Shetland, on a handsome mausoleum:

Donaldson Robertson.  
Born 1st January; died 4th June, 1848; aged 63  
years. He was a peaceful and quiet man, and to  
all appearances a sincere Christian. His death  
was very much lamented, which was caused by the  
stupidity of

Laurence Tullock, of Clotherton,  
who sold him nitre instead of Epsom salts, by  
which he was killed in the space of three hours,  
after taking a dose of it.

Upon a stone in the churchyard of St. Nazaro, in Florence:

"Johannes Divultius,  
Who never rested,  
Rested ————— hush!"



DESIGN FOR A MARKER, BY W. A. RICHARDS.

## “A CHANGE”

We have not **changed**, except that we are continually improving our service and increasing our facilities, both in America and abroad.

The “change” we refer to is one which you will notice if you let us build your work, whether large or small.

You will find your orders filled quicker and more satisfactory, than you are in the habit of having them.

We believe our salesmen are carrying as fine a line of designs as you were ever shown. Ask them to show you No. 323.



## WATTLES.



The Indiana Marble and Granite Dealers' Association decided at the winter meeting to forego having a summer meeting this year on account of the excursion to the quarries. It is expected that many of the Indiana dealers will join the party.

The Michigan Marble and Granite Dealers' Association, under whose auspices the excursion to the marble and granite quarries of New England is to be taken in August, will probably hold its Summer meeting at some time during the excursion. This is in accordance with the sentiment expressed at Detroit last winter and it is hoped that there will be a large delegation of Michigan dealers present.

The Quarry Owners' Association and the Cut Stone Contractors' Association of Chicago gave a banquet to about two

hundred members and friends on Saturday evening May 25th at the Tremont House, Chicago. For an hour or more preceding the banquet a very pleasant reception was held which afforded opportunity to accomplish in a pleasant way what is found difficult to do by other means—to get those interested in associations together for social intercourse. After doing ample justice to the tempting menu of a dozen courses, speech making was indulged in until the “wee sma hours.” Hon. Martin B. Madden, Chicago's well known Alderman officiated as Toastmaster. Addresses and papers were given as follows: The Press, Robert C. Mc Lean of the *Inland Architect*; Stone, Natures Building Material, Henry Struble; Spalls, D. H. Ranck of *Stone*; Associations, their Future Missions, Frederick P. Bagley; The Architects, P. B. Wright. These were followed by several impromptu addresses. Music was furnished by a mandolin orchestra and singing by the Sohmer Quartette.

We are unofficially informed that the summer meeting of the Iowa Marble and Granite Dealers' Association will probably be held at Des Moines late in June or early in July.

### Excursion to the Quarries.

The Committee appointed by the Michigan Marble and Granite Dealers' Association to make the necessary arrangements for an excursion of western monument dealers to the New England marble and granite quarries during the summer, have decided on August 19th as the date for leaving Chicago. This will enable the party to take advantage of the extraordinary low rate offered by the railroads during the Knights Templar conclave at Boston and will undoubtedly make a material difference in the size of the party. The committee will issue a circular early in June designed to furnish all of the necessary

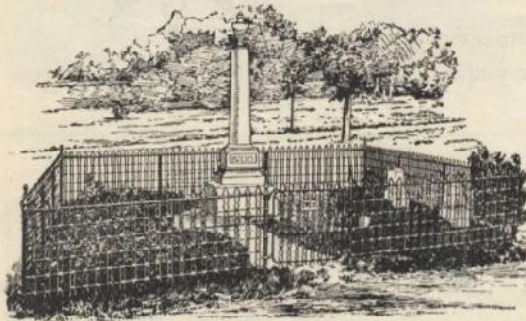
### 1895 Design Book.

11x14 inches, heavily bound in cloth.

About completed, contains a choice selection of some **60 New Designs**. Worth \$100 to every firm wishing to keep up with the times. Price \$6.00 per copy. Write for sample sheet.

We will gladly send you **Stock Sheets** of some very choice work ready for shipment at very attractive prices if you will drop us a card. Write for our prices on your **Quincy, Barre, Westerly, New Westerly**, and Imported Granite orders. We will give you a class of work that will assist you in making future business. **Unsolicited** testimonials from hundreds of the very best Manufacturers and Retail Dealers leads us to believe that **Randalls Iron Solvent** (for which we are sole Agents) will remove **Iron Rust, Acid Stains**, or any other **Discoloration** on Granite where all other preparations fail. **\$1.25 per Box** Post paid.

**E. C. WILLISON,** 110 Boylston St Boston. **ABERDEEN, SO. QUINCY, MONTPELIER**  
 Manhattan Bldg, Chicago. \*



## HARTMAN STEEL PICKET FENCE.

Stronger than Iron.  
 Cheaper than Wood.  
 Handsomer than either.

**All Steel.** One solid structure, bolted together and anchored, into the ground. Thousands of miles of it in use for Cemetery purposes and always approved.

**Examine** into the merits of this fence, before buying any sort Get circular, catalogue and estimates from your dealer or

**HARTMAN MFG. CO.**

Gen'l Western Sales Agency, 601-602 Manhattan Bldg, Chicago. Gen'l Eastern Sales Agency, 277 Broadway, New York. Factories, Ellwood City, Penna.

information in regard to rates, dates, route etc. The route as at present outlined contemplates leaving Chicago over the Chicago and Grand Trunk R. R. to Kingston, thence down the St. Lawrence River to Montreal where one day and night will be spent. Two or three days in Montpelier and Barre, part of two days in Rutland, and three days or more at Quincy and Boston. The return tickets are not good leaving Boston until August 30th which insures ample time for sight seeing in and around that historic city. The rates announced by the railroads to the Knights Templar Conclave are about one fare for the round trip. It is expected that reduced hotel rates will also be secured. Considerable interest is being manifested by western dealers in this excursion and quite a number have already signified their intention of joining the party.

#### Recent Legal Decisions.

After one party to a contract has performed a substantial part of the same, unless he can be placed in his original condition, the other party cannot rescind for his default in further performance, but is limited to an action for damages for such breach of the contract.

In all actions for damages, the wrong done and the injury sustained must bear towards each other the relation of cause and effect, and the damages must be the natural and proximate consequence of the act complained of.

The law says that every one who breaks a contract shall pay for the natural consequences arising from the breach thereof, which must include gains prevented as well as losses sustained, provided they are reasonably certain, and such as might naturally be expected to follow the breach.

It is a generally recognized rule that, when the language of a guaranty is not so clear as to indicate its meaning conclusively,

## CROSS & ROWE.



**WHOLESALE  
 RUSTIC  
 WORKS.**



**BEDFORD,  
 INDIANA.**

Manufacturers of

Rustic Monu-  
 ments, Vases,  
 Settees, Chairs,  
 Markers and  
 Log Curbing.  
 Estimates  
 given on any  
 work in Bed-  
 ford Stone.

**Photogravure  
 Designs.**

On sheets 11x14 inches, \$2 per dozen.

# CHAIN BLOCKS.



Yale-Weston Differential. Yale Duplex. Yale-Weston Triples.

## Differential Pulley Block

Greatest Simplicity.  
Freedom from Derangement.  
Lowest Cost.

## Duplex Screw Block

Convertible to "Safety" or "Dispatch" Lowering at will.  
Highest Efficiency of any Screw Block.  
Thorough Lubrication without Leakage.

## Triplex Spur-gear Block

Highest Efficiency. Minimum Overhead Room.  
Maximum Saving of Labor,

## THE YALE & TOWNE MFG. CO.

General Offices, 280 Broadway, New York

### SALESROOMS:

NEW YORK,  
PHILADELPHIA.

BOSTON.  
SAN FRANCISCO.

BUFFALO,  
CHICAGO.

verbal evidence is admissible to show the circumstances under which it was executed; that it may be construed in the light of all material facts, to the end that the intent of the parties to it may prevail.

The master is required to furnish the servant with proper and suitable tools and instruments for his use, and a safe and proper place in which to perform his work, and while requiring the performance of work by a servant in a place which may be or has become dangerous, and such danger may be foreseen and guarded against by the exercise of reasonable care and prudence on the part of the master, it is his duty to exercise such care and adopt such precautions as will protect the servant from avoidable danger; that is to say, such as may be avoided by the exercise of reasonable care and caution on the part of the master.

The unauthorized act of an agent, when ratified by his principal, is as binding as though the act had been within the scope of the agent's authority, and the principal, by accepting the benefits of an unauthorized act of his agent, may thereby ratify the act; but in order for the act of the principal, in accepting the fruits of a transaction conducted by his agent, to work a ratification of the agent's act, the principal must have accepted the avails of the transaction with knowledge of all the material facts.

#### GIVING NEW NOTE CUTS OFF DEFENSE.

Where a debtor by promissory note and his creditor meet and have an accounting and settlement, and the debtor gives a new note for the balance due, in renewal of the old note, the supreme court of Georgia holds that the debtor, when sued thereon, cannot, without alleging fraud or mistake, set up, in a plea of payment, alleged credits which ought to have been made upon the first note.

#### VALIDITY OF UNRECORDED CHATTEL MORTGAGE.

Where the holder of a chattel mortgage, neglects to file

his mortgage, or a copy thereof, in the office of the register of deeds, as required in Kansas, but claims a delivery of the property to him, the supreme court of Kansas holds that he must show an actual and continued change of possession of the thing mortgaged, and where it appears that no actual change of possession was had, the mortgage is absolutely void, as against creditors of the mortgagor.

#### RULES IN WHICH COMMERCIAL TRAVELERS CANNOT POSE.

A person whose business it is to travel and secure customers, and whose compensation is by commissions on sales effected by or through him, the supreme court of Pennsylvania holds is not a "clerk" within the meaning of a statute which gives a preference to wages due to "clerks employed in stores or elsewhere." And by a decision of the supreme court of Georgia a commercial traveler, whose business it is to travel and sell goods for his employer, though employed and paid for his services by the day, is not a "day laborer," in the sense in which those words are used in an exemption law. Indeed, this court says, a gentleman of his profession occupies a much higher station, socially and commercially, than that of a mere "day laborer," as that term is commonly understood.

A monument is to be erected at Schwerin, Germany, to the memory of Heinrich Schliemann, the Grecian archaeologist.

\* \* \*

A project is on foot by the French people, to raise a monument on the field of Waterloo, commemorating the valor of the French soldiery, and in memory of the fallen.

CHARLES L. STRONG.

HERMAN W. GRANNIS.

# STRONG & GRANNIS, 3 UNION SQUARE, NEW YORK,

Invite dealers to send

## Tracings, Plans, Designs Etc. <sup>FOR</sup> Estimates

We represent as

**SELLING AGENTS,** one well-known quarry and manufacturer in each *Leading Granite Centre.*

**No jobbers' profits added. Our prices are same as those of our principals.**

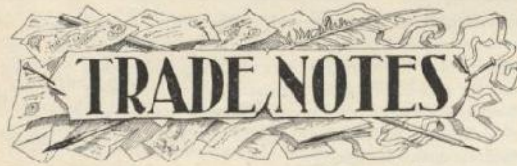
**GRANITE:** Quincy, Barre, Milford,  
Westerly, Concord, Petersburg,  
French Pond, Brookline,  
Scotch, Swede, Millstone Point,  
Red Beach and all others.

**MARBLE:** Tennessee, Georgia,  
St. Lawrence,  
Pennsylvania Blue,  
Florence,  
Italian.

**Granite and Interior Marble Work for Vaults, Buildings, Etc.**

**Rough Granite, all kinds, in Car or Cargo Lots.**

**FREE:** Our New Designs, Photo Half-Tint, Nos. 150 to 154. Sarcophagus and Rustic, will be sent free to all who apply for them, One as low priced as \$40.00.



Are you going on the excursion to the quarries?

Fall prospects are very good, writes H. C. Moody from Iowa.

"There is lots of work to be sold," writes W. O. Willison from Wisconsin and retailers in general expect a good fall business.

John Lacmer, for many years identified with the marble trade in and around Philadelphia has taken up his abode in Chicago.

Trade is much better than it was a year ago and the outlook for summer and fall is good, is the encouraging report from John M. Batchelder, Dixon, Ill.

When you put up a monument, of which you feel that you have reason to be proud, send a photograph or a sketch of it to the MONUMENTAL NEWS.

From down in Pennsylvania George R. Watkins writes: "The outlook for summer and fall trade over my territory is good. Business is fully as good with me as it was last year up to date."

Mr. J. R. Guindon of Lynn, Mass. has sent the MONU-

Elizabethtown, Pa.

W. Leland, Esq., Carrara, Italy.

Dear Sir:—Enclosed find check for \$5, for which you will please send me another copy of your Design Book. I have received the one ordered Dec. 17th, and find it a necessity to have another copy.

Yours truly, H. U. COBLE.

MENTAL NEWS a photograph of a beautiful marble monument recently erected on his cemetery lot. We hope to illustrate it in our next issue.

In the section devoted largely to dairy products and in the oil producing districts, Horace Watson, Columbus, Ohio, predicts a good summer and fall trade. He says business is better in his territory than it was a year ago.

Martin Donohue, Cincinnati, Ohio, has the contract for a large shaft monument to be erected in Spring Grove cemetery, Cincinnati. The bottom base will be 10 feet square and the shaft 36 feet in length. It is now being cut at Barre.

Jaeggli & Martin of Brenham, Texas, were awarded the contract for the monument to be erected to the Volunteer Firemen of Texas. The monument is to be built of Texas granite from an original design by Allen Brothers of Indianapolis, Ind.

"Trade is picking up and we feel that the worst times we have experienced for years are most over" is the gratifying report that comes from Searles & Baxter, Cedar Rapids, Ia., accompanying an order for a continuance of their subscription to the MONUMENTAL NEWS International Edition.

This has been an exceptionally busy season with W. T. Ashford whose well stocked yard is located opposite the entrance to Oakwoods cemetery, Chicago, one of his best sales being for a shaft monument to stand nearly forty feet in height. Mr. Ashford thinks of taking in the excursion to the quarries.

The following is an extract from one of the inscriptions on a monument recently erected by W. T. Cooper & Brother, Buffalo, N. Y., for a prominent family of that city. It is stated on another side that "John Tift removed from Exeter, R. I., to Nassau, N. Y., in February, 1793, with his wife and eight chil-

The Carrara Design Book will be sent you upon receipt of a \$5 bill, or New York Draft for \$5. Address Wirt Leland, Carrara, Italy.

dren, one span of horses, two yoke of oxen and farm stock." The pioneers had twelve children whose names are also inscribed on the monument.

Henry D. Pierce, Manager of the Chicago branch of the Vermont Marble Co. was recently elected president of the Town of Cicero a suburb of Chicago. His inaugural address to the Board of Trustees of the town, a copy of which has been received, bespeaks a business like administration of the affairs of the community.

Manager C. G. Leavenworth of Cleveland, Ohio, informs MONUMENTAL NEWS that the demand for monumental work in western Pennsylvania has been greater this spring than at any time since 1891. Business has been very good with the Cleveland branch and the outlook for summer and fall is thought to be more encouraging than it has been for the past two years.

C. J. Ambrosius, western representative for C. H. More & Co., dropped in on the NEWS last month on his return from Michigan. He found trade improving and among other good orders taken among the Wolverines, was one for a \$5,000 mausoleum. The recent cold spell has centered interest on the fruit crop, but Mr. Ambrosius thinks many of the reports have been exaggerated. Grapes and strawberries have been severely injured but the damage to peaches and apples is not so bad as at first reported.

Mr. James Harsha of Circleville, Ohio, who has been failing in health for some time, died April 27th at the age of 62 years. Mr. Harsha was an ardent advocate of monumental dealers' associations and did all in his power for the success of the Ohio Association, of which body he was president for several terms. He was also the first president of the National Association of Marble and Granite Dealers, an Association organized several years ago. Mr. Harsha had been engaged in the monument business at Circleville for the past thirty-five years. He was a highly respected citizen and one whose loss is mourned by the community.

H. O. Brower of San Francisco, Cal., spent a few days in Chicago last month on his return homeward from an eastern trip. Mr. Brower has been on the coast about five years, having gone there from Colorado. He reports business in that section as showing a decided improvement and like all Californians thinks that state the only place on earth worth while living in. Mr. Brower has been very successful in securing contracts for important monumental work among which may be mentioned the memorial erected by the Odd Fellows of the state of California to Past Grand Sire Farnsworth, a G. A. R. monument and a \$10,000 vault for the Hancock family.

Three generations of the Powell family of Logansport, Ind., have been identified with the marble business. Mr. Schuyler Powell who conducts the business formerly established by his grandfather is one of the most widely known men in the trade throughout the State. He is secretary of the Indiana Marble and Granite Dealers' Association, and has some very fine monumental work to his credit. The most noteworthy is probably the Soldiers' monument at Logansport, erected a few years ago at a cost of \$10,000. It is the largest memorial in the state outside of Indianapolis, and is a very creditable work. Mr. Powell began manufacturing all of his granite work several years ago, he handles principally Rockport gray and Missouri red granite. He has recently put in the pneumatic tools and is giving employment to about twenty men. The spring trade has been very good with him and promises to continue throughout the season. Mr. Powell was in Chicago last month looking up matters connected with some public work for his state which he is hopeful of securing. While at the NEWS office Mr. Powell said that he and his wife and daughter would probably go on the marble dealers' excursion in August.

## MARR & GORDON,

Manufacturers of

the Celebrated Barre Granite . . . . .

from their Dark and Light Quarries, beg to call the attention of the retail dealers to the fact that they are better equipped than ever for filling orders for Monumental and Cemetery work of all kinds.

During their twelve years experience in manufacturing Barre Granite they have found there has been a steadily increasing demand for a finer and higher class grade of work and in so far as they have been able to meet and supply that demand they attribute any little success they have attained in the business.

Let this demand continue and if dealers would insist on being supplied with only first class work and material soon a better state of affairs would exist throughout the trade and all engaged it would feel the benefits.

See our advertisement and illustrations of our work on this page from month to month and give us an opportunity to supply you with first class monumental work in Barre granite.

MARR & GORDON, D. D.

BARRE, VT.

# Ryegate Granite Works Co.

SOUTH RYEGATE, VERMONT-

Quarry Owners and Manufacturers of

RYEGATE, STANDARD AND BARRE GRANITE.

## Facilities.

Unlimited Water Power.  
McDonald Stone Cutting Machine  
Power Derricks, Turned Lathes.  
Most Improved Polishing Machinery.  
Artistic Models

## Specialties.

Platforms, Steps, Columns,  
Polished or Hammered. Round  
Rail for Cemetery Enclosures, Statuary,  
Mausoleums, Building Fronts,  
Rough Stock.

Before placing your orders for any above kinds of granite work, write us for prices.

## ALL STATEMENTS

To the contrary notwithstanding, **Aberdeen Granites** are still in front rank of hard, durable, polish retaining stock. There are now 42 different kinds of **Granite** in use at **Aberdeen**, (one half of which is native) while one firm claims to have used even 50 (vide Evening Express April 29th). If we have to give up the **Grey** per our Barre friends prophetic vision we can still be in it with some **two score varieties**. Another **New Grey** just stuck a few miles from the famous Peterhead Red Quarries closely resembles Dyce.

♦ ♦ ♦ ♦ ♦ TRY US FOR ESTIMATES ON YOUR FOREIGN WORK.

## CHAS. COUTTS.

Mansfield, Ohio,  
Direct Importer.

### Making Gypsum into Marble.

Grand Rapids, Mich., has long been a center for the plaster business, large quantities of gypsum being mined in the neighborhood and distributed.

The use of gypsum in the manufacture of artificial marble is now being established in that city, a company being in operation for that purpose, and the process of manufacture is briefly as follows:

"The gypsum is quarried in large masses, weighing anywhere from two to four tons. The rock is first sawed off in slices, varying in thickness as the nature of the article to be made requires. The rock in this stage of manufacture is as soft and easily worked as wood, which admits of its being readily sawed or turned into any required shape. The gypsum in its natural state is of a semi-transparent nature with beautiful dark tracings running through it.

"After being shaped on the machines, the rock is placed in a specially constructed oven and subjected to what is known as the dehydration process, which effectually dries out every particle of moisture. From the furnace it goes into the chemical bath, this portion of the manufacture being covered by patents. The rock is left in the bath for from twenty-four to forty eight hours, and the result is a crystallizing of the fibers so that the product is to all appearances pure marble, which is claimed to rank with the finest of marble, both in points of hardness and durability.

"After coming from its chemical bath the marble is sanded and buffed, taking a very high polish, and is then ready for the market. The company

is working on orders for mosaic flooring, ornaments for brass bedsteads, bar rails, billiard table legs, etc."

### Pictorial Mosaics.

In the interior of the Marquette building, Chicago, are some exquisite examples of mosaic work designed by J. A. Holzer. The space given for the work is 4 feet high and 100 feet long, facing an octagonal gallery. The artist divided the space into a series of pictorial panels. The three large pictures read from left to right. The first shows the seven voyageurs in their birch bark canoes in the act of shoving off into deep water. On the shore is a group of Indians and a reverend gentleman asking blessing of heaven on the daring adventurers. Over the heads of these figures is a dogwood tree, rich in pink blossoms. The second panel gives the meeting of Joliet and Chassagoac, the chief of the Illinois. Chassagoac is offering the pipe of peace to the discoverers. The group of Illinois is well arranged, and their costumes have been studied with great care. Over the third panel are the words: "To die, as he has always asked, in a wretched cabin, and, amid the forests, destitute of all human aid." This mosaic, says a writer in the *Times-Herald* of Chicago, is exquisite both in thought and execution. Its feeling is decidedly pre-Raphaelite. There are six panels dividing the larger ones from each other. They are full-length, single figures of Indian chiefs, the Canadian voyageur, a French standard bearer, and a gentleman of France.



H. D. McLEOD.

GEO. RUXTON.

# McLEOD & RUXTON,




Manufacturers of and Dealers in  
**THE HIGHEST GRADE  
OF CEMETERY WORK**

FROM BEST BARRE GRANITE.  
**Monuments, Vaults, Tablets. Headstones  
Ornamental Carving, and Statuary,  
Executed in the most Artistic Manner,**

Estimates promptly given on application.

**BARRE, VERMONT.**

Are You In Business  
FOR  
**FAME**  
OR FOR  
**PROFIT?**

 You Get Both  
if You Use  
OUR PRODUCT.

**THE GEORGIA MARBLE FINISHING WORKS.**  
CANTON, GA.

## CORRELL & BURRELL,

Wholesale

**RUSTIC  
WORKS,**

West of Bedford, on E. & R. R. R.

**ODON, IND.**



Manufacturers of

RUSTIC  
MONUMENTS  
VASES,  
SETTEES,  
CHAIRS,  
MARKERS,  
AND LOG CURBING.



Statuary and Fine Carving  
in Bedford Stone.



Send your tracings for estimate<sup>s</sup>



Send for estimate on this job.

# S. HENRY BARNICOAT



Manufacturer of and Dealer in

Quincy and all New - - - -

England Granites.

I handle only the best grades of stock and give strict personal attention to business. Guarantee all work shipped to be of best material and workmanship.

Good, Honest Work at Fair Prices - - -  
Results in Pleased Customers.

Prompt Shipments and Prompt Replies to Inquiries for Estimates. Address.

QUINCY, MASS.

*From our regular correspondent.*

## QUINCY, MASS.

The income tax would probably not have affected many of the granite manufacturers throughout the country had it been in operation the past year but it is said that more than one of the Quincy manufacturers are feeling elated over the decision declaring the tax illegal, as the business outlook with them is very bright and the prospect for a big income, the year to come, was never better.

Business has taken a jump here there is no doubt about that and the fact is no better shown than in the large decrease in the number of idle workmen.

The executive committee of the manufacturer's association and the men's union met Tuesday evening, May 21, and came to a final and satisfactory settlement on the blacksmith's bill, which has been a subject of discussion between these two bodies since March 1st.

The terms of agreement are that 13 men shall constitute a gang, for day work \$2.85 per day, extra men over a gang 22 cents each and piece work 23 cents per man.

H. H. Safford the station and freight agent at the Quincy Adams depot was discharged from that position early this month, and the circumstances caused quite a flutter among the granite dealers in South Quincy.

Safford, it was learned by a confession he made to his accusers, had for several years been raising freight bills over and above the original sum, as billed by the railroad company, and collecting the amount of his bills from the granite manufacturers and pocketing the difference. Malnati Bros. had been suspecting for some time that their freight bills on Westerly granite were a little excessive and they finally placed the matter in the hands of their attorney J. W. McAnarney.

On investigation the attorney learned that during the past

year Malnati Bros. had paid to Safford \$200 in excessive freight and all of the freight bills could not be found for comparison at that.

Malnati Bros. then brought a suit against Safford to recover and threatened arrest on a criminal charge if the case was not settled before May 7th.

Safford in the meantime was discharged from the railroad service, and there was naturally an overhauling of books by the other manufacturers, to see if they had likewise suffered by his peculations.

Safford got enough money together to fix up things with Malnati before the stipulated time and then taking his family and belongings left town. Just how hard the other manufacturers have been bitten is not known, but it is suspected that about all of them have contributed more or less to Safford's support since he came to Quincy. Safford gave as an excuse for his thieving that he lost \$100 one time of the railroad's money and was obliged to make it good out of his salary.

Better facilities and may be better freight rates combined have been the cause of a greater shipment of stone over the railroads during the past year than ever before. The N. Y. N. H. & H. R. R. since it assumed the management of the Old Colony division has not been slow to realize the competition the railroad has been obliged to meet in the carting of stone over the road and the shipment of it to New York by water by the coal vessels that leave Quincy Point. The shipment of rough stock from Quincy has rapidly increased during the past four or five years. In fact it has in this respect far outstepped the shipment of finished stone and even last year and the first of this, during the great business depression there has been an increase each month over the year previous. And especially is this noticed in the railroad shipments. The Quarry Railroad Co. has added much to the total output although it has hauled much of



## A. H. Andrews & Co.

Established in 1865.  
215 Wabash Ave.  
Chicago.

Owners and Exclusive M'rs of the justly celebrated **All Steel Indestructible** Andrews Perforated Steel Seats. Chairs—Enameled any desired color, or galvanized and Plated **Bronze, Nickel, Brass, Antique Copper, Silver or Gold** highly polished. Settees of Steel or Wood all lengths, and many styles. We furnished 3000 Lawn settees for the World's Fair Grounds. Ours being the best to be found. We solicit correspondence touching Park, Garden, Lawn or Cemetery requirements, feeling confident of pleasing the most critical dealer or consumer. Illustrated catalogue free.



### ITALIAN STATUES AND MONUMENTS

AT LOWEST MARKET PRICES

YOUR MONEY BACK IF NOT AS REPRESENTED.

## W. C. TOWNSEND.

Address: 138 Fifth Ave., New York City,  
and 5, 7, 9, & 11 Main St., Zanesville O.



Studios, Carrara, Italy.

Our Art Book tells you all about Italian Statues, price \$5.00, contains over 400 plates.

that which would have been carted over the road by teams. There was very close to 10,000 tons of stone shipped from this city during May and this was 2300 tons more than the corresponding month last year. The railroad has put in another large derrick at the Quincy Adams station which is a great improvement over the old crane.

Better freight facilities and probably a big freight depot and switching engine constantly on hand is something that the railroad officials are promising the manufacturers for the near future. The great freight center is concentrating itself at the Quincy Adams station and it is only a question of a little while when the railroad for its own convenience will have to enlarge its facilities. The place as suggested by one of the manufacturers in the MON'L NEWS sometime ago is on the vacant land between the Quincy and Quincy Adams depot near the School street bridge, and from near where it is contemplated to intersect the tracks of the Quarry Railroad Co. that are to encircle the old quarries on the common.

The beautiful statue of "Peace" which Mr. E. W. Fuller at the time of his death was cutting at the yards of Fuller, Foley & Co., West Quincy, has been completed. Mr. Charles Lena who was associated with the late Mr. Fuller at Hartford, Conn., for many years, finished the figure. Mr. Lena took a great interest in the work on which his fellow workman had left the last marks of his chisel, and all the little details and especially the beatific expression he left on those finely chiseled features, showed, not only, a love for the artistic but told more than words of that deeper and nobler feeling of fellow love and friendship. Of the many statues that Mr. Fuller had cut during his busy life none had probably drawn out his artistic ability more than did this sitting figure of Peace.

The model from which it was cut was an excellent one and its equal has been seldom seen here. At a first glance it would

## C. HENNECKE Company,



Milwaukee Wis.,

Manufacturers of

Iron Vases, Wire

and

Wrought Iron . . .

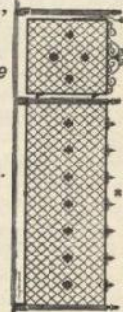
. . . Fences, etc.

Lowest Price

Guaranteed.

Write for Illustrated

. . . Catalogue . . .



## CRYSTAL BROOK GRANITE CO.,

Quarriers and Manufacturers

of the best

## Dark Hardwick Granite.

Good Work . . . Reasonable Prices . . . Prompt Shipment.  
Low Rates on Spring Delivery Orders.

Rough Stock . . .

HARDWICK, VT.

# BARCLAY BROTHERS,



Quarry Owners, Manufacturers  
and Polishers of . . .

## BARRE CRANITE.

We own and operate **Light and Dark** quarries that are producing first-class dimension stock of any size. Our facilities for Quarrying are unsurpassed, and orders for

### Rough Stock

will receive prompt attention. Our manufacturing department is equipped with Pneumatic Tools for surfacing, carving and lettering granite. Our new surfacing machine is the latest and most valuable improvement ever made in granite working machinery, and gives more

### Satisfactory Results

on large surfaces than when finished by hand. Our Column Cutting Lathes and Polishing Lathes are the largest in Barre, and our polishing mill is equipped with thirteen polishing machines. *We have every convenience for handling LARGE WORK.*

CAPS, DIES, Etc., Polished for the Trade.

**BARRE, VERMONT.**

not probably strike the casual observer as one deserving of special attention, but Mr. Fuller could sit and talk to you for hours, pointing out its many merits until you became as enthusiastic over it as did he. There was a beautiful expression on those features on which his eye used to delight to linger and he looked forward with great pleasure to the day when his masterpiece would be completed.

F. Barnicoat is one of the latest to adopt the pneumatic tool although he has had it in over a month now. It's doing good work and he finds it serviceable in statuary work with which he has been rushed for some time past. He is modelling another statue of Peace, the figure being two inches higher than that of the one that was so favorably commented upon last year, and of which he has cut four duplicates.

Swingle & Falconer have got their big polishing shop going, and their own work has more than filled the shop the past month.

S. Henry Barnicoat will put in pneumatic tools and McIntosh and Sons are also making preparations for a set of these stone punchers. These two firms on Center street and the Manet Granite Co. just above, have had plenty of work and the outlook with them is good.

Joss Bros. say that it's the young blood that is now with them that is pushing them along. However that may be Mr. Hammock keeps moving all the time, and the firm has had more than a share of the business all winter. The spring trade too came in with a rush and they are handling lots of orders at present. They are building a polishing mill right in their yard to better facilitate the rapid completion and earlier shipment of work and Badger Bros. of West Quincy, one of the best known and reliable firms in the country, will furnish the entire machinery part of the plants.

A sad accident happened at the quarry of C. H. Hardwick & Co., May 2nd. Duncan Car was guiding a stone with a piece

of board, as it was being hoisted from the quarry when the board slipped and he fell into the hole a distance of over 80 ft. He was instantly killed. He left a widow.

Fallon & Sons put up a big derrick last month and it is painted white like its mate at Hitchcock's near by and it is such a great relief to see some other color besides blue decorating these towering masts. Hitchcock "turned over" the largest stone ever quarried in the city early last month. It weighed nearly 80 tons and is for the shaft for the monument to be erected to the late John P. McDonnell of Buffalo, which is being built at McDonnell & Sons, this city.

The half holiday Saturday after June 1st is again being agitated, and there is a likelihood of its going into effect this year as the manufacturers and men favor the movement.

*From our regular correspondent.*

#### Barre Letter.

During the last month or more our manufacturers, or the most of them, have been exceedingly busy getting their work finished, shipped and set up in time for Memorial Day. Judging from the appearances of things and the reports we have obtained from the railroad officials, they have succeeded in accomplishing the ends aimed at. We have heard so much said for a long time past about dull times in the granite business, that we began to take a somewhat gloomy view of the situation, and have wondered what would become of us if a change did not soon come for the better.

In order to get at the exact facts in the case, we concluded that the proper thing to do would be to call on the proper authorities at the different railroads doing business in Barre, and ascertain how the shipments of granite for the past two months compared with the same period in former years. Mr. F. W. Strayan, Supt. of the M. & W. R. R., stated that it would be

# THE GEO. W. CLARK CO.,

MANUFACTURERS OF



## Wrought Steel Fences.

FACTORY, KNOXVILLE, TENN.

Write for Catalogue and Discount Sheet.

Offices: { No. 50 Beekman St., New York,  
Jacksonville, Florida.

impossible for him, owing to the press of other business, to give the exact amount of their shipments, but he could say with perfect certainty, that never in the history of their roads had anything near as much rough stock been shipped from the quarries, and finished work taken out of Barre in the same period of time before: he said further, that it had been simply impossible to procure sufficient cars to meet the demands.

Through the courtesy of Mr. D. H. Robinson, Agent, and Mr. Frank Place, Yard Master, of the Central Vermont Railroad, we learned that a similar condition of things had existed on that road. For a month past they have been obliged to run an extra night train out of Barre, and have employed an extra-shifting gang who have worked all night during that time, something that was never done before. From April 22d to May 22d, eleven hundred and seventy-four cars of granite were shipped out of Barre on the Central Vermont. We believe this beats the record by long odds. The largest number of cars shipped in one day on the C. V. was seventy-three, next largest number seventy two.

We are proud to confess that the foregoing statements far exceeded anything we had anticipated, and we think they ought to be a sufficient proof to any reasonable mind that Barre granite still maintains its deserved popularity.

Notwithstanding all this we occasionally meet one of those peculiar specimens of humanity, commonly called "croakers," who say that everything is going to the dogs and predict that it won't be many years before the grass will be growing in the streets of our fair city. Such men usually tell us they can remember the time when they could have bought our whole granite mountain for a song, and, not a very good one at that, and might have been worth a million, more or less, now.

We are happy, however, to be able to write that many of our most conservative and "long headed" men are investing

their money in new building sites, and are planning shops for the manufacturing of granite which will exceed in size any in existence in Barre.

Mr. George C. Mackie recently purchased about two acres of land in the south end of the city, on which he expects in the near future to erect a large shop and will put in a seventy-five horse power engine, a 125 horse power boiler, and all the latest improved machinery for the manufacture of granite. We understand that the Jones Brothers will soon begin the erection of a large plant at the north end of the city. The Eclat Granite Co., a new firm, will soon have their shops completed and ready for occupancy. It may be interesting to mention in connection with this that in all probability a larger number of dwelling houses will be built in Barre this year than in any previous year.

We naturally expect that business will be a little quiet for a time after the Decoration Day rush is over. One of the favorable indications for the future business is that there is a large number of orders in the field which some one will secure sooner or later. Several manufacturers have said to us that they never figured so much work before as in the last month or two; still the general complaint is that prices are low and collections very slow, two unpleasant features of the trade at present.

The Railway Granite Co. recently secured some unusually fine orders, among them is one which, judging from the design, will be classed among the many beautiful monuments manufactured in Barre. The total height is thirty-seven feet and is made up as follows: Three bases and plinth, die, four columns with handsomely carved capitals; a richly moulded cap; column base; above which is a round shaft fourteen feet in height by two feet six inches in diameter; a beautifully carved capital 3' 8" x 3' 8" x 3' 6", on which will stand a statue seven feet in height. This monument is for E. N. Page, proprietor of the Cohoes Rolling Mill, and will be erected in Oak wood cemetery, Troy,

**A TRIAL****Will Convince You whether it Pays to Trade with Us.**

We are now in position to quote MANUFACTURERS' PRICES for HIGH GRADE WORK. If you want a good job of CARVING or TRACING done with the PNEUMATIC TOOL, place your orders with us. It costs you a 2 cent stamp to get our quotations on BARRE, QUINCY, HARDWICK, CONCORD, SCOTCH or SWEDE GRANITE. Also, ITALIAN STATUARY. We can save you MONEY if you will consider the QUALITY of work that we can ship. Order a set of our GILT EDGE ENAMELED PHOTO DESIGNS to BOOM YOUR SALES. Correspondence Solicited.

EXCLUSIVE WHOLESALEERS OF **Granite and Statuary. F. S. CARY & CO.,** BARRE, VERMONT, OR ZANESVILLE, OHIO.

**WE HAVE IT.**

**What Marble Dealers are Looking for**—A firm making a specialty in their line. We furnish rough and sawed bases, cemetery curb and all other work connected with the marble and granite trade. Prices cheerfully furnished and work shipped promptly.

**MATTHEWS BROS.,**Quarriers and Dealers in  
Oolitic Limestone.

Ellettsville, Ind.



Harrison &amp; Purdy, Inc. U.S.A.

**GRANITE POLISHERS BEWARE****Save Money, Save Time, Save Labor**

By using Harrison Brothers Diamond Grit Globules, or Chilled Shot. This is the age that one must practice economy. It will pay every Granite Polisher or Sawyer in the United States to write for our samples and prices of Shot before buying elsewhere. All of our samples are taken from bags ready for shipment, we do not prepare our samples. Our material is durable, clean, and free from all dirt. The largest firms throughout the United States are using our material with the greatest possible success. Address all correspondence (to one of the firm).

**NATHAN C. HARRISON,**

161 TRENTON ST., EAST BOSTON, MASS.

N. Y. Another one is of sarcophagus design with three heavily moulded bases; first base is 9' 2" x 6' 8" x 1' 4"; a polished column die; cap moulded and carved on four sides. On the front is a large cluster and wreath of roses; cap surmounted by an elaborately carved finale. The members of the Railway Granite Company are practical granite cutters and carvers who have been in business in Barre many years; they are capable of manufacturing all classes of monumental work in an artistic manner.

The Vermont Granite Co. are at work on a family monument for Senator Vilas of Wisconsin. It is a spire monument with principal dimensions as follows: First base, 10' x 10' x 1' 8"; second base, 7' 6" x 7' 6" x 1' 6"; third base, 6' 0" x 6' 0" x 2' 4"; spire 4' 6" x 4' 6" x 32' 0". The spire begins to concave at the bottom and continues in graceful lines to the apex. The name Vilas will be cut in bold raised letters at about one third the height on the spire. Total weight of the monument 100,000 pounds.

Harry J. Bertoli & Company, of Montpelier, finished and shipped seven statues of various kinds this spring and have now orders for four or five more. Among those shipped was one of Christ, seven feet high. The drapery, and in fact, every part of the figure, was executed in a highly artistic manner. The firm are now at work on a cross monument, at the base of which stands the figure of an angel writing in a book. The height of cross including base, cut in one piece, is ten feet, the figure also cut in the same piece is five feet in height. This will be one of the most beautiful pieces of work of its kind ever cut in this section of the state. Nearly all the work cut by this firm is for parties who are very exacting in the work turned out, which speaks well for the firm.

Littlejohn & Milne recently finished and shipped a handsome sarcophagus design monument; Vase 8' 4" x 5' 2" x 1' 5". Total height of monument 9' 1". This monument is erected at Lawrence, Kan. The following inscription is on the face of the Dedicated to the memory of the one hundred and fifty citizens who, defenseless, fell victims to the inhuman ferocity of border guerillas, led by the infamous Quantrell in his raid upon Lawrence, August 21st, 1863.

Marr &amp; Gordon shipped last month the largest spire monu-

**F. A. Heister,**  
STATUARY.

Modeling and Carving

—FOR—

MONUMENTS and ♦♦

BUILDINGS.

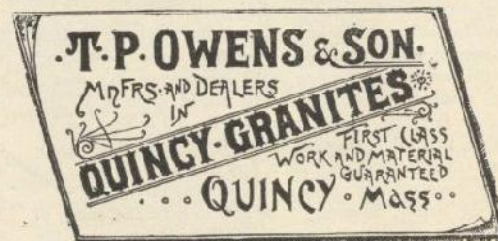
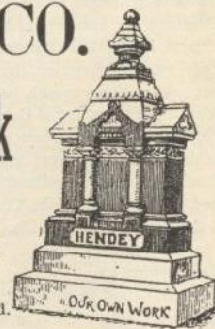
9 Favor St., Rochester, N. Y.

**EWEN & CO.**

MANUFACTURERS OF

**Monumental Work**FROM RED, WHITE AND BLUE  
WESTERLY GRANITE and  
BARRE and QUINCY GRANITE

Works, Westerly, R. I.

Orders solicited and promptly executed.  
The trade only supplied.

**THE MILFORD GRANITE CO.**  
MILFORD, N. H.

MANUFACTURERS OF THE

Highest Grade of MONUMENTAL Granite Work.

SELLS EVERY TIME.

The Beauty of the Milford Granite and our very high class of work is attracting the attention of every one interested in fine Monumental work.

OUR OWN QUARRIES.

With **Three Quarries**, all yielding the finest Granite, we are able to quote low prices on finished work or rough stock. Send for estimates to

THE MILFORD GRANITE CO., MILFORD N. H.

Peter Hamilton, President. Robert Briessen, Sec'y & Treas.

**Guilford & Waltersville Granite Co.**

1416 N. Charles St., Baltimore, Md.

Producers of.....

**WOODSTOCK, MARYLAND, GRANITE.**

Fine Monumental Work a Specialty.

Rough Stock for the trade. Prompt delivery guaranteed.

Prices on application.



**Walker AND Glyssen**

Manufacturers of  
**BARRE GRANITE,**  
Monuments and General  
**Cemetery Work.**

We will furnish  
**GOOD WORK**  
— and —  
**GOOD STOCK**  
At Reasonable Prices. Barre, Vt.

Mention Monumental News when writing to advertisers.



**PETERSBURG GRANITE QUARRYING CO.**

PETERSBURG GRANITE CO.

PETERSBURG, VA.

SPECIAL SIZES NOW UNDER DERRICKS READY FOR SHIPMENT. PLATFORMS—23-0 X 7-0 X 0-8;  
17-0 X 17-0 X 0-8; 20-0 X 6-0 X 0-8; 12-0 X 7-0 X 0-8.  
MONUMENTAL STOCK 22-0 X 4-0 X 4-0; 18-0 X 4-0 X 2-0 etc. We can furnish ANY SIZE,  
Rough, Cut or Polished at shortest notice.

The Only Genuine  
**MILLSTONE, CONN., GRANITE.**  
Quarries Opened in 1830.

HENRY GARDINER, Sole proprietor of the

**Millstone Granite Quarries**

Successors to the  
**MILLSTONE GRANITE CO.**  
Firm of Booth Bros., Etc.,  
at Millstone.

All kinds of finished Monumental work. Rough Stock a specialty. The certificate of award at the Centennial Exhibition of 1876 on the Millstone Blue Granite, for the good color of the stone, its fine, close grain, and good polish, and the marked contrast between the polished and dressed surfaces; a character which gives unusual distinctness in ornamentation, makes it especially adapted to fine cemetery work.

P. O. Address,—MILLSTONE, CONN. Telegraph and Telephone, NEW LONDON, CONN.

**CHAS. F. STOLL**

SOLE PRODUCER OF THE CELEBRATED

**GROTON GRANITE**

For the trade in the Rough, adapted for fine

MONUMENTAL AND STATUARY WORK. P. O. Address,

NEW LONDON, CONN.

**A. D. Harrison,**

Manufacturer of the Celebrated

**DARK BLUE CONCORD GRANITE.**

Estimates furnished on  
BARRE GRANITE.

Monuments and General Cemetery Work.

Correspondence and orders will receive prompt and satisfactory attention.

CONCORD, N. H.



**VERMONT GRANITE CO.,** (INCORPORATED)  
 Quarriers of the Celebrated **BARRE GRANITE**  
 Manufacturers of Monumental and all kinds of Cemetery Work for the Trade.  
 Special attention given to Squaring and Polishing Dies, Caps, Bases etc., and shipping Unfinished Dimension Granite in the Rough a Specialty.  
 All Branches of the Work are Done in Our Own Shops.  
**BARRE, VT.**

**JOSS BROTHERS,** ESTABLISHED 1882.  
 No Cheap Goods, but Good Goods Cheap.  
 C. S. HAMMACK, Sec'y.  
**Manufacturers and Importers of all the best grades of**  
**DOMESTIC AND FOREIGN GRANITES.**  
**ONLY ONE OFFICE**  
**10 and 12 GARFIELD ST. QUINCY, MASS., U. S. A.**

ment ever manufactured in Barre. The bottom base was four-teen feet square, spire forty-six feet three inches in height; total height 63 feet 3 inches. This monument will be erected at Rose Hill cemetery, Chicago.

C. E. Tayntor, of New York, was in town a few days ago looking over the large interests of his firm. We understand they are at work on several heavy orders.

We think we have written sufficient to show that Barre has no occasion to put on mourning on account of not having a fair share of the monumental trade of the country, or because of a discouraging outlook for the future. E. M. T.

*From our regular correspondent.*

**Baltimore, Md.**

One of the handsomest family vaults to be erected in this city is the d' Utassy mausoleum. The design is that of a Greek temple. Dimensions, 20' x 15' and 16' in height. It is to be of Vermont granite, with four polished columns on the portico, and bronze door with a stained glass panel. The interior is to be of Italian marble. The contractor is Wm. A. Gault, Baltimore, and the cost \$10,000.

The new Irish-American Club has taken action in refer-ence to an Emmet monument in Druid Hill park. It is propos-ed to collect subscriptions from patriotic Irish and Irish-Ameri-cans.

The Commission of the new Court House to be erected in this city, have decided to build it of granite and marble. Wood-stock, Quincy, Westham, Hurricane Island or Mt. Airey granite for the basement and sub-basement, and the upper portion of Lee, Tuckahoe or Beaver Dam marbles. The interior is to be of Italian and Tennessee marbles and the roof of copper. Bids are called for July 8th 1895. Hugh Sisson and John Sisson, sons of the late Hugh Sisson, and successors of the business of H. Sisson & Sons, will soon begin building the monument to their late father. It is to be of Maryland marble. A stone quarried for this monument measured 28' 0" in length, 4' 6" x 4' 6" at one end and 3' 6" x 3' 6" at the smaller end. This stone weighed in the rough over fifty tons, and when finished will weigh about twenty tons. The stone is to be worked into a plain shaft, 28' in length tapering to a 2' 6" apex, and resting on a limestone base. The idea was that of the late Hugh Sisson and his sons have carried it out.

A fair amount of building and other stone work is going on. A great many monuments are being completed by the various marble and granite yards, and the prospects are more hopeful

H. C. T.

◀ **GEORGE & ROGERS,** ▶

—Manufacturers of—

**BARRE GRANITE**

Monuments . . .

and General

Cemetery Work.

From best LIGHT and DARK stock.

**BARRE, VT.**

WE WILL TRY TO PLEASE YOU. \*\* GIVE US A TRIAL.



**HOFFER & CORTI,**  
 SCULPTORS.  
**Artistic Carving**

and General Cemetery Work.

**BEST GRANITES**

in the market.

**BARRE, - VERMONT.**



**DILLON & HALEY,**

Manufacturers of

. . . **BARRE GRANITE**

Monuments and

General Cemetery

WORK.

BARRE STREET, MONTPELIER, VT.



Estimates cheerfully given. Correspondence Solicited.



The Ryegate Granite Works Company, So. Ryegate, Vt., have contracts for four large mausoleums and are getting out the columns and pilasters for the new Lafayette Square Opera House, at Washington, D. C. They are making a specialty of this class of work and are well prepared to handle it advantageously. They report good prospects for business throughout the season.

Cook & Watkins of Boston, Mass., have the contract for a large mausoleum to be constructed of Concord granite at Washington, D. C. It will contain about twenty-five car loads of granite.

John Dickie

**ENTERPRISE GRANITE CO.**  
Manufacturers of Light and Dark Barre Granite Monuments.  
BARRE, VT.

**BURLEY & CALDER,**  
.....MANUFACTURERS OF.....  
**BARRE GRANITE MONUMENTS**  
AND  
**GENERAL CEMETERY WORK.**  
BARRE, VT. ALL ORDERS PROMPTLY FILLED. A TRIAL SOLICITED.



**F. BARNICOAT.**  
**GRANITE AND STATUARY.**

QUINCY, WESTERLY, SOUHEGAN, MILLSTONE POINT  
GRANITE MONUMENTS. CIRCULAR WORK A SPECIALTY.

PORTRAIT FIGURES & BUSTS  
MODELLING OF EVERY DESCRIPTION  
SOLDIERS & IDEAL FIGURES  
IN GRANITE.  
SEND FOR DESIGN SHEETS OF GRANITE STATUARY.  
QUINCY, Mass.

**West Quincy**  
Monumental Works . . .

**T. F. MANNEX,**  
Mnfr. and Dealer in  
Plain and Ornamental

Granite . . . . .  
. . . . . Monuments

*All Work Guaranteed*  
*Satisfactory*

West Quincy, Mass.



**J. P. CORSKIE,**

Orders Solicited and Promptly Filled.

DEALER IN DARK AND LIGHT

Estimates Furnished on Application.

**BARRE GRANITE MONUMENTS**

Tablets and General Drapery Work. Drapery and Carving a Specialty.

Pneumatic Tools for Lettering and Carving.

BARRE, VT

WILLIAM CALLAHAN, MANUFACTURER OF  
MONUMENTAL WORK  
FROM ALL GRADES OF QUINCY AND OTHER GRANITE  
34 Quincy Avenue, QUINCY, MASS. *Send for Estimates.*

**SPARGO** .....MANUFACTURER OF.....  
MONUMENTS - STATUARY,  
and Cemetery Work of all kinds from **THE Best Quincy**  
And other Eastern Granites.  
Best Stock and Work guaranteed at Lowest Prices. **W. T. SPARGO, So. Quincy, Mass.**

**ADIE & MITCHELL,** MANUFACTURERS  
OF ALL KINDS OF  
BARRE GRANITE MONUMENTS AND CEMETERY WORK.  
GET OUR PRICES. BARRE, VT.

**HOPKINS & HUNTINGTON**  
Manufacturers of Barre Granite Monuments and General Cemetery Work.  
FIRST-CLASS WORK GUARANTEED.  
WRITE FOR PRICES. Barre, Vt.

**I. A. ARCHE & CO.**  
Manufacturers of  
**MONUMENTAL WORK**  
of all kinds. *Satisfaction Guaranteed.*  
.... BARRE, VT.

**Maine Granite Quarry,**  
Fredericktown, Madison Co., Missouri, solicits your orders. Color: Light Pink, suitable for bases for either gray or red granite monuments. Quarry opened July 1, 1894.

**Granite Polishing**  
For the Trade at the following prices: From the rough (to cut and polish) \$1.20 per superficial foot. From the point, 80 cts. per superficial foot. Extra charges on surfaces less than 5 square feet. **JOHN KLAR,**  
Westfield, Mass.

### Trade Changes, Etc.

**New Firms.**—F. M. Williams & Co. are new dealers at Columbus Grove, O.

Eckert & Son succeed C. F. Patterson at Conncant, O.

A. J. Tibbetts has lately opened a shop at Downsville, Wis.

Henry E. Kattman recently commenced business at Crothersville, Ind.

H. W. Adrian has purchased the granite business of R. E. Turner & Co. at Quincy, Mass.

Byrne Bros. succeed J. T. Byrne at St. Charles, Minn.

English Bros. succeed the firm of English, Reed & Wisdom at Moberly, Mo.

Charles Smith succeeds Holmes and Smith at Augusta, Ky.

J. H. Fleming, Henderson, Ky., has admitted his son as a partner. The firm will be known as J. H. Fleming & Son.

Nicholas Mischel succeeds Mischel Bros. at Owensboro, Ky.

Meyers & Hay have recently commenced business at Hagerstown, Md.

George Craig continues the business at Galesburg, Ill., lately known as Craig & Davis.

E. B. & R. C. Kayler succeed Chas. H. Kayler, at Naperville, Ill.

The shop of R. A. Hosey, Talequa, I. T., has been damaged by fire.

W. N. Worrell is a new dealer at Salem, Ind.

John Jessen, Santa Ana, Calif., is insolvent.

Geo. E. Miller has recently opened a shop at St. Louis, Mich.

D. H. Leese has removed from Reading to Wernersville, Berks Co., Pa.

E. T. Jones & Co. succeed E. D. Jones at Mankato, Minn.

The Standard Granite Co., St. Cloud, Minn., has been incorporated, capital \$25,000.

Henry Staffel has removed from Sunapee to Bristol, N. H.

John M. Hamilton succeeds John Hamilton & Son, Batavia, N. Y.

W. D. Crane is a new dealer at Canistota, N. Y.

Knopp & Cady have recently commenced business at Oneida, N. Y.

Albert Cone has started a marble shop at Nethersfield Springs, N. Y.

Peck Allen Marble and Granite Works is a new concern at Cuba, N. Y.

A new dealer at Chilo, Ohio, is Geo. A. Hecht.

E. C. Brunner succeeds Brunner & Renkel, Cleveland, Ohio.

C. F. Albright has opened a shop at Baltimore, Ohio.

Wm. H. Robey is a new dealer at Mount Ephraim, Ohio.

J. W. Cartmell succeeds the firm of Robinson & Cartmell at Marysville, O.

Clark Ellis and Fred C. Clark will carry on the business of the late Robert Clark at Plymouth, Mass., under the firm name of Ellis & Clark.

Moody & Son succeed Moody & Webster at Union City, Tenn.

Mills & Strachan succeed J. Mills, Hoboken, N. J.

Thos. Manson, Red Bank, N. J., has admitted his son to partnership. The firm will be known as Thos. Manson & Son.

Jas. P. Upham, President Brandon Ital-

ian Marble Co., Brandon, Vt., is dead.

Harry Knipe will start a new marble yard at Wrightsville, Penn.

P. Martinson & Co. have recently commenced business at Fargo, N. D.

Symonds & Hunt have purchased the stock of C. A. Bartlett at LaCrosse, Wis.

A. A. Martin is a new dealer at Gilroy, Calif.

Edward Welch has established a monumental shop at Terre Haute, Ind.

J. A. Millen has recently started in business at Wyandotte, Mich.

North Bridge Granite works have pur-

### Flower Vases



Reservoir Vase  
Mention this Paper.

Send for illustrated catalogue.



Grave Guard.  
Vault Gates, . . .  
Fountains.

LAWN FURNITURE.



E. T. BARNUM.

Detroit, Mich.

IRON SETTEES

### Wrought Iron Fences,

#### CEMETERY ENTRANCE GATES,

Tubular Fences and Rails, Park Chairs and Settees. Vases, Fire Guards, Vault Doors, Etc.

#### J. E. BOLLES & CO.,

Designers and Mfr's.,

DETROIT, MICH.



Send for catalogue No. 18.  
Mention this Paper.



### Troup & Allan.

Manufacturers of

. . . Barre Granite.

Monuments and General Cemetery Work  
from Best Light and Dark

. . . Stock . . .

Estimates Cheerfully Given.

BARRE, VT.



### JOHN CATTO

Manufacturer of

#### MONUMENTAL WORK

In all kinds of Westerly Granite.

#### ROUGH STOCK

OF ALL SIZES.

Westerly, R. I.

chased the Kilkenny Granite Co's branch yard at Salem, Mass.

D. W. Rapalee has removed from Springfield to Tyndall, S. D.

William and Joseph Keenan have succeeded their father, Wm. Keenan, as proprietor of the marble yards at Babylon, N. Y.

C. A. Davis has removed from Weedsport to Fulton, N. Y.

W. K. Smart is a new dealer at Racine, O.

**Deceased.**—Ezra Sherburne, Gloucester, Mass.

Bernard J. McCaffrey, Hartford, Conn.  
John M. Gessler, Philadelphia.

James Harsha, Circleville, O.

Robert Sim, of Mason & Sim, Richmond, Va.

John C. Owen, Middletown, N. Y.



**Iron Reservoir  
VASES,  
LAWN SETTEES  
AND  
CHAIRS**  
Are Manufactured by

**McDONALD BROS., Columbus, O.**

The largest manufacturers of these goods in the world. We issue a large 40 page illustrated catalogue, which will be sent free on application. Mention MONUMENTAL NEWS.



**Park and  
Cemetery  
ADORNMENTS  
ARTISTIC**  
**Iron Vases**  
WITH RESERVOIRS,  
which are the best for Plants  
**BOUQUET HOLDERS**  
for graves, 25, 25, 30 and 40c  
each.  
**OUR NEW BOUQUET VASES.**  
For Cemetery are just cut.

Metallic Wreaths, Crosses, etc., 50c to \$5 each.

**SETTEES AND CHAIRS,**  
Both all IRON or IRON with WOOD SLATS,  
Path, Avenue, and Keep off the grass Signs.  
Ornamental Fountains and Drinking Fountains

**LAWN MOWERS**—Our new one, "THE HERCULES," far superior and different from all others. **GARDEN HOSE**—We only sell the best grades. Nozzles, hoses, reels, etc.

**JONES PATENT HOSE MENDERS**—No tools or bands required. We send four menders, postage paid, by mail for 25 cts. Send inside diameter of hose. **LAWN SPRINKLERS**—3, 4, 6 and 8 arms, Hub, Globe and Combination. All our own make. Prices to suit.

**FLOWERS AND GARDEN SEEDS** . . . . .  
IN PACKAGES OR BULK.

Wire Rose Bush Trellises, Garden Borders etc.  
Send for our New Illustrated 1895 Catalogue, just out.

**M. D. JONES & CO.**  
368 Washington St. BOSTON, MASS.

**A. ANDERSON & SONS,** Manufacturers of  
and Dealers in  
**LIGHT AND DARK BARRE GRANITE.**  
Cemetery Work of every Description.  
Correspondence with Dealers solicited.  
Do not fail to get our prices.  
**BARRE, VT.**  
A few stock jobs on hand. Write for designs and prices.

**FULLER, FOLEY & CO.**  
**Artistic Memorials**  
WEST QUINCY, MASS.  
GRANITE WORK OF EVERY DESCRIPTION.

**STEPHENS & REID,** Manufacturers of  
and Dealers in **BARRE GRANITE**  
Monuments, Tablets, and Cemetery Work.  
Polishing and Heavy Work a Specialty. **BARRE, VT.**

**Round Pond Granite Co.** Formerly Browne McAllister Co.  
**ROUGH GRANITE** of every Description furnished to the Trade.  
**MONUMENTAL WORK A SPECIALTY.**  
Estimates furnished on application. All orders promptly filled.  
Quarry and Office **ROUND POND, ME.**

**COLUMBIA GRANITE Co.** Manufacturers  
and dealers in **High Grade Fine Monumental Granite**  
From Souhegan, Milford and New Westery Granite. For estimates address,  
**COLUMBIA GRANITE CO., MILFORD, N. H.**

**La Rochelle & Fanny,** Manufacturers of . . .  
Concord, Sunapee Granite, for work of every description.  
Also quarry owners of the finest  
grain **LIGHT AND DARK CONCORD GRANITE.**  
**CONCORD, N. H.**

**J. W. McDONALD & CO.,** Quarriers and Manufacturers of  
**-- Fine Monumental Work --**  
Light and Dark Barre Granite.  
Best of Stock and Workmanship Guaranteed.  
P. O. Lock Box 97. **BARRE, VT.**

**Clarihew & Gray,** . . . . .  
Manufacturers and Dealers in . . . . .  
**BARRE GRANITE.**  
For Monumental and Building work, being fully equipped with cutting and polishing plants and all latest improvements including pneumatic tools. We are able to compete successfully with any in the trade. We invite all dealers desiring first-class work to correspond with us. **BARRE, VT.**

**W. D. KIDDER & CO.,** Manufacturers and Dealers in . . . . .  
**BARRE, VT.**  
We beat no drums, but we cut first-class monumental work at prices that simply say "We are in it." We use both Light and Dark Barre Stock.  
J. W. Kidder.

## Among Our Advertisers.

*Special business notices in this department, 25 cents a line. Readers will confer a favor upon the advertiser and the MONUMENTAL NEWS by mentioning the name of the paper when writing advertisers.*

Northfield, Vt., May, 16th, 1895.

Editor Monumental News:—

Enclosed please find check for \$25.00 on account of advertisement. We have had about all the orders we could handle this spring and must give our advertising in the MONUMENTAL NEWS credit for at least a part of our good trade. We are building several fine monuments for Michigan and New York dealers.

Yours truly, *Davis Brothers.*

"Granite Works" in all that the term implies, defines the modern establishment of Swingle & Falconer at Quincy, Mass. The equipment is thorough for doing a large business and they are doing it. With pneumatic tools, a new polishing mill and a shed full of competent granite cutters it is no wonder they are winning a reputation for prompt service and good work. Let them convince you of what they can do.

People are ordering a second copy of the **Carrara Design Book**, do you want one, price \$5? Address Wirt Leland, Carrara, Italy.

F. C. Willison, Boston, Mass., will have a new book of Artistic Monumental Designs ready for delivery early in June. It will contain sixty or more reproductions in photogravure of monuments, tablets, scrollsetc., embody many new and artistic features. A handsome specimen illustration and a special offer to dealers may be had by addressing Mr. Willison at his Boston or Chicago office.

Our service for foreign granite is of the best. Dealers should get our prices on all of their work. Close figures quoted on Chester granite for monumental purposes. We keep an abundance of this stock near at hand. Swingle & Falconer, Quincy, Mass.

Last year Swingle & Falconer of Quincy, Mass., turned out on an average more than one monument a day. This year with their largely increased facilities they are doing even more. Dealers everywhere are solicited to give this wide awake concern a trial order. Send your design, specify the granite and they will do it promptly.

Have you purchased the Carrara Design Book, the largest collection of designs ever issued to the trade under one cover. It contains 80 finely lithographed pages, 2-0 x 1-7, bound in a flexible cloth cover. For \$5, Wirt Leland of Carrara, Italy, will send you this book by registered mail.

There is no better indication of thrift among the retail dealers than the fact that the monumental designers are being kept busy. Allen Brothers, of Indianapolis, Ind., write that they are doing a good business this season. The design made by them for the Texas Firemen's Monument competition last month and submitted by Jaeggli & Martin of Brenham, Tex., secured the contract.

Charles H. More & Co. have several mausoleums under construction at their Montpelier works. The most important being for a prominent St. Louis, Mo. concern. With their modern and commodious equipment, Messrs. More & Co., are prepared to give the most satisfactory attention to this class of work and invite correspondence with the trade on the subject.

Send a \$5 bill in a registered letter or a New York draft for \$5 to Wirt Leland, Carrara, Italy, and get the **Carrara Design Book** for your spring trade.

Among the many concerns at Barre, Vt., whose efforts have always been to furnish a class of work that would reflect credit upon themselves, their customers, the granite and all concerned in it, probably none stand higher in public estimation than Marr



## J. C. KING,

Manufacturer of all kinds of

**BARRE** ←

→ **GRANITE**

## Monuments, Etc.

Rock Faced Work a Specialty.

CORRESPONDENCE SOLICITED.

**BARRE, VT.**



## Fraser & Broadfoot,

Manufacturers of all kinds of

### MONUMENTAL WORK

... From Best ...

**Light and Dark** —

**... BARRE GRANITE**

Estimates cheerfully given.

**Montpelier, Vt.**



## JONES & GALE.

Manufacturers of  
**Barre  
Granite  
Monuments**

of all kinds, . . . .

Send for Estimates.

**MONTPELIER, VERMONT.**



## RICHARDS & TROWBRIDGE

MONUMENTAL  
DESIGNERS.

DESIGNS ON SILK  
A SPECIALTY.

**QUINCY, MASS.**

Correspondence with the trade solicited.

and Gordon. With such a standing it is not to be wondered at that they are always busy. During the past winter and spring they have kept a large force of men employed and at the present time are working more than seventy stone cutters. The product of their dark quarry is well known to all users of dark Barre granite, while the class of workmanship executed by them is

such to be uniformly satisfactory and such as to win and hold an enviable reputation in the trade.

Business has been very good with us but collections are awfully backward say Richards & Trowbridge, the Quincy monumental designers. Never mind, they'll be better this month.



**Wm. COLE,**

Successor to  
COLE & MARCIASSI,  
Fine Granite  
Monumental Work  
**STATUARY..**  
**...DRAPERY**  
A SPECIALTY.  
BARRE VT

**LYNCH & McMAHON,**



OFFICE  
AND WORKS

MANUFACTURERS OF  
FINE MONUMENTAL WORK  
of every description, the standard  
our specialty. Quarries at Barre  
Dark Barre Granite  
Montpelier, Vt.

**J. H. BISHOP & CO.**

MANUFACTURERS OF

**Granite Monuments.**

Estimates Cheerfully Given.  
Satisfaction Guaranteed.

Lock Box 4, WEST QUINCY, MASS

**OLIVER RACINE**

QUARRY OWNER AND MANUFACTURER OF

**CONCORD GRANITE, MONUMENTS, &c.,**  
Cemetery Work of All Kinds. CONCORD, N. H.

**RED BEACH RED GRANITE**  
**BEAVER LAKE BLACK GRANITE**

We make a specialty of ROUGH STOCK, POLISHED COLUMNS and  
PILASTERS, URNS, VASES, BALUSTERS and SAMPLES.

O. S. TARBOX, Supt.

MAINE RED GRANITE CO., Red Beach, Me.

**BASHAW BROTHERS,**

Manufacturers of

**HARDWICK GRANITE**

Estimates on all classes of  
Monumental Work.  
HARDWICK, VT.

**E. C. FRENCH**

Manufacturer of and Dealer in

**MONUMENTAL WORK**  
of all kinds from the best

Light and Dark Barre Granite.

Lock Box 50. BARRE, VT.

**J. R. THOMSON,** Manfr of  
SOUHEGAN OR NEW WESTERLY  
GRANITE

**MONUMENTAL WORK.**

Estimates Furnished.  
MILFORD, N. H.

**T. A. GREEN,**

Light and Dark Hardwick and Woodbury  
Granite Monuments, Tablets and Gen-  
eral Cemetery Work.

Box 65. HARDWICK, VT.  
You will get my estimates by return of mail.

**Manet Granite Co.**

... Estimates given in all ...

**(New England Granites.)**

**QUINCY & WESTERLY**

—A Specialty.—

Best of Stock and Workmanship Guaranteed.

Send Tracings. ....

So. Quincy, Mass.

**A. BERNASCONI & CO.,** Manufacturers of and Wholesale Dealers in

**GRANITES AND ITALIAN MARBLE.**

Barre, Quincy, Concord, Hardwick, Ryegate, Calais, Red Swede,  
Red Scotch, Italian Statuary, Granite Statuary.

Artistic Carving and Modeling  
Monuments and Cemetery Work.

\* WEST BERLIN, VT.



**EXECUTED**  
**DESIGNS . . . .**

--- of ---  
**MONUMENTS**

--- to ---  
ORDER.

**Allen Bros.,**

Special Designs a Specialty,  
on any material  
desired.

Indianapolis, - Ind.

49 Thorpe Bldg.



Designs submitted for all forms of Mausoleum work, Figure window, Ornamental, Symbolical or heraldic. Correspondence solicited. Send for hand book.

**J. & R. LAMB**  
New York City.

SCHOOLS AND MASTERS OF SCULPTURE.  
By A. G. Radcliffe. New York, D. Appleton & Co.

Examining this interesting work before reading its preface, the striking thought in connection with it was, that it would form an exciting incentive to further research on the lines of sculptural art. That the author should make the same point in his preface as an argument for its *raison d'être*, confirms the impression of its usefulness. It would be impossible in the limit of a volume of some 600 pages, to more than touch upon the salient points of the history of the several schools of sculpture, yet alone discuss the questions involved, and harmonize them with the results of continual discovery and research. But the work is full of suggestive pointers, as well as of facts and descriptive matter, that to take up the book means continued interest to the end. Some thirty-five illustrations assist in displaying the prominent features of the several schools, and a fairly good index and biography of sculpture closes the work.

"ABOUT MEMORIALS." The New England Monument Co., of New York City, has issued a very attractive and profusely illustrated brochure under the above caption. It is a classification of the usual forms of monumental tributes, with illustrative examples and practical suggestions as to size, design and material. A fund of interesting and suggestive matter is contained in this handsome little work. A list of references to work executed in private and public interests is appended and concludes the pamphlet.

GOODENOUGH & . . .



SWASEY

Manufacturers  
of . . .

Light and Dark

BARRE  
GRANITE  
MONUMENTS  
and General  
CEMETERY  
WORK. . . .

MONTPELIER, VT.

Correspondence Solicited.

**JUST THE PAPER** ❁  
YOU WANT  
**BUSINESS LAW**  
FOR ALL STATES ❁ ❁  
IT COVERS EVERY SUBJECT  
of General Interest in a Plain, Practical Way, and  
has a Department of Questions and Answers.  
**THREE MONTHS 25 CENTS**  
ADDRESS BUSINESS LAW  
1021 Opera House Bldg., Chicago, Ill.  
"Ignorance of the Law excuses no one."

# ROBINS BROS.,

Manufacturers of Barre Granite Monuments and  
General Cemetery Work from the Best Light and Dark Stock.  
Barre, Vermont.

## ERNEST LeBLOND,

Manufacturer and Dealer in **BARRE MONUMENTS** and GENERAL  
CEMETERY WORK. *Best* POLISHING A SPECIALTY.  
Good Work Guaranteed. Works run by Water Power. Write for Prices. **EAST BARRE, VT.**

## GEORGE STRAITON,

MANUFACTURER  
AND DEALER IN

Barre Granite Monuments, Tablets and Cemetery Work.

BARRE, VT.

## CABLE & EDWARDS

.....MANUFACTURERS AND DEALERS IN BEST.....

**BARRE GRANITE MONUMENTS**  
AND OTHER CEMETERY WORK.

WRITE FOR PRICES.

BARRE, VT.

## T. J. Kelleher & Co.

MANUFACTURERS AND QUARRIERS.

Best Light and Dark Barre a Specialty. We do our own  
polishing, etc. **Montpelier, Vt.**

## JAMES FRASER & SON

MANUFACTURERS  
OF.....

Barre Granite Monuments and General Cemetery Work.

Correspondence Solicited. Give us a trial.

**BARRE, VERMONT.**

## F. B. MARTIN,

Manufacturer of all kinds of  
Monumental and Cemetery  
work from . . . . .

**Light and Dark Barre Granite**

Barre, Vermont.

## CABLE & WALKER,

Manufacturers of and Dealers in LIGHT and DARK

## BARRE GRANITE

Monuments, Tablets and General Cemetery Work.

Fine Draped Work a Specialty.

.... **BARRE, VT.**

## KINGSTON BROS. & CO.,

Manufacturers of  
and Dealers in

**LIGHT AND DARK BARRE GRANITE.**

Cemetery Work of every description.

Correspondence with Dealers solicited.

Do not fail to get our prices.

**BARRE VT.**

ALWAYS MENTION THE MONUMENTAL NEWS

# JOHN SWENSON,

SOLE PRODUCER OF THE CELEBRATED

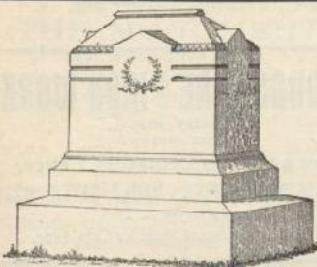
## DARK BLUE CONCORD GRANITE

For Statues and Fine Work it has no Superior.

Also Manufacturer of Fine Hammered and Rock-Faced Monuments, Mausoleums, Tombs, Coping, etc.

Correspondence Solicited.

WEST CONCORD, N.H.



**LESLIE B. HENDERSON,**  
(Successor to)

**HENDERSON & DICKIE.**

Manufacturers and Dealers in Light and Dark  
**Barre Granite Monuments,**  
*Tablets and General Cemetery Work.*  
Draught and Carving done in an Artistic manner.  
BARRE, VT.

— C. —

# Bizzozero

& CO.

Manufacturers of all kinds of Monumental  
Work from Light and Dark **Barre Granite**  
BARRE, VT.

**JOHN BENZIE,** Manufacturer and  
... Dealer in the best

LIGHT and DARK **BARRE GRANITE MONUMENTS,**

AND GENERAL CEMETERY WORK.

Quarrier's Pneumatic Tools. \* **BARRE, VT.**  
Estimates Cheerfully Given.

**Field & Wild,** QUARRYMEN,  
Dark Blue Quincy Granite

**Rough Stock, Monumental and Cemetery Work.**

The Superior Qualities of our granite have long been recognized by the trade. **QUINCY, MASS**

MONUMENTS FROM THE FAMOUS HARDWICK STOCK.

Should be ordered direct from

**FRANKLIN HARDWICK & SONS.**

— DEALERS IN —

ROUGH, HAMMERED AND POLISHED GRANITE.  
**QUINCY, MASS.**

**McINTOSH AND SON,**

Manufacturers of all kinds of

**MONUMENTAL WORK.**

From all Grades of Quincy and other Granites.

Estimates Cheerfully Given. Columbia St., S. Quincy, Mass.

**Jas. K. Milne & Co.**

Manufacturers of **Barre Granite Monu-**  
**ments** and Cemetery Work.

BARRE, VT.

**P. B. Fraser & Co.**

Manufacturers of Light and Dark  
**Barre Granite Monuments** and Gen-  
eral Cemetery Work.

BARRE, VT.

**W. T. Kenerson & Co.**

Manufacturers of **Barre Granite Monu-**  
**ments** and Cemetery Work.

BARRE, VT.

A monument is proposed in memory of Stephen C. Foster, author of so many of the standard negro melodies.

The Lyons Granite Co. has added another large cutting lathe to its plant. This one is of American manufacture and works highly satisfactory. There is still a great run on column and polished ball jobs and this concern is handling by far the majority of the work in this line.

Mr. James Duncan of Baltimore the general secretary of the Granite Cutters Union was in Quincy for a short visit last month. Mr. Duncan favorably impressed both the workmen and manufacturers and he is looked upon as a conscientious and cautious leader.

# CANNON BROTHERS,

Manufacturers of all kinds of

**BARRE GRANITE . . . .**

**MONUMENTAL WORK.**

Correspondence Solicited.

. . . . NORTHFIELD, VERMONT.

Mr. John Dickie, formerly of the firm of Henderson & Dickie, but now a member of the Enterprise Granite Co., reports that their firm has shipped a large number of medium sized monuments this spring. Mr. Dickie is well and favorably known to the granite trade.

Cross Brothers of Northfield, Vt., sustained a severe loss by fire at their works on the night of April 28th, their power house being destroyed and much damage done to the machinery. The fire was checked before getting hold of the polishing mill to any extent, which with their stone sheds and unfinished work in the yard were unharmed. The loss of power crippled their shipping facilities, and the firm wishes to extend sincere thanks to their customers through the columns of MONUMENTAL NEWS for their patience and to assure them that they are doing all in their power to get business in shape again, and will give the best attention to their orders possible. Their works will be considerably improved in the refitting.

### Business Chances, For Sale, Etc.

Advertisements inserted in this column to cents a line each insertion; six words to a line. Copy should be received not later than the 10th.

#### FOR SALE.

TWO screw-feed gang-saws with boiler-iron tank, two stone cars, railroad tracks, saw punch, etc., all complete for \$150.00, just as they stand here. Inspection invited. This is a bargain. Pitkin's Stone Works, 170 West Main St., Rochester, N. Y.

A first-class granite and marble business for sale. Stock from \$1,300 to \$1,500. Will take part cash and give time on balance; will give a bargain to right parties. Population 13000. Have had a good paying business out of which I have built a brick block and bought a fruit farm. Reasons for selling, poor health and I wish to try another climate. For particulars, address No. 2 care MONUMENTAL NEWS, Chicago, Ill.

FOR SALE Marble and granite business. Established 34 years in city of about 7,000 inhabitants. Splendid business opening. To be sold because of death of former proprietor; address, J. W. Harsha, Circleville, Ohio.

### Wanted Situations or Help.

There will be a charge of 25c. for every advertisement in this department when replies are addressed in care of the MONUMENTAL NEWS. Advertisements will be inserted FREE only when replies are addressed direct to the advertiser.

WANTED—Several pushing marble and granite salesmen for good territory. We manufacture our own work. Address New Duning Marble and Granite Co., 1901-1905 Peach St., Erie, Pa.

WANTED to correspond with a party owning a granite quarry, who would be interested in opening a retail branch at Pittsburg, Penn., carrying about \$5,000 worth of finished stock; advertiser is a practical workman, years of experience as a salesman, good business qualifications; references A. I.; address C. A. W., care of the MONUMENTAL NEWS.

WANTED—Position by first-class marble and granite letterer. Can polish both marble and granite, cut marble fairly well and sharpen tools. Can also set monuments. Address lock box #71, Warren, Ohio.

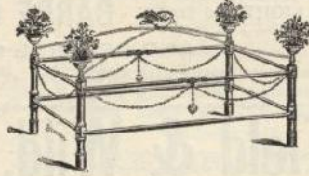
GRANITE WORKER of 20 years experience, has lettered most of that time, wants steady job. Makes working drawings and designs monograms. Can letter marble. Formerly a marble mason, and monumental workman. Age in fifties. Would like to sell work, address A. P. O. box 769, Barre, Vt.

## WHAT'S ALL RIGHT? OUR HAND DESIGNS

of any class of work. Furnished promptly, at reasonable prices. Silk Designs a specialty. Correspondence with the trade solicited.

### WHITEHEAD & RIEKERS, MONUMENTAL DESIGNERS,

STUDIO:—45 West 24th Street, New York, N. Y.



### SYMONDS WIRE & IRON WORKS

DETROIT, MICH.  
Manufacturers of

Wire and Iron Cemetery Fences  
CHAIRS, SETTEES, VASES, VAULT GATES, GRAVE  
-- GUARDS. --

State your wants and Send for Catalogue.

WANTED—By a practical marble worker a job at lettering, tracing, etc., on marble or granite 20 years experience and good reference, address Letterer, care of MONUMENTAL NEWS.

SITUATION WANTED—By a good general workman, understands all branches of the business, can cut granite. Sober and steady. Wanted a permanent situation. Best of references, address L. care of the MONUMENTAL NEWS.

WANTED—A good steady workman that can letter marble and granite or will take a good workman in as partner who would invest \$20 to \$300. Address Wm. Dawson, Belle Center, Wis.

DESIGNER AND DRAUGHTSMAN—Who has a practical knowledge of the stone business and designing, also uses the air brush, wishes employment. Reference given, address box 208, Barre, Vt.

WANTED—An experienced salesman. One who thoroughly understands the wholesale, foreign and American granite business, to cover the western territory. Address with reference and experience Wolf & Co., Mansfield, O.

WANTED—By a young man, a place to finish marble cutting trade. Eastern Michigan or western Ontario preferred. Have had two and a half year's experience and can give references; address, W. J. N., Box 4, Downingtown P. O., Sarnia Co., Mich.

SITUATION WANTED—General workman, permanent job more of an object than high wages, strictly sober. E. T. Cushman, Perryville, Mo.

SITUATION WANTED—By general man on marble and granite, can cut letter and set, can also do interior work; address C. A. H., 231 Augusta St., Chicago, Ill.

WANTED—Marble cutter, also tracer! Good wages and steady work. Only sober and industrious men wanted. Married men preferred. The Blue Ridge Marble Co., Nelson, Ga.

WANTED—Position as general workman. Can letter granite or do anything required of the trade. Can also sell work on the road. Have had 25 years experience. Will work reasonable if job is steady the year round. Am married man with family. Can speak German, and am sober; address B. 32 So. Main St., Oneonta, N. Y.

A. J. YOUNG  
MANUFACTURER OF  
General - Monumental - Work  
From Best Light and Dark  
BARRE - GRANITE  
EAST BARRE, VT.

WANTED—Draughtsman, in eastern Pennsylvania. One capable of making air brush designs, a good position for a good man; address No. 300 care of MONUMENTAL NEWS.

POSITION WANTED—By an experienced marble and granite workman and salesman, who understands every branch from quarry to cemetery. Can estimate accurately in both marble and granite. Have spent many years on road and am now on road for a large granite company but want to make a change. Competent to take full charge of a branch house or a retail business. Would take a working interest in first-class business in good locality; address B. care of MONUMENTAL NEWS.

Will the advertiser having an advertisement in this issue signed R. please send his correct address.

WANTED—By a lending and well established eastern firm, a first class retail salesman, who can come well recommended. A good salary and permanent position for the right man; address, Permanent, care of NEWS Office.