

THE MONUMENTAL NEWS

AN ILLUSTRATED MONTHLY MONUMENTAL
ART JOURNAL.

R. J. HAIGHT, EDITOR AND PUBLISHER.

SUBSCRIPTION:
REGULAR EDITION in United States and Canada \$1.00 a year; Foreign, \$1.00.
INTERNATIONAL EDITION, \$2.50; Foreign, \$3.00.

Address all Communications and Remittances to
THE MONUMENTAL NEWS,
384 DEARBORN ST., CHICAGO.

Entered at the Chicago P. O. as Second-Class Matter.

VOL. 7. CHICAGO, DECEMBER, 1895. NO. 12.

♦ CONTENTS. ♦

Editorial—Eighth Anniversary Number—Commemorative Tablets—Retrospective—Lincoln Monument—Spring- field, Ill.—Art School Education—Public Statuary.....	737
Coloring Bronze—"Beautiful Statuary".....	739
*The Mechanics Fair Sculptures.....	740
*Emil Augier Monument by Duchess of d'Uzes.....	742
*Walnut Hills Cemetery, Brookline, Mass.....	744
*Sculptured Monuments of Philadelphia, II.....	746
Sculpture.....	748
Foreign Notes.....	750
Monumental Notes.....	751
Our Illustrations—Proposed Monuments.....	752
Church Decorations—Australian Marble.....	754
Cemetery Notes—Recent Legal Decisions.....	756
Correspondence—*Trade Notes.....	758
*Barre Letter.....	760
Quincy Letter.....	764
The Business Paper.....	766
Photographs, Trade Literature, etc.....	768
Trade Among Advertisers.....	770
Advertising Pointers—Publishers Department.....	774
Trade Changes, etc.....	782

OUR advertising patrons are reminded of the forthcoming Eighth Anniversary number of the MONUMENTAL NEWS to be issued on January 1st. In accordance with our established custom it is our aim to have a copy of this issue reach every individual identified with the monumental industry in the United States, and the occasion is therefore one of especial importance to advertisers. Our January circulation will be very much larger than ever before.

IN another column is recorded the placing of a bronze tablet to commemorate the introduction of civil government in St. Louis, Mo., by the Wednesday Club, a woman's organization of that city. Considerable interest has been manifested in some of the eastern states in this direction, and it is creditable to St. Louis to have followed suit. The establishment and emphasizing of historical data is

a sign of the times, and it is a part of wisdom to make certain and then seal, perhaps, in the way indicated, valuable facts connected with local history; for the advantages of such a course in an educational way need no endorsement, and the progress of the country is determined by such authentic data as may be wisely established and permanently recorded for future use and experience.

THIS issue closes the seventh volume the THE MONUMENTAL NEWS and a retrospective glance or two should not be amiss at this time. The passing year has witnessed the production of an unusual amount of heavy monumental work and there has also been a decided increase in the demand for mausoleums. The most costly of this class of memorial tomb completed during the year, is that of C. P. Huntington in Woodlawn cemetery, New York, which was erected at a cost of \$250,000. Another notable feature of the year, intimately connected with the monumental trade, was the dedication of the Chickamauga and Chattanooga National Military Park. One must think well to realize what this great public enterprise means both to the present and future. It is the greatest military object lesson in the world today and it will gather renewed interest as it progresses year by year to completion. Turning from material business to the conditions affecting it, the results of competition claim a word. Competition—a factor that should not enter into a business so closely related to art—has, however, forced prices on the average class of monumental work down to a point never before known. Happily, it has not been felt so seriously on the higher grades of work, mainly because of the dignified position taken and upheld by contractors for such business. As in most other lines of business "poor collections," has had its depressing effect on this, but there has been a gradual improvement for some time past. "Take it for all in all," the year has unquestionably been a good one, and there are, moreover, ample reasons for the belief that the forthcoming year will be even better.

MANY reports are current concerning the Lincoln monument at Springfield, Ill., which in 1874 was completed at a cost of \$206,500. That it is sadly in need of repairs is undoubted, and that were it to be built today, similar construc-

tion would not be considered is also true; but the granite has been called into question as having decayed and been dropping off, which creates a wrong impression. The granite is perfectly good, but the monument is a brick monument veneered with granite slabs, and time and change have caused some loosening in parts, which may always be looked for in such a construction. The workmanship was probably defective from the start, and if those who had the work in charge—agents of the State—did not exercise proper care and judgment, the State should make good their mistakes. It is unfortunate that the monument to the great Emancipator should in so short a time create so much adverse comment, and notwithstanding the great cost of renewal, Abraham Lincoln deserves the most enduring monument it is possible to secure, and the State that claims him should see to it that he gets it.

IN this generation and at this time no more evidence is needed than results already achieved, to prove the value of an art school education to the young men and women who may have resolved to follow monumental art, sculpture or architecture as a life work. The course of study, the thorough methods, the variety of examples, the facilities for developing latent talent, the inducements to invigorate halting ambition, and the fraternal competition in the class room, coupled with the high professional standing of the instructors, and small fees, combine to offer such a field of opportunities that it is no wonder that art, as a life work, is filling the schools with students and creating that atmosphere in our large cities which is so essential to the encouragement and development of a national art. The country may well be congratulated on this increasing desire for art education. There is no higher evidence of the progress of culture in our national life than the development and growth of our art schools. These conditions have been especially pronounced in Chicago. This progressive city is so rapidly developing in art matters, that one can hardly credit the advances made in so few years. Its Art Institute is surely becoming an institution of importance. The number of students attending its school is larger than ever before, and it is believed in point of attendance the largest in the United States.

THE necessity for competent judgment in the selection of monuments for public places and the approval of such as may be donated to the people, was long ago felt in our large cities, even though the art sense of the people had not positively asserted itself. The lack of such judgment is seen to-day in the incongruous specimens of the sculptor's art which have found a resting place,

in far too great numbers, in our public places. Yet the question of whom to select as authority on matters of art of a public nature is one involving so many difficulties, personal and otherwise, that in a general way little has been done in this direction, notwithstanding that every day makes the necessity more apparent. Probably one of the most promising efforts towards a solution of the problem was inaugurated in New York city, where subjects of monumental art and sites for same are referred to the National Sculpture Society, whose headquarters are in that city, and considerable good has been so far accomplished. All has not, however, been smooth sailing, for as the National Sculpture Society does not include all our well-known sculptors in its membership, it is to this extent weak when issuing such decisions as may involve fine questions difficult of a unanimous verdict. Such a result is now before the public on the society's committee's adverse report on the proposed Heine monument which the German citizens of New York have been at work upon to secure for a long time past, and for the purchase of which they had undertaken to raise \$35,000. The MONUMENTAL NEWS has great respect for the National Sculpture Society, but if press reports are correct it is compelled to look upon some of the reasons for rejecting the Heine monument as trivial. However, it may be that, in the endeavor to maintain a high standard of art in the public monuments of New York, the committee found it impossible to accept this example of German design and workmanship for a conspicuous location in America's chief city. It is quite unfortunate at this time when our advocacy of art commissioners in our large cities was finding fruition in many directions, that so much newspaper discussion has been drawn to this case. The Heine monument is the work of a man celebrated in his own country, and one who is credited with having created some notable monuments. It should have been expected that a decision by the National Sculpture Society would carry weight enough to avert hostile criticism from responsible sources, and it will when the people realize that it is strictly controlled by the dictates of true art. To meet with public approval and to merit it, there must be a business-like purging of its public monument committees, so as to assure decisions absolutely free from the slightest taint of personal leanings, faddism, or querulousness on quasi-unimportant details. Decisions must be based on the broad grounds of art and public usefulness, convenience, enlightenment and enjoyment. It will be a calamity, from the point of view of artistic progress, if public opinion seriously opposes the decision of the society, for it will be difficult to reinstate its authority upon art matters in view of a public rebuff,

Bronze Coloring.

There are some interesting points about the different colors of bronze, which vary with the composition of the metal and the atmospheric conditions under which it has been kept. The antique bronzes have all taken on a natural patina or tint, in most cases due particularly to the nature of the soil in which they were buried so long. Sometimes, where the piece has lain in very dry ground, the metallic surface has not changed, and so with bronzes which have been constantly beneath fresh water, as in the beds of some rivers or in peat bogs, while in other cases it has undergone more or less oxidation. This would be so especially where the bronze has been in damp soil, or near iron, or under salt water. From ancient times it has been more or less a practice to impart an artificial coloring to the metal by the application of various mixtures, called "pickles," and other processes, and different methods have also been employed in later days to imitate the natural patina of old bronze. The Chinese and Japanese are especially skilled in imparting beautiful and varied colors to the surface of their bronzes. Of Silanion of Athens, we are told that in his figure of the dying Jocasta, he added silver to the bronze in order better to give the pallor of death; and a Rhodian sculptor named Aristonidas, made a statue of the repentant Athamas, a hero who destroyed his own son while insane, to which he added iron to express in the bronze the blush of shame at his mad act, on the return of reason.

An objectionable black surface results on bronze in the composition of which much zinc has been used. It is stated that Rouch's Frederick the Great is covered from this cause with a disfiguring black, which, whenever cleaned away, carries with it the finer details. A somewhat similar effect, though from a different reason, one highly flattering to the sculptor, if we may trust Pausanias, was seen on a statue of Mercury at Athens, whose high merit was such that it became thoroughly black from the continual moulds taken by later artists. Bronze weapons, ornaments, drapery, and other objects were not infrequently attached to marble statues by the ancient sculptors, as shown by the holes and other indications left in the sculptures of the Parthenon and of the temple of Minerva at Aegina, among others, and the British Museum preserves the head and shoulders of a colossal marble horse, one from the four-horse chariot which surmounted the great Mausoleum of Halicarnassus, which has still upon it the bronze harness originally placed there B. C. 352, when the structure was erected. The Greeks frequently inlaid their bronzes with precious metals and stones, the eyes often being formed of gems or enamel. Thus a unique little bronze statuette of a

woman or goddess in the British Museum has the eyes formed of diamonds, which make a point of light in the dark silver eyeball. From these instances and others previously quoted, one may gain some idea of the height to which artistic work in bronze was raised. The glorious record of past achievements in imperishable bronze, gathered from history and irrevocably stamped as true by the precious works enshrined in the collections of the world, cannot fail to stimulate the artists of to-day towards the highest endeavor.—*Bronze; Gorham Manufacturing Co.*

"Beautiful Statuary."

Patriotism is the keynote of everything that appears in the columns of *Home and Country*. A recent number contains an article on the subject under the above head, in which a strong appeal is made for more genuine American art. Among other things it says: We have women as fair as any that ever stood as a model for the artist of old, men as grandly endowed as Apollo with the attributes of perfect manhood, and a history rich in all that goes to make women attractive and man worthy to be woman's companion.

America must strike out for herself in sculpture, in painting, in all that goes to constitute the charm and the genius of civilization. Why should we be bound to these misty memories—these Venuses, Ariadnes and Hebes—when we can find Venuses, Ariadnes and Hebes in every American town, and many thousands of them in a city like New York? And this, by the way, suggests that the American woman has not yet been idealized by sculptor or painter. One of our successful weekly newspapers, following the leadership of Thomas Nast, the great cartoonist, represents Columbia as a robust and muscular German female, with a beefy form and a handsome face—like the wife of the keeper of a lager beer saloon; and this ideal is the one generally adopted. Who ever saw an American woman—a real American woman of that type? No; slender form, not too willowy, but very far from robust, limbs small but not attenuated, and a face not only faultless in outline, but lighted with the glow and animated by the magnetism of thought, such is the typical American woman.

* * *

What they (Americans) want in ideal as they have in reality is the genuine American woman, without a peer in Greece or Rome, in Britain or in Germany, and the sculptor who gives us that kind of woman, and calls her what she is, will deserve immortality.

When the Greek put in marble his ideal of female or manly beauty, he took the Grecian form.

The Mechanics' Fair Sculptures.

There are many fine exhibits in the Mechanics' Fair Art Exhibit, now (October 30) being held in Boston, worthy of mention, but the writer chooses those only that are of a public nature and which are likely to be heard from in the sculptural world at an early date.

PAUL REVERE.

Sculptor Robert Kraus, author of several works that possess a keen sense of the ornamental, shows a remarkable heroic bust of Paul Revere. Not only does it look like a man of great mental capacity, sagacious, earnest and commanding, but it comprehends those fine qualities essential to a great work; the anatomical container fully meets the demands of the contained. The head is not like a carved ornament—it is not still life—it rather partakes of the life, the animated quick; it appeals to the spirit; it is changeable in expression, flexible; it is wrought as from the human mould and pulsates; it would almost speak. If this bust were in bronze and exhumed from earth's forgotten treasures, it would be set down by the expert archæologist as the image of a great man from a master's hand. Kraus has modeled his planes and the rounds, his lines and curves, as one might who was endowed with great facility, the face of one he loved. Force, vigor of mind and knowledge is evident in this work; it is full of feeling, dignified even to a refined degree. The draperies quite fit the figure, that is, they belong to the subject and are wearable looking fabrics; no fussy spots are seen, nor harsh, provoking lines; one feels its strength at every view, and above all, one respects the animate clay, so much so that, were it endowed with life, one would bow with admiration to a man with brains and worth. Kraus might well (were he not ambitious for further achievements) rest his laurels on this one splendid work. Efforts will be made, it is understood, to secure the bust and have it cast in bronze, ultimately to be placed over the grand entrance hall of the Mechanics' Fair building in Boston.

PEDIMENT FOR THE NEW STATE HOUSE ANNEX.

The competitive pediment for the New State House Annex is a marvelously earnest and artistic grouping of symbolic figures. Though semi-



PAUL REVERE.—ROBERT KRAUS, SC.

sketchy in modelling, it conveys the most complete feeling to the eye and mind. The composition shows in the center the figure of a woman representing Massachusetts. In her left hand she holds a shield upon which is noted the typical Indian. In her right hand a palm is held, while on her head she wears the crowning cap of liberty and laurels. The full spread wings of the eagle, perched upon the back of the chair of state, in which the figure



COMPETITIVE PEDIMENT, FOR THE NEW STATE-HOUSE,—HUGH CAIRNS, SC.

sits, is significant as a decorative feature as well as a symbol of liberty. There is a fine figure of a Roman soldier on the left, and next to this Justice. The grouping further embraces "Education," showing a woman teaching a youth; "Charity," by a mother and two children, and two figures balancing the composition consisting of Painting and Sculpture. "Architecture" and "Engineering" are noticed in figures at the extreme ends of the pediment, while "Agriculture" and "Commerce" are symbolized with a bull, a young tree, a sheaf of wheat, the horse, boat, etc. At the feet of Massachusetts, incised upon a ribboned tablet, is the motto of the State.

The sculptor, Hugh Cairns, made a specialty of studying European pediments last summer, his visit being entirely devoted to the character and strength of the carrying power of figures at a greater or less height. The water figures add great dignity to the composition, and one important feature is noticeable, i. e., that we shall have an original American pediment unlike any existing. In detail, effect and proportions, all that is desired is here evidenced. All told, the idea is clear, and the grouping strong, yet picture-like, giving one a stirring sense of sculptural force and imaginative qualities.

In all likelihood this model will be secured for the pediment; all things being considered, it would be a wise and intelligent choice and add to the art nature of the present handsome exterior.

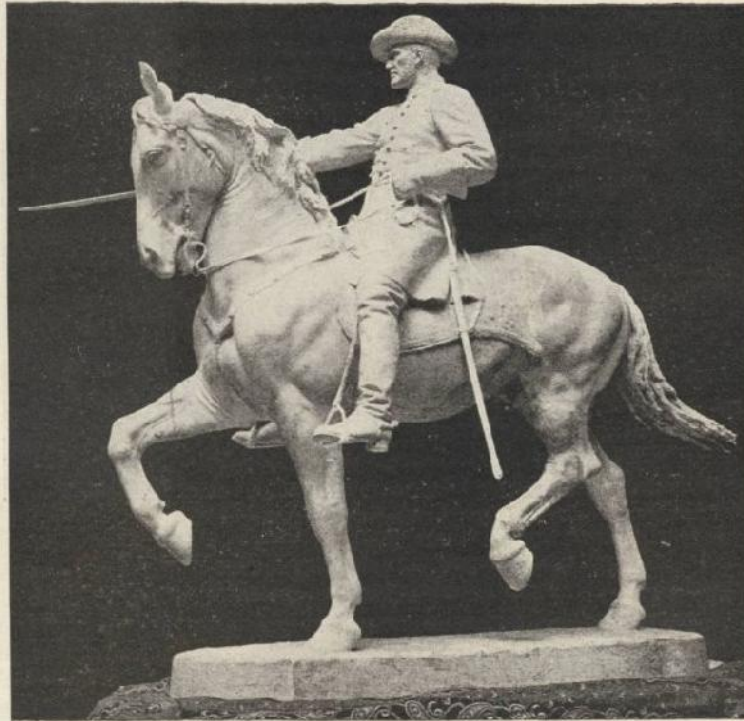
AN EQUESTRIAN SHERMAN.

C. E. Dallin's model for the competitive Equestrian Statue to Gen. Sherman, to be erected in Washington, D. C., by the Society of the Army of the Tennessee, is interesting at all points. To my eye it is the most simple in composition and modeling of any work shown in any competition of late years. It composes well, is effective, without being in the least dramatic, and looks like a soldier on a soldier's horse. What more can be said? The sculptor critic, the horseman, those who run and read, will wonder at its simplicity and feel its weight and the purpose of its creation. There is just enough action evident in the lines to keep in

perfect balance; just enough reserve to make you feel that the author could carry it into the powerful movement of a military action. The possibility of any amount of energy is stored up in this model, and it were better so than to give no mystery whatever.

Surely, the work makes a good picture, and this is no small part of what a sculptor should attain in his grouping or composing.

Mr. Dallin has won severe competition, and to the writer's fancy, he has a winning model in this equestrian.



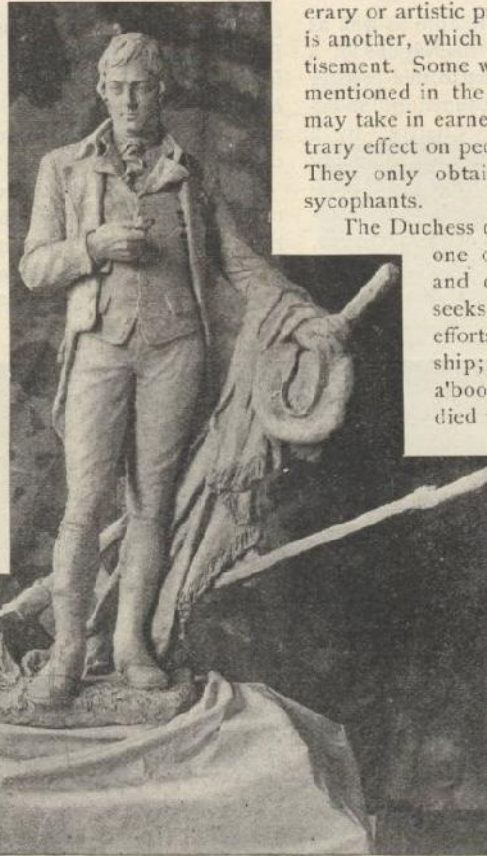
COMPETITIVE EQUESTRIAN STATUE TO GEN. SHERMAN.—C. E. DALLIN, SC.

ROBERT BURNS.

Another work of Mr. Cairns, and one which is attracting attention here in Boston, is his statuette of Robert Burns. Not only is it a fine and altogether happy conception of the people's poet, but it is handled in a manner which awakens interest in the sculptor's perpetual qualities. The composition is simple and quite original, showing the poet in the fields, with one hand resting on the plough-handle, while in the other he holds a field flower, over which he is contemplating.

The sculptor gives us a youthful face and figure—the genius is evident, the poet has already made an impression on the world and will shortly be rec-

ognized in Edinburgh. One would feel that the artist had represented Burns at the age of 22, just before he makes his debut among the great literary lights of his time. You feel his strength of limb and mind, you feel his tenderness of nature. The pose is graceful, thoughtful and earnest, the proportions agreeable in the pictorial, as well as a sculptural sense. The sculptor evidences a keen feeling for his subject, and were he



ROBERT BURNS. HUGH CAIRNS, SC.

to make a heroic bronze of it, it would doubtless gladly be accepted by our art commissioners and become an ornament to the city parks, which need just such embellishments.

Cairns seems to be one of our coming sculptors. He is surely one of the cleverest and most original in composition and imagination. His work on Trinity Church is greatly admired for its spiritual qualities, and he won much merited praise for his World's Fair Parthenon frieze. He is very able with the chisel, and his sketches, be they comic or serious, ideal or architectural, all bear the character of the born sculptor and the refined master workman. He knows his trade, and possesses remarkable artistic traits.

F. T. Robinson.

Emile Augier's Monument by the Duchess d'Uzes.

In every country there are women to whom, unfortunately, comes the thirst for renown after they are married, or at an age in which it seems ridiculous and neglectful to abandon wifely and maternal duties for the sake of making weak efforts at lit-

erary or artistic pursuits. Besides that thirst there is another, which is almost ignoble, that for advertisement. Some women, to have their names daily mentioned in the papers, will do things that they may take in earnest, but which will have the contrary effect on people whose admiration they seek. They only obtain interested compliments from sycophants.

The Duchess d'Uzes is not satisfied with having one of the greatest names of France and one of its greatest fortunes, she seeks notoriety by literary and artistic efforts. She has pretensions to authorship; she has written several plays and a book upon the travels of her son, who died while on an exploring expedition in Africa. Her works in sculpture have been many. Her pseudonym on plaster or marble is "Manuella." She had a Joan of Arc at the Fair of 1889 which was much admired, and if I am not mistaken she has succeeded in placing one of her statues in the Luxembourg Museum.

Curiosity asks how the Duchess d'Uzes finds time to execute so great a number of works in literature and art, for her social duties are multitudinous. Besides her mansion in Paris, she possesses several chateaux, in which she not only entertains continually during the season with all sorts of spectacular shows, but she prides herself on being one of the most intrepid amazons of her country, and in hunting time she is almost daily seen in costume, gun on shoulder wandering in her forests and woods, aiming at all sorts of game. I once asked Madame Rumor how it was that the Duchess d'Uzes found time to do a work in twenty-four hours for which a mortal of ordinary and also extraordinary diligence took forty-eight. You must know that Madame Rumor is as malevolent in France as in America.

"You do not know," answered Madame Rumor, "that the Duchess d'Uzes is very charitable and generous. She is also shrewd; and has the ability of unearthing unknown talents both in literature and sculpture and employing them. I have no doubt, that when she employs and pays young sculptors to do the rough work on her monuments and statues which she afterwards signs, 'Manuella,' it is to bring them out and prepare them to make a name for themselves."

"Well, a woman must have some help to construct an immense monument like that of Augier's. There is much architectural work about it, and I suppose the Duchess d'Uzes does not pretend to be an architect."

"Oh, yes she does, but she has no time to execute her plans. She went to work on the Augier monument only two months before the opening of the Salon, and, naturally, with her many occupations she had not the time to put the first nor the finishing touches on it. Just think, she had only one hour to devote to it a week.

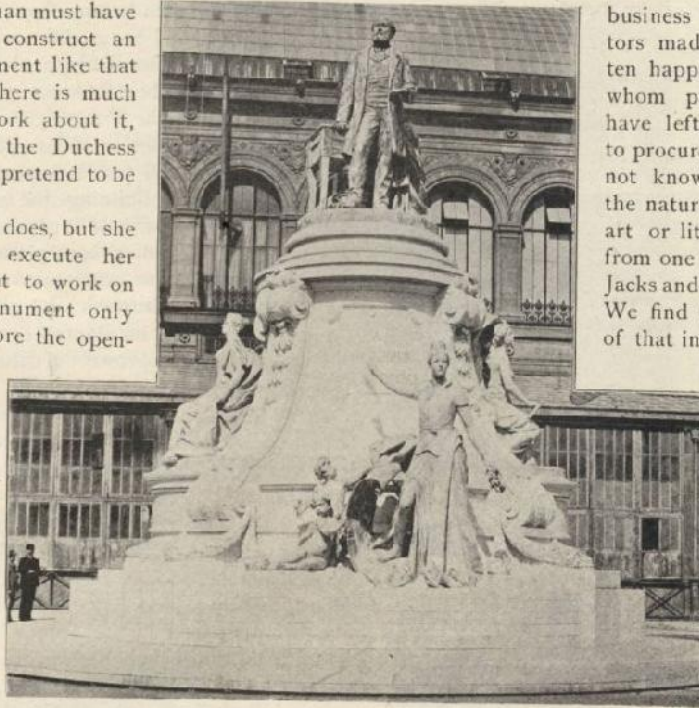
On Friday af-

ternoons, she hurried into the studio, generally with one or two gentlemen and ladies, who waited until she was through with her work to take her to another of her many social and artistic occupations. On these Friday afternoons, she would throw a sculptor's blouse over her elaborate toilet and work here and there with the soft clay, and spend much of the time in criticizing the week's work of seven sculptors and seven painters who were in her employ to complete the monument for the opening of the Salon."

"That was not necessary for like the Vicar of Wakefield's family portraits it was found too large for the enclosure for which it was intended, and it was placed outside of the Palais de l'Industrie."

"That is a very charitable way to put it. The truth is that the jury of admission refused it. One of them told me that they did not wish amateurs to get into the habit of sending their work to the Salon. They were very kind indeed to come to the help of poor artists, to give them employ, but until these artists could send work signed by their own name, the jury was compelled to refuse their work."

The Duchess d'Uzes is a grand daughter of la Veuve Cliquot, of champagne renown. There is, no doubt, that she has inherited the activity for



MONUMENT TO EMIL AUGIER,—DUCHESS D'UZES, SC.

business by which her ancestors made a fortune. It often happens that women, to whom parents in business have left a sufficient fortune to procure an elegant leisure, not knowing how to spend the natural energy, play at art or literature, and flying from one to the other become Jacks and not masters of them. We find numerous examples of that in America.

The Duchess d'Uzes managed to have herself mentioned frequently in the papers during Boulanger's reign of popularity. She gave a million or two of francs to the cause. No doubt, she imagined if Boulanger ever came

to be president or king, she would have an occasion to show her aptitude to dabble in politics. If the Duchess d'Uzes had been born poor, and she had concentrated her energy on one thing, she might have been a proficient specialist of some art, profession or trade.

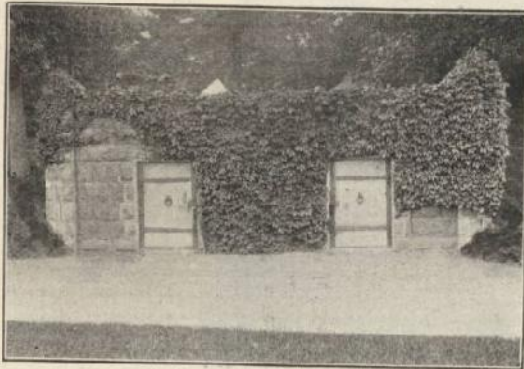
Emil Augier, the renowned French dramatic author, was born in Valence, and the Uzes' monument is intended for that city. It is said that the female figures resemble the sculptor's daughters. The statue is a faithful likeness of the author's pose and countenance. The piece of furniture on which he is leaning is a ridiculous thing for so large and imposing a monument. It looks as if it had been taken out of some lady's boudoir as some stray object taken for Augier's hand to rest upon. It may be the secretary on which the Duchess wrote her works, and with the monument she killed two birds with one stone, immortalized Augier and her secretary.

Emma Bullet.

The report of the Commissioner General of Immigration for the year 1894-5, shows that the total number of sculptors, classified as professional, entering at ports of the United States in 1894-5 was 169, while one entered through Vancouver, making a total from all ports of 170. The total number of stonecutters was 463, which with 4 from Canada makes a total during the year of 467.

Walnut Hills Cemetery, Brookline, Mass.

When one thinks of a town like Brookline, Mass., the richest, considering number of inhabitants, in the world, springing in valuation from \$9,000,000 in 1855 to nearly \$60,000,000 the present year, it would seem as if it were the very place



RECEIVING TOMB.

to look for innovations municipal and so it surely, is. Aside from the many features quite unique in its method of government, it possesses a most remarkable functionary in the Town Clerk, Mr. Benjamin F. Baker, who for upward of forty years has given the world one of the most interesting series of town books, wonderfully written, extant, indeed his perfect system, his inventive, well balanced mind has earned for him the title of "Town Father." It is germane to the subject to speak thus of Mr. Baker for it is to him as much as to any and all others that we are indebted for the Walnut Hills Cemetery, so peculiar in itself and so important as an example of what the burial ground of the future should and must be. It is now twenty-five years since the cemetery was inaugurated and the scheme adopted in its regulation will readily appeal to the ordinary as well as artistic mind and eye.

Right here it is well to insert the rules and regulations concerning lots, tombs, etc., which in several instances will astonish the trustees of cemeteries in general. A board of six trustees, the chairman of the selectmen ex-officio and Mr. Baker as clerk efficiently supervise and carry out the laws which read as follows:

I. No lot shall be enclosed by a wall, fence, coping, hedge or any other boundary whatever; but the limits of each lot shall be marked at each corner by suitable granite posts, and these boundary marks shall be sunk in the ground so that the tops shall be below the surface of the ground. Each lot shall be legibly num-

bered in a manner to be approved by the Trustees.

II. No lot shall be used for any other purpose than as a place of burial for the dead, and no trees within the lot shall be cut down or destroyed without the consent of the Trustees.

III. The proprietors of lots shall not erect any monument, cenotaph, or stone commemorative of the dead without obtaining the approval of such structure by the Board of Trustees at one of their regular meetings, unless such plans shall have been selected from those in possession of and approved by the Board of Trustees, and no flowers, plants, shrubs or trees shall be planted or cultivated in any lot without the approval of the committee on grounds.

IV. The Trustees shall have the right to remove from any lot such trees and shrubs as shall, in their judgment, be detrimental to the adjacent lots or avenues.

V. The Trustees shall have the right to remove from any lot any monument, effigy, cenotaph or other structure, or any inscription, which shall be determined by a majority of the Board to be offensive or improper.

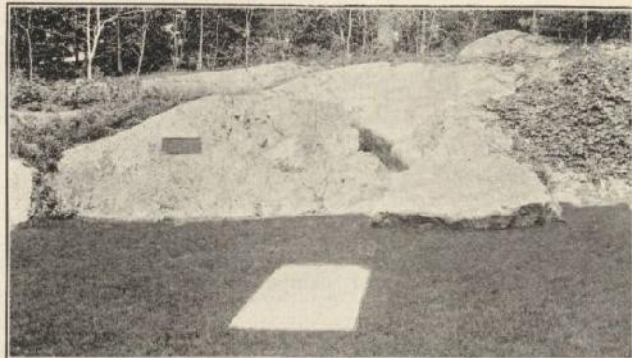
VI. No tomb shall be constructed or allowed within the bounds of the cemetery unless by special permission of the Trustees and only in such places and in such manner as the Trustees shall direct; and no proprietor shall suffer the remains of any person to be deposited within the bounds of his lot for hire.

VII. All lots shall be indivisible.

VIII. All lots when sold shall be trenched, graded, sodded, and prepared by the Superintendent, who shall also provide and set the boundary posts; and all such work shall be paid by the purchaser in addition to the amount paid for the lot.

There follows a note which out to be observed in every cemetery in process of construction.

"No monument or other structure of white mar-



NATURAL ROCK MEMORIAL.

ble shall be erected within the bounds of the Cemetery.

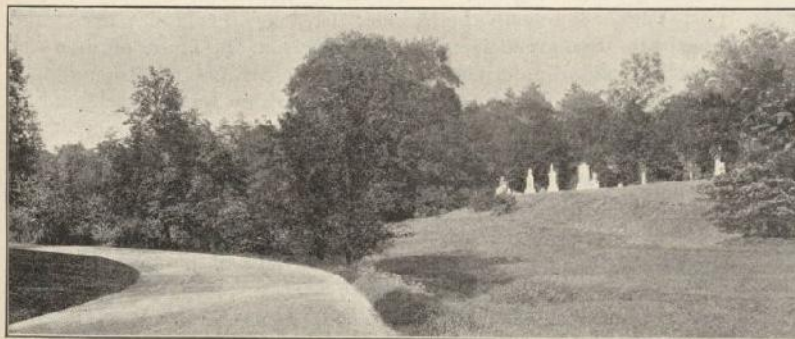
The illustrations quite clearly comprehend the ideas of the landscape engineering and disclose the well kept, broad avenues and paths, an agreeable sylvan aspect of foliage and to the eye of the true gardener a sense of refinement quite befitting a modern cemetery and eminently worthy of emulation.

I have chosen four views in the cemetery which evidence the varied aspects of environment and memorials. The classic Blake monument offers an example with its guardian obelisks and Appine urn and contrasts agreeably with the tablet of copper, which seems so solidly fixed to the everlasting rock. Interesting also is the simplicity of the receiving vault over run with English ivy and nothing could be more beautiful than the sylvan avenue, the natural condition and quiet restfulness of the scene impresses one with a fine feeling for semi-rural beauty, graceful lines and forms, light and shade.

Relative to the sale of lots it is stipulated that the price shall be for any and every foot twenty-five



BLAKE MEMORIAL.



SYLVAN AVENUE, WALNUT HILLS CEMETERY.

cents and this price includes perpetual care, a portion of the amount received being set aside, the interest of which is now nearly sufficient for the purpose. It will readily be seen that in time, say fifteen years, an enormous fund will accumulate which will naturally, if it were desired, put a premium on the sale of lots, but I imagine the original rules will ever be kept intact and that the town will vastly benefit from its wise investment.

At the Town Hall Clerk Mr. Baker shows a superb system of keeping records of lots, interments,

etc. He has constructed a book which is ruled by squares, each page shows the size of lot, locality and number of interments and character of adornment. These squares are scaled to represent one foot, so that if A owns a lot where used two squares of one foot each are left on the border front of the lot; a restriction observed invariably. Thus Mr. Baker holds a complete map, or record as it were of the inhabitants who slumber in this "Couch Magnificent" for reference.

The care of the Cemetery, trenching, grading and finishing is most thorough and with the income reserved from the Perpetual Care Fund investment which is not sufficient as yet to make the Cemetery self supporting, the towns people are philanthropic enough to make all deficiencies on the matter good, and the grounds will ever be kept as the original designs intended it should.

An example well worthy of repetition in many other localities.

Frank T. Robinson.

With their accustomed vim in such matters, the French authorities are going ahead in their preparations for the great international exhibition set for the year 1900. It is quite certain that the Art sections will abound in good things, and it is earnestly to be hoped that our American sculptors will do their best, especially in the line of a distinctively American character.

Sculptured Monuments of Philadelphia.—II.

BY WALTER PERCY LOCKINGTON.

With keen perception it was foreseen that the memory of the maid would grow in the hearts of the French, and none immortalized her more than Shakespeare in his lines in Henry VI:

BASTARD—Search out thy wit, for secret policies,
And we will make thee famous thro' the world.
ALENCON—"We'll set thy statue in some holy place
And have thee revered like a blessed saint,
Employ thee then, Sweet Virgin for our good."

The figure in bronze is the conception of Emanuel Fremiet, of Paris, France, not the peer of Paul



JOAN D'ARC.—EMANUEL FREMIET, SC.

Dubois perhaps, but one who bears an excellent reputation among the French for the vast amount of good work executed by him. The situation is a charming one, standing on the cultivated edge of the East Park, and facing towards the Girard bridge and West Park, it appeals to the many thousands daily traversing in search of business and pleasure. The figure is soft in its lines, the balance charming, and the conditions of pose easy, nor has it been grossly romanced. Wisdom dictated the hand of Fremiet, when he chose his model, for experience teaches the student of human nature, that courage is more oft a companion of the petite body, and a stranger to the heart of the over developed Amazon. Armed cap-a-pied, Jeanne D'Arc rests her mail plated feet lightly in the stirrups, left hand employing the single rein, and right arm extended and raised above her head, bearing the banner of the Fleur-de-Lys.

The horse is short, chunky and with regret let us say lumpy, a feature often noticeable in the work of Fremiet, bearing evidence of the sculptor making a composition of the Flemish, English and

Danish horse to harmonize better with the small proportionate figure. The pedestal, 7 feet by 12 feet, of Indiana limestone, combed and dressed, already shows signs of disintegration, being badly cracked on the three sides. Between the top or head mould are inscribed the dates 1409-1431.

Without doubt the Fairmount Park Art Association have employed their means judiciously in making this graceful acquisition to their collection, since in the girlish proportions one conceives more admiration and sympathy, than in the subjects treated by Gabriel Max, or Bastien Lepage.

As one branches off from the main road by the picturesque boat houses of the Pennsylvania, Malta and Vespers rowing clubs,—which, with others, fringe the banks of the sluggish waters of the Schuylkill,—and bears to the right driving road, commencing at the base of Lemon Hill, the charming group of Auguste Nicholas Cain's "Lioness Carrying to her Young a Wild Boar," is to be seen.

Cain! What a host of reflections does the name call forth. A multiplicity of genre groups—the animal world always portrayed with that calm sense of dignity, in the development of its brute force and serenity, the weaker down-trodden by the dominant powers of the stronger.

And gazing upon this splendid example one recognizes the master hand, the human mind, striving and with success to extract an interest entirely sympathetic, since it reaches a vein of pathos, and renders cold by comparison, the figure of man, innately clothed in modern costume, or Roman toga, lifeless, spiritless, and with no action calculated to force from the human heart either the pain of regret, or the soft polished sigh of sentiment. This group in bronze, of life size, mounted on a polished pedestal of Quincy granite, 10 by 4 feet, rising 6 feet clear from the ground, is dignified to a degree. The proud carriage of the mother lioness, showing her three young cubs the unfortunate young boar, held by the scurf of the neck, its setaceous coat drawn up between the massive paws of its conqueror, paws gathered up in that piteous sense of humility displayed by cat and dog alike when capitulating for mercy in the hands of man, and the baby yelping cubs climbing over the cactii covered ground, eager for the signal of devastation which too surely awaits the crowning event of its capture.

Sturdy, massive, but in no degree exaggerated, one is cognizant of the sculptor's desire to be truthful and faithful in the lines of anatomy; his work seems always to be an edition of his strong, rugged form and nature, and yet the mind shows itself in the easy grace of his work, a grace and

dignity known only to the animal kingdom.

Auguste Nicholas Cain, first saw the light of day in Paris, November 16, 1822, and very early in life evinced a desire for roaming in the woods, feeding his young perceptive qualities on the actions of the squirrel and dormouse, birds and frogs, transmitting to his mental camera the foundation of the many groups that became the issues of the wanderings. Under the watchful eyes of Ruse, and later, Guionnet, he caught the spirit necessary to develop the passion of his past experience, which resulted in his giving to the world at the age of 24 years his "Warblers Defending their Nest against a Dormouse."

In this he attracted the attention of his future master, the irreproachable Barye.

Under the master's care, and ever vigilant eye, Cain breathed the atmosphere calculated to make ambition grow, although never able to reach the loftier standard and magnitude of Barye, he was sufficiently successful to win for himself at the age of 31 years, his first medal, and at the age of 47, was made Chevalier of the Legion of Honor, and an Officer in 1883.

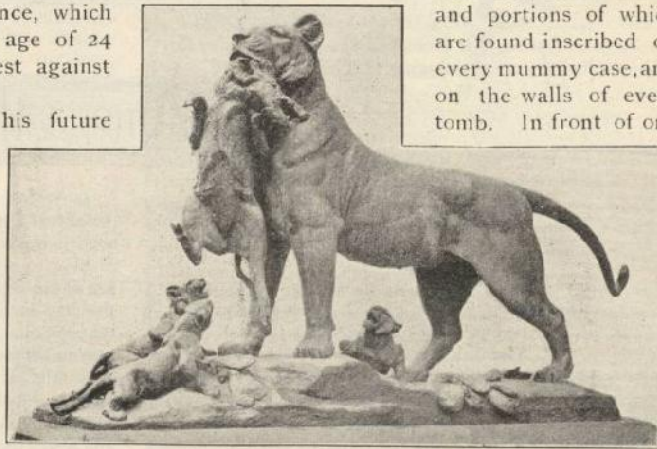
A "Rhinoceros Attacked by a Tiger" of 1884, a "Lioness Feeding her Young" in 1886, "Tiger and Crocodile" and the "Tiger's Family", his "Tigress," a very strong piece of work to be seen in Central Park, New York, are but a few of the distinctive hand marks left behind by this strong mind, which closed its charming career on the 7th day of August, 1894, at the age of 72 years.

Copies of Cain's "Vulture and Bear," "Lion and Crocodile," and "Tiger attacking a Rhinoceros" were among the exhibits at the Chicago World's Fair.

The Oldest Obelisk.

The oldest of all the obelisks is the beautiful one of rosy granite which stands alone among the green fields on the banks of the Nile not far from Cairo. It is the grave stone of a great city which has vanished and left only this relic behind. That city was the Bethshemesh of Scripture, the famous On, which is memorable to all Bible readers as the residence of the priest of On, Poti-pherah, whose daughter, Asenath, Joseph married. The Greeks called it Heliopolis, the City of the Sun, because there the worship of the sun had its chief center and its most sacred shrine. It was the seat of the most ancient university in the world, to which youthful students came from all parts of the world to learn the occult wisdom which the priests of On alone could teach.

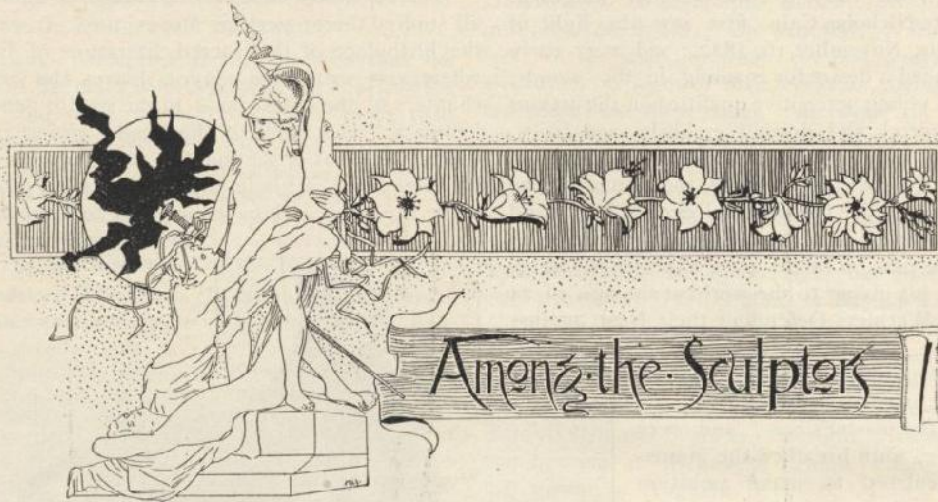
Thales, Solon, Eudoxus, Pythagoras and Plato all studied there; perhaps Moses, too. It was also the birthplace of the sacred literature of Egypt, where were written on papyrus leaves the original chapters of the oldest book in the world, generally known as "The Book of the Dead," giving a most striking account of the conflicts and triumphs of the life after death, a whole copy or fragment of which every Egyptian, rich or poor, wish to have buried with him in his coffin, and portions of which are found inscribed on every mummy case, and on the walls of every tomb. In front of one



LIONESS CARRYING TO HER YOUNG A WILD BOAR.—AUGUSTE N. CAIN.

of the principal temples of the sun, in this magnificent city, stood, along with a companion, long since destroyed, the solitary obelisk which we now behold on the spot. It alone has survived the wreck of all the glory of the place. It was constructed by User-tesen I., who is supposed to have reigned 2800 years B. C., and has outlived all the dynastic changes of the land, and still stands where it originally stood nearly forty-seven centuries ago. What appears of its shaft above ground is sixty-eight feet in height, but its base is buried in the mud of the Nile, and year after year the inundation of the river deposits its film of soil around its foot, and buries it still deeper in its sacred grave.—*Pall Mall Gazette*.

The German Student's monument to Prince Bismarck unveiled at Rudelsburg, Germany, represents him as a fighting student. The Prince is sitting in a large armchair, dressed in the garb of a corps-student. One leg is lightly thrown over the other. The left hand rests easily on the hips, while in the right he holds the dueling sword. The head is carefully modelled from an original sketch made in student years. The statue is of bronze, on a handsome pedestal of red and gray granite, which also has a portrait medallion of the prince of to-day. The model of his famous dog Ariel, sits on the base looking up at the master.



EDWARD KEMEYS has recently finished a model of "A Monument Commemorative of the Age Which is Passing Away." It represents an Indian on a horse at rest.

THE statue of Mozart, by C. H. Niehaus of New York, intended for the new Congressional Library at Washington, and put into bronze by the Gorham Manufacturing Company, is one of a number of figures designed to represent the arts and sciences. The figure of the great musician is 6 feet 6 inches high in a pose combining ease and gracefulness with deep thoughtfulness. In the left hand, folded carelessly across his breast and half supporting the other arm, is the music book in which he has been reading, the index finger between the leaves still marking the place. The leader's baton in the right hand is marking the measure, and the whole soul of the musician is absorbed in his art. The expression of the face shows power with nobility of nature and refined intelligence. He is in deep thought, the eyes gazing at the ground, yet seeing nothing. The modelling of the face is considered excellent, bringing out the composer's well-known characteristics. The long coat is thrown open, showing the waistcoat and exposing wide ruffles from the neck roll down the bosom and on the wrists. The small clothes and the low shoes with large buckles show the fashion of the period. The right knee is bent in an unconscious attitude of ease, and a long cloak is thrown over the right shoulder, the folds being gathered over and under the left arm and extending to the floor. The whole figure expresses power, and is said to be one of the best creations of this sculptor.

His statue of Moses, also for the Congressional Library, and also cast by the Gorham Manufacturing Company, is of the same height as Mozart, but is a distinct departure from the conventional ideas of Moses. The figure shows the leader and the law-giver of the Israelites, and in depicting the character he has adhered closely to the ancient Hebraic traditions. He represents the man of power. There was a ruggedness and grandeur about the character of Moses not possessed by the other leaders of the Hebrew people. The *New York Times* says: "The figure is shown in the act of delivering the new law to his followers, and there is a suggestion of the ecstasy of his recent communion with the Most High in the face of the lawgiver. The pose of the figure is one of grandeur, dignity and power. The right foot, which is extended, rests upon a block of stone, forming the support of the graven tablet, which is held in the hol-

low of the right arm, the lower end resting on the hip. With the left hand Moses reaches back to draw forward the robe that rests on his shoulders. In the face the artist has given full play to his ideals. The robe worn rests partly on the head and then falls in graceful folds to the feet, being gathered at the waist by a sash. Beneath this robe the hair sweeps back from a broad, high forehead. The eyes are large, full and deep set, and above them projects the eyebrows, bushy and prominent. The long white beard curls from the upper lip to the breast, and the entire countenance clearly shows the grand dignity, the inflexibility and the justice of the law that he represents."

A CONTRACT was made with Augustus St. Gaudens in 1885 by the Fairmount Park Association of Philadelphia for a monument to ex-President Garfield, to be "a single figure statue," to be delivered "on or before December 1, 1887." In successive reports to the association the question of modified plans was constantly presented until 1894, when it was reported that the memorial was assuming form. The completed monument is declared to be very disappointing. Instead of the heroic figure a bust of Garfield surmounts a pedestal 15 feet high, against which stands the winged figure of an angel with sword and shield. The Philadelphia *Item* is very caustic in its criticisms, even calling upon the association to decline to receive the monument, and the subscribers to demand the return of their money. Opinions may differ on the design in its artistic merits or its adaptability to its object, but the delays in the fulfilment of contracts of this kind are detrimental to all concerned.

SAMUEL KITSON of Boston has recently completed a marble bust of Gov. Greenhalge which is considered one of Mr. Kitson's best pieces of work. The governor is portrayed as a man of vigor. Intelligence and kindness are depicted in the well-modelled features.

JOHN M'NAMEE, a sculptor of considerable means and undoubted genius, connected with Larken G. Mead, recently died at the Villa Trollope in Florence. Mr. McNamee was not so universally known as many others, principally because he made his art his pleasure and divertment rather than otherwise and was indifferent to commissions. A handsome monu-

ment has been erected to his memory at Florence, the work being executed at MacFarland's studio in Carrara.

RICHARD W. BOCK of Chicago, has completed in the clay his model of the heroic group of the "Color Bearers" to be placed in the Chickamauga Park by the citizens of Lancaster, Pa. It will be cast by the American Bronze Company of Chicago. The monument consists of two figures, heroic in size; the subject is taken from the account of an actual occurrence. A shattered flag is held by both men. One hand of the falling hero is full of vigor in the physical impulse to keep his grasp on the flag-staff. The other hand is moved by mentality; life is ebbing, for the owners effort to raise the colors resulted in a death wound, and a broken sword is at his feet. The sculptor has been successful in his rendering of the face of the dying soldier. The work is pronounced strong and good, the details being well worked out. Mr. Bock studied under the famous Emanuel Fremiet, sculptor of the equestrian statue of Joan o Arc.

THE Arche Club of Chicago will hold its second annual salon Feb. 25 and 26, 1896. The following prizes will be offered: \$100 for first prize in painting, and \$50 for second prize; \$100 and \$50, respectively first and second prizes in water color; \$100 and \$50, first and second prizes in sculpture. These prizes will be awarded by a jury consisting of one member chosen from the Chicago Society of Artists, one from Palette Club, one from the Cosmopolitan Art Club, Arche Club and exhibition committee. The money prize for sculpture is a decided step in advance. The action of the club, it is believed, will lend itself immeasurably to the encouragement of art in Chicago, which, however, has had a very rapid development since the World's Fair.

FREDERIC REMINGTON'S bronze statuette of the "Bronco Buster," while attracting considerable attention, is also exciting criticism. The work stands about 20 inches high. The broncho is a vicious looking beast, standing on hind legs, with back humped and pawing the air. Its rider is the typical cowboy, with sombrero and buckskins, holding on with comparative ease, but alert to take care of himself, and with short whip upraised to bring the poor beast into subjection. Mr. Remington's artistic illustration work has made his horses and cattle subjects familiar to all, but the "Bronco Buster" is an effort in another direction. The statuette was cast by The Henry Bonnard Bronze Company of New York.

THE exhibition to be held in Berlin next year will commemorate the 100th anniversary of the foundation of the Royal Academy of Arts in that city. It will be international in character and American sculptors will be invited. U. S. Consul General Clas DeKay suggests that not only American sculptors residing in Paris be asked, but also those in America, especially of the larger cities. He also suggests that one or more rooms be set aside so that contributors from the United States may exhibit together. It will be held in the building recently occupied by the International Exhibition of 1895, which is very large, built chiefly of iron and glass and well lighted from above. Exhibits will be confined to paintings and sculptural and architectural works and drawings. Foreign work must be the work of living sculptors; there will be, however, a retrospective department for work by deceased and living members of the Royal Academy extending from 1686 to 1896. Only three exhibits will be received from one sculptor which must bear his name. Copies will not be admitted, architects may send photographs of buildings. Foreign works must be delivered at the galleries between the 18th and 25th of March. The prizes will be awarded by the German Emperor, under advice of an interna-

tional jury of winners of medals and orders, who will not have works of their own in the exhibition.

E. S. WOODS', Hartford, Conn., bronze statue of Col. Thomas Knowlton, a revolutionary hero, has been unveiled at Hartford. It is a standing figure of commanding pose, 8 feet high, standing on a pedestal of about the same height. It was cast in bronze by M. H. Mossman of Chicopee, Mass. Upon the pedestal is a bronze tablet reciting the deeds which justify the erection of the work by the state.

A PLASTER sketch of John Hancock has been submitted by invitation of the Massachusetts Sons of the Revolution at Boston, by C. E. Dallin. It represents Hancock standing, with a scroll in his left hand pressed to his heart. In his right hand he holds a pen, the arm hanging naturally by his side. The Boston Herald says: "The attitude is dignified, spirited and yet easy, and as befits the aristocratic breeding of the man, the expression of the whole figure is one of much elegance. The head is held proudly erect, but no straining for effect is apparent. The pose is altogether just and natural." Mr. Dallin's model for the features was Copley's portrait in the Art Museum.

THE first Roman scholarship ever bestowed upon an American has been awarded to H. A. MacNeil, the Chicago sculptor, whose work on the Marquette building has done him so much credit. This scholarship was founded by Rhinehart of Baltimore, a sculptor of the early American school. This "Prix de Rome" includes a studio and other accommodations in the Villa Ludovici, Rome, an allowance from the Rhinehart fund of \$1,100 for passage, and other expenses, personal and professional, during the first year of holding the prize. Mr. MacNeil is rapidly coming to the front as the exponent in sculpture of the fast diminishing aborigine of this continent. In this line he has achieved a marked success, a freedom and originality in modeling being conspicuous. He was born in Chelsea, Mass., in 1866, and began his studies in the Massachusetts Normal Art School, and he found that modeling was the thing that he loved best. He filled a position in the Art Department of Cornell University and made his first visit to Paris in 1888. Next year he went again to Paris and studied a year under Chapu. After passing honorably at the Ecole des Beaux Arts he entered the studio of Falguiere, where he remained one more year. Returning he found a place with Martini in New York City, where he designed and developed many of the sketches for Martini's World's Fair work. The summer of '92 found Mr. MacNeil in Chicago, where he has made his home to the present time.

COUNTESS FEODORE GLEICHEN, whose sculptural works are numerous, and of whom much has been written of late, inherits a taste for sculpture from her father, who, after retiring from an active career as a naval officer, indulged a natural taste for the art and left a large number of works to attest his ability. The daughter from a child evinced decided bent in the same direction, and seriously took up the study. She joined the Slade school at 17 and worked hard under Prof. Legros. She travels considerably in the course of her studies, but her work is confined to England. She has exhibited in the Royal Academy, Grosvenor Gallery and New Gallery, London, besides which she is a fellow of the Painters' Etchers' Society, and has displayed more than usual artistic talents outside of sculpture not generally allied thereto. Last year she exhibited at the Royal Academy a figure of Satan suggested to her faculties by Milton's "Paradise Lost."



AN ITALIAN MONUMENT.

Foreign Notes.

A statue of Ibsen by Stephen Sinding is to be erected at Christiania, in front of the Royal Theatre. This will be a taste of immortality while living in which few men are honored.

Recently the municipality of Pontoise, near Paris, unveiled a monument commemorating Maria Deraismes, the European advocate of woman's rights. Thus France scores another point in erecting a monument to a woman.

The monument recently erected at Calais by the sculptor Rodin, is thought by many to be that artist's masterpiece. It represents the unfortunate citizens of Calais, who were obliged to appear before the English King, Edward III, with ropes round their necks, under the terms of capitulation which he imposed.

The statue of the great German scientist Ohm, which was unveiled in the summer at Munich, is of white marble and stands on the square in front of the Technical High School. It is a seated figure, natural and easy in pose, with drapery about the chair and books at the feet. Around the pedestal there are figures in relief. There is also an inscription to the effect that the statue was "erected by his admirers and disciples." Funds came readily from England, France and America. The statue was designed and cut by Professors von Thiersch

and von Rucmann, after an old photograph and a painting in the Academy of Science.

The equestrian statue of Garibaldi, unveiled on the Mons Janiculus, Rome, in September is a noble work of art. The statue is of bronze twenty-one feet high. The horse lifts up its head in a natural, lifelike attitude, and the rider wears his traditional "poncho" and cap, and has a meditative air. His glance falls on the Vatican. The base is of granite, and on its four sides are allegorical groups. The side facing Rome represents the defense of Rome against the French in 1848; and the opposite side is the Garibaldians taking the Galata Fiume. The third and fourth sides show groups symbolical of America and Europe. The work is by the sculptor Gallori, a Tuscan. The bronze was cast by a new process, and only four months were expended in the work with twenty-five tons of metal consumed.

The work of building war monuments in Germany is not yet finished. The *Illustrated Zeitung* of Leipsic recently gave an illustration and description of the Colossal statue of Emperor William I, which it is intended soon to erect on the heights of the Porta Westphalica, which when completed two years hence, will be the third of Germany's Colossal memorials. The statue of the Emperor will be over twenty-two feet high. The monument as a whole will be a magnificent structure, vaulted over and crowned with the German imperial crown—the symbol of the re-establishment of the German Empire. The imperial figure will wear the uniform of the Gardes-du-Corps, the insignia of the order of the Black Eagle, the Order of the House of Hohenzollern and the Iron Cross, and from the shoulders will fall the coronation mantle, indicating the assumption of the imperial dignity in the Hall of Mirrors at Versailles, January 18, 1871. The monument will be erected on the west of the Witte Kindberg, two hundred and eighty feet in height, whence the view extends into Hanover and Westphalia. The statue is the work of Professor von Zumbusch of Vienna, while the plan for the monument is by Bruno Schmitz, the Berlin architect.

One hundred and thirty designs have been submitted by architects from all over the world for the Lemon Hall Art Building, Philadelphia, and Philadelphians are anxious that the jury of experts chosen by the Fairmount Park Commissioners shall take hold of the matter and select a design, so that the corner stone may be laid next spring. It is proposed to adopt a sectional plan of construction so that wings can be built as required and as the city's art treasures increase and demand an extension. This would result in a magnificent museum if properly arranged.

Monumental Notes.

In the state sale of lands for taxes in Rockland, N. Y., in which some 2,000 pieces were offered, Rockland County purchased the Andre monument plot at Tappan. The vicissitudes of the Andre monument have been many and various.

The memorial monument to Bishop Kipp in Cypress Lawn Cemetery, San Francisco, Cal., of which previous mention was made in these columns, was changed from the sarcophagus, originally intended, to a Celtic cross. This was unveiled last month. The carving was executed by Frederick Flohr, sculptor, of San Francisco.

A handsome fountain is to be placed in Atlanta, Ga., in memory of Judge John Erskine, the distinguished jurist, by his daughter, Mrs. Willard P. Ward. A bronze fountain will stand on a circular platform of Marble on which is a semi-circular seat, partially surrounding the fountain, also cut from marble. The diameter of the seat will be fifteen feet outside, and the fountain of convenient height for drinking purposes. The design is by Messrs. Renwick, Aspinwall & Renwick, architects of New York City.

The town of Sudbury, Middlesex County, Massachusetts, through its monument building committee, has awarded a contract to Badger Brothers of Quincy, Mass., for the erection of a granite memorial in honor of the revolutionary heroes of the place, of which there were a very large number. This town was settled in 1638, being incorporated one year later, and is a locality of much historic interest. Its citizens who are to be thus memorialized fought at Lexington, Concord, Bunker Hill and other places equally well known. The proposed monument to be completed on or before April next, is to be of the colonial style of architecture, constructed of medium grade Quincy granite, and to be surmounted by a life-size statue of a revolutionary soldier, cut in white Westerly granite.

The Wednesday Club, a woman's organization of St. Louis, have erected at 19-21 South Main street, St. Louis, a bronze tablet commemorating the first establishment of civil government in St. Louis by Capt. Louis St. Ange de Bellerive, Jan. 21, 1766. The tablet is 18 inches by 24 inches, of heavy bronze and carries the following inscription: "On this site, January 27, 1866, in the house of Maxent, Laclede & Co., civil government was first established in St. Louis by Capt. Louis St. Ange de Bellerive, Military Commandant and Acting Governor of Louisiana." The blank spaces in the tablet are appropriately filled with bas-reliefs of Indian's heads. Mr. R. P. Bringhurst was the

sculptor. The tablet is placed about nine feet above the sidewalk.

Commissioners' Report.—Chickamauga National Military Park.

The Chickamauga and Chattanooga National Park Commission has filed its report with the Secretary of War for the year ending Oct. 31, 1895. Among the facts of interest recorded are: Forty-two miles of road constructed; 5,326 feet of fencing or guard rails placed at dangerous places on the Missionary Ridge road. Since the last report the "Sherman Fighting Ground" on Missionary Ridge has been purchased, making the total number of acres 5,568.25, at a cost of \$27,829.95.

The following monuments, markers, etc., have been placed: Nine United States monuments for regular regiments and batteries; eight triangular shell monuments, each 10 feet high, for the four confederate and for union commanders of brigades killed or mortally wounded; six 8-inch shell monuments to mark headquarters.

During the year 116 foundations were put in for state monuments, built from stone quarried on Chickamauga field. The states erected monuments as follows to date: Ohio, 55 monuments, 53 markers; Illinois, 29 monuments; Michigan, 12 monuments, 12 markers; Wisconsin, 6 monuments, 5 markers; Minnesota, 5 monuments; Indiana, 4 monuments; Kansas, 3 monuments, 2 markers; Missouri, 3 monuments, 18 markers, and Massachusetts, 1 monument. Pennsylvania erected 2 bas-reliefs on Lookout Mountain.

In addition to those already represented the states of New York, New Jersey, Connecticut, Iowa, Virginia, West Virginia, Alabama, Arkansas, Florida, Georgia, Kentucky, Louisiana, Mississippi, North Carolina, South Carolina and Texas have all appointed state commissions to locate their respective organizations on the battle-fields.

There have been placed in position 212 historical tablets, 3 by 4 feet, each containing from 200 to 300 words; also 286 distance and locality tablets and 51 battery tablets. Battery positions are marked by guns similar to those used by the respective batteries, and 164 have been placed, with cast iron painted carriages of the patterns of 1861. The wheels are securely bolted to stone foundations. Of the 350 guns in the union and confederate batteries, 83 marking 29 union batteries in 36 positions, and 59 marking 27 confederate batteries in 30 positions, are placed.

Much remains to be done, but the commission anticipates that the states unrepresented will be heard from this winter.



REGULAR EDITION.

THE MECHANICS FAIR SCULPTURES: PAUL REVERE; Pediment for New State House; Equestrian Statue of General Sherman; Robert Burns—pages 740-742.

EMIL AUGIER MONUMENT, DUCHESS D'UZES, SC. page 743.

WALNUT HILLS CEMETERY, BROOKLINE, MASS. pages 744-745.

STATUARY, FAIRMOUNT PARK, PHILADELPHIA: Joan of Arc; "Lioness carrying to her Young a Wild Boar"—pages 746-747.

AN ITALIAN MONUMENT—page 750.

CARYATIDES—page 754.

ADDITIONAL ILLUSTRATIONS IN INTERNATIONAL EDITION.

THOMAS FOSTER, CROSS MONUMENT IN FOREST Hills Cemetery, Utica, N. Y., Westerly Granite. Smith Granite Co., Westerly, R. I., designers and manufacturers.

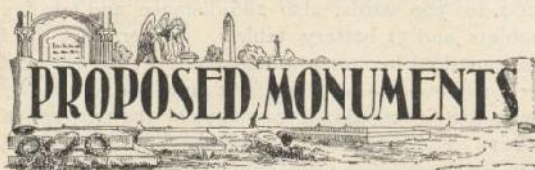
HENRY HOWARD MONUMENT, LAKESIDE CEMETERY, Port Huron, Mich., Red Peterhead Granite. Dimensions: Lower base 6' 0" x 6' 0" x 1' 6", second base 4' 9" x 4' 9" x 1' 3", die 4' 0" x 4' 0" x 2' 6", ball 4' 0" diameter. Philo Truesdell, Port Huron, designer and contractor.

MONUMENT TO THE COUNTESS MELLERIO, Florence, Italy. This piece of sculptured marble is the work of Canova. The bust of the deceased is placed upon a pedestal, which stands out from the marble tablet. Before it stands a tall and dignified figure representing Pity, whose arms are thrown around the bust. Grief is depicted in every line of the finely modelled figure.

EXAMPLE OF MAUSOLEUM FROM A BELGIUM Cemetery. Interments are made in the concrete foundation.

DESIGN FOR A GRANITE MONUMENT, BY RICHARDS & Trowbridge, Quincy, Mass. "Grover." Sizes. First base 5' 6" x 3' 2" x 1' 2". Second base 4' 2" x 1' 10" x 1' 0". Die 3' 8" x 1' 4" x 3' 0".

Note.—Chickamauga monuments. The photographs from which our illustrations of the monuments in the Military Park at Chickamauga are made, did not reach us in time to use in this issue. This series will be continued during the coming year.



Winchester, Va. Charles Broadway Rouss has offered to contribute \$500 toward the erection of a monument to the South Carolina confederate dead if the citizens of that state will contribute a like amount.

Brooklyn, N. Y. A movement is on foot to erect a monument to the memory of Rev. Father Franscoli.

Sault Ste. Marie, Mich. The erection of a statue to Gen. Pece, U. S. Engineers, whose name will be inseparably united with the magnificent engineering works constructed under his charge at that place, is seriously advocated in Detroit, his headquarters.

Terre Haute, Ind. An association has been incorporated to erect a monument to Vigo County soldiers who fell in the war.

Washington, D. C. Petitions will be presented to congress asking for an appropriation for the erection of a monument to Gen. Grant in Washington. The movement is meeting with very strong support.

New Haven, Conn. A statue of ex-President Woolsey will be erected on the Yale campus by the Yale corporation. The model has been made by Prof. Weir.

Princeton, N. J. The trustees of Princeton college have been recommended to try to secure a bronze statue of Gov. Zolcher to be erected in front of Old North at the coming celebration of the founding of the college.

Chickamauga. The South Carolina commission has decided to recommend to the legislature at its coming session the following monuments for Chickamauga: One principle one to commemorate the valor of all South Carolinians, and smaller one to Kershaw's brigade, one to Manigault's brigade, one to Gists brigade, and one to Culpepper's battery. It is expected that from \$9,000 to \$12,000 will be expended.

Milwaukee, Wis. \$700 has been collected toward a soldiers' and sailors' monument to be erected at the Soldier's Home of this city.

New York City. By a resolution of the park commissioners the soldiers' and sailors' monument will be erected at Fifty-ninth street and Fifth avenue, entrance to Central Park.

Manchester, Vt. Mr. F. H. Orvis headed a subscription list with \$1,000 for a soldiers' monument at this place. A Soldiers' Monument Association has been formed, with F. H. Orvis, president.

Kansas City, Mo. The Kansas Soldiers' Monument Association has been formed to erect a state monument. An application for a state charter was ordered, when financial work will at once begin.

Chicago, Ill. Funds are accumulating for a monument to Eugene Field, the children's poet, whose recent death has aroused the whole country toward honoring him.

Flint, Mich. The supervisors have declined to make an appropriation for the soldiers' and sailors' monument at the present time.

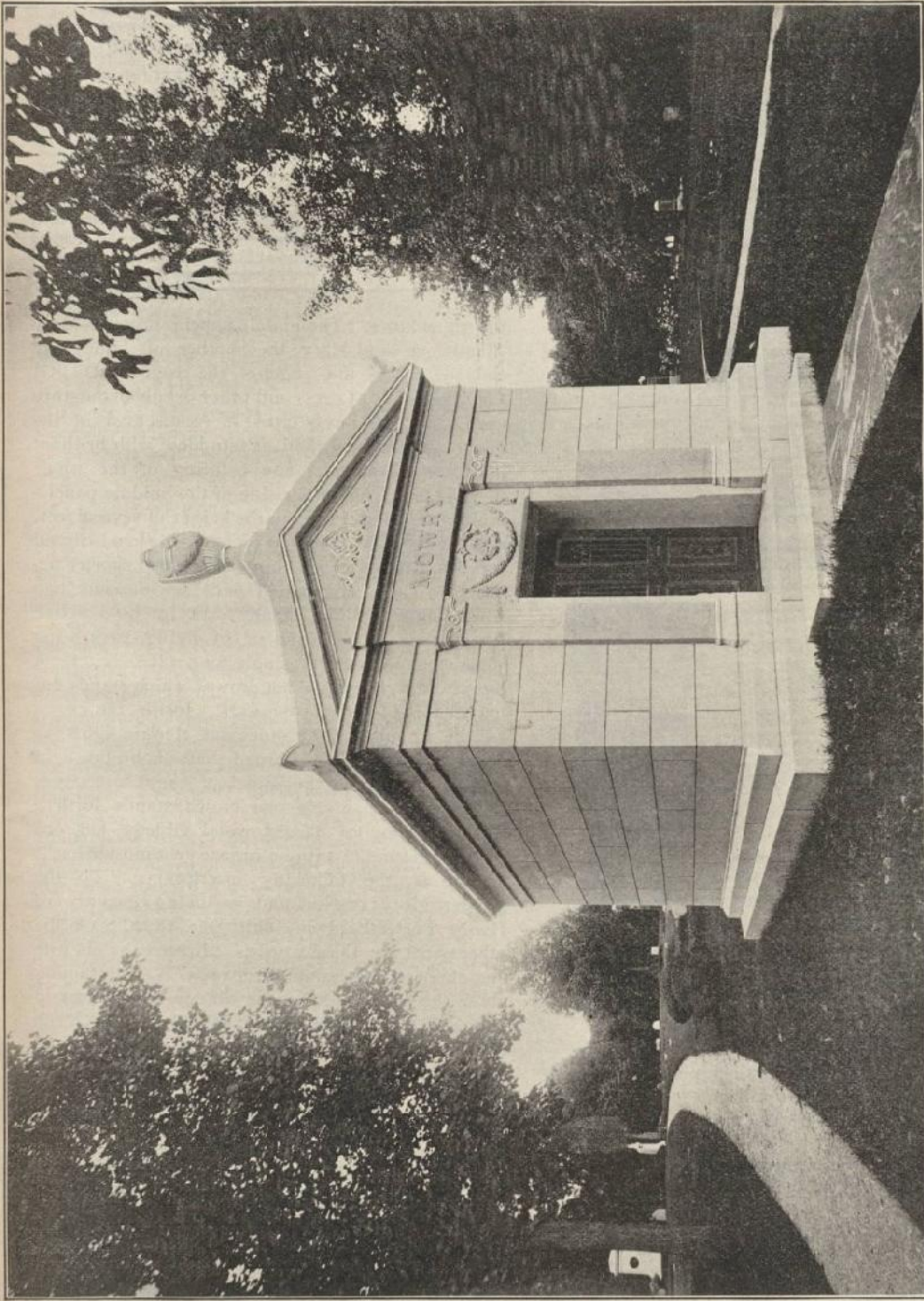
Greene, N. Y. An association has been formed for the purpose of erecting a soldiers' and sailors' monument. Secretary, Eugene Clinton.

Warren, N. Y. The grand jury of Warren county has recommended the erection of a \$5,000 soldiers' monument.

Columbia, S. C. The Gary Monument Association has been formed to erect a monument to Gen. Mart Gary to cost \$7,000.

Saginaw, Mich. Col. M. Jeffers of this city will erect a monument to the fallen soldiers of the Saginaw valley. A permanent organization has been formed. W. R. Marshall, Saginaw, secretary.

A life-size bust in bronze of the late Judge Henry F. French has been placed in the public library of Exeter, N. H., the work of his son, Daniel Chester French. It is the gift of his three children.



The above is a cut of a Vault erected last spring in Englewood, N. J. Stock is fine grained medium Barre, cut and finished with Pneumatic Stone Dressers, by Chas. H. More & Company at their Montpelier plant. While plain and simple in its outline, it is in good proportion and well constructed. The outer surface being all hammered, presents a smooth and unbroken surface to the weather, thus preventing any lodgment of dust and other matter to mar or discolor its beauty. On this account, plain hammered work is far superior to rock face or rustic work, either in Monuments or Mausoleums of this kind. For sizes and prices, please apply to **CHAS. H. FIORE & CO., Barre, Vt.**, or to their **Chicago office at 53 Dearborn St.**

(Note: Page 753 is being presented below in landscape view so you can more easily view it. Peggy B. Perazzo.)



The above is a cut of a Vault erected last spring in Englewood, N. J. Stock is fine grained mediam Barre, cut and finished with Pneumatic Stone Dressers, by Chas. H. More & Company at their Montpelier plant. While plain and simple in its outline, it is in good proportion and well constructed. The outer surface being all hammered, presents a smooth and unbroken surface to the weather, thus preventing any lodgment of dust and other matter to mar or discolor its beauty. On this account, plain hammered work is far superior to rock face or rustic work, either in Monuments or Mausoleums of this kind. For sizes and prices, please apply to **CHAS. H. MORE & CO., Barre, Vt.**, or to their **Chicago office at 53 Dearborn St.**

BEATS ALL, How a good thing takes.



IT appears that our list of **special spring stock** contains some **real bargains**, state what kind of **stock** you want for **spring** trade, **we will do the rest. SPECIAL terms** will be made on orders placed previous to **January 1st.** Send your tracings of **Quincy, Barre, New Westerly, all imported granites and statuary.**

Mention this advertisement in writing.

E. C. Willison

110 Boylston St. Boston.	Aberdeen.
Manhattan Bldg., Chicago.	So Quincy.
	Barre.

Caryatides.

These two caryatides representing "Learning" and "Justice" were modelled by Herbert W. Beattie, of Quincy, Mass. They are designed for the corners of a family monument now being made for



LEARNING.



JUSTICE.

a prominent attorney. This is a pleasing departure from the conventional polished column with its stereotyped cap and Mr. Beattie has been quite successful in his treatment of the figures.

Church Decorations.

A fine super-eredos has been in course of erection in St. Johns Episcopal Church, Detroit, Mich., in memory of the late Gov. Baldwin, by his widow. The work is known as Venetian mosaic. There are three Gothic panels, the central panel being about 6 by 10 feet in size, the other two being about a

fourth as large. The middle panel represents Mary Magdalene and Mary, the mother of James and Salome, before the angel of the risen Lord. All the accessories of dress and other details of the story are shown. A large cross is represented in the garb of the angel, and is studded with brilliant jewels of all colors. The coloring of the whole piece is fine. On either side of the middle panel a clustered pedestal rises to the height of several feet, and these are surmounted by exquisite hand-carved capitals, each of which supports another shorter pedestal. These last named pedestals support two white angels, which stand forth in bold relief. They appear to be in the act of flying, each being supported by only a single foot. Between them they hold a large golden crown, which stands out two or three feet from the wall. Inside the crown will be a number of incandescent electric lights, so arranged as to throw a broad shaft of bright light over the figure of the angel of the resurrection. Some distance above the crown stands forth a Gothic canopy of carved wood gilded. On one panel in letters of antique bronze on a mosaic background is the following inscription: "To the greater glory of God and in loving memory of Henry Porter Baldwin, obit. Dec. 1892." On the other panel are these words: "Erected by his wife and children, All Saints' day, 1895." The framing about the panel and the rose window is of delicately carved Gothic tracery, all of which is gilded. The background of the middle panel is of gold mosaic.

A Successful Blast on a Large Scale.

At the Long Cove Granite Quarry, Maine, owned and operated by the Booth Bros. & Hurricane Isle Granite Co., the largest blast in that part of the country was successfully operated early last month under the directions of Charles Shuler, of Graniteville, Mo., an expert in large operations of this kind. In the upright face at the end of the quarry a gallery 3 feet by 4 feet was bored, extending nearly 60 feet which was continued at right an-

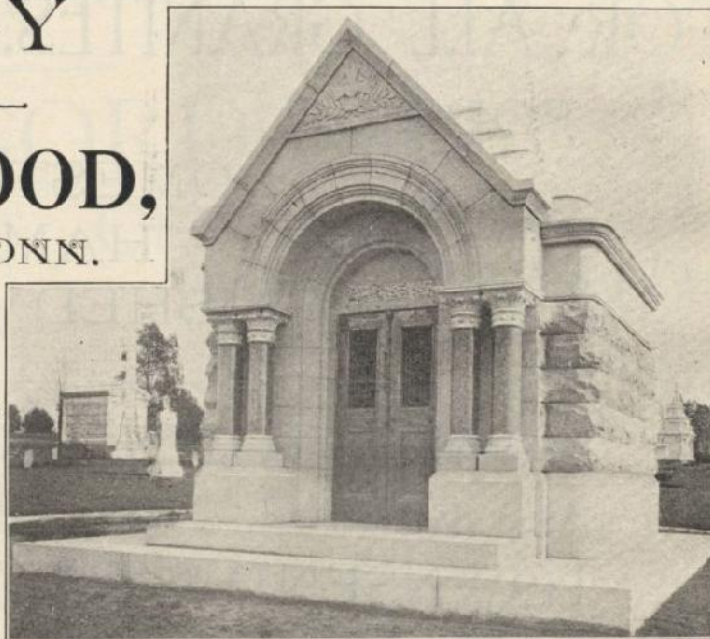
CASEY & SHERWOOD, GROTON, CONN.

MONUMENTS, STATUARY, MAUSOLEUMS AND
BUILDING WORK IN
**RED AND GRAY GRANITE
FROM OUR QUARRIES
IN MAINE.**

ROUGH STOCK IN CARGO AND CAR
LOAD LOTS.

OUR GRAY GRANITE IS ESPEC-
IALLY ADAPTED FOR FINE
CARVING AND STAT-
UARY WORK.

WE MAKE
A SPECIALTY OF
POLISHED COLUMNS AND
PILASTERS IN OUR RED GRANITE.





gles each way 30 feet and 36 feet respectively. At the ends of these arms chambers were cut in which were placed, in all, some 550 kegs of powder. Dynamite cartridges, connected by wire to the electric batteries were located in this powder, and at the proper time the mine was fired. It was a most successful operation, the result being a supply of stone for some time without further blasting, and although it cost some \$3,000 and has occupied many months in preparation, those interested are more than pleased with the results. It is variously estimated that over half an acre of granite was split and seamed with comparatively little waste.

Australian Marble.

Mr. D. W. Custer of Sydney, Australia, sends us the following information concerning the discovery of marble in that colony. It is Mr. Custer's opinion the stone can not really compare with Italian (called Sicilian in England and Australia) marble, but gives the government employes' opinion as stated: "Mr. Gilding, lapidary in the Geological Survey Branch, has forwarded to the Minister for Mines a report on specimens of marble from the deposit near Mudgee. The marble is of a bluish white color, with scattered spots of pink. It is thought that these spots will disappear with increasing depth. The marble, it is stated, should "cope" well, or break off nearly square. It pos-


sesses this quality in a very high degree. In many respects it resembles the Sicilian marble, which is imported into the colony in considerable quantities, in slabs. The lapidary says that from his experience in marbles the Mudgee marble is suitable for all purposes—monumental, sanitary, and architectural—to which the Sicilian marble is put. The marble is from Buccaroo, about four miles from the Mudgee station."

Imports of marble and its manufactures for September were \$55,872, as compared with \$52,726 in September, 1894. Imports for the nine months show increase from \$588,684 to \$617,771. Total imports of marble and stone and manufactures for September have decreased from \$99,781 in 1894 to \$97,789 in 1895, while for the nine months have increased from \$906,262 in 1894 to \$924,724 in 1895. The exports of American marble and stone, unmanufactured, show a decrease in value September from \$6,684 in 1894 to \$5,763 in 1895, and for the nine months from \$81,008 in 1894 to \$51,165 in 1895. The exports of manufactured stone and marble show values of \$70,726 and \$644,388 for the month and nine months of the present year, while in 1894 they were \$57,466 and \$690,520 for corresponding periods. These figures show an increase for September from \$68,122 in 1894 to \$82,762 in 1895; but for the nine months a decrease from \$793,951 in 1894 to \$727,271 in 1895.

FOR ALL GRANITES, 
 FOREIGN
 AND DOMESTIC,
 HAMMERED,
 POLISHED OR ROUGH. 

ADDRESS ALL COMMUNICATIONS TO

WM. C. TOWNSEND & CO.

5, 7, 9, AND 11 MAIN STREET,  ZANESVILLE, OHIO, OR.

TOWNSEND & TOWNSEND

138 FIFTH AVE., NEAR 19TH STREET, NEW YORK CITY.

ABERDEEN OFFICE, PALMERSTON ROAD, ABERDEEN, SCOTLAND.

STUDIOS, CARRARA, ITALY.

Cemetery Notes.

An aboriginal cemetery of large dimensions has recently been discovered at Milford, O. W. K. Moorehead, Curator, of the State Museum, has been making excavations. A large number of human skeletons have been exhumed. In the graves are found a great and diverse variety of weapons, trinkets, utensils, ornaments and religious symbols, in stone, bronze and silver. It is not only a fund of curiosities, shedding light on the prehistoric past, but an invaluable acquisition to ethnological science.

* * *

The American cemetery in Mexico, is situated on the southwestern boundary line of the capital. It is American in the fullest sense of the word, for the full and perfect title therein is vested in the United States, and its management and control are in the hands of the War Department at Washington. It occupies two acres of ground, and in it repose, side by side, the American and Mexican, the German and the Frenchman, as well as other foreigners, for only of late years the right of burial within its walls has been restricted to natives of the United States. In 1873 it became subject to the rules and regulations affecting United States national cemeteries, and by act of Congress, September 28, 1880, the sum of \$10,000 was appropriated "for the purchase, walling and ditching of a piece of land near the city of Mexico for a cemetery or burial ground for such of the officers and soldiers of the United States Army in the war with Mexico as fell in battle or died in and around said city and for the interment of American citizens who have died or may die in said city." The property was conveyed to the United States in 1851 by Manuel Lopez in fee-simple for the consideration of \$3,000, and since then it has always been the object of much solicitude on the part of the American residents of Mexico. The site is in the shape of an oblong square, and is entirely surrounded by

substantial walls, along whose western sides runs the Consulado, or San Cosme river. The grounds are attractively laid out. At the northeast corner is the iron entrance gate. Inside the entrance to the right, is the lodge, the first story of which is of stone, with a double archway and portico, the residence of Capt. John Ayres, the United States superintendent. There are but few graves on which are not to be found the floral mementoes of love and friendship. The only heroes who sleep in the ground are nameless ones, the 750 soldiers who were killed on the plains of Mexico, whose bones are mingled together in a single grave. In memory of these a simple granite shaft about six feet high standing on a square pedestal has been raised and on top is a torch of diminutive size, made also of dark granite. On one side is the inscription:

To the memory of the American
 Soldiers who perished in this
 Valley in 1847, whose bones,
 Collected by their country's order,
 Are here buried.

On the other side is a marble tablet inserted in the granite, on which are written without comment:

Contreras
 Churubusco
 Molino del Rey
 Chapultepec
 Mexico.

Recent Legal Decisions.

LAW RIGHT TO THE POINT.

A jury is not debarred from finding that a receipt in full was not intended to cover all demands, when such is the fact and intention of the parties.

The passenger is entitled to a reasonable time within which

MARR & GORDON,

QUARRIERS, CUTTERS AND
POLISHERS OF THE

CELEBRATED BARRE GRANITE-

Make a specialty of first-class Cemetery Work of every description. Owing one of the **Finest Dark Quarries** in Barre, and fully equipped cutting and polishing plants, with all the latest improvements, including Pneumatic Tools, we are able to compete successfully with any in the trade. We invite all dealers desiring first-class work of any description in Barre Granite
TO CORRESPOND WITH US.

WESTERN OFFICE,
153 LA SALLE STREET,
CHICAGO,

Barre, Vt.

to receive his baggage before the strict carrier's liability ceases, and the less burdensome responsibility as warehouseman begins.

A letter containing an offer to compromise an account by paying a certain sum thereon, but which contains neither an acknowledgement of the justice of the claim, or any agreement to pay the same, will not revive the debt, if barred by the statute of limitations.

If a note signed by a principal and two or more sureties is discharged by the execution and delivery of a note executed by the principal and one of the sureties, and the surety is forced to pay the last note, this does not entitle him to, and he cannot, compel his co surety or co sureties on the first note to contribute.

Judicial veneration for the rule of evidence which pronounces a written contract the highest and best evidence of the agreement between the parties, and denies to either the privilege of adding to or taking from such contract by the introduction of oral evidence, cannot successfully protect such a contract when it is assailed upon the ground of fraud in its procurement.

In the absence of an agreement to the contrary, it is the right of a person to whom stock of a corporation has been pledged to have it transferred on the books of the company to his own name as the holder; to have the old certificates canceled and new certificates issued to himself; to collect dividends accruing to the pledgor; to vote the stock, etc., and if the company refuses to so transfer, he can have his action for damages, if any accrue, and compel the company to register the stock in his name.

PRACTICAL LAW POINTS FROM THE LATEST CASES.

Whatever the agent knows concerning a matter connected with his agency, his principal is bound to know, and knowledge

of an agent, acquired previous to the agency, but actually present while acting for his principal in a particular matter or transaction, will be deemed notice to the principal.

An order of a justice of the peace, to a person garnished, to pay money into court, is not a judgment, but simply gives the creditor the same right to enforce the payment of the money that the debtor previously had.

It is the duty of an employe to go about his work with his eyes open, taking ordinary care to learn the dangers which are likely to beset him in his employment, and to avoid injuries.

If a man undertakes to guaranty a contract which he may know the terms of upon inquiry, and he makes no effort to find out what the terms are, but guaranties it,—says, "I will guaranty that contract,"—and nobody misleads him about it, and he has an opportunity to know what it is if he sees fit, but does not take pains to find out, but thus guaranties it without knowing, he is bound.

When a new corporation is created by the consolidation of two or more other corporations, and no provision is made by statute or the articles of incorporation for the payment of the debts and liabilities of the constituent corporations, the new corporation assumes all the debts and liabilities of the constituent companies, which follow as an incident of the consolidation.

Where a partnership business has been fully settled upon an agreed basis furnished by the books kept by one partner, and all its assets, by agreement, have been turned over to the other partner, and afterwards it transpires that, by reason of the failure of the partner who kept the aforesaid books to enter therein items showing his own receipt of money of the firm, his partner has suffered damage to the extent of such items, an action at law may be maintained for such damage against the partner who caused such injury, and against such sureties as have agreed to be responsible for damages of the character described.



HEAD MARKER IN FOREST HILLS CEMETERY, UTICA, N. Y.

Correspondence.

Advertising.

ANN ARBOR, MICH., NOV. 9, 1895.

Editor Monumental News:

DEAR SIR:—The NEWS asks the experience of the trade in its advertising. It is true, as the NEWS says, that it is difficult to trace the results of newspaper advertising. I will venture to relate an experience, and as a pompous old dutchman proud of his english, used to say, the reader can draw his own "references." Two rival shops, not a thousand miles from this city, intent upon getting a living in the marble and granite business, earnestly sought the best way to accomplish it. A—boasted that he advertised in every paper in the country, and the writer will not try to say how many outside of the country.

B—advertised in nothing, not even printing his card on a fence, he did not even have a business card. He did have a card in a frame, hung at one cemetery entrance. In a short time A—placed a chattle mortgage on everything he had, including his bank accounts and finally settled with most of his creditors for eighteen cents on the dollar. The writer knows of a debt to one firm of over eleven hundred dollars that was settled thus. B's—creditors have managed to get one hundred cents on every dollar they have trusted him for and they still seem willing to take their chances on any orders he may place with them, while it is a question whether A— can place an order for anything, even an ad. Does this help to solve the advertising problem?

R. C. Barney.



George Alfred Townsend, the popular newspaper correspondent, better known as "Gath," has recently had a mausoleum erected. Over the door are the words "Good night, Gath" carved in facsimile of Mr. Townsend's handwriting, about ten times the size of the original. The words have a meaning of great significance to those who understand their import as the last words of every telegrapher's night work, and thousands of times it has gone over the wires, indicating the end of a "Gath" dispatch. The tablet was carved at the works of D. B. Stouffer of Hagerstown, Md.

W. D. and R. D. Morris, the successful marble and granite dealers of Memphis, Tenn., have in contemplation the erection of an extensive plant for the manufacture of monumental and building work.

R. H. Hoffman of Winchester, Ind., completed his contract for the 84th Indiana Infantry Monument at Chickamauga last month. The monument, like the others for that state, is of Bedford stone, 30 feet in height, and is said to be a very satisfactory piece of work.

The Hallowell Granite Company of Hallowell, Me., are

Series No. 2

Original and Practical Designs.

A collection of designs costing \$150 or more

to be executed by hand, at a minimum cost.

23 Designs of popular and saleable styles retailing for less than \$5.00 **For \$5.00**

on 20 separate sheets, 14x21, with book of sizes (3 to each job) and wholesale and retail prices in four popular granites.

Expressage paid when cash is sent with order.

The cheapest and most practical Designs ever issued for the trade in general as evidenced by the many unsolicited testimonials received.

Special Designs and Photographs for the trade.

Chas. H. Gall,

1027 Graceland Ave., Chicago, Ill.



GOOD STOCK.
GOOD WORKMEN.
GOOD MANAGEMENT.
GOOD FACILITIES.
GOOD SYSTEM.

Is a combination absolutely essential to the making of a first-class production, and all of these are for sale, but never by the "Lowest Bidder".

WE ARE PREPARED TO FURNISH ALL OF THE ABOVE.

W. M. WATTLES & CO., INCORPORATED.

GRANITE AND STATUARY.

WHOLESALE.

BRANCHES AT
BARRE, VT., QUINCY, MASS.,
CARRARA, ITALY.,
THE ALLENVALE GRANITE WORKS,
ABERDEEN, SCOT.

GENERAL OFFICES 38-42 ST. PAUL, NORTH.

ROCHESTER, N. Y.

U. S. A.

making a soldiers monument for the town of Bath, Me. The pedestal and statue of soldier will stand about 16 feet in height.

Monuments to deceased priests are naturally sought for with unusual interest by dealers, as a successful piece of work of this kind not infrequently leads to many good orders in the parish. Kelly & Flynn of Baltimore, Md., have recently finished such a monument in Bonnie Brae Cemetery, that city, for the congregation of the late Rev. Peter McCoy. The monument is of the canopy style and is surmounted by a full life-size statue of "St. Mary, Star of the Sea." The crowned figure is represented as if in prayer, with one foot resting upon the head of a serpent. With the exception of the bottom base the monument is of Italian marble. It stands 14 feet 6 inches high.

If you have anything to sell to retail marble and granite dealers advertise it in the January number of the MONUMENTAL NEWS and you will reach the entire trade of the United States and Canada.

W. H. Perry's patent design suits are expected to come to trial at the present session of the United States court at Dover, N. H.

In reply to the question, "What is the popular idea of to-day respecting monuments," propounded by a local reporter, Mr. Alex Mattheson, is quoted by the Grand Rapids *Democrat* as follows: "Where formerly people almost revered the colossal and emulated the example of Pharaoh to stupendousness they

Just received several cargoes of Swedish Hill O'Fare at Aberdeen. W. C. Townsend & Co., or Townsend & Townsend.

If You want a few good ITALIAN STATUES for spring, ask for sheet just out. E. C. Willison, Boston or Chicago.

The wrong way to buy Statuary is the "cheap" way. You may strain at a dollar and swallow a poor job. MacFarland has his own Studio and does the best work.

are now becoming more Parisian and Italian in taste and seek the exquisite and artistic. The modern idea appeals more to our æstheticism and sense of art and display itself in the delicacy of the monument and the beauty of its design. This idea carried out will make the cemetery a thing of beauty instead of an aerial collection of grim and unsightly obelisks that would frighten instead of moving us to reverence or admiration. Nowadays, people of good taste avoid the stupendous and buy only the delicate and beautiful."

The New England Granite Works at Westerly, R. I., are cutting a sarcophagus monument for the grave of the late Samuel Tilden at New Lebanon, N. Y.

To the Trade.

Milne, Clarihew & Gray beg to announce to the trade that Clarihew & Gray having bought W. S. Wyllie's interest in the Milne & Wyllie quarry, located at Barre, Vt., that in the future said quarry will be known as the Milne, Clarihew & Gray quarry. They invite all dealers desiring the best dark Barre granite in the rough to give them a trial. They hope, by strict attention to business, to merit a share of public patronage. All orders addressed to Milne, Clarihew & Gray will have prompt attention. Any one desiring a personal interview will find the firm's office at Clarihew & Gray's stone sheds.

Swedish Hill O'Fare is one of the finest grain granites ever imported. Wm. C. Townsend & Co., or Townsend & Townsend.

Procure Our prices on Imperial Blue Pearl, Red Agate, Red Swede and Red Scotch. All Granite guaranteed. Wm. C. Townsend & Co., or Townsend & Townsend.

Never take bluffs on prices for Statuary. Write for ours before placing orders. A word to the wise from New York Granite Co., 67 W. 23rd Street, New York.

There are comparatively few monuments in the United States on which there are portrait statues of living men, as most



men prefer to have this sort of thing done after they have shaken off this mortal coil. President Von der Ahe, the St. Louis base ball player has had himself perpetuated in granite and so has James Netherwood of Richmond, Va., the well known contractor, whose full size figure surmounts a polished column in a Richmond cemetery. The latest monument of this kind is that made for Dr. Acomb of Warren, Pa., which we illustrate herewith. In addition to the full length portrait statue of the doctor, which

surmounts the pedestal, there are four portrait medallions, carved on the granite cap, of Mrs. Acomb and three boys, which is a unique feature in family memorials. The dimensions are as follows, bottom base 6' 0" x 6' 0" x 1' 8", 2nd base 4' 10" x 4' 10" x 1' 5", die 3' 8" x 3' 8" x 2' 8", cap 3' 2" x 3' 2" x 1' 10", statue 6' 4". The cap and statue are of Westerly granite and the balance of the monument is dark Quincy granite. Mr. J. O. Messerly of Warren, the contractor, says the monument is a first-class piece of work and quotes the doctor, as being well pleased with himself in granite. Mr. Messerly is putting up some good work and is a firm believer in doing well what is worth doing at all.

H. C. Hoffman & Co., Chicago are the contractors for the monument to be erected in one of the Chicago parks in memory of Benjamin Franklin. It is understood that the pedestal will be of Barre granite surmounted by a bronze portrait statue now being modelled by R. H. Park of Chicago.

Reavis, Belcat & Co., of Princeton, Ind., have been very successful in securing contracts for monuments to be erected on the Chickamauga battlefield by the State of Indiana. Their tenth order for work of this character is for the 72nd regiment.

Religious Figures guaranteed works of art and shipped promptly. Wm. C. Townsend & Co., or Townsend & Townsend.

Write E. C. WILLISON, BOSTON OR CHICAGO, for cuts of NEW BALL MONUMENTS just out.

Some dealers don't have a very high standard. A buyer whose art education was acquired at a desk and whose wide experience excuse the word experience—was gained in a few months may not be so very exacting as to the quality, in fact, may not know. Good work costs good money.

Moral—Try MacFarland.

The monument will have three bases, two dies and an ornamented cap. The bottom base is 7' 0" square and the entire height of monument 16' 4". It will be made of Bedford limestone.

Mr. Charles Grassle of Baird & Grassle, Kirksville, Mo., was in Chicago last month. Mr. Grassle is interested in establishing a new cemetery in his town, which is to be conducted on modern ideas.

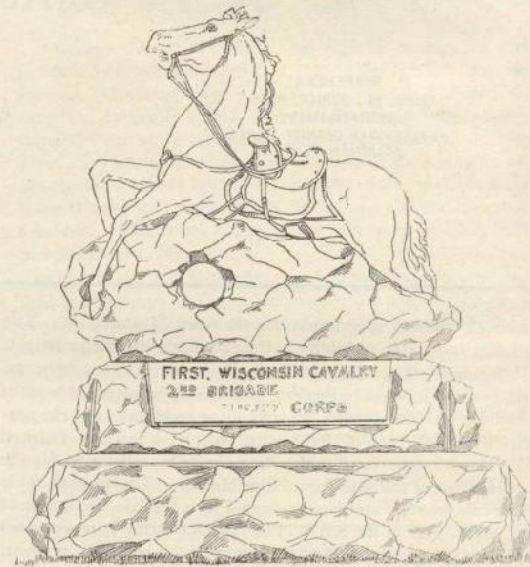
J. W. Kidder & Co., Port Chester, N. Y., write that they have had quite a busy summer and fall trade. They have some nice orders booked for spring delivery.

Do not wait until the next year to make your good resolutions. If you are going to reform begin now and maybe the New Year will find you a better man.

O. E. Clay, formerly in the retail trade, has gone on the road for the R. C. Bowers Granite company of Montpelier, Vt. He will travel as far west as Ohio.

From our regular correspondent.

BARRE LETTER.



The year that is now drawing to its close will form one of the brightest pages in the, as yet, unwritten history of Barre. A record of noteworthy happenings in the granite trade during the past twelve months would demonstrate to the entire satisfaction of Barre's most enthusiastic prophets, that the predictions made in reference to the growth of the granite business were surely being verified and no previous years have made greater strides in that direction than this. In the volume of shipments, the size and character of work executed, number of concerns engaged in business and number of work men employed, 1895 surpasses all previous years.

Gratifying and important as these facts are to the manufacturers, who are making Barre's history, few of them stop to

MILNE, CLARHEW AND GRAY.
SUCCESSORS TO — MILNE AND WYLLIE.

**CLARHEW
& GRAY,**

MANUFACTURERS
OF

**QUARRIERS OF DARK
BARRE GRANITE,
ROUGH GRANITE
FOR THE TRADE.**

**DIES, CAPS AND
BASES, SQUARED
AND POLISHED.**

Cemetery Work in granite. Being fully equipped with Quarrying, Cutting and Polishing plants, and all latest improved machinery, including Pneumatic tools. We invite all dealers desiring First-Class work, to correspond with us.



Portion of entrance to Vault in Woodlawn Cemetery, N. Y.

TAKING THE LEAD

For High Class Work. **Hammered and Carved
Light Barre Granite.**

This illustration represents the possibilities of carved work in our White Granite. The product of our quarries is second to none. Its superiority is conceded by those familiar with it. We can refer to the best work in the largest Eastern Cemeteries. Dimension stock of all sizes shipped on short notice.

Always specify **Tayntor's White Granite** for your fine carved and hammered work. Order rough stock direct from us.

C. E. TAYNTOR LIGHT, MEDIUM,
& **CO.**, Producers of the best **AND DARK BLUE
BARRE GRANITE,**
BARRE, VT.

think of what it means to them and how this ever increasing demand might be turned to better purpose than it is, by stiffening prices and otherwise taking a higher stand than that occupied in the past. One of the unmistakable signs of advancement in the character of work for which Barre granite is being used is to be seen in the number and character of fine mausoleums now being cut. Never before has there been so much of this class of work executed as during the past few months. Some idea of what is being done just now in this direction may be had from the bare statement that Chas. H. More & Co. are engaged upon seven vaults, the American Granite Co. have orders for six, C. E. Tayntor & Co. four, Barclay Brothers two, and doubtless there are several others not reported, and in addition to this there is an exceptionally fine class of monumental work under contract.

Overtime has been the order of the day, or we should say night, for sometime past at Chas. H. More & Co.'s big plant at Montpelier, where a large force of men are doing their best to get out the fall delivery work. Orders for seven mausoleums ranging in cost from \$2,500 to \$20,000 for the granite work, were on this concern's books the first of last month. The most important of these is for the widely known Milwaukee brewer, Valentine Blitz. It is being made from designs by Architect Fink of Milwaukee, and will be when completed one of the best constructed vaults ever built. Every assurance of permanence is seen in the massive stones used in its construction, while in the external treatment of mouldings and carved ornamentation the architect has been unusually successful. Two monuments of more than passing interest are being made by Jones Brothers, one of these is the pedestal for the John Boyle O'Reilly monument soon to be erected in Boston. The lower courses are of pink Milford, Mass., granite, they serve as a pedestal for an ideal group in bronze which is to stand in front of an elaborately

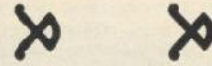
NEW YORK GRANITE CO.

67 WEST 23RD STREET, NEW YORK.

BARRE GRANITE	DARK, MEDIUM & LIGHT
HARDWICK	
SOUHEGAN	
MILLSTONE	
POINT, CONCORD.	

Lowest freight rates to all points.

BARCLAY BROTHERS,



Quarry Owners, Manufacturers
and Polishers of . . .

BARRE CRANITE.

We own and operate **Light and Dark** quarries that are producing first-class dimension stock of any size. Our facilities for Quarrying are unsurpassed, and orders for

Rough Stock

will receive prompt attention. Our manufacturing department is equipped with Pneumatic Tools for surfacing, carving and lettering granite. Our new surfacing machine is the latest and most valuable improvement ever made in granite working machinery, and gives more

Satisfactory Results

on large surfaces than when finished by hand. Our Column Cutting Lathes and Polishing Lathes are the largest in Barre, and our polishing mill is equipped with thirteen polishing machines. *We have every convenience for handling LARGE WORK.*

CAPS, DIES, Etc., Polished for the Trade.

BARRE, VERMONT.

carved die of Barre granite measuring 9' 6" x 7' 6" x 2' 6". In one face of the die is a niche designed to receive a bronze portrait bust of the gifted poet, in whose memory the people of Boston have commissioned Daniel Chester French the sculptor to rear this beautiful memorial. The pedestal for the William Henry Harrison monument at Cincinnati is also nearing completion here. The bottom base is 22' 0" x 15' 6" cut in six pieces, the die is 12' 6" x 4' 0" x 6' 2" and the entire height of the pedestal 13' 0". On this is to stand Rebisso's equestrian statue of General Harrison. Legner & Quaing of Cincinnati, are the local contractors for this work.

Jones Brothers are hopeful of getting into their new and commodious establishment early in the new year. Among a number of important contracts completed this fall by the American Granite Co., is the monument for the First Wisconsin Cavalry to be erected in the National Military Park at Chickamauga. A general idea of the design may be had from the illustration accompanying this letter. The base is 9' 6" x 6' 6" x 2' 0" and the entire height to top of horse's head is 11' 6". The riderless horse is well executed and by its spirited position fills its own pathetic story. The bridle and bit are of bronze. Monuments for the 3rd Wisconsin Battery, 3rd Brig. 3rd Div. and for Battery E, Pennsylvania Volunteers, Geary's division are also being cut by this company. The latter monument has a rock faced pedestal with castellated cap surmounted by a Parrot gun draped with the American flag, all cut in granite. Bronze cannon balls, and anchors are ornamental features at the corners of the die. A receiving vault for Oil City, Pa., cemetery and several large private vaults for western points are among the other contracts in hand by this company. Heavy work is always in evidence at C. E. Tayntor & Co's. At the present time several large vaults are nearing completion. One of these is a receiving tomb for Homewood cemetery, Pittsburg, Pa. It

is 27' 6" x 22' 0" and will have a capacity for thirty-two bodies. The design is original with this company and embodies some very ornate features. Most of the monumental work turned out here is hammered and carved and the fine character of the work is certain to do much towards popularizing light Barre granite for such purposes.

The record of immunity from fire which our granite works have enjoyed so long, was broken on the evening of October 29, when the plant of the well-known Vermont Granite Co., was found to be in flames. Though the buildings were of slight construction and as dry as tinder, the prompt and well-directed action of the fire department soon gained the victory. But little damage was done to the boiler and machinery, and only a few hundreds of dollars worth of stock was damaged. The larger part of the cutting sheds, however, was partially destroyed, though temporary repairs now being made will enable them to be used in the meantime. The insurance was ample, and has been satisfactorily adjusted.

Barclay Brothers have some heavy work in progress, including two large vaults and a canopy monument. The latter is similar to the well known Cuyler monument. It will have a base 12' x 9', six columns with Ionic capitals rise from the third base and support a handsomely molded and carved cap. The design of one of the vaults is monumental in appearance. It measures 13' 6" x 14' 6" on the ground and 26' 6" high. The roof stone that forms the ceiling of the main room is 10' 0" x 10' 0" x 2' 0". An ornamental roof above this finished with a polished ball 3 feet in diameter gives an added height of 12 feet above the first roof stone; a cluster of three columns with carved caps adorn either side of the entrance. The exterior is all fine hammered and the interior is to be elaborately finished in marble.

Big boulder monuments continue to be in demand. Wells

Lamson & Co., recently shipped one that measured 9' 0" x 7' 0" x 4' 6". Diagonally across one face is a large cross, raised eight inches and on this are ivy and passion vine intertwined in a most natural manner. Some of the leaves on the cross are raised fully three inches. A large raised and polished scroll affords a suitable space for lettering. They have several good jobs on hand, one of them—a heavy static monument, gave proof of the skill of their workmen to execute fine work of this order.

On November 1st the well known firm of Milne & Wyllie became a thing of the past and the new co-partnership of Milne, Clarihew & Gray became an established fact. The readers of the MONUMENTAL NEWS are familiar with the parties to this important deal, as they have been constant users of the advertising columns of this journal. The growth of both these firms from small beginnings to an enviable standing in the trade is the result not of fickle fortune, but of unremitting labor and constant attention to those matters of detail that always bring success. Since acquiring the quarry property by Milne & Wyllie it has been under the management of Mr. Milne and its development into one of the best properties on the hill forms an interesting chapter in local history. It will hereafter be operated as the Milne, Clarihew & Gray quarry, the business conducted under this firm name being exclusively that of disposing of granite in the rough. Clarihew & Gray will continue separately in the manufacturing business at their well equipped plant where they have their own polishing mills, pneumatic tools, etc. They have given employment to between thirty and forty cutters during the summer and fall and enjoy the reputation of furnishing a good class of work. Elsewhere in this paper will be found an announcement to the trade in regard to the company.

Marr & Gordon have completed the Chittenden memorial upon which they have been engaged for several months and



Our No. 546, 3-0 high.

ITALIAN STATUES AND MONUMENTS.

AT THE LOWEST
MARKET PRICES.
EACH FIGURE
GUARANTEED A
WORK OF ART.
SECURE OUR PRICES.

WM. C.
TOWNSEND
& CO.,
5, 7, 9 and 11 Main St.,
JANESVILLE, OHIO,
OR
TOWNSEND
AND
TOWNSEND,
138 Fifth Ave., near 19th
St., New York City.
STUDIOS AT
CARRARA, ITALY.

POINTS ON GRANITE

.... NO. 40

DO YOU REALIZE,
that in order to suit the diversified taste of your customers, it is absolutely necessary that you carry in your well selected stock of monuments, that rich, purple shade of Rose Swede Granite, which has everywhere met with popular approval?

We can supply you. Try us

Jones Brothers,

MAIN OFFICE, 55 Kilby St., BOSTON, MASS.
Western Office: Tacoma Building, Chicago, Ill.
Foreign Office: Palmerston Road, Aberdeen, Scotland
Quarry and Works: Barre, Vt.

Georgia Marble

We are busy, and a busy man is the fellow to trade with.

Do you meet delay in getting your orders filled? If so try us. Remember we are on the ground and select your orders from the largest stock in the south.

You get the best and you get it quick. In dark stock we supply the choicest. We are now having a run on fine Gray Creole, even in color there is nothing in the market handsomer.

Try an order of our fine gray. Write us for estimates on finished work, it will pay you.

GEORGIA MARBLE FINISHING WORKS
CANTON, GA.

which now marks the resting place of the first governor of the Green Mountain State at Williston. A miniature illustration of the monument appeared in these columns a few months ago, but conveyed a very imperfect idea of the design or workmanship. The design is by a California architect whose suggestions for decorative panels have been well carried out in the granite after models by Beattie, of Quincy. A full rigged vessel, a portrait medallion of the governor, and the seal of the State are exceedingly well done and not the least attractive feature is the inscription panel on which a biographical sketch of the governors is given, in raised and rounded letters.

The fact that a receiver has been appointed for the Producers Granite Co., must not be interpreted to the prejudice of that company. Its financial standing is in no way affected; but some of the stockholders desiring to withdraw to form another company, and being unable to arrange the terms to mutual satisfaction, this method of arbitration was adopted.

E. L. Smith & Co., have a large monument nearly ready for shipment to Cleveland, Ohio, the die of which will be capped by a huge crouching lion, a very spirited figure, as we saw it under the hands of carver Marchiasì.

The Oberlin, Ohio, soldier's monument to which we have referred before, is nearly ready for shipment. Though not one of the largest, it is a very neat and appropriate design, and finely executed.

Quite an important contract has been awarded H. G. Kolten, who is now making Barre his permanent home for a monument to be erected by the famous Philadelphia brigade on the battlefield of Antietam. The design calls for a plain shaft monument resting on a base 14 feet square and rising to a height of nearly 70 feet. The estimated weight of the finished work exceeds 161 tons.

William Marr of Marr & Gordon, returned from Scotland last month.

James Reid of Stephens & Reid, has disposed of his interest in the firm to Alex. Stephens. Negotiations are pending between the latter and another concern who operate quarries, which may result in a new company being organized.

E. Wilmot Cummings, a highly respected citizen of Barre has been appointed correspondent of the MONUMENTAL NEWS.

From our regular correspondent.

QUINCY, MASS.

A man representing himself as F. M. Barlow, a granite dealer at 54 E. 123rd street, New York City, tried a little swindling game here last month, but found our manufacturers too smart for him. He visited the office of E. J. Qualey & Co., South Quincy, and bought monuments, which he ordered to be shipped by the Metropolitan line of steamers to the address given above, paying for them by a 30 days note. His very apparent ignorance of the granite business led Mr. Qualey to suspect him of being a fraud, and before shipping the goods he wired for information to Acting Chief Conlin of New York and Mr. Golden of the firm of Golden & Co., whom he had given as a reference. Neither party knew anything about Barlow, and Chief Conlin wired that the man had no office at 54 E. 123rd street. Mr. Qualey did not ship the goods, and he immediately informed the manufacturers, where Barlow had ordered work, of what he had learned. No goods were shipped to Barlow, but several manufacturers are holding his notes.

The work of the bush-hammer thieves, who were reaping such a harvest among the different sheds, was brought to a close by the arrest of two of their number last month. Since then no more thefts have been reported. The hammers are worth from \$5 to \$8 each, and as the loss fell wholly upon the cutters, there was considerable anxiety felt among the workmen over the

safety of their tools while these depredations were going on. The most of the hammers were found in the Boston pawn shops, and it was while the thieves were disposing of them that they were arrested. They were bound over to the grand jury and will be tried this month.

Mr. James Thompson, the president of the Quincy Manufacturers' Association and member of the firm of John Thompson & Sons, was elected to the Massachusetts legislature at the last state election by one of the largest votes ever cast for representative from this district. Mr. Thompson is universally popular, and the strong support he received from the laboring classes was very flattering. He is an earnest and honest worker and with his ability as a debater, so well demonstrated in Quincy's city council, he will be an able and honored representative for this city and its leading industry.

Shipments of granite last month from South Quincy, 4-525,166 pounds; from West Quincy, 8,374,401 pounds, and over the Quarry railroad, 27,993,363 pounds. This is probably one of the largest monthly shipments ever made. It took 761 cars to handle the output from the quarries along the Quarry railroad and it was necessary to keep night and day trainmen at work.

Elcock & Sons are cutting a large vault from a choice selection of stock from their quarry.

Wm. T. Spargo has got the contract to build a soldiers' monument at Middleboro, Mass. The design is an original one by him and was accepted by the committee out of a number submitted. It will be of Quincy granite and will consist of 5 bases, die, column and capital, the whole surmounted by a heroic figure of "The Standard Bearer," 10' 6" in height. The bottom base is 9' x 9', with 1' 4" rise. On the corners of the fourth base, which is octagon in shape, are placed cannon balls, and above these on the fifth base is inscribed "Liberty and Union."

At a meeting of the board of directors of the Granite Railway company, Monday, Nov. 18, Mr. Henry E. Sheldon, the general agent of the company, handed in his resignation. This step Mr. Sheldon explained was necessary owing to the condition of his health and his desire to give up active business life for a while to take a long needed rest. But the directors appreciating the great value of Mr. Sheldon's services refused to accept his resignation and voted him a leave of absence instead. Mr. Sheldon entered the service of the company twenty-five years ago in the company's shops at Concord, N. H., where he learned the trade of granite cutter. He was appointed agent in 1877, succeeding his father, the late Oliver E. Sheldon, who had filled that position for the preceding twelve years. Mr. J. Alfred Simpson, the treasurer of the company, will act as agent during Mr. Sheldon's absence.

Mr. Marshall P. Wright, the superintendent of the O. T. Rogers Granite Co., is not very enthusiastic over the "market prices" just now, but predicts a better and a stronger market for the spring work. The quarry is in excellent shape for getting out large stone; many improvements being made the past year by clearing away the grout and widening out the hole.

"We've got considerable work ahead," said Mr. McDonnell of the firm of McDonnell & Sons and I guess that we can keep our regular men at work all winter. "Are prices good? Well, I'd like to see them better of course, but then I can't complain much. Prices will always regulate themselves and although the granite manufacturers throughout the country are working at starvation prices just now, times will be better soon there is no doubt about that and everybody will be willing to stand a little advance." The Quincy manufacturers will that's sure. McDonnell & Sons have rebuilt their long cutting sheds on the easterly end of the plant.

A Marnock & Co., are winding up their fall orders but have enough work ahead for some time. Prospects are good for con-



TO THE TRADE;

I am now being equipped with the latest improvements for finishing in the **best** possible manner. Carving, lettering and tracing by **Pneumatic Tools.**

I aim to ship the class of work that gives satisfaction to all concerned. I handle only the best grades of stock, give strict personal attention to business and guarantee all work to be of best material and workmanship.

Good Stock. Good work, prompt shipments and fair prices. Address for Estimates

S. Henry Barnicoat

QUINCY, MASS.

siderable spring work. An all polished fine monument 30 feet high with a 5' x 5' bottom base is a very handsome job in Quincy granite they have just completed. It goes to Allegheny, Penn. They are also cutting two draped urn monuments 4' x 4' bottom bases.

Mr. P. W. Driscoll, agent of the Merry Mount Granite Co., reports an influx of spring orders on which he will begin work about Jan. 1st. Until that time he has got enough to keep all of his men busy. He has no cause to complain he said about the years business but expects a great increase next year from present indications.

Mr. John Q. A. Field, of the firm of Field & Wilde, and well known as the president of the Granite Manufacturers Association of New England, is a candidate for the city council of Quincy, and everybody hopes to see him elected. What is wanted is more business men and a few granite manufacturers in that body.

McGillvray & Jones are quarrying the last two stones for their big tomb. As these stones are over 15 ft. in length and only one foot thick, they will be rather delicate things to handle. This firm stand very high among the trade on tomb work.

F. Hardwick & Son, have had a good trade, on rough stock especially, the past year and their quarry was never in better shape than at the present time. They are at work on two large monumental jobs.

Richards & Trowbridge are designing a \$25,000 mausoleum of Ionic order. It will probably be of Quincy granite with an interior of fine marble.

McIntosh & Sons have had no let up to speak of any time during the year, eighteen cutters being employed constantly.

S. Barnicoat is cutting a heroic statue of Liberty, besides having his shed room filled up with statuary and monumental work. His studio is always worth a visit and it is always the one great point of interest to a stranger in Quincy.

Mr. George McFarlane, the proprietor of the Adams Granite Co., had just made fast the tackle of his running derrick preparatory to leaving for home when the MONUMENTAL NEWS man called on him. Mr. McFarlane is a man who always likes to see for himself that everything is right before he leaves for home on a Saturday night, and this precaution of fastening the running derrick was a thing that he is very particular about just now. He has several finished monuments in the yard and he did not want the derrick playing any Sunday frolic among them. He reports the outlook as pretty good.

Mr. A. M. Deane, of the firm of A. M. Deane & Co., says that he had an exceptionally large amount of work ahead at this time a year ago but that couldn't be taken as a basis for general business. He has several good orders pending now and enough of work on hand to last until after the first of the year. The quarry opened this year by him along the line of the Quarry R. R. has been a paying investment since the start and the stone is of excellent quality for monumental purposes.

S. Henry Barnicoat known to the trade as one of the pushers of Quincy granite has some fine specimens of stock and workmanship in his yards at South Quincy. One is a handsome sarcophagus memorial that has brought out much favorable comment.

One of many unique offers of business recently came to Mr. Mac Farland of Carrara, Italy. He has been offered by no less a person than a professor in a large academy and a member of a cemetery board, the entire list of monuments, headstones, etc. from a cemetery, which is about to be abandoned. The professor informed him that the fine sentiments inscribed on the monuments could be utilized and perhaps even names and dates might be used. Mac has left the matter open so if any of his friends are looking for second hand monuments with "the virtues" already inscribed in imperishable lead letters he will close the deal for them.

BURTON
PRESTON
GRANITE AND
STATUARY.
ABERDEEN. BARRE. MANSFIELD.
BURTON
PRESTON

MODERN WORK

AT MODERN PRICES.

SEND TO US BEFORE BUYING.

BURTON
PRESTON

SEND FOR SKETCHES OF A NEW LINE OF
SARCOPHAGHI,

Which can be retailed for \$100.00

The Business Paper.*

ITS TRUE POSITION, AND ITS INTRINSIC VALUE IN BUSINESS MAKING.

The trade paper is a trade necessity.

Business may be run without it.

Business never has been run without it.

The merchant can write his letters on a barrel-head—but he doesn't.

Merchandise can be sent across the continent by mule-power, but nobody uses that motor.

The fact that every trade has from one to a dozen representative papers devoted exclusively to the trade they represent, is prima facie, as well as circumstantial evidence that the trade paper is a part of the economy of business.

I don't own a trade paper.

I never did own a trade paper.

I never expect to own a trade paper.

I have no trade paper interest.

I simply know trade papers.

I am writing what I know.

A bank president in Boston can't write more than his name, but his ignorance didn't make him a bank president.

There are men who don't read the trade papers and succeed, but so long as the ninety-and-nine read trade papers, and are successful, there is no need of discussing the peculiar composition of the one man who makes money, and reads nothing.

The trade paper is a commercial clearing house, with members entirely confined to its particular trade.

It is more than a clearing house, it is a typographical business club, and into its arena is thrown the thought of the trade.

It is a printed show-room, where everything new, and everything interesting, are placed before the reader, for the reader's benefit.

*Copyrighted 1885, by Nathan C. Fowler, Jr., D. P.

MODERN AND PRACTICAL
PHOTOGRAPH DESIGNS.

W. E. JONES, RUTLAND, VT. MAKER AND DEALER.

SIZE 4 by 7 on 8 by 10 cards, \$3.00 per dozen. SIZE 8 by 10 on 10 by 12 cards, \$4.50 per dozen. DIMENSIONS furnished with every design. SATISFACTION guaranteed. DEALERS who use Jones's Designs, say business is booming. And why? BECAUSE they show their customers good designs, whereby they prove themselves to be up-to-date dealers. SAMPLE designs 25 and 45 cents.

The good trade paper civilizes trade—spreads trade—increases trade—makes trade honest—disarms unnatural competition, tends to raise cold-blooded business up to the fraternity of social decency.

The man who reads a trade paper may not be wise, but I never knew a fool to read a trade paper.

The trade paper reaches into general trade, and abhors that line of business which is pertinent to the class it illustrates.

The trade paper gives to the reader that which he wants—it is a sort of sieve through which only can pass words of business interest.

The reason that trade papers carry advertising is the same reason that magazines and daily papers carry advertising.

The first-class trade paper has just as much right to devote a part of its pages to advertising as has the magazine or story publication.

The advertising in a trade paper is as interesting as the reading matter, for the advertising pages present the names and addresses and other business information concerning the most enterprising business men in the trade represented.

A man can do business without advertising in the trade paper, but the fact that comparatively few men of enterprise do not advertise, indicates that the advertisement in the trade paper has money-bringing and trade-increasing value.

The progressive manufacturer or wholesaler realizes that while the circulation of the trade paper may be small, every copy goes into the hands of a probable customer.

A paper with a circulation among one thousand probable customers is worth more than the circulation of a paper with one hundred thousand among possible customers unless the one thousand probable customers are included in the one hundred thousand possible customers.

The only people who read THE MONUMENTAL NEWS are people who earn their living, making, distributing and retailing particular lines of goods.

They are not only interested in the news of their trade, but they are very anxious of considering any one who supplies the goods they sell.

The advertisement in the trade paper may not bring more than one answer a month, perhaps not more than one a year, but one answer may be the beginning of a trade which will pay for the advertisement ten times over.

There are a thousand reasons why a general magazine need not be read by business men, but the sun never shone upon a

LONDON.



SYDNEY.



ABERDEEN.

CARRARA, HOME OFFICE AND STUDIO.

MAC FARLAND'S WORK-- MONUMENTAL AND STATUARY.

WE do not make all the work we sell, no dealer ever does—jobbers and middle men do not make a single piece.

WE have our own Studio, equipped with every convenience. Since we are manufacturers we guarantee three things—**beauty, durability, price.**
COMPETENT, experienced artists to execute a **high order** of work.

A QUARRY of splendid, clear, strong, marble.

THE opportunity to order from **first hands**, and to avoid middle men and jobbers, they affording you **lowest** prices.

WRITE FOR ESTIMATES.

S. A. MAC FARLAND,

874 BROADWAY,

NEW YORK.



VERMONT GRANITE CO, (INCORPORATED)

Quarriers of the Celebrated **BARRE GRANITE**

Manufacturers of Monumental and all kinds of Cemetery Work for the Trade.

Special attention given to Squaring and Polishing Dies, Caps, Bases etc., and shipping Unfinished Dimension Granite in the Rough a Specialty.

All Branches of the Work are Done in Our Own Shops.

BARRE, VT.

BROWN BROTHERS. MANFRS' OF

Monuments

AND GENERAL **Cemetery Work** FROM THE BEST

BARRE GRANITE.

Correspondence solicited.

Barre, Vt.



HOFFER & HOFFER,
SCULPTORS.

Artistic Carving

and General Cemetery Work.

BEST GRANITES

in the market.

BARRE, - VERMONT.

reason why the man who sells granite and marble monuments, etc., should not read systematically and carefully the paper which represents the trade of his living.

He reads the trade paper, and as he isn't a fool, he reads the advertising pages as carefully as he reads the reading matter, for the business man knows that the advertising pages will present to him ways and means of increasing his business, and of making more money.

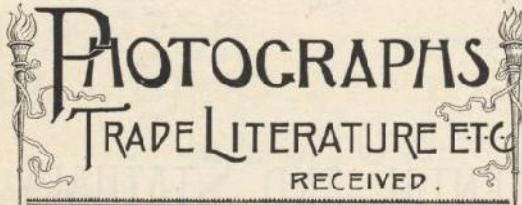
The man who does not believe that people read trade paper advertisements is advised to print at the bottom of his advertise-

ment, in the smallest possible type, the statement that he will present a yellow dog, or a rosewood piano, to any reader of the paper who sends for it.

The best advertising in the world is the advertising that strikes men squarely between the business eyes.

The trade paper contains nothing but business—it is the one great business-bringer of wholesale publicity.

There is something the matter with the businessman who can't build business better with the business assistance of business papers.



Photograph of an Italian Monument (illustrated on page 750) from Mr. S. A. MacFarland.

W. E. Jones, dealer in photographs for the trade at Rutland, Vt., has sent the MONUMENTAL NEWS several good examples of his work.

E. T. Barnum, Detroit, Mich., has issued a fall hardware supplement to his large and complete catalogue issued last spring. Readers of the MONUMENTAL NEWS who are interested in wire and iron work can have one of these catalogues by writing for it and stating the class of work they are interested in.

The F. R. Patch Manufacturing Co., of Rutland, Vt., manufacturers of all kinds of marble and stone working ma-

chinery issue an illustrated catalogue of their various machines, saws, hoists, derricks, etc. In addition to the information in regard to their specialities, there are a number of tables, weights, etc. that gives an added value to the book. Interested manufacturers may receive a copy on application by mentioning the MONUMENTAL NEWS.

The Banker's Directory.

It will be hard to find in Rand, McNally & Co.'s Banker's Directory where any improvement can be made, and its contents seem to fill the bill of completeness full. The indexed colored county maps of each State and Territory, the Provinces of Canada, and principal cities, are 11 x 14, and printed from new plates, full of information and corrected to date of publication. The banking intelligence is revised and listed in such a way as to save time. The attorney's list has received much care. A list of towns in Canada, accessible to banking points, has been added the U. S. list, and combined provides a fund of information to meet any contingency. It also includes a complete list of the cashiers' assistant cashiers in the United States, and the names of Directors in National, State, Private and Saving Banks, and Trust Companies in the principal cities of the United States. The book contains a vast amount of concentrated information invaluable to the business world. The publishers are Rand, McNally & Co., of Chicago.

A. MALNATI.

WESTERLY AND QUINCY GRANITES

ARTISTIC MONUMENTS,

QUINCY, MASS.

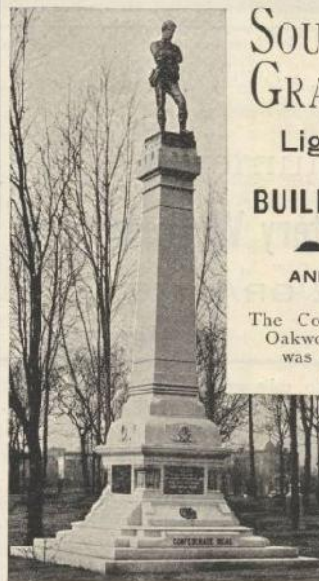


JOHN A. ROWE

Wholesale
Rustic and
Rockface
Monumental
Works

STATUARY
VASES, SETTEES,
CHAIRS,
CURBING,
VAULTS, AND
BASES,
AND SAWED
STONE

IN ANY QUANTITY.
Rustic designs on 11 by 14
paper, \$1.00 per dozen.
BEDFORD, IND



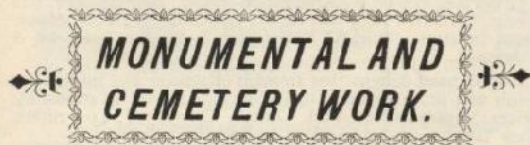
SOUTHERN
GRANITE Co.,
Light Gray Granite
FOR
BUILDING AND
MONUMENTAL
AND STREET WORK.

The Confederate Monument in
Oakwoods Cemetery, Chicago,
was quarried and cut at
our works.

QUARRIES,
LITHONIA, GA.
MAIN OFFICE,
WIGGINS BLD K,
CINCINNATI, O.

C. P. GILL & CO.,

Manufacturers of all kinds of



FROM THE BEST

Light and Dark

BARRE GRANITE.

Special attention given to Squaring and Polishing dies, Caps and Bases, all lettering and carving done with Pneumatic Tools.

Orders promptly filled. Work guaranteed to be first class.

Always get our estimates before placing your order.

Montpelier, Vt.



Bedford Monumental Works.

Wholesale Dealers in

Statuary, Rustic and Rockfaced Monuments, Markers, Vases, Settees, Turned Work, Bases, Sawed and Dimension Stone Etc. Etc.

We make a specialty of

RUSTIC MONUMENTS

which we guarantee to be superior in finish to anything produced in Bedford Stone.

Fine Paris Panel Designs \$2.00 per dozen. Send your tracings for estimates.

Lock Box 465,

Bedford, - - Ind.

Why is Chester Granite the Best Monumental Granite Known?

1. Chester Granite is fine grained and of a bright dark blue color, free from iron and all other imperfections.
2. Chester Granite is far superior in contrast between cut and polished work, to any other known granite.
3. Chester Granite is hard and close grained, does not discolor by exposure to the atmosphere, but retains its brilliant polish, and it is always a satisfactory purchase to the owner.
4. Chester Granite surpasses all other granites for lettering. No need of paint to make letters readable.

Chester Granite is the best granite on earth for monumental work.

Do not experiment with cheap granite, but buy the best, and that is Chester.

We can furnish rough-stock and squared and polished work with reasonable dispatch.

Chester Granite is handled by all the leading Manufacturers of Quincy, Mass. Send for price-list. Satisfaction guaranteed.

THE HUDSON & CHESTER GRANITE CO.

Owners, Quarrymen and Mfr's,

CHESTER, MASS

KAVANAGH BROS. & CO.



(MANUFACTURERS AND WHOLESALE DEALERS IN)

Westerly AND Quincy Granite

Importers of Scotch Granite and Italian Statuary. We make a specialty of Westerly Granite and Artistic Carving.

So. Quincy, Mass.

New York Granite Co.

67 West 23rd St., New York.

Light Medium and Dark **Quincy**
White Blue & Pink **Westerly**

Polished Granite Columns
in all kinds of
Granites.

x x x x x Hand Designs
a Specialty.

Among Our Advertisers.

Special business notices in this department, 25 cents a line. Readers will confer a favor upon the advertiser and the MONUMENTAL NEWS by mentioning the name of the paper when writing advertisers.

Important to Advertisers.

Advertising patrons of the MONUMENTAL NEWS who desire to avail themselves of our special January number for making announcements to the entire trade of the country, should see that copy for their advertisements is sent in before the middle of the month.

A new set of lithograph designs has been issued by Townsend & Townsend, New York, who are sending them out complimentary to their best patrons in the trade. The designs, twenty-four in number are finely lithographed on sheets 16x22 inches and include a very fine class of monuments and statuary. A conveniently arranged book of sizes and prices accompanies each set.

Stock Sheets of Italian Monuments and Statues sent promptly upon application. A large stock to select from. Wm. C. Townsend or Townsend & Townsend.

Class A estimates on all kinds of finished monumental work furnished free of charge. Open to all dealers who wish the best work and material at the lowest price. Such character of work can be supplied at New York Granite Co., 67 W. 23rd Street, New York.

Red Swede No. 10 is acknowledged the standard Red Granite. Wm. C. Townsend & Co., or Townsend & Townsend, Importers.

Wolf & Co., of Mansfield, Ohio, have recently furnished the Jos. Shaver Granite & Marble Co., of Milwaukee, Wis., with a life-size portrait bust of the president of the company, Mr. Jos. Shaver. It is executed in Carrara marble and from the illustration appears to be a very life like production. A marble group representing "Memory" recently furnished an Ohio dealer is also a very creditable piece of modelling and carving.

Liberal Treatment and Good Work is our strong point. Burton Preston.

Write Us for stock sheets of Quincy, Barre, Scotch, Red Swede, Carnation Red, Red Agate, Imperial Blue Pearl Monument in stock. Wm. C. Townsend & Co., or Townsend & Townsend.

For hand designs that in point of artistic and mechanical finish will prove superior to any furnished and at reasonable prices. Apply to New York Granite Co., 67 W. 23rd Street, New York.

Barre Granite from dark, medium and light stock shipped promptly. Wm. C. Townsend & Co., or Townsend & Townsend.

CORRECTION.

The date in the Marble Statuary advertisement of E. C. Willison, which appeared in the November number of the NEWS should have been November 20, 1895, instead of 1896. Mr. Willison has booked a large number of orders for statuary and will be pleased to hear from any who may have been misled by the error in the announcement.

Middlemen don't lie awake o' nights racking their brains about how to produce good work, everything goes. We know how. Know (12) years more than others and have reliable, experienced men to help us. S. A. M.

Reproductions of Church Figures sent upon application. The best only supplied. Wm. C. Townsend & Co., or Townsend & Townsend.

Your Continuous orders require us to supply first-class work promptly. Room for more orders. Burton Preston.

A very encouraging report of business is made by Burns & Cormack, granite manufacturers at Quincy, Mass. They have a full force of men at work getting out all of the fall work they can attend to. Send to them for estimates on your spring delivery work.

Your Money Refunded if the Italian Statues or Monuments are not satisfactory. Wm. C. Townsend & Co., or Townsend & Townsend.

Long Experience means up to date prices. Burton Preston.

Low Prices named on Barre and Westerly Statues. Wm. C. Townsend & Co., or Townsend & Townsend.

Monumental News.

We enclose subscription to MONUMENTAL NEWS. We could not get along if we did not see it regularly every month and always find it very interesting. J. W. Kidder & Co., Port Chester, N. Y.

Send For our prices on Italian figures and Monuments. Wm. C. Townsend & Co., or Townsend & Townsend.

The advantages of the "Sure Grip" Tackle Block have made it one of the most popular appliances for labor saving in use by marble and granite dealers. There are hundreds of them in use and in many yards, several sizes are kept on hand to meet requirements. The Fulton Iron & Engine Works, Detroit, Mich., are the manufacturers and they will send full information regarding the blocks and their cost.

Westerly Granite Statues furnished at reasonable prices. Wm. C. Townsend & Co., or Townsend & Townsend.

In the announcement of Casey & Sherwood, granite quarriers and manufacturers at Groton, Conn., will be found an illustration of an attractive mausoleum recently erected in Woodlawn Cemetery, New York City, out of their Maine granite. No idea of the fine appearance of the granite can be given by an il-



JONES & GALE.
Manufacturers of
Barre Granite Monuments

of all kinds, . . .
Send for Estimates.
MONTPELIER, VERMONT



LUDLOW SAYLOR - - - WIRE CO.
♦ ♦ ST LOUIS, MO. ♦ ♦
CEMETERY FENCES
of
Wrought Iron and Wire.
Write for Catalogue.

RED BEACH RED GRANITE
BEAVER LAKE BLACK GRANITE

We make a specialty of **ROUGH STOCK, POLISHED COLUMNS** and
PILASTERS, URNS, VASES, BALISTERS and **SAMPLES.**
O. S. TARBOX, Supt. **MAINE RED GRANITE CO., Red Beach, Me.**

LYNCH & McMAHON,



OFFICE AND WORKS **Montpelier, Vt.**

MANUFACTURERS OF
FINE MONUMENTAL WORK
of every description. The collection
our specialty. Quarries at Barre.

BASHAW BROTHERS,
Manufacturers of
HARDWICK GRANITE

Estimates on all classes of
Monumental Work.
HARDWICK, VT

RED GRANITE
Superior to Scotch or
Swede for Monumental
Work.

BRAINTREE RED GRANITE CO.,
Room 59, 28 State St. **BOSTON, MASS.**

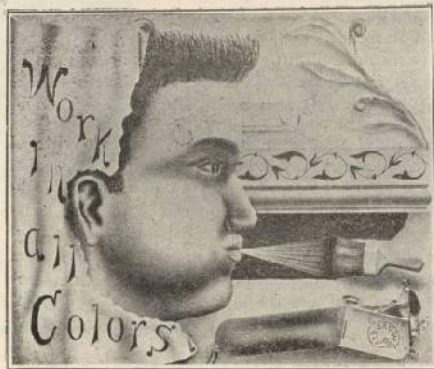
T. A. GREEN,

Light and Dark Hardwick and Woodbury
Granite Monuments, Tablets and Gen-
eral Cemetery Work.

Box 65. HARDWICK, VT.
You will get my estimates by return of mail.

E. C. FRENCH
Manufacturer of and Dealer in
MONUMENTAL WORK
of all kinds from the best

Light and Dark Barre Granite.
Lock Box 90. **BARRE, VT.**



**MONUMENTAL
DESIGNS**
MADE BY
Allen Bros.,

Will secure you orders
for Monumental
work.
Special Designs
a specialty on any material
desired.
Indianapolis, - Ind.
49 Thorpe Bldg.

**HOPKINS &
HUNTINGTON.**

Manufacturers of
**BARRE GRANITE
MONUMENTS and
CEMETERY WORK.**
General
First class work guaranteed.
Write for Prices. **Barre, Vt.**

**RICHARDS &
TROWBRIDGE**

**MONUMENTAL
DESIGNERS.**

DESIGNS on SILK
A SPECIALTY.

QUINCY, MASS.

Correspondence with the
trade solicited.



STAINED-GLASS
**Opal, Venetian
Antique,**

Designs submitted for all forms of Maus-
oleum work. Figure window, Ornamental
Symbolical or heraldic. Correspondence so-
cited. Send for hand book.
Church Furniture and Metal Work
Chancel Renovation; Mosaic Work for
Churches and Residences.

J. & R. LAMB.
59 Carmine St.,
New York City

Trade Among Advertisers. Continued.

illustration, but it will suffice to say that the color and texture of the granite is such as to make it not only desirable as a material, but one that gives pleasing variety by reason of its color. Monotony of color should be avoided in cemetery memorials of every kind and the introduction of this colored granite is exceedingly desirable for this reason. Contractors who are doing any heavy monumental work should communicate with Casey & Sherwood and become informed in regard to this granite.

Dealers will advance their own interests by investigating our listing blocks. We also solicit your tracings upon which to submit prices. New York Granite Co., 67 W. 23rd Street, New York.

Have you read the answers to the question "Why is Chester granite the best monumental granite known?" If not do so, they are given on another page. You can get more information on the subject by addressing the Hudson & Chester Granite Co., Chester, Mass.

Dark Barre Stock well cut is what we give you. Burton Preston.

Medium and Light Quincy at lowest possible market prices. Wm. C. Townsend & Co., or Townsend & Townsend.

Newport granite is often sold under another name. It resembles a popular Vermont granite so closely that it is frequently substituted for it. John M. Hazel & Co., manufacturers of this granite believe in every tub standing on its own bottom and for that reason refrain from likening their granite to any other or offering it as a substitute. Dealers who are not familiar with Newport granite may profit by investigating.

Red Agate the finest grained Red Granite imported. Wm. C. Townsend & Co., or Townsend & Townsend, Importers.

Dark Quincy Granite monuments at reasonable prices. Wm. C. Townsend & Co., or Townsend & Townsend.

Rev. G. E. Hooker of Barre, Vt., has prepared a lecture on "Life at the Quarries," illustrated by a large number of characteristic views, which he has delivered, and by request repeated here and in some neighboring towns. Besides being very entertaining and instructive, it showed clearly that the people in that district needed more and better houses, more perfect sanitary arrangements, and to be better protected against the dangers incident to the work, and was a timely rebuke to the carelessness and selfishness that withholds improvements.

The Howard monument, illustrated in our international edition this month, is a fine piece of monumental work and one to which the contractor, Mr. Philo Truesdell of Port Huron, Mich., points with pardonable pride. The bottom base is 6 feet

square and the height to the top of the highly polished ball is 9 feet 3 inches. The material is red Peterhead granite and the marked contrast between the polished and hammer finished parts materially enhances the beauty of the work. Special models were made for the section that supports the 4-foot polished sphere. The Hon. Henry Howard, for whom the monument was made, was one of Port Huron's foremost citizens and a man to whom the city owes much of its present prosperity.

The gifts of Mr. C. H. Hackley to the city of Muskegon, Mich., now aggregate \$411,000, of which \$200,000 is for library purposes; \$26,000, soldiers monument; \$45,000, park; \$10,000, Hackley park assembly; \$130,000, manual training school. Mr. Hackley's beneficence in a town of the size of Muskegon, shows a public spiritedness worthy of the highest commendation.

Beautifying public places is quite in line with park work, and it is gratifying to record to how great an extent this display of public spirit is showing itself at Great Barrington, Mass. Col. Wm. L. Brown, of New York, who has a country residence there has presented the town with a beautiful drinking fountain. It is about fifteen feet high. The main shaft is of polished Quincy granite and the remainder of dolomite. It is surmounted by a full size bronze figure of a newsboy crying his papers. The fountain is situated in a small park, given in perpetuity to the town by Col. Brown. The statue was designed and executed by David Richards of New York, and the casting was done at the bronze works of Maurice J. Power of New York.

The Shepherd Memorial at Waltham, Mass., is a piece of work by Milne and Chalmers. It is a canopy monument, the bottom base being eight feet square, both lower bases rock face, and these and center pedestal of dark Quincy. The columns are of red Peterhead. The canopy is dark Quincy as well as the heavily moulded plinth. The keystones are of light Barre. The cap seven feet square is of Barre. The whole is surmounted by a twenty inch dark Quincy ball. The total height 20 feet.

A number of people in the vicinity of Lyndonville, N. Y. were recently victimized by a gravestone shark. He represented himself to be an agent for an Eastern granite company and contracted to deliver stones at from a quarter to a sixth less than local dealers. He required the would-be purchasers to sign the contract and pay \$10 down. One of his victims has written to the company who replied that they have no such man on the road. Purchasers of him are now in fear lest the contract turn up in the form of a promissory note. A good moral can be drawn from this.

**GRANITE POLISHERS BEWARE**

Save Money, Save Time, Save Labor

By using Harrison Brothers Diamond Grit, Globules, or Chilled Shot. This is the age that one must practice economy. It will pay every Granite Polisher or Sawyer in the United States to write for our samples and prices of Shot before buying elsewhere. All of our samples are taken from bags ready for shipment, we do not prepare our samples. Our material is durable, clean, and free from all dirt. The largest firms throughout the United States are using our material with the greatest possible success. Address all correspondence (to one of the firm).

NATHAN C. HARRISON, 161 TRENTON ST., EAST BOSTON, MASS.

WE HAVE IT.

What Marble Dealers are Looking for—A firm making a specialty in their line. We furnish rough and sawed bases, cemetery curb and all other work connected with the marble and granite trade. Prices cheerfully furnished and work shipped promptly.

MATTHEWS BROS.,

Quarriers and Dealers in
Oolitic Limestone.

Ellettsville, Ind.

Worth Considering.

We know the difficulties you experience in buying monuments. Poor Stock, Rough Cutting, Bad Joints, Poor Polishing etc. You can overcome these difficulties by placing your orders with

MANUFACTURERS OF
QUINCY,
BARRE,
WESTERLY.

JOSS BROTHERS COMPANY,
(INCORPORATED)
Quincy, Mass. U. S. A. Office and Mills.

IMPORTERS OF
SCOTCH,
SWEDE,
NORWEGIAN.



THE MILFORD GRANITE CO.

MILFORD, N. H.

MANUFACTURERS OF THE

Highest Grade of MONUMENTAL Granite Work.

SELLS EVERY
TIME.

The Beauty of the Milford Granite and our very high class of work is attracting the attention of every one interested in fine Monumental work.

OUR
OWN
QUARRIES.

With **Three Quarries**, all yielding the finest Granite, we are able to quote low prices on finished work or rough stock. Send for estimates to

THE MILFORD GRANITE CO., MILFORD N. H.

DILLON & HALEY,



Manufacturers of

... BARRE GRANITE

Monuments and

General Cemetery
WORK.

BARRE STREET, MONTPELIER, VT.

Estimates cheerfully given. Correspondence Solicited.



Walker AND Glyssen

Manufacturers of
BARRE GRANITE,
Monuments and General
Cemetery
Work.

We will furnish

GOOD WORK

— and —

GOOD STOCK

At Reasonable Prices. Barre, Vt.

Mention Monumental News when writing to advertisers.



**DO YOU WONDER WHY WE CAN
SHIP LARGE BLOCKS SO QUICKLY?**

Look at the illustration of a small part of Virginia's youngest and greatest quarry. All our work is well cut and the stock carefully selected. Rough stock at reasonable prices.

PETERSBURG GRANITE QUARRYING CO., Petersburg, Va.
PETERSBURG GRANITE CO.

The Only Genuine
**MILLSTONE, CONN.,
GRANITE.**
Quarries Opened in 1839.

HENRY GARDINER, Sole proprietor of the

Millstone Granite Quarries

Successors to the
MILLSTONE GRANITE CO.
Firm of Booth Bros., Etc.,
at Millstone.

All kinds of finished Monumental work. Rough Stock a specialty. The certificate of award at the Centennial Exhibition of 1876 on the Millstone Blue Granite, for the good color of the stone, its fine, close grain, and good polish, and the marked contrast between the polished and dressed surfaces; a character which gives unusual distinctness in ornamentation, makes it especially adapted to fine cemetery work.

P. O. Address, —MILLSTONE, CONN. Telegraph and Telephone, NEW LONDON, CONN

—CHAS. F. STOLL—

SOLE PRODUCER OF THE CELEBRATED

For the trade in the Rough, adapted for fine

MONUMENTAL AND STATUARY WORK. P. O. Address,

NEW LONDON, CONN.

GROTON GRANITE

NEW YORK GRANITE CO.

67 WEST 23RD ST., NEW YORK.

ITALIAN MARBLE

ROYAL BLUE PEARL,
RED PETERHEAD,
EXCELSIOR RED,
RED HILL O'FARE,
RED SWEDE.

STATUARY.

—DON'T FAIL TO GET OUR QUOTATIONS—



itself.

POINTS TO ADVERTISERS!

From the *Trade Press* for November "A paper that prints only 500 copies cannot afford to run an advertisement for \$10.00 a page and one that prints 5,000 copies would shut up shop mighty quick on such a basis." And yet this very thing is being done by a monumental trade paper of uncertain circulation in the vain hope of establishing

* * *

More attention is given to the preparation of advertisements in our trade papers to day than ever before, and the result is that many advertisements are read just as regularly as other parts of the paper. This has long been true in regard to magazine advertisements and with the constant improvement in the trade paper announcements, the same desirable condition is coming to be felt in trade circles. This matter of carefully preparing the copy for advertisements necessarily takes time and study and for that reason it frequently does not receive the attention it deserves from advertisers who are content to use a stereotyped form from month to month.

* * *

This method serves to keep one's name before the trade but when we consider that an advertisement that commands attention is read by thousands of buyers whose attention cannot be gained in any other way, the time spent in making advertisements read well and otherwise attractive is never lost.

* * *

"It is the long pole that knocks the most persimmons" and it is the well displayed attractively gotten up advertisement that catches the eye and commands attention.

The financial standing of an advertiser cannot always be estimated from the size of his advertisements, but as a rule it will be found that the most liberal advertisers are those who are doing the most business. As Stewart once said, if a man started in business with a capital of \$500, he ought to invest \$100 of it in advertising. This idea carried out would lead to a liberal policy of advertising and it was just such a policy that aided Stewart in piling up his millions.

* * *

The time is at hand to lay plans for the coming year's advertising. Consider the subject on a purely business basis, portion out what you will require for circulars, cards, office stationery, etc., set aside so much for fakes for you are sure to get into some scheme or other that promises much and does little, and then determine on what you will spend with the legitimate trade papers whose standing in the trade give assurance of keeping you constantly in touch with the best and most reliable dealers throughout the country. Do not scrimp the space you use in such papers, pursue a liberal policy and determine to make the best possible use of the space you contract for and you will not be disappointed in results.

* * *

Talk about big money for advertising, one who knows says that contracts have just been made by *Munsey's Magazine* with four advertisers for the back cover, each to have a quarter of a page for which they are to pay \$6,000 a piece, or \$24,000 for the whole page one year. Mr. *Munsey* knows the value of his advertising space and so do the advertisers, wish we could say as much for some trade paper publishers we know of.

Publishers Department.

THE MONUMENTAL NEWS has established an office in the Home Life Insurance Co.'s building at 257 Broadway, New

York. Mr. Arthur B. Chivers, the manager of the office will be pleased to meet any of the trade from out of town when they visit the city and he hopes in due time to become acquainted with the many patrons of the MONUMENTAL NEWS in and around New York City.

* * *

It has been very truthfully said, that there is but one way of obtaining business and that is by publicity and the surest way to obtain publicity is by advertising. Trade papers are unquestionably the best mediums through which manufacturers can secure the most desirable form of publicity. The eighth anniversary number of the MONUMENTAL NEWS will afford an exceptionally desirable opportunity for obtaining publicity among the various interests identified with the marble and granite business. Our circulation for January will include the entire retail marble and granite trade of the United States and a large number of sculptors, architects and others interested in monumental work. Advertisers will readily appreciate the value of making the best of such an opportunity.

* * *

It occasionally becomes the unpleasant duty of the publisher of the MONUMENTAL NEWS to decline accepting advertisements because of their offensive personalities. We do not intentionally publish any matter in our reading columns that could be regarded in the light of personal attacks on the character or acts of any one and our endeavor is to keep our advertising pages equally free from such objectionable matter. There is nothing to be gained by such advertising and no self-respecting trade journal can consistently give space to it.

* * *

It is very gratifying to announce that the MONUMENTAL NEWS subscription list has received a greater number of new names during the past month than in any

RAILWAY GRANITE CO.
 Manufacturers of
 Barre Granite - - - - -
 Monuments and
 General Cemetery
 Work.
 From the best Light and Dark Stock. Estimates cheerfully given.
 Barre, Vt.

The Date in address on your wrapper tells when your subscription to the Monumental News expires. Renew in good season.

ENTERPRISE GRANITE CO.,
 W. R. Dickie, Prop. Manufacturer of and Dealer in Light and Dark
Barre Granite Monuments.
 TABLETS AND CEMETERY WORK. TERMS CASH. 30 DAYS.
 Superior Workmanship Guaranteed. Barre, Vermont.

BURLEY & CALDER,
 MANUFACTURERS OF
 AND **BARRE GRANITE MONUMENTS**
GENERAL CEMETERY WORK.
 BARRE, VT. ALL ORDERS PROMPTLY FILLED. A TRIAL SOLICITED.

The Practical Granite Co., Montpelier, Vt.
 MN'FRS OF **HIGH GRADE GRANITE WORK**
 LIGHT, MEDIUM AND DARK BARRE GRANITE.
 Exclusively Wholesale. Rough Stock furnished to order. Send for estimates.



F. BARNICOAT.
GRANITE AND STATUARY.
 QUINCY, WESTERLY, SOUHEGAN, MILLSTONE POINT
 GRANITE MONUMENTS. CIRCULAR WORK A SPECIALTY.
 PORTRAIT FIGURES & BUSTS
 MODELLING OF EVERY DESCRIPTION
 SOLDIERS & IDEAL FIGURES
 IN GRANITE.
 SEND FOR DESIGN SHEETS OF GRANITE STATUARY.
 QUINCY, Mass.

West Quincy
 Monumental Works . . .
T. F. MANNEX,
 Mfr. and Dealer in
 Plain and Ornamental
 Granite
 Monuments
 All Work Guaranteed
 Satisfactory
 West Quincy, Mass.



William Callahan,
 Manufacturer of **MONUMENTAL WORK** From all Grades of
 of **QUINCY AND OTHER GRANITE.** of
34 Quincy Ave., Quincy, Mass. Send for Estimates

M. J. McLEAN
 Manufacturer of
 Light and Dark
BARRE GRANITE MONUMENTS
 And General Cemetery Work.
 Correspondence Solicited.
BARRE, VT.

SPARGO MANUFACTURER OF
MONUMENTS - STATUARY,
 and Cemetery Work of all kinds from **THE Best Quincy**
 And other Eastern Granites.
W. T. SPARGO, So. Quincy, Mass.
 Best Stock and Work guaranteed at Lowest Prices.

Maine Granite Quarry,
 Fredericktown, Madison Co., Missouri, solicits your orders.
 Color: Light Pink, suitable for bases for either gray or red granite monuments. Quarry opened July 1, 1894.

MANET GRANITE CO. Estimates given in all
NEW ENGLAND GRANITES.
QUINCY AND WESTERLY
 A Specialty
 Best of Stock and Workmanship Guaranteed. Send for Tracings.
SO. QUINCY, MASS.

Granite Polishing
 For the Trade at the following prices. From the rough (to cut and polish) \$1.00 per superficial foot. From the point, 60 cts. per superficial foot. Extra charges on surfaces less than 5 square feet. **JOHN KLAR,** Westfield, Mass.

previous month for sometime past. Dealers are recognizing the fact that it is poor business policy not to keep in touch with what is going on in the trade. We will begin the New year with a larger paid subscription list than ever.



F. A. Heister,
STATUARY.
Modeling and Carving
 —FOR—
MONUMENTS and ♦♦
 ♦♦♦♦ **BUILDINGS.**
 9 Favor St., Rochester, N. Y.

Workshop Hints.

Two pounds of oxalic acid to two gallons of water, is recommended as a good solution for removing ordinary stains from granite.

* * *

It is convenient sometimes to mark your tools. This can easily be done as follows:—First, clean the place you wish to mark, then cover it with a thin layer of beeswax, raising the edges so as to form a basin. Mark your name in the wax with a sharp instrument, cutting it through to the steel. When this is done, fill the basin with undiluted nitric acid, or aqua fortis, and let it stand a while. The longer it stands the deeper it will cut. Then wash with water.—*Stonemason.*

The granite quarries at Brookline, N. H., from which so much was expected are said to have turned out badly. The granite is fine grained but has too many seams to work with profit. Most of the work has been abandoned.

* * *

The annual report of the Quartermaster General to the Secretary of War, for the fiscal year ending June 30, 1895, shows that during the year 7,340 white marble head-stones were provided to mark the graves of soldiers, sailors and marines buried in national, post, city and village cemeteries. The sum of \$19,454.88 was expended in making necessary repairs to national cemeteries. The total amount appropriated by Congress for the establishment, maintenance and improvement of national cemeteries from their inception to June 30, 1895, has amounted in the aggregate to \$8,165,636.47. This sum has included the pay of superintendents, cost of headstones, monuments, purchase of sites, and construction and repair of roadways. The War Department recently asked for proposals for a gate-keeper's lodge for the National Cemetery at Arlington, Va. This is an addition for which there has been need for a long time.

Upon a lawyer:

"Here lyeth one, believe it if you can
 Who, though an attorney, was an honest man.
 The gates of heaven for him shall open wide,
 But will be shut 'gainst all the tribe beside."

CRYSTAL BROOK GRANITE CO.,

Quarriers and Manufacturers

of the best

Dark Hardwick Granite.

Good Work . . . Reasonable Prices . . . Prompt Shipment.
 Low Rates on Spring Delivery Orders.

Rough Stock . . .

HARDWICK, VT.

**DIXON
 GRANITE
 WORKS.**

Westerly, R. I.

Quarry Owners and Contractors, Designers and Manufacturers of **MONUMENTS, MAUSOLEUMS,**

VAULTS, AND BUILDING Work of all descriptions in

**White, Red
 and
 Gray Granite.**

Estimates given at short notice, Rough Stock to the trade.

STAPLES GRANITE CO.,

Manufacturers of

**HIGH GRADE
 GRANITE WORK.**

Light, Medium and Dark Barre Granite.

Send for Estimates.

Montpelier, Vt.

J. P. CORSKIE,

Dealer in DARK and LIGHT

**Barre + Granite
Monuments**

Orders solicited and promptly filled.
Estimates furnished on application.
Pneumatic tools for lettering and Carving.

Tablets and general Drapery work. Drapery and Carving a Specialty.

BARRE, VT.

IF YOU ARE LOOKING

For manufacturers who will furnish you with first class Monuments, etc., cut from best light and dark Granite send your orders direct to

**Bugbee &
Alexander**

Pneumatic Tools. Barre, Vt.

Flower Vases



Send for illustrated catalogue.

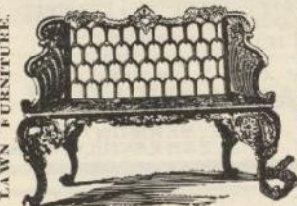


Grave Guard.

Vault Gates, . . .
Fountains.

Reservoir Vases
Mention this Paper.

CEMETERY FENCES



IRON SETTEES

E. T. BARNUM.

Detroit, Mich.



**Park and
Cemetery**

Artistic Adornments,
Iron Vases with Reservoirs,
Bouquet Holders,
Settees and Chairs,
Ornamental Fountains
and Drinking Fountains.
Send for our New Illustrated 1895 Catalogue,
Just Out.

M. D. JONES & CO.,

368 Washington St.,
Boston, Mass.

A. ANDERSON & SONS, Manufacturers of
and Dealers in
LIGHT AND DARK BARRE GRANITE.
Cemetery Work of every Description.

Correspondence with Dealers solicited.
Do not fail to get our prices.

BARRE, VT.

A few stock jobs on hand. Write for designs and prices.

FULLER, FOLEY & CO.

GRANITE WORK OF EVERY DESCRIPTION.

Artistic Memorials

WEST QUINCY, MASS.

STEPHENS & REID,

Manufacturers of
and Dealers in
BARRE GRANITE

Monuments, Tablets, and Cemetery Work.
Polishing and Heavy Work a Specialty.

BARRE, VT.

Round Pond Granite Co.

Formerly Browne McAllister Co.

ROUGH GRANITE of every Description furnished to the Trade.

MONUMENTAL WORK A SPECIALTY.

Estimates furnished on application. All orders promptly filled.

Quarry and Office **ROUND POND, ME.**

COLUMBIA GRANITE Co.

Manufacturers and dealers in
From Souhegan, Milford and New Westerly Granite. For estimates address,

COLUMBIA GRANITE CO., MILFORD, N. H.

La Rochelle & Fanny, Manufacturers of . . .

Concord, Sunapee Granite, for work of every description.

Also quarry owners of the finest
grain LIGHT and DARK

CONCORD GRANITE.

CONCORD N. H.

J. W. McDONALD.

D. W. McDONALD.

J. W. McDONALD & CO.,

Quarriers and Manufacturers of

-- Fine Monumental Work --
Light and Dark Barre Granite.

P. O. Lock Box 97.

Best of Stock and Workmanship Guaranteed.

BARRE, VT.

OLIVER RACINE,

QUARRY OWNER AND MANUFACTURER OF

CONCORD GRANITE, MONUMENTS, &c.,

Cemetery Work of All Kinds.

CONCORD, N. H.

BARRE, VT.

W. D. KIDDER & CO.,

We beat no drums, but we cut first-class monumental work at prices that simply say "We are in it." We use both Light and Dark Barre Stock.

W. D. Kidder.

W. J. Kidder.

Among the bronze works executed the past few months by Bureau Bros., of Philadelphia, are: The doors for the Geo. W. Child's mausoleum, at Philadelphia, on which is some fine chasing; an equestrian statue of General Hancock, erected at Gettysburgh by the firm, from model by F. E. Elwell, sculptor; equestrian statue of Gen. Geo. B. Meade, by H. K. Bush-Brown, Newburgh, N. Y., sculptor. The casting of this horse was something unusual. The horse's head, neck and forebody was cast in one piece, measuring more than ten feet over all, and nearly six feet wide. It was a very successful cast, and perhaps the largest piece of art bronze casting done in the country. It took 3,200 pounds of bronze. The sculptor was highly pleased with the result. Mr. Geo. Bissell's statue of Chancellor Kent, for the Congressional Library, and a statue of "Charity," modelled by J. Massey Rhind, for the P. Walsh mausoleum, Holy Cross cemetery,

Philadelphia, were also executed by this firm whose experience enables them to produce a high class of work.

The Singing In God's Acre.

EUGENE FIELD.

Out yonder in the moonlight, wherein God's acre lies,
Go angels walking to and fro, singing their lullabies.
Their radiant wings are folded and their eyes are bended low.
As they sing among the beds whereon the flowers love to grow,—

"Sleep, oh, sleep!

The Shepherd guardeth his sheep,
Fast speedeth the night away,
Soon cometh the glorious day;
Sleep weary ones, while ye may,—
Sleep, oh, sleep!"

The flowers within God's acre see that fair and wondrous sight,
And hear the angels singing to the sleepers through the night;
And lo! throughout the hours of day those gentle flowers prolong
The music of the angels in that tender slumber song,—

"Sleep, oh, sleep!"



Fraser & Broadfoot

Manufacturers of all kinds of

MONUMENTAL WORK

.... From Best

Light and Dark

... BARRE GRANITE.

Estimates cheerfully given.

Montpelier, Vt.



Wm. Allan,

Successor to Troup & Allan.

Manufacturers of

... Barre Granite.

Monuments and General Cemetery Work,
from Best Light and Dark

... Stock ...

Estimates Cheerfully Given.

BARRE, VT.

Let Us Estimate Any American or Foreign Granite Monument you Have to Purchase.

See our beautiful Designs for Stock Monuments shown by our Salesmen. Order now for Spring and save Time and Money.

EXCLUSIVE WHOLESALEERS OF Granite and Statuary. **F. S. CARY & CO.,** BARRE, VERMONT, OR ZANESVILLE, OHIO

WHITEHEAD &

RIEKERS.

DESIGNERS OF

Monumental & Cemetery.

WORK.

Hand made Designs—Fine work on silk.

STUDIO:—45 West 24th Street, New York, N.Y.

Monument

Photographs.

Finely finished Photographs of the latest productions of Artistic Monuments.

Sample nicely mounted, by mail Fifty-cents,

The Monument Photo Co.,

Box, 513.

TOLEDO, OHIO.

Eclat Granite Co.,



Manufacturers
of . . .
All Kinds of
**MONUMENTAL
WORK.**
STATUARY
And fine
CARVING
a Specialty.
Barre, Vt.

COMMON SENSE

is the mainstay of most business men. But he who has it knows that, while it will use, it cannot take the place of knowledge. So he posts himself. Now the best way for anyone to post himself on the new laws and decisions which may make or break his fortune, is by reading

BUSINESS LAW

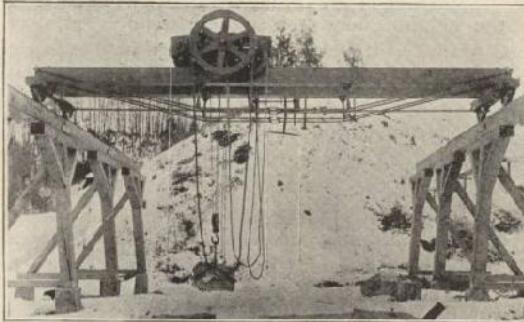
This is the Business Man's Law Journal. It is brimful of money, time and trouble saving information. Try it 3 months for

25 CENTS (Your money back, if wanted, after reading one number).

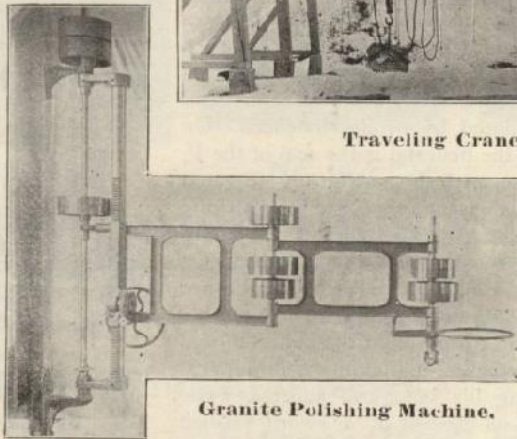
Address, **BUSINESS LAW,**
1021 OPERA HOUSE BUILDING, CHICAGO, ILL.

WHITCOMB BROS Manufacturers of
STONE WORKING MACHINERY

WHITCOMB'S SOFT
METAL POLISHING
MACHINES, COLUMN
CUTTING LATHES,
POLISHING LATHES,
JENNY LIND POLISH-
ING MACHINES,
TRAVELING CRANES,
DERRICKS, CAP-
STANS, ETC.



Traveling Crane.



Granite Polishing Machine.

Barre, Vt.

Quincy, Mass., July 12 '96.
MESSRS WHITCOMB BROS.,
Gentlemen, we note your advertisement in
MONUMENTAL NEWS, when you have a prospec-
tive customer who wants a derrick just tell them
to write to us, we have good things to say about
our derrick bought from you.
Respy, SWIFGLE & FALCONER.

B. C. & R. A. TILGHMAN,

1113 to 1126 South 11th Street,
PHILADELPHIA, PA.

Patent Chilled Iron Globules, or Shot.

For Fast Sawing or Rubbing of Stone, Granite and Marble. OUR SHOT have been in regular, constant and increasing use for over twelve years, and they are now in use by all the leading firms in the United States. With the same machinery and power, they will do over three times the work of sand. We are the inventors and original manufacturers of the material, and our shot have at least double the durability of imitations now on the market. We solicit a competent trial. Speed, durability, economy and saving of saw blades. Reduction of power. Over 600 Customers. Over twelve years constant use.

F. R. PATCH MANUFACTURING CO.,

Rutland, Vt.

Stone Mill Builders and
Contractors.

Stone Working Machinery

a specialty.

Gang Saws, Derricks, Steam
Hoists, etc. Rubbing Beds,
Polishing, Planing and



Moulding Machines for Mar-
ble and Granite. Circular
Saws for Stone, Marble and
Slate.



Correspond with us regarding anything in the way of Stone Working Machinery.

Mention the Monumental News.

The design for the Wilkesbarre, Pa., monument to Washington, to be erected under the auspices of the P. O. S. of A. has been selected. It is to cost in the neighborhood of \$10,000. The pedestal of coral granite will rest on a step of Quincy granite, 12 feet square. On the pedestal just above the steps, are three large shields. The centre one being that of the United States. The one on the left has the seal of Virginia, the third is the seal Pennsylvania. On the obverse side is a large bronze pannel containing the inscription. About the inscription is a cornice, ornamented with laurel leaves and ribbons; and the family coat of arms of carved work. The cornice is ornamented with twelve stars a central star, to represent the thirteen original states and is surmounted by bronze hatchets. On the reverse side of the pedestal is the seal of the P. O. S. of A. in bronze, with the inscription, "Erected to the Honor of Washington, 1896, by the Patriotic Order Sons of America and People of Wyoming Valley." On either side are eagles, with wings outspread, on a sub-base in relief. The bronze work is to be in standard bronze. The marble statue of Washington to surmount the pedestal will be eight feet, three inches in height, and will represent him reading his inaugural address. The left hand is resting on the hilt of a sword pushed back, and the right hand is holding a scroll. The figure is taken from casts made from the life mask of Houdin. The pedestal on which the figure will stand will be about thirteen feet in height, and about three feet, eight inches square. Wilkesbarre is showing a patriotic spirit in this work, an example to be followed by many other cities.

The Messrs. Wilson Brothers, of the Bristol Vt., *Herald*, have erected in the Bristol cemetery, a monument to their father and mother in the shape of an arch of an old Washington hand printing press into which has been set a slab of marble recording the names, dates of birth and death of their parents. The appropriateness of the monument lies in the fact that the father was a printer, and the four sons follow in his footsteps. The press was first used in Burlington in 1837, having been taken there some years previous. It was purchased by the Wilsons in 1875. The first issue of Bristol *Herald* was printed on it in 1875.

F. WOLLMETRAH

Manufacturer of

**Rustic Monu-
ments in . . .**

BEDFORD STONE.

Yards and Mills at

173-175 CLYBOURN PLACE,

CHICAGO.



Send Tracings for Estimates.



Ryegate Granite Works Co.

SOUTH RYEGATE, VERMONT-

Quarry Owners and Manufacturers of

RYEGATE STANDARD AND BARRE GRANITE

Facilities.

Unlimited Water Power.
McDonald Stone Cutting Machine
Power Derricks, Turned Lathes.
Most Improved Polishing
Machinery. Artistic Models

Specialties.

Platforms, Steps, Columns,
Polished or Hammered. Round
Rail for Cemetery Enclosures, Statuary,
Mausoleums, Building Fronts,
Rough Stock.

Before placing your orders for any above kinds of granite work, write us for prices.

MILFORD GRANITE

MONUMENTAL WORK. D. L. Daniels, Milford, N. H.



No. 140.



No. 141.



No. 142.



No. 143.



No. 144.



No. 145.



No. 146.

Specimen Illustrations

Reproduced from Designs in

The Monumental News

International Edition.

EACH design is illustrated on heavy plate paper $8\frac{3}{4} \times 11\frac{3}{4}$ inches in Photogravure, half tone or etching. 60 plates issued during the year. Five mailed every month.

THE illustrations include monumental work of every description from American and Foreign cemeteries. Many of the illustrations are reproductions from original designs drawn expressly for THE MONUMENTAL NEWS.

YOU can elevate the standard of monumental art by showing your customers illustrations of artistic work that is being introduced throughout the country. Hundreds of leading monument dealers have taken the International Edition for several years.

THESE plate illustrations comprise the International Edition. They are mailed with the Regular Edition every month. Subscription \$2.50 a year.

R. J. Haight,
 Publisher,
 334 Dearborn St. Chicago.

Duplicates of these cuts are for sale to subscribers at \$1 each.

EVERY MARBLE AND GRANITE

DEALER in the
United States will read the EIGHTH Anniversary
Number of **THE MONUMENTAL NEWS**,
issued January 1st.

THIS IS IMPORTANT TO ADVERTISERS.

Trade Changes, Etc.

NEW FIRMS.

J. F. Conant is a new dealer at Cherokee, Ia.

J. F. Reagan has recently commenced business at Taunton, Mass.

T. H. Bateman & Co. is a new firm at Camden, Tenn.

C. B. Webb & Co., Statesville, N. C., will open a branch office at Wilkesboro, N. C.

Gustave Alber has recently commenced in the monumental business at Allegheny, Penn.

John Clark is a new dealer at Sing Sing, N. Y.

The Williams Granite Company, a new quarrying company, have recently organized at Grafton Centre, N. H., with a capital stock of \$50,000.

Damerell Bros. have recently commenced in the quarrying business at Milford, Mass.

F. M. Henderson is a new dealer at Vicksburg, Miss.

Nelson & Daniels are a new partnership at Hardwick, Vt.

Wilson J. Litzberger has recently started in the monumental business at Belvidere, N. J.

W. W. Mount is a new dealer at Memphis, Mo.

Iglehart & McKeown is a new firm at Davenport, Ia.

William Almich is a new dealer at Arlington, Minn.

Chas. J. Crosby is a new dealer in monumental work at La Crosse, Wis.

J. W. Goodloe is a new dealer at Morganfield, Ky.

M. Van Antwerp will soon establish a monumental plant at Chesaning, Mich.

The Winston-Salem Granite company, Winston, N. C., has been incorporated with a capital stock of \$50,000.

Adams Marble company has been incorporated at North Adams, Mass.; capital stock, \$25,000.

The South Carolina Granite company is a new corporation now organized at Winnsboro, S. C.

TRADE CHANGES.

F. J. Rink, Geneseo, Ill., intends selling out his business plant.

We were in error in stating that Wm. M. Dwyer had formed a partnership with John R. Hughes at London, Ont. He is now engaged as western salesman for a manufacturing concern.

The Cazenovia Marble and Granite Works at Cazenovia, N. Y., has been incorporated with \$5,000 capital stock.

SUCCESSORS.

Norton & Sneed succeed Rufus A. Norton, at Clarksville, Ark.

A. B. Sode succeeds Sode & Karsch at

Evansville, Ind.

Wm. Rieger succeeds Troost Bros. at Oak Park, Ill.

Bloom & Lewis succeed J. F. Bloom at Red Oak, Ia.

Webber Bros. & Co. succeed F. A. George at Hardwick, Vt.

Sands & Wood succeed Sands & Woolridge, Elyria, O.

A. F. Burton succeeds the partnership of Burton & Williams at Thomaston, Me.
GONE OUT OF BUSINESS.

Jacob Mair has discontinued business at Prescott, Ariz.

Wm. Davenport has gone out of business at Fayetteville, Ark.

L. C. Hilt has gone out of business at Fountaintown, Ind.

R. Geissler, New York City, has discontinued his branch office.

The Hill City Monumental and Stone company, Vicksburg, Miss., is entirely out of business.

DECEASED.

Peter Kirchen, Chicago, Ill.

Hugh J. McDonald, New Orleans, La.

Richard Power, of the firm of R. Power & Son., Boston, Mass.

Martin Canfield, Sr., Honesdale, Penn.

SOLD OUT.

C. W. Sausser has sold out at Tyrone, Pa.

A. J. Sturgeon, Hardwick, Vt., has sold out his entire plant.

DISSOLVED.

Johnson & Spellman, Stockton, Cal., have dissolved partnership.

ASSIGNED.

J. Davis, Roanoke, Va., has assigned.

Fountain Air BRUSH

Patented May 3, 1892.

CHEAPEST = BEST

Send for
Descriptive
Catalogue



**Thayer
and
Chandler**

Sole Manufacturers,

46 Madison Street, CHICAGO.

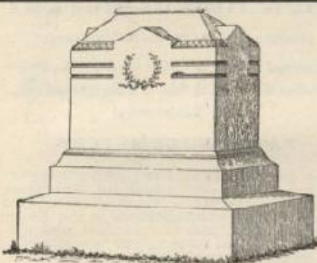
Used in Black and White and Color Work.

JOHN SWENSON,

SOLE PRODUCER OF THE CELEBRATED
DARK BLUE CONCORD GRANITE

For Statues and Fine Work it has no Superior.
 Also Manufacturer of Fine Hammered and Rock-Faced Monuments, Mausoleums, Tombs, Coping, etc.

Correspondence Solicited.
WEST CONCORD, N.H.



LESLIE B. HENDERSON,
 (Successor to)
HENDERSON & DICKIE,
 Manufacturers and Dealers in Light and Dark
Barre Granite Monuments,
Tablets and General Cemetery Work.
 Draw-ry and Carving done in an Artistic manner.
BARRE, VT.

A. J. YOUNG
 MANUFACTURER OF
General Monumental Work
 From Best Light and Dark
BARRE - GRANITE
EAST BARRE, VT.

JOHN BENZIE. Manufacturer and
 . . . Dealer in the best
LIGHT and DARK BARRE GRANITE MONUMENTS,
 AND GENERAL CEMETERY WORK.
 Quarrier's Pneumatic Tools,
 Estimates Cheerfully Given. * **BARRE, VT.**

Field & Wild, QUARRYMEN,
 Dark Blue Quincy Granite
Rough Stock, Monumental and Cemetery Work.
 The Superior Qualities of our granite have
 long been recognized by the trade. **QUINCY, MASS**

MONUMENTS FROM THE FAMOUS HARDWICK STOCK.
 Should be ordered direct from
FRANKLIN HARDWICK & SONS.
 —DEALERS IN—
ROUGH, HAMMERED AND POLISHED GRANITE.
QUINCY, MASS.

McINTOSH AND SON,
 Manufacturers of all kinds of
MONUMENTAL WORK.
 From all Grades of Quincy and other Granites.
 Estimates Cheerfully Given. Columbia St., S. Quincy, Mass.

J. Aja & Co. | **W. T. Kenerson & Co.**
 Manufacturers of Light and Dark
 Barre Granite Monuments and Gen-
 eral Cemetery Work. **BARRE, VT.**
 Manufacturers of Barre Granite Mon-
 uments and Cemetery Work.
BARRE, VT.

Jas. K. Milne.
 Manufacturers of Barre Granite Monu-
 ments and Cemetery Work.
BARRE, VT.

CANNON BROS.,
 Manufacturers of all kinds of
 BARRE GRANITE . . .
MONUMENTAL WORK.
 Correspondence solicited.
NORTHFIELD, VT.

A. BERNASCONI & CO., Manufacturers of and
 Wholesale Dealers in
GRANITES AND ITALIAN MARBLE.
 Barre, Quincy, Concord, Hardwick, Ryegate, Calais, Red Swede,
 Red Scotch, Italian Statuary, Granite Statuary.
 Artistic Carving and Modeling * **WEST BERLIN, VT.**
 Monuments and Cemetery Work.

CARLE & WALKER,
 Manufacturers of and Dealers in LIGHT and DARK
BARRE GRANITE
 Monuments, Tablets and General Cemetery Work.
 Fine Draped Work a Specialty. . . . **BARRE, VT.**

Business Chances, For Sale, Etc.

Advertisements inserted in this column 10 cents a line each insertion; via words to a line. Copy should be received not later than the 20th.

FOR SALE.

WANTED—Somebody to help me open a granite quarry, the stock of which has been tested, specimens sent out and over twenty-five thousand dollars worth of work offered. Little capital required as orders are cash on delivery. Granite tools or engine and boiler will be accepted as capital. Address with stamp Granite, St. Louis, Mo.

FOR SALE—Marble and granite dealers stock, rough and finished. Tools and everything necessary for business. Address F. J. Rink, Geneseo, Ill.

WANTED—To exchange Real Estate for granite or marble monuments. Address Thomas Hobbs, Leota, Ind.

FOR SALE—Granite and marble shop located at Henry, Ill. For cash or on time. A good chance for the hustler. No competitor. A rich farming community. Address Henry Granite Co., Henry, Ill.

FOR SALE—\$1200.00 buys a fine stock of marble and business in a city of 5,000 population, largely catholic. Three railroads only marble works in the country. Have \$600.00 worth of spring orders on hand, a grand location for the right man. Address H. L. Brooks, Chippewa Falls, Wis.

FOR SALE—Marble and Granite Works for sale in a good territory. Trade amounts to \$5,000 a year. Satisfactory reasons given for selling same. Population 3,000, with good farming country surrounding. Correspond with Nicholas Grotzinger, Paxton, Ill.

Wanted—Situations or Help.

There will be a charge of 25c. for every advertisement in this department when replies are addressed in care of the MONUMENTAL NEWS. Advertisements will be inserted FREE only when replies are addressed direct to the advertiser.

WANTED—By a first-class marble workman and granite letterer, a permanent job. Have plenty of tools and can take charge of shop. Will work for \$2.00 per day the year round. If you need a steady sober man, write me at once. Can also sell work on road. Address Marble Cutter, care N. R. Seers, 1143 Independence ave., Kansas City, Mo.

WANTED—By a first-class Marble and granite salesman, permanent situation for 1896 commencing Jan. 1, or sooner. Am sober and reliable. Can work in shop if required. Salary expected \$600.00 and expenses. Address salesman, care N. A. Perkins 29 N. 6th st., Kansas City, Kan.

SITUATION WANTED—By a good general workman. Best of references. Address H. A. Lowe, care Wm. T. Ashford, 57th and Greenwood ave., Chicago.

SITUATION WANTED—By a general workman, on marble or granite. References. Address L. 507 Lincoln ave., Aurora, Ill.

SITUATION WANTED—By a good general workman of experience in the trade. Can letter and trace granites. Address W. J. Hunt, 401 South Main st., South Bend, Ind.

WANTED—Position as manager—superintendent, on or on the road with a manufacturing granite company. I have had fifteen years' experience in both wholesale and retail granite business and am thoroughly posted in all details of manufacturing—have a good knowledge of plans and perfectly competent to fill any of the positions mentioned. Address J. E. T., care MONUMENTAL NEWS.

WANTED—Position as draughtsman and salesman with a retail granite firm. Have my own tools including "air brush" and a fine line of designs, make a strictly first-class drawing and can estimate cost of the work in any granite, am thoroughly posted in all branches of the business—both wholesale and retail. Also a good salesman with the best class of trade. Address B. G. H., care MONUMENTAL NEWS.

WANTED—Situated by a good general workman, can cut, carve, and letter marble or granite. 20 years experience, sober and reliable, am good rustic carver, marble or Bedford, Ind. Stone. Best of references if required. Address Martin J. Chalk, 2321 Bank st., Louisville, Ky.

WANTED—By a first class marble workman and granite letterer, a position in shop where I can find employment the year round. Will work cheap this winter. Have plenty of tools and am sober and reliable. Address Marble Man, Tanguoxie, Kan.

WANTED—By the subscriber, an opening where his long experience in monumental work in its entirety, may be made mutually beneficial. Always sober; want a man; J. H. Ringgold, 825 Hampshire, Quincy, Ill.

WANTED—A first class granite and marble salesman, one who can come well recommended. A good salary and permanent position for the right man. The very best of territory. None but competent and reliable salesmen need apply. Address A. Back and Son, Hastings, Mich.

WANTED—An experienced salesman for retail granite and marble business; must be willing to go on his own merits. Best territory, with an established business of 30 years. Only men that can sell work need apply to The Schilling Co., Albany, N. Y.

A YOUNG MAN would like to get a position in a first-class Monumental yard, having considerable experience in that branch, being capable of taking charge if necessary. Does lettering and carving. Apply H. P. W., care of MONUMENTAL NEWS.

WANTED—One or two first-class granite cutters. Married men preferred. Permanent position to right man. Address Morris Bros., Memphis, Tenn.

WANTED—At once several experienced salesmen in the Monumental line. Good territory. Address with references, E. T. Stohman, Erie, Penn.

WANTED SITUATION—By a marble cutter and carver and granite letterer, capable of taking charge of a shop, several years experience. References from present employer if required. Address R. M. Box 133, Sandusky, Ohio.

WANTED—By a good all around marble workman and granite letterer a permanent position for the winter. Am a married man, sober and reliable. Will work at reduced wages for the winter. Am also a good salesman, will take job on road on fair salary. Address Marble Cutter, Valley Falls, Kansas.

DRAUGHTSMAN—familiar with use of air brush, perspective as well as scale drawing of monumental work can find permanent situation. State experience and salary expected. Chas. H. More & Co., 33 Dearborn St., Chicago, Ill.

WANTED—An experienced salesman to sell marble and granite at retail. A first class chance for a good man. Address at once Grand Rapids Marble Co., 116 Court St., Grand Rapids, Mich.

WANTED—By a first-class marble workman and granite letterer, situation in shop where I can find employment the year round when work is slack in shop will go on road to help out in scoring work. Am a fair salesman, sober and reliable married man. Please state wages paid in first letter. No reasonable offer rejected. Have plenty of tools and designs. Address D. A. Bray, Clifton, Kansas.

WANTED SITUATION—as a foreman Have handled from twelve to thirty-seven men. Can cut stone in all branches. Can also set up monuments, sharpen tools, and cut letters on marble or granite. Eight years experience. Capable of estimating work of any kind, also good draughtsman. Address B. X. Care The MONUMENTAL NEWS.

WANTED—An experienced salesman for retail marble and granite business, to work on salary and commission. We can give a good man the best chance to sell work. Territory, Erie County. The Schilling Co., 115 Seneca St., Buffalo, N. Y.

STONE CUTTERS

SAVE LABOR.

Use Nash's Expeditious Measurer

SAVE TIME.

A book containing 200 pages of indexed tables, which show at a glance the cubic contents of any stone according to its length, breadth and depth. Used by stone workers all over the world. Order of your book seller or address the publisher.

D. A. NASH,

24 State Street, NEW YORK.

AVOID ERRORS.**PARK AND CEMETERY**

(Formerly The Modern Cemetery.)

An Illustrated Monthly Publication Devoted to the Dissemination of Information Relative to the construction and Maintenance of

PARK AND CEMETERY.

The contributors to PARK AND CEMETERY are among the most prominent Landscape Architects, Engineers, Horticulturists, Park and Cemetery Superintendents in the United States. Their articles are practical, and consequently of great value to any one identified with park and cemetery work.

An important feature of PARK AND CEMETERY is the illustrations of Park and Cemetery plans, reduced from scale drawings. These will be valuable in the way of offering suggestions in the extension of old grounds or the laying out of new parks and cemeteries.

The columns of this paper are open to the discussion of topics pertinent to the field comprehended by the name of the paper.

Subscription, \$1.00 a year. Foreign, \$1.25.

R. J. HAIGHT, Publisher.

Now Ready
THE
Architects' Directory
For 1895-96

Containing a list of the Architects in the United States and Canada, classified by States and towns, with the architectural associations to which they belong indicated against each name, prepared with the greatest care to secure accuracy both in names and location; together with a classified index of prominent Dealers and Manufacturers of Building Materials and Appliances.

Manufacturers and Dealers cannot afford to be without one.

Handsomely bound; price, postpaid, \$1.

WM. T. COMSTOCK, Publisher,
23 Warren St., New York.