

Images from

The “Lettering Cutting with the Pneumatic Tool” section

from *The Manual of Monumental Lettering*,
published by Monumental News, early 1900s, pp. 5-35
available on Stone Quarries and Beyond at

http://quarriesandbeyond.org/cemeteries_and_monumental_art/pdf/manual_of_monumental_lettering-pub_by_monumental_news_chicago-1920s.pdf

This section, which begins on the next page,
is presented on the Stone Quarries and Beyond web site.

<http://quarriesandbeyond.org/>

Peggy B. Perazzo
Email: pbperazzo@comcast.net
June 2015

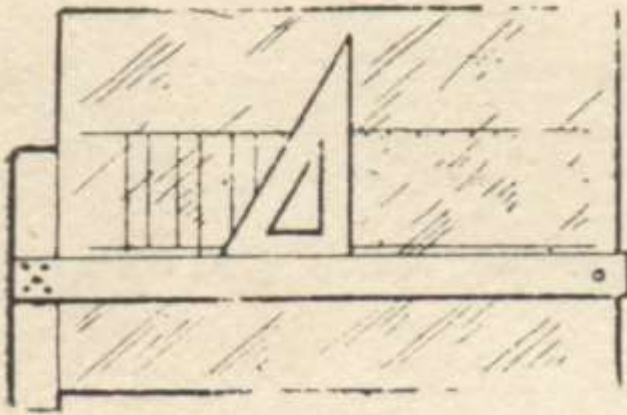


Fig. 1.

LAYING OFF LETTER-
WITH T SQUARE AND
T RULE

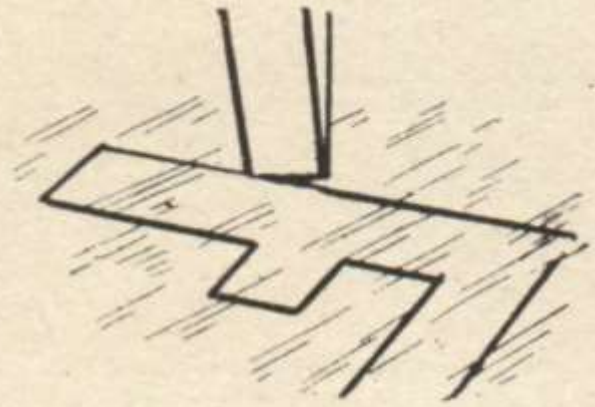


Fig. 2.

POSITION OF TOOL TO
CHECK OVER PEN-
CIL LINES

Fig. 1. Laying off letter with T square and T Rule

Fig. 2. Position of tool to check over pencil lines

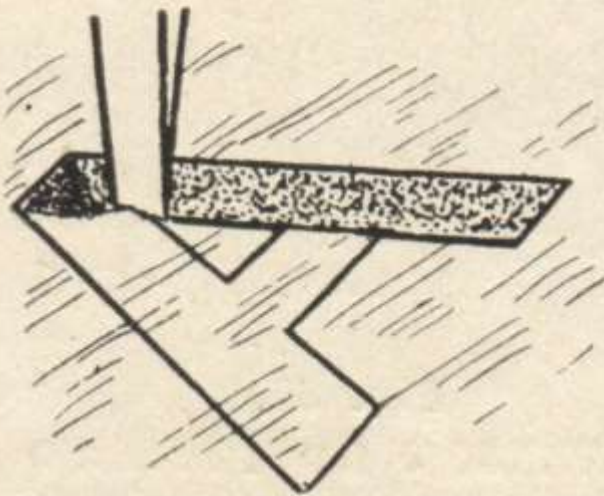


Fig. 4.

POSITION OF TOOL TO
START A V.

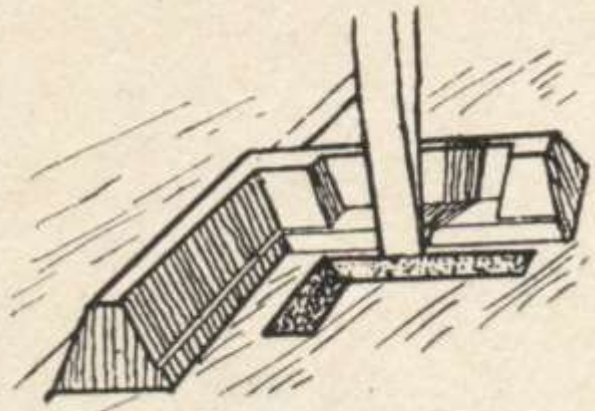


Fig. 5.

POSITION OF LETTER-
ING BLOCK AND TOOL
TO CHIP A STRAIGHT
LINE.

Fig. 4. Position of tool to start a V

Fig 5. Position of lettering block and tool to chip a straight line

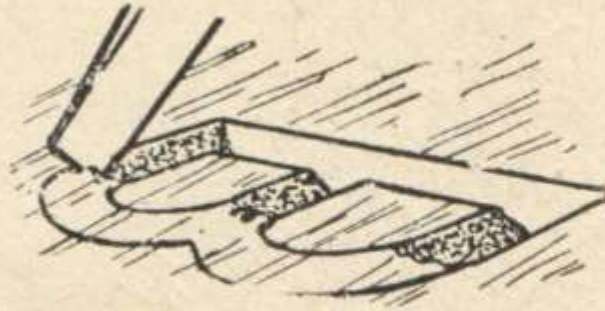
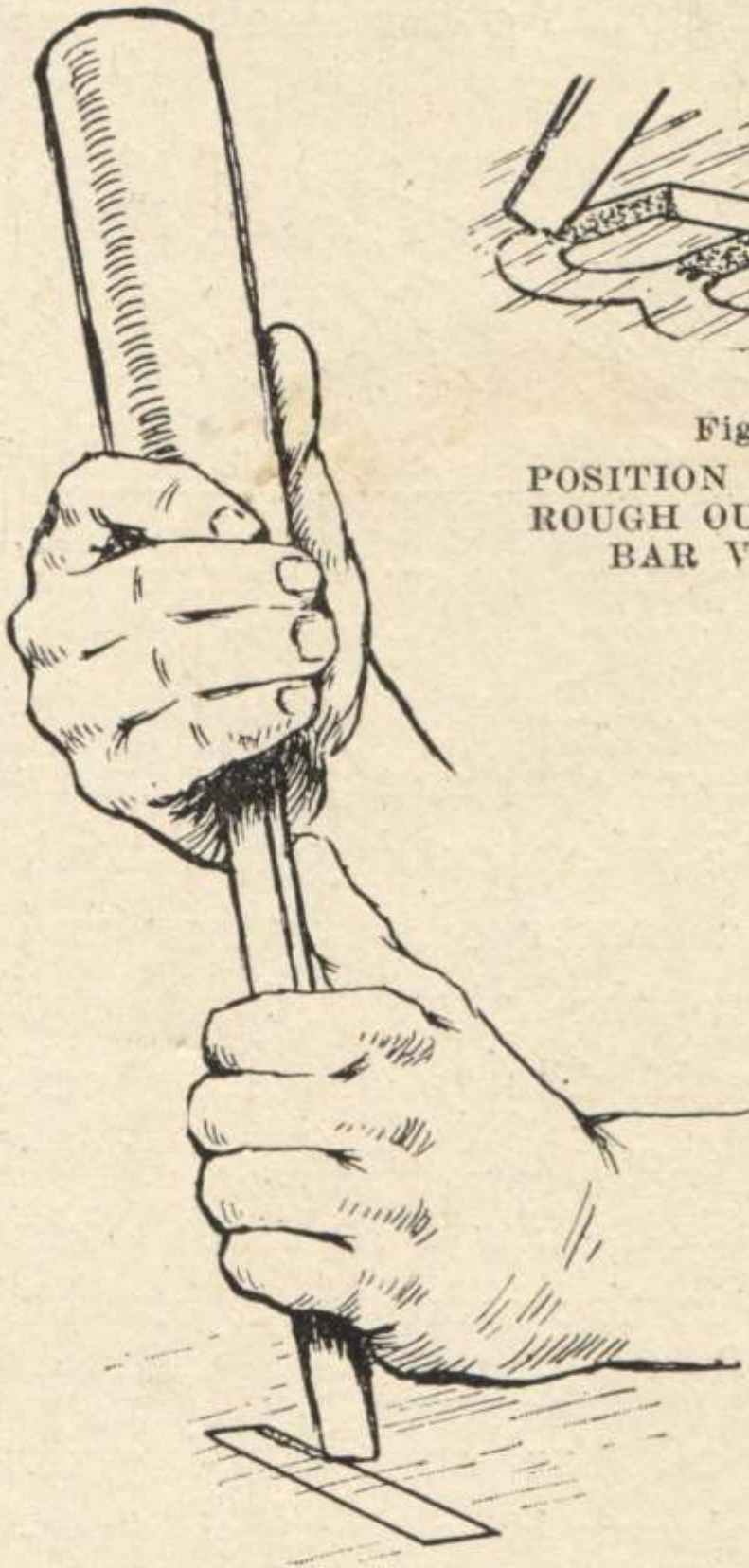


Fig. 35.
POSITION OF TOOL TO
ROUGH OUT A ROUND
BAR V-SHAPED.

Fig. 3.

SHOWING POSITION OF TOOL AND DIREC-
TION IN WHICH TO CUT SUNKEN BAR.

Fig. 3. Showing position of tool and direction in which to cut sunken bar

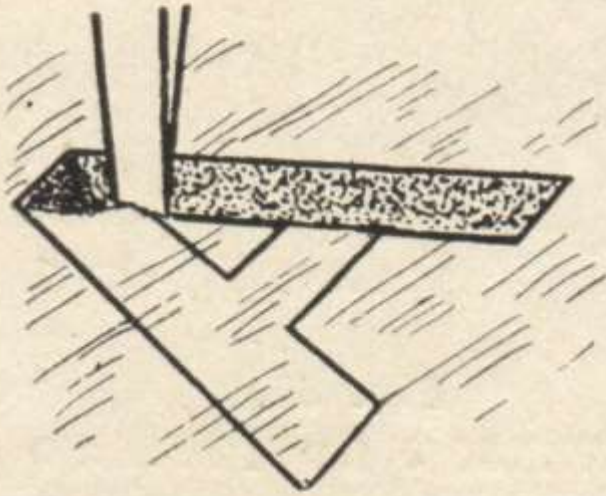


Fig. 4.
POSITION OF TOOL TO
START A V.

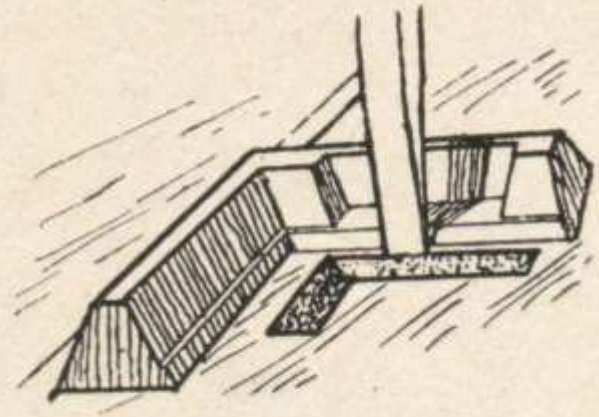


Fig. 5.
POSITION OF LETTER-
ING BLOCK AND TOOL
TO CHIP A STRAIGHT
LINE.

Fig. 4. Position of tool to start a V

Fig. 5. Position of lettering block and tool to chip a straight line

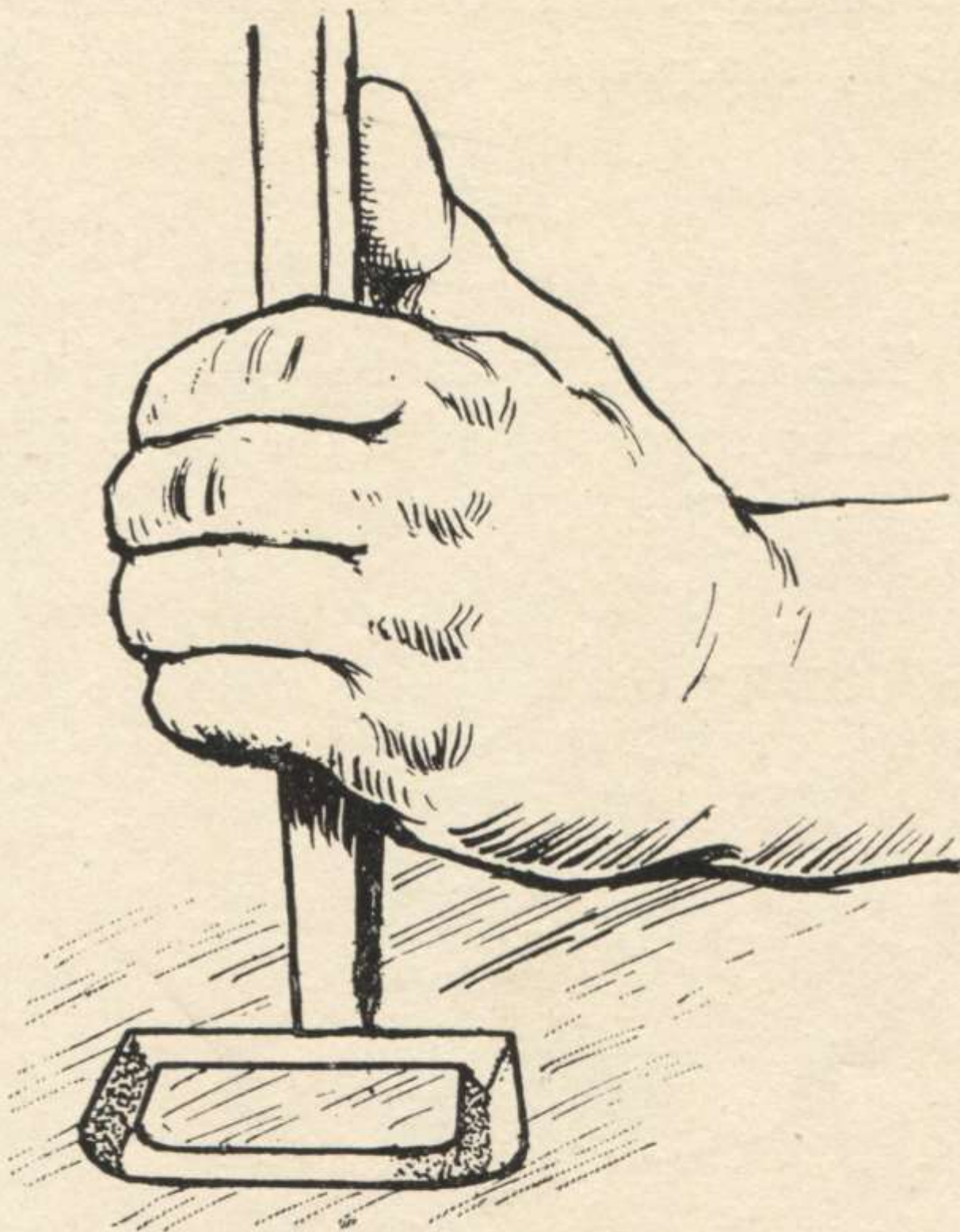


Fig. 6.

POSITION OF CHISEL WHEN STARTING TO
CLEAN A STRAIGHT BAR.

Fig. 6. Position of chisel when starting to clean a straight bar

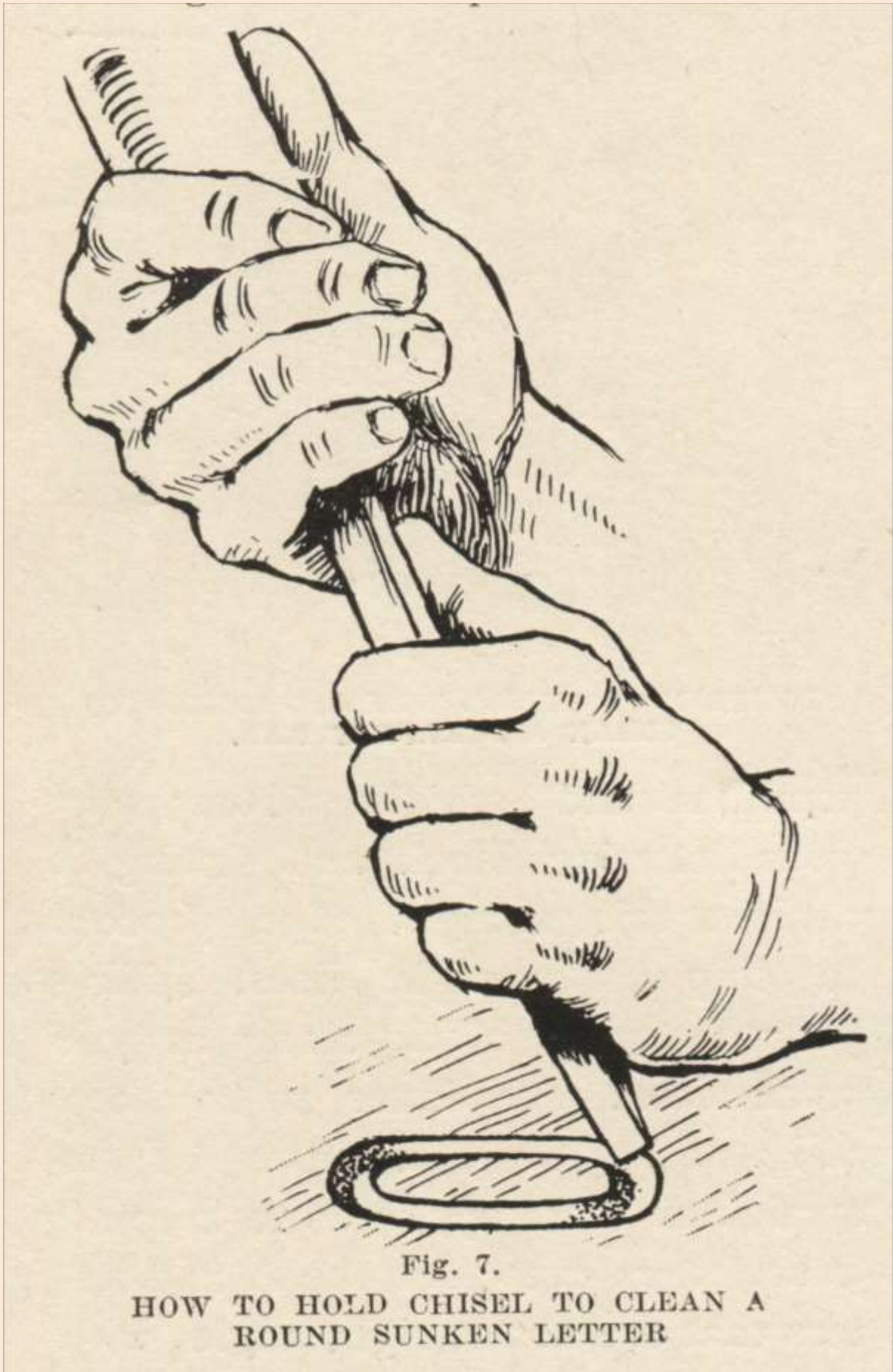


Fig. 7. How to hold chisel to clean a round sunken letter

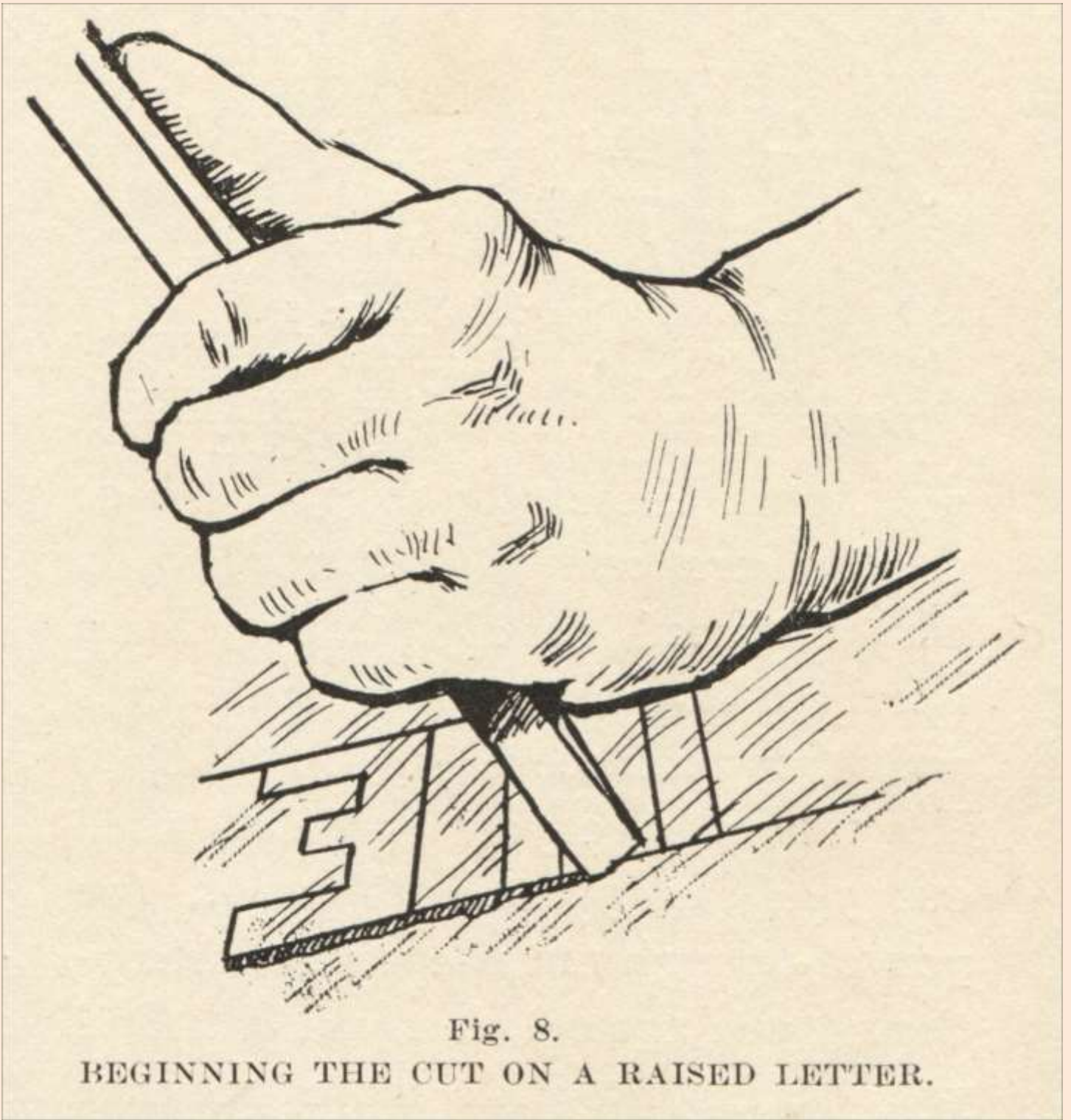


Fig. 8.

BEGINNING THE CUT ON A RAISED LETTER.

Fig. 8. Beginning the cut on a raised letter

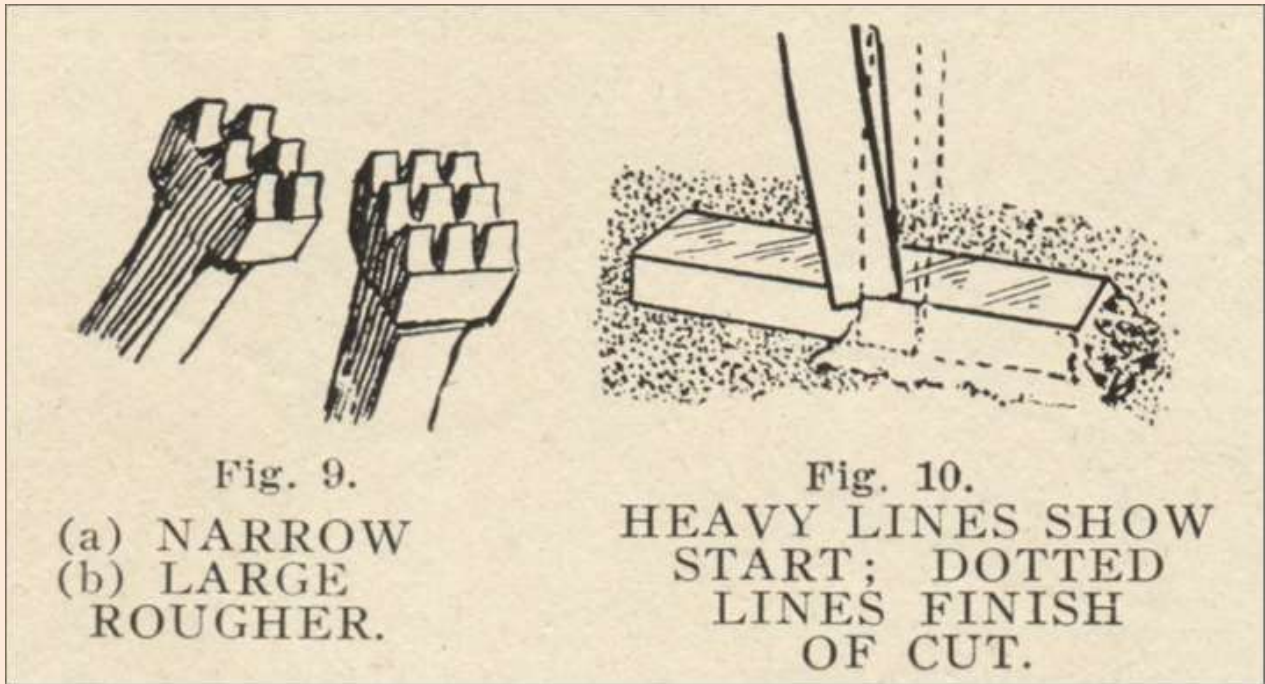


Fig. 9. (a) Narrow; (b) Rougher

Fig. 10. Heavy lines show start; dotted lines finish of cut

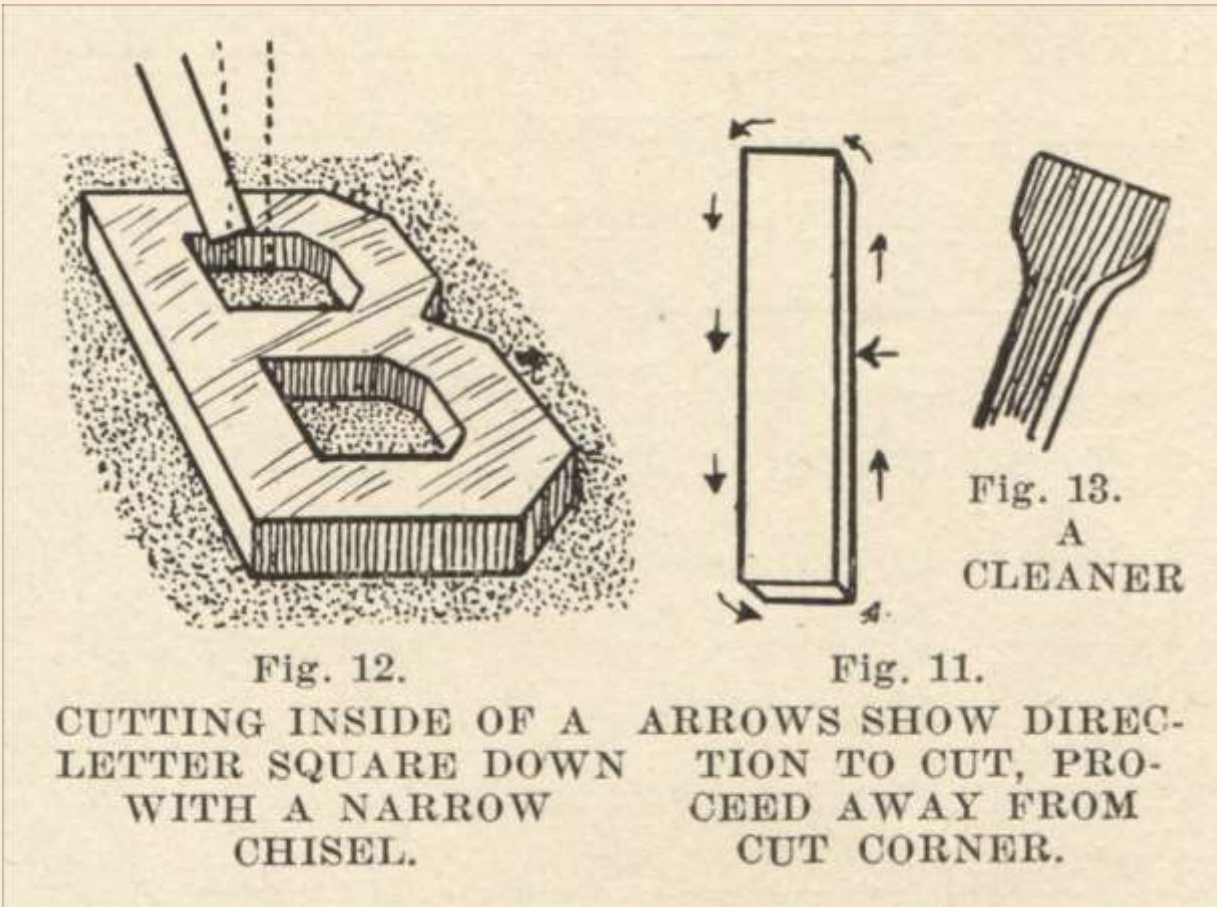


Fig. 12. Cutting inside of a letter square down with a narrow chisel

Fig. 11. Arrows show direction to cut, proceed away from cut corner

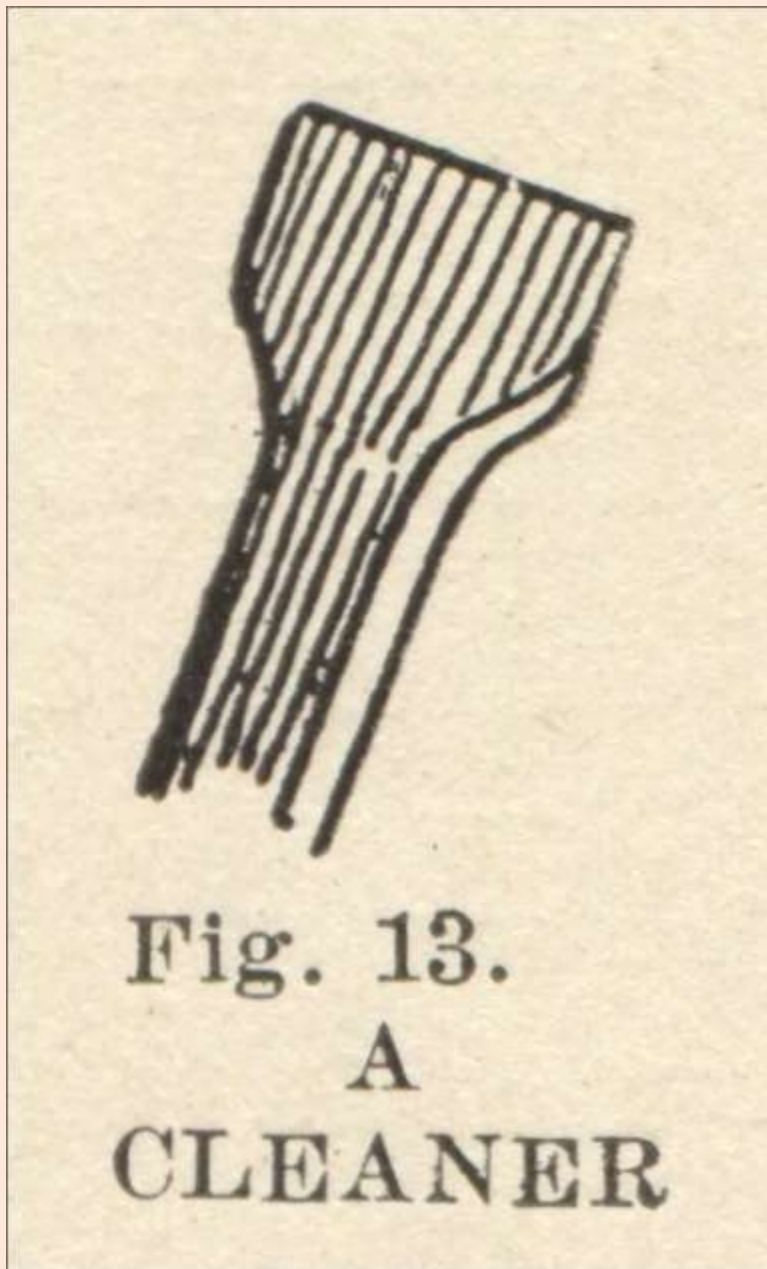


Fig. 13. A Cleaner



Fig. 14.
CUTTING V-SHAPED
RIDGE FOR RAISED
LETTERS.

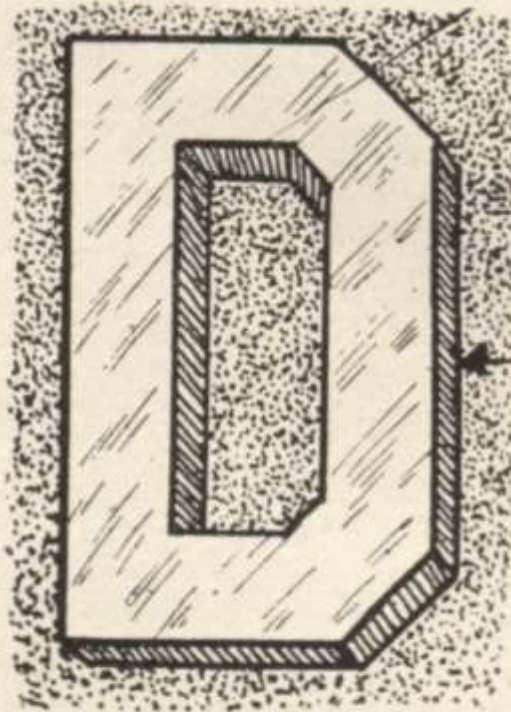


Fig. 15.
HOW THE FIN-
ISHED LETTER
LOOKS.

Fig. 14. Cutting V-shaped ridge for raised letters

Fig. 15. How the finished letter looks

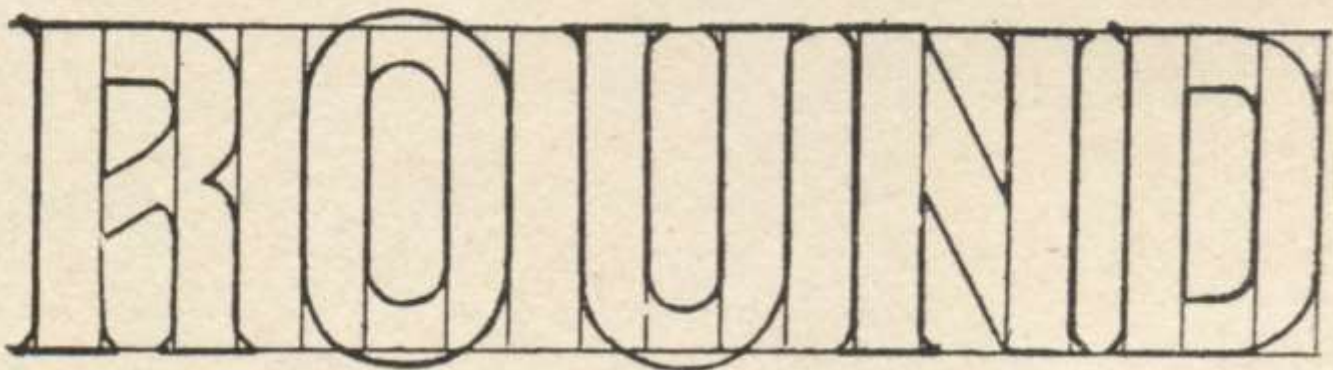


Fig. 16.
HOW TO LAY OFF ROUND RAISED LETTERS.

Fig 16. How to lay off round raised letters



Fig. 17.

CENTER LINES DRAWN
TO KEEP SIZE
AND FORM.



Fig. 20.

CONNECTING BARS
WITH SHARP
LINES.

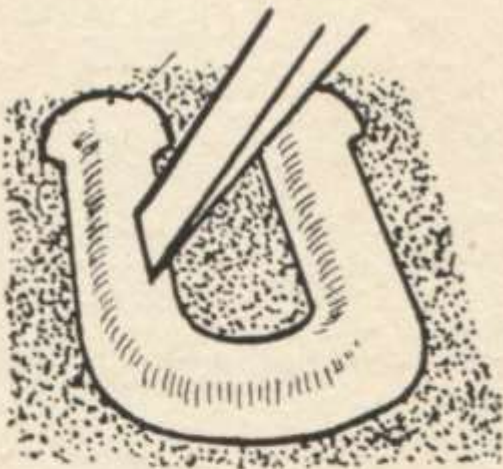


Fig. 18.

POSITION OF CHISEL
TO CLEAN ROUND
RAISED LETTER.

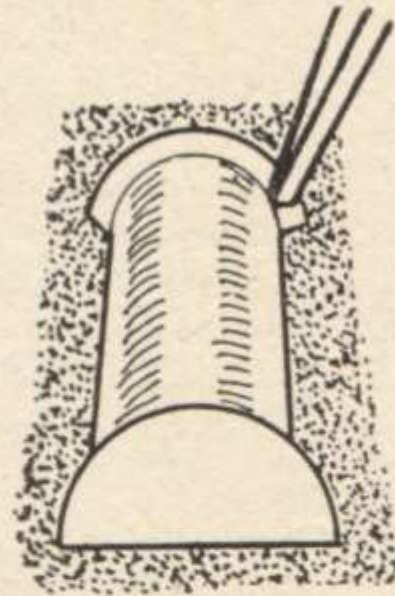


Fig. 19.

FINISHING HEAD OF
ROUND RAISED
LETTER.

Fig. 17. Center lines drawn to keep size and form

Fig. 18. Position of chisel to clean round raised letter

Fig. 19. Finishing head of round raised letter

Fig. 20. Connecting bars with sharp lines

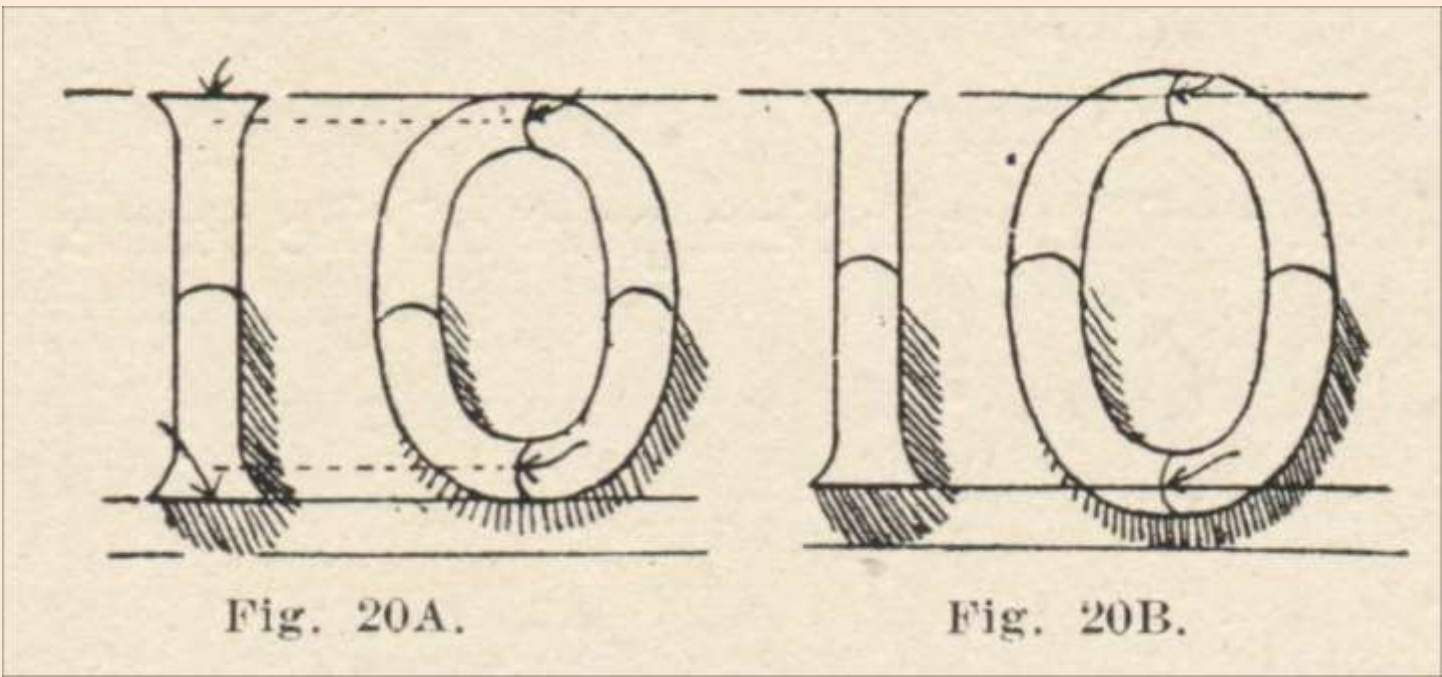


Fig. 20A. & Fig. 20B.

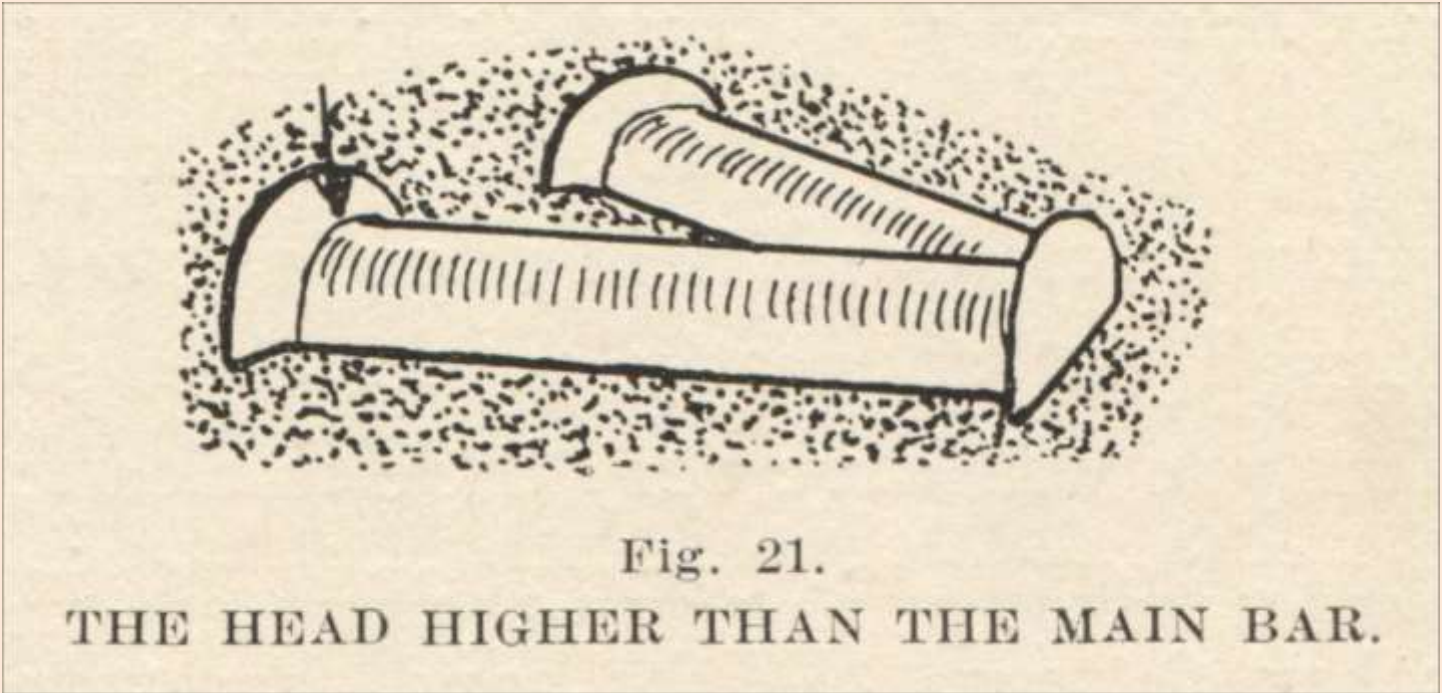


Fig. 21. The head higher than the main bar

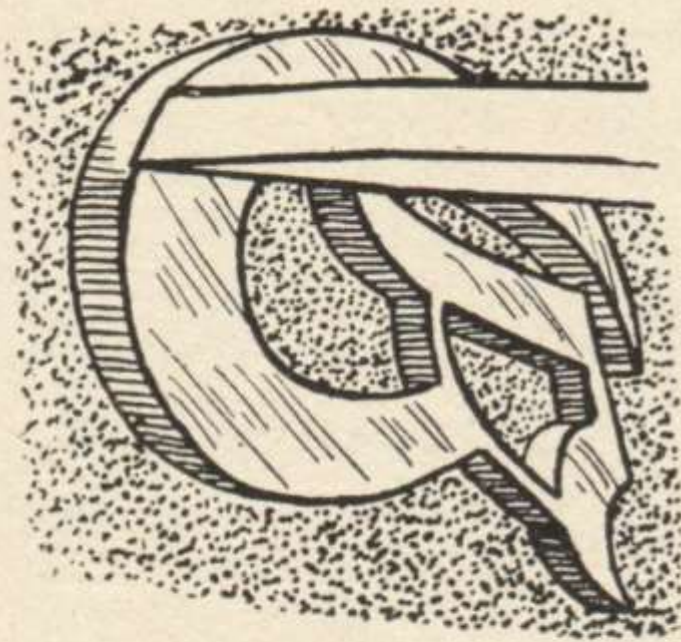


Fig. 22.
HOW TO
CHIP THE OUTSIDE
ROUND.

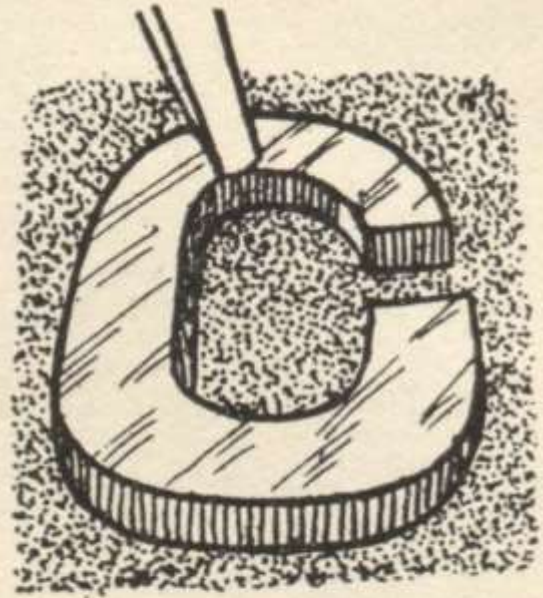


Fig. 23.
POSITION OF CHISEL
TO CUT INSIDE
SQUARE DOWN.

Fig. 22. How to chip the outside round

Fig. 23. Position of chisel to cut inside square down

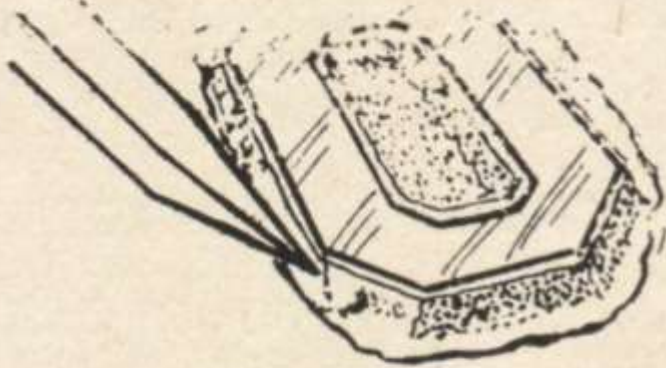


Fig. 25

POINTING UNDER THE
CUT LINE, PERPEN-
DICULAR WITH THE
CHECKED LINE.

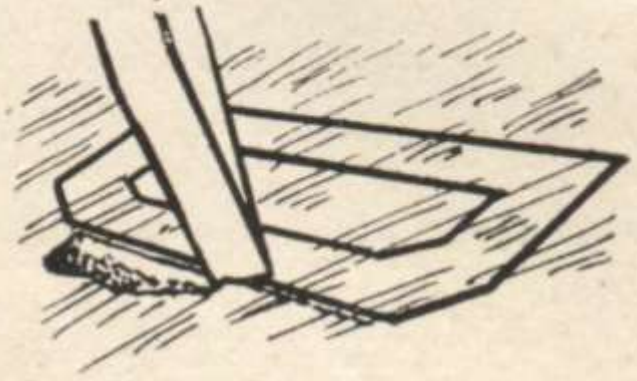


Fig. 24.

POSITION OF CHISEL
CUTTING AWAY FROM
CHECKED LINE.

Fig. 25. Pointing under the cut line, perpendicular with the checked line

Fig. 24. Position of chisel cutting away from checked line



Fig. 26

TOP LINE SHOWS HOW
NEAR TO CUT TO FIN-
ISH LINE BEFORE
USING MALLET TO CLEAN.

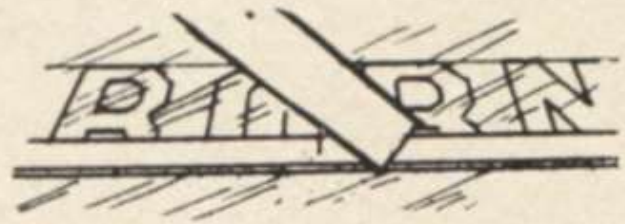


Fig. 27.

SHOWING HOW TO
SCRATCH LINES ON
MARBLE.

Fig. 26. Top line shows how near to cut to finish line before using mallet to clean

Fig. 27 Showing how to scratch lines on marble



Fig. 28.

HOW TO TAKE THE ROUGH AWAY
WITH A PLAIN CHISEL.

Fig. 28. How to take the rough away with a plain chisel.

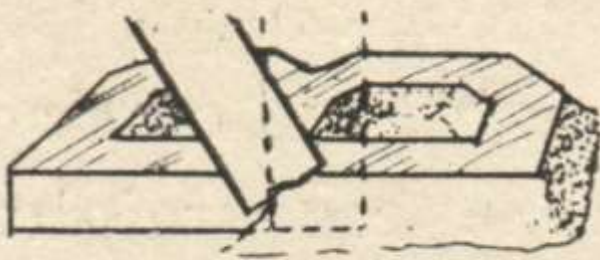


Fig. 29.

HOW TO START AND
FINISH A SIDE CUT
SQUARE DOWN.



Fig. 31.

HOW TO HOLD
CHISEL TO CLEAN
MARBLE TRACING.

Fig. 29. How to start and finish a side cut square down

Fig. 31. How to hold chisel to clean marble tracing

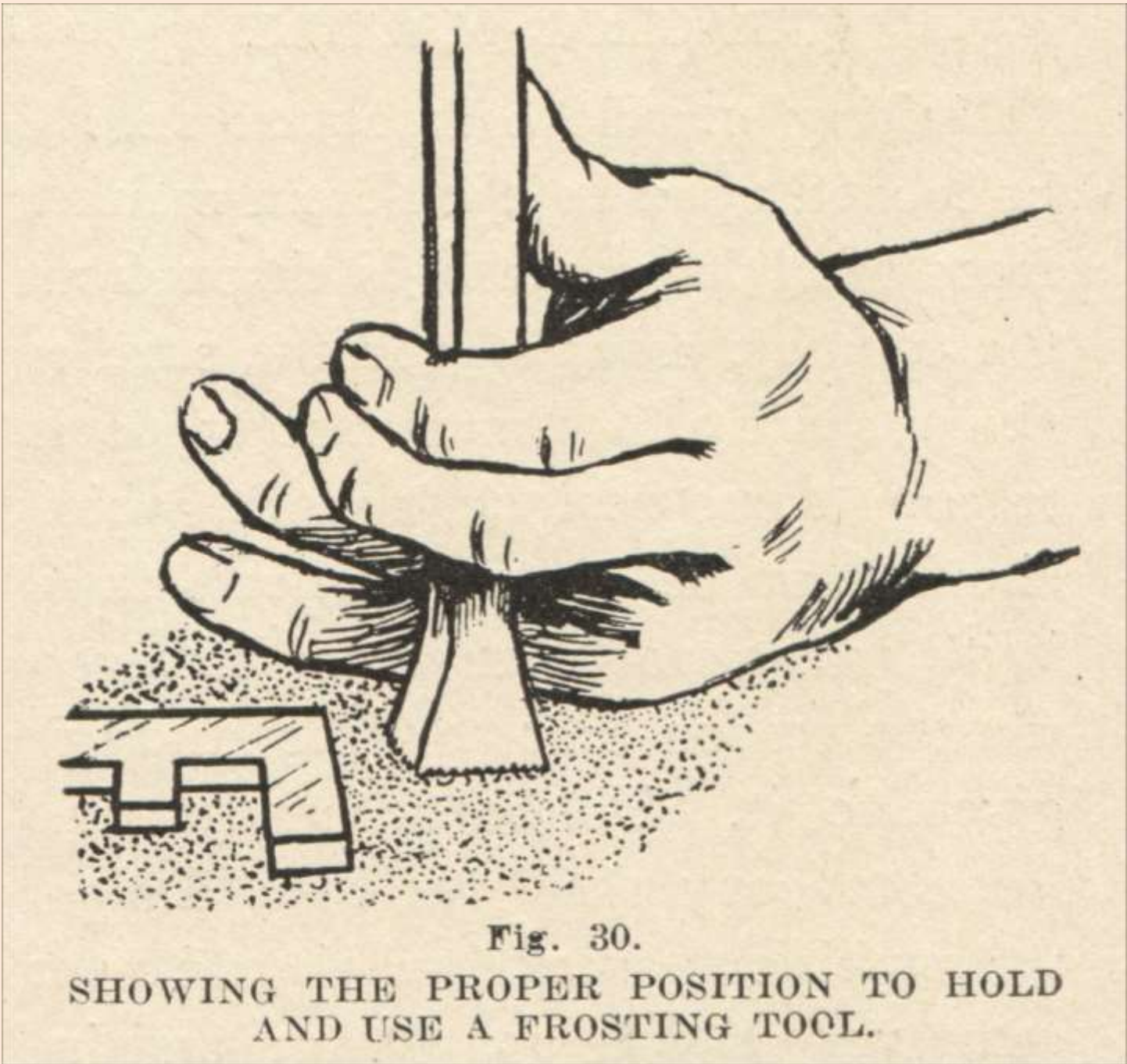


Fig. 30. Showing the proper position to hold and use a frosting tool



Fig. 32.

ROUGHING OUT A STRAIGHT BAR FOR
MARBLE SUNKEN LETTER.

Fig. 32. Roughing out a straight bar for marble sunken letter

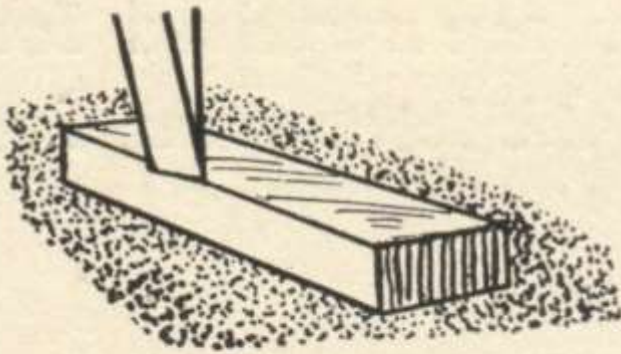


Fig. 34.

HOW TO FINISH A
SIDE SQUARE DOWN.

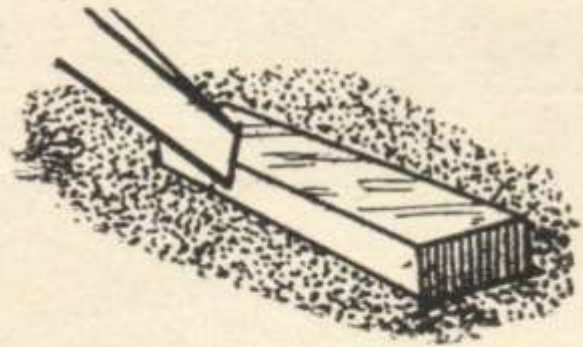


Fig. 33.

POSITION OF CHISEL
TO CUT THE SIDE
STRAIGHTER.

Fig. 34. How to finish a side square down

Fig. 33. Position of chisel to cut the side straighter

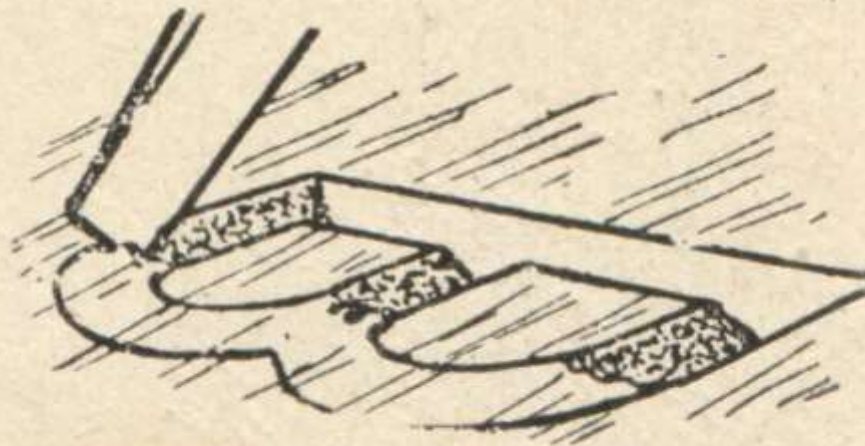


Fig. 35.

POSITION OF TOOL TO
ROUGH OUT A ROUND
BAR V-SHAPE.

Fig. 35. Position of tool to rough out a round bar v-shape