

***Special Granite Designs in the Famous
Pride of Elberton Blue Granite***

Design Book No. 16

1920's

***& Price List for Special Granite Designs
No. 16-H***

(You will find the Price List on page 36 of this document.)

These booklets (the first of which begins on the next page)
are presented on the Stone Quarries and Beyond web site.

<http://quarriesandbeyond.org/>

Peggy B. Perazzo

Email: pbperazzo@comcast.net

March 2012

SPECIAL GRANITE DESIGNS

In The Famous

Pride of Elberton Blue Granite



Design Book No. 16

IMPORTANT INFORMATION—READ CAREFULLY

Lettering

Prices on monuments shown in this catalogue are made to include a family name, when shown, in the style letters it is shown in and also one inscription of not more than thirty-five letters on the single monuments and two inscriptions of not more than thirty-five letters each, or a total of seventy letters on the double designs.

No verse letters have been added to the prices and WE MUST MAKE AN EXTRA CHARGE OF TWENTY CENTS PER LETTER FOR ANY VERSE LETTERS GOING ON THESE GRANITE DESIGNS.

In order that you may be in position to quote prices on any of the designs shown in this catalogue with any style letters, we give below prices on granite letters of all kinds and sizes.

All sunken verse letters	\$.20 each
2 inch sunken inscription letters	.25 each
4 inch sunken family name letters	.50 each
2 inch square raised inscription letters	.50 each
4 inch square raised family name letters	1.00 each

Footstones

Monuments shown in this catalogue priced at \$250.00 or more are to have sent with them a granite footstone about six or eight inches wide, four to six inches thick and one foot high, without extra charge. These footstones are made to stick down into the ground about half of their height. The top is flat polished and carries the initial letters of deceased party. The balance of the surface is rocked or rough finish. Monuments shown in this catalogue, priced at less than \$250.00 will have sent with them a marble footstone six inches wide, two inches thick and one foot high, carrying initial letters of deceased party. If customer does not want this marble footstone we will furnish a granite footstone like described above at an extra price of \$6.00 each.

Different Finishes

In the price list being sent for this catalogue we are making prices on each monument in several different finishes. With this price list you can make your customers a price on these monuments finished in almost every manner.

Individual Markers

No doubt, some customers will wish to use the monuments shown in this catalogue as family memorials and buy individual markers to carry the name and dates of deceased party. We refer you to individual marker designs No. 1698 and 1700 shown in this catalogue and also to various marker designs shown in your large catalogue which must be ordered at separate prices to that of the monument, however, any customer ordering any of our marker designs either in this or in the large catalogue to go with a monument ordered from this catalogue we will allow a special ten percent discount.

Granite Coping and Posts

Below we give sizes and prices on granite coping and posts. These prices are the lowest we have ever offered on granite coping and posts, in fact, these prices are lower than coping and posts furnished in marble and at these prices you should certainly be able to secure the orders of any prospects you have for coping and posts:

Coping 0.4 x0.6	flat axed top, balance surfaces rocked	\$2.50 per run. ft.
Coping 0.6 x0.6	flat axed top, balance surfaces rocked	\$3.50 per run. ft.
Coping 0.6 x0.8	flat axed top, balance surfaces rocked	\$4.50 per run. ft.
Coping 0.8 x0.8	flat axed top, balance surfaces rocked	\$5.50 per run. ft.
Coping 0.8 x0.10	flat axed top, balance surfaces rocked	\$7.00 per run. ft.
Posts 0.4 x0.4 x0.10	flat axed top, balance surfaces rocked	\$3.00 each
Posts 0.6 x0.6 x1.0	flat axed top, balance surfaces rocked	\$4.00 each
Posts 0.8 x0.8 x1.2	flat axed top, balance surfaces rocked	\$7.00 each
Posts 0.10x0.10x1.6	flat axed top, balance surfaces rocked	\$9.00 each

Prices on posts are for each to carry one sunken letter on flat top. Other letters will cost extra.



Design No. 1600

1600-A	1600-B	1600-C	1600-D	1600-E
Die 1.6x0.6 x2.0	Die 1.8x0.6 x2.2	Die 1.10x0.8x2.4	Die 2.0x0.8x2.8	Die 2.0 x0.10x2.8
B. B. . . . 2.0x0.10x0.6	B. B. . . . 2.2x0.10x0.6	B. B. . . . 2.6 x1.2x0.8	B. B. . . . 2.8x1.2x0.8	B. B. . . 2.10x1.4 x0.10
Estimated Weight, 440 lbs.	Estimated Weight, 680 lbs.	Estimated Weight, 850 lbs.	Estimated Weight, 1020 lbs.	Estimated Weight, 1250 lbs.
Total Height, 2 ft. 6 in.	Total Height, 2 ft. 8 in.	Total Height, 3 ft.	Total Height, 3 ft. 4 in.	Total Height, 3 ft. 6 in.

Die, polished face, axed top, rocked back and ends. Bottom base, axed wash and margin, balance rocked.

Foreman Cemetery Stone



Design No. 1602

1602-A

Die 1.6x0.6 x2.2
B. B. . . . 2.0x0.10x0.6
Estimated Weight, 460 lbs.
Total Height, 2 ft. 8 in.

1602-B

Die 1.8x0.6 x2.4
B. B. . . . 2.2x0.10x0.6
Estimated Weight, 680 lbs.
Total Height, 2 ft. 10 in.

1602-C

Die 1.10x0.8x2.6
B. B. . . . 2.6 x1.2x0.8
Estimated Weight, 860 lbs.
Total Height, 3 ft. 2 in.

1602-D

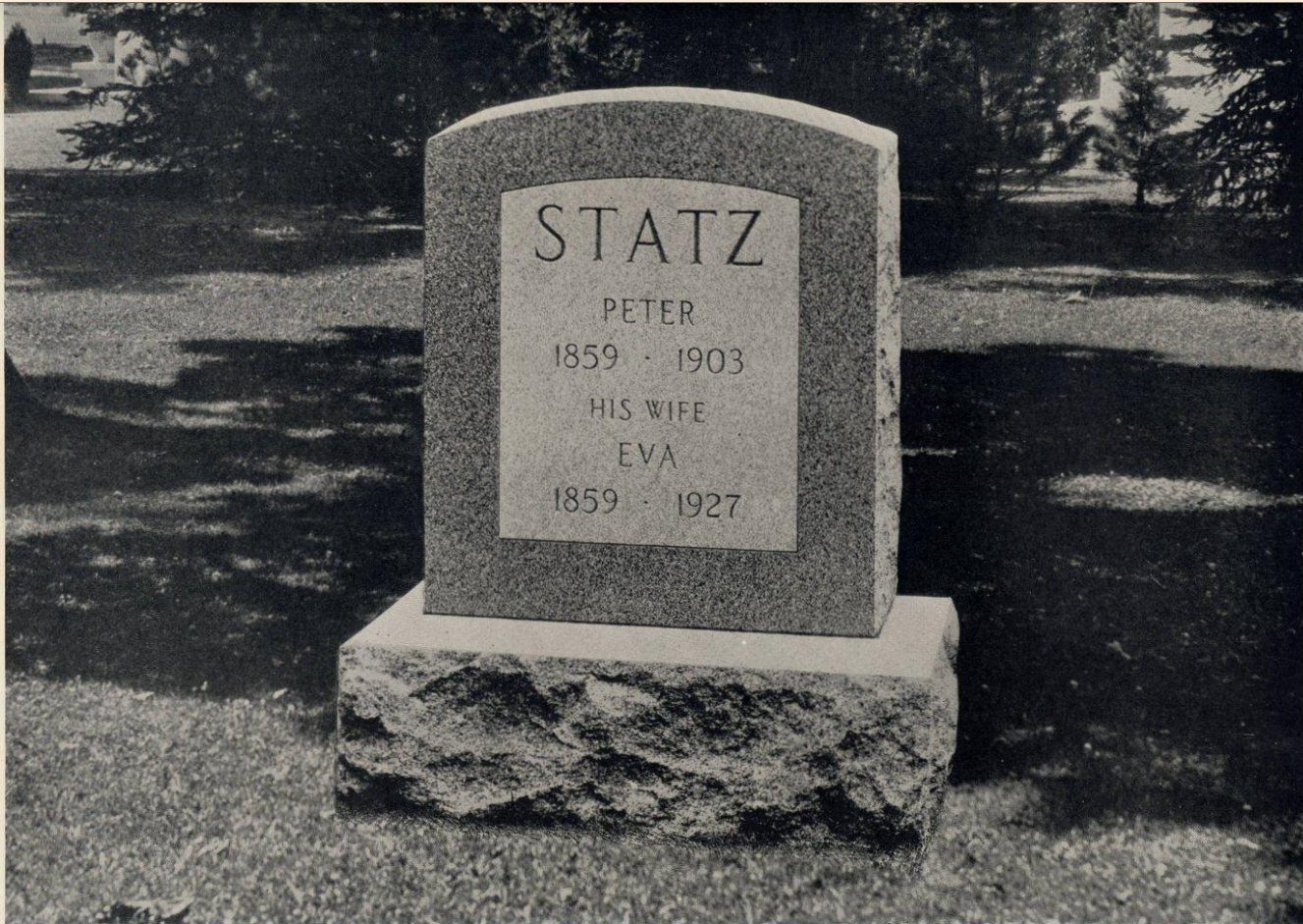
Die 2.0x0.8x2.10
B. B. . . . 2.8x1.2x0.8
Estimated Weight, 1030 lbs.
Total Height, 3 ft. 6 in.

1602-E

Die 2.0x0.10x2.10
B. B. . . . 2.8x1.2 x0.10
Estimated Weight, 1275 lbs.
Total Height, 3 ft. 8 in.

Die, polished face, rocked top, back and ends. Bottom base, axed wash, balance rocked.

Arnold J. Friker 1879 - 1927



Design No. 1604

1604-A

Die 1.6x0.6 x2.0
B. B. . . . 2.0x0.10x0.6
Estimated Weight, 440 lbs.
Total Height, 2 ft. 6 in.

1604-B

Die 1.8x0.6 x2.2
B. B. . . . 2.2x0.10x0.6
Estimated Weight, 680 lbs.
Total Height, 2 ft. 8 in.

1604-C

Die 1.10x0.8x2.4
B. B. . . . 2.6 x1.2x0.8
Estimated Weight, 850 lbs.
Total Height, 3 ft.

1604-D

Die 2.0x0.8x2.8
B. B. . . . 2.8x1.2x0.8
Estimated Weight, 1020 lbs.
Total Height, 3 ft. 4 in.

1604-E

Die 2.0 x0.10x2.8
B. B. . . . 2.10x1.4 x0.10
Estimated Weight, 1250 lbs.
Total Height, 3 ft. 6 in.

Die, polished face, rocked top, back and ends. Bottom base, axed wash, balance rocked.

Peter Statz (1859-1903) (and) His Wife Eva Statz (1859-1927)



Design No. 1606

1606-A

Die 1.8x0.6 x2.2
 B. B. . . . 2.2x0.10x0.6
 Estimated Weight, 475 lbs.
 Total Height, 2 ft. 8 in.

1606-B

Die 1.10x0.8x2.4
 B. B. . . . 2.4 x1.0x0.8
 Estimated Weight, 750 lbs.
 Total Height, 3 ft.

1606-C

Die 2.0x0.8x2.8
 B. B. . . . 2.8x1.2x0.8
 Estimated Weight, 1100 lbs.
 Total Height, 3 ft. 4 in.

1606-D

Die 2.0x0.10x2.8
 B. B. . . . 2.8x1.4 x0.10
 Estimated Weight, 1250 lbs.
 Total Height, 3 ft. 6 in.

1606-E

Die 2.4x1.0x3.0
 B. B. . . . 3.2x1.8x1.0
 Estimated Weight, 2200 lbs.
 Total Height, 4 ft.

Die, polished face, axed top, rocked back and ends. Bottom base, axed wash and margin, balance rocked.

Price Cemetery Stone



Design No. 1608

1608-A

Die 1.8x0.6 x1.10
B. B. . . . 2.2x0.10x0.6
Estimated Weight, 420 lbs.
Total Height, 2 ft. 4 in.

1608-B

Die 1.10x0.6 x2.0
B. B. . . . 2.2 x0.10x0.6
Estimated Weight, 680 lbs.
Total Height, 2 ft. 6 in.

1608-C

Die 1.10x0.8x2.2
B. B. . . . 3.6 x1.2x0.8
Estimated Weight, 840 lbs.
Total Height, 2 ft. 10 in.

1608-D

Die 2.0x0.8x2.4
B. B. . . . 2.8x1.2x0.8
Estimated Weight, 980 lbs.
Total Height, 3 ft.

1608-E

Die 2.2 x0.10x2.6
B. B. . . . 2.10x1.4 x0.10
Estimated Weight, 1275 lbs.
Total Height, 3 ft. 4 in.

Die, polished face, axed top, rocked back and ends. Bottom base, axed wash, balance rocked.

Syme Cemetery Stone



Design No. 1610

1610-A

Die . . . 1.10x0.6 x2.0
 B. B. . . . 2.4 x0.10x0.6
 Estimated Weight, 500 lbs.
 Total Height, 2 ft. 6 in.

1610-B

Die 2.0x0.8x2.2
 B. B. 2.6x1.0x0.8
 Estimated Weight, 820 lbs.
 Total Height, 2 ft. 10 in.

1610-C

Die 2.2 x0.10x2.6
 B. B. . . . 2.10x1.4 x0.10
 Estimated Weight, 1275 lbs.
 Total Height, 3 ft. 4 in.

Die, polished face, axed top, rocked back and ends. Bottom base, axed wash and margin, balance rocked.

Goetz Cemetery Stone



Design No. 1612

1612-A

Die 1.6x0.6 x2.0
 B. B. . . . 2.0x0.10x0.6
 Estimated Weight, 440 lbs.
 Total Height, 2 ft. 6 in.

1612-B

Die 1.8x0.6 x2.2
 B. B. . . . 2.2x0.10x0.6
 Estimated Weight, 680 lbs.
 Total Height, 2 ft. 8 in.

1612-C

Die 1.10x0.8x2.4
 B. B. . . . 2.6 x1.2x0.8
 Estimated Weight, 850 lbs.
 Total Height, 3 ft.

1612-D

Die 2.0x0.8x2.8
 B. B. . . . 2.8x1.2x0.8
 Estimated Weight, 1020 lbs.
 Total Height, 3 ft. 4 in.

1612-E

Die 2.0 x0.10x2.8
 B. B. . . . 2.10x1.4 x0.10
 Estimated Weight, 1250 lbs.
 Total Height, 3 ft. 6 in.

Die, polished face, rocked top, back and ends. Bottom base, axed wash, balance rocked.

Long Cemetery Stone



Design No. 1614

1614-A

Die 2.2x0.6 x1.10
 B. B. . . . 2.8x0.10x0.6
 Estimated Weight, 540 lbs.
 Total Height, 2 ft. 4 in.

1614-B

Die 2.8x0.8x2.4
 B. B. . . . 3.2x1.0x0.8
 Estimated Weight, 1100 lbs.
 Total Height, 3 ft.

1614-C

Die 3.0x0.10x2.8
 B. B. . . . 3.8x1.4 x0.10
 Estimated Weight, 1900 lbs.
 Total Height, 3 ft. 6 in.

Die, polished face, axed top, rocked back and ends. Bottom base, axed wash and margin, balance rocked.

Knight Cemetery Stone



Design No. 1616

1616-A

Die 2.6x0.6 x1.10
 B. B. . . . 3.0x0.10x0.6
 Estimated Weight, 625 lbs.
 Total Height, 2 ft. 4 in.

1616-B

Die 3.0x0.8x2.2
 B. B. . . . 3.8x1.2x0.8
 Estimated Weight, 1260 lbs.
 Total Height, 2 ft. 10 in.

1616-C

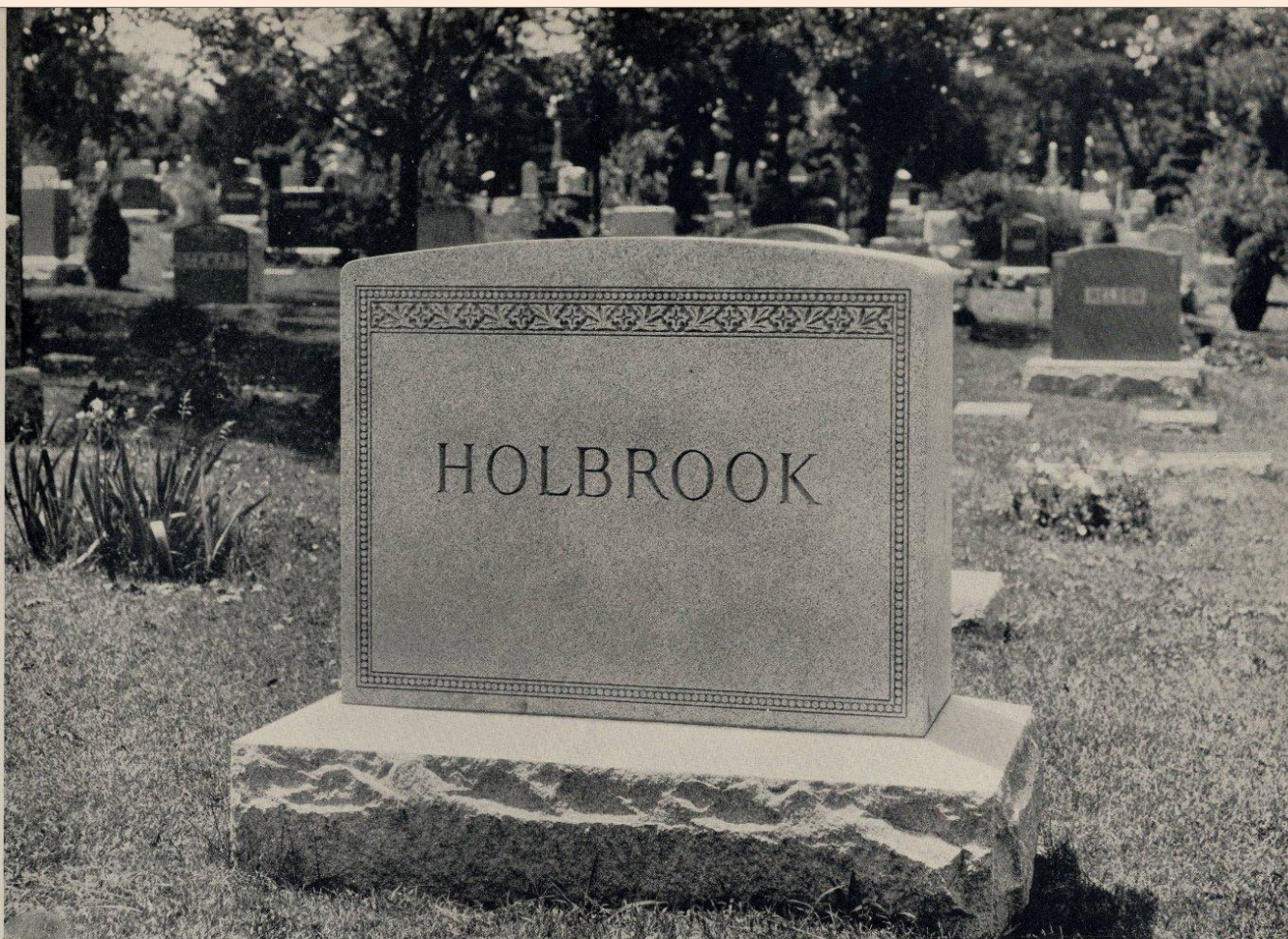
Die 3.6x0.10x2.8
 B. B. . . . 4.4x1.6 x0.10
 Estimated Weight, 2340 lbs.
 Total Height, 3 ft. 6 in.

1616-D

Die 4.0x1.0 x3.0
 B. B. . . . 5.0x1.10x1.0
 Estimated Weight, 3750 lbs.
 Total Height, 4 ft.

Die, polished face and back, axed top and ends. Bottom base, axed wash, balance rocked.

Runkel Cemetery Stone



Design No. 1618

1618-A

Die . . . 2.6x0.6 x1.10
 B. B. . . . 3.0x0.10x0.6
 Estimated Weight, 625 lbs.
 Total Height, 2 ft. 4 in.

1618-B

Die 3.0x0.8x2.2
 B. B. . . . 3.8x1.2x0.8
 Estimated Weight, 1250 lbs.
 Total Height, 2 ft. 10 in.

1618-C

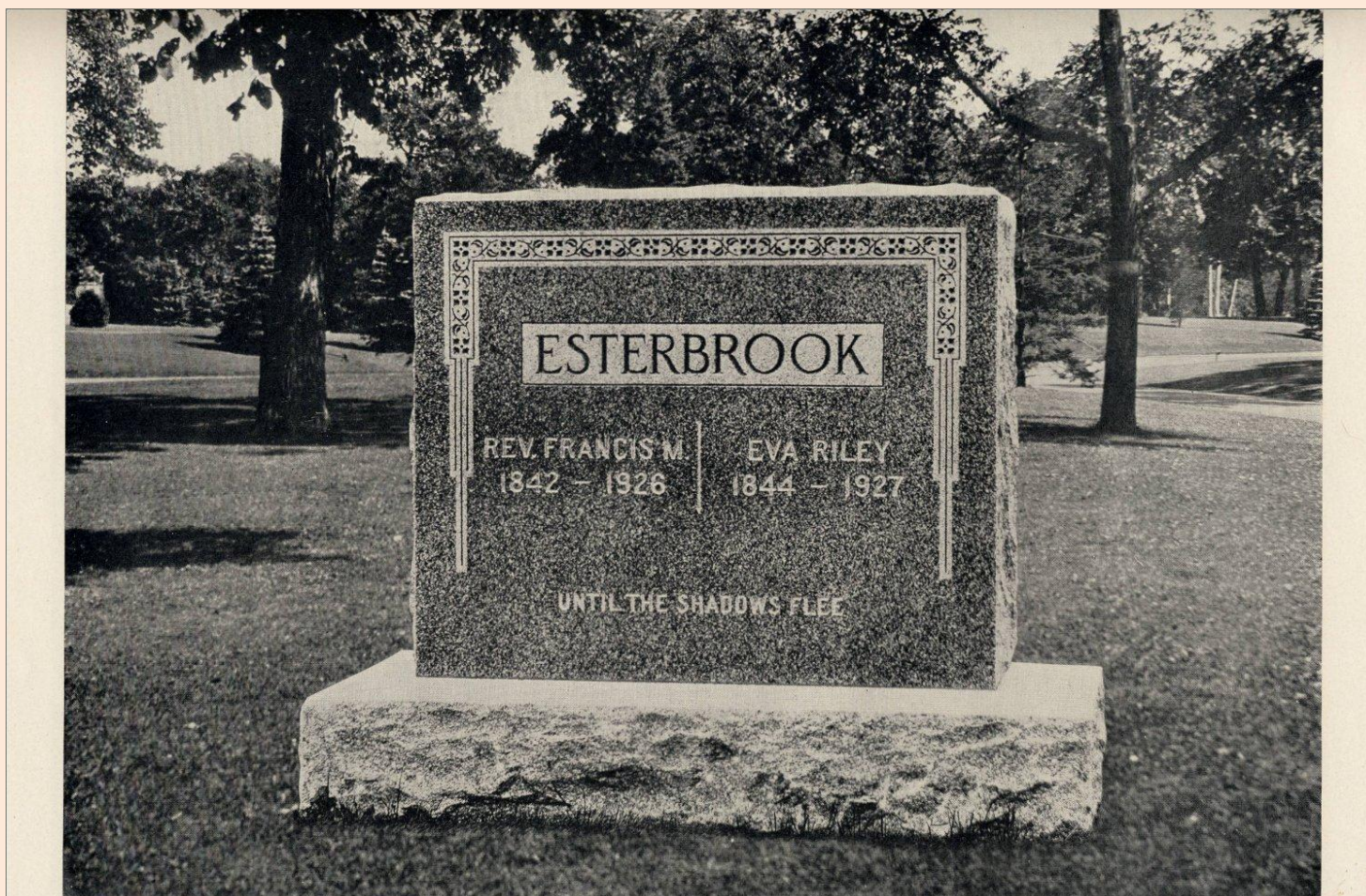
Die 3.6x0.10x2.8
 B. B. . . . 4.4x1.6 x0.10
 Estimated Weight, 2340 lbs.
 Total Height, 3 ft. 6 in.

1618-D

Die 4.0x1.0 x3.0
 B. B. . . . 5.0x1.10x1.0
 Estimated Weight, 3750 lbs.
 Total Height, 4 ft.

Die all axed, or face polished, with back, top and ends axed. Bottom base, axed wash, balance rocked.

Holbrook Cemetery Stone



Design No. 1620

1620-A

Die . . . 2.6x0.6 x1.10
 B. B. . . . 3.0x0.10x0.6
 Estimated Weight, 625 lbs.
 Total Height, 2 ft. 4 in.

1620-B

Die 3.0x0.8x2.2
 B. B. . . . 3.8x1.2x0.8
 Estimated Weight, 1260 lbs.
 Total Height, 2 ft. 10 in.

1620-C

Die 3.6x0.10x2.8
 B. B. . . . 4.4x1.6 x0.10
 Estimated Weight, 2340 lbs.
 Total Height, 3 ft. 6 in.

1620-D

Die 4.0x1.0 x3.0
 B. B. . . . 5.0x1.10x1.0
 Estimated Weight, 3750 lbs.
 Total Height, 4 ft.

Die, polished face, rocked top, back and ends. Bottom base, axed wash, balance rocked.

Rev. Francis M. Esterbrook (1842-1926) & Eva Riley Esterbrook (1844-1927)



Design No. 1622

1622-A

Die 2.6x0.6 x1.10
 B. B. . . . 3.0x0.10x0.6
 Estimated Weight, 625 lbs.
 Total Height, 2 ft. 4 in.

1622-B

Die 3.0x0.8x2.2
 B. B. . . . 3.8x1.2x0.8
 Estimated Weight, 1260 lbs.
 Total Height, 2 ft. 10 in.

1622-C

Die 3.6x0.10x2.8
 B. B. . . . 4.4x1.6 x0.10
 Estimated Weight, 2340 lbs.
 Total Height, 3 ft. 6 in.

1622-D

Die 4.0x1.0 x3.0
 B. B. . . . 5.0x1.10x1.0
 Estimated Weight, 3750 lbs.
 Total Height, 4 ft.

Die, polished face, axed top, rocked back and ends. Bottom base, axed wash, balance rocked.

Hummel Cemetery Stone



Design No. 1624

1624-A

Die 2.6x0.6 x2.0
 B. B. 3.0x0.10x0.6
 Estimated Weight, 640 lbs.
 Total Height 2 ft. 6 in.

1624-B

Die 3.0x0.8x2.4
 B. B. 3.8x1.2x0.8
 Estimated Weight, 1275 lbs.
 Total Height, 3 ft.

1624-C

Die 3.6x0.10x2.10
 B. B. 4.4x1.6 x0.10
 Estimated Weight, 2350 lbs.
 Total Height, 3 ft. 8 in.

1624-D

Die 4.0x1.0 x3.2
 B. B. 5.0x1.10x1.0
 Estimated Weight, 3800 lbs.
 Total Height, 4 ft. 2 in.

Die, polished face, axed top, rocked back and ends. Bottom base, axed wash, balance rocked.

Krause Cemetery Stone



Design No. 1626

1626-A

Die 2.6x0.6 x1.10
 B. B. . . . 3.0x0.10x0.6
 Estimated Weight, 625 lbs.
 Total Height, 2 ft. 4 in.

1626-B

Die 3.0x0.8x2.2
 B. B. . . . 3.8x1.2x0.8
 Estimated Weight, 1260 lbs.
 Total Height, 2 ft. 10 in.

1626-C

Die 3.6x0.10x2.8
 B. B. . . . 4.4x1.6 x0.10
 Estimated Weight, 2340 lbs.
 Total Height, 3 ft. 6 in.

1626-D

Die 4.0x1.0 x3.0
 B. B. . . . 5.0x1.10x1.0
 Estimated Weight, 3750 lbs.
 Total Height, 4 ft.

Die, polished face, axed top, rocked back and ends. Bottom base, axed wash, balance rocked.

Solfelt Cemetery Stone



Design No. 1628

1628-A

Die 2.6x0.6 x1.10
B. B. . . . 3.0x0.10x0.6
Estimated Weight, 625 lbs.
Total Height, 2 ft. 4 in.

1628-B

Die 3.0x0.8x2.2
B. B. . . . 3.8x1.2x0.8
Estimated Weight, 1260 lbs.
Total Height, 2 ft. 10 in.

1628-C

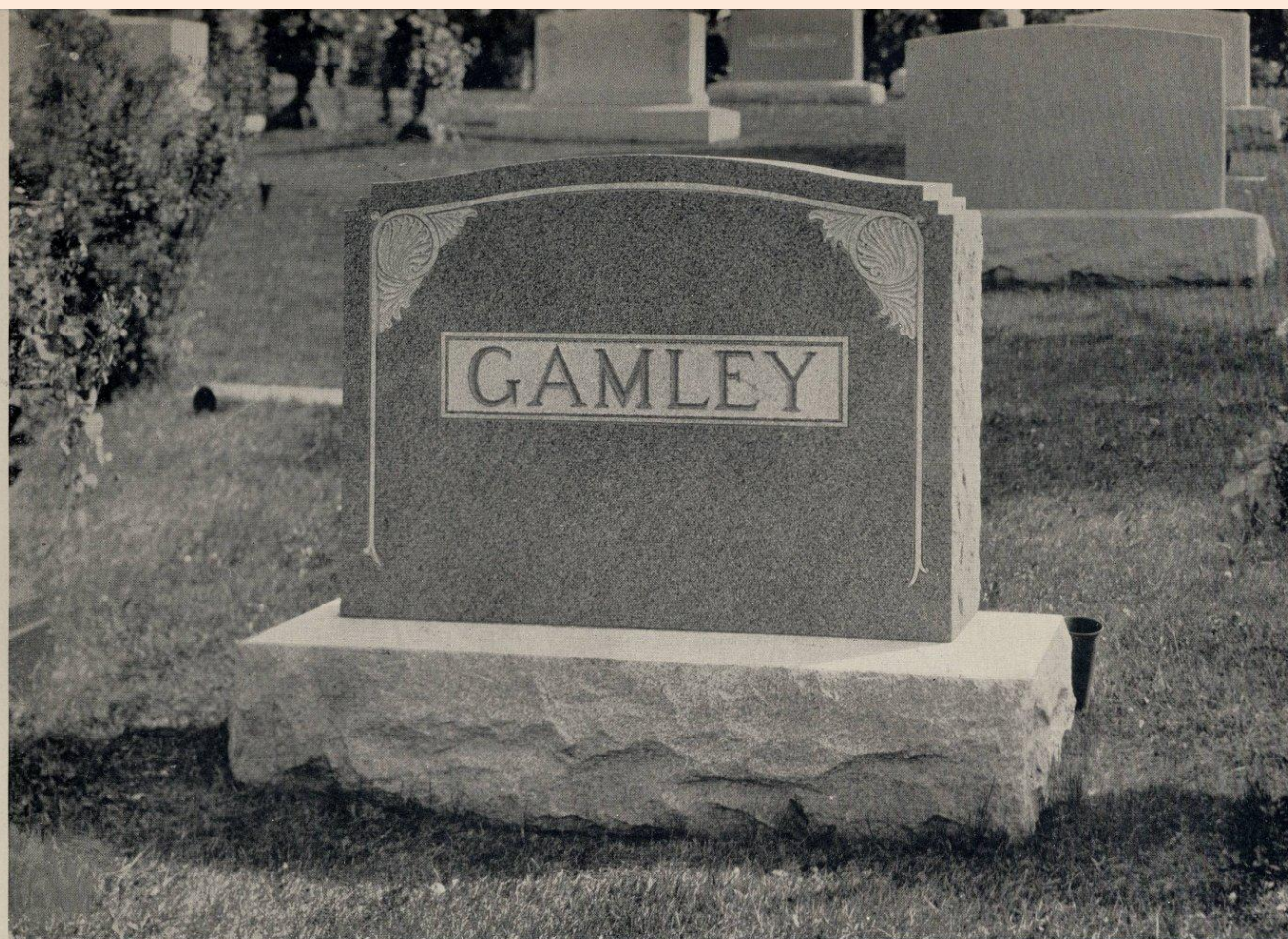
Die 3.6x0.10x2.8
B. B. . . . 4.4x1.6 x0.10
Estimated Weight, 2340 lbs.
Total Height, 3 ft. 6 in.

1628-D

Die 4.0x1.0 x3.0
B. B. . . . 5.0x1.10x1.0
Estimated Weight, 3750 lbs.
Total Height, 4 ft.

Die, face polished, back, top and ends rocked. Bottom base, axed wash and margin, balance rocked.

George G. Smith (4/13/1861-1/24/1927) & Louisa D. Smith (2/22/1867-12/4/1927)



Design No. 1630

1630-A

Die 2.6x0.6 x1.10
 B. B. 3.0x0.10x0.6
 Estimated Weight, 625 lbs.
 Total Height, 2 ft. 4 in.

1630-B

Die 3.0x0.8x2.2
 B. B. 3.8x1.2x0.8
 Estimated Weight, 1260 lbs.
 Total Height, 2 ft. 10 in.

1630-C

Die 3.6x0.10x2.8
 B. B. 4.4x1.6 x0.10
 Estimated Weight, 2340 lbs.
 Total Height, 3 ft. 6 in.

1630-D

Die 4.0x1.0 x3.0
 B. B. 5.0x1.10x1.0
 Estimated Weight, 3750 lbs.
 Total Height, 4 ft.

Die, polished face, axed top, rocked back and ends. Bottom base, axed wash, balance rocked.

Gamley Cemetery Stone



Design No. 1632

1632-A

Die 2.6x0.6 x1.10
 B. B. . . . 3.0x0.10x0.6
 Estimated Weight, 625 lbs.
 Total Height, 2 ft. 4 in.

1632-B

Die 3.0x0.8x2.2
 B. B. . . . 3.8x1.2x0.8
 Estimated Weight, 1260 lbs.
 Total Height, 2 ft. 10 in.

1632-C

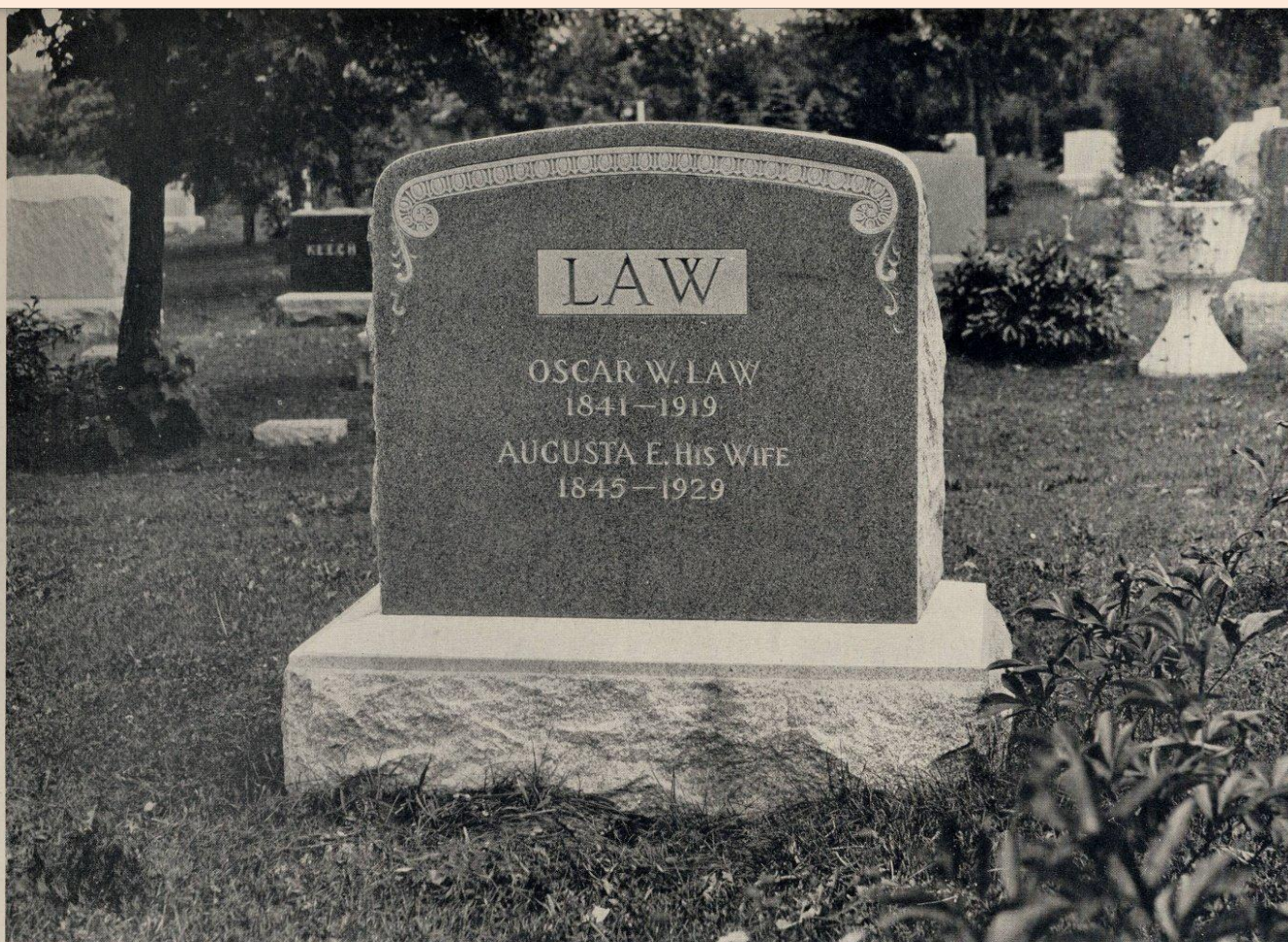
Die 3.6x0.10x2.8
 B. B. . . . 4.4x1.6 x0.10
 Estimated Weight, 2340 lbs.
 Total Height, 3 ft. 6 in.

1632-D

Die 4.0x1.0 x3.0
 B. B. . . . 5.0x1.10x1.0
 Estimated Weight, 3750 lbs.
 Total Height, 4 ft.

Die, polished face, axed top, rocked back and ends. Bottom base, axed wash and margin, balance rocked.

Wright Cemetery Stone



Design No. 1634

1634-A

Die 2.6x0.6 x1.10
 B. B. . . . 3.0x0.10x0.6
 Estimated Weight, 625 lbs.
 Total Height, 2 ft. 4 in.

1634-B

Die 3.0x0.8x2.2
 B. B. . . . 3.8x1.2x0.8
 Estimated Weight, 1260 lbs.
 Total Height, 2 ft. 10 in.

1634-C

Die 3.6x0.10x2.8
 B. B. . . . 4.4x1.6 x0.10
 Estimated Weight, 2340 lbs.
 Total Height, 3 ft. 6 in.

1634-D

Die 4.0x1.0 x3.0
 B. B. . . . 5.0x1.10x1.0
 Estimated Weight, 3750 lbs.
 Total Height, 4 ft.

Die, polished face, axed top, rocked back and ends. Bottom base, axed wash and margin, balance rocked.

Oscar W. Law (1841-1919) & Augusta E. Law, His Wife (1845-1929)



Design No. 1636

1636-A

Die 2.0x0.6 x2.0
 B. B. . . . 2.6x0.10x0.6
 Estimated Weight, 540 lbs.
 Total Height, 2 ft. 6 in.

1636-B

Die 2.6x0.8x2.6
 B. B. . . . 3.0x1.0x0.8
 Estimated Weight, 1100 lbs.
 Total Height, 3 ft. 2 in.

1636-C

Die 3.0x0.10x3.0
 B. B. . . . 3.8x1.4 x0.10
 Estimated Weight, 2050 lbs.
 Total Height, 3 ft. 10 in.

1636-D

Die 3.6x1.0 x3.6
 B. B. . . . 4.6x1.10x1.0
 Estimated Weight, 3675 lbs.
 Total Height, 4 ft. 6 in.

Die, polished face, axed top, rocked back and ends. Bottom base, axed wash, balance rocked.

Arnsmeier Cemetery Stone



Design No. 1638

1638-A

Die 3.0x0.6x2.0
 B. B. . . . 3.8x1.0x0.6
 Estimated Weight, 860 lbs.
 Total Height, 2 ft. 6 in.

1638-B

Die 3.4x0.8x2.2
 B. B. . . . 4.0x1.2x0.8
 Estimated Weight, 1425 lbs.
 Total Height, 2 ft. 10 in.

1638-C

Die 3.6x0.10x2.4
 B. B. . . . 4.4x1.6 x0.10
 Estimated Weight, 2200 lbs.
 Total Height, 3 ft. 2 in.

1638-D

Die 4.0x1.0 x2.8
 B. B. . . . 5.0x1.10x1.0
 Estimated Weight, 3500 lbs.
 Total Height, 3 ft. 8 in.

Die, polished face, axed top, rocked back and ends. Bottom base, axed wash and margin, balance rocked.

Weathers Cemetery Stone



Design No. 1640

1640-A

Die 3.0x0.6x2.0
 B. B. . . . 3.8x1.0x0.6
 Estimated Weight, 860 lbs.
 Total Height, 2 ft. 6 in.

1640-B

Die 3.4x0.8x2.2
 B. B. . . . 4.0x1.2x0.8
 Estimated Weight, 1425 lbs.
 Total Height, 2 ft. 10 in.

1640-C

Die 3.6x0.10x2.4
 B. B. . . . 4.4x1.6 x0.10
 Estimated Weight, 2200 lbs.
 Total Height, 3 ft. 2 in.

1640-D

Die 4.0x1.0 x2.8
 B. B. . . . 5.0x1.10x1.0
 Estimated Weight, 3500 lbs.
 Total Height, 3 ft. 8 in.

Die, polished face and back, top and ends axed. Bottom base, axed wash and margin, balance rocked.

Zillmer Cemetery Stone



Design No. 1642

1642-A

Die 3.4x0.6x1.10
 B. B. . . . 4.0x1.0x0.6
 Estimated Weight, 900 lbs.
 Total Height, 2 ft. 4 in.

1642-B

Die 3.6x0.8x2.0
 B. B. . . . 4.2x1.2x0.8
 Estimated Weight, 1425 lbs.
 Total Height, 2 ft. 8 in.

1642-C

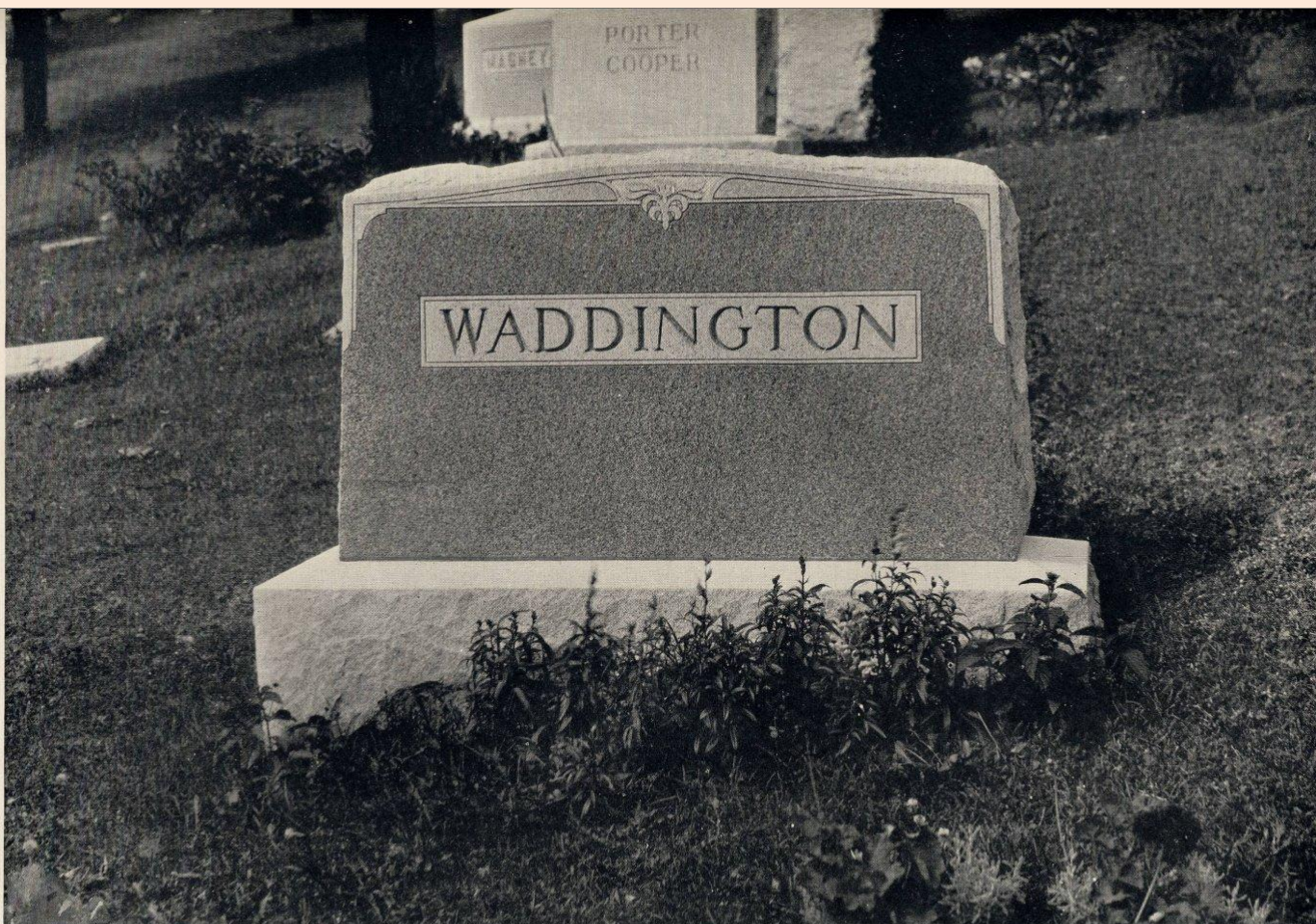
Die 4.0 x0.10x2.8
 B. B. . . . 4.10x1.6 x0.10
 Estimated Weight, 2700 lbs.
 Total Height, 3 ft. 6 in.

1642-D

Die 4.6x1.0 x3.0
 B. B. . . . 5.6x1.10x1.0
 Estimated Weight, 4200 lbs.
 Total Height, 4 ft.

Die, polished face and back, top and ends axed. Bottom base, axed wash and margin, balance rocked.

Seymer Cemetery Stone



Design No. 1644

1644-A

Die 3.4x0.6x1.10
 B. B. . . . 4.0x1.0x0.6
 Estimated Weight, 900 lbs.
 Total Height, 2 ft. 4 in.

1644-B

Die 3.6x0.8x2.0
 B. B. . . . 4.2x1.2x0.8
 Estimated Weight 1425 lbs.
 Total Height, 2 ft. 8 in.

1644-C

Die 4.0 x0.10x2.8
 B. B. . . . 4.10x1.6 x0.10
 Estimated Weight, 2700 lbs.
 Total Height, 3 ft. 6 in.

1644-D

Die 4.6x1.0 x3.0
 B. B. . . . 5.6x1.10x1.0
 Estimated Weight, 4200 lbs.
 Total Height, 4 ft.

Die, polished face, rocked top, back and ends. Bottom base, axed wash, balance rocked.

Waddington Cemetery Stone



Design No. 1646

1646-A

Die . . . 2.2x0.6 x1.10
 B. B. . . . 2.8x0.10x0.6
 Estimated Weight, 540 lbs.
 Total Height, 2 ft. 4 in.

1646-B

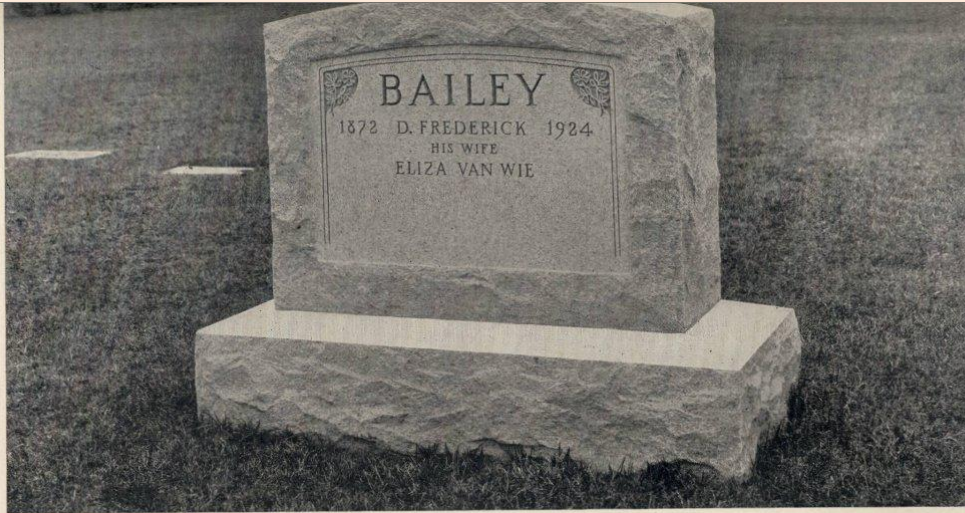
Die 2.8x0.8x2.4
 B. B. . . . 3.2x1.0x0.8
 Estimated Weight, 1100 lbs.
 Total Height, 3 ft.

1646-C

Die 3.0x0.10x2.8
 B. B. . . . 3.8x1.4 x0.10
 Estimated Weight, 1900 lbs.
 Total Height, 3 ft. 6 in.

Die, polished face, axed top, rocked back and ends. Bottom base, axed wash, balance rocked.

Twiname Cemetery Stone



1650-A

Die 2.6x0.6 x2.0
B. B. 3.0x0.10x0.6
Estimated Weight, 675 lbs.
Total Height, 2 ft. 6 in.

1650-B

Die 2.6x0.8x2.0
B. B. 3.0x1.2x0.8
Estimated Weight, 1125 lbs.
Total Height, 2 ft. 8 in.

1650-C

Die 3.0x1.0x2.6
B. B. 3.6x1.6x1.0
Estimated Weight, 2250 lbs.
Total Height, 3 ft. 6 in.

1650-D

Die 3.6x1.0x2.10
B. B. 4.2x1.8x1.0
Estimated Weight, 3000 lbs.
Total Height, 3 ft. 10 in.

Die, rocked faces and ends, top axed. Axed panel on front face only for letters. Bottom base, axed wash, balance rocked.

Link Design No. 1652

1652-A

Die 1.8x0.6 x1.10
B. B. 2.2x0.10x0.6
Estimated Weight, 420 lbs.
Total Height, 2 ft. 4 in.

1652-B

Die 1.10x0.6 x2.0
B. B. 2.2 x0.10x0.6
Estimated Weight, 680 lbs.
Total Height, 2 ft. 6 in.

1652-C

Die 1.10x0.8x2.2
B. B. 2.6 x1.2x0.8
Estimated Weight, 1025 lbs.
Total Height, 2 ft. 10 in.

1652-D

Die 2.0x0.8x2.4
B. B. 2.8x1.2x0.8
Estimated Weight, 1100 lbs.
Total Height, 3 ft.

1652-E

Die 2.2 x0.10x2.6
B. B. 2.10x1.4 x0.10
Estimated Weight, 1275 lbs.
Total Height, 3 ft. 4 in.

Die, polished face, axed top, rocked back and ends. Bottom base, axed wash, balance rocked.



D. Frederick Bailey (1872-1924) and His Wife Eliza Van Wie Bailey & the Link Cemetery Stone



Design No. 1654

1654-A

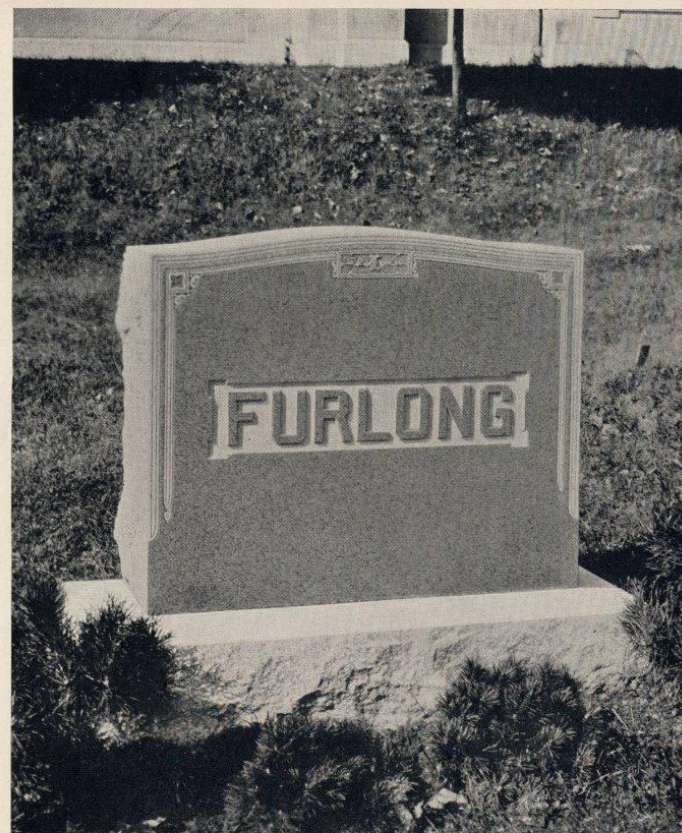
Die 2.0x0.6 x1.10
B. B. . . . 2.6x0.10x0.6
Estimated Weight, 540 lbs.
Total Height, 2 ft. 4 in.

1654-B

Die 2.6x0.8x2.4
B. B. . . . 3.0x1.0x0.8
Estimated Weight, 1050 lbs.
Total Height, 3 ft. 2 in.

1654-C

Die 3.0x0.10x2.8
B. B. . . . 3.8x1.4 x0.10
Estimated Weight, 1900 lbs.
Total Height, 3 ft. 6 in.



Design No. 1656

1656-A

Die 2.2x0.6 x1.10
B. B. . . . 2.8x0.10x0.6
Estimated Weight, 540 lbs.
Total Height, 2 ft. 4 in.

1656-B

Die 2.8x0.8x2.4
B. B. . . . 3.2x1.0x0.8
Estimated Weight, 1100 lbs.
Total Height, 3 ft.

1656-C

Die 3.0x0.10x2.8
B. B. . . . 3.8x1.4 x0.10
Estimated Weight, 1900 lbs.
Total Height, 3 ft. 6 in.

Die, polished face, axed top, rocked back and ends. Bottom base, axed wash, balance rocked.

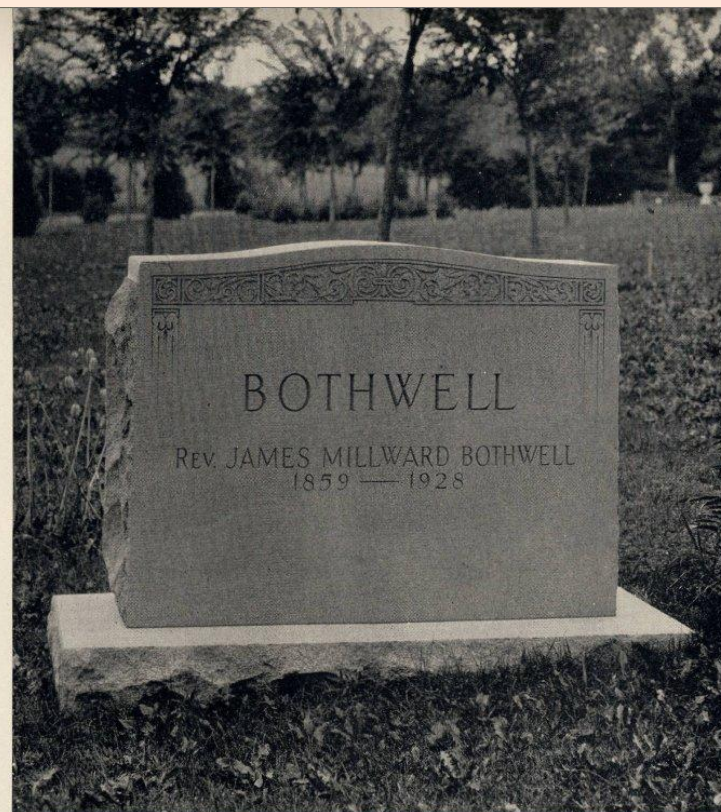
The Knight & Furlong Cemetery Stones



Design No. 1658

1658-A	1658-B	1658-C
Die 1.6x0.6 x2.2	Die 1.8x0.6 x2.4	Die 1.10x0.8x2.6
B. B. . . . 2.0x0.10x0.6	B. B. . . . 2.2x0.10x0.6	B. B. . . . 2.6 x1.2x0.8
Estimated Weight, 460 lbs.	Estimated Weight, 680 lbs.	Estimated Weight, 1025 lbs.
Total Height, 2 ft. 8 in.	Total Height, 2 ft. 10 in.	Total Height, 3 ft. 2 in.
1658-D	1658-E	
Die 2.0x0.8x2.10	Die 2.0x0.10x2.10	
B. B. . . . 2.8x1.2x0.8	B. B. . . . 2.8x1.2 x0.10	
Estimated Weight, 1125 lbs.	Estimated Weight, 1275 lbs.	
Total Height, 3 ft. 6 in.	Total Height, 3 ft. 8 in.	

Die, polished face, axed top, rocked back and ends. Bottom base, axed wash, balance rocked.



Design No. 1660

1660-A	1660-B
Die 2.6x0.6 x1.10	Die 3.0x0.8x2.2
B. B. . . . 3.0x0.10x0.6	B. B. . . . 3.8x1.2x0.8
Estimated Weight, 625 lbs.	Estimated Weight, 1260 lbs.
Total Height, 2 ft. 4 in.	Total Height, 2 ft. 10 in.
1660-C	1660-D
Die 3.6x0.10x2.8	Die 4.0x1.0 x3.0
B. B. . . . 4.4x1.6 x0.10	B. B. . . . 5.0x1.10x1.0
Estimated Weight, 2340 lbs.	Estimated Weight, 3750 lbs.
Total Height, 3 ft. 6 in.	Total Height, 4 ft.

Die, face axed or polished, top axed, back and ends rocked. Bottom base, axed wash, balance rocked.

Rev. James Millward Bothwell (1859-1928) & the Bautch Cemetery Stone



Design No. 1662

1662-A

Tablet 1.6x0.6x2.6
Estimated Weight, 340 lbs.

1662-C

Tablet 1.10x0.8x4.4
Estimated Weight, 950 lbs.

1662-E

Tablet 2.6x1.0x6.0
Estimated Weight, 2700 lbs.

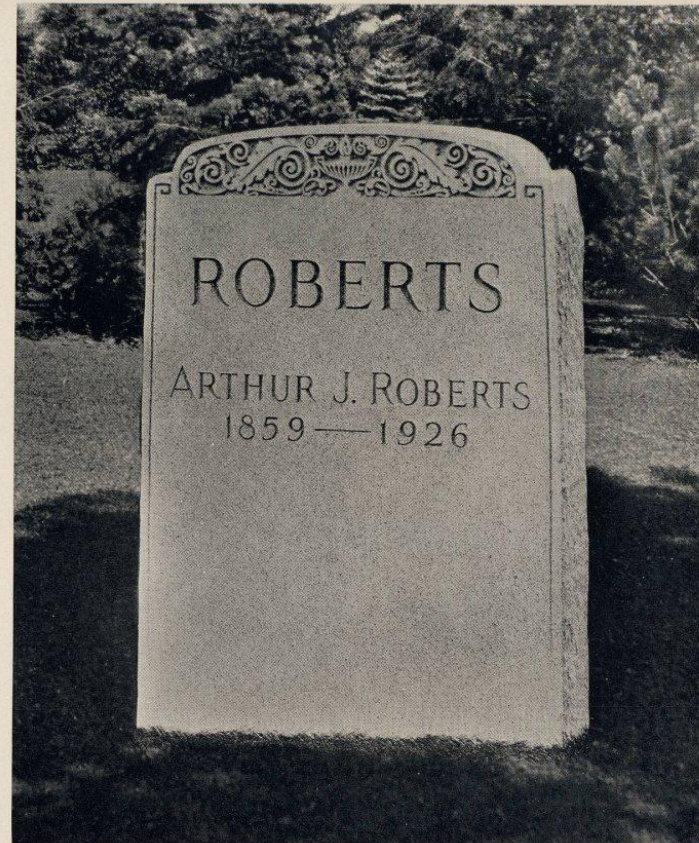
1662-B

Tablet 1.6x0.6x3.6
Estimated Weight, 470 lbs.

1662-D

Tablet 2.2x0.10x5.3
Estimated Weight, 1675 lbs.

Tablet, polished face, axed top, rocked back and ends.



Design No. 1664

1664-A

Tablet 1.6x0.6x2.6
Estimated Weight, 340 lbs.

1664-B

Tablet 2.0x0.8x3.3
Estimated Weight, 750 lbs.

1664-C

Tablet 2.6x0.10x3.8
Estimated Weight, 1400 lbs.

Face polished or axed, top axed, back and ends rocked.

Arthur J. Roberts (1859-1926) & the Hastings Cemetery Stone



Design No. 1666

1666-A

Die 2.6x0.6x0.10
B. B. 3.0x1.0x0.6
Estimated Weight, 500 lbs.
Total Height, 1 ft. 4 in.

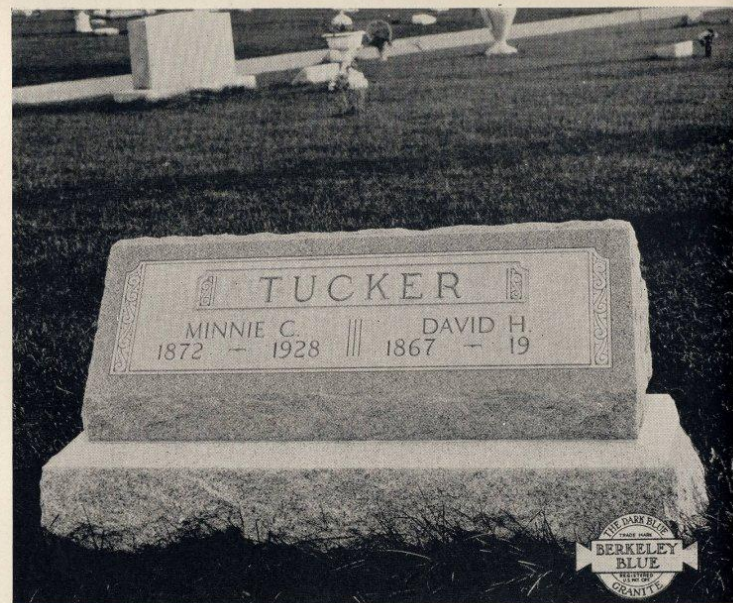
1666-B

Die 3.0x0.8x1.0
B. B. 3.6x1.2x0.8
Estimated Weight, 825 lbs.
Total Height, 1 ft. 8 in.

1666-C

Die 3.6x0.10x1.2
B. B. 4.0x1.4 x0.10
Estimated Weight, 1400 lbs.
Total Height, 2 ft.

Die, polished slant face and heel, axed nose, rocked back and ends.
Bottom base, axed wash and margin, balance rocked.



Design No. 1668

1668-A

Die 2.6x0.6x0.10
B. B. 3.0x1.0x0.6
Estimated Weight, 500 lbs.
Total Height, 1 ft. 4 in.

1668-B

Die 3.0x0.8x1.0
B. B. 3.6x1.2x0.8
Estimated Weight, 825 lbs.
Total Height, 1 ft. 8 in.

1668-C

Die 3.6x0.10x1.2
B. B. 4.0x1.4 x0.10
Estimated Weight, 1400 lbs.
Total Height, 2 ft.

Die, polished slant face, rocked nose, heel, back and ends. Bottom
base, axed wash, balance rocked.

Martin L. McDaniel (1879-1919) and Estella M. McDaniel (1883-1928)

Minnie C. Tucker (1872-1928) and David H. Tucker (1867-1919)



Design No. 1696

1696-A

Slab 6.0x3.0x0.6
Estimated Weight, 1600 lbs.

1696-B

Slab 6.6x3.0x0.6
Estimated Weight, 1750 lbs.

1696-C

Slab 7.0x3.0x0.6
Estimated Weight, 1800 lbs.

1696-D

Slab 6.0x3.0x0.8
Estimated Weight, 2160 lbs.

1696-E

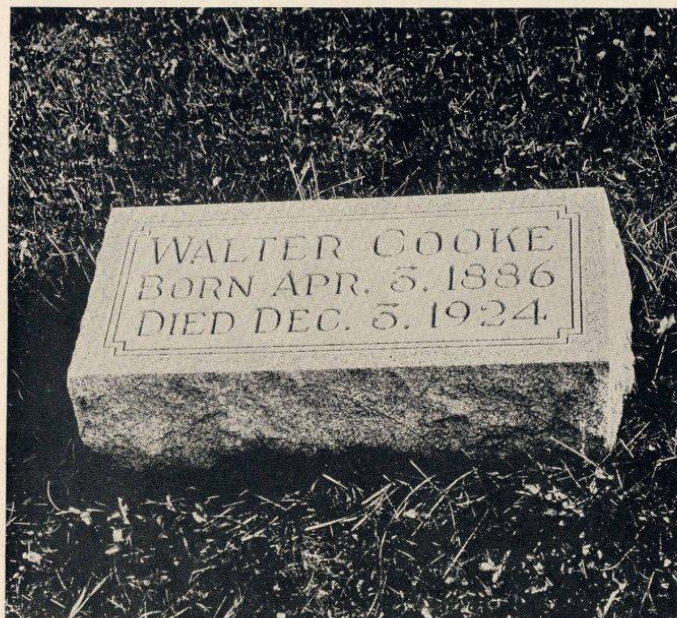
Slab 6.6x3.0x0.8
Estimated Weight, 2340 lbs.

1696-F

Slab 7.0x3.0x0.8
Estimated Weight, 2500 lbs.

Top polished, sides and ends rocked, edges square. Bronze emblem will be left off. Can leave off cross if desired.

Otto Nielson (?) Cemetery Stone



Design No. 1698

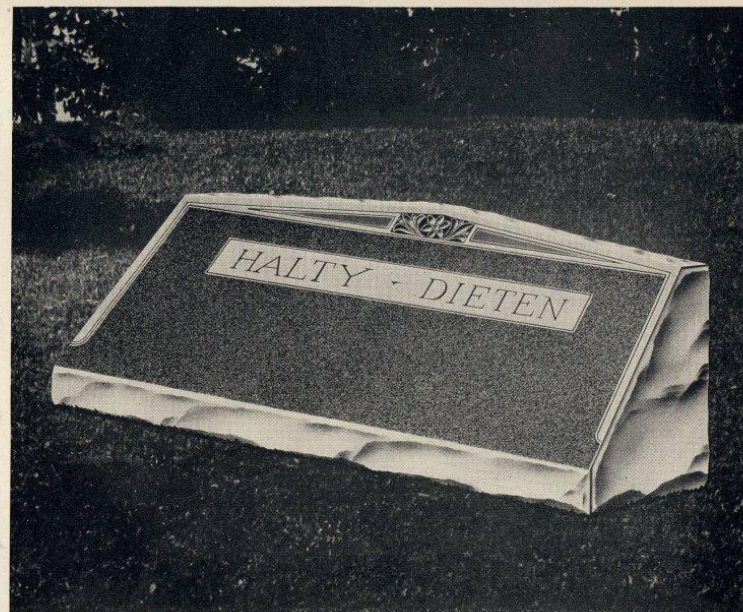
1698-A
Marker . . . 1.6x0.8x0.6
Estimated Weight, 90 lbs.

1698-B
Marker . . . 1.8x0.10x0.8
Estimated Weight, 160 lbs.

1698-C
Marker . . . 1.10x1.0x0.10
Estimated Weight, 260 lbs.

1698-D
Marker . . . 2.0x1.0x1.0
Estimated Weight, 350 lbs.

Polished bevel top, balance rocked.



Design No. 1700

1700-A
Marker . . . 2.6x0.6x0.10
Estimated Weight, 190 lbs.

1700-B
Marker . . . 3.0x0.8x1.0
Estimated Weight, 350 lbs.

1700-C
Marker . . . 3.6x0.10x1.2
Estimated Weight, 600 lbs.

1700-D
Marker . . . 4.0x1.0x1.4
Estimated Weight, 925 lbs.

Polished slant face, balance rocked.

Walter Cooke (4/3/1886-12/3/1924) & the Halty - Dieten Cemetery Stone





Price List
for
Special Granite
Designs

No. 16



No. 16 - H



Design Number	Finished as shown in De- sign Book	Finished as shown in De- sign Book, ex- cept no mar- gin line on B. B.	Face & back polished. Ends rocked. Top axed. B. B. all rocked	Die all polished except axed top. B. B. all rocked	Die all polished except axed top. B. B. all axed	Face of die polished. Balance of die axed. B. B. all axed	Top of die axed. Balance as shown.
1600-A	\$103.00	\$ 92.00	\$108.00	\$113.00	\$126.00	\$121.00	
1600-B	127.00	115.00	131.00	136.00	157.00	154.00	
1600-C	142.00	128.00	143.00	163.00	172.00	168.00	
1600-D	155.00	140.00	161.00	173.00	193.00	190.00	
1600-E	175.00	158.00	178.00	191.00	218.00	214.00	
1602-A	82.00		102.00	110.00	121.00	118.00	\$ 90.00
1602-B	118.00		132.00	144.00	157.00	154.00	120.00
1602-C	137.00		146.00	157.00	172.00	168.00	132.00
1602-D	145.00		158.00	172.00	188.00	185.00	144.00
1602-E	151.00		170.00	186.00	203.00	198.00	156.00
1604-A	82.00		96.00	103.00	126.00	122.00	
1604-B	112.00		126.00	136.00	157.00	154.00	
1604-C	116.00		132.00	144.00	163.00	158.00	
1604-D	122.00		141.00	154.00	173.00	167.00	
1604-E	140.00		158.00	174.00	204.00	192.00	
1606-A	104.00	94.00	109.00	118.00	131.00	127.00	
1606-B	145.00	134.00	155.00	170.00	187.00	181.00	
1606-C	155.00	138.00	161.00	174.00	190.00	186.00	
1606-D	166.00	148.00	168.00	182.00	200.00	192.00	
1606-E	252.00	230.00	254.00	275.00	313.00	308.00	
1608-A	79.00		92.00	100.00	112.00	108.00	
1608-B	116.00		126.00	133.00	150.00	144.00	
1608-C	121.00		134.00	145.00	161.00	155.00	
1608-D	134.00		156.00	163.00	187.00	186.00	
1608-E	156.00		174.00	190.00	217.00	208.00	
1610-A	128.00	118.00	133.00	142.00	162.00	158.00	
1610-B	142.00	127.00	143.00	151.00	175.00	170.00	
1610-C	192.00	174.00	187.00	200.00	227.00	222.00	
1612-A	78.00		96.00	103.00	126.00	122.00	\$ 84.00
1612-B	100.00		126.00	139.00	157.00	154.00	112.00
1612-C	107.00		134.00	144.00	167.00	164.00	120.00
1612-D	113.00		146.00	158.00	180.00	178.00	132.00
1612-E	119.00		158.00	174.00	204.00	192.00	140.00

Design Number	Finished as shown in Design Book	Finished as shown in Design Book, except no margin line on B. B.	Face & back polished. Ends rocked. Top axed. B. B. all rocked	Die all polished except axed top, B. B. all rocked	Die all polished except axed top, B. B. all axed	Face of die polished. Balance of die axed. B. B. all axed	Top of die axed. Balance as shown.
1614-A	\$126.00	\$115.00	\$133.00	\$140.00	\$162.00	\$158.00	
1614-B	176.00	162.00	182.00	193.00	220.00	215.00	
1614-C	247.00	219.00	256.00	268.00	308.00	299.00	
1616-A	134.00		154.00	161.00	185.00	180.00	
1616-B	186.00		209.00	218.00	253.00	244.00	
1616-C	289.00		322.00	343.00	397.00	385.00	
1616-D	430.00		469.00	490.00	563.00	547.00	
1618-A	176.00		176.00	187.00	211.00	207.00	
1618-B	224.00		214.00	238.00	264.00	258.00	
1618-C	352.00		336.00	361.00	389.00	380.00	
1618-D	449.00		430.00	461.00	504.00	487.00	
1620-A	119.00		150.00	158.00	182.00	178.00	\$126.00
1620-B	160.00		208.00	218.00	252.00	244.00	176.00
1620-C	263.00		334.00	349.00	403.00	390.00	278.00
1620-D	377.00		463.00	484.00	556.00	538.00	394.00
1622-A	136.00		155.00	162.00	186.00	180.00	
1622-B	185.00		208.00	217.00	252.00	242.00	
1622-C	298.00		330.00	346.00	400.00	384.00	
1622-D	424.00		463.00	484.00	556.00	538.00	
1624-A	136.00		155.00	162.00	186.00	180.00	
1624-B	185.00		208.00	217.00	252.00	242.00	
1624-C	298.00		330.00	346.00	400.00	384.00	
1624-D	424.00		463.00	484.00	556.00	538.00	
1626-A	136.00		155.00	162.00	186.00	180.00	
1626-B	185.00		208.00	217.00	252.00	242.00	
1626-C	298.00		330.00	346.00	400.00	384.00	
1626-D	424.00		463.00	484.00	556.00	538.00	

Design Number	Finished as shown in Design Book	Finished as shown in Design Book, except no margin line on B. B.	Face & back polished. Ends rocked. Top axed. B. B. all rocked	Die all polished except axed top. B. B. all rocked	Die all polished except axed top. B. B. all axed	Face of die polished. Balance of die axed. B. B. all axed	Top of die axed. Balance as shown.
1628-A	\$138.00	\$127.00	\$164.00	\$172.00	\$196.00	\$191.00	\$133.00
1628-B	179.00	164.00	211.00	240.00	254.00	246.00	173.00
1628-C	282.00	265.00	334.00	348.00	402.00	390.00	277.00
1628-D	401.00	380.00	464.00	486.00	558.00	546.00	396.00
1630-A	136.00		155.00	162.00	186.00	180.00	
1630-B	185.00		208.00	217.00	252.00	242.00	
1630-D	298.00		330.00	346.00	400.00	384.00	
1630-D	424.00		463.00	484.00	556.00	538.00	
1632-A	152.00	142.00	161.00	168.00	192.00	187.00	
1632-B	192.00	178.00	199.00	210.00	244.00	235.00	
1632-C	304.00	287.00	319.00	335.00	389.00	377.00	
1632-D	426.00	437.00	444.00	464.00	538.00	522.00	
1634-A	156.00	142.00	161.00	168.00	192.00	187.00	
1634-B	203.00	185.00	208.00	217.00	252.00	244.00	
1634-C	322.00	300.00	329.00	346.00	398.00	384.00	
1634-D	445.00	420.00	460.00	480.00	553.00	538.00	
1636-A	118.00		134.00	140.00	162.00	157.00	
1636-B	169.00		190.00	197.00	215.00	208.00	
1636-C	272.00		304.00	310.00	349.00	340.00	
1636-D	400.00		439.00	463.00	529.00	514.00	
1638-A	187.00	173.00	198.00	206.00	238.00	233.00	
1638-B	214.00	196.00	220.00	229.00	268.00	259.00	
1638-C	284.00	263.00	290.00	305.00	359.00	347.00	
1638-D	394.00	368.00	400.00	419.00	491.00	476.00	
1640-A	226.00	211.00	206.00	211.00	239.00	230.00	
1640-B	250.00	232.00	237.00	232.00	262.00	254.00	
1640-C	343.00	322.00	311.00	322.00	366.00	354.00	
1640-D	480.00	445.00	428.00	541.00	493.00	486.00	
1642-A	232.00	217.00	210.00	217.00	247.00	242.00	
1642-B	245.00	227.00	218.00	227.00	256.00	248.00	
1642-C	394.00	372.00	356.00	372.00	416.00	404.00	
1642-D	529.00	504.00	484.00	504.00	563.00	547.00	

Design Number	Finished as shown in Design Book	Finished as shown in Design Book, except no margin line on B. B.	Face & back polished. Ends rocked. Top axed. B. B. all rocked	Die all polished except axed top. B. B. all rocked	Die all polished except axed top. B. B. all axed	Face of die polished. Balance of die axed. B. B. all axed	Top of die axed. Balance as shown.
1644-A	\$154.00		\$186.00	\$193.00	\$230.00	\$226.00	\$170.00
1644-B	176.00		208.00	216.00	256.00	247.00	196.00
1644-C	298.00		361.00	376.00	436.00	413.00	325.00
1644-D	412.00		468.00	488.00	568.00	552.00	428.00
1646-A	115.00		133.00	140.00	163.00	158.00	
1646-B	168.00		190.00	200.00	235.00	229.00	
1646-C	228.00		254.00	269.00	310.00	298.00	
1650-A	150.00						
1650-B	160.00						
1650-C	258.00						
1650-D	295.00						
1652-A	79.00		92.00	100.00	112.00	108.00	
1652-B	110.00		126.00	133.00	150.00	144.00	
1652-C	121.00		134.00	145.00	161.00	155.00	
1652-D	128.00		144.00	154.00	172.00	164.00	
1652-E	156.00		174.00	190.00	227.00	208.00	
1654-A	114.00		131.00	139.00	157.00	154.00	
1654-B	158.00		179.00	190.00	216.00	210.00	
1654-C	264.00		305.00	328.00	395.00	384.00	
1656-A	115.00		132.00	140.00	160.00	158.00	
1656-B	164.00		185.00	196.00	222.00	217.00	
1656-C	233.00		259.00	271.00	312.00	302.00	
1658-A	91.00		102.00	110.00	121.00	118.00	
1658-B	128.00		132.00	144.00	157.00	154.00	
1658-C	137.00		146.00	157.00	172.00	168.00	
1658-D	144.00		160.00	172.00	188.00	185.00	
1658-E	170.00		179.00	186.00	203.00	197.00	
1660-A	136.00		155.00	162.00	186.00	180.00	
1660-B	185.00		208.00	217.00	252.00	242.00	
1660-C	298.00		330.00	346.00	400.00	384.00	
1660-D	424.00		463.00	484.00	556.00	538.00	

[illegible]



DIFFERENT FINISHES

In this price list we are making prices on each monument in several different finishes. With this price list you can make your customers a price on these monuments finished in almost every manner.

