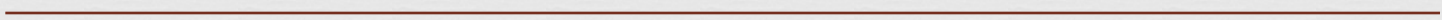


California Quarries from 1914 to Present-Day



California Quarries from 1914 to Present-Day



FIG. 12. J. M. Nelson quarry, near Cordelia, Solano County. General view of crushing and screening plant and stock pile of crushed basalt.

J.M. Nelson quarry, near Cordelia, Solano County.
General view of crushing and screening plant and stock pile of crushed basalt.

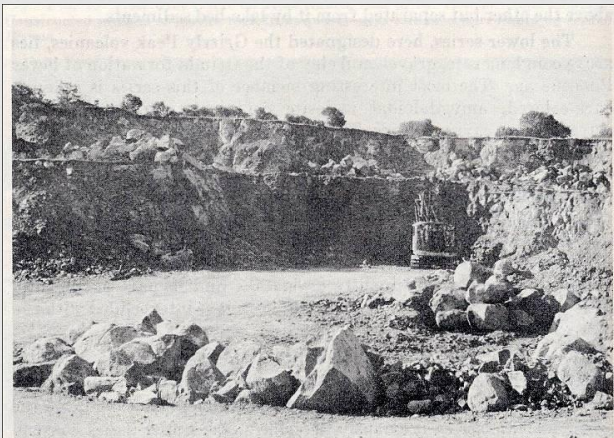


FIG. 13. J. M. Nelson quarry. Rock is olivine basalt in flat-lying flows associated with tuffs and breccia. The basalt is now being quarried for crushed rock. Formerly used in making paving blocks.

J.M. Nelson quarry. Rock is olivine basalt in flat-lying flows associated with tuffs and breccia. The basalt is now being quarried for crushed rock. Formerly used in making paving blocks

California Quarries from 1914 to Present-Day (Contd.)



FIG. 1. Pacific Coast Aggregates Company operation near Livermore, Alameda County. Rock, sand, and gravel are scraped from surface deposits by heavy earth-moving equipment, each unit carrying 20 tons. Material is gathered in a sub-surface hopper, fed onto a conveyor belt, and run through a washing, screening, and crushing plant. Sized material is then sent to stock piles via conveyor belts. Belt conveyors also connect the rail and truck-loading hoppers with the stock piles. In the background is the gravel pit and plant of Henry J. Kaiser Company. Photo by Clyde Sunderland, Oakland.

Pacific Coast Aggregates Company operation near Livermore, Alameda County. Rock, sand, and gravel are scraped from surface deposits by heavy earth-moving equipment, each unit carrying 20 tons...In the background is the gravel pit and plant of Henry J. Kaiser Company.



FIG. 2. An old photograph of the Healy-Tibbets rock quarry crushing plant and loading dock near Winehaven, west of Richmond, Contra Costa County. Crushed rock once was shipped by barge in large open boxes as shown in the left middle ground. Quarry was in sandstone of the Franciscan formation. Site is now occupied by installations connected with the Standard Oil Company refinery at Richmond. Photo courtesy Pacific Gas and Electric Company.

An old photograph of the Healy-Tibbets rock quarry crushing plant and loading dock near Winehaven, West of Richmond, Contra Costa County. Crushed rock once was shipped by barge in large open boxes as shown in the left middle ground. Quarry was in sandstone of the Franciscan formation. Site is now occupied by installations connected with the Standard Oil company refinery at Richmond (ca. 1950).

California Quarries from 1914 to Present-Day (Contd.)

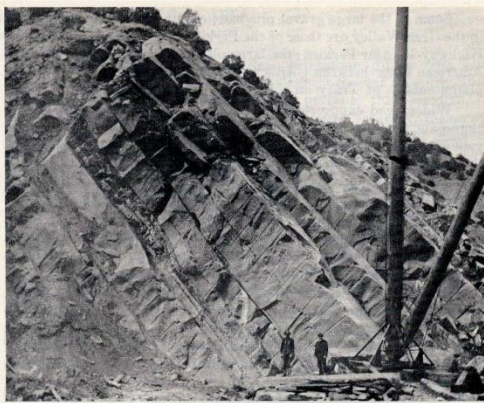


FIG. 3. Colusa sandstone quarry near Sites, Colusa County, from which building stone for such San Francisco structures as the Ferry Building, St. Francis Hotel, and Flood Building was taken. Sandstone beds of Upper Cretaceous age range from 18 inches to 35 feet in thickness. *Photo courtesy Pacific Gas and Electric Company.*

Colusa sandstone quarry near Sites, Colusa County, from which building stone for such San Francisco structures as the Ferry Building, St. Francis Hotel, and Flood Building was taken. Sandstone beds of Upper Cretaceous age range from 18 inches to 35 feet in thickness.

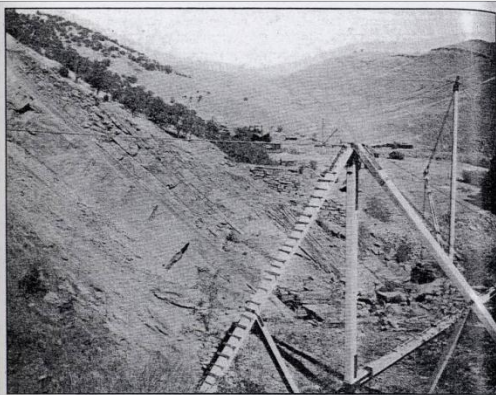


Photo No. 92. Sandstone beds in McGilvray quarry, Colusa County, California, looking north. Bed in center 15 feet thick. Colusa sandstone quarry in middle distance.

Sandstone beds in McGilvray quarry, Colusa County, California, looking north. Bed in center 15 feet thick. Colusa sandstone quarry in middle distance. (The McGilvray Stone Co. sandstone quarry was located across and down the road from the other Colusa Sandstone Co./Knowles quarry.)

California Quarries from 1914 to Present-Day (Contd.)



Raymond Granite – Upper Quarry – “Sierra White” Granite



Raymond Granite – Lower Quarry – “Sierra White” Granite

California Quarries from 1914 to Present-Day (Contd.)



**The Colusa Sandstone Co./Knowles/Brownstone
Quarry (active today) (2006)**



**The Colusa Sandstone
Co./Knowles/Brownstone Quarry
(2010) (inactive today)**

California Quarries from 1914 to Present-Day (Contd.)



F. W. Aggregates Quarries at a Distance



One of the White F. W. Aggregates Quarries

California Quarries from 1914 to Present-Day (Contd.)



Overview of Sierra Placerite (Rhyolite Tuff) Quarry, El Dorado County