

“Commemorating Perry in Massachusetts Granite”

(located at Put-in-Bay, Ohio)

By R. P. Hund, No. 1 Madison Avenue, New York City, &
G. H. Richie, 35 Federal Street, Boston, Massachusetts

Mine and Quarry Magazine

Sullivan Machinery Company, Chicago, Illinois

Vol. VIII, No. 2, April 1914, pp. 816-819

This article begins:

“With the beating of drums, the blare of trumpets, red fire, speech making, friendly competition on land and water, and other accessories which go to make an enthusiastic celebration, the one hundredth anniversary of Commodore Oliver Hazard Perry’s victory on Lake Erie was last summer fittingly observed in the cities and towns along the lake shore.

“While this form of celebration is forgotten almost as soon as finished, the magnificent Perry monument, now being erected at Put-in-Bay, facing the scene where the Battle of Lake Erie was fought, will last for ages as a commemoration of that victory and of the one hundred years of peace between Great Britain and the United States....”

This article, which begins on the next page,
is presented on the Stone Quarries and Beyond web site.

<http://quarriesandbeyond.org/>

Peggy B. Perazzo
Email: pbperazzo@comcast.net
February 2016

COMMEMORATING PERRY IN MASSACHUSETTS GRANITE

BY R. P. HUND¹ AND G. H. RICHIE²

With the beating of drums, the blare of trumpets, red fire, speech making, friendly competition on land and water, and other accessories which go to make an enthusiastic celebration, the one hundredth anniversary of Commodore Oliver Hazard Perry's victory on Lake Erie was last summer fittingly observed in the cities and towns along the lake shore.

While this form of celebration is forgotten almost as soon as finished, the magnificent Perry monument, now being erected at Put-in-Bay, facing the scene where the Battle of Lake Erie was fought, will last for ages as a commemoration of that victory and of the one hundred years of peace between Great Britain and the United States.

¹No. 1 Madison Ave., New York City. ²35 Federal St., Boston, Mass.



Quarry of the Massachusetts Pink Granite Company, at Milford, Mass.

(photo caption) "Quarry of the Massachusetts Pink Granite Company at Milford, Massachusetts."

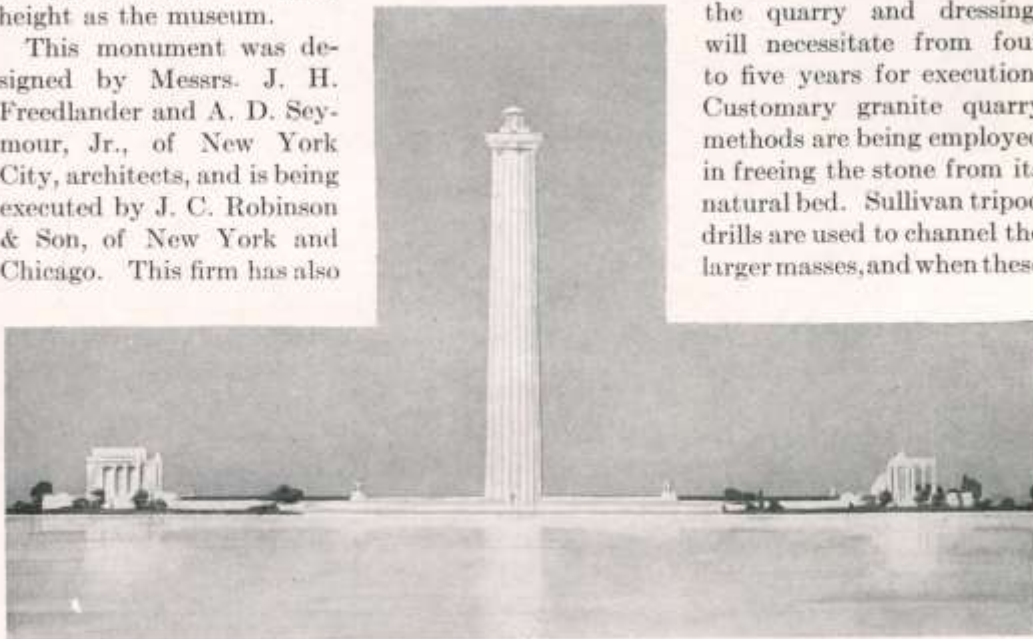
This magnificent monument will cover an area of approximately 750 x 460 feet. The Doric column in the center, shown by the accompanying illustration, is 335 feet in height from the base to the light on the tripod. The column is 45 feet in diameter at the base and 35 feet at the top. It is stated that this is the highest monument in the world, with the exception of the Washington monument at the National capitol, and the highest column, without exception. On the capital of the column an observation platform is provided which will be reached by an electric elevator from the base of the column. The column stands alone, so that it may be seen over the water from all points, and on one side, distant about 300 feet, is being erected the museum, in which books, paintings, engravings, fire-arms, and other relics, which pertain to the period of the Battle of Lake Erie and of the War of 1812, will be on exhibition. On the other side, and also 300 feet distant, will be erected a statue typifying "Peace by Arbitration," which will be enclosed on three sides by a colonnade, of approximately the same height as the museum.

This monument was designed by Messrs. J. H. Freedlander and A. D. Seymour, Jr., of New York City, architects, and is being executed by J. C. Robinson & Son, of New York and Chicago. This firm has also

to its credit the great cathedral at St. Louis and the classic Columbus Memorial at Washington, D. C.

The stone selected for the entire memorial is of the white granite, found at Milford, Massachusetts, exceedingly beautiful in texture and of a sufficiently delicate pink cast to temper the white and to counteract the natural tendency of pure white stone to take on a bluish appearance under the sky. Technically it is known as Milford Pink Granite, and was especially selected on account of the perfection of its geological composition, after exhaustive mechanical tests for hardness and durability. The latter quality is naturally an essential in the choice of material for a monument destined to last through the ages.

All of the stone for this work is being furnished by one concern at Milford, the Massachusetts Pink Granite Co. The accompanying illustrations were taken at the quarries of this company, particularly for MINE AND QUARRY. The amount of stone required for this large enterprise, the care necessary in its selection, its removal from the quarry and dressing, will necessitate from four to five years for execution. Customary granite quarry methods are being employed in freeing the stone from its natural bed. Sullivan tripod drills are used to channel the larger masses, and when these

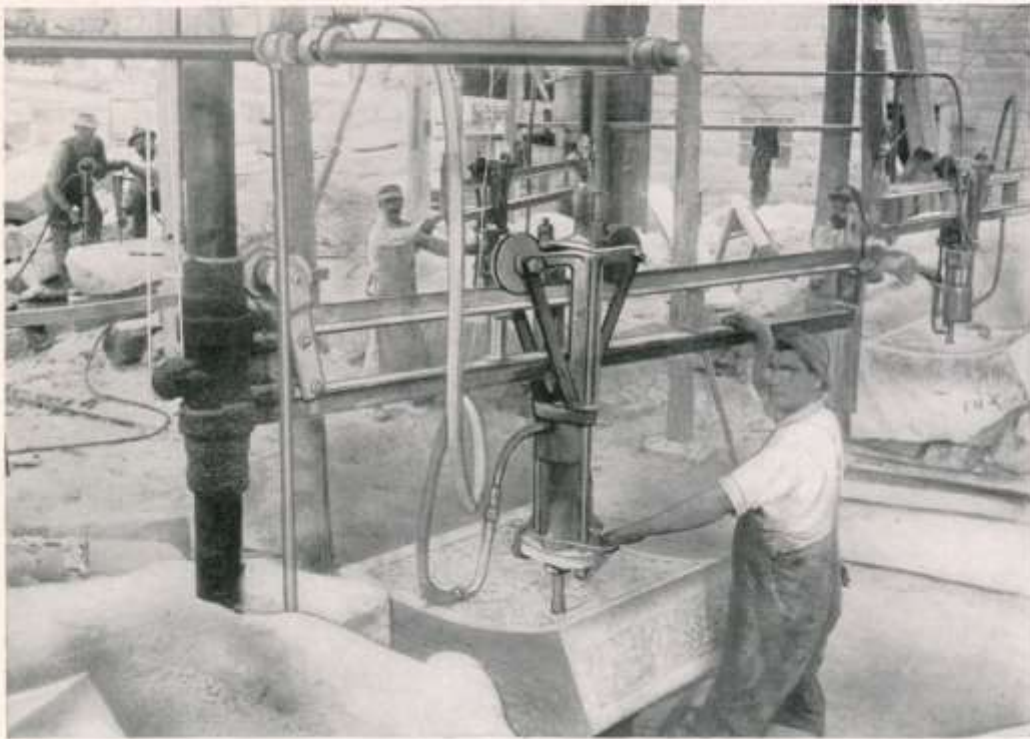


The Perry Memorial Monument, at Put-in-Bay, Ohio, as it will appear when completed

(photo caption) "The Perry Memorial Monument, at Put-in-Bay, Ohio, as it will appear when completed."



Splitting granite at Milford with Sullivan Plug Drills, for the Perry Memorial



Sullivan Surfacing Machines dressing granite, for the Perry Memorial

(photo captions) “Splitting granite at Milford with Sullivan Plug Drills, for the Perry Memorial” & “Sullivan Surfacing Machines dressing granite, for the Perry Memorial.”

are freed they are split up into the sizes desired by means of about thirty Sullivan class "DA-15" plug drills, and are then dressed and finished with an equipment of four surfacers, also of Sullivan manufacture.

The work done in splitting granite by means of the Sullivan plug drills and plugs-and-feathers is extremely rapid and accurate. The drills put in holes approximately $\frac{5}{8}$ -inch in diameter, to a depth of three inches, and on rush work, have drilled from 125 to 160 of these holes in an hour. A special cushioning device, incorporated in the valve motion of these tools, reduces the jar and vibration, and with it the fatigue to the operator, which would otherwise be a disadvantage in such a rapid working tool.

Among other monuments in which stone from the Massachusetts Pink Granite Company's quarries has been used

are the McKinley monument in Canton, Ohio, and the "Maine" monument in New York City, as well as many office and public buildings.



Modern methods used in hauling granite at Milford

(photo caption) "Modern methods used in hauling granite at Milford." (Massachusetts)